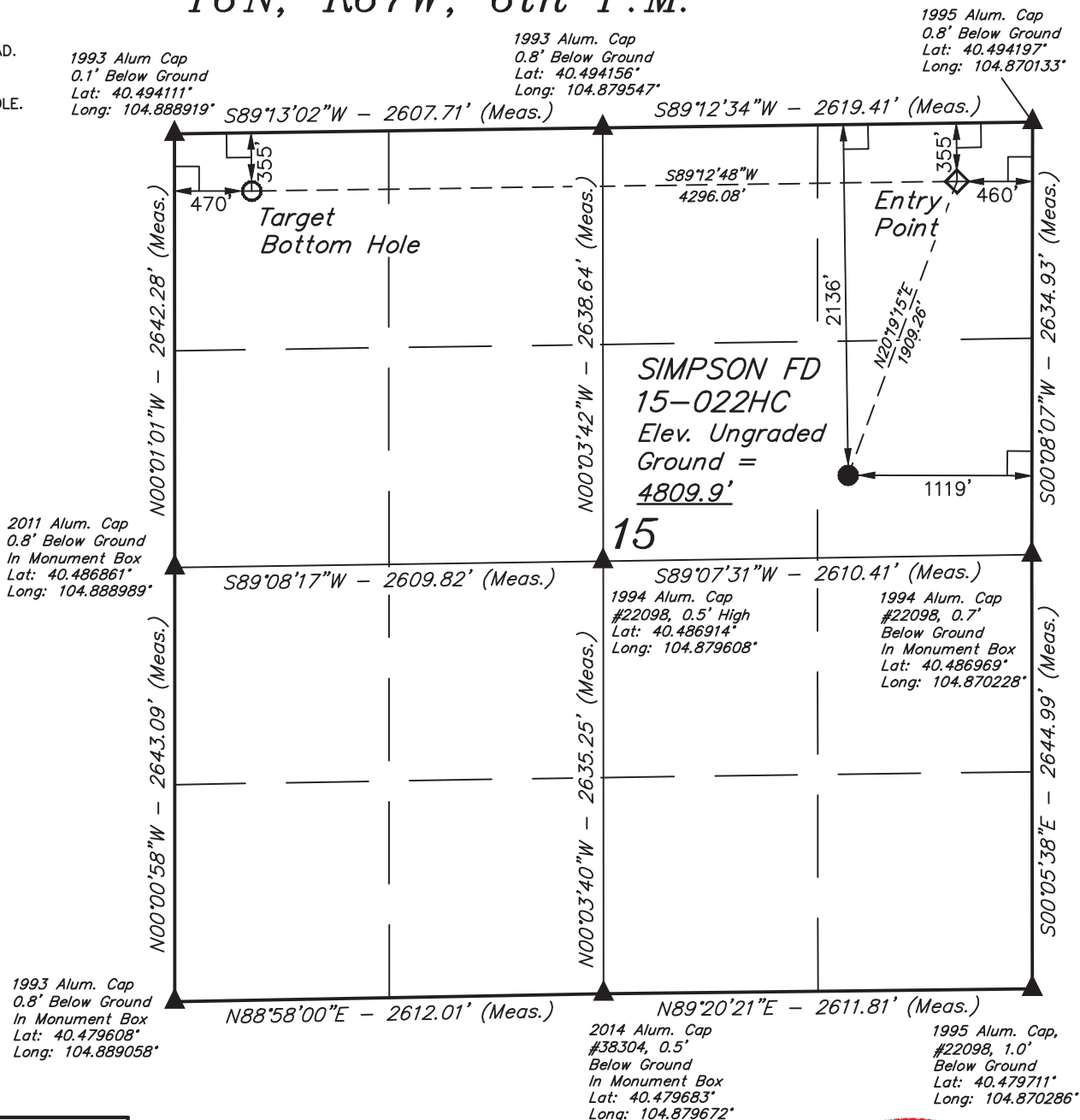


# LEGEND:

- └─┘ = 90° SYMBOL
- = PROPOSED WELLHEAD.
- ◆ = ENTRY POINT
- = TARGET BOTTOM HOLE.
- ▲ = SECTION CORNERS LOCATED.

T6N, R67W, 6th P.M.



PDOP = 1.4

<b>NAD 83 (TARGET BOTTOM HOLE)</b>
LATITUDE = 40°29'35.32" (40.493144)
LONGITUDE = 104°53'14.06" (104.887239)
<b>NAD 27 (TARGET BOTTOM HOLE)</b>
LATITUDE = 40°29'35.39" (40.493164)
LONGITUDE = 104°53'12.16" (104.886711)

<b>NAD 83 (ENTRY POINT)</b>	<b>NAD 83 (SURFACE LOCATION)</b>
LATITUDE = 40°29'35.58" (40.493217)	LATITUDE = 40°29'17.94" (40.488317)
LONGITUDE = 104°52'18.48" (104.871800)	LONGITUDE = 104°52'27.23" (104.874231)
<b>NAD 27 (ENTRY POINT)</b>	<b>NAD 27 (SURFACE LOCATION)</b>
LATITUDE = 40°29'35.65" (40.493236)	LATITUDE = 40°29'18.01" (40.488336)
LONGITUDE = 104°52'16.58" (104.871272)	LONGITUDE = 104°52'25.33" (104.873703)



CERTIFICATE  
THIS IS TO CERTIFY THAT THE ABOVE PLAT WAS PREPARED FROM FIELD NOTES OF ACTUAL SURVEYS MADE BY ME OR UNDER MY SUPERVISION AND THAT THE SAME ARE TRUE AND CORRECT TO THE BEST OF MY KNOWLEDGE AND BELIEF.



**BASIS OF BEARINGS**  
BASIS OF BEARINGS IS A G.P.S. OBSERVATION  
**BASIS OF ELEVATION**

USGS COOPERATIVE BASE NETWORK CONTROL STATION, DESIGNATION "VERMILYEA". NGS DATA SHEET LISTS THE NAVD 88 ELEVATION AS BEING 5026 FEET.



**GREAT WESTERN OIL & GAS COMPANY**

**SIMPSON FD 15-022HC**  
**SE 1/4 NE 1/4, SECTION 15, T6N, R67W, 6th P.M.**  
**WELD COUNTY, COLORADO**

SURVEYED BY: DALLAS NIELSEN, J.S.	DATE: 12-22-14
DRAWN BY: J.W.	DATE DRAWN: 12-29-14
SCALE: 1" = 1000'	REVISED: 00-00-00

**WELL LOCATION PLAT**



**UELS, LLC**  
Corporate Office \* 85 South 200 East  
Vernal, UT 84078 \* (435) 789-1017