

BONANZA CREEK ENERGY INC.

WELD COUNTY, COLORADO (NAD 83)

NE NE SEC. 6 T4N R62W 6th P.M.

STATE SEVENTY HOLES U41-Y44-6HNC

ORIGINAL WELLBORE

21 December, 2014

Plan: PROPOSAL #1





Project: WELD COUNTY, COLORADO (NAD 83)
Site: NE NE SEC. 6 T4N R62W 6th P.M.
Well: STATE SEVENTY HOLES U41-Y44-6HNC
Wellbore: ORIGINAL WELLBORE
Design: PROPOSAL #1

ANNOTATIONS									
TVD	MD	Inc	Azi	+N/-S	+E/-W	VSect	Dep	Annotation	
800.0	800.0	0.00	0.00	0.0	0.0	0.0	0.0	START NUDGE (2°/100ft BUR)	
1179.6	1180.7	7.61	53.23	15.1	20.2	-11.5	25.3	EOB TO 7.61° INC	
5418.1	5457.0	7.61	53.23	354.3	474.1	-268.7	591.8	END OF TANGENT	
5797.7	5837.6	0.00	0.00	369.4	494.3	-280.2	617.1	EOD TO VERTICAL	
5827.7	5867.6	0.00	0.00	369.4	494.3	-280.2	617.1	KOP (12°/100ft BUR)	
6288.9	6492.6	75.00	176.70	16.1	514.7	71.4	971.0	START OF TANGENT	
6314.8	6592.6	75.00	176.70	-80.3	520.2	167.4	1067.6	END OF TANGENT	
6331.0	6717.6	90.00	176.70	-203.7	527.3	290.2	1191.1	7" ICP *NEW* - STATE SEVENTY HOLES U41-Y44-6HNC	
6331.0	11023.9	90.00	176.71	-4502.8	775.0	4569.0	5497.4	BHL - STATE SEVENTY HOLES U41-Y44-6HNC	

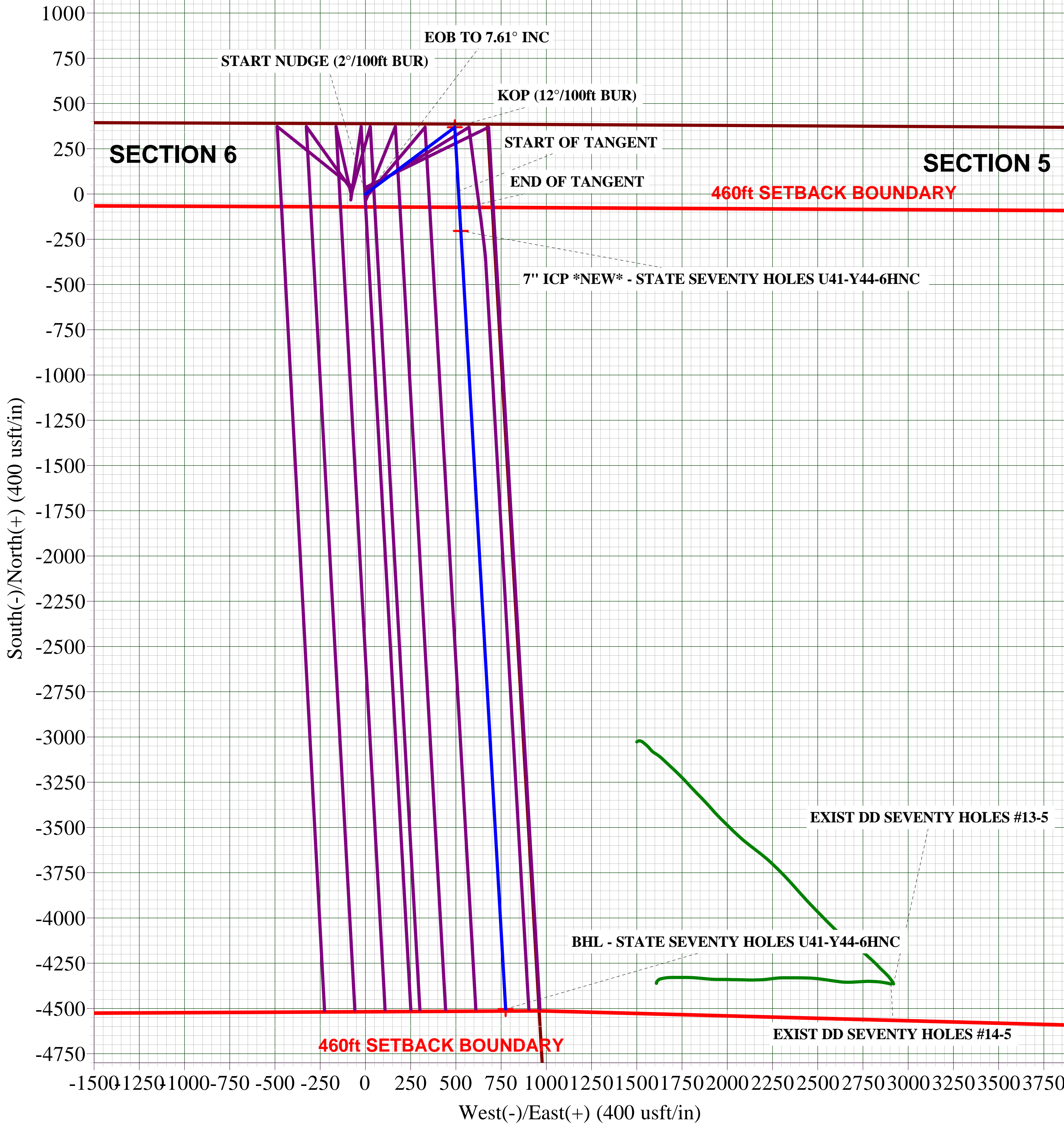
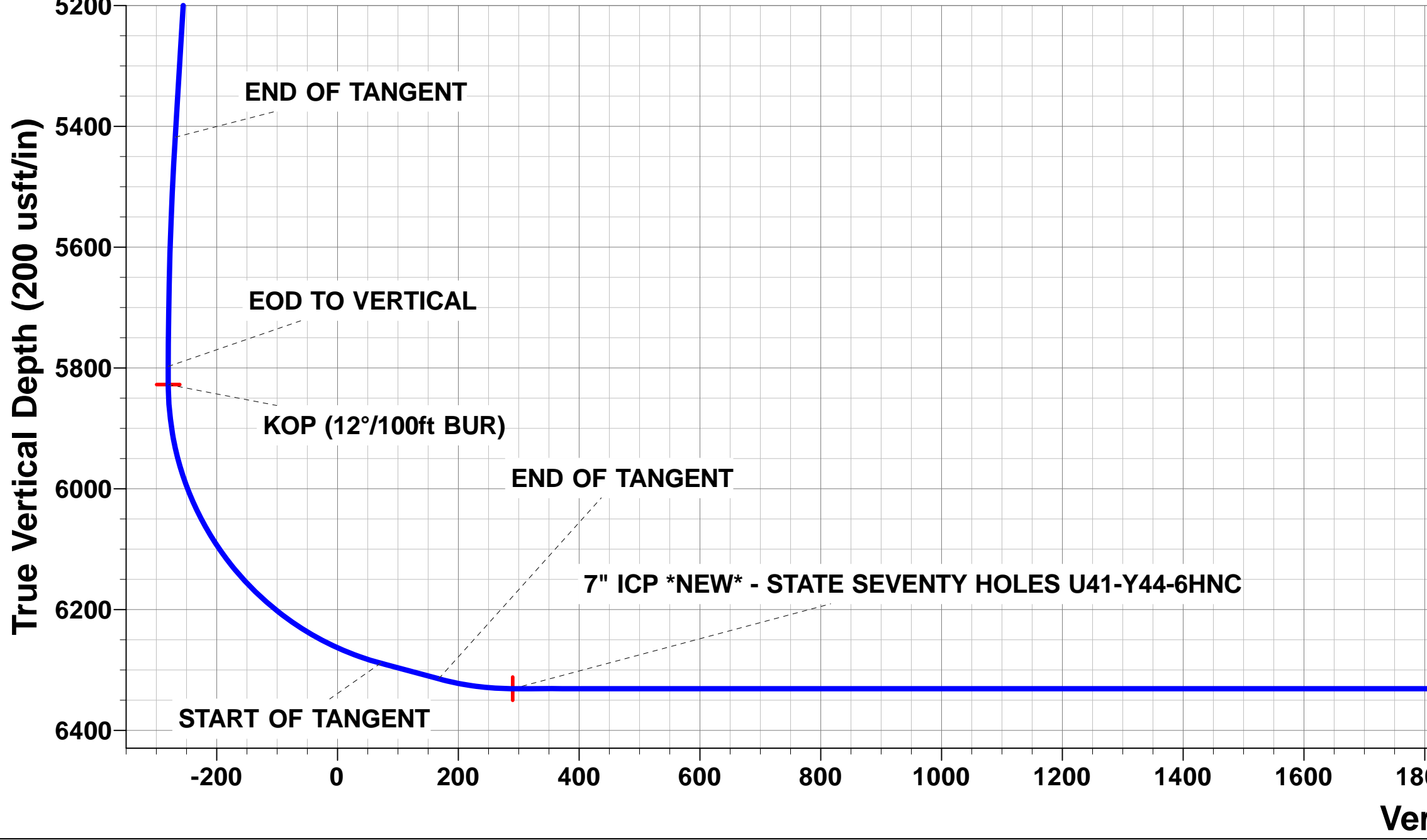
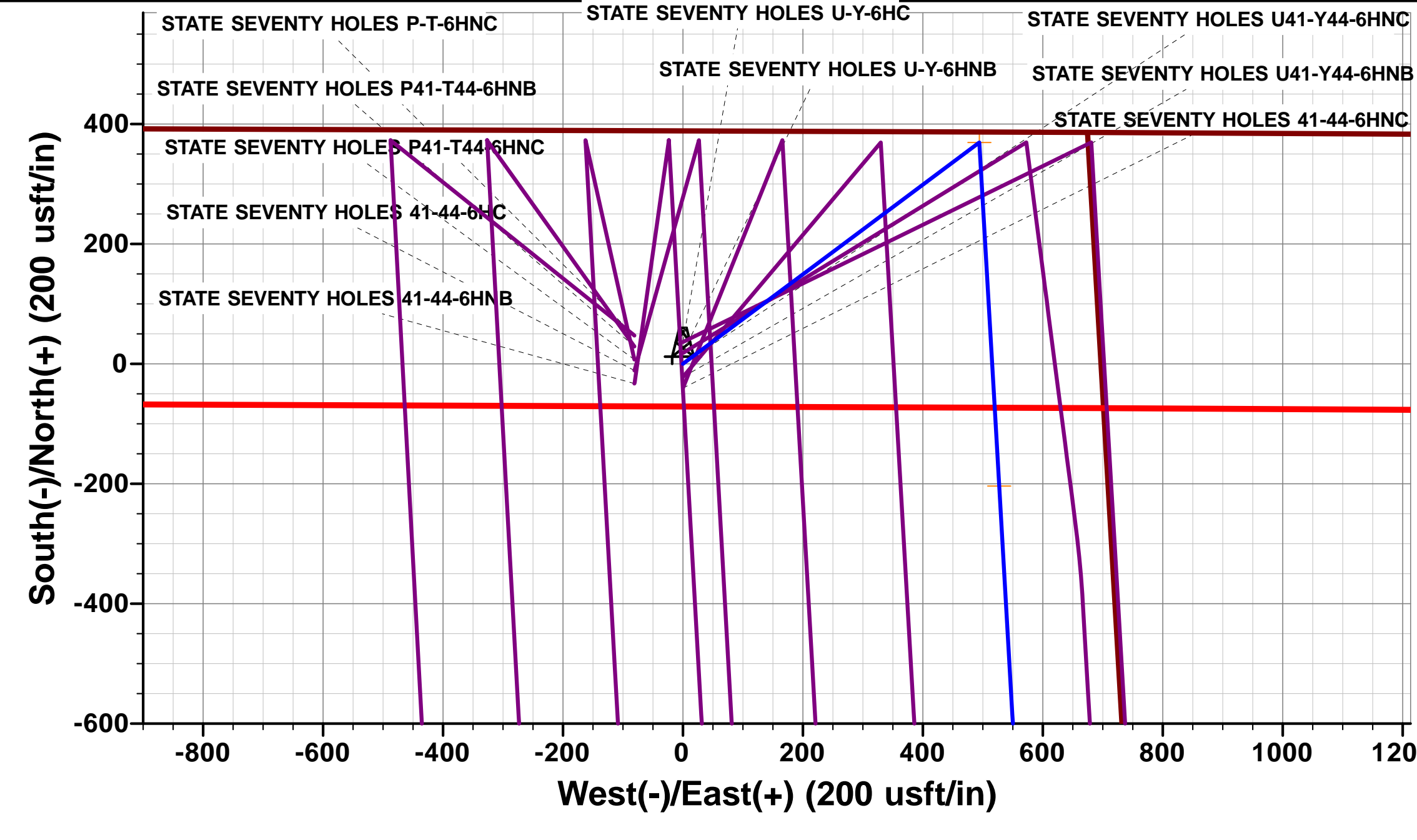
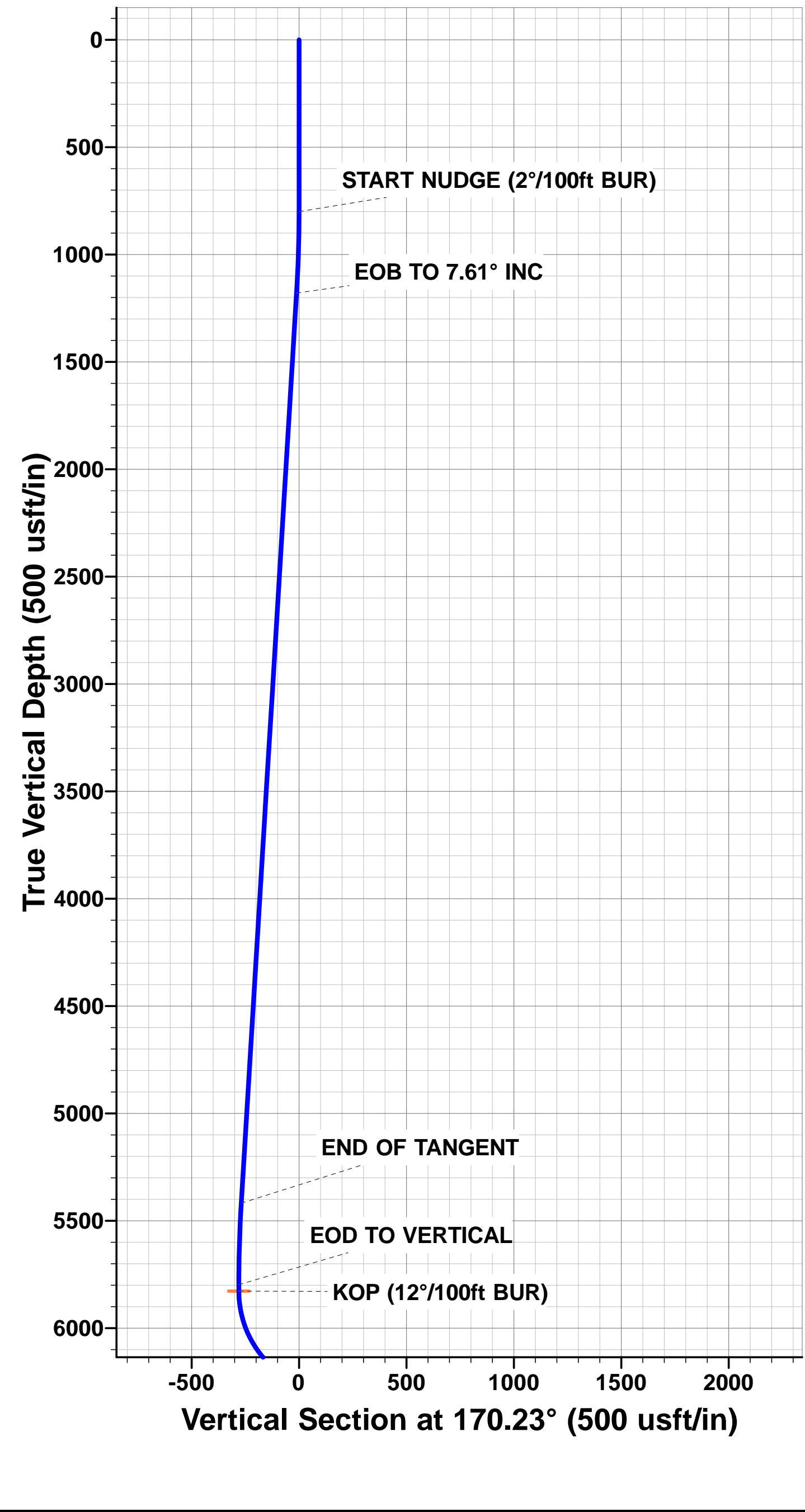
PROPOSED LOCAL COORDINATES:

SHL: 390ft FNL & 698ft FEL Sec 6

7" ICP *NEW*: 589ft FNL & 182ft FEL Sec 6

BHL: 470ft FSL & 186ft FEL Sec 6

WELLBORE TARGET DETAILS (LAT/LONG)					
Name	TVD	+N/-S	+E/-W	Latitude	Longitude
KOP - STATE SEVENTY HOLES U41-Y44-6HNC	5827.7	369.4	494.3	40.348994	-104.360607
7" ICP *NEW* - STATE SEVENTY HOLES U41-Y44-6HNC	6331.0	-203.7	527.3	40.347421	-104.360488
BHL - STATE SEVENTY HOLES U41-Y44-6HNC	6331.0	-4502.8	775.0	40.335620	-104.359600



Planning Report



Database:	EDM 5000.1 Single User Db	Local Co-ordinate Reference:	Well STATE SEVENTY HOLES U41-Y44-6HNC
Company:	BONANZA CREEK ENERGY INC.	TVD Reference:	KB-EST @ 4561.0usft (Original Well Elev)
Project:	WELD COUNTY, COLORADO (NAD 83)	MD Reference:	KB-EST @ 4561.0usft (Original Well Elev)
Site:	NE NE SEC. 6 T4N R62W 6th P.M.	North Reference:	True
Well:	STATE SEVENTY HOLES U41-Y44-6HNC	Survey Calculation Method:	Minimum Curvature
Wellbore:	ORIGINAL WELLBORE		
Design:	PROPOSAL #1		

Project	WELD COUNTY, COLORADO (NAD 83)		
Map System:	US State Plane 1983	System Datum:	Mean Sea Level
Geo Datum:	North American Datum 1983		
Map Zone:	Colorado Northern Zone		Using geodetic scale factor

Site	NE NE SEC. 6 T4N R62W 6th P.M.		
Site Position:		Northing:	1,371,680.11 usft
From:	Lat/Long	Easting:	3,317,072.91 usft
Position Uncertainty:	0.0 usft	Slot Radius:	1.10000ft
		Latitude:	40.348080
		Longitude:	-104.362380
		Grid Convergence:	0.74 °

Well	STATE SEVENTY HOLES U41-Y44-6HNC		
Well Position	+N/-S	-36.4 usft	Northing:
	+E/-W	0.0 usft	Easting:
Position Uncertainty		0.0 usft	Wellhead Elevation:
			Latitude:
			Longitude:
			Ground Level:

Wellbore	ORIGINAL WELLBORE				
Magnetics	Model Name	Sample Date	Declination (°)	Dip Angle (°)	Field Strength (nT)
	IGRF2010	21/12/2014	8.17	66.95	52,777

Design	PROPOSAL #1				
Audit Notes:					
Version:	Phase:	PROTOTYPE	Tie On Depth:	0.0	
Vertical Section:	Depth From (TVD) (usft)	+N/-S (usft)	+E/-W (usft)	Direction (°)	
	6,331.0	0.0	0.0	170.23	

Plan Sections											
MD (usft)	Inc (°)	Azi (°)	Vertical Depth	SS (usft)	+N/-S (usft)	+E/-W (usft)	Dogleg Rate (°/100usf)	Build Rate (°/100usf)	Turn Rate (°/100usf)	TFO (°)	Target
0.0	0.00	0.00	0.0	-4,561.0	0.0	0.0	0.00	0.00	0.00	0.00	
800.0	0.00	0.00	800.0	-3,761.0	0.0	0.0	0.00	0.00	0.00	0.00	
1,180.7	7.61	53.23	1,179.6	-3,381.4	15.1	20.2	2.00	2.00	0.00	53.23	
5,457.0	7.61	53.23	5,418.1	857.1	354.3	474.1	0.00	0.00	0.00	0.00	
5,837.6	0.00	0.00	5,797.7	1,236.7	369.4	494.3	2.00	-2.00	0.00	180.00	
5,867.6	0.00	0.00	5,827.7	1,266.7	369.4	494.3	0.00	0.00	0.00	0.00	KOP - STATE SEVI
6,492.6	75.00	176.70	6,288.9	1,727.9	16.1	514.7	12.00	12.00	0.00	176.70	
6,592.6	75.00	176.70	6,314.8	1,753.8	-80.3	520.2	0.00	0.00	0.00	0.00	
6,717.6	90.00	176.70	6,331.0	1,770.0	-203.7	527.3	12.00	12.00	0.00	0.00	
11,023.9	90.00	176.71	6,331.0	1,770.0	-4,502.8	775.0	0.00	0.00	0.00	77.09	BHL - STATE SEVE

Planning Report



Database:	EDM 5000.1 Single User Db	Local Co-ordinate Reference:	Well STATE SEVENTY HOLES U41-Y44-6HNC
Company:	BONANZA CREEK ENERGY INC.	TVD Reference:	KB-EST @ 4561.0usft (Original Well Elev)
Project:	WELD COUNTY, COLORADO (NAD 83)	MD Reference:	KB-EST @ 4561.0usft (Original Well Elev)
Site:	NE NE SEC. 6 T4N R62W 6th P.M.	North Reference:	True
Well:	STATE SEVENTY HOLES U41-Y44-6HNC	Survey Calculation Method:	Minimum Curvature
Wellbore:	ORIGINAL WELLBORE		
Design:	PROPOSAL #1		

Planned Survey

MD (usft)	Inc (°)	Azi (°)	TVD (usft)	SS (usft)	+N/-S (usft)	+E/-W (usft)	Vertical Section (usft)	Dogleg Rate (°/100usft)	Build Rate (°/100usft)	Turn Rate (°/100usft)
0.0	0.00	0.00	0.0	4,561.00	0.0	0.0	0.0	0.00	0.00	0.00
100.0	0.00	0.00	100.0	4,461.00	0.0	0.0	0.0	0.00	0.00	0.00
200.0	0.00	0.00	200.0	4,361.00	0.0	0.0	0.0	0.00	0.00	0.00
300.0	0.00	0.00	300.0	4,261.00	0.0	0.0	0.0	0.00	0.00	0.00
400.0	0.00	0.00	400.0	4,161.00	0.0	0.0	0.0	0.00	0.00	0.00
500.0	0.00	0.00	500.0	4,061.00	0.0	0.0	0.0	0.00	0.00	0.00
600.0	0.00	0.00	600.0	3,961.00	0.0	0.0	0.0	0.00	0.00	0.00
700.0	0.00	0.00	700.0	3,861.00	0.0	0.0	0.0	0.00	0.00	0.00
START NUDGE (2°/100ft BUR)										
800.0	0.00	0.00	800.0	3,761.00	0.0	0.0	0.0	0.00	0.00	0.00
900.0	2.00	53.23	900.0	3,661.02	1.0	1.4	-0.8	2.00	2.00	0.00
1,000.0	4.00	53.23	999.8	3,561.16	4.2	5.6	-3.2	2.00	2.00	0.00
1,100.0	6.00	53.23	1,099.5	3,461.55	9.4	12.6	-7.1	2.00	2.00	0.00
EOB TO 7.61° INC										
1,180.7	7.61	53.23	1,179.6	3,381.44	15.1	20.2	-11.5	2.00	2.00	0.00
1,200.0	7.61	53.23	1,198.7	3,362.29	16.7	22.3	-12.6	0.00	0.00	0.00
1,300.0	7.61	53.23	1,297.8	3,263.17	24.6	32.9	-18.6	0.00	0.00	0.00
1,400.0	7.61	53.23	1,396.9	3,164.05	32.5	43.5	-24.7	0.00	0.00	0.00
1,500.0	7.61	53.23	1,496.1	3,064.93	40.4	54.1	-30.7	0.00	0.00	0.00
1,600.0	7.61	53.23	1,595.2	2,965.82	48.4	64.7	-36.7	0.00	0.00	0.00
1,700.0	7.61	53.23	1,694.3	2,866.70	56.3	75.3	-42.7	0.00	0.00	0.00
1,800.0	7.61	53.23	1,793.4	2,767.58	64.2	86.0	-48.7	0.00	0.00	0.00
1,900.0	7.61	53.23	1,892.5	2,668.46	72.2	96.6	-54.7	0.00	0.00	0.00
2,000.0	7.61	53.23	1,991.7	2,569.34	80.1	107.2	-60.8	0.00	0.00	0.00
2,100.0	7.61	53.23	2,090.8	2,470.22	88.0	117.8	-66.8	0.00	0.00	0.00
2,200.0	7.61	53.23	2,189.9	2,371.11	96.0	128.4	-72.8	0.00	0.00	0.00
2,300.0	7.61	53.23	2,289.0	2,271.99	103.9	139.0	-78.8	0.00	0.00	0.00
2,400.0	7.61	53.23	2,388.1	2,172.87	111.8	149.6	-84.8	0.00	0.00	0.00
2,500.0	7.61	53.23	2,487.2	2,073.75	119.8	160.2	-90.8	0.00	0.00	0.00
2,600.0	7.61	53.23	2,586.4	1,974.63	127.7	170.9	-96.9	0.00	0.00	0.00
2,700.0	7.61	53.23	2,685.5	1,875.51	135.6	181.5	-102.9	0.00	0.00	0.00
2,800.0	7.61	53.23	2,784.6	1,776.39	143.6	192.1	-108.9	0.00	0.00	0.00
2,900.0	7.61	53.23	2,883.7	1,677.28	151.5	202.7	-114.9	0.00	0.00	0.00
3,000.0	7.61	53.23	2,982.8	1,578.16	159.4	213.3	-120.9	0.00	0.00	0.00
3,100.0	7.61	53.23	3,082.0	1,479.04	167.3	223.9	-126.9	0.00	0.00	0.00
3,200.0	7.61	53.23	3,181.1	1,379.92	175.3	234.5	-133.0	0.00	0.00	0.00
3,300.0	7.61	53.23	3,280.2	1,280.80	183.2	245.2	-139.0	0.00	0.00	0.00
3,400.0	7.61	53.23	3,379.3	1,181.68	191.1	255.8	-145.0	0.00	0.00	0.00
3,500.0	7.61	53.23	3,478.4	1,082.57	199.1	266.4	-151.0	0.00	0.00	0.00
3,600.0	7.61	53.23	3,577.6	983.45	207.0	277.0	-157.0	0.00	0.00	0.00
3,700.0	7.61	53.23	3,676.7	884.33	214.9	287.6	-163.0	0.00	0.00	0.00
3,800.0	7.61	53.23	3,775.8	785.21	222.9	298.2	-169.0	0.00	0.00	0.00
3,900.0	7.61	53.23	3,874.9	686.09	230.8	308.8	-175.1	0.00	0.00	0.00
4,000.0	7.61	53.23	3,974.0	586.97	238.7	319.4	-181.1	0.00	0.00	0.00
4,100.0	7.61	53.23	4,073.1	487.86	246.7	330.1	-187.1	0.00	0.00	0.00
4,200.0	7.61	53.23	4,172.3	388.74	254.6	340.7	-193.1	0.00	0.00	0.00
4,300.0	7.61	53.23	4,271.4	289.62	262.5	351.3	-199.1	0.00	0.00	0.00
4,400.0	7.61	53.23	4,370.5	190.50	270.5	361.9	-205.1	0.00	0.00	0.00
4,500.0	7.61	53.23	4,469.6	91.38	278.4	372.5	-211.2	0.00	0.00	0.00
4,600.0	7.61	53.23	4,568.7	-7.74	286.3	383.1	-217.2	0.00	0.00	0.00
4,700.0	7.61	53.23	4,667.9	-106.85	294.2	393.7	-223.2	0.00	0.00	0.00
4,800.0	7.61	53.23	4,767.0	-205.97	302.2	404.3	-229.2	0.00	0.00	0.00
4,900.0	7.61	53.23	4,866.1	-305.09	310.1	415.0	-235.2	0.00	0.00	0.00

Planning Report



Database:	EDM 5000.1 Single User Db	Local Co-ordinate Reference:	Well STATE SEVENTY HOLES U41-Y44-6HNC
Company:	BONANZA CREEK ENERGY INC.	TVD Reference:	KB-EST @ 4561.0usft (Original Well Elev)
Project:	WELD COUNTY, COLORADO (NAD 83)	MD Reference:	KB-EST @ 4561.0usft (Original Well Elev)
Site:	NE NE SEC. 6 T4N R62W 6th P.M.	North Reference:	True
Well:	STATE SEVENTY HOLES U41-Y44-6HNC	Survey Calculation Method:	Minimum Curvature
Wellbore:	ORIGINAL WELLBORE		
Design:	PROPOSAL #1		

Planned Survey

MD (usft)	Inc (°)	Azi (°)	TVD (usft)	SS (usft)	+N/-S (usft)	+E/-W (usft)	Vertical Section (usft)	Dogleg Rate (°/100usft)	Build Rate (°/100usft)	Turn Rate (°/100usft)
5,000.0	7.61	53.23	4,965.2	-404.21	318.0	425.6	-241.2	0.00	0.00	0.00
5,100.0	7.61	53.23	5,064.3	-503.33	326.0	436.2	-247.3	0.00	0.00	0.00
5,200.0	7.61	53.23	5,163.4	-602.45	333.9	446.8	-253.3	0.00	0.00	0.00
5,300.0	7.61	53.23	5,262.6	-701.57	341.8	457.4	-259.3	0.00	0.00	0.00
5,400.0	7.61	53.23	5,361.7	-800.68	349.8	468.0	-265.3	0.00	0.00	0.00
END OF TANGENT										
5,457.0	7.61	53.23	5,418.1	-857.14	354.3	474.1	-268.7	0.00	0.00	0.00
5,500.0	6.75	53.23	5,460.8	-899.84	357.5	478.4	-271.2	2.00	-2.00	0.00
5,600.0	4.75	53.23	5,560.3	-999.33	363.5	486.4	-275.7	2.00	-2.00	0.00
5,700.0	2.75	53.23	5,660.1	-1,099.12	367.4	491.7	-278.7	2.00	-2.00	0.00
5,800.0	0.75	53.23	5,760.1	-1,199.06	369.3	494.1	-280.1	2.00	-2.00	0.00
EOD TO VERTICAL										
5,837.6	0.00	0.00	5,797.7	-1,236.70	369.4	494.3	-280.2	2.00	-2.00	0.00
KOP (12°/100ft BUR)										
5,867.6	0.00	0.00	5,827.7	-1,266.70	369.4	494.3	-280.2	0.00	0.00	0.00
5,900.0	3.88	176.70	5,860.0	-1,299.04	368.3	494.4	-279.1	12.00	12.00	0.00
6,000.0	15.88	176.70	5,958.4	-1,397.37	351.2	495.3	-262.1	12.00	12.00	0.00
6,100.0	27.88	176.70	6,051.0	-1,490.00	314.1	497.5	-225.1	12.00	12.00	0.00
6,200.0	39.88	176.70	6,133.9	-1,572.86	258.5	500.7	-169.8	12.00	12.00	0.00
6,300.0	51.88	176.70	6,203.3	-1,642.35	187.0	504.8	-98.6	12.00	12.00	0.00
6,400.0	63.88	176.70	6,256.4	-1,695.42	102.6	509.7	-14.6	12.00	12.00	0.00
START OF TANGENT										
6,492.6	75.00	176.70	6,288.9	-1,727.90	16.1	514.7	71.4	12.00	12.00	0.00
6,500.0	75.00	176.70	6,290.8	-1,729.80	9.0	515.1	78.5	0.00	0.00	0.00
END OF TANGENT										
6,592.6	75.00	176.70	6,314.8	-1,753.78	-80.3	520.2	167.4	0.00	0.00	0.00
6,600.0	75.88	176.70	6,316.6	-1,755.63	-87.4	520.6	174.5	12.00	12.00	0.00
6,700.0	87.88	176.70	6,330.7	-1,769.72	-186.1	526.3	272.7	12.00	12.00	0.00
7" ICP *NEW* - STATE SEVENTY HOLES U41-Y44-6HNC										
6,717.6	90.00	176.70	6,331.0	-1,770.05	-203.7	527.3	290.2	12.00	12.00	0.00
6,800.0	90.00	176.70	6,331.0	-1,770.05	-285.9	532.1	372.0	0.00	0.00	0.00
6,900.0	90.00	176.70	6,331.0	-1,770.05	-385.8	537.8	471.4	0.00	0.00	0.00
7,000.0	90.00	176.70	6,331.0	-1,770.05	-485.6	543.6	570.8	0.00	0.00	0.00
7,100.0	90.00	176.70	6,331.0	-1,770.05	-585.4	549.4	670.1	0.00	0.00	0.00
7,200.0	90.00	176.70	6,331.0	-1,770.05	-685.3	555.1	769.5	0.00	0.00	0.00
7,300.0	90.00	176.70	6,331.0	-1,770.05	-785.1	560.9	868.9	0.00	0.00	0.00
7,400.0	90.00	176.70	6,331.0	-1,770.05	-884.9	566.6	968.2	0.00	0.00	0.00
7,500.0	90.00	176.70	6,331.0	-1,770.05	-984.8	572.4	1,067.6	0.00	0.00	0.00
7,600.0	90.00	176.70	6,331.0	-1,770.04	-1,084.6	578.1	1,167.0	0.00	0.00	0.00
7,700.0	90.00	176.70	6,331.0	-1,770.04	-1,184.4	583.9	1,266.3	0.00	0.00	0.00
7,800.0	90.00	176.70	6,331.0	-1,770.04	-1,284.3	589.6	1,365.7	0.00	0.00	0.00
7,900.0	90.00	176.70	6,331.0	-1,770.04	-1,384.1	595.4	1,465.0	0.00	0.00	0.00
8,000.0	90.00	176.70	6,331.0	-1,770.04	-1,483.9	601.1	1,564.4	0.00	0.00	0.00
8,100.0	90.00	176.70	6,331.0	-1,770.04	-1,583.8	606.9	1,663.8	0.00	0.00	0.00
8,200.0	90.00	176.70	6,331.0	-1,770.04	-1,683.6	612.7	1,763.1	0.00	0.00	0.00
8,300.0	90.00	176.70	6,331.0	-1,770.04	-1,783.4	618.4	1,862.5	0.00	0.00	0.00
8,400.0	90.00	176.70	6,331.0	-1,770.04	-1,883.3	624.2	1,961.9	0.00	0.00	0.00
8,500.0	90.00	176.70	6,331.0	-1,770.04	-1,983.1	629.9	2,061.2	0.00	0.00	0.00
8,600.0	90.00	176.70	6,331.0	-1,770.04	-2,082.9	635.7	2,160.6	0.00	0.00	0.00
8,700.0	90.00	176.70	6,331.0	-1,770.04	-2,182.8	641.4	2,260.0	0.00	0.00	0.00
8,800.0	90.00	176.70	6,331.0	-1,770.04	-2,282.6	647.2	2,359.3	0.00	0.00	0.00
8,900.0	90.00	176.70	6,331.0	-1,770.03	-2,382.5	652.9	2,458.7	0.00	0.00	0.00

Planning Report



Database:	EDM 5000.1 Single User Db	Local Co-ordinate Reference:	Well STATE SEVENTY HOLES U41-Y44-6HNC
Company:	BONANZA CREEK ENERGY INC.	TVD Reference:	KB-EST @ 4561.0usft (Original Well Elev)
Project:	WELD COUNTY, COLORADO (NAD 83)	MD Reference:	KB-EST @ 4561.0usft (Original Well Elev)
Site:	NE NE SEC. 6 T4N R62W 6th P.M.	North Reference:	True
Well:	STATE SEVENTY HOLES U41-Y44-6HNC	Survey Calculation Method:	Minimum Curvature
Wellbore:	ORIGINAL WELLBORE		
Design:	PROPOSAL #1		

Planned Survey

MD (usft)	Inc (°)	Azi (°)	TVD (usft)	SS (usft)	+N/-S (usft)	+E/-W (usft)	Vertical Section (usft)	Dogleg Rate (°/100usft)	Build Rate (°/100usft)	Turn Rate (°/100usft)
9,000.0	90.00	176.70	6,331.0	-1,770.03	-2,482.3	658.7	2,558.0	0.00	0.00	0.00
9,100.0	90.00	176.70	6,331.0	-1,770.03	-2,582.1	664.4	2,657.4	0.00	0.00	0.00
9,200.0	90.00	176.70	6,331.0	-1,770.03	-2,682.0	670.2	2,756.8	0.00	0.00	0.00
9,300.0	90.00	176.70	6,331.0	-1,770.03	-2,781.8	675.9	2,856.1	0.00	0.00	0.00
9,400.0	90.00	176.70	6,331.0	-1,770.03	-2,881.6	681.7	2,955.5	0.00	0.00	0.00
9,500.0	90.00	176.70	6,331.0	-1,770.03	-2,981.5	687.4	3,054.9	0.00	0.00	0.00
9,600.0	90.00	176.70	6,331.0	-1,770.03	-3,081.3	693.2	3,154.2	0.00	0.00	0.00
9,700.0	90.00	176.70	6,331.0	-1,770.02	-3,181.1	698.9	3,253.6	0.00	0.00	0.00
9,800.0	90.00	176.70	6,331.0	-1,770.02	-3,281.0	704.7	3,352.9	0.00	0.00	0.00
9,900.0	90.00	176.70	6,331.0	-1,770.02	-3,380.8	710.4	3,452.3	0.00	0.00	0.00
10,000.0	90.00	176.70	6,331.0	-1,770.02	-3,480.6	716.2	3,551.7	0.00	0.00	0.00
10,100.0	90.00	176.70	6,331.0	-1,770.02	-3,580.5	721.9	3,651.0	0.00	0.00	0.00
10,200.0	90.00	176.70	6,331.0	-1,770.02	-3,680.3	727.7	3,750.4	0.00	0.00	0.00
10,300.0	90.00	176.70	6,331.0	-1,770.01	-3,780.1	733.4	3,849.8	0.00	0.00	0.00
10,400.0	90.00	176.70	6,331.0	-1,770.01	-3,880.0	739.2	3,949.1	0.00	0.00	0.00
10,500.0	90.00	176.70	6,331.0	-1,770.01	-3,979.8	744.9	4,048.5	0.00	0.00	0.00
10,600.0	90.00	176.70	6,331.0	-1,770.01	-4,079.6	750.7	4,147.9	0.00	0.00	0.00
10,700.0	90.00	176.71	6,331.0	-1,770.01	-4,179.5	756.4	4,247.2	0.00	0.00	0.00
10,800.0	90.00	176.71	6,331.0	-1,770.00	-4,279.3	762.2	4,346.6	0.00	0.00	0.00
10,900.0	90.00	176.71	6,331.0	-1,770.00	-4,379.1	767.9	4,445.9	0.00	0.00	0.00
11,000.0	90.00	176.71	6,331.0	-1,770.00	-4,479.0	773.7	4,545.3	0.00	0.00	0.00
BHL - STATE SEVENTY HOLES U41-Y44-6HNC										
11,023.9	90.00	176.71	6,331.0	-1,770.00	-4,502.8	775.0	4,569.0	0.00	0.00	0.00

Plan Annotations

MD (usft)	TVD (usft)	Local Coordinates		Comment
		+N/-S (usft)	+E/-W (usft)	
800.0	800.0	0.0	0.0	START NUDGE (2°/100ft BUR)
1,180.7	1,179.6	15.1	20.2	EOB TO 7.61° INC
5,457.0	5,418.1	354.3	474.1	END OF TANGENT
5,837.6	5,797.7	369.4	494.3	EOD TO VERTICAL
5,867.6	5,827.7	369.4	494.3	KOP (12°/100ft BUR)
6,492.6	6,288.9	16.1	514.7	START OF TANGENT
6,592.6	6,314.8	-80.3	520.2	END OF TANGENT
6,717.6	6,331.0	-203.7	527.3	7" ICP *NEW* - STATE SEVENTY HOLES U41-Y44-6HNC
11,023.9	6,331.0	-4,502.8	775.0	BHL - STATE SEVENTY HOLES U41-Y44-6HNC