

BONANZA CREEK ENERGY INC.

WELD COUNTY, COLORADO (NAD 83)

NE NE SEC. 6 T4N R62W 6th P.M.

STATE SEVENTY HOLES 41-44-6HC

ORIGINAL WELLBORE

21 December, 2014

Plan: PROPOSAL #1





Project: WELD COUNTY, COLORADO (NAD 83)
Site: NE NE SEC. 6 T4N R62W 6th P.M.
Well: STATE SEVENTY HOLES 41-44-6HC
Wellbore: ORIGINAL WELLBORE
Design: PROPOSAL #1

ANNOTATIONS									
TVD	MD	Inc	Azi	+N/-S	+E/-W	Vsect	Dep	Annotation	
1100.0	1100.0	0.00	0.00	0.0	0.0	0.0	0.0	START NUDGE (2°/100ft BUR)	
1350.0	1350.3	5.01	15.65	10.5	2.9	-10.2	10.9	EOB TO 5.01° INC	
5654.7	5671.5	5.01	15.65	373.6	104.7	-363.4	388.0	END OF TANGENT	
5904.7	5921.8	0.00	0.00	384.1	107.6	-373.6	398.9	EOD TO VERTICAL	
5934.7	5951.8	0.00	0.00	384.1	107.6	-373.6	398.9	KOP (12°/100ft BUR)	
6395.9	6576.8	75.00	176.78	30.8	127.5	-19.9	752.8	START OF TANGENT	
6421.8	6676.8	75.00	176.78	-65.7	132.9	76.7	849.4	END OF TANGENT	
6438.0	6801.8	90.00	176.78	-189.1	139.8	200.2	972.9	7" ICP *NEW* - STATE SEVENTY HOLES 41-44-6HC	
6438.0	11115.1	90.00	176.78	-4495.5	381.9	4511.7	5286.2	BHL - STATE SEVENTY HOLES 41-44-6HC	

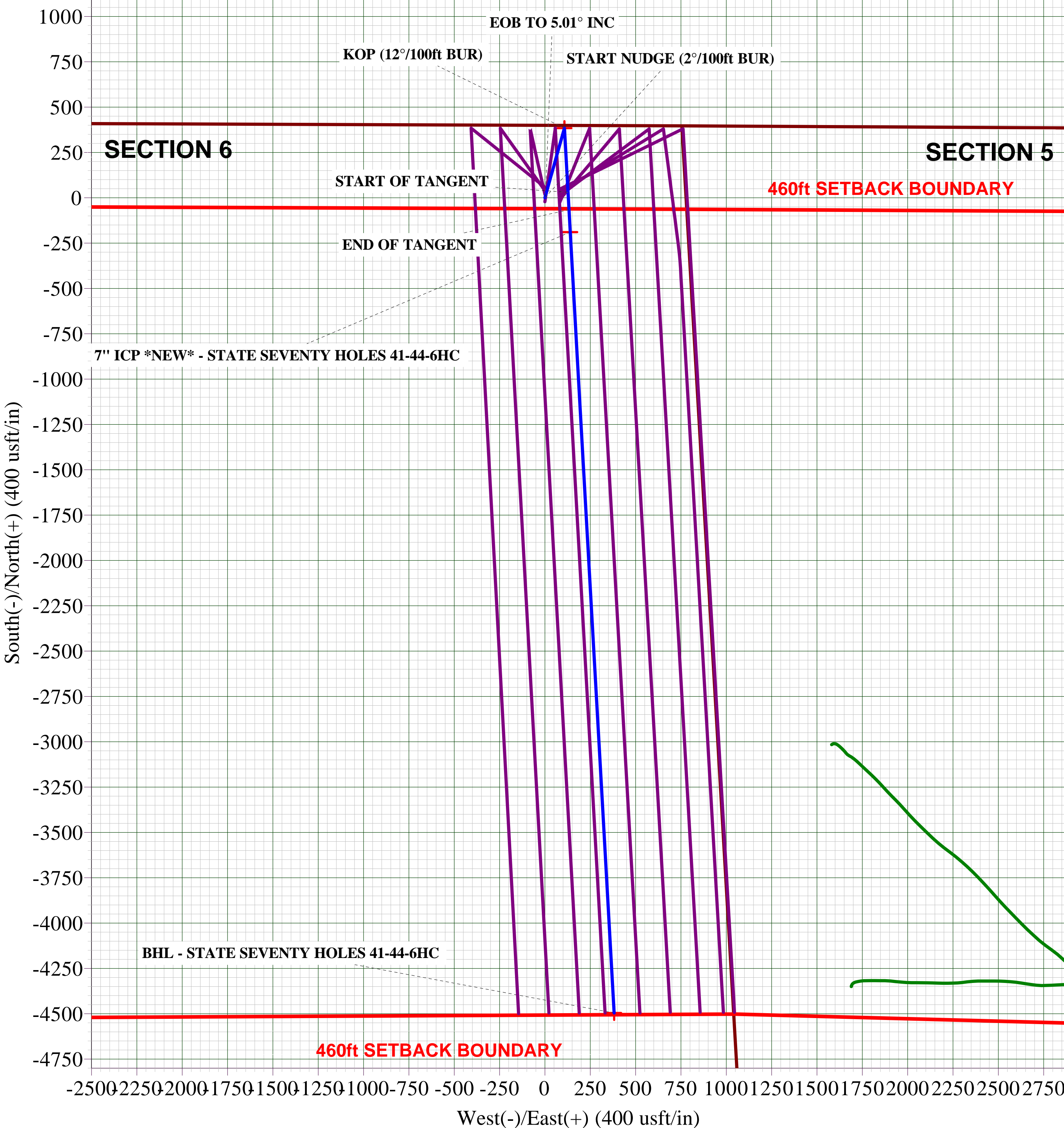
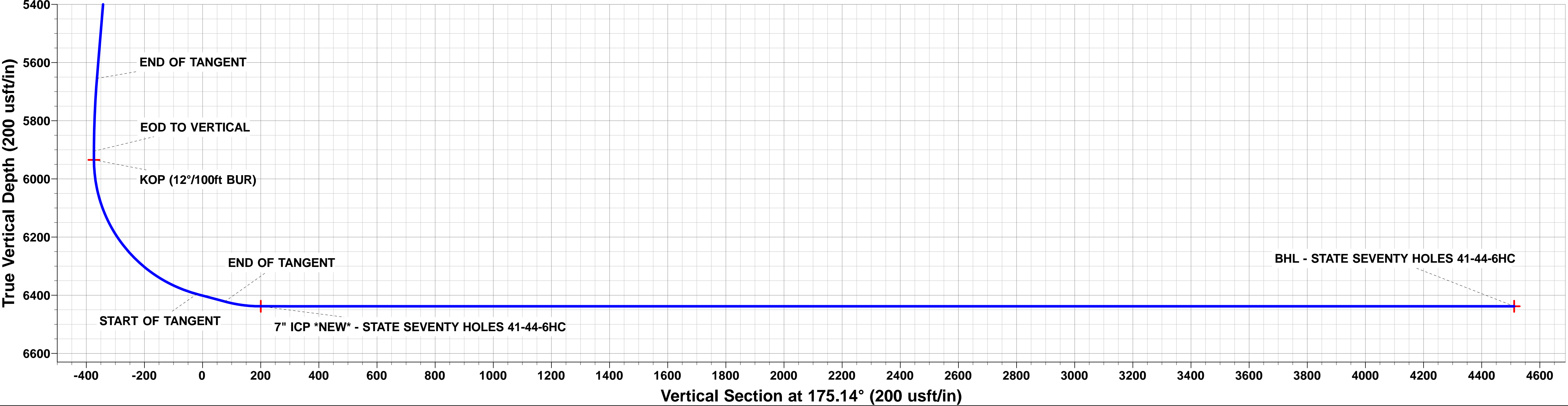
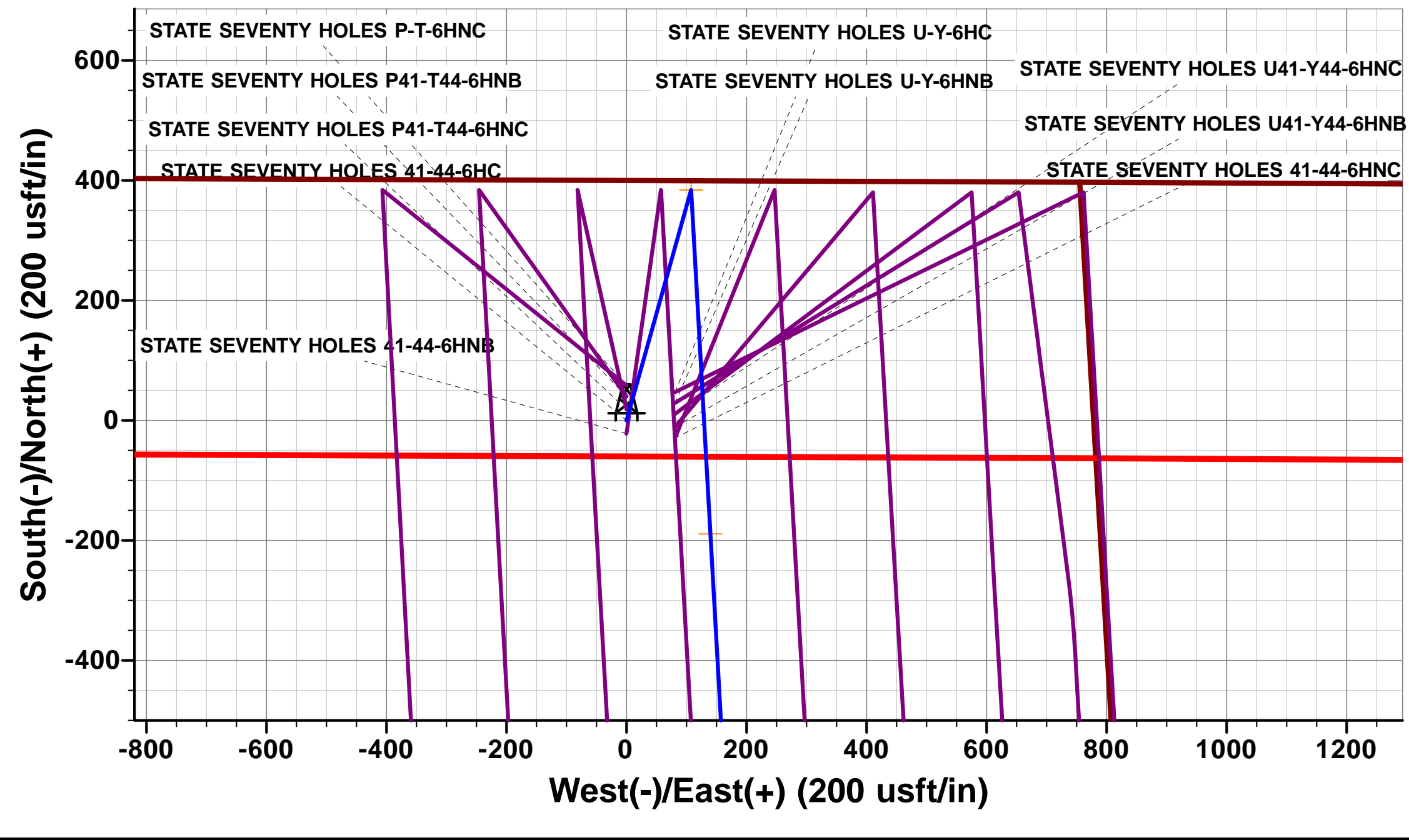
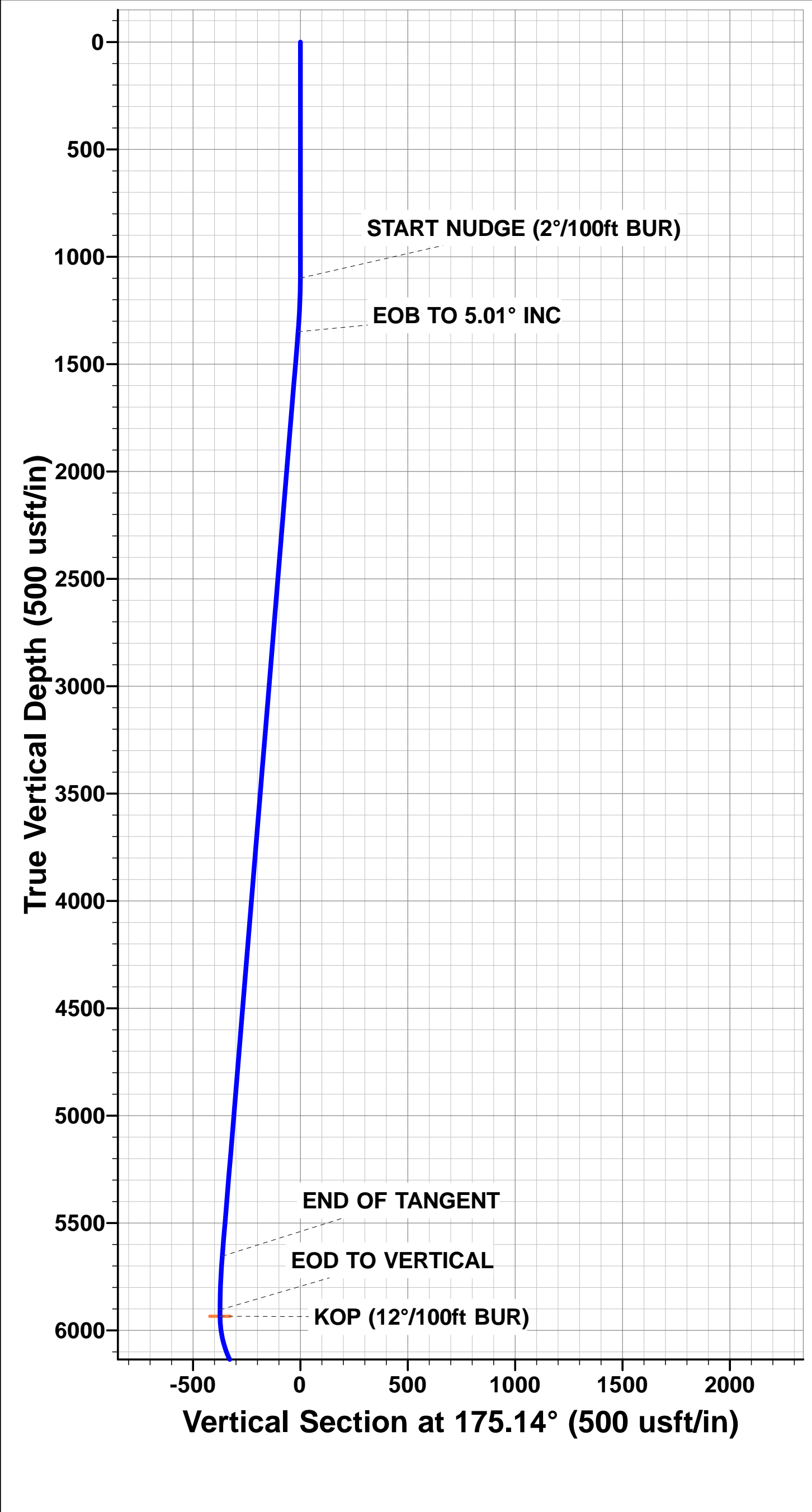
PROPOSED LOCAL COORDINATES:

SHL: 400ft FNL & 779ft FEL Sec 6

7" ICP *NEW*: 589ft FNL & 649ft FEL Sec 6

BHL: 470ft FSL & 660ft FEL Sec 6

WELLBORE TARGET DETAILS (LAT/LONG)					
Name	TVD	+N/-S	+E/-W	Latitude	Longitude
KOP - STATE SEVENTY HOLES 41-44-6HC	5934.7	384.1	107.6	40.349004	-104.362284
7" ICP *NEW* - STATE SEVENTY HOLES 41-44-6HC	6438.0	-189.1	139.8	40.347431	-104.362168
BHL - STATE SEVENTY HOLES 41-44-6HC	6438.0	-4495.5	381.9	40.335610	-104.361300



Planning Report



Database:	EDM 5000.1 Single User Db	Local Co-ordinate Reference:	Well STATE SEVENTY HOLES 41-44-6HC
Company:	BONANZA CREEK ENERGY INC.	TVD Reference:	KB-EST @ 4558.0usft (Original Well Elev)
Project:	WELD COUNTY, COLORADO (NAD 83)	MD Reference:	KB-EST @ 4558.0usft (Original Well Elev)
Site:	NE NE SEC. 6 T4N R62W 6th P.M.	North Reference:	True
Well:	STATE SEVENTY HOLES 41-44-6HC	Survey Calculation Method:	Minimum Curvature
Wellbore:	ORIGINAL WELLBORE		
Design:	PROPOSAL #1		

Project	WELD COUNTY, COLORADO (NAD 83)		
Map System:	US State Plane 1983	System Datum:	Mean Sea Level
Geo Datum:	North American Datum 1983		
Map Zone:	Colorado Northern Zone		Using geodetic scale factor

Site	NE NE SEC. 6 T4N R62W 6th P.M.		
Site Position:		Northing:	1,371,680.11 usft
From:	Lat/Long	Easting:	3,317,072.91 usft
Position Uncertainty:	0.0 usft	Slot Radius:	1.10000ft
		Latitude:	40.348080
		Longitude:	-104.362380
		Grid Convergence:	0.74 °

Well	STATE SEVENTY HOLES 41-44-6HC					
Well Position	+N/-S	-47.4 usft	Northing:	1,371,631.71 usfi	Latitude:	40.347950
	+E/-W	-80.8 usft	Easting:	3,316,992.69 usfi	Longitude:	-104.362670
Position Uncertainty		0.0 usft	Wellhead Elevation:	usfi	Ground Level:	4,541.0 usft

Wellbore	ORIGINAL WELLBORE				
Magnetics	Model Name	Sample Date	Declination (°)	Dip Angle (°)	Field Strength (nT)
	IGRF2010	21/12/2014	8.17	66.95	52,777

Design	PROPOSAL #1			
Audit Notes:				
Version:	Phase:	PROTOTYPE	Tie On Depth:	0.0
Vertical Section:	Depth From (TVD) (usft)	+N/-S (usft)	+E/-W (usft)	Direction (°)
	6,438.0	0.0	0.0	175.14

Plan Sections											
MD (usft)	Inc (°)	Azi (°)	Vertical Depth	SS (usft)	+N/-S (usft)	+E/-W (usft)	Dogleg Rate (°/100usf)	Build Rate (°/100usf)	Turn Rate (°/100usf)	TFO (°)	Target
0.0	0.00	0.00	0.0	-4,558.0	0.0	0.0	0.00	0.00	0.00	0.00	
1,100.0	0.00	0.00	1,100.0	-3,458.0	0.0	0.0	0.00	0.00	0.00	0.00	
1,350.3	5.01	15.65	1,350.0	-3,208.0	10.5	2.9	2.00	2.00	0.00	15.65	
5,671.5	5.01	15.65	5,654.7	1,096.7	373.6	104.7	0.00	0.00	0.00	0.00	
5,921.8	0.00	0.00	5,904.7	1,346.7	384.1	107.6	2.00	-2.00	0.00	180.00	
5,951.8	0.00	0.00	5,934.7	1,376.7	384.1	107.6	0.00	0.00	0.00	0.00	KOP - STATE SEVI
6,576.8	75.00	176.78	6,395.9	1,837.9	30.8	127.5	12.00	12.00	0.00	176.78	
6,676.8	75.00	176.78	6,421.8	1,863.8	-65.7	132.9	0.00	0.00	0.00	0.00	
6,801.8	90.00	176.78	6,438.0	1,880.0	-189.1	139.8	12.00	12.00	0.00	0.00	
11,115.1	90.00	176.78	6,438.0	1,880.0	-4,495.5	381.9	0.00	0.00	0.00	75.85	BHL - STATE SEVI

Planning Report



Database:	EDM 5000.1 Single User Db	Local Co-ordinate Reference:	Well STATE SEVENTY HOLES 41-44-6HC
Company:	BONANZA CREEK ENERGY INC.	TVD Reference:	KB-EST @ 4558.0usft (Original Well Elev)
Project:	WELD COUNTY, COLORADO (NAD 83)	MD Reference:	KB-EST @ 4558.0usft (Original Well Elev)
Site:	NE NE SEC. 6 T4N R62W 6th P.M.	North Reference:	True
Well:	STATE SEVENTY HOLES 41-44-6HC	Survey Calculation Method:	Minimum Curvature
Wellbore:	ORIGINAL WELLBORE		
Design:	PROPOSAL #1		

Planned Survey

MD (usft)	Inc (°)	Azi (°)	TVD (usft)	SS (usft)	+N/-S (usft)	+E/-W (usft)	Vertical Section (usft)	Dogleg Rate (°/100usft)	Build Rate (°/100usft)	Turn Rate (°/100usft)
0.0	0.00	0.00	0.0	4,558.00	0.0	0.0	0.0	0.00	0.00	0.00
100.0	0.00	0.00	100.0	4,458.00	0.0	0.0	0.0	0.00	0.00	0.00
200.0	0.00	0.00	200.0	4,358.00	0.0	0.0	0.0	0.00	0.00	0.00
300.0	0.00	0.00	300.0	4,258.00	0.0	0.0	0.0	0.00	0.00	0.00
400.0	0.00	0.00	400.0	4,158.00	0.0	0.0	0.0	0.00	0.00	0.00
500.0	0.00	0.00	500.0	4,058.00	0.0	0.0	0.0	0.00	0.00	0.00
600.0	0.00	0.00	600.0	3,958.00	0.0	0.0	0.0	0.00	0.00	0.00
700.0	0.00	0.00	700.0	3,858.00	0.0	0.0	0.0	0.00	0.00	0.00
800.0	0.00	0.00	800.0	3,758.00	0.0	0.0	0.0	0.00	0.00	0.00
900.0	0.00	0.00	900.0	3,658.00	0.0	0.0	0.0	0.00	0.00	0.00
1,000.0	0.00	0.00	1,000.0	3,558.00	0.0	0.0	0.0	0.00	0.00	0.00
START NUDGE (2°/100ft BUR)										
1,100.0	0.00	0.00	1,100.0	3,458.00	0.0	0.0	0.0	0.00	0.00	0.00
1,200.0	2.00	15.65	1,200.0	3,358.02	1.7	0.5	-1.6	2.00	2.00	0.00
1,300.0	4.00	15.65	1,299.8	3,258.16	6.7	1.9	-6.5	2.00	2.00	0.00
EOB TO 5.01° INC										
1,350.3	5.01	15.65	1,350.0	3,208.04	10.5	2.9	-10.2	2.00	2.00	0.00
1,400.0	5.01	15.65	1,399.5	3,158.51	14.7	4.1	-14.3	0.00	0.00	0.00
1,500.0	5.01	15.65	1,499.1	3,058.89	23.1	6.5	-22.5	0.00	0.00	0.00
1,600.0	5.01	15.65	1,598.7	2,959.27	31.5	8.8	-30.6	0.00	0.00	0.00
1,700.0	5.01	15.65	1,698.3	2,859.65	39.9	11.2	-38.8	0.00	0.00	0.00
1,800.0	5.01	15.65	1,798.0	2,760.03	48.3	13.5	-47.0	0.00	0.00	0.00
1,900.0	5.01	15.65	1,897.6	2,660.41	56.7	15.9	-55.2	0.00	0.00	0.00
2,000.0	5.01	15.65	1,997.2	2,560.80	65.1	18.2	-63.3	0.00	0.00	0.00
2,100.0	5.01	15.65	2,096.8	2,461.18	73.5	20.6	-71.5	0.00	0.00	0.00
2,200.0	5.01	15.65	2,196.4	2,361.56	81.9	22.9	-79.7	0.00	0.00	0.00
2,300.0	5.01	15.65	2,296.1	2,261.94	90.3	25.3	-87.8	0.00	0.00	0.00
2,400.0	5.01	15.65	2,395.7	2,162.32	98.7	27.7	-96.0	0.00	0.00	0.00
2,500.0	5.01	15.65	2,495.3	2,062.70	107.1	30.0	-104.2	0.00	0.00	0.00
2,600.0	5.01	15.65	2,594.9	1,963.08	115.5	32.4	-112.4	0.00	0.00	0.00
2,700.0	5.01	15.65	2,694.5	1,863.47	123.9	34.7	-120.5	0.00	0.00	0.00
2,800.0	5.01	15.65	2,794.2	1,763.85	132.3	37.1	-128.7	0.00	0.00	0.00
2,900.0	5.01	15.65	2,893.8	1,664.23	140.7	39.4	-136.9	0.00	0.00	0.00
3,000.0	5.01	15.65	2,993.4	1,564.61	149.1	41.8	-145.1	0.00	0.00	0.00
3,100.0	5.01	15.65	3,093.0	1,464.99	157.5	44.1	-153.2	0.00	0.00	0.00
3,200.0	5.01	15.65	3,192.6	1,365.37	165.9	46.5	-161.4	0.00	0.00	0.00
3,300.0	5.01	15.65	3,292.2	1,265.75	174.3	48.8	-169.6	0.00	0.00	0.00
3,400.0	5.01	15.65	3,391.9	1,166.14	182.7	51.2	-177.7	0.00	0.00	0.00
3,500.0	5.01	15.65	3,491.5	1,066.52	191.1	53.5	-185.9	0.00	0.00	0.00
3,600.0	5.01	15.65	3,591.1	966.90	199.5	55.9	-194.1	0.00	0.00	0.00
3,700.0	5.01	15.65	3,690.7	867.28	207.9	58.3	-202.3	0.00	0.00	0.00
3,800.0	5.01	15.65	3,790.3	767.66	216.3	60.6	-210.4	0.00	0.00	0.00
3,900.0	5.01	15.65	3,890.0	668.04	224.7	63.0	-218.6	0.00	0.00	0.00
4,000.0	5.01	15.65	3,989.6	568.42	233.1	65.3	-226.8	0.00	0.00	0.00
4,100.0	5.01	15.65	4,089.2	468.80	241.5	67.7	-234.9	0.00	0.00	0.00
4,200.0	5.01	15.65	4,188.8	369.19	249.9	70.0	-243.1	0.00	0.00	0.00
4,300.0	5.01	15.65	4,288.4	269.57	258.3	72.4	-251.3	0.00	0.00	0.00
4,400.0	5.01	15.65	4,388.1	169.95	266.7	74.7	-259.5	0.00	0.00	0.00
4,500.0	5.01	15.65	4,487.7	70.33	275.2	77.1	-267.6	0.00	0.00	0.00
4,600.0	5.01	15.65	4,587.3	-29.29	283.6	79.4	-275.8	0.00	0.00	0.00
4,700.0	5.01	15.65	4,686.9	-128.91	292.0	81.8	-284.0	0.00	0.00	0.00
4,800.0	5.01	15.65	4,786.5	-228.53	300.4	84.1	-292.2	0.00	0.00	0.00
4,900.0	5.01	15.65	4,886.1	-328.14	308.8	86.5	-300.3	0.00	0.00	0.00
5,000.0	5.01	15.65	4,985.8	-427.76	317.2	88.8	-308.5	0.00	0.00	0.00

Planning Report



Database:	EDM 5000.1 Single User Db	Local Co-ordinate Reference:	Well STATE SEVENTY HOLES 41-44-6HC
Company:	BONANZA CREEK ENERGY INC.	TVD Reference:	KB-EST @ 4558.0usft (Original Well Elev)
Project:	WELD COUNTY, COLORADO (NAD 83)	MD Reference:	KB-EST @ 4558.0usft (Original Well Elev)
Site:	NE NE SEC. 6 T4N R62W 6th P.M.	North Reference:	True
Well:	STATE SEVENTY HOLES 41-44-6HC	Survey Calculation Method:	Minimum Curvature
Wellbore:	ORIGINAL WELLBORE		
Design:	PROPOSAL #1		

Planned Survey

MD (usft)	Inc (°)	Azi (°)	TVD (usft)	SS (usft)	+N/-S (usft)	+E/-W (usft)	Vertical Section (usft)	Dogleg Rate (°/100usft)	Build Rate (°/100usft)	Turn Rate (°/100usft)
5,100.0	5.01	15.65	5,085.4	-527.38	325.6	91.2	-316.7	0.00	0.00	0.00
5,200.0	5.01	15.65	5,185.0	-627.00	334.0	93.6	-324.8	0.00	0.00	0.00
5,300.0	5.01	15.65	5,284.6	-726.62	342.4	95.9	-333.0	0.00	0.00	0.00
5,400.0	5.01	15.65	5,384.2	-826.24	350.8	98.3	-341.2	0.00	0.00	0.00
5,500.0	5.01	15.65	5,483.9	-925.86	359.2	100.6	-349.4	0.00	0.00	0.00
5,600.0	5.01	15.65	5,583.5	-1,025.47	367.6	103.0	-357.5	0.00	0.00	0.00
END OF TANGENT										
5,671.5	5.01	15.65	5,654.7	-1,096.74	373.6	104.7	-363.4	0.00	0.00	0.00
5,700.0	4.44	15.65	5,683.1	-1,125.11	375.8	105.3	-365.6	2.00	-2.00	0.00
5,800.0	2.44	15.65	5,782.9	-1,224.92	381.6	106.9	-371.2	2.00	-2.00	0.00
5,900.0	0.44	15.65	5,882.9	-1,324.88	384.0	107.6	-373.5	2.00	-2.00	0.00
EOD TO VERTICAL										
5,921.8	0.00	0.00	5,904.7	-1,346.70	384.1	107.6	-373.6	2.00	-2.00	0.00
KOP (12°/100ft BUR)										
5,951.8	0.00	0.00	5,934.7	-1,376.70	384.1	107.6	-373.6	0.00	0.00	0.00
6,000.0	5.78	176.78	5,982.8	-1,424.80	381.7	107.7	-371.2	12.00	12.00	0.00
6,100.0	17.78	176.78	6,080.5	-1,522.52	361.3	108.9	-350.8	12.00	12.00	0.00
6,200.0	29.78	176.78	6,171.9	-1,613.86	321.1	111.1	-310.6	12.00	12.00	0.00
6,300.0	41.78	176.78	6,252.8	-1,694.83	262.9	114.4	-252.2	12.00	12.00	0.00
6,400.0	53.78	176.78	6,319.9	-1,761.91	189.1	118.6	-178.3	12.00	12.00	0.00
6,500.0	65.78	176.78	6,370.1	-1,812.14	102.9	123.4	-92.1	12.00	12.00	0.00
START OF TANGENT										
6,576.8	75.00	176.78	6,395.9	-1,837.90	30.8	127.5	-19.9	12.00	12.00	0.00
6,600.0	75.00	176.78	6,401.9	-1,843.90	8.4	128.7	2.5	0.00	0.00	0.00
END OF TANGENT										
6,676.8	75.00	176.78	6,421.8	-1,863.78	-65.7	132.9	76.7	0.00	0.00	0.00
6,700.0	77.78	176.78	6,427.2	-1,869.23	-88.2	134.2	99.2	12.00	12.00	0.00
6,800.0	89.78	176.78	6,438.0	-1,880.04	-187.2	139.7	198.4	12.00	12.00	0.00
7" ICP *NEW* - STATE SEVENTY HOLES 41-44-6HC										
6,801.8	90.00	176.78	6,438.0	-1,880.05	-189.1	139.8	200.2	12.00	12.00	0.00
6,900.0	90.00	176.78	6,438.0	-1,880.05	-287.1	145.4	298.4	0.00	0.00	0.00
7,000.0	90.00	176.78	6,438.0	-1,880.05	-386.9	151.0	398.3	0.00	0.00	0.00
7,100.0	90.00	176.78	6,438.0	-1,880.05	-486.8	156.6	498.3	0.00	0.00	0.00
7,200.0	90.00	176.78	6,438.0	-1,880.05	-586.6	162.2	598.2	0.00	0.00	0.00
7,300.0	90.00	176.78	6,438.0	-1,880.05	-686.4	167.8	698.2	0.00	0.00	0.00
7,400.0	90.00	176.78	6,438.0	-1,880.05	-786.3	173.4	798.2	0.00	0.00	0.00
7,500.0	90.00	176.78	6,438.0	-1,880.05	-886.1	179.1	898.1	0.00	0.00	0.00
7,600.0	90.00	176.78	6,438.0	-1,880.05	-986.0	184.7	998.1	0.00	0.00	0.00
7,700.0	90.00	176.78	6,438.0	-1,880.04	-1,085.8	190.3	1,098.0	0.00	0.00	0.00
7,800.0	90.00	176.78	6,438.0	-1,880.04	-1,185.7	195.9	1,198.0	0.00	0.00	0.00
7,900.0	90.00	176.78	6,438.0	-1,880.04	-1,285.5	201.5	1,297.9	0.00	0.00	0.00
8,000.0	90.00	176.78	6,438.0	-1,880.04	-1,385.3	207.1	1,397.9	0.00	0.00	0.00
8,100.0	90.00	176.78	6,438.0	-1,880.04	-1,485.2	212.7	1,497.9	0.00	0.00	0.00
8,200.0	90.00	176.78	6,438.0	-1,880.04	-1,585.0	218.4	1,597.8	0.00	0.00	0.00
8,300.0	90.00	176.78	6,438.0	-1,880.04	-1,684.9	224.0	1,697.8	0.00	0.00	0.00
8,400.0	90.00	176.78	6,438.0	-1,880.04	-1,784.7	229.6	1,797.7	0.00	0.00	0.00
8,500.0	90.00	176.78	6,438.0	-1,880.04	-1,884.6	235.2	1,897.7	0.00	0.00	0.00
8,600.0	90.00	176.78	6,438.0	-1,880.04	-1,984.4	240.8	1,997.7	0.00	0.00	0.00
8,700.0	90.00	176.78	6,438.0	-1,880.04	-2,084.2	246.4	2,097.6	0.00	0.00	0.00
8,800.0	90.00	176.78	6,438.0	-1,880.04	-2,184.1	252.0	2,197.6	0.00	0.00	0.00
8,900.0	90.00	176.78	6,438.0	-1,880.04	-2,283.9	257.7	2,297.5	0.00	0.00	0.00
9,000.0	90.00	176.78	6,438.0	-1,880.03	-2,383.8	263.3	2,397.5	0.00	0.00	0.00
9,100.0	90.00	176.78	6,438.0	-1,880.03	-2,483.6	268.9	2,497.5	0.00	0.00	0.00

Planning Report



Database:	EDM 5000.1 Single User Db	Local Co-ordinate Reference:	Well STATE SEVENTY HOLES 41-44-6HC
Company:	BONANZA CREEK ENERGY INC.	TVD Reference:	KB-EST @ 4558.0usft (Original Well Elev)
Project:	WELD COUNTY, COLORADO (NAD 83)	MD Reference:	KB-EST @ 4558.0usft (Original Well Elev)
Site:	NE NE SEC. 6 T4N R62W 6th P.M.	North Reference:	True
Well:	STATE SEVENTY HOLES 41-44-6HC	Survey Calculation Method:	Minimum Curvature
Wellbore:	ORIGINAL WELLBORE		
Design:	PROPOSAL #1		

Planned Survey										
MD (usft)	Inc (°)	Azi (°)	TVD (usft)	SS (usft)	+N/-S (usft)	+E/-W (usft)	Vertical Section (usft)	Dogleg Rate (°/100usft)	Build Rate (°/100usft)	Turn Rate (°/100usft)
9,200.0	90.00	176.78	6,438.0	-1,880.03	-2,583.5	274.5	2,597.4	0.00	0.00	0.00
9,300.0	90.00	176.78	6,438.0	-1,880.03	-2,683.3	280.1	2,697.4	0.00	0.00	0.00
9,400.0	90.00	176.78	6,438.0	-1,880.03	-2,783.1	285.7	2,797.3	0.00	0.00	0.00
9,500.0	90.00	176.78	6,438.0	-1,880.03	-2,883.0	291.3	2,897.3	0.00	0.00	0.00
9,600.0	90.00	176.78	6,438.0	-1,880.03	-2,982.8	296.9	2,997.3	0.00	0.00	0.00
9,700.0	90.00	176.78	6,438.0	-1,880.03	-3,082.7	302.6	3,097.2	0.00	0.00	0.00
9,800.0	90.00	176.78	6,438.0	-1,880.02	-3,182.5	308.2	3,197.2	0.00	0.00	0.00
9,900.0	90.00	176.78	6,438.0	-1,880.02	-3,282.3	313.8	3,297.1	0.00	0.00	0.00
10,000.0	90.00	176.78	6,438.0	-1,880.02	-3,382.2	319.4	3,397.1	0.00	0.00	0.00
10,100.0	90.00	176.78	6,438.0	-1,880.02	-3,482.0	325.0	3,497.0	0.00	0.00	0.00
10,200.0	90.00	176.78	6,438.0	-1,880.02	-3,581.9	330.6	3,597.0	0.00	0.00	0.00
10,300.0	90.00	176.78	6,438.0	-1,880.02	-3,681.7	336.2	3,697.0	0.00	0.00	0.00
10,400.0	90.00	176.78	6,438.0	-1,880.01	-3,781.6	341.8	3,796.9	0.00	0.00	0.00
10,500.0	90.00	176.78	6,438.0	-1,880.01	-3,881.4	347.4	3,896.9	0.00	0.00	0.00
10,600.0	90.00	176.78	6,438.0	-1,880.01	-3,981.2	353.0	3,996.8	0.00	0.00	0.00
10,700.0	90.00	176.78	6,438.0	-1,880.01	-4,081.1	358.7	4,096.8	0.00	0.00	0.00
10,800.0	90.00	176.78	6,438.0	-1,880.01	-4,180.9	364.3	4,196.8	0.00	0.00	0.00
10,900.0	90.00	176.78	6,438.0	-1,880.00	-4,280.8	369.9	4,296.7	0.00	0.00	0.00
11,000.0	90.00	176.78	6,438.0	-1,880.00	-4,380.6	375.5	4,396.7	0.00	0.00	0.00
11,100.0	90.00	176.78	6,438.0	-1,880.00	-4,480.5	381.1	4,496.6	0.00	0.00	0.00
BHL - STATE SEVENTY HOLES 41-44-6HC										
11,115.1	90.00	176.78	6,438.0	-1,880.00	-4,495.5	381.9	4,511.7	0.00	0.00	0.00

Plan Annotations				
MD (usft)	TVD (usft)	Local Coordinates		Comment
		+N/-S (usft)	+E/-W (usft)	
1,100.0	1,100.0	0.0	0.0	START NUDGE (2°/100ft BUR)
1,350.3	1,350.0	10.5	2.9	EOB TO 5.01° INC
5,671.5	5,654.7	373.6	104.7	END OF TANGENT
5,921.8	5,904.7	384.1	107.6	EOD TO VERTICAL
5,951.8	5,934.7	384.1	107.6	KOP (12°/100ft BUR)
6,576.8	6,395.9	30.8	127.5	START OF TANGENT
6,676.8	6,421.8	-65.7	132.9	END OF TANGENT
6,801.8	6,438.0	-189.1	139.8	7" ICP *NEW* - STATE SEVENTY HOLES 41-44-6HC
11,115.1	6,438.0	-4,495.5	381.9	BHL - STATE SEVENTY HOLES 41-44-6HC