

BONANZA CREEK ENERGY INC.

WELD COUNTY, COLORADO (NAD 83)

NE NE SEC. 6 T4N R62W 6th P.M.

STATE SEVENTY HOLES P41-T44-6HNB

ORIGINAL WELLBORE

21 December, 2014

Plan: PROPOSAL #1





Project: WELD COUNTY, COLORADO (NAD 83)
Site: NE NE SEC. 6 T4N R62W 6th P.M.
Well: STATE SEVENTY HOLES P41-T44-6HNB
Wellbore: ORIGINAL WELLBORE
Design: PROPOSAL #1

ANNOTATIONS

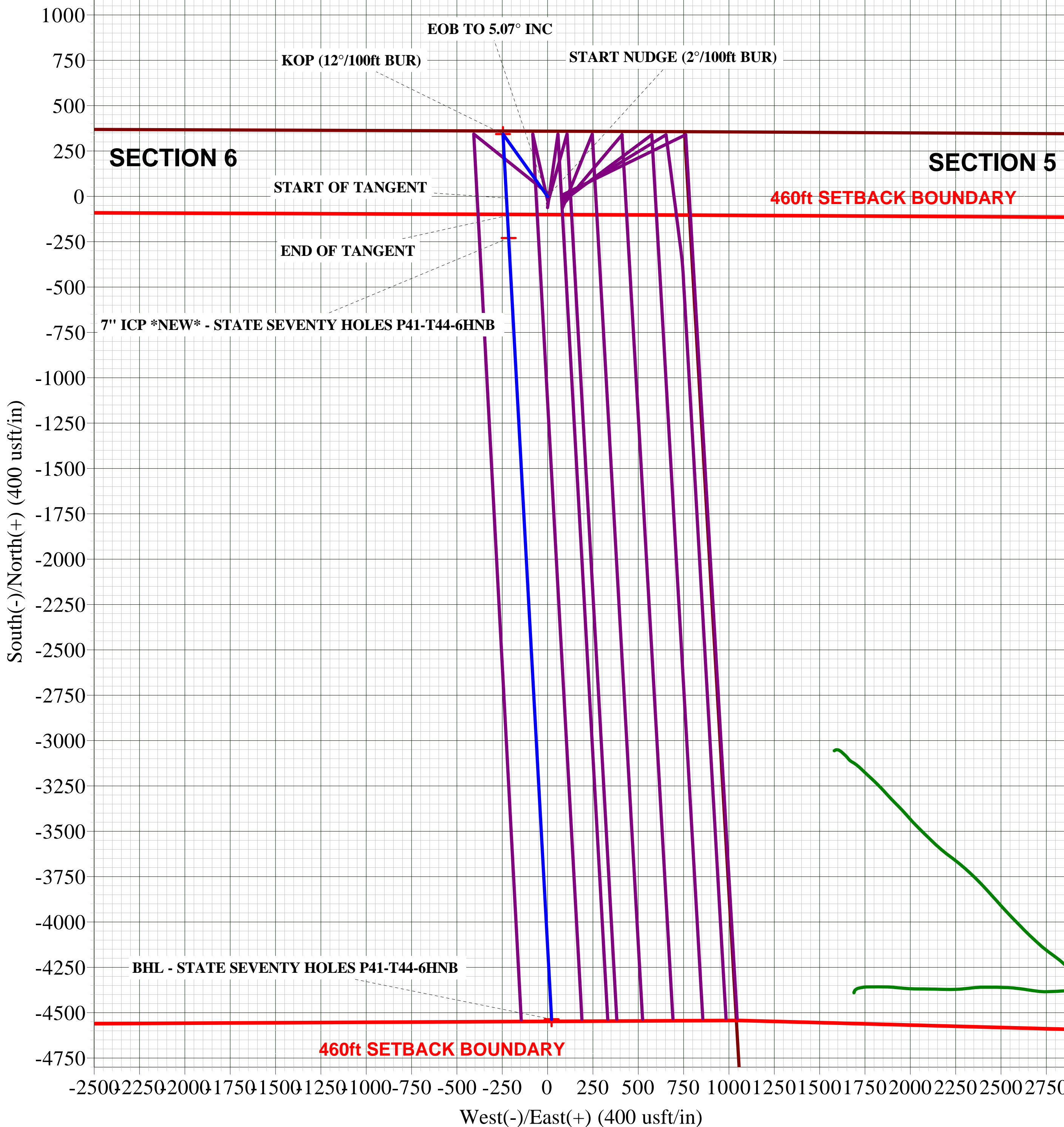
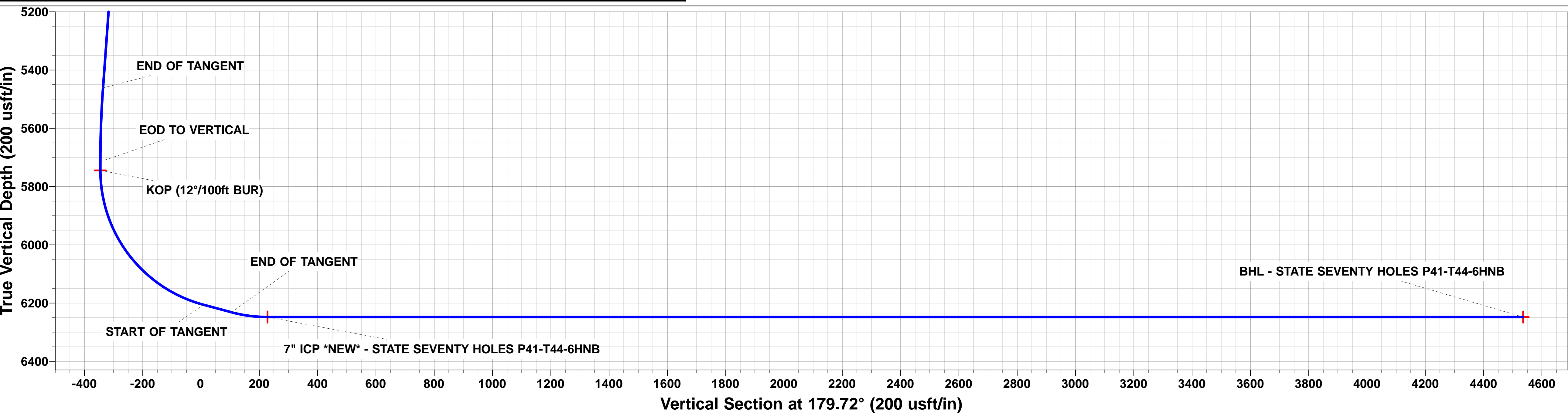
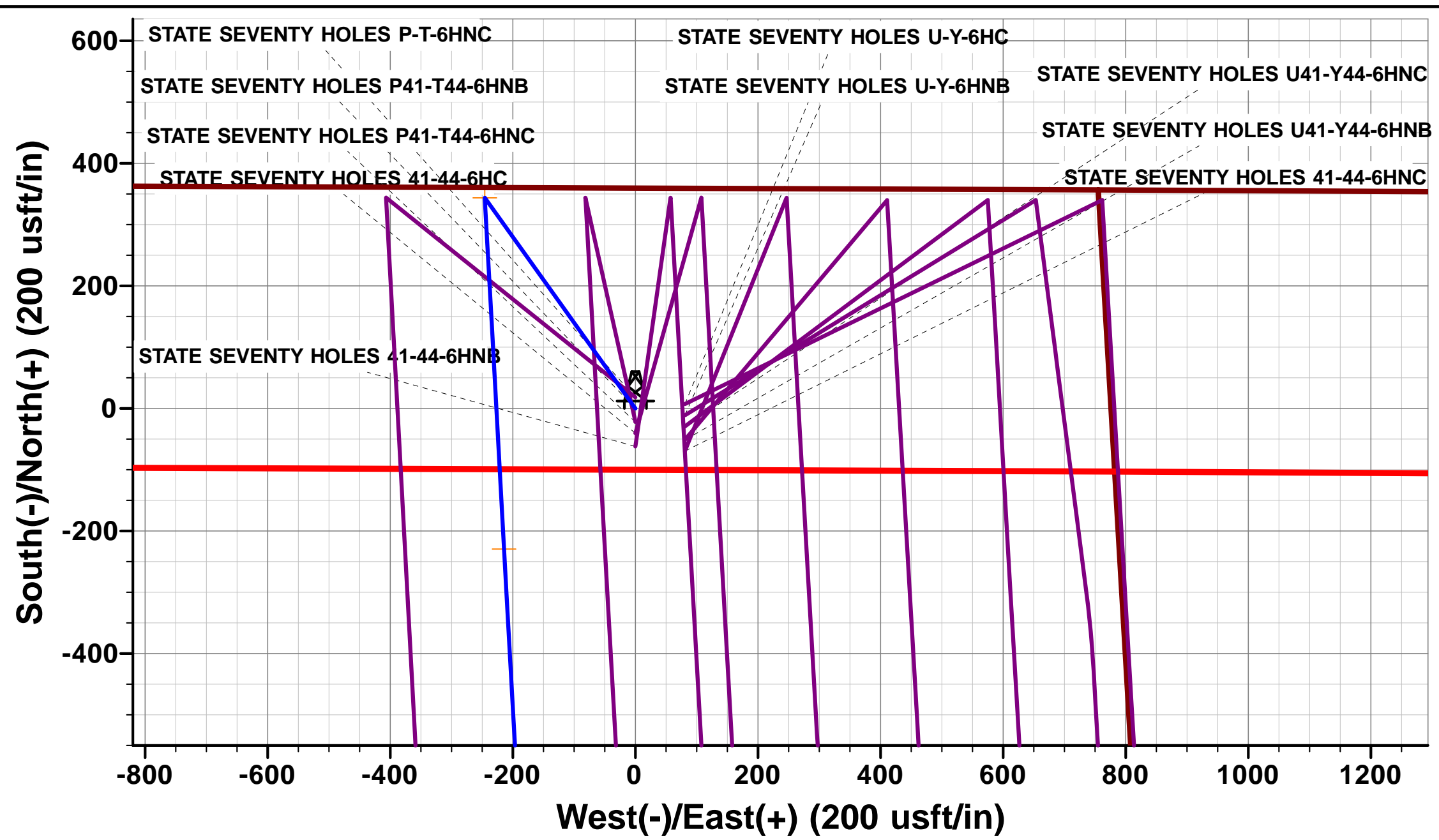
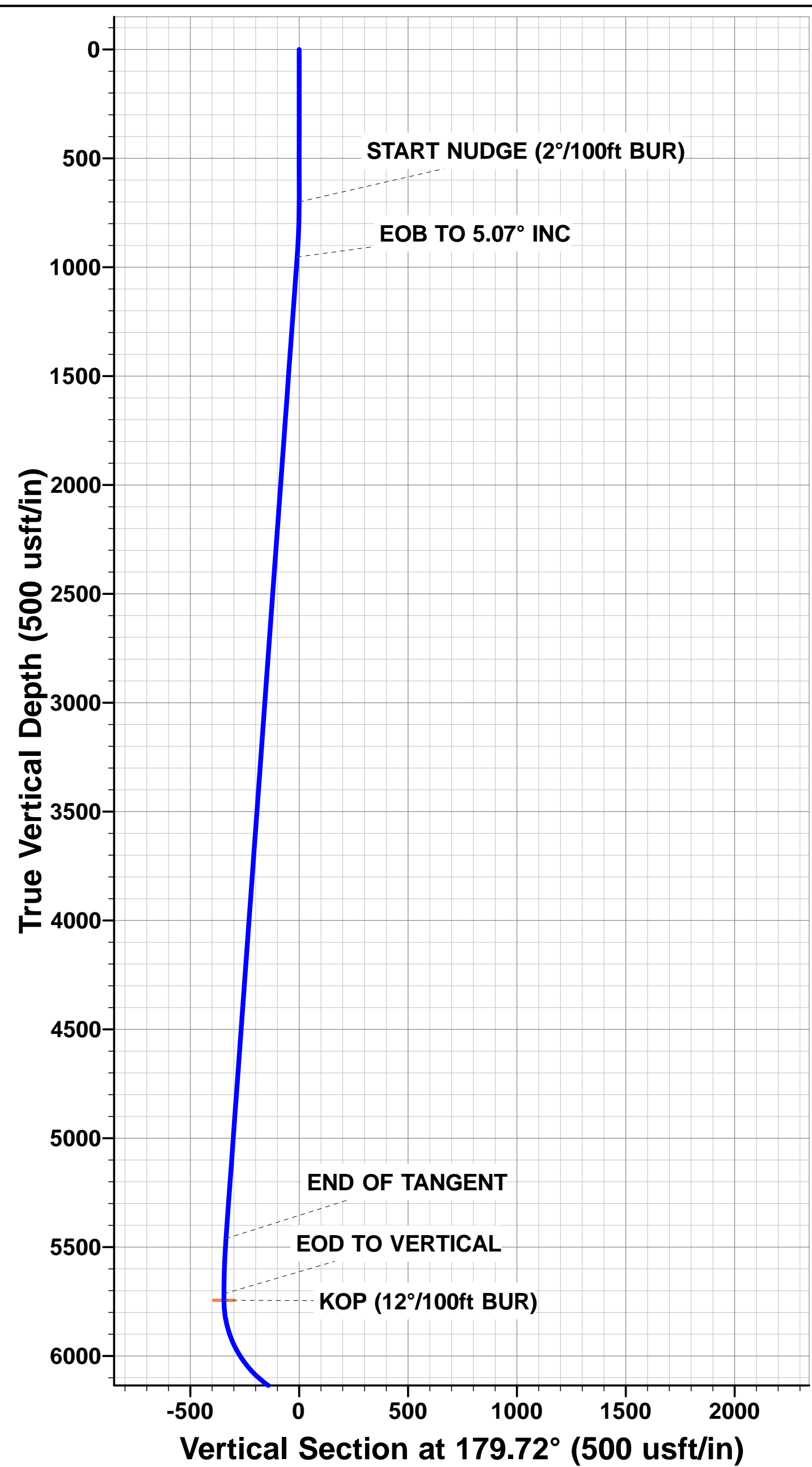
TVD	MD	Inc	Azi	+N/-S	+E/-W	VSec	Dep	Annotation
700.0	700.0	0.00	0.00	0.0	0.0	0.0	0.0	START NUDGE (2°/100ft BUR)
953.4	953.7	5.07	324.46	9.1	-6.5	-9.2	11.2	EOB TO 5.07° INC
5461.3	5479.4	5.07	324.46	334.9	-239.2	-336.0	411.5	END OF TANGENT
5714.7	5733.1	0.00	0.00	344.0	-245.7	-345.2	422.7	EOD TO VERTICAL
5744.7	5763.1	0.00	0.00	344.0	-245.7	-345.2	422.7	KOP (12°/100ft BUR)
6205.9	6388.1	75.00	176.86	-9.4	-226.3	8.2	776.6	START OF TANGENT
6231.8	6488.1	75.00	176.86	-105.8	-221.0	104.7	873.2	END OF TANGENT
6248.0	6613.1	90.00	176.86	-229.2	-214.3	228.1	996.8	7" ICP *NEW* - STATE SEVENTY HOLES P41-T44-6HNB
6248.0	10926.0	90.00	176.85	-4535.6	22.3	4535.7	5309.7	BHL - STATE SEVENTY HOLES P41-T44-6HNB

PROPOSED LOCAL COORDINATES:

SHL: 360ft FNL & 776ft FEL Sec 6
7" ICP *NEW*: 589ft FNL & 1002ft FEL Sec 6
BHL: 470ft FSL & 1017ft FEL Sec 6

WELLBORE TARGET DETAILS (LAT/LONG)

Name	TVD	+N/-S	+E/-W	Latitude	Longitude
KOP - STATE SEVENTY HOLES P41-T44-6HNB	5744.7	344.0	-245.7	40.349004	-104.363551
7" ICP *NEW* - STATE SEVENTY HOLES P41-T44-6HNB	6248.0	-229.2	-214.3	40.347431	-104.363439
BHL - STATE SEVENTY HOLES P41-T44-6HNB	6248.0	-4535.6	22.3	40.335610	-104.362590



Planning Report



Database:	EDM 5000.1 Single User Db	Local Co-ordinate Reference:	Well STATE SEVENTY HOLES P41-T44-6HNB
Company:	BONANZA CREEK ENERGY INC.	TVD Reference:	KB-EST @ 4558.0usft (Original Well Elev)
Project:	WELD COUNTY, COLORADO (NAD 83)	MD Reference:	KB-EST @ 4558.0usft (Original Well Elev)
Site:	NE NE SEC. 6 T4N R62W 6th P.M.	North Reference:	True
Well:	STATE SEVENTY HOLES P41-T44-6HNB	Survey Calculation Method:	Minimum Curvature
Wellbore:	ORIGINAL WELLBORE		
Design:	PROPOSAL #1		

Project	WELD COUNTY, COLORADO (NAD 83)		
Map System:	US State Plane 1983	System Datum:	Mean Sea Level
Geo Datum:	North American Datum 1983		
Map Zone:	Colorado Northern Zone		Using geodetic scale factor

Site	NE NE SEC. 6 T4N R62W 6th P.M.		
Site Position:		Northing:	1,371,680.11 usft
From:	Lat/Long	Easting:	3,317,072.91 usft
Position Uncertainty:	0.0 usft	Slot Radius:	1.10000ft
		Latitude:	40.348080
		Longitude:	-104.362380
		Grid Convergence:	0.74 °

Well	STATE SEVENTY HOLES P41-T44-6HNB		
Well Position	+N/-S	-7.3 usft	Northing:
	+E/-W	-80.8 usft	Easting:
Position Uncertainty		0.0 usft	Wellhead Elevation:
			Latitude:
			Longitude:
			Ground Level:

Wellbore	ORIGINAL WELLBORE				
Magnetics	Model Name	Sample Date	Declination (°)	Dip Angle (°)	Field Strength (nT)
	IGRF2010	21/12/2014	8.17	66.95	52,777

Design	PROPOSAL #1			
Audit Notes:				
Version:	Phase:	PROTOTYPE	Tie On Depth:	0.0
Vertical Section:	Depth From (TVD) (usft)	+N/-S (usft)	+E/-W (usft)	Direction (°)
	6,248.0	0.0	0.0	179.72

Plan Sections											
MD (usft)	Inc (°)	Azi (°)	Vertical Depth	SS (usft)	+N/-S (usft)	+E/-W (usft)	Dogleg Rate (°/100usf)	Build Rate (°/100usf)	Turn Rate (°/100usf)	TFO (°)	Target
0.0	0.00	0.00	0.0	-4,558.0	0.0	0.0	0.00	0.00	0.00	0.00	
700.0	0.00	0.00	700.0	-3,858.0	0.0	0.0	0.00	0.00	0.00	0.00	
953.7	5.07	324.46	953.4	-3,604.6	9.1	-6.5	2.00	2.00	0.00	324.46	
5,479.4	5.07	324.46	5,461.3	903.3	334.9	-239.2	0.00	0.00	0.00	0.00	
5,733.1	0.00	0.00	5,714.7	1,156.7	344.0	-245.7	2.00	-2.00	0.00	180.00	
5,763.1	0.00	0.00	5,744.7	1,186.7	344.0	-245.7	0.00	0.00	0.00	0.00	KOP - STATE SEVI
6,388.1	75.00	176.86	6,205.9	1,647.9	-9.4	-226.3	12.00	12.00	0.00	176.86	
6,488.1	75.00	176.86	6,231.8	1,673.8	-105.8	-221.0	0.00	0.00	0.00	0.00	
6,613.1	90.00	176.86	6,248.0	1,690.0	-229.2	-214.3	12.00	12.00	0.00	0.00	
10,926.0	90.00	176.85	6,248.0	1,690.0	-4,535.6	22.3	0.00	0.00	0.00	-81.56	BHL - STATE SEVE

Planning Report



Database:	EDM 5000.1 Single User Db	Local Co-ordinate Reference:	Well STATE SEVENTY HOLES P41-T44-6HNB
Company:	BONANZA CREEK ENERGY INC.	TVD Reference:	KB-EST @ 4558.0usft (Original Well Elev)
Project:	WELD COUNTY, COLORADO (NAD 83)	MD Reference:	KB-EST @ 4558.0usft (Original Well Elev)
Site:	NE NE SEC. 6 T4N R62W 6th P.M.	North Reference:	True
Well:	STATE SEVENTY HOLES P41-T44-6HNB	Survey Calculation Method:	Minimum Curvature
Wellbore:	ORIGINAL WELLBORE		
Design:	PROPOSAL #1		

Planned Survey

MD (usft)	Inc (°)	Azi (°)	TVD (usft)	SS (usft)	+N/-S (usft)	+E/-W (usft)	Vertical Section (usft)	Dogleg Rate (°/100usft)	Build Rate (°/100usft)	Turn Rate (°/100usft)
0.0	0.00	0.00	0.0	4,558.00	0.0	0.0	0.0	0.00	0.00	0.00
100.0	0.00	0.00	100.0	4,458.00	0.0	0.0	0.0	0.00	0.00	0.00
200.0	0.00	0.00	200.0	4,358.00	0.0	0.0	0.0	0.00	0.00	0.00
300.0	0.00	0.00	300.0	4,258.00	0.0	0.0	0.0	0.00	0.00	0.00
400.0	0.00	0.00	400.0	4,158.00	0.0	0.0	0.0	0.00	0.00	0.00
500.0	0.00	0.00	500.0	4,058.00	0.0	0.0	0.0	0.00	0.00	0.00
600.0	0.00	0.00	600.0	3,958.00	0.0	0.0	0.0	0.00	0.00	0.00
START NUDGE (2°/100ft BUR)										
700.0	0.00	0.00	700.0	3,858.00	0.0	0.0	0.0	0.00	0.00	0.00
800.0	2.00	324.46	800.0	3,758.02	1.4	-1.0	-1.4	2.00	2.00	0.00
900.0	4.00	324.46	899.8	3,658.16	5.7	-4.1	-5.7	2.00	2.00	0.00
EOB TO 5.07° INC										
953.7	5.07	324.46	953.4	3,604.62	9.1	-6.5	-9.2	2.00	2.00	0.00
1,000.0	5.07	324.46	999.5	3,558.51	12.5	-8.9	-12.5	0.00	0.00	0.00
1,100.0	5.07	324.46	1,099.1	3,458.90	19.7	-14.0	-19.7	0.00	0.00	0.00
1,200.0	5.07	324.46	1,198.7	3,359.30	26.9	-19.2	-27.0	0.00	0.00	0.00
1,300.0	5.07	324.46	1,298.3	3,259.69	34.1	-24.3	-34.2	0.00	0.00	0.00
1,400.0	5.07	324.46	1,397.9	3,160.08	41.3	-29.5	-41.4	0.00	0.00	0.00
1,500.0	5.07	324.46	1,497.5	3,060.47	48.5	-34.6	-48.6	0.00	0.00	0.00
1,600.0	5.07	324.46	1,597.1	2,960.86	55.7	-39.7	-55.8	0.00	0.00	0.00
1,700.0	5.07	324.46	1,696.7	2,861.26	62.8	-44.9	-63.1	0.00	0.00	0.00
1,800.0	5.07	324.46	1,796.4	2,761.65	70.0	-50.0	-70.3	0.00	0.00	0.00
1,900.0	5.07	324.46	1,896.0	2,662.04	77.2	-55.2	-77.5	0.00	0.00	0.00
2,000.0	5.07	324.46	1,995.6	2,562.43	84.4	-60.3	-84.7	0.00	0.00	0.00
2,100.0	5.07	324.46	2,095.2	2,462.82	91.6	-65.5	-92.0	0.00	0.00	0.00
2,200.0	5.07	324.46	2,194.8	2,363.22	98.8	-70.6	-99.2	0.00	0.00	0.00
2,300.0	5.07	324.46	2,294.4	2,263.61	106.0	-75.7	-106.4	0.00	0.00	0.00
2,400.0	5.07	324.46	2,394.0	2,164.00	113.2	-80.9	-113.6	0.00	0.00	0.00
2,500.0	5.07	324.46	2,493.6	2,064.39	120.4	-86.0	-120.8	0.00	0.00	0.00
2,600.0	5.07	324.46	2,593.2	1,964.78	127.6	-91.2	-128.1	0.00	0.00	0.00
2,700.0	5.07	324.46	2,692.8	1,865.18	134.8	-96.3	-135.3	0.00	0.00	0.00
2,800.0	5.07	324.46	2,792.4	1,765.57	142.0	-101.4	-142.5	0.00	0.00	0.00
2,900.0	5.07	324.46	2,892.0	1,665.96	149.2	-106.6	-149.7	0.00	0.00	0.00
3,000.0	5.07	324.46	2,991.6	1,566.35	156.4	-111.7	-157.0	0.00	0.00	0.00
3,100.0	5.07	324.46	3,091.3	1,466.74	163.6	-116.9	-164.2	0.00	0.00	0.00
3,200.0	5.07	324.46	3,190.9	1,367.13	170.8	-122.0	-171.4	0.00	0.00	0.00
3,300.0	5.07	324.46	3,290.5	1,267.53	178.0	-127.1	-178.6	0.00	0.00	0.00
3,400.0	5.07	324.46	3,390.1	1,167.92	185.2	-132.3	-185.9	0.00	0.00	0.00
3,500.0	5.07	324.46	3,489.7	1,068.31	192.4	-137.4	-193.1	0.00	0.00	0.00
3,600.0	5.07	324.46	3,589.3	968.70	199.6	-142.6	-200.3	0.00	0.00	0.00
3,700.0	5.07	324.46	3,688.9	869.09	206.8	-147.7	-207.5	0.00	0.00	0.00
3,800.0	5.07	324.46	3,788.5	769.49	214.0	-152.8	-214.7	0.00	0.00	0.00
3,900.0	5.07	324.46	3,888.1	669.88	221.2	-158.0	-222.0	0.00	0.00	0.00
4,000.0	5.07	324.46	3,987.7	570.27	228.4	-163.1	-229.2	0.00	0.00	0.00
4,100.0	5.07	324.46	4,087.3	470.66	235.6	-168.3	-236.4	0.00	0.00	0.00
4,200.0	5.07	324.46	4,186.9	371.05	242.8	-173.4	-243.6	0.00	0.00	0.00
4,300.0	5.07	324.46	4,286.6	271.45	250.0	-178.5	-250.9	0.00	0.00	0.00
4,400.0	5.07	324.46	4,386.2	171.84	257.2	-183.7	-258.1	0.00	0.00	0.00
4,500.0	5.07	324.46	4,485.8	72.23	264.4	-188.8	-265.3	0.00	0.00	0.00
4,600.0	5.07	324.46	4,585.4	-27.38	271.6	-194.0	-272.5	0.00	0.00	0.00
4,700.0	5.07	324.46	4,685.0	-126.99	278.8	-199.1	-279.7	0.00	0.00	0.00
4,800.0	5.07	324.46	4,784.6	-226.59	286.0	-204.2	-287.0	0.00	0.00	0.00
4,900.0	5.07	324.46	4,884.2	-326.20	293.2	-209.4	-294.2	0.00	0.00	0.00

Planning Report



Database:	EDM 5000.1 Single User Db	Local Co-ordinate Reference:	Well STATE SEVENTY HOLES P41-T44-6HNB
Company:	BONANZA CREEK ENERGY INC.	TVD Reference:	KB-EST @ 4558.0usft (Original Well Elev)
Project:	WELD COUNTY, COLORADO (NAD 83)	MD Reference:	KB-EST @ 4558.0usft (Original Well Elev)
Site:	NE NE SEC. 6 T4N R62W 6th P.M.	North Reference:	True
Well:	STATE SEVENTY HOLES P41-T44-6HNB	Survey Calculation Method:	Minimum Curvature
Wellbore:	ORIGINAL WELLBORE		
Design:	PROPOSAL #1		

Planned Survey

MD (usft)	Inc (°)	Azi (°)	TVD (usft)	SS (usft)	+N/-S (usft)	+E/-W (usft)	Vertical Section (usft)	Dogleg Rate (°/100usft)	Build Rate (°/100usft)	Turn Rate (°/100usft)
5,000.0	5.07	324.46	4,983.8	-425.81	300.4	-214.5	-301.4	0.00	0.00	0.00
5,100.0	5.07	324.46	5,083.4	-525.42	307.6	-219.7	-308.6	0.00	0.00	0.00
5,200.0	5.07	324.46	5,183.0	-625.03	314.8	-224.8	-315.9	0.00	0.00	0.00
5,300.0	5.07	324.46	5,282.6	-724.64	322.0	-230.0	-323.1	0.00	0.00	0.00
5,400.0	5.07	324.46	5,382.2	-824.24	329.2	-235.1	-330.3	0.00	0.00	0.00
END OF TANGENT										
5,479.4	5.07	324.46	5,461.3	-903.32	334.9	-239.2	-336.0	0.00	0.00	0.00
5,500.0	4.66	324.46	5,481.9	-923.86	336.3	-240.2	-337.5	2.00	-2.00	0.00
5,600.0	2.66	324.46	5,581.6	-1,023.65	341.5	-243.9	-342.7	2.00	-2.00	0.00
5,700.0	0.66	324.46	5,681.6	-1,123.60	343.8	-245.6	-345.0	2.00	-2.00	0.00
EOD TO VERTICAL										
5,733.1	0.00	0.00	5,714.7	-1,156.70	344.0	-245.7	-345.2	2.00	-2.00	0.00
KOP (12°/100ft BUR)										
5,763.1	0.00	0.00	5,744.7	-1,186.70	344.0	-245.7	-345.2	0.00	0.00	0.00
5,800.0	4.43	176.86	5,781.6	-1,223.56	342.6	-245.6	-343.8	12.00	12.00	0.00
5,900.0	16.43	176.86	5,879.7	-1,321.73	324.5	-244.6	-325.7	12.00	12.00	0.00
6,000.0	28.43	176.86	5,972.0	-1,414.00	286.5	-242.5	-287.7	12.00	12.00	0.00
6,100.0	40.43	176.86	6,054.3	-1,496.33	230.2	-239.5	-231.3	12.00	12.00	0.00
6,200.0	52.43	176.86	6,123.1	-1,565.13	158.0	-235.5	-159.1	12.00	12.00	0.00
6,300.0	64.43	176.86	6,175.4	-1,617.39	73.0	-230.8	-74.2	12.00	12.00	0.00
START OF TANGENT										
6,388.1	75.00	176.86	6,205.9	-1,647.90	-9.4	-226.3	8.2	12.00	12.00	0.00
6,400.0	75.00	176.86	6,209.0	-1,650.98	-20.8	-225.7	19.7	0.00	0.00	0.00
END OF TANGENT										
6,488.1	75.00	176.86	6,231.8	-1,673.78	-105.8	-221.0	104.7	0.00	0.00	0.00
6,500.0	76.43	176.86	6,234.7	-1,676.71	-117.3	-220.4	116.2	12.00	12.00	0.00
6,600.0	88.43	176.86	6,247.9	-1,689.87	-216.1	-215.0	215.1	12.00	12.00	0.00
7" ICP *NEW* - STATE SEVENTY HOLES P41-T44-6HNB										
6,613.1	90.00	176.86	6,248.0	-1,690.05	-229.2	-214.3	228.1	12.00	12.00	0.00
6,700.0	90.00	176.86	6,248.0	-1,690.05	-316.0	-209.5	314.9	0.00	0.00	0.00
6,800.0	90.00	176.86	6,248.0	-1,690.05	-415.8	-204.0	414.8	0.00	0.00	0.00
6,900.0	90.00	176.86	6,248.0	-1,690.05	-515.7	-198.5	514.7	0.00	0.00	0.00
7,000.0	90.00	176.86	6,248.0	-1,690.05	-615.5	-193.1	614.6	0.00	0.00	0.00
7,100.0	90.00	176.86	6,248.0	-1,690.05	-715.4	-187.6	714.4	0.00	0.00	0.00
7,200.0	90.00	176.86	6,248.0	-1,690.05	-815.2	-182.1	814.3	0.00	0.00	0.00
7,300.0	90.00	176.86	6,248.0	-1,690.05	-915.1	-176.6	914.2	0.00	0.00	0.00
7,400.0	90.00	176.86	6,248.0	-1,690.05	-1,014.9	-171.1	1,014.1	0.00	0.00	0.00
7,500.0	90.00	176.86	6,248.0	-1,690.04	-1,114.8	-165.7	1,113.9	0.00	0.00	0.00
7,600.0	90.00	176.86	6,248.0	-1,690.04	-1,214.6	-160.2	1,213.8	0.00	0.00	0.00
7,700.0	90.00	176.86	6,248.0	-1,690.04	-1,314.5	-154.7	1,313.7	0.00	0.00	0.00
7,800.0	90.00	176.86	6,248.0	-1,690.04	-1,414.3	-149.2	1,413.6	0.00	0.00	0.00
7,900.0	90.00	176.86	6,248.0	-1,690.04	-1,514.2	-143.7	1,513.4	0.00	0.00	0.00
8,000.0	90.00	176.86	6,248.0	-1,690.04	-1,614.0	-138.3	1,613.3	0.00	0.00	0.00
8,100.0	90.00	176.86	6,248.0	-1,690.04	-1,713.9	-132.8	1,713.2	0.00	0.00	0.00
8,200.0	90.00	176.86	6,248.0	-1,690.04	-1,813.7	-127.3	1,813.1	0.00	0.00	0.00
8,300.0	90.00	176.86	6,248.0	-1,690.04	-1,913.6	-121.8	1,912.9	0.00	0.00	0.00
8,400.0	90.00	176.86	6,248.0	-1,690.04	-2,013.4	-116.3	2,012.8	0.00	0.00	0.00
8,500.0	90.00	176.86	6,248.0	-1,690.04	-2,113.3	-110.8	2,112.7	0.00	0.00	0.00
8,600.0	90.00	176.86	6,248.0	-1,690.04	-2,213.1	-105.4	2,212.6	0.00	0.00	0.00
8,700.0	90.00	176.86	6,248.0	-1,690.04	-2,313.0	-99.9	2,312.4	0.00	0.00	0.00
8,800.0	90.00	176.86	6,248.0	-1,690.03	-2,412.8	-94.4	2,412.3	0.00	0.00	0.00
8,900.0	90.00	176.86	6,248.0	-1,690.03	-2,512.7	-88.9	2,512.2	0.00	0.00	0.00

Planning Report



Database:	EDM 5000.1 Single User Db	Local Co-ordinate Reference:	Well STATE SEVENTY HOLES P41-T44-6HNB
Company:	BONANZA CREEK ENERGY INC.	TVD Reference:	KB-EST @ 4558.0usft (Original Well Elev)
Project:	WELD COUNTY, COLORADO (NAD 83)	MD Reference:	KB-EST @ 4558.0usft (Original Well Elev)
Site:	NE NE SEC. 6 T4N R62W 6th P.M.	North Reference:	True
Well:	STATE SEVENTY HOLES P41-T44-6HNB	Survey Calculation Method:	Minimum Curvature
Wellbore:	ORIGINAL WELLBORE		
Design:	PROPOSAL #1		

Planned Survey

MD (usft)	Inc (°)	Azi (°)	TVD (usft)	SS (usft)	+N/-S (usft)	+E/-W (usft)	Vertical Section (usft)	Dogleg Rate (°/100usft)	Build Rate (°/100usft)	Turn Rate (°/100usft)
9,000.0	90.00	176.86	6,248.0	-1,690.03	-2,612.5	-83.4	2,612.1	0.00	0.00	0.00
9,100.0	90.00	176.86	6,248.0	-1,690.03	-2,712.4	-77.9	2,711.9	0.00	0.00	0.00
9,200.0	90.00	176.85	6,248.0	-1,690.03	-2,812.2	-72.4	2,811.8	0.00	0.00	0.00
9,300.0	90.00	176.85	6,248.0	-1,690.03	-2,912.1	-67.0	2,911.7	0.00	0.00	0.00
9,400.0	90.00	176.85	6,248.0	-1,690.03	-3,011.9	-61.5	3,011.6	0.00	0.00	0.00
9,500.0	90.00	176.85	6,248.0	-1,690.03	-3,111.8	-56.0	3,111.4	0.00	0.00	0.00
9,600.0	90.00	176.85	6,248.0	-1,690.02	-3,211.6	-50.5	3,211.3	0.00	0.00	0.00
9,700.0	90.00	176.85	6,248.0	-1,690.02	-3,311.5	-45.0	3,311.2	0.00	0.00	0.00
9,800.0	90.00	176.85	6,248.0	-1,690.02	-3,411.3	-39.5	3,411.1	0.00	0.00	0.00
9,900.0	90.00	176.85	6,248.0	-1,690.02	-3,511.2	-34.0	3,510.9	0.00	0.00	0.00
10,000.0	90.00	176.85	6,248.0	-1,690.02	-3,611.0	-28.5	3,610.8	0.00	0.00	0.00
10,100.0	90.00	176.85	6,248.0	-1,690.02	-3,710.8	-23.1	3,710.7	0.00	0.00	0.00
10,200.0	90.00	176.85	6,248.0	-1,690.01	-3,810.7	-17.6	3,810.6	0.00	0.00	0.00
10,300.0	90.00	176.85	6,248.0	-1,690.01	-3,910.5	-12.1	3,910.4	0.00	0.00	0.00
10,400.0	90.00	176.85	6,248.0	-1,690.01	-4,010.4	-6.6	4,010.3	0.00	0.00	0.00
10,500.0	90.00	176.85	6,248.0	-1,690.01	-4,110.2	-1.1	4,110.2	0.00	0.00	0.00
10,600.0	90.00	176.85	6,248.0	-1,690.01	-4,210.1	4.4	4,210.1	0.00	0.00	0.00
10,700.0	90.00	176.85	6,248.0	-1,690.00	-4,309.9	9.9	4,309.9	0.00	0.00	0.00
10,800.0	90.00	176.85	6,248.0	-1,690.00	-4,409.8	15.4	4,409.8	0.00	0.00	0.00
10,900.0	90.00	176.85	6,248.0	-1,690.00	-4,509.6	20.9	4,509.7	0.00	0.00	0.00
BHL - STATE SEVENTY HOLES P41-T44-6HNB										
10,926.0	90.00	176.85	6,248.0	-1,690.00	-4,535.6	22.3	4,535.7	0.00	0.00	0.00

Plan Annotations

MD (usft)	TVD (usft)	Local Coordinates		Comment
		+N/-S (usft)	+E/-W (usft)	
700.0	700.0	0.0	0.0	START NUDGE (2°/100ft BUR)
953.7	953.4	9.1	-6.5	EOB TO 5.07° INC
5,479.4	5,461.3	334.9	-239.2	END OF TANGENT
5,733.1	5,714.7	344.0	-245.7	EOD TO VERTICAL
5,763.1	5,744.7	344.0	-245.7	KOP (12°/100ft BUR)
6,388.1	6,205.9	-9.4	-226.3	START OF TANGENT
6,488.1	6,231.8	-105.8	-221.0	END OF TANGENT
6,613.1	6,248.0	-229.2	-214.3	7" ICP *NEW* - STATE SEVENTY HOLES P41-T44-6HNB
10,926.0	6,248.0	-4,535.6	22.3	BHL - STATE SEVENTY HOLES P41-T44-6HNB