

# **BONANZA CREEK ENERGY INC.**

**WELD COUNTY, COLORADO (NAD 83)**

**NE NE SEC. 6 T4N R62W 6th P.M.**

**STATE SEVENTY HOLES U41-Y44-6HNB**

**ORIGINAL WELLBORE**

**21 December, 2014**

**Plan: PROPOSAL #1**





Project: WELD COUNTY, COLORADO (NAD 83)  
Site: NE NE SEC. 6 T4N R62W 6th P.M.  
Well: STATE SEVENTY HOLES U41-Y44-6HNB  
Wellbore: ORIGINAL WELLBORE  
Design: PROPOSAL #1

ANNOTATIONS									
TVD	MD	Inc	Azi	+N/-S	+E/-W	VSect	Dep	Annotation	
900.0	900.0	0.00	0.00	0.0	0.0	0.0	0.0	START NUDGE (2°/100ft BUR)	
1224.3	1225.0	6.50	40.14	14.1	11.9	-12.3	18.4	EOB TO 6.5° INC	
5392.4	5420.1	6.50	40.14	377.1	318.0	-330.7	493.3	END OF TANGENT	
5716.7	5745.1	0.00	0.00	391.2	329.9	-343.1	511.7	EOD TO VERTICAL	
5746.7	5775.1	0.00	0.00	391.2	329.9	-343.1	511.7	KOP (12°/100ft BUR)	
6207.9	6400.1	75.00	176.70	37.9	350.3	9.7	865.6	START OF TANGENT	
6233.8	6500.1	75.00	176.70	-58.5	355.8	106.0	962.2	END OF TANGENT	
6250.0	6625.1	90.00	176.70	-181.9	362.9	229.2	1085.8	7" ICP *NEW* - STATE SEVENTY HOLES U41-Y44-6HNB	
6250.0	10931.2	90.00	176.71	-4481.0	610.5	4522.4	5392.0	BHL - STATE SEVENTY HOLES U41-Y44-6HNB	

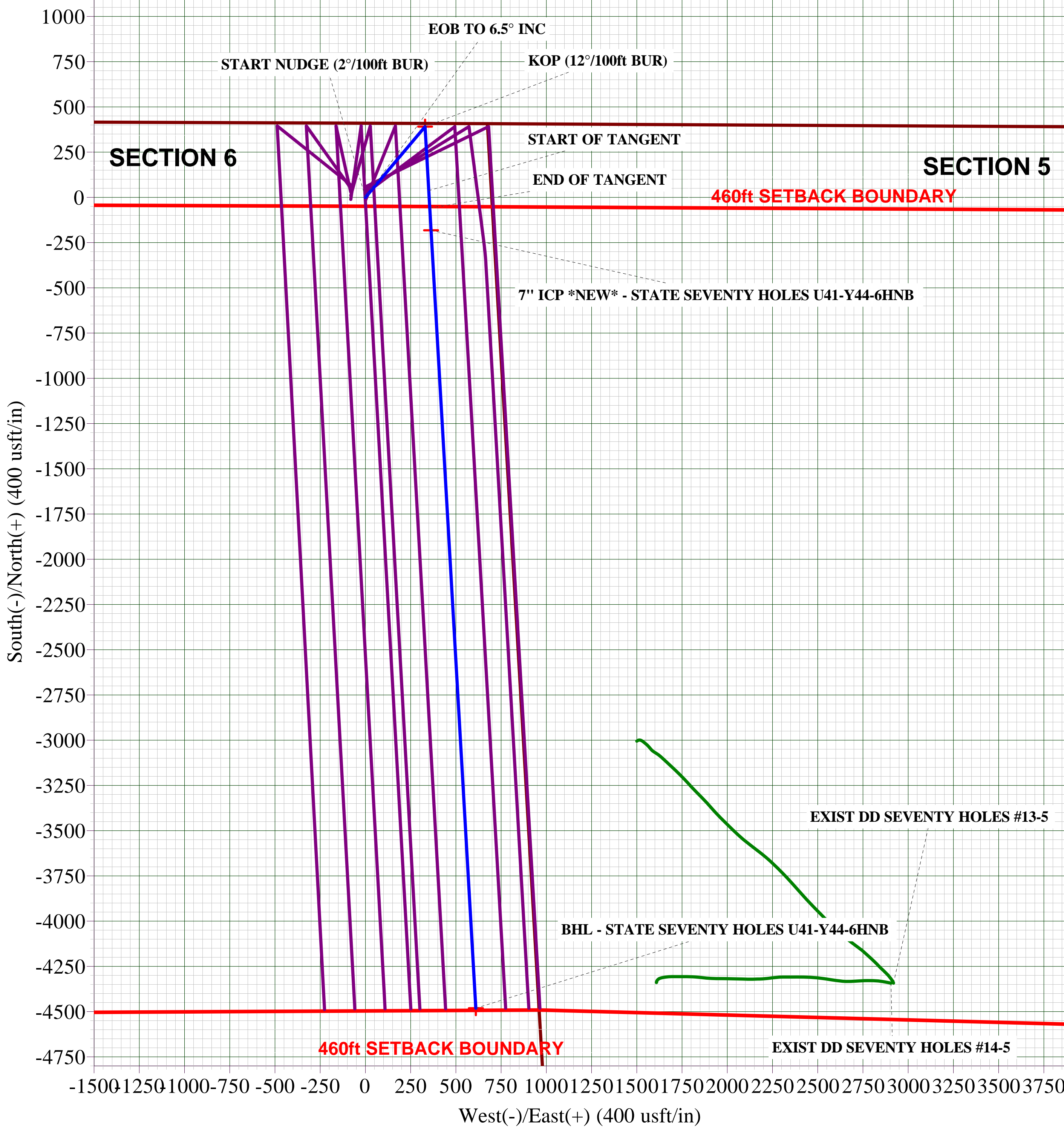
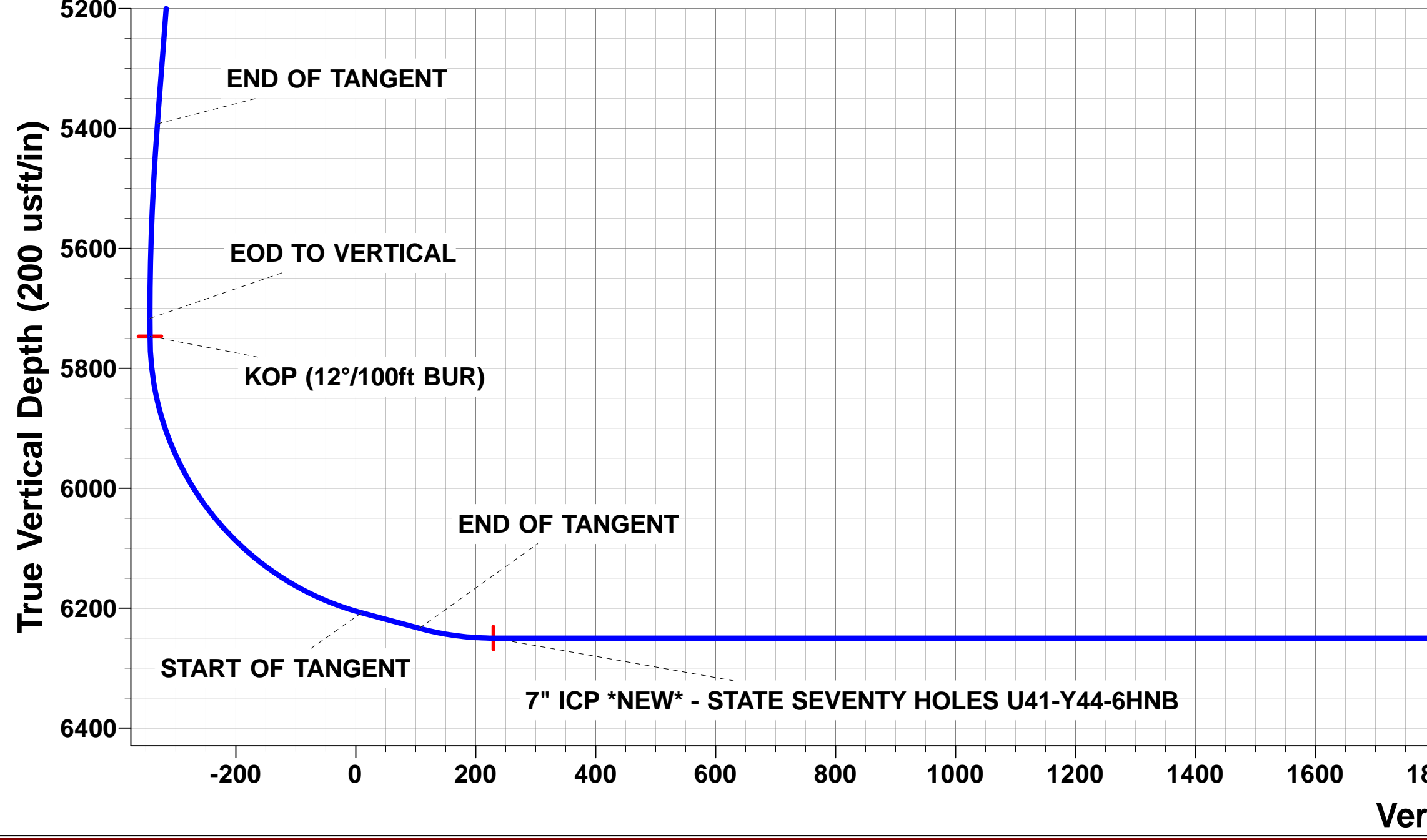
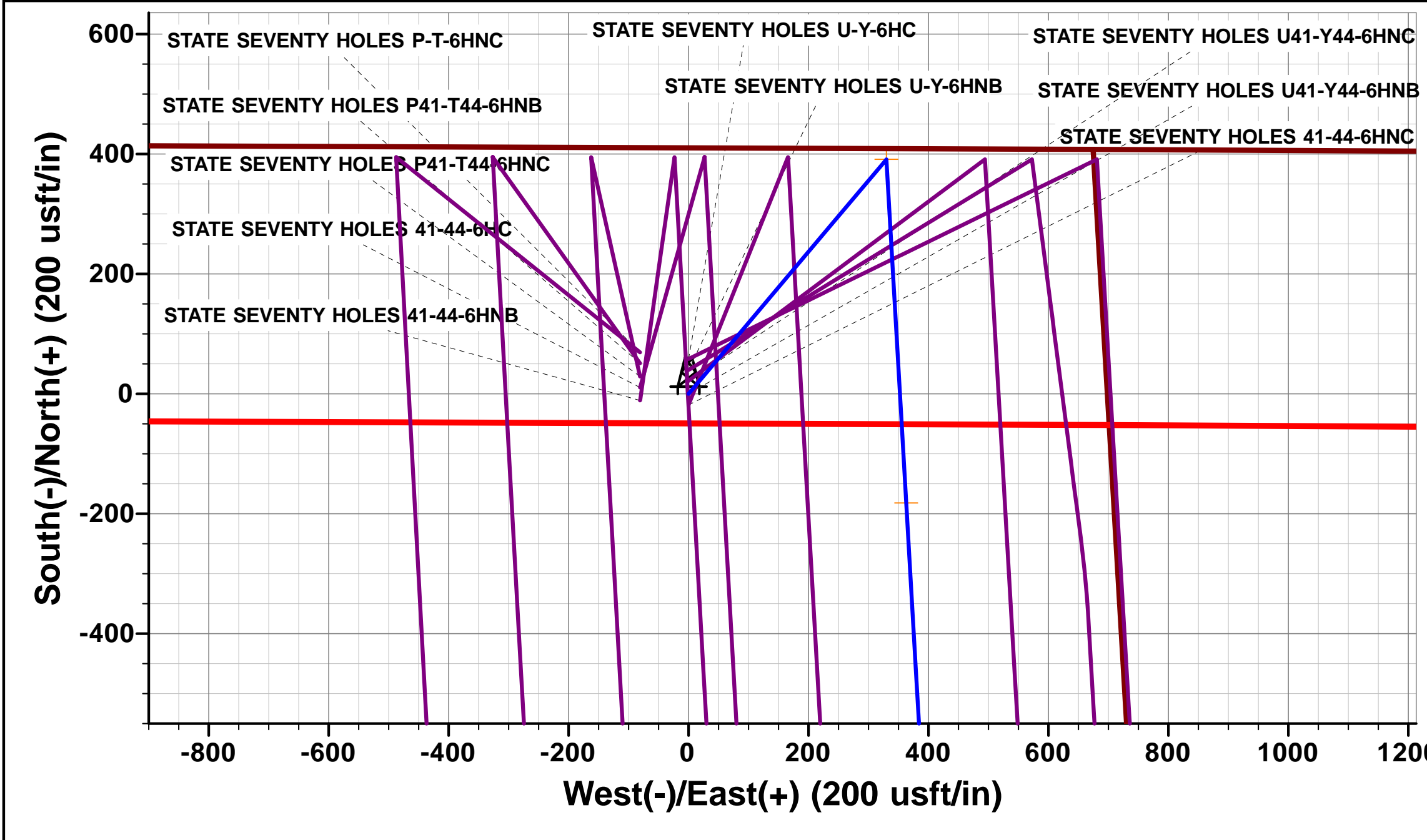
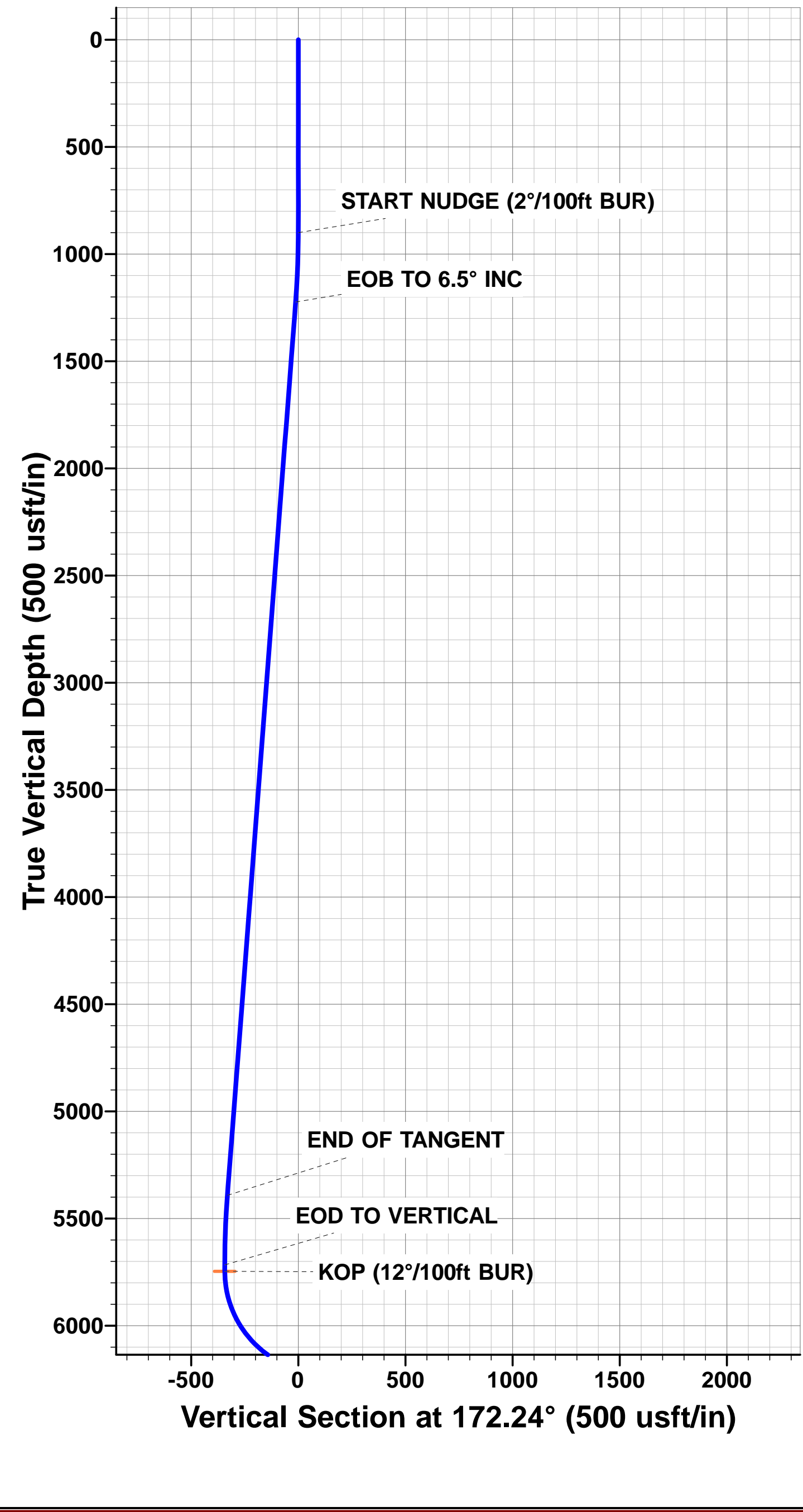
PROPOSED LOCAL COORDINATES:

SHL: 410ft FNL & 699ft FEL Sec 6

7" ICP \*NEW\*: 589ft FNL & 346ft FEL Sec 6

BHL: 470ft FSL & 351ft FEL Sec 6

WELLBORE TARGET DETAILS (LAT/LONG)					
Name	TVD	+N/-S	+E/-W	Latitude	Longitude
KOP - STATE SEVENTY HOLES U41-Y44-6HNB	5746.7	391.2	329.9	40.348994	-104.361196
7" ICP *NEW* - STATE SEVENTY HOLES U41-Y44-6HNB	6250.0	-181.9	362.9	40.347421	-104.361078
BHL - STATE SEVENTY HOLES U41-Y44-6HNB	6250.0	-4481.0	610.5	40.335620	-104.360190



# Planning Report



<b>Database:</b>	EDM 5000.1 Single User Db	<b>Local Co-ordinate Reference:</b>	Well STATE SEVENTY HOLES U41-Y44-6HNB
<b>Company:</b>	BONANZA CREEK ENERGY INC.	<b>TVD Reference:</b>	KB-EST @ 4560.0usft (Original Well Elev)
<b>Project:</b>	WELD COUNTY, COLORADO (NAD 83)	<b>MD Reference:</b>	KB-EST @ 4560.0usft (Original Well Elev)
<b>Site:</b>	NE NE SEC. 6 T4N R62W 6th P.M.	<b>North Reference:</b>	True
<b>Well:</b>	STATE SEVENTY HOLES U41-Y44-6HNB	<b>Survey Calculation Method:</b>	Minimum Curvature
<b>Wellbore:</b>	ORIGINAL WELLBORE		
<b>Design:</b>	PROPOSAL #1		

<b>Project</b>	WELD COUNTY, COLORADO (NAD 83)		
<b>Map System:</b>	US State Plane 1983	<b>System Datum:</b>	Mean Sea Level
<b>Geo Datum:</b>	North American Datum 1983		
<b>Map Zone:</b>	Colorado Northern Zone		Using geodetic scale factor

Site	NE NE SEC. 6 T4N R62W 6th P.M.				
Site Position:		Northing:	1,371,680.11 usft	Latitude:	40.348080
From:	Lat/Long	Easting:	3,317,072.91 usft	Longitude:	-104.362380
Position Uncertainty:	0.0 usft	Slot Radius:	1.10000ft	Grid Convergence:	0.74 °

Well	STATE SEVENTY HOLES U41-Y44-6HNB					
Well Position	+N/-S	-58.3 usft	Northing:	1,371,621.82 usft	Latitude:	40.347920
	+E/-W	0.0 usft	Easting:	3,317,073.65 usft	Longitude:	-104.362380
Position Uncertainty		0.0 usft	Wellhead Elevation:	usft	Ground Level:	4,543.0 usft

<b>Wellbore</b>	ORIGINAL WELLBORE				
<b>Magnetics</b>	<b>Model Name</b>	<b>Sample Date</b>	<b>Declination (°)</b>	<b>Dip Angle (°)</b>	<b>Field Strength (nT)</b>
	IGRF2010	21/12/2014	8.17	66.95	52,777

<b>Design</b>	PROPOSAL #1				
<b>Audit Notes:</b>					
<b>Version:</b>	<b>Phase:</b>	PROTOTYPE	<b>Tie On Depth:</b>	0.0	
<b>Vertical Section:</b>	<b>Depth From (TVD) (usft)</b>	<b>+N/-S (usft)</b>	<b>+E/-W (usft)</b>	<b>Direction (°)</b>	
	6,250.0	0.0	0.0	172.24	

<b>Plan Sections</b>											
MD (usft)	Inc (°)	Azi (°)	Vertical Depth	SS (usft)	+N/-S (usft)	+E/-W (usft)	Dogleg Rate (°/100usft)	Build Rate (°/100usft)	Turn Rate (°/100usft)	TFO (°)	Target
0.0	0.00	0.00	0.0	-4,560.0	0.0	0.0	0.00	0.00	0.00	0.00	
900.0	0.00	0.00	900.0	-3,660.0	0.0	0.0	0.00	0.00	0.00	0.00	
1,225.0	6.50	40.14	1,224.3	-3,335.7	14.1	11.9	2.00	2.00	0.00	40.14	
5,420.1	6.50	40.14	5,392.4	832.4	377.1	318.0	0.00	0.00	0.00	0.00	
5,745.1	0.00	0.00	5,716.7	1,156.7	391.2	329.9	2.00	-2.00	0.00	180.00	
5,775.1	0.00	0.00	5,746.7	1,186.7	391.2	329.9	0.00	0.00	0.00	0.00	KOP - STATE SEVI
6,400.1	75.00	176.70	6,207.9	1,647.9	37.9	350.3	12.00	12.00	0.00	176.70	
6,500.1	75.00	176.70	6,233.8	1,673.8	-58.5	355.8	0.00	0.00	0.00	0.00	
6,625.1	90.00	176.70	6,250.0	1,690.0	-181.9	362.9	12.00	12.00	0.00	0.00	
10,931.2	90.00	176.71	6,250.0	1,690.0	-4,481.0	610.5	0.00	0.00	0.00	80.67	BHL - STATE SEVE

# Planning Report



<b>Database:</b>	EDM 5000.1 Single User Db	<b>Local Co-ordinate Reference:</b>	Well STATE SEVENTY HOLES U41-Y44-6HNB
<b>Company:</b>	BONANZA CREEK ENERGY INC.	<b>TVD Reference:</b>	KB-EST @ 4560.0usft (Original Well Elev)
<b>Project:</b>	WELD COUNTY, COLORADO (NAD 83)	<b>MD Reference:</b>	KB-EST @ 4560.0usft (Original Well Elev)
<b>Site:</b>	NE NE SEC. 6 T4N R62W 6th P.M.	<b>North Reference:</b>	True
<b>Well:</b>	STATE SEVENTY HOLES U41-Y44-6HNB	<b>Survey Calculation Method:</b>	Minimum Curvature
<b>Wellbore:</b>	ORIGINAL WELLBORE		
<b>Design:</b>	PROPOSAL #1		

## Planned Survey

MD (usft)	Inc (°)	Azi (°)	TVD (usft)	SS (usft)	+N/-S (usft)	+E/-W (usft)	Vertical Section (usft)	Dogleg Rate (°/100usft)	Build Rate (°/100usft)	Turn Rate (°/100usft)
0.0	0.00	0.00	0.0	4,560.00	0.0	0.0	0.0	0.00	0.00	0.00
100.0	0.00	0.00	100.0	4,460.00	0.0	0.0	0.0	0.00	0.00	0.00
200.0	0.00	0.00	200.0	4,360.00	0.0	0.0	0.0	0.00	0.00	0.00
300.0	0.00	0.00	300.0	4,260.00	0.0	0.0	0.0	0.00	0.00	0.00
400.0	0.00	0.00	400.0	4,160.00	0.0	0.0	0.0	0.00	0.00	0.00
500.0	0.00	0.00	500.0	4,060.00	0.0	0.0	0.0	0.00	0.00	0.00
600.0	0.00	0.00	600.0	3,960.00	0.0	0.0	0.0	0.00	0.00	0.00
700.0	0.00	0.00	700.0	3,860.00	0.0	0.0	0.0	0.00	0.00	0.00
800.0	0.00	0.00	800.0	3,760.00	0.0	0.0	0.0	0.00	0.00	0.00
<b>START NUDGE (2°/100ft BUR)</b>										
900.0	0.00	0.00	900.0	3,660.00	0.0	0.0	0.0	0.00	0.00	0.00
1,000.0	2.00	40.14	1,000.0	3,560.02	1.3	1.1	-1.2	2.00	2.00	0.00
1,100.0	4.00	40.14	1,099.8	3,460.16	5.3	4.5	-4.7	2.00	2.00	0.00
1,200.0	6.00	40.14	1,199.5	3,360.55	12.0	10.1	-10.5	2.00	2.00	0.00
<b>EOB TO 6.5° INC</b>										
1,225.0	6.50	40.14	1,224.3	3,335.69	14.1	11.9	-12.3	2.00	2.00	0.00
1,300.0	6.50	40.14	1,298.8	3,261.18	20.6	17.3	-18.0	0.00	0.00	0.00
1,400.0	6.50	40.14	1,398.2	3,161.82	29.2	24.6	-25.6	0.00	0.00	0.00
1,500.0	6.50	40.14	1,497.5	3,062.46	37.9	31.9	-33.2	0.00	0.00	0.00
1,600.0	6.50	40.14	1,596.9	2,963.11	46.5	39.2	-40.8	0.00	0.00	0.00
1,700.0	6.50	40.14	1,696.2	2,863.75	55.2	46.5	-48.4	0.00	0.00	0.00
1,800.0	6.50	40.14	1,795.6	2,764.39	63.8	53.8	-56.0	0.00	0.00	0.00
1,900.0	6.50	40.14	1,895.0	2,665.04	72.5	61.1	-63.6	0.00	0.00	0.00
2,000.0	6.50	40.14	1,994.3	2,565.68	81.1	68.4	-71.2	0.00	0.00	0.00
2,100.0	6.50	40.14	2,093.7	2,466.32	89.8	75.7	-78.8	0.00	0.00	0.00
2,200.0	6.50	40.14	2,193.0	2,366.96	98.5	83.0	-86.3	0.00	0.00	0.00
2,300.0	6.50	40.14	2,292.4	2,267.61	107.1	90.3	-93.9	0.00	0.00	0.00
2,400.0	6.50	40.14	2,391.7	2,168.25	115.8	97.6	-101.5	0.00	0.00	0.00
2,500.0	6.50	40.14	2,491.1	2,068.89	124.4	104.9	-109.1	0.00	0.00	0.00
2,600.0	6.50	40.14	2,590.5	1,969.54	133.1	112.2	-116.7	0.00	0.00	0.00
2,700.0	6.50	40.14	2,689.8	1,870.18	141.7	119.5	-124.3	0.00	0.00	0.00
2,800.0	6.50	40.14	2,789.2	1,770.82	150.4	126.8	-131.9	0.00	0.00	0.00
2,900.0	6.50	40.14	2,888.5	1,671.46	159.0	134.1	-139.5	0.00	0.00	0.00
3,000.0	6.50	40.14	2,987.9	1,572.11	167.7	141.4	-147.1	0.00	0.00	0.00
3,100.0	6.50	40.14	3,087.3	1,472.75	176.3	148.7	-154.7	0.00	0.00	0.00
3,200.0	6.50	40.14	3,186.6	1,373.39	185.0	156.0	-162.2	0.00	0.00	0.00
3,300.0	6.50	40.14	3,286.0	1,274.04	193.7	163.3	-169.8	0.00	0.00	0.00
3,400.0	6.50	40.14	3,385.3	1,174.68	202.3	170.6	-177.4	0.00	0.00	0.00
3,500.0	6.50	40.14	3,484.7	1,075.32	211.0	177.9	-185.0	0.00	0.00	0.00
3,600.0	6.50	40.14	3,584.0	975.96	219.6	185.2	-192.6	0.00	0.00	0.00
3,700.0	6.50	40.14	3,683.4	876.61	228.3	192.5	-200.2	0.00	0.00	0.00
3,800.0	6.50	40.14	3,782.8	777.25	236.9	199.8	-207.8	0.00	0.00	0.00
3,900.0	6.50	40.14	3,882.1	677.89	245.6	207.1	-215.4	0.00	0.00	0.00
4,000.0	6.50	40.14	3,981.5	578.54	254.2	214.4	-223.0	0.00	0.00	0.00
4,100.0	6.50	40.14	4,080.8	479.18	262.9	221.7	-230.5	0.00	0.00	0.00
4,200.0	6.50	40.14	4,180.2	379.82	271.5	229.0	-238.1	0.00	0.00	0.00
4,300.0	6.50	40.14	4,279.5	280.46	280.2	236.3	-245.7	0.00	0.00	0.00
4,400.0	6.50	40.14	4,378.9	181.11	288.8	243.6	-253.3	0.00	0.00	0.00
4,500.0	6.50	40.14	4,478.3	81.75	297.5	250.9	-260.9	0.00	0.00	0.00
4,600.0	6.50	40.14	4,577.6	-17.61	306.2	258.2	-268.5	0.00	0.00	0.00
4,700.0	6.50	40.14	4,677.0	-116.96	314.8	265.5	-276.1	0.00	0.00	0.00
4,800.0	6.50	40.14	4,776.3	-216.32	323.5	272.8	-283.7	0.00	0.00	0.00
4,900.0	6.50	40.14	4,875.7	-315.68	332.1	280.1	-291.3	0.00	0.00	0.00

# Planning Report



<b>Database:</b>	EDM 5000.1 Single User Db	<b>Local Co-ordinate Reference:</b>	Well STATE SEVENTY HOLES U41-Y44-6HNB
<b>Company:</b>	BONANZA CREEK ENERGY INC.	<b>TVD Reference:</b>	KB-EST @ 4560.0usft (Original Well Elev)
<b>Project:</b>	WELD COUNTY, COLORADO (NAD 83)	<b>MD Reference:</b>	KB-EST @ 4560.0usft (Original Well Elev)
<b>Site:</b>	NE NE SEC. 6 T4N R62W 6th P.M.	<b>North Reference:</b>	True
<b>Well:</b>	STATE SEVENTY HOLES U41-Y44-6HNB	<b>Survey Calculation Method:</b>	Minimum Curvature
<b>Wellbore:</b>	ORIGINAL WELLBORE		
<b>Design:</b>	PROPOSAL #1		

## Planned Survey

MD (usft)	Inc (°)	Azi (°)	TVD (usft)	SS (usft)	+N/-S (usft)	+E/-W (usft)	Vertical Section (usft)	Dogleg Rate (°/100usft)	Build Rate (°/100usft)	Turn Rate (°/100usft)
5,000.0	6.50	40.14	4,975.0	-415.04	340.8	287.4	-298.9	0.00	0.00	0.00
5,100.0	6.50	40.14	5,074.4	-514.39	349.4	294.7	-306.4	0.00	0.00	0.00
5,200.0	6.50	40.14	5,173.8	-613.75	358.1	302.0	-314.0	0.00	0.00	0.00
5,300.0	6.50	40.14	5,273.1	-713.11	366.7	309.3	-321.6	0.00	0.00	0.00
5,400.0	6.50	40.14	5,372.5	-812.46	375.4	316.6	-329.2	0.00	0.00	0.00
<b>END OF TANGENT</b>										
5,420.1	6.50	40.14	5,392.4	-832.39	377.1	318.0	-330.7	0.00	0.00	0.00
5,500.0	4.90	40.14	5,471.9	-911.94	383.2	323.1	-336.1	2.00	-2.00	0.00
5,600.0	2.90	40.14	5,571.7	-1,011.70	388.4	327.5	-340.6	2.00	-2.00	0.00
5,700.0	0.90	40.14	5,671.6	-1,111.64	390.9	329.7	-342.8	2.00	-2.00	0.00
<b>EOD TO VERTICAL</b>										
5,745.1	0.00	0.00	5,716.7	-1,156.70	391.2	329.9	-343.1	2.00	-2.00	0.00
<b>KOP (12°/100ft BUR)</b>										
5,775.1	0.00	0.00	5,746.7	-1,186.70	391.2	329.9	-343.1	0.00	0.00	0.00
5,800.0	2.99	176.70	5,771.6	-1,211.63	390.5	329.9	-342.4	12.00	12.00	0.00
5,900.0	14.99	176.70	5,870.2	-1,310.22	375.0	330.8	-326.9	12.00	12.00	0.00
6,000.0	26.99	176.70	5,963.4	-1,403.41	339.3	332.9	-291.2	12.00	12.00	0.00
6,100.0	38.99	176.70	6,047.1	-1,487.13	285.0	336.0	-237.0	12.00	12.00	0.00
6,200.0	50.99	176.70	6,117.7	-1,557.72	214.6	340.1	-166.7	12.00	12.00	0.00
6,300.0	62.99	176.70	6,172.1	-1,612.10	131.0	344.9	-83.2	12.00	12.00	0.00
6,400.0	74.99	176.70	6,207.9	-1,647.88	38.0	350.3	9.7	12.00	12.00	0.00
<b>START OF TANGENT</b>										
6,400.1	75.00	176.70	6,207.9	-1,647.90	37.9	350.3	9.7	12.00	12.00	0.00
6,500.0	75.00	176.70	6,233.8	-1,673.76	-58.5	355.8	106.0	0.00	0.00	0.00
<b>END OF TANGENT</b>										
6,500.1	75.00	176.70	6,233.8	-1,673.78	-58.5	355.8	106.0	0.00	0.00	0.00
6,600.0	86.99	176.70	6,249.4	-1,689.39	-156.9	361.5	204.3	12.00	12.00	0.00
<b>7" ICP *NEW* - STATE SEVENTY HOLES U41-Y44-6HNB</b>										
6,625.1	90.00	176.70	6,250.0	-1,690.05	-181.9	362.9	229.2	12.00	12.00	0.00
6,700.0	90.00	176.70	6,250.0	-1,690.05	-256.7	367.3	304.0	0.00	0.00	0.00
6,800.0	90.00	176.70	6,250.0	-1,690.05	-356.6	373.0	403.6	0.00	0.00	0.00
6,900.0	90.00	176.70	6,250.0	-1,690.05	-456.4	378.8	503.3	0.00	0.00	0.00
7,000.0	90.00	176.70	6,250.0	-1,690.05	-556.2	384.5	603.0	0.00	0.00	0.00
7,100.0	90.00	176.70	6,250.0	-1,690.05	-656.1	390.3	702.7	0.00	0.00	0.00
7,200.0	90.00	176.70	6,250.0	-1,690.05	-755.9	396.0	802.4	0.00	0.00	0.00
7,300.0	90.00	176.70	6,250.0	-1,690.05	-855.7	401.8	902.1	0.00	0.00	0.00
7,400.0	90.00	176.70	6,250.0	-1,690.05	-955.6	407.5	1,001.8	0.00	0.00	0.00
7,500.0	90.00	176.70	6,250.0	-1,690.04	-1,055.4	413.3	1,101.5	0.00	0.00	0.00
7,600.0	90.00	176.70	6,250.0	-1,690.04	-1,155.2	419.1	1,201.2	0.00	0.00	0.00
7,700.0	90.00	176.70	6,250.0	-1,690.04	-1,255.1	424.8	1,300.9	0.00	0.00	0.00
7,800.0	90.00	176.70	6,250.0	-1,690.04	-1,354.9	430.6	1,400.6	0.00	0.00	0.00
7,900.0	90.00	176.70	6,250.0	-1,690.04	-1,454.7	436.3	1,500.3	0.00	0.00	0.00
8,000.0	90.00	176.70	6,250.0	-1,690.04	-1,554.6	442.1	1,600.0	0.00	0.00	0.00
8,100.0	90.00	176.70	6,250.0	-1,690.04	-1,654.4	447.8	1,699.7	0.00	0.00	0.00
8,200.0	90.00	176.70	6,250.0	-1,690.04	-1,754.2	453.6	1,799.4	0.00	0.00	0.00
8,300.0	90.00	176.70	6,250.0	-1,690.04	-1,854.1	459.3	1,899.1	0.00	0.00	0.00
8,400.0	90.00	176.70	6,250.0	-1,690.04	-1,953.9	465.1	1,998.8	0.00	0.00	0.00
8,500.0	90.00	176.70	6,250.0	-1,690.04	-2,053.7	470.8	2,098.5	0.00	0.00	0.00
8,600.0	90.00	176.70	6,250.0	-1,690.04	-2,153.6	476.6	2,198.2	0.00	0.00	0.00
8,700.0	90.00	176.70	6,250.0	-1,690.04	-2,253.4	482.3	2,297.9	0.00	0.00	0.00
8,800.0	90.00	176.70	6,250.0	-1,690.03	-2,353.2	488.1	2,397.6	0.00	0.00	0.00
8,900.0	90.00	176.70	6,250.0	-1,690.03	-2,453.1	493.8	2,497.3	0.00	0.00	0.00



# Planning Report



<b>Database:</b>	EDM 5000.1 Single User Db	<b>Local Co-ordinate Reference:</b>	Well STATE SEVENTY HOLES U41-Y44-6HNB
<b>Company:</b>	BONANZA CREEK ENERGY INC.	<b>TVD Reference:</b>	KB-EST @ 4560.0usft (Original Well Elev)
<b>Project:</b>	WELD COUNTY, COLORADO (NAD 83)	<b>MD Reference:</b>	KB-EST @ 4560.0usft (Original Well Elev)
<b>Site:</b>	NE NE SEC. 6 T4N R62W 6th P.M.	<b>North Reference:</b>	True
<b>Well:</b>	STATE SEVENTY HOLES U41-Y44-6HNB	<b>Survey Calculation Method:</b>	Minimum Curvature
<b>Wellbore:</b>	ORIGINAL WELLBORE		
<b>Design:</b>	PROPOSAL #1		

## Planned Survey

MD (usft)	Inc (°)	Azi (°)	TVD (usft)	SS (usft)	+N/-S (usft)	+E/-W (usft)	Vertical Section (usft)	Dogleg Rate (°/100usft)	Build Rate (°/100usft)	Turn Rate (°/100usft)
9,000.0	90.00	176.70	6,250.0	-1,690.03	-2,552.9	499.6	2,597.0	0.00	0.00	0.00
9,100.0	90.00	176.70	6,250.0	-1,690.03	-2,652.7	505.3	2,696.7	0.00	0.00	0.00
9,200.0	90.00	176.70	6,250.0	-1,690.03	-2,752.6	511.1	2,796.4	0.00	0.00	0.00
9,300.0	90.00	176.70	6,250.0	-1,690.03	-2,852.4	516.8	2,896.1	0.00	0.00	0.00
9,400.0	90.00	176.70	6,250.0	-1,690.03	-2,952.3	522.6	2,995.8	0.00	0.00	0.00
9,500.0	90.00	176.71	6,250.0	-1,690.03	-3,052.1	528.3	3,095.5	0.00	0.00	0.00
9,600.0	90.00	176.71	6,250.0	-1,690.02	-3,151.9	534.1	3,195.2	0.00	0.00	0.00
9,700.0	90.00	176.71	6,250.0	-1,690.02	-3,251.8	539.8	3,294.9	0.00	0.00	0.00
9,800.0	90.00	176.71	6,250.0	-1,690.02	-3,351.6	545.6	3,394.6	0.00	0.00	0.00
9,900.0	90.00	176.71	6,250.0	-1,690.02	-3,451.4	551.3	3,494.3	0.00	0.00	0.00
10,000.0	90.00	176.71	6,250.0	-1,690.02	-3,551.3	557.0	3,594.0	0.00	0.00	0.00
10,100.0	90.00	176.71	6,250.0	-1,690.02	-3,651.1	562.8	3,693.6	0.00	0.00	0.00
10,200.0	90.00	176.71	6,250.0	-1,690.01	-3,750.9	568.5	3,793.3	0.00	0.00	0.00
10,300.0	90.00	176.71	6,250.0	-1,690.01	-3,850.8	574.3	3,893.0	0.00	0.00	0.00
10,400.0	90.00	176.71	6,250.0	-1,690.01	-3,950.6	580.0	3,992.7	0.00	0.00	0.00
10,500.0	90.00	176.71	6,250.0	-1,690.01	-4,050.4	585.8	4,092.4	0.00	0.00	0.00
10,600.0	90.00	176.71	6,250.0	-1,690.01	-4,150.3	591.5	4,192.1	0.00	0.00	0.00
10,700.0	90.00	176.71	6,250.0	-1,690.00	-4,250.1	597.3	4,291.8	0.00	0.00	0.00
10,800.0	90.00	176.71	6,250.0	-1,690.00	-4,349.9	603.0	4,391.5	0.00	0.00	0.00
10,900.0	90.00	176.71	6,250.0	-1,690.00	-4,449.8	608.7	4,491.2	0.00	0.00	0.00
<b>BHL - STATE SEVENTY HOLES U41-Y44-6HNB</b>										
<b>10,931.2</b>	<b>90.00</b>	<b>176.71</b>	<b>6,250.0</b>	<b>-1,690.00</b>	<b>-4,481.0</b>	<b>610.5</b>	<b>4,522.4</b>	<b>0.00</b>	<b>0.00</b>	<b>0.00</b>

## Plan Annotations

MD (usft)	TVD (usft)	Local Coordinates		Comment
		+N/-S (usft)	+E/-W (usft)	
900.0	900.0	0.0	0.0	START NUDGE (2°/100ft BUR)
1,225.0	1,224.3	14.1	11.9	EOB TO 6.5° INC
5,420.1	5,392.4	377.1	318.0	END OF TANGENT
5,745.1	5,716.7	391.2	329.9	EOD TO VERTICAL
5,775.1	5,746.7	391.2	329.9	KOP (12°/100ft BUR)
6,400.1	6,207.9	37.9	350.3	START OF TANGENT
6,500.1	6,233.8	-58.5	355.8	END OF TANGENT
6,625.1	6,250.0	-181.9	362.9	7" ICP *NEW* - STATE SEVENTY HOLES U41-Y44-6HNB
10,931.2	6,250.0	-4,481.0	610.5	BHL - STATE SEVENTY HOLES U41-Y44-6HNB