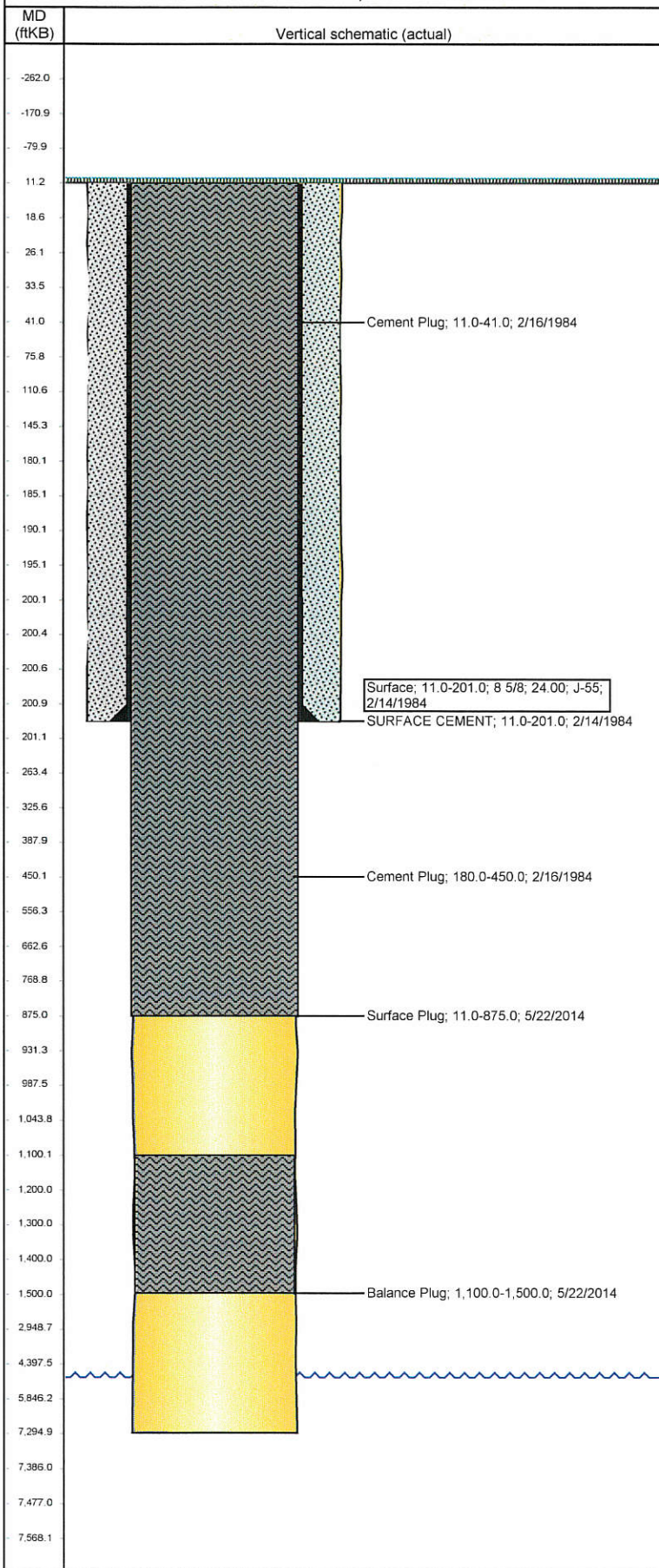


Well Name: SW IGO 01

VERTICAL - ORIGINAL HOLE, 2/23/2015 3:17:54 PM



## Well Header

API	Business Unit	District	Well Config
05-123-11665	DJ BASIN	15	VERTICAL
Original KB Elevation (ft)	KB - GL / MSL (ftKB)	Spud Date	P & A Date
4,996.00	11.00	2/14/1984	5/23/2014

## Comment

WBI - RE-ENTRY - MINIMAL DATA ON WELL

## Directions To Well

CO 14 & CR 390, Go NW 6.5 to WCR 103, North to WCR 104, East to 111, Continue East 1.0 & Turn South thru fence gate, Follow Two Track South 0.9, NorthWest Into

## Current PBTD (ftKB)

## Bottom Hole Location

North-South Distance (ft)	From N or S Line	East-West Distance (ft)	From E or W Line
---------------------------	------------------	-------------------------	------------------

## Plug Back Total Depths

Date	Depth (ftKB)	Method	Com

## Wellbore Sections

Section Des	Size (in)	Act Top, MD (ftKB)	Act Btm, MD (ftKB)
SURFACE	12 1/4	11.0	201.0
OPENHOLE	7 7/8	201.0	7,295.0

## Zone Statuses

Zone Name	Status Date	Status	Fluid Type	Job

## Casing Strings

Csg Des	Run Date	OD (in)	Wt/Len (lb/ft)	Grade	Top, MD (ftKB)	MD (ftKB)
Surface	2/14/1984	8 5/8	24.00	J-55	11.0	201.0

## Cement

Des	Top (ftKB)	Btm (ftKB)
SURFACE CEMENT	11.0	201.0
Cement Plug	11.0	41.0
Cement Plug	180.0	450.0
Surface Plug	11.0	875.0
Balance Plug	1,100.0	1,500.0

## Tubing Components

Item Des	OD (in)	Wt (lb/ft)	Grade	Jts	Len (ft)

## Perforation Data

Zone	Bnch/St g	Entered Shot Total	Top (ftKB)	Btm (ftKB)	Date

## Other In Hole

Run Date	Des	OD (in)	Top (ftKB)	Btm (ftKB)

## Logs

Date	Type	Top, MD (ftKB)	Btm, MD (ftKB)
2/23/1984	GAMMA RAY	6,000.0	7,294.0
2/23/1984	INDUCTION	201.0	7,294.0