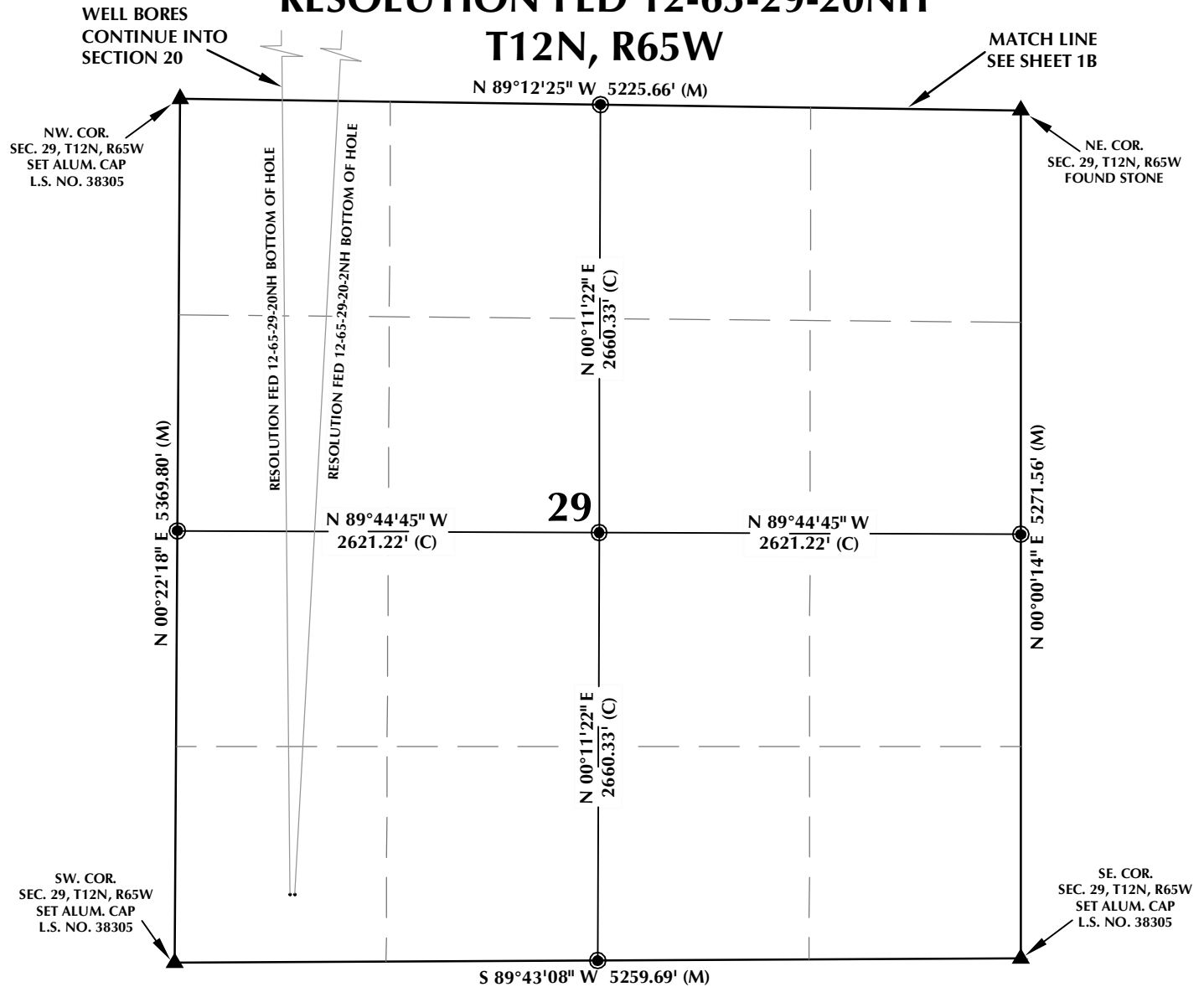


RESOLUTION FED 12-65-29-20NH

T12N, R65W

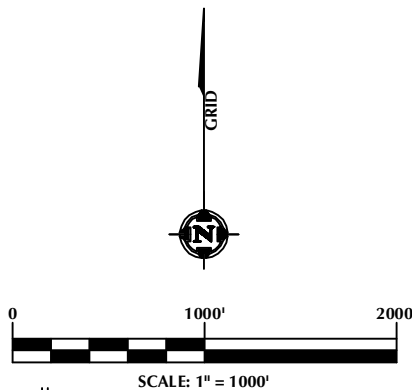


WELL NOTES:

RESOLUTION FED 12-65-29-20NH
 SURFACE: 420' FSL, 715' FWL
 BOTTOM HOLE: 310' FNL, 600' FWL
 RESOLUTION FED 12-65-29-20-2NH
 SURFACE: 420' FSL, 745' FWL
 BOTTOM HOLE: 295' FNL, 1270' FWL

NOTES:

- ▲ INDICATES FOUND SECTION CORNER
- INDICATES CALCULATED CORNER
- BASIS OF BEARING DERIVED FROM COLORADO COORDINATE SYSTEM 1983 NORTH ZONE UNLESS OTHERWISE NOTED.
- ALL MEASURED DISTANCES ARE GRID.
COMBINED SCALE FACTOR: .99975846
- WELL FOOTAGES ARE MEASURED AT RIGHT ANGLES TO THE SECTION LINES.



WELL PAD - RESOLUTION FED 12-65-29-20NH

MULTI-WELL PLAN
RESOLUTION FED 12-65-29-20NH &
RESOLUTION FED 12-65-29-20-2NH
LOCATED IN SECTIONS 29 & 20
T12N, R65W, 6TH P.M.
WELD COUNTY, COLORADO

Anadarko E&P
Onshore LLC
 1099 18th Street
 Denver, Colorado 80202



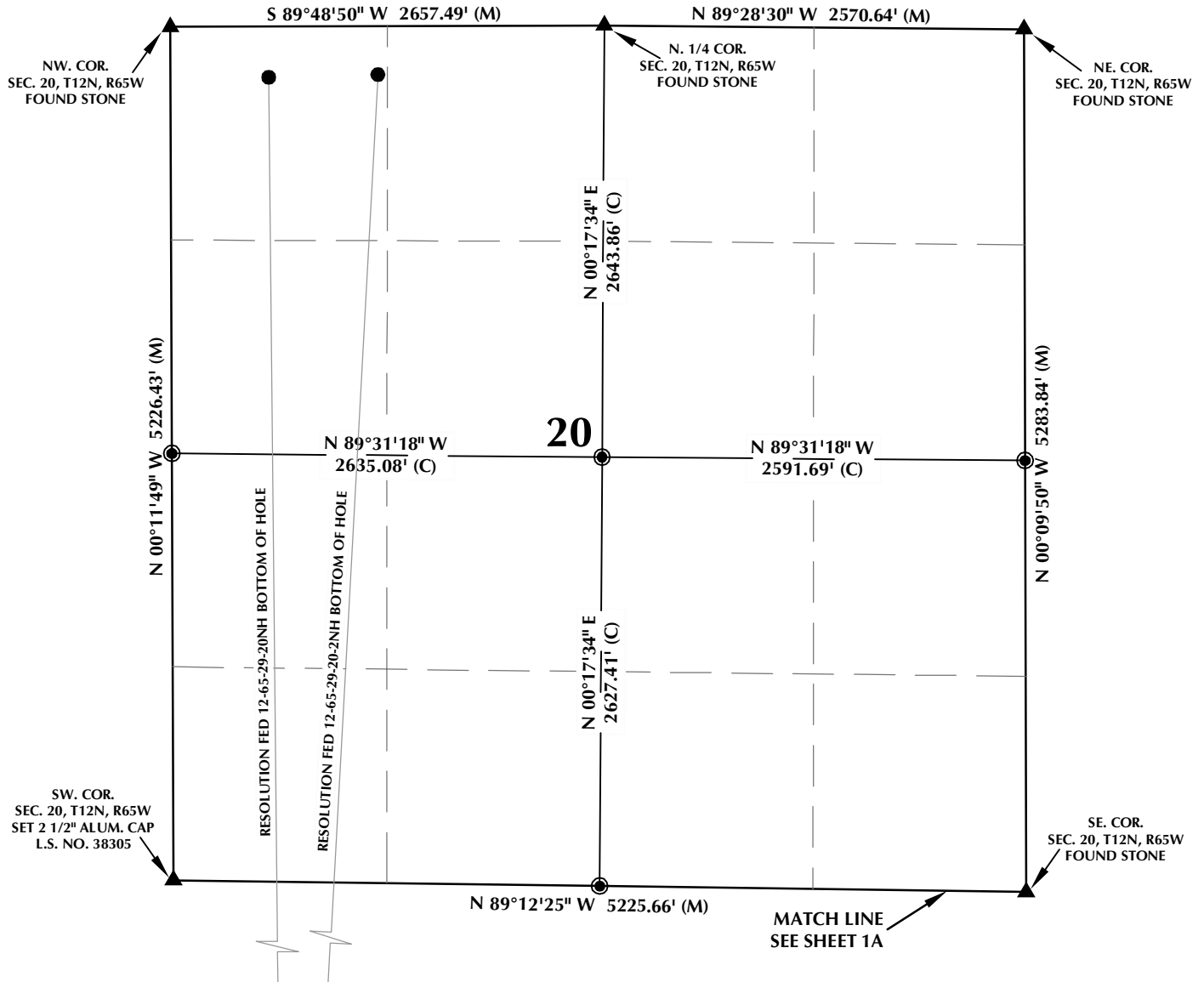
CONSULTING, LLC

SHERIDAN OFFICE
 1095 Saberton Avenue
 Sheridan, Wyoming 82801
 Phone 307-674-0609

LOVELAND OFFICE
 1635 Foxtrail Drive, Suite 204
 Loveland, Colorado 80538
 Phone 970-776-4331

DRAFTED BY:	MDZ	CHECKED BY:	BJR	SHEET NO:
DATE DRAFTED:	1/26/15	DATE SURVEYED:	12/10/14	1A
REVISED:	2/3/15	FILE NAME:	14-52	1A OF 1

RESOLUTION FED 12-65-29-20NH T12N, R65W



WELL NOTES:

RESOLUTION FED 12-65-29-20NH
SURFACE: 420' FSL, 715' FWL
BOTTOM HOLE: 310' FNL, 600' FWL
RESOLUTION FED 12-65-29-20-2NH
SURFACE: 420' FSL, 745' FWL
BOTTOM HOLE: 295' FNL, 1270' FWL

NOTES:

- ▲ INDICATES FOUND SECTION CORNER
- INDICATES CALCULATED CORNER
- BASIS OF BEARING DERIVED FROM COLORADO COORDINATE SYSTEM 1983 NORTH ZONE UNLESS OTHERWISE NOTED.
- ALL MEASURED DISTANCES ARE GRID.
COMBINED SCALE FACTOR: .99975846
- WELL FOOTAGES ARE MEASURED AT RIGHT ANGLES TO THE SECTION LINES.

WELL PAD - RESOLUTION FED 12-65-29-20NH

MULTI-WELL PLAN
RESOLUTION FED 12-65-29-20NH &
RESOLUTION FED 12-65-29-20-2NH
LOCATED IN SECTIONS 29 & 20
T12N, R65W, 6TH P.M.
WELD COUNTY, COLORADO

Anadarko E&P
Onshore LLC
1099 18th Street
Denver, Colorado 80202



CONSULTING, LLC

SHERIDAN OFFICE
1095 Saberton Avenue
Sheridan, Wyoming 82801
Phone 307-674-0609

LOVELAND OFFICE
1635 Foxtrail Drive, Suite 204
Loveland, Colorado 80538
Phone 970-776-4331

DRAFTED BY:	MDZ	CHECKED BY:	BJR	SHEET NO:
DATE DRAFTED:	1/26/15	DATE SURVEYED:	12/10/14	1B
REVISED:	2/3/15	FILE NAME:	14-52	1B OF 1