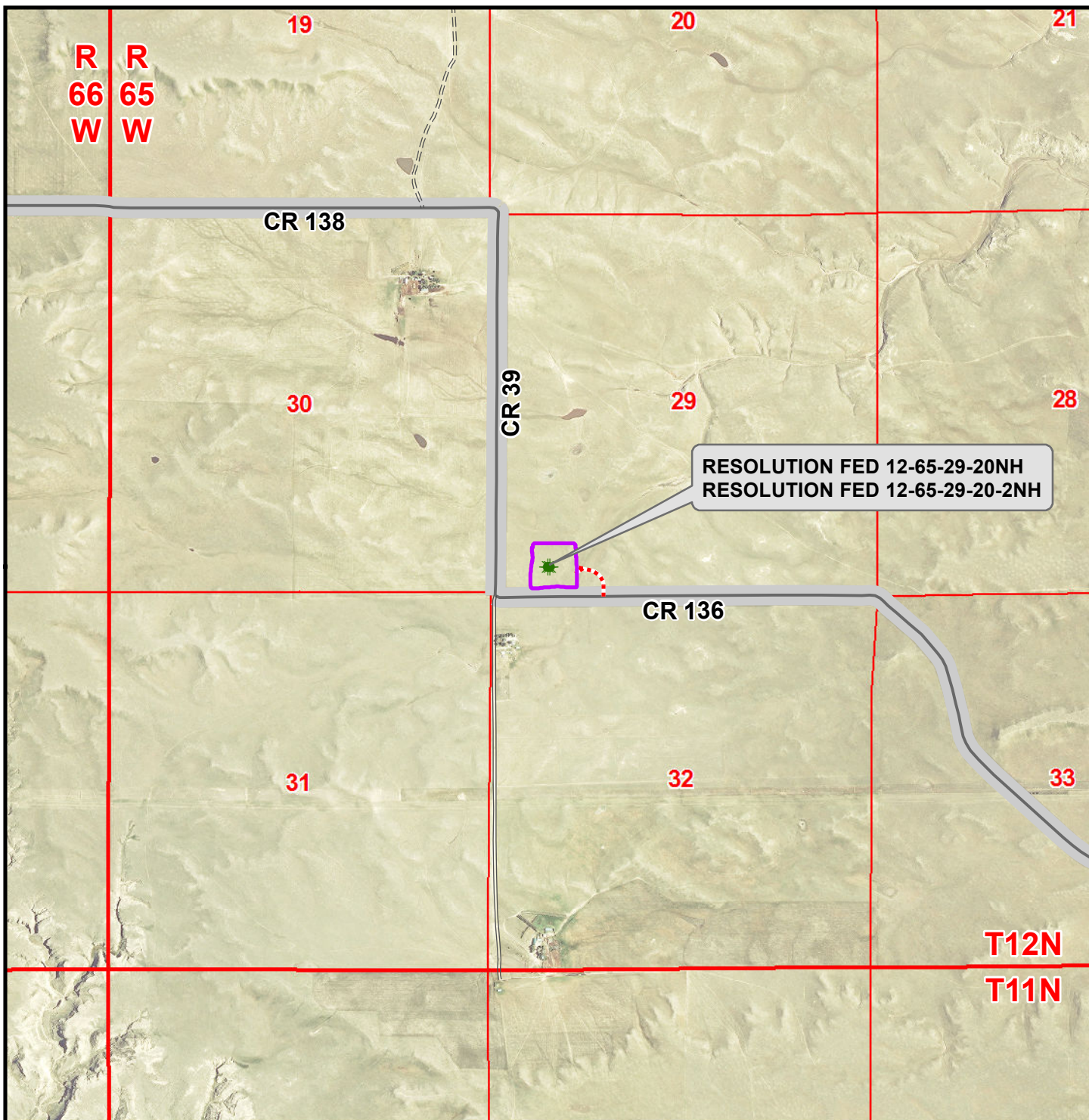


K:\ANADARKO\2014\2014_52_RESOLUTION_PROSPECT_WELLS_CO\GIS\Maps_ABCD\ResolutionFed 12-65-29-20NH\ResolutionFed 12-65-29-20NH Access.mxd 2/3/2015 12:35:06 PM



Legend

- Well - Fed - Proposed Access Road - Proposed Road - Improved - Existing Road - Highway - Existing
 Disturbance Area Road - Primitive - Existing Road - County - Existing

WELL PAD - RESOLUTION FED 12-65-29-20NH

ACCESS ROAD MAP
RESOLUTION FED 12-65-29-20NH &
RESOLUTION FED 12-65-29-20-2NH
LOCATED IN SECTION 29
T12N, R65W, 6th P.M.
WELD COUNTY, COLORADO

**Anadarko E&P
Onshore LLC**

1099 18th Street
Denver, CO 80202



CONSULTING, LLC

SHERIDAN OFFICE LOVELAND OFFICE
2155 North Main Street 1635 Foxtail Drive, Suite 204
Sheridan, Wyoming 82801 Loveland, Colorado 80538
Phone 307-674-0609 Phone 970-776-4331



SCALE: 1" = 2,000ft

NAD83 CO-Nft

DRAWN: JELO

DATE: 26 Jan 2015

REVISED: TL

DATE: 3 Feb 2015