

T11N, R64W

WELL BORE CONTINUES  
INTO SECTION 34  
T12N, R64W

MATCH LINE  
SEE SHEET 2

NW. COR.  
SEC. 3, T11N, R64W  
FOUND BLM  
BRASS CAP

NE. COR.  
SEC. 3, T11N, R64W  
FOUND BLM  
BRASS CAP

**SURFACE LOCATION**  
GROUND ELEVATION= 5440.2'  
NAD 83  
LATITUDE= 40.944073°  
LONGITUDE= -104.531696°

LATITUDE= 40°56'38.663"  
LONGITUDE= -104°31'54.106"

**BOTTOM HOLE LOCATION**  
NAD 83  
LATITUDE= 40.970609°  
LONGITUDE= -104.533317°

LATITUDE= 40°58'14.194"  
LONGITUDE= -104°31'59.942"

S 88°29'42" W  
2644.26' (C)

S 88°29'42" W  
2644.31' (C)

**SURFACE LOCATION**  
NAD 27  
LATITUDE= 40.944091°  
LONGITUDE= -104.531180°

LATITUDE= 40°56'38.727"  
LONGITUDE= -104°31'52.249"

**BOTTOM HOLE LOCATION**  
NAD 27  
LATITUDE= 40.970627°  
LONGITUDE= -104.532801°

LATITUDE= 40°58'14.258"  
LONGITUDE= -104°31'58.083"

SW. COR.  
SEC. 3, T11N, R64W  
FOUND BLM  
BRASS CAP

SE. COR.  
SEC. 3, T11N, R64W  
FOUND 3 1/4"  
ALUM. CAP  
L.S. NO. 34995

S 89°01'54" W 5343.53' (M)

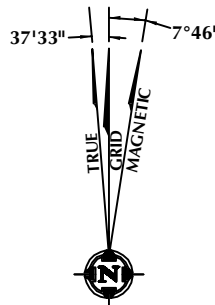
#### CERTIFICATE OF SURVEYOR:

THIS IS TO CERTIFY THAT THE ABOVE PLAT WAS PREPARED FROM FIELD NOTES OF ACTUAL SURVEY MADE BY ME OR UNDER MY SUPERVISION AND THAT THE SAME ARE TRUE AND CORRECT TO THE BEST OF MY KNOWLEDGE AND BELIEF. THIS CERTIFICATE DOES NOT REPRESENT A LAND SURVEY PLAT OR IMPROVEMENT SURVEY PLAT AS DEFINED BY C.S. 38-51-102 AND CANNOT BE RELIED UPON TO DETERMINE OWNERSHIP.

*Benjamin J. Reenders*  
PROFESSIONAL LAND SURVEYOR  
2/6/15

BENJAMIN J. REENDERS  
PROFESSIONAL LAND SURVEYOR  
COLORADO REGISTRATION NUMBER 4836

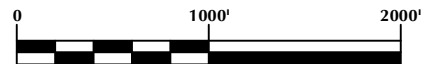
NOTICE:  
ACCORDING TO COLORADO STATE LAW YOU MUST COMMENCE ANY LEGAL ACTION BASED UPON ANY DEFECT IN THIS SURVEY WITHIN THREE YEARS AFTER YOU FIRST DISCOVER SUCH DEFECT. IN NO EVENT MAY ANY ACTION BASED UPON ANY DEFECT IN THIS SURVEY BE COMMENCED MORE THAN TEN YEARS FROM THE DATE ON THE CERTIFICATION SHOWN HEREON.



NOTE:  
MAGNETIC NORTH IS CURRENT AS OF 2/4/2015.  
MAGNETIC NORTH CHANGES WEST 0°06' PER YEAR.

#### NOTES:

- ▲ INDICATES FOUND SECTION CORNER
- INDICATES CALCULATED CORNER
- ELEVATION BASED ON NAVD88 (GEOID09)
- BASIS OF BEARING DERIVED FROM COLORADO COORDINATE SYSTEM 1983 NORTH ZONE UNLESS OTHERWISE NOTED.
- ALL MEASURED DISTANCES ARE GRID.  
COMBINED SCALE FACTOR: .99977325
- OPERATOR: ZACH PAXTON / PDOP = 1.4
- SEE ADDENDUM TO WELL LOCATION CERTIFICATE FOR EXISTING IMPROVEMENTS WITHIN 500' OF THE WELL PAD.
- WELL FOOTAGES ARE MEASURED AT RIGHT ANGLES TO THE SECTION LINES.
- THE BOTTOM OF HOLE BEARS N03°16'36"W, 9679' FROM THE SURFACE LOCATION.



SCALE: 1" = 1000'

#### WELL PAD - RESOLUTION 11-64-3-34-5CH

RESOLUTION 11-64-3-34-4NH  
WELL LOCATION CERTIFICATE  
338' FSL & 2202' FEL SWSE (SURFACE)  
LOCATED IN SECTION 3  
T11N, R64W, 6TH P.M.  
600' FNL & 2590' FEL NWNE (BOTTOM)  
LOCATED IN SECTION 34  
T12N, R64W, 6TH P.M.  
WELD COUNTY, COLORADO

Anadarko E&P  
Onshore LLC  
1099 18th Street  
Denver, Colorado 80202



#### CONSULTING, LLC

SHERIDAN OFFICE  
1095 Saberton Avenue  
Sheridan, Wyoming 82801  
Phone 307-674-0609

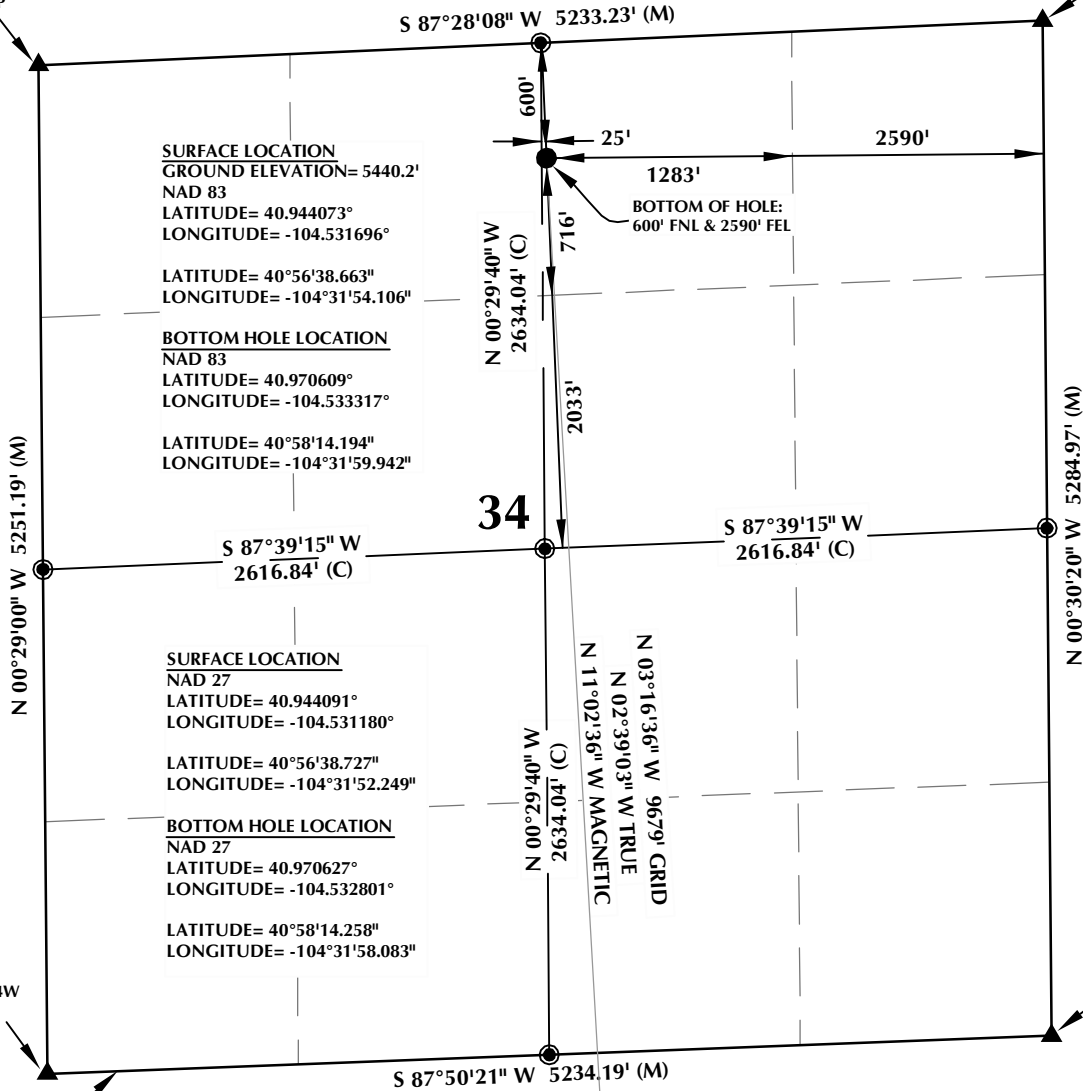
LOVELAND OFFICE  
1635 Foxtrail Drive, Suite 204  
Loveland, Colorado 80538  
Phone 970-776-4331

DRAFTED BY:	BJR	CHECKED BY:	BJR	SHEET NO:
DATE DRAFTED:	2/6/15	DATE SURVEYED:	12/17/14	1
REVISED:		FILE NAME:	14-52	1 OF 2

# T12N, R64W

NW. COR.  
SEC. 34, T12N, R64W  
FOUND ALUM. CAP  
L.S. NO. 16154

NE. COR.  
SEC. 34, T12N, R64W  
SET ALUM. CAP  
L.S. NO. 38305



## CERTIFICATE OF SURVEYOR:

THIS IS TO CERTIFY THAT THE ABOVE PLAT WAS PREPARED FROM FIELD NOTES OF ACTUAL SURVEY MADE BY ME OR UNDER MY SUPERVISION AND THAT THE SAME ARE TRUE AND CORRECT TO THE BEST OF MY KNOWLEDGE AND BELIEF. THIS CERTIFICATE DOES NOT REPRESENT A LAND SURVEY PLAT OR IMPROVEMENT SURVEY PLAT AS DEFINED BY C.S. 38-51-102 AND CANNOT BE RELIED UPON TO DETERMINE OWNERSHIP.

*Benjamin J. Reenders*  
BENJAMIN J. REENDERS  
PROFESSIONAL LAND SURVEYOR  
COLORADO REGISTRATION NUMBER 38305

NOTICE:  
ACCORDING TO COLORADO STATE LAW YOU MUST COMMENCE ANY LEGAL ACTION BASED UPON ANY DEFECT IN THIS SURVEY WITHIN THREE YEARS AFTER YOU FIRST DISCOVER SUCH DEFECT. IN NO EVENT MAY ANY ACTION BASED UPON ANY DEFECT IN THIS SURVEY BE COMMENCED MORE THAN TEN YEARS FROM THE DATE ON THE CERTIFICATION SHOWN HEREON.

NOTE:  
MAGNETIC NORTH IS CURRENT AS OF 2/4/2015.  
MAGNETIC NORTH CHANGES WEST 0°06' PER YEAR.

## NOTES:

- ▲ INDICATES FOUND SECTION CORNER
- INDICATES CALCULATED CORNER
- ELEVATION BASED ON NAVD88 (GEOID09)
- BASIS OF BEARING DERIVED FROM COLORADO COORDINATE SYSTEM 1983 NORTH ZONE UNLESS OTHERWISE NOTED.
- ALL MEASURED DISTANCES ARE GRID.  
COMBINED SCALE FACTOR: .99977325
- OPERATOR: ZACH PAXTON / PDOP = 1.4
- SEE ADDENDUM TO WELL LOCATION CERTIFICATE FOR EXISTING IMPROVEMENTS WITHIN 500' OF THE WELL PAD.
- WELL FOOTAGES ARE MEASURED AT RIGHT ANGLES TO THE SECTION LINES.
- THE BOTTOM OF HOLE BEARS N03°16'36"W, 9679' FROM THE SURFACE LOCATION.



## WELL PAD - RESOLUTION 11-64-3-34-5CH

**RESOLUTION 11-64-3-34-4NH**  
**WELL LOCATION CERTIFICATE**  
338' FSL & 2202' FEL SWSE (SURFACE)  
LOCATED IN SECTION 3  
T11N, R64W, 6TH P.M.  
600' FNL & 2590' FEL NWNE (BOTTOM)  
LOCATED IN SECTION 34  
T12N, R64W, 6TH P.M.  
WELD COUNTY, COLORADO

**Anadarko E&P**  
**Onshore LLC**  
1099 18th Street  
Denver, Colorado 80202



## CONSULTING, LLC

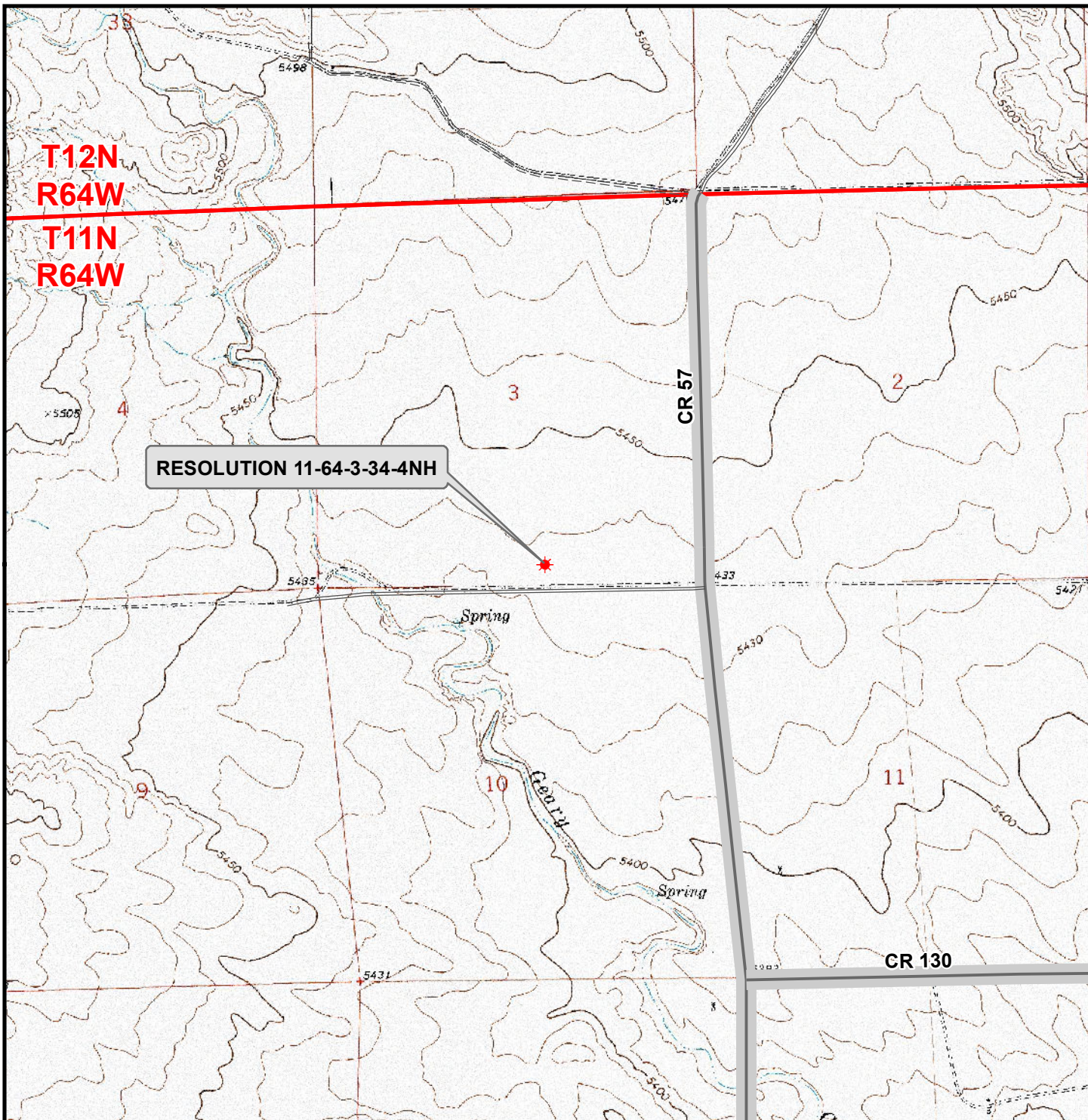
**SHERIDAN OFFICE**  
1095 Saberton Avenue  
Sheridan, Wyoming 82801  
Phone 307-674-0609

**LOVELAND OFFICE**  
1635 Foxtrail Drive, Suite 204  
Loveland, Colorado 80538  
Phone 970-776-4331

DRAFTED BY:	BJR	CHECKED BY:	BJR	SHEET NO:
DATE DRAFTED:	2/6/15	DATE SURVEYED:	12/17/14	2
REVISED:		FILE NAME:	14-52	2 OF 2



K:\ANADARKO\2014\2014\_52\_RESOLUTION\_PROSPECT\_WELLS\_COIGISMaps\_ABCD\Resolution 11-64-3-34-5CH\Resolution 11-64-3-34-4NH.mxd 2/6/2015 5:37:37 PM



### Legend

- ★ Well - Fee - Proposed    === Road - Primitive - Existing    — Road - County - Existing  
—— Road - Improved - Existing    — Road - Highway - Existing

WELL PAD - RESOLUTION 11-64-3-34-5CH

**GENERAL LOCATION MAP  
RESOLUTION 11-64-3-34-4NH  
LOCATED IN SECTION 3  
T11N, R64W, 6th P.M.  
WELD COUNTY, COLORADO**

**Anadarko E&P  
Onshore LLC**

1099 18th Street  
Denver, CO 80202



**CONSULTING, LLC**

SHERIDAN OFFICE  
1095 Saberton Avenue  
Sheridan, Wyoming 82801  
Phone 307-674-0609

LOVELAND OFFICE  
1635 Foxtail Drive, Suite 204  
Loveland, Colorado 80538  
Phone 970-776-4331



SCALE: 1" = 2,000ft

NAD83 CO-Nft

DRAWN:

JELo

DATE: 6 Feb 2015

REVISED:

DATE: