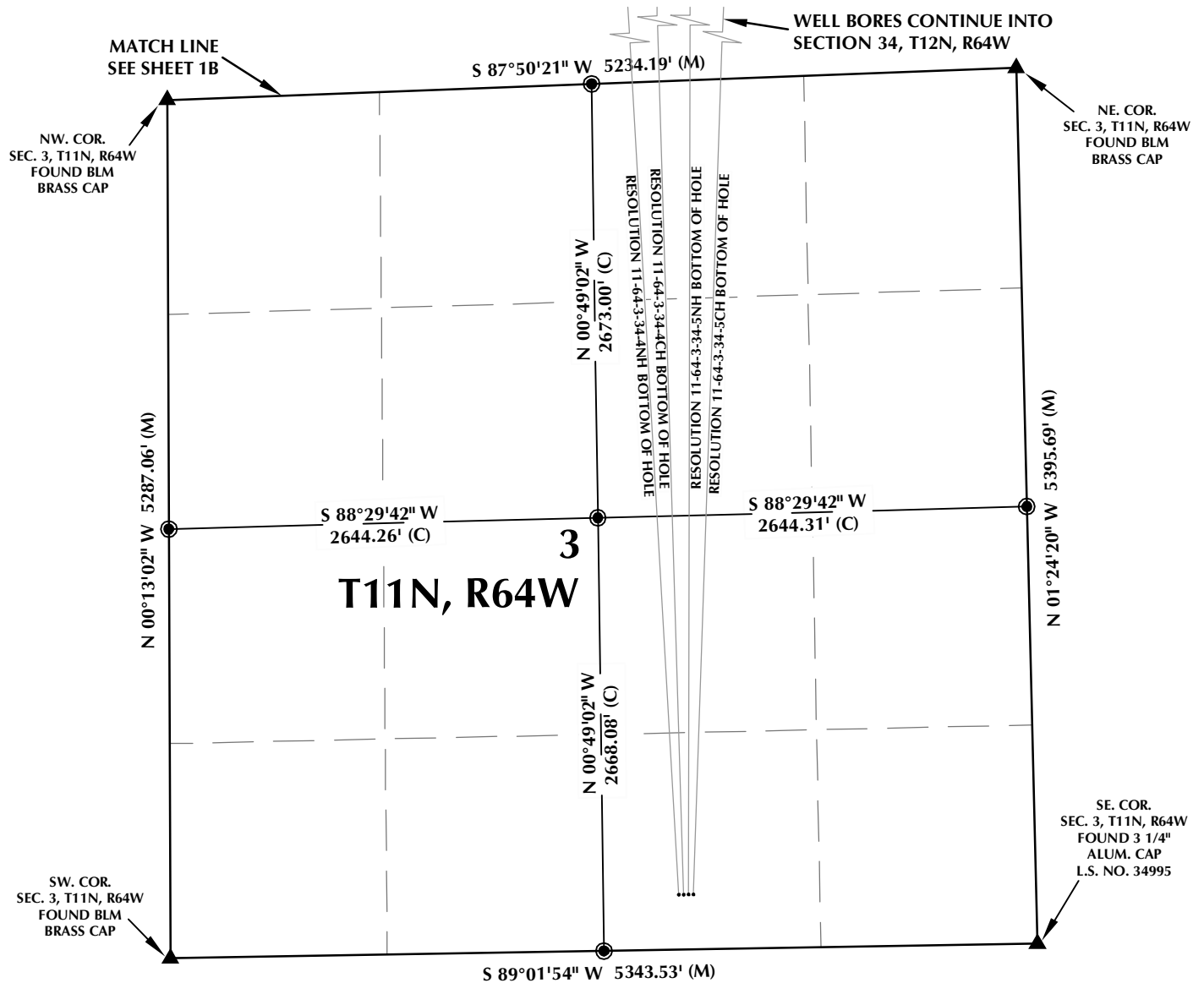


RESOLUTION 11-64-3-34-5CH

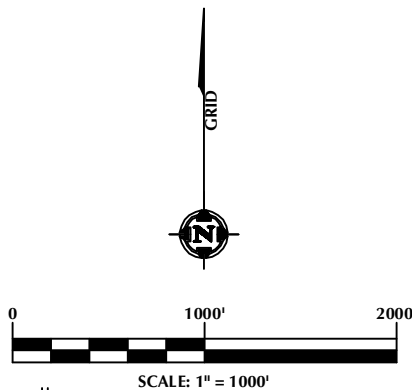


WELL NOTES:

RESOLUTION 11-64-3-34-4NH
SURFACE: 338' FSL, 2202' FEL
BOTTOM HOLE: 600' FNL, 2590' FEL
RESOLUTION 11-64-3-34-4CH
SURFACE: 338' FSL, 2172' FEL
BOTTOM HOLE: 600' FNL, 2300' FEL
RESOLUTION 11-64-3-34-5NH
SURFACE: 338' FSL, 2142' FEL
BOTTOM HOLE: 600' FNL, 1960' FEL
RESOLUTION 11-64-3-34-5CH
SURFACE: 338' FSL, 2112' FEL
BOTTOM HOLE: 600' FNL, 1620' FEL

NOTES:

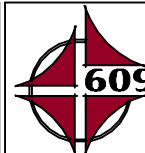
- ▲ INDICATES FOUND SECTION CORNER
- INDICATES CALCULATED CORNER
- BASIS OF BEARING DERIVED FROM COLORADO COORDINATE SYSTEM 1983 NORTH ZONE UNLESS OTHERWISE NOTED.
- ALL MEASURED DISTANCES ARE GRID.
- COMBINED SCALE FACTOR: .99977325
- WELL FOOTAGES ARE MEASURED AT RIGHT ANGLES TO THE SECTION LINES.



WELL PAD - RESOLUTION 11-64-3-34-5CH

MULTI-WELL PLAN
RESOLUTION 11-64-3-34-4NH,
RESOLUTION 11-64-3-34-4CH,
RESOLUTION 11-64-3-34-5NH &
RESOLUTION 11-64-3-34-5CH
LOCATED IN SECTION 3
T11N, R64W, 6TH P.M.
LOCATED IN SECTION 34
T12N, R64W, 6TH P.M.
WELD COUNTY, COLORADO

**Anadarko E&P
Onshore LLC**
1099 18th Street
Denver, Colorado 80202



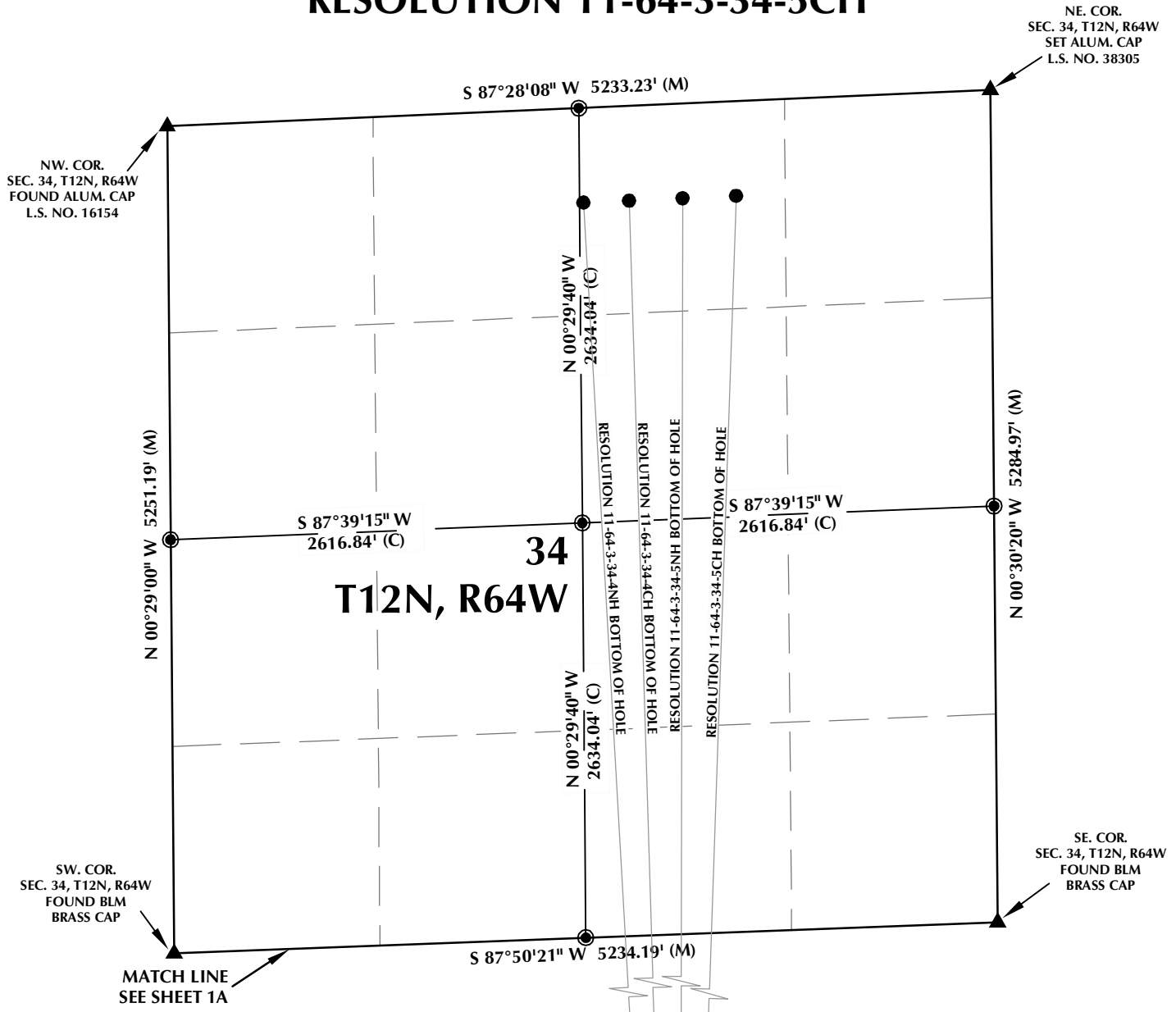
CONSULTING, LLC

SHERIDAN OFFICE
1095 Saberton Avenue
Sheridan, Wyoming 82801
Phone 307-674-0609

LOVELAND OFFICE
1635 Foxtrail Drive, Suite 204
Loveland, Colorado 80538
Phone 970-776-4331

DRAFTED BY:	LMO	CHECKED BY:	BJR	SHEET NO:
DATE DRAFTED:	2/6/15	DATE SURVEYED:	12/17/14	1A
REVISED:		FILE NAME:	14-52	1A OF 1

RESOLUTION 11-64-3-34-5CH

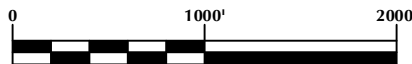
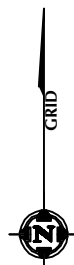


WELL NOTES:

RESOLUTION 11-64-3-34-4NH
SURFACE: 338' FSL, 2202' FEL
BOTTOM HOLE: 600' FNL, 2590' FEL
RESOLUTION 11-64-3-34-4CH
SURFACE: 338' FSL, 2172' FEL
BOTTOM HOLE: 600' FNL, 2300' FEL
RESOLUTION 11-64-3-34-5NH
SURFACE: 338' FSL, 2142' FEL
BOTTOM HOLE: 600' FNL, 1960' FEL
RESOLUTION 11-64-3-34-5CH
SURFACE: 338' FSL, 2112' FEL
BOTTOM HOLE: 600' FNL, 1620' FEL

NOTES:

1. ▲ INDICATES FOUND SECTION CORNER
2. ● INDICATES CALCULATED CORNER
3. BASIS OF BEARING DERIVED FROM COLORADO COORDINATE SYSTEM 1983 NORTH ZONE UNLESS OTHERWISE NOTED.
4. ALL MEASURED DISTANCES ARE GRID.
5. WELL FOOTAGES ARE MEASURED AT RIGHT ANGLES TO THE SECTION LINES.



SCALE: 1" = 1000'

WELL PAD - RESOLUTION 11-64-3-34-5CH

MULTI-WELL PLAN
RESOLUTION 11-64-3-34-4NH,
RESOLUTION 11-64-3-34-4CH,
RESOLUTION 11-64-3-34-5NH &
RESOLUTION 11-64-3-34-5CH
LOCATED IN SECTION 3
T11N, R64W, 6TH P.M.
LOCATED IN SECTION 34
T12N, R64W, 6TH P.M.
WELD COUNTY, COLORADO

**Anadarko E&P
Onshore LLC**
1099 18th Street
Denver, Colorado 80202



CONSULTING, LLC

SHERIDAN OFFICE
1095 Saberton Avenue
Sheridan, Wyoming 82801
Phone 307-674-0609

LOVELAND OFFICE
1635 Foxtrail Drive, Suite 204
Loveland, Colorado 80538
Phone 970-776-4331

DRAFTED BY:	LMO	CHECKED BY:	BJR	SHEET NO:
DATE DRAFTED:	2/6/15	DATE SURVEYED:	12/17/14	1B
REVISED:		FILE NAME:	14-52	1B OF 1