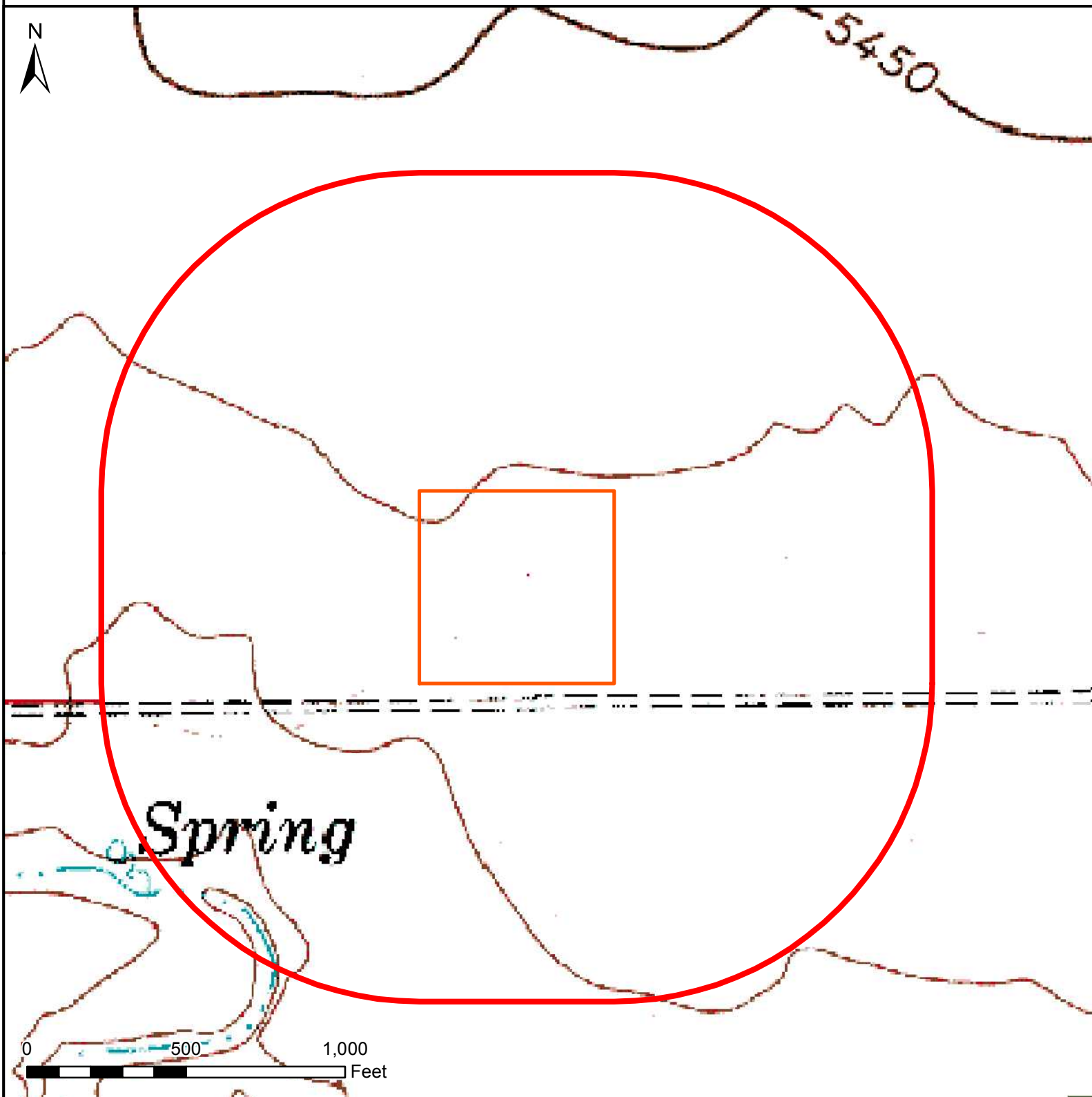


# HYDROLOGY MAP




## RESOLUTION 11-64-3-34-5CH



### Nearest Surface Water Feature

Creek: 880' SW 5415'  
Loc Elev: 5440'

### Legend

-  1000' buffer
-  Well pad (proposed)
-  Existing oil/gas well (COGCC)

All measurements are made from  
edge of disturbed area.



Date created: 2/17/2015  
Created by: APC Regulatory GIS  
Scale: 1:5,000  
Projection: NAD83 UTM 13N