



WARRIOR
ENERGY SERVICES

RADIAL CEMENT BOND LOG
GAMMA RAY
CCL

Company		Kerr McGee Oil & Gas					
Well		CANNON 32-3					
Field		Wattenberg					
County		Weld					
State		CO					
Location:		API # : 05-123-32560					
Permanent Datum		GL	Elevation 4847				
Log Measured From		KB 14					
Drilling Measured From		KB					
Other Services							
SHL: 1984' FNL 608' FNL SW/NW							
LAT: 40.16920 LONG: -104.65700							
SEC 3 TWP 2N RGE 65W							
Date		2-9-2015					
Run Number	ONE						
Depth Driller	7780						
Depth Logger	1600						
Bottom Logged Interval	1600						
Top Log Interval	Surface						
Open Hole Size	7 7/8						
Type Fluid	WATER						
Density / Viscosity	1.0						
Max. Recorded Temp.	79						
Estimated Cement Top	70						
Time Well Ready	NA						
Time Logger on Bottom	NA						
Equipment Number	7770						
Location	GREELEY						
Recorded By	A.STEERMAN						
Witnessed By	L.LEOS						
Borehole Record		Tubing Record					
Run Number	Bit	From	To	Size	Weight	From	To
Casing Record	Size		Wgt/Ft		Top		Bottom
Surface String	8 5/8		24#		0		750
Prot. String							
Production String	4 1/2		11.6#		0		7854
Liner							

<<< Fold Here >>>

All interpretations are opinions based on inferences from electrical or other measurements and we cannot and do not guarantee the accuracy or correctness of any interpretation, and we shall not, except in the case of gross or willful negligence on our part, be liable or responsible for any loss, costs, damages, or expenses incurred or sustained by anyone resulting from any interpretation made by any of our officers, agents or employees. These interpretations are also subject to our general terms and conditions set out in our current Price Schedule.



Comments

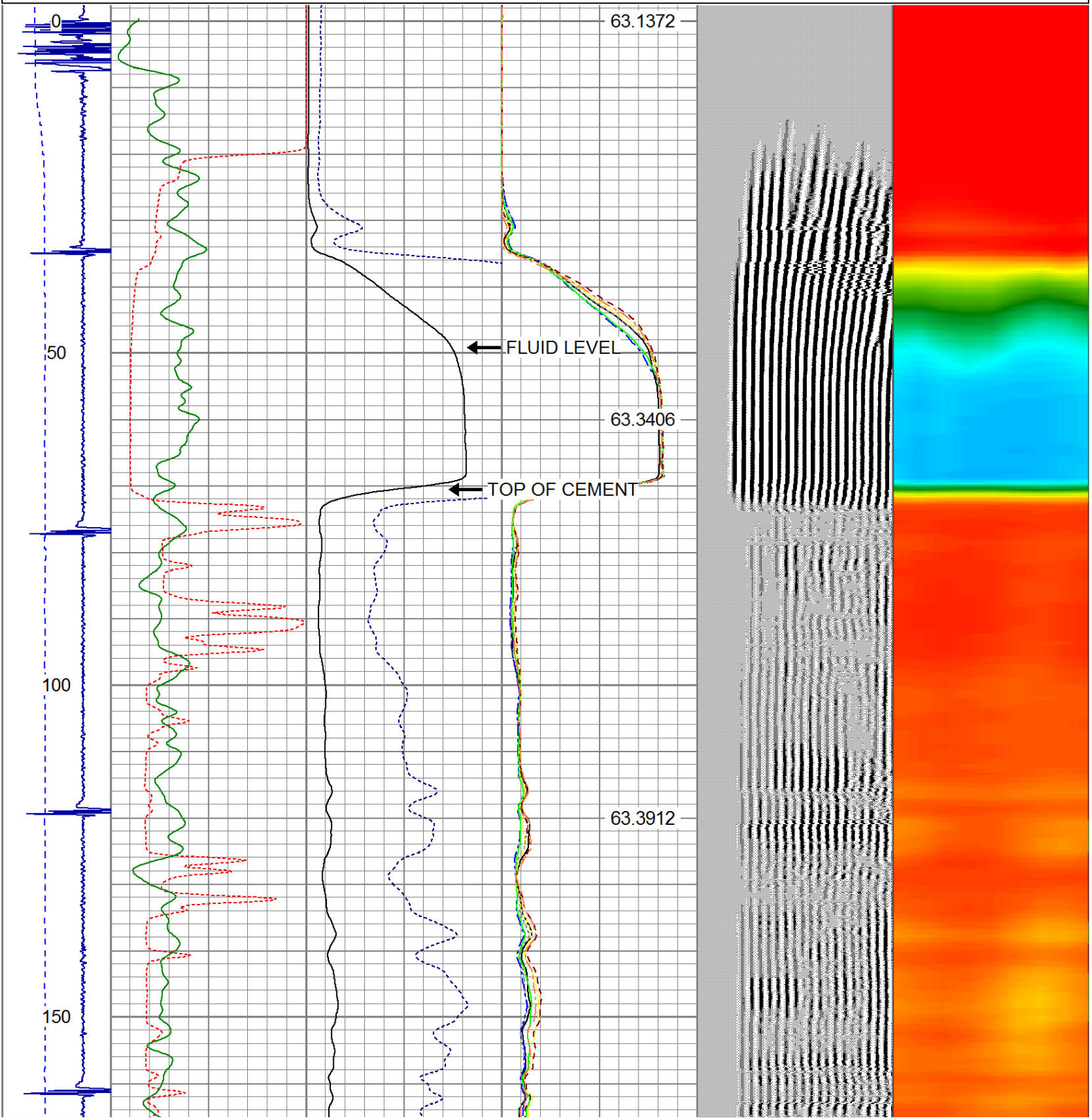
NOT CORROLATED
WELL LOADED AND READY UPON ARRIVAL
RAN CBL TO VERIFY CEMENT.

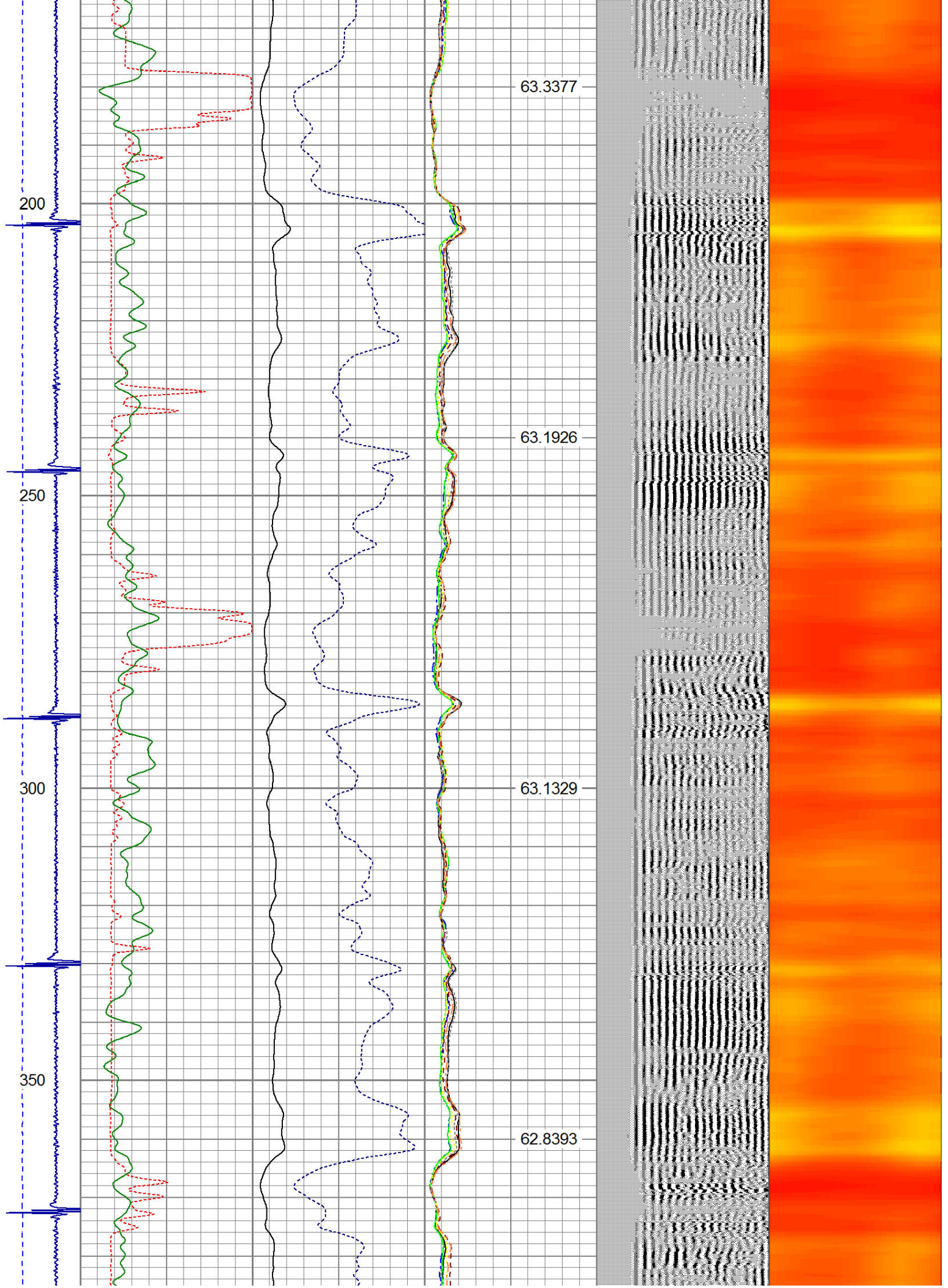
THANK YOU FOR USING WARRIOR ENERGY!

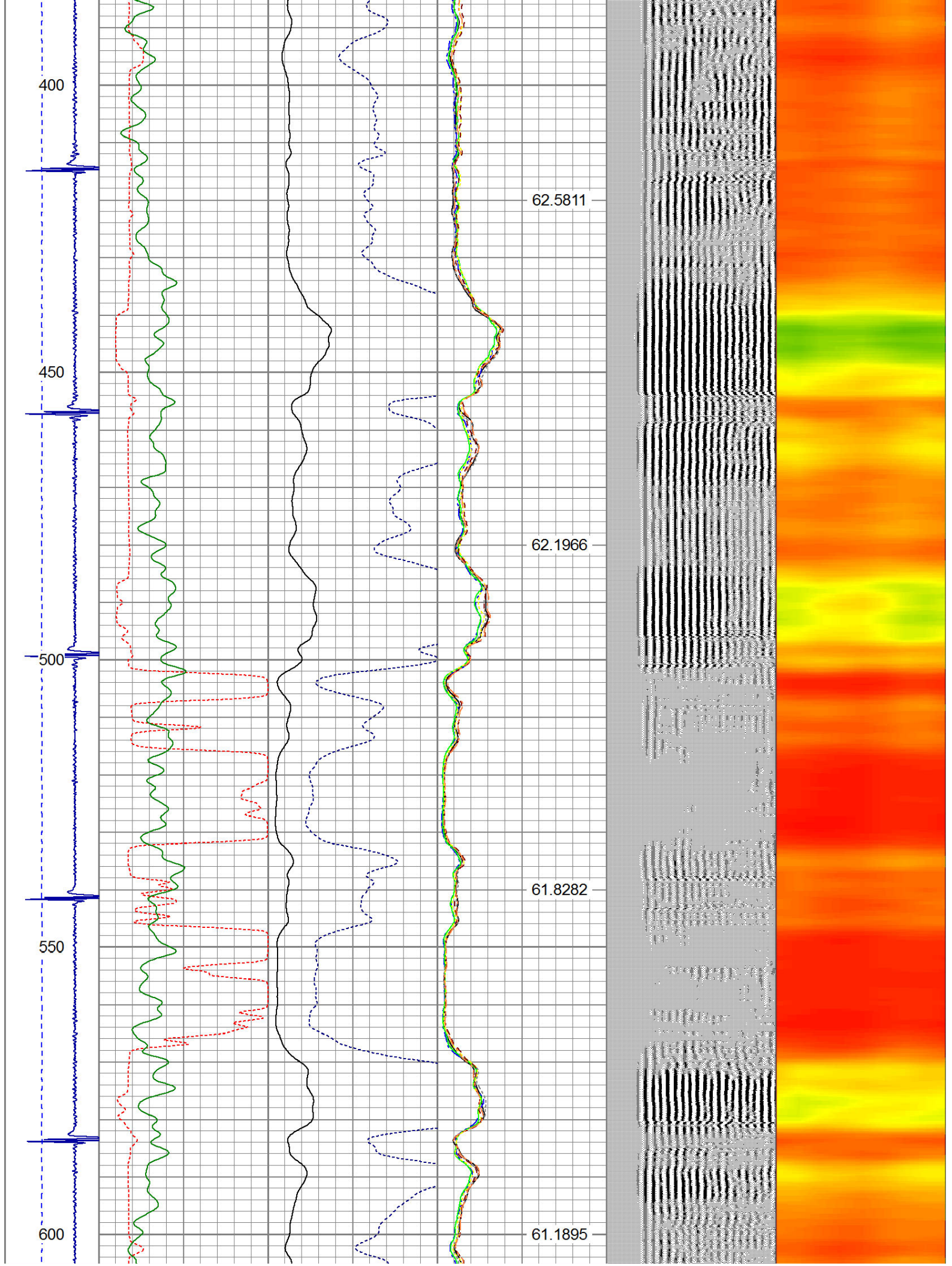
Sensor	Offset (ft)	Schematic	Description	Len (ft)	OD (in)	Wt (lb)

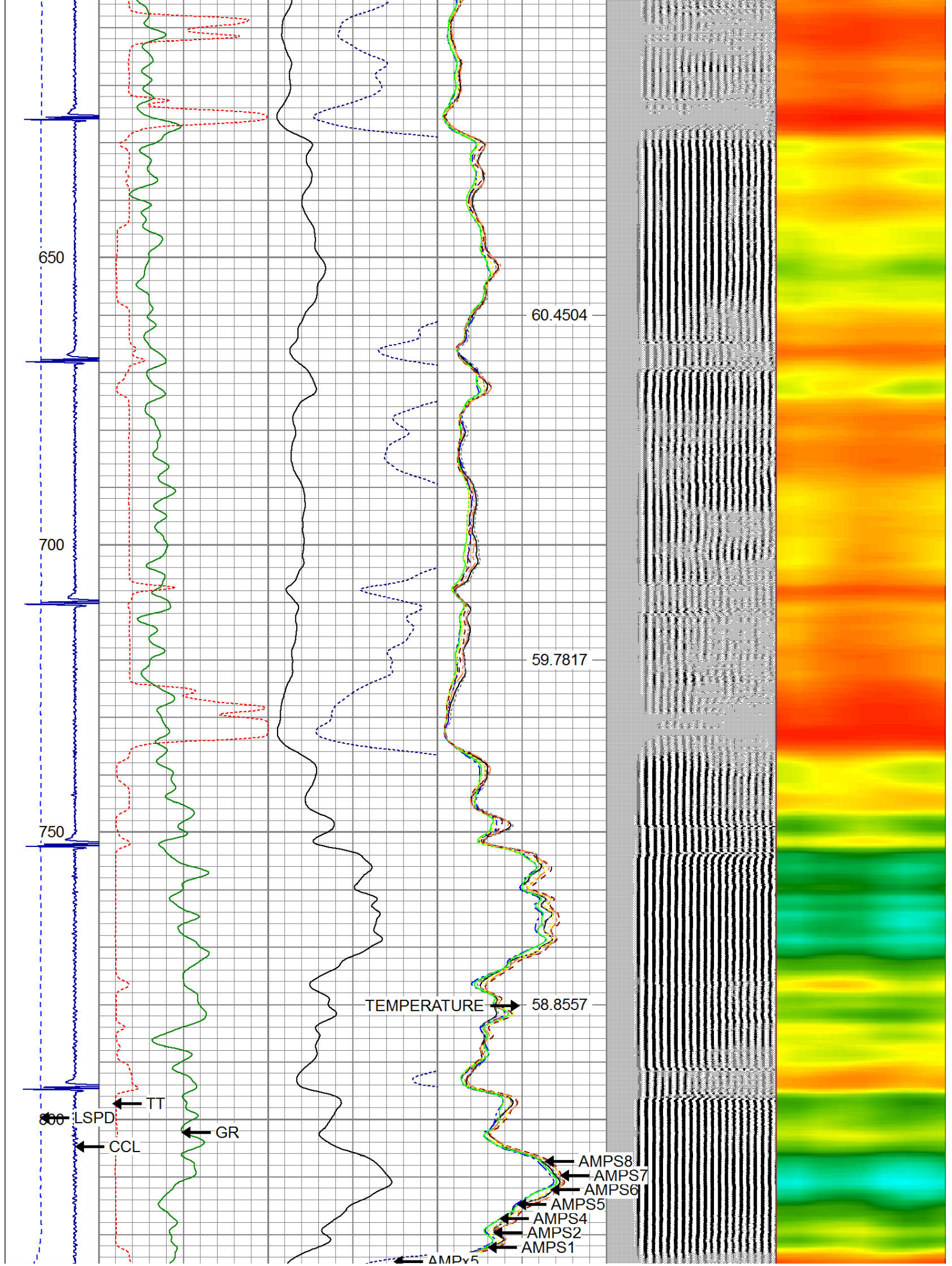
			CENT #2 -Probe (PTS_MONO)	3.00	2.75	35.00
HEADVOLT	16.25					
IntTemp	14.83					
WVF3FT	11.58		RBT-Probe (Base)	8.92	2.75	90.00
WVFCAL	11.58		Probe Radii Bond Tool with Digital Telemetry			
WVFS1	11.58					
WVFS2	11.58					
WVFS3	11.58					
WVFS4	11.58					
WVFS5	11.58					
WVFS6	11.58					
WVFS7	11.58					
WVFS8	11.58					
WVF5FT	10.58					
			CENT-Probe (PT_MONO2)	3.00	2.75	35.00
CCL	3.64					
			GR-Probe (275)	4.33	2.75	30.00
			Probe 2.75"			
GR	0.90					
Dataset: cannon 32-3.db: field/well/run1/pass4 Total Length: 19.25 ft Total Weight: 190.00 lb O.D. 2.75 in						

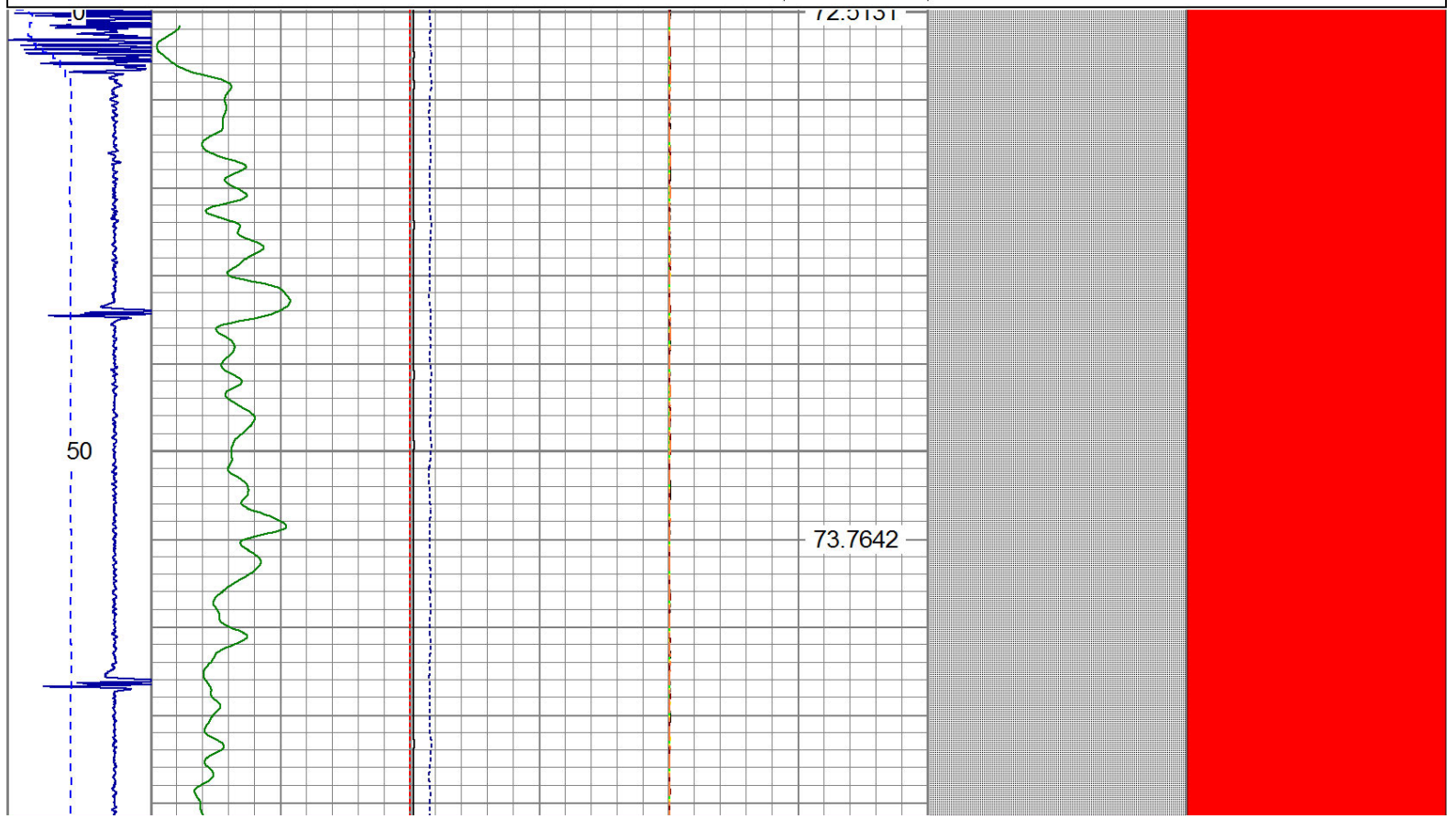
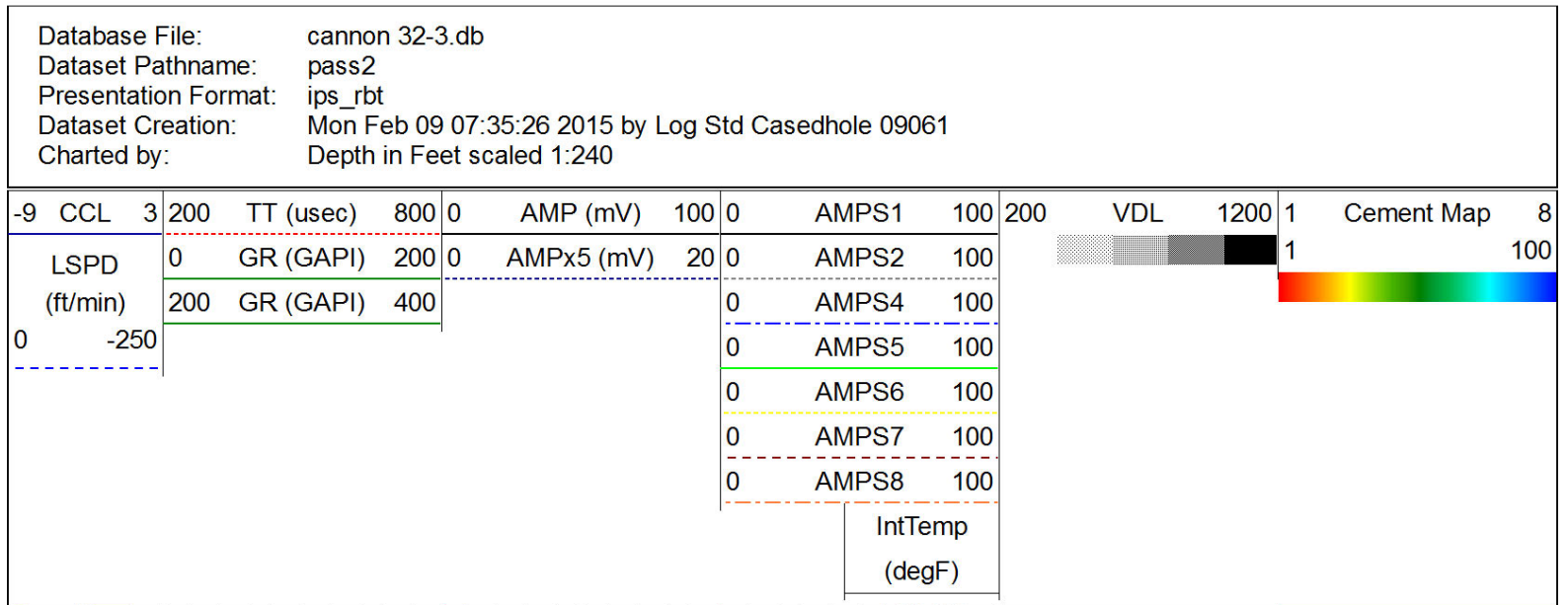
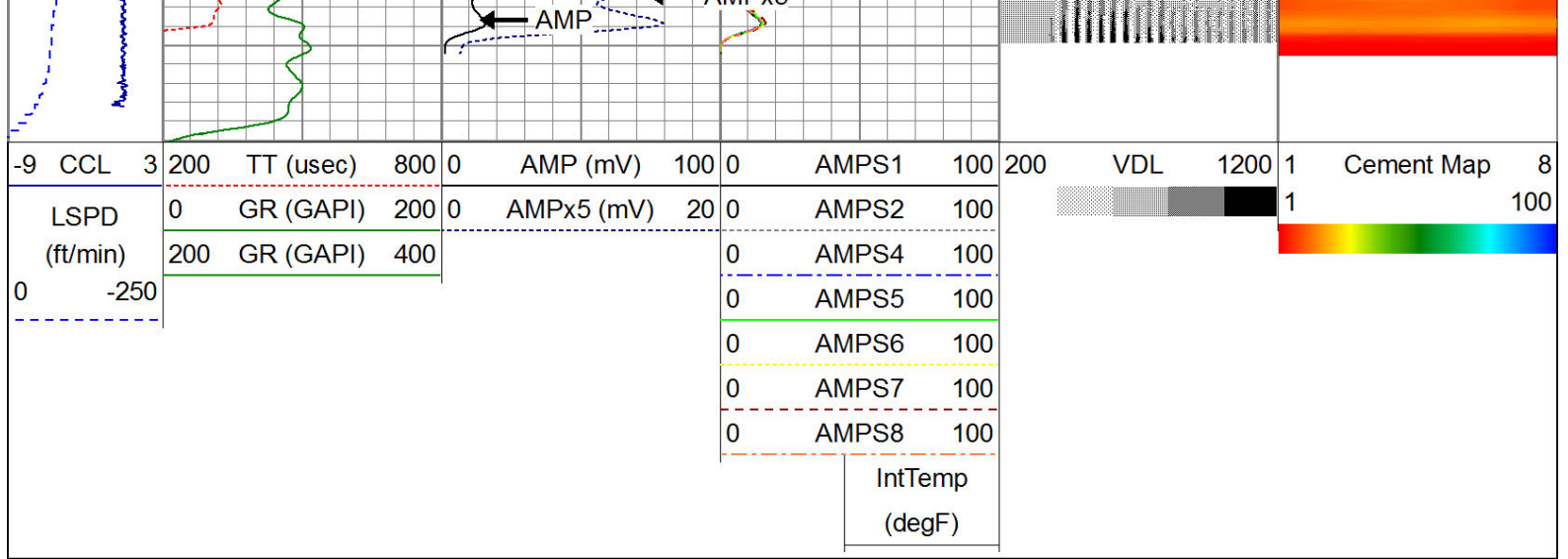
Dataset Creation: Mon Feb 09 08:51:34 2015 by Log Std Casedhole 09061																														
Charted by: Depth in Feet scaled 1:240																														
-9	CCL	3	200	TT (usec)	800	0	AMP (mV)	100	0	AMPS1	100	200	VDL	1200	1	Cement Map	8													
LSPD (ft/min)	0		0	GR (GAPI)	200	0	AMPx5 (mV)	20	0	AMPS2	100			1				100												
	200		200	GR (GAPI)	400			0	AMPS4	100																				
0		-250						0	AMPS5	100																				
								0	AMPS6	100																				
								0	AMPS7	100																				
								0	AMPS8	100																				
										IntTemp																				
										(degF)																				

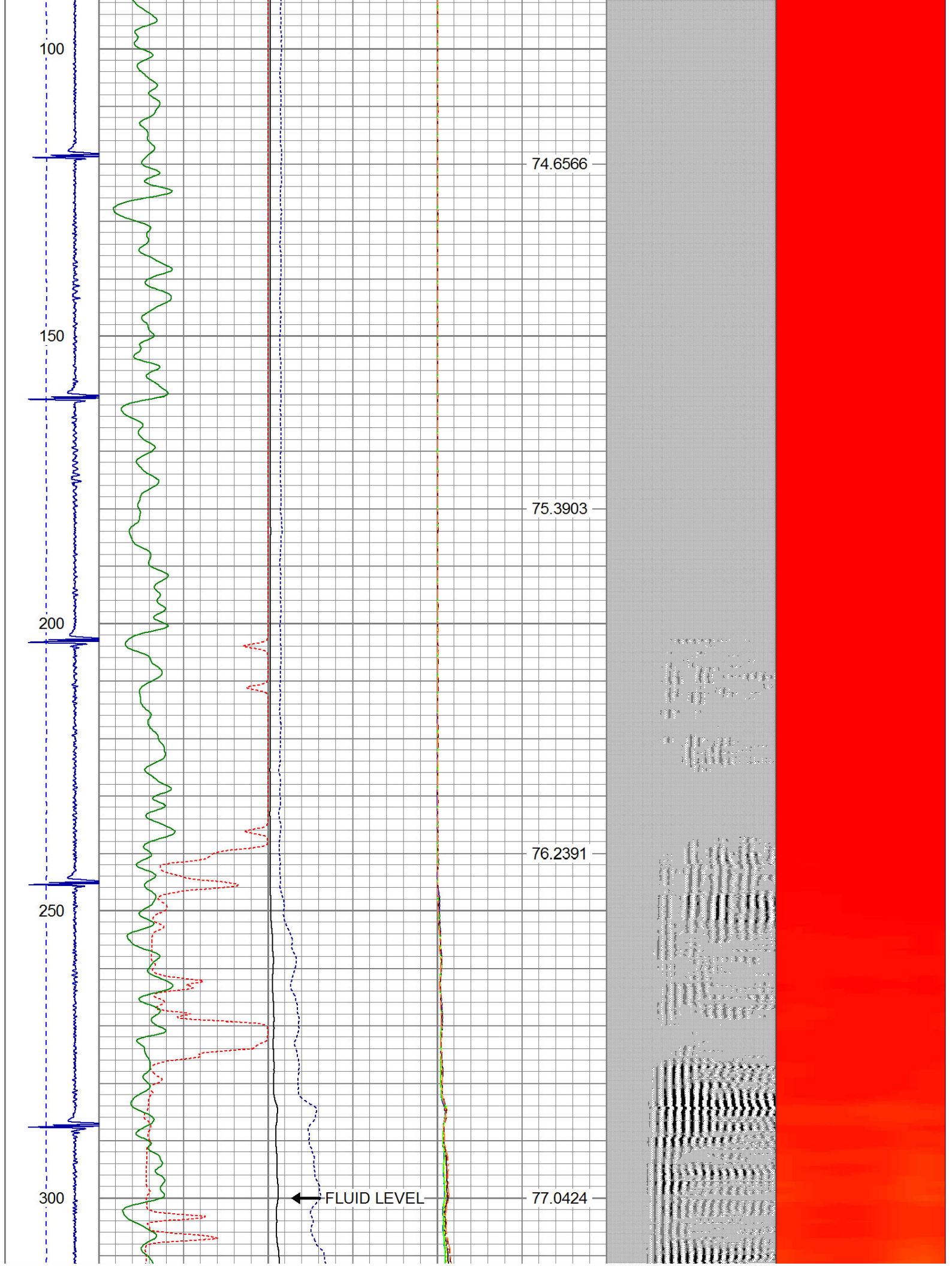


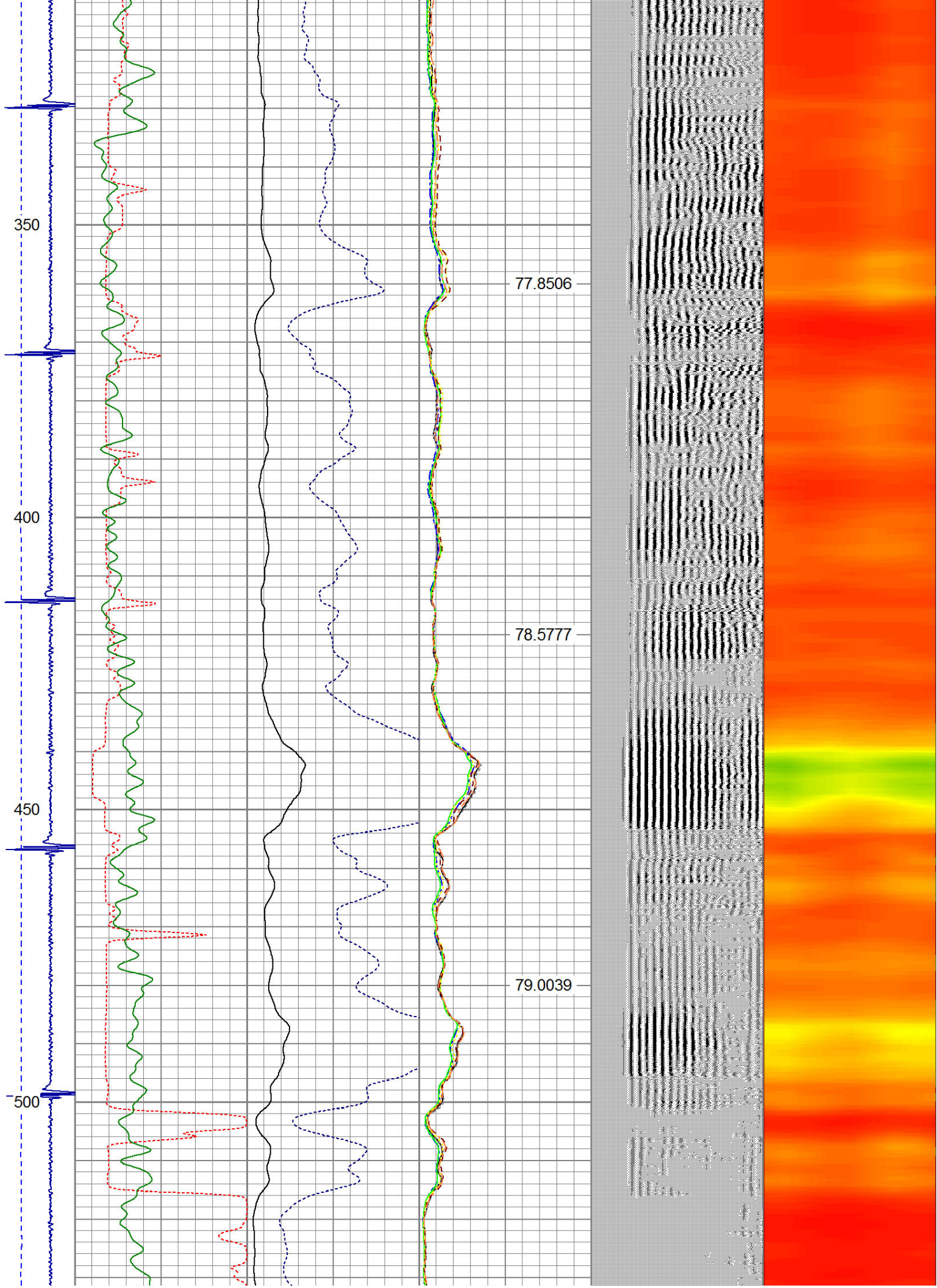


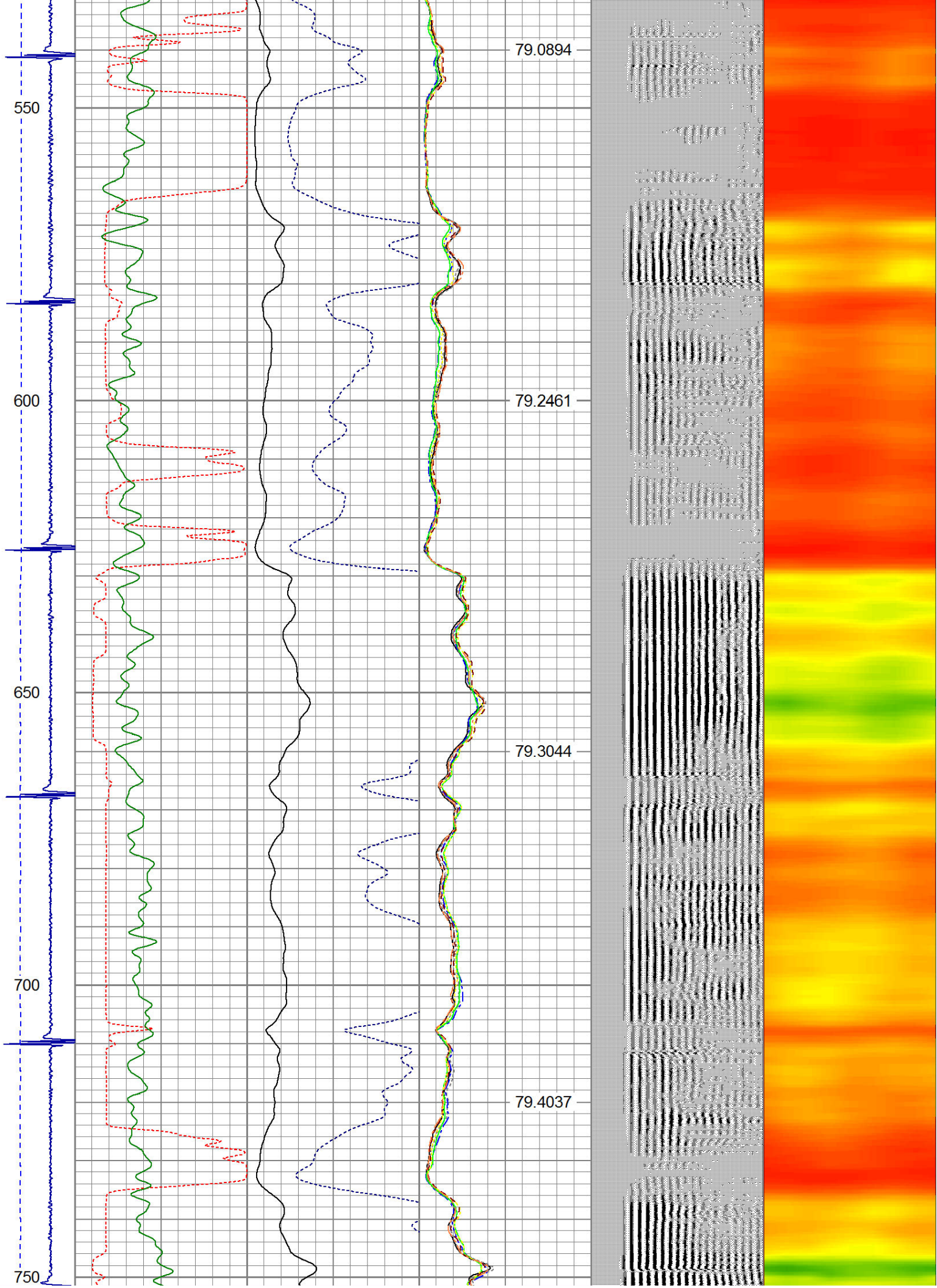


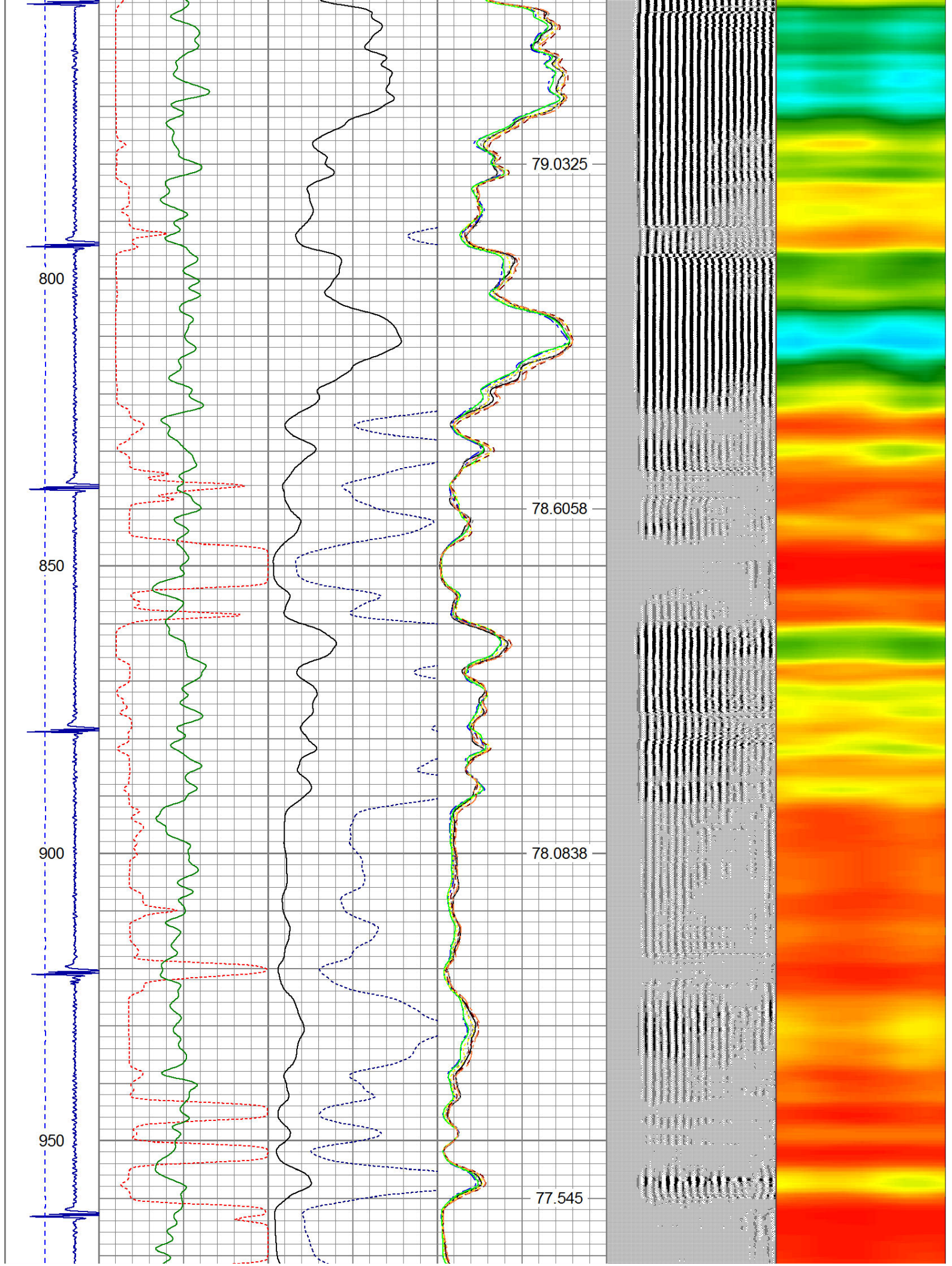


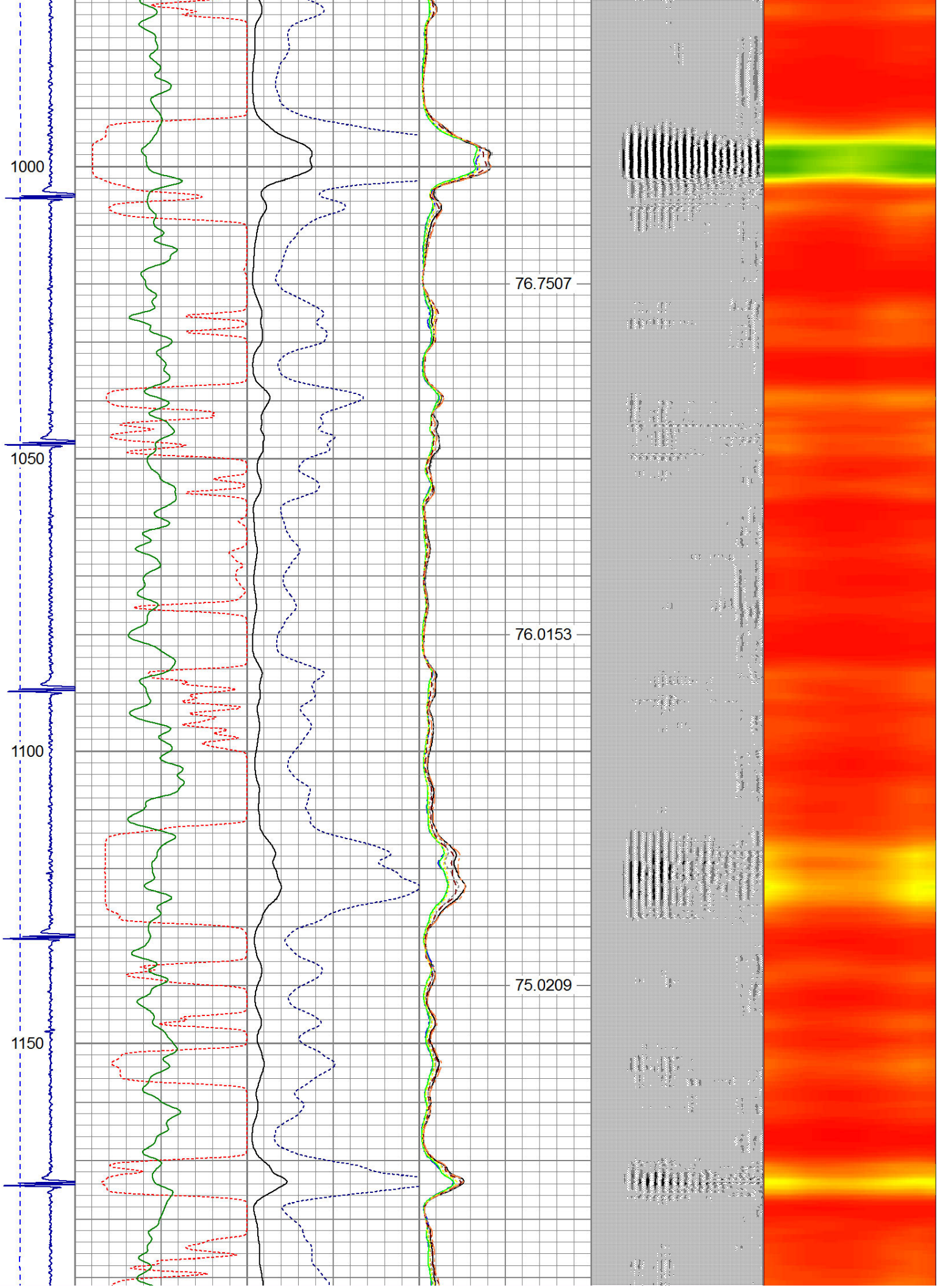


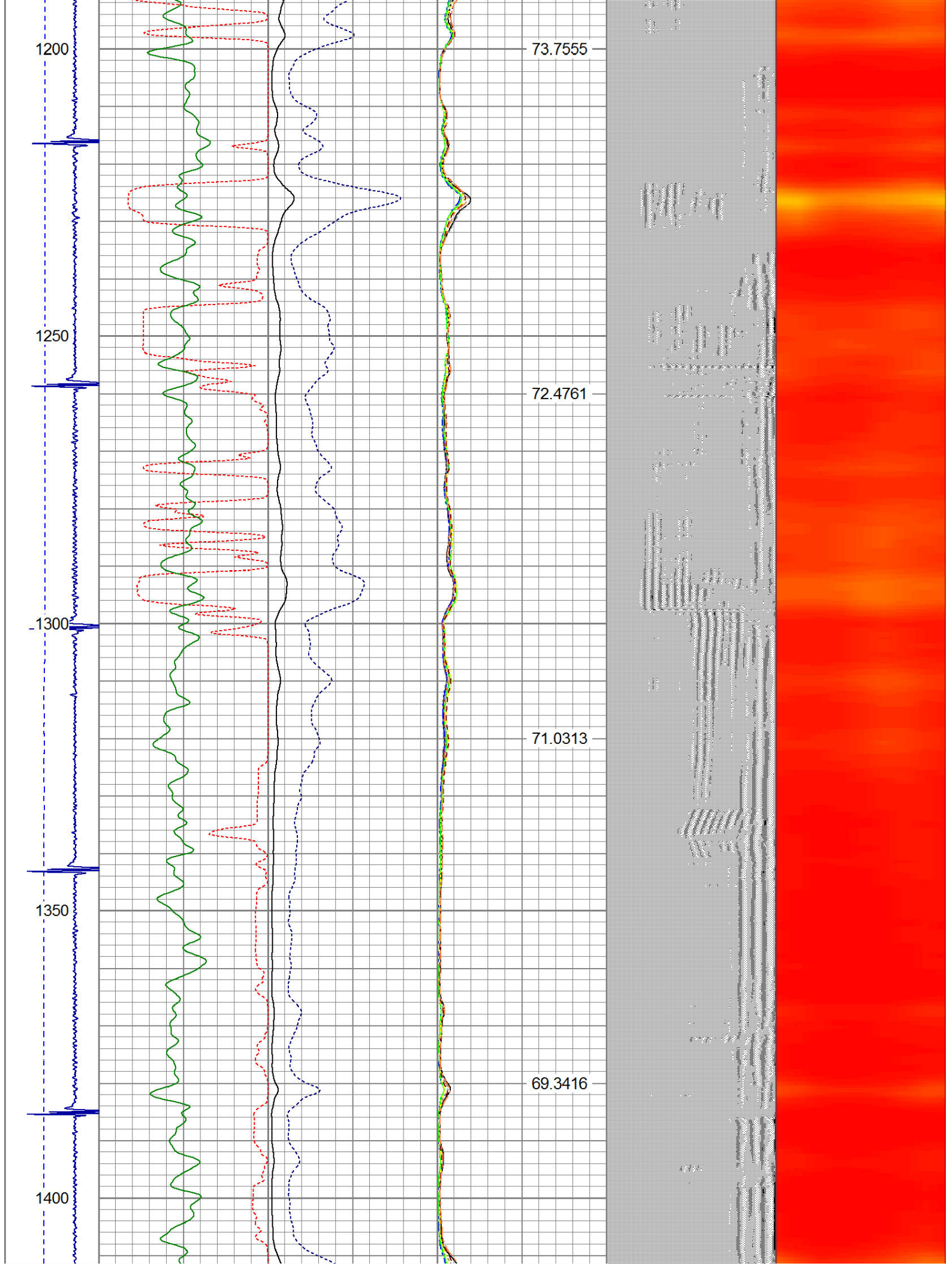


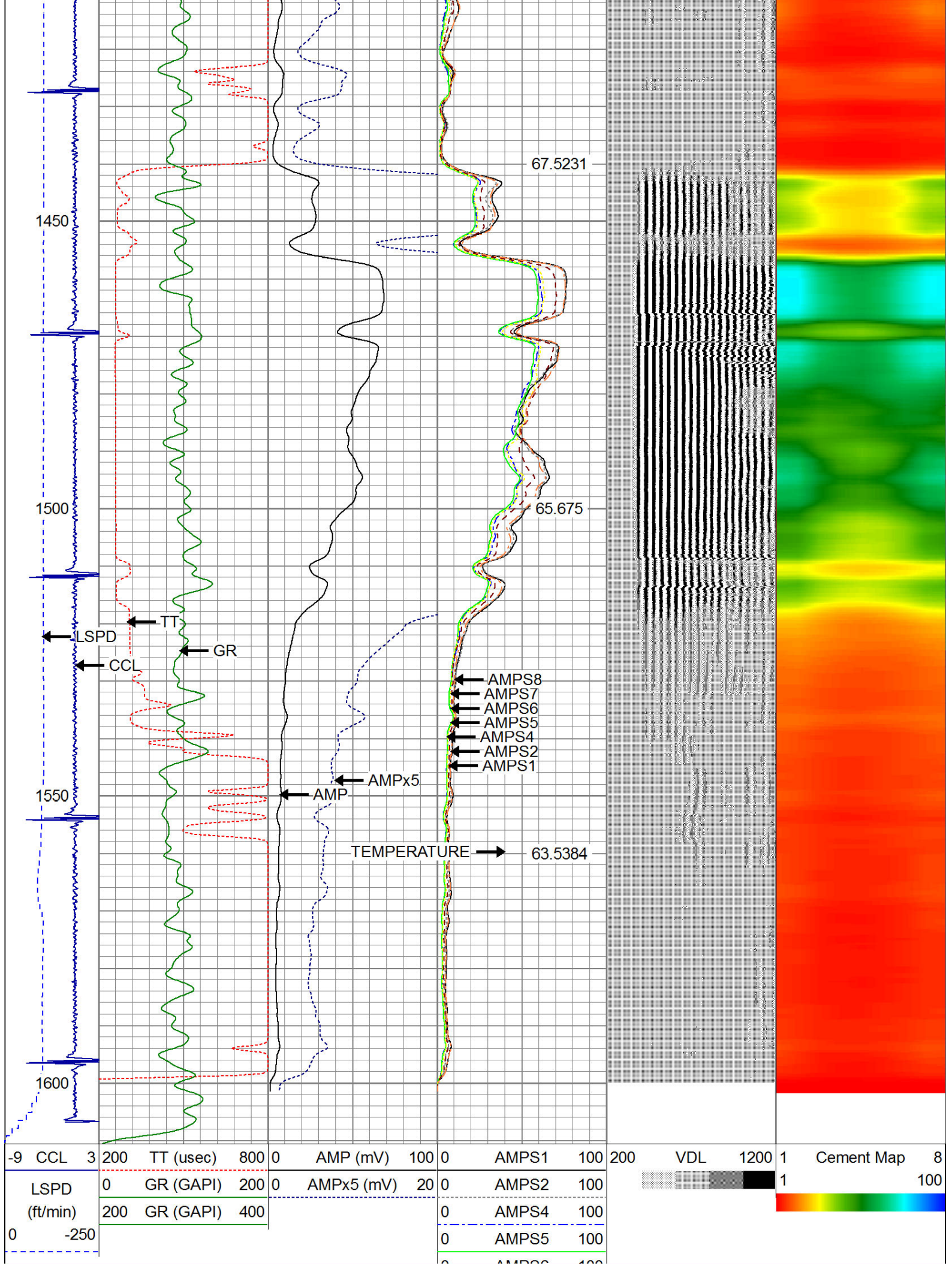












0	AMPS6	100
0	AMPS7	100
0	AMPS8	100

IntTemp (degF)



WARRIOR
ENERGY SERVICES

Company	Kerr McGee Oil & Gas
Well	CANNON 32-3
Field	Wattenberg
County	Weld
State	CO