

Fiscus Federal LD15-77-1HN

TVD
1":100'

Company: Noble Energy Inc

Well Name: Fiscus Federal LD15-77-1HN

API: 05-123-37369

Rig Id: Precision 828

State: Colorado

County/Parish: Weld

Country: USA

Survey Company: Ensign Directional

Job number: 05-123-37369

Company Man 1 Gary Stapleton

Directional Driller 1 Tyler Batchelder

Directional Driller 2 Matt Mason

MWD 1 Mark Bigler

MWD 2 Derek Saykally

Log measurements: Gamma

Depth measured from: KB

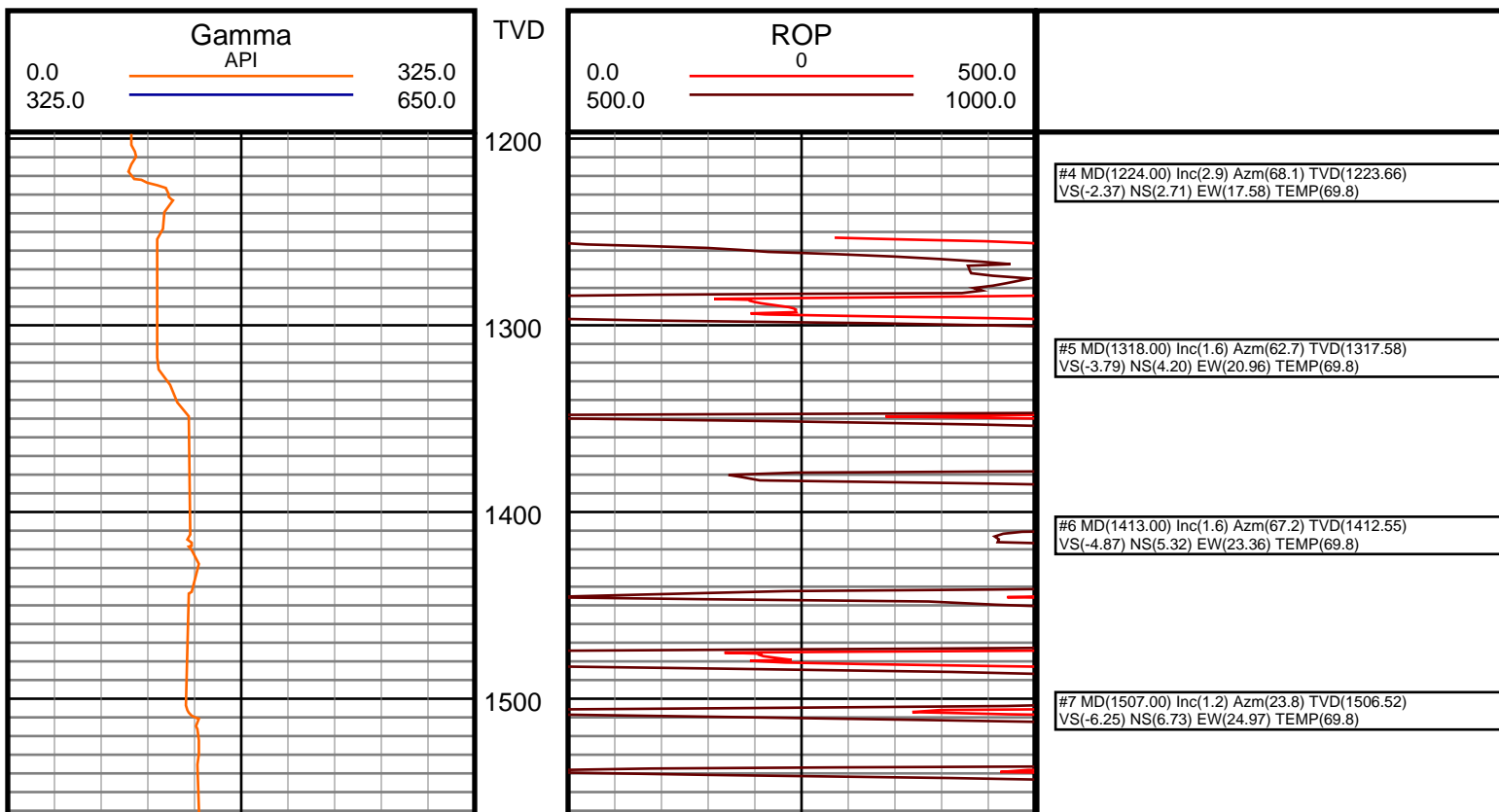
Maximum temperature:

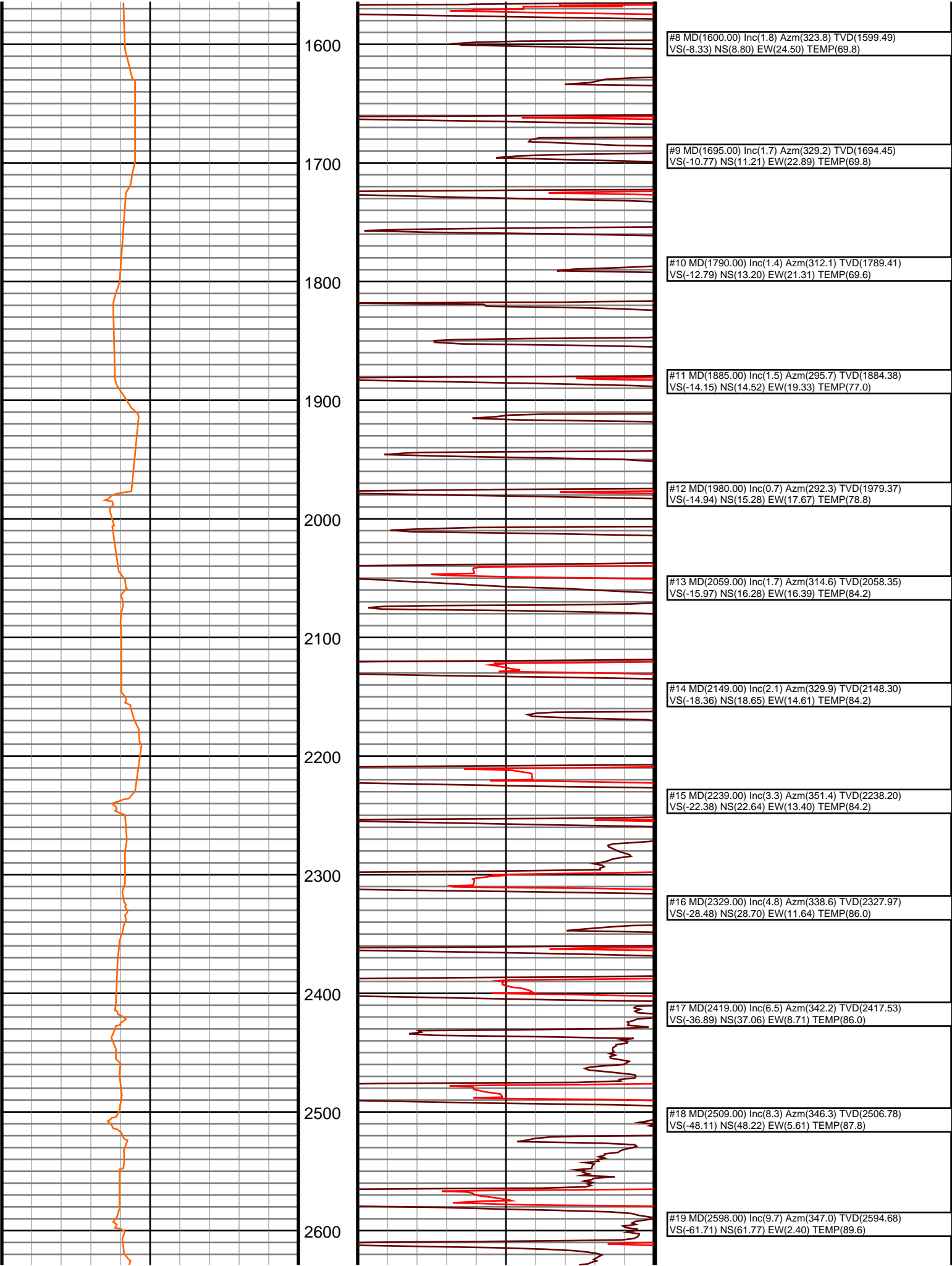
Depth Date
Start: 1201 ft 11/4/2014
End: 9990 ft 11/9/2014

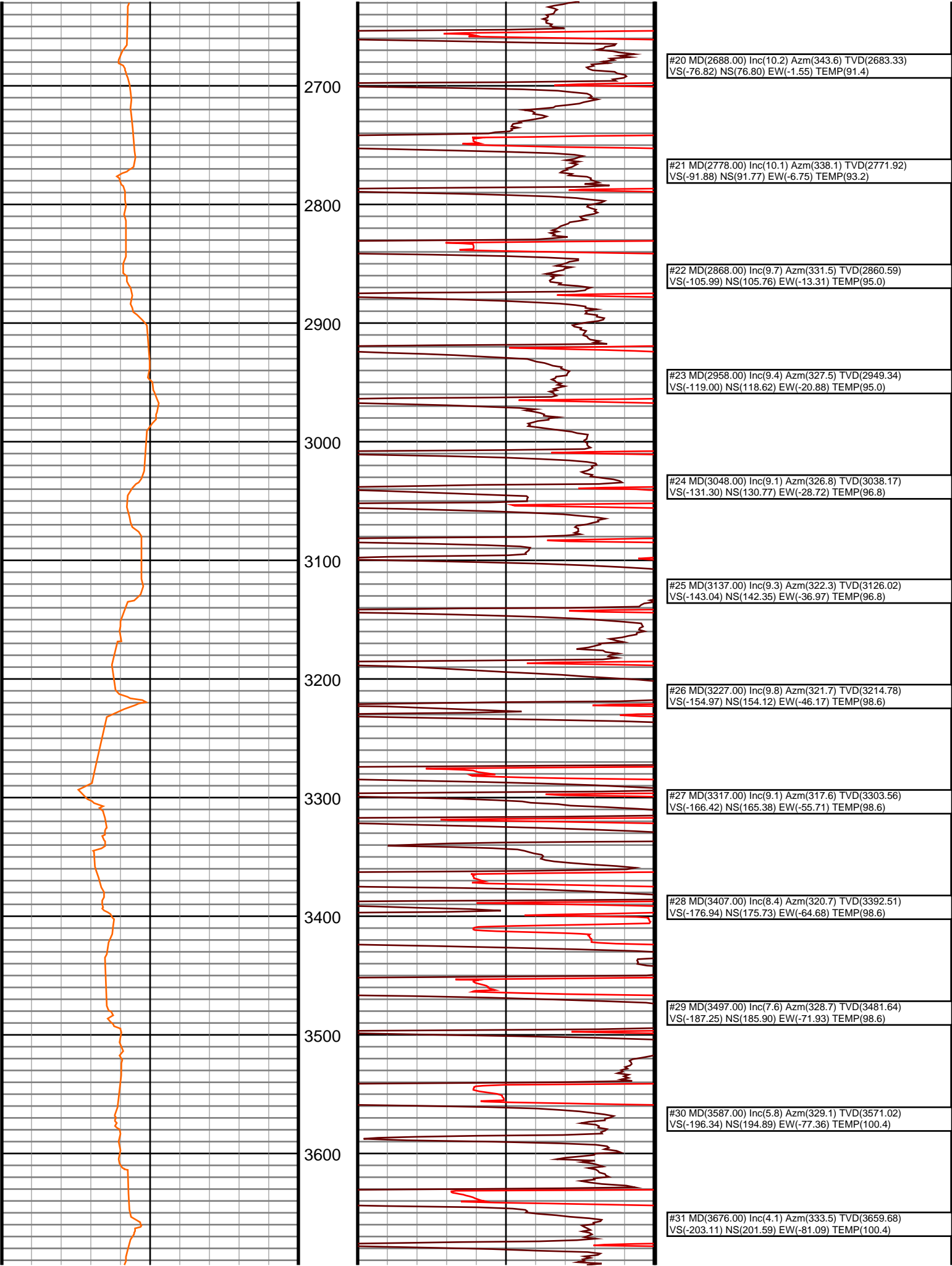
Casing	Depth	Size	Mud Type: Water Based	Elevations
Surface:	1215	9.625	Density:	KB: 4733
Intermediate:	6069	7	Viscosity:	GL: 4717
			Rm:	DF: 4733
			Rmf:	
			Rmc:	

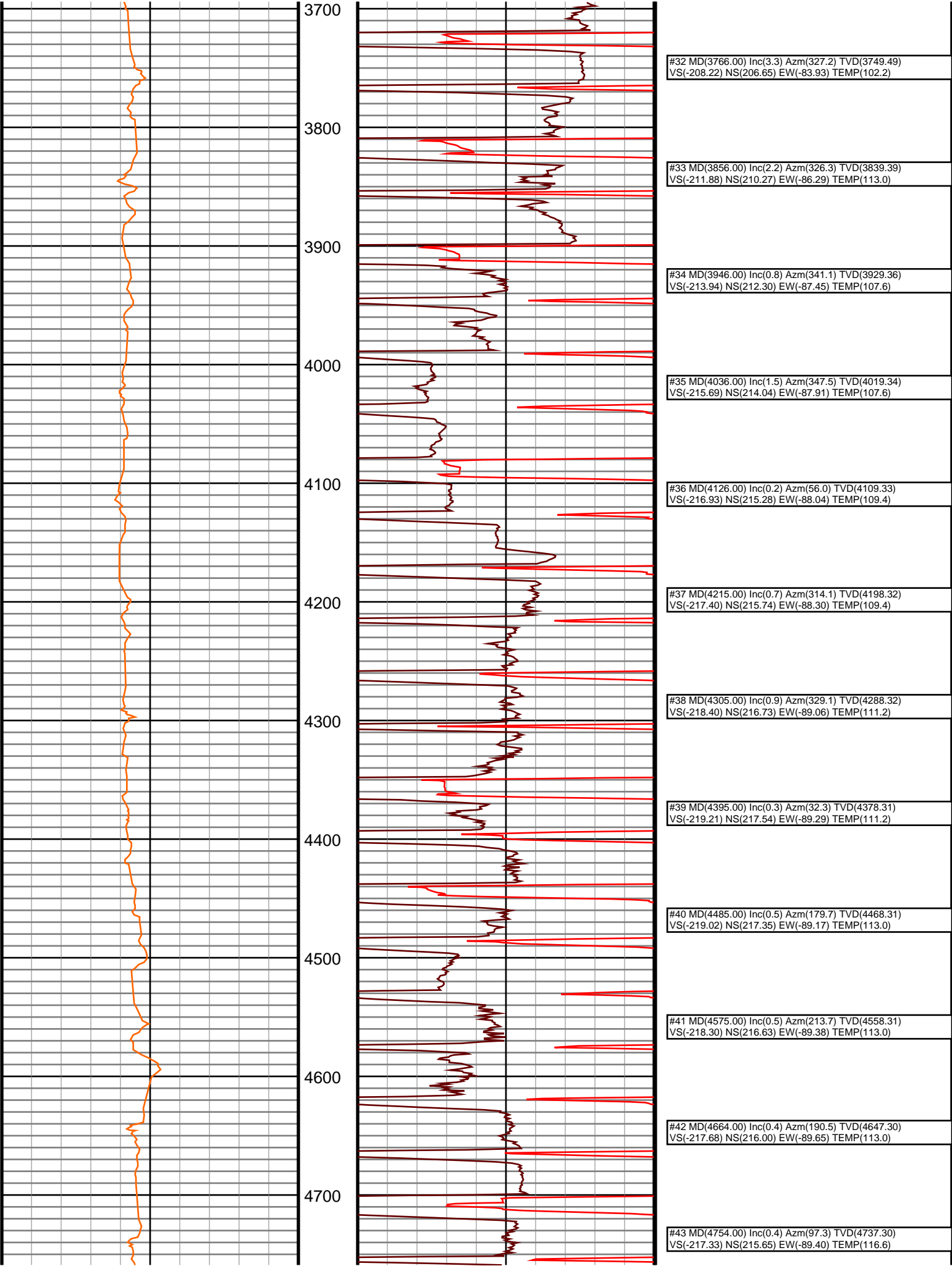
Run	Bit Size	Offsets	Gamma Survey	Start	End	Start	End	Dates
1	8 3/4	61.15	56.15	1201	6074	11/4/2014	11/5/2014	
2	6 1/8	61.25	56.25	6074	9990	11/7/2014	11/9/2014	
3								
4								
5								
6								
7								
8								
9								
10								

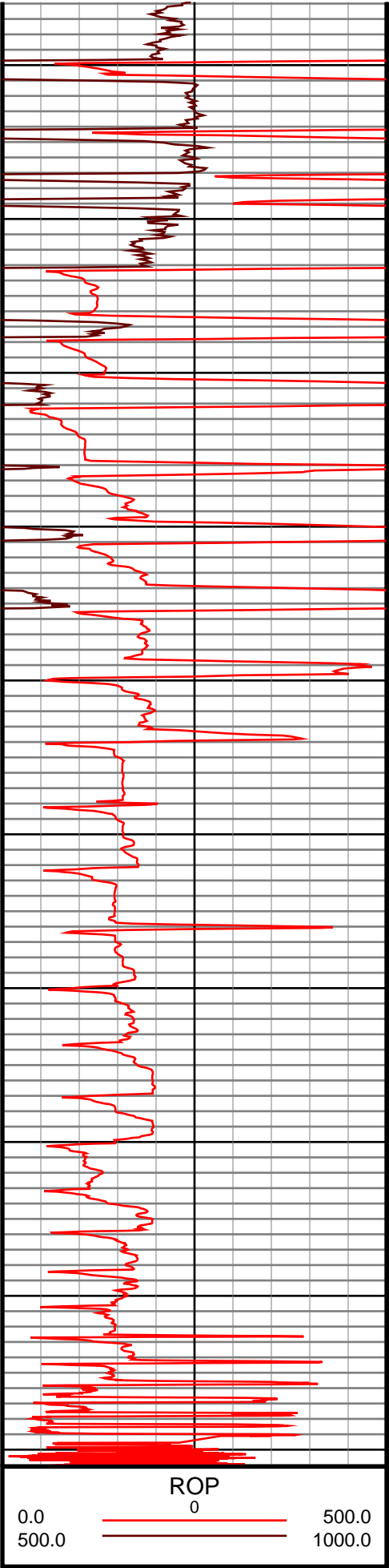
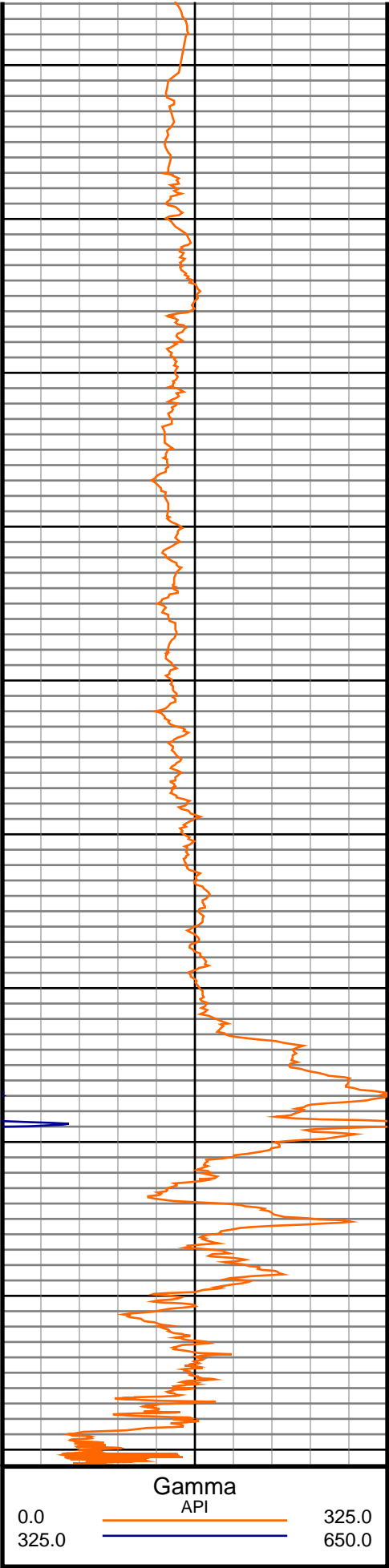
Ensign Directional uses its best efforts to provide its customers with accurate information and interpretations in conjunction with services performed but will not be held liable or responsible for the accuracy of such information or interpretation.











#44 MD(4844.00) Inc(1.1) Azm(145.0) TVD(4827.30) VS(-216.56) NS(214.90) EW(-88.59) TEMP(116.6)
#45 MD(4889.00) Inc(1.3) Azm(153.3) TVD(4872.29) VS(-215.74) NS(214.09) EW(-88.11) TEMP(116.6)
#46 MD(4934.00) Inc(1.7) Azm(145.9) TVD(4917.27) VS(-214.72) NS(213.08) EW(-87.51) TEMP(116.6)
#47 MD(4979.00) Inc(3.8) Azm(149.8) TVD(4962.22) VS(-212.86) NS(211.24) EW(-86.39) TEMP(116.6)
#48 MD(5024.00) Inc(6.0) Azm(162.5) TVD(5007.05) VS(-209.30) NS(207.71) EW(-84.93) TEMP(118.4)
#49 MD(5069.00) Inc(9.3) Azm(166.5) TVD(5051.64) VS(-203.49) NS(201.93) EW(-83.37) TEMP(120.2)
#50 MD(5114.00) Inc(11.5) Azm(173.5) TVD(5095.90) VS(-195.47) NS(193.93) EW(-82.02) TEMP(120.2)
#51 MD(5158.00) Inc(13.8) Azm(180.3) TVD(5138.83) VS(-185.86) NS(184.33) EW(-81.55) TEMP(123.8)
#52 MD(5203.00) Inc(16.4) Azm(183.4) TVD(5182.28) VS(-174.16) NS(172.62) EW(-81.95) TEMP(123.8)
#53 MD(5248.00) Inc(18.9) Azm(182.6) TVD(5225.16) VS(-160.55) NS(158.99) EW(-82.66) TEMP(123.8)
#54 MD(5293.00) Inc(22.2) Azm(177.8) TVD(5267.29) VS(-144.77) NS(143.21) EW(-82.66) TEMP(123.8)
#55 MD(5338.00) Inc(25.1) Azm(174.9) TVD(5308.51) VS(-126.75) NS(125.20) EW(-81.49) TEMP(123.8)
#56 MD(5383.00) Inc(29.5) Azm(171.2) TVD(5348.49) VS(-106.23) NS(104.74) EW(-78.94) TEMP(123.8)
#57 MD(5428.00) Inc(32.9) Azm(167.3) TVD(5386.98) VS(-83.27) NS(81.86) EW(-74.56) TEMP(123.8)
#58 MD(5473.00) Inc(37.0) Azm(163.4) TVD(5423.86) VS(-58.24) NS(56.94) EW(-68.00) TEMP(123.8)
#59 MD(5518.00) Inc(40.8) Azm(166.1) TVD(5458.88) VS(-30.84) NS(29.68) EW(-60.60) TEMP(123.8)
#60 MD(5562.00) Inc(45.5) Azm(167.4) TVD(5490.97) VS(-1.43) NS(0.40) EW(-53.72) TEMP(123.8)
#61 MD(5607.00) Inc(49.8) Azm(168.0) TVD(5521.28) VS(31.19) NS(-32.09) EW(-46.64) TEMP(123.8)
#62 MD(5652.00) Inc(53.3) Azm(172.3) TVD(5549.26) VS(66.00) NS(-66.80) EW(-40.65) TEMP(123.8)
#63 MD(5697.00) Inc(56.3) Azm(177.4) TVD(5575.21) VS(102.66) NS(-103.40) EW(-37.38) TEMP(141.8)
#64 MD(5742.00) Inc(59.3) Azm(182.6) TVD(5599.20) VS(140.71) NS(-141.45) EW(-37.41) TEMP(141.8)
#65 MD(5787.00) Inc(64.0) Azm(181.8) TVD(5620.56) VS(180.23) NS(-181.01) EW(-38.92) TEMP(143.6)
#67 MD(5877.00) Inc(72.5) Azm(181.8) TVD(5653.70) VS(263.73) NS(-264.57) EW(-41.33) TEMP(145.4)
#69 MD(5966.00) Inc(78.8) Azm(183.0) TVD(5675.61) VS(349.79) NS(-350.71) EW(-44.80) TEMP(145.4)
#113 MD(9932.00) Inc(88.7) Azm(179.3) TVD(5705.68) VS(4312.83) NS(-4312.22) EW(73.12) TEMP(192.2)