

LEGEND

- ◆ ~ FOUND ORIGINAL STONE
- ~ FOUND GLO BRASS CAP ON STEEL POST
- ⊕ ~ FOUND REBAR AND CAP BY LS15710
- ~ FOUND No.6 REBAR WITH A 2 1/2" ALUMINUM CAP, LS24963
- ~ WELL FEATURE
- (M) ~ MEASURED IN FIELD
- L ~ 90° SYMBOL
- WC ~ WITNESS CORNER

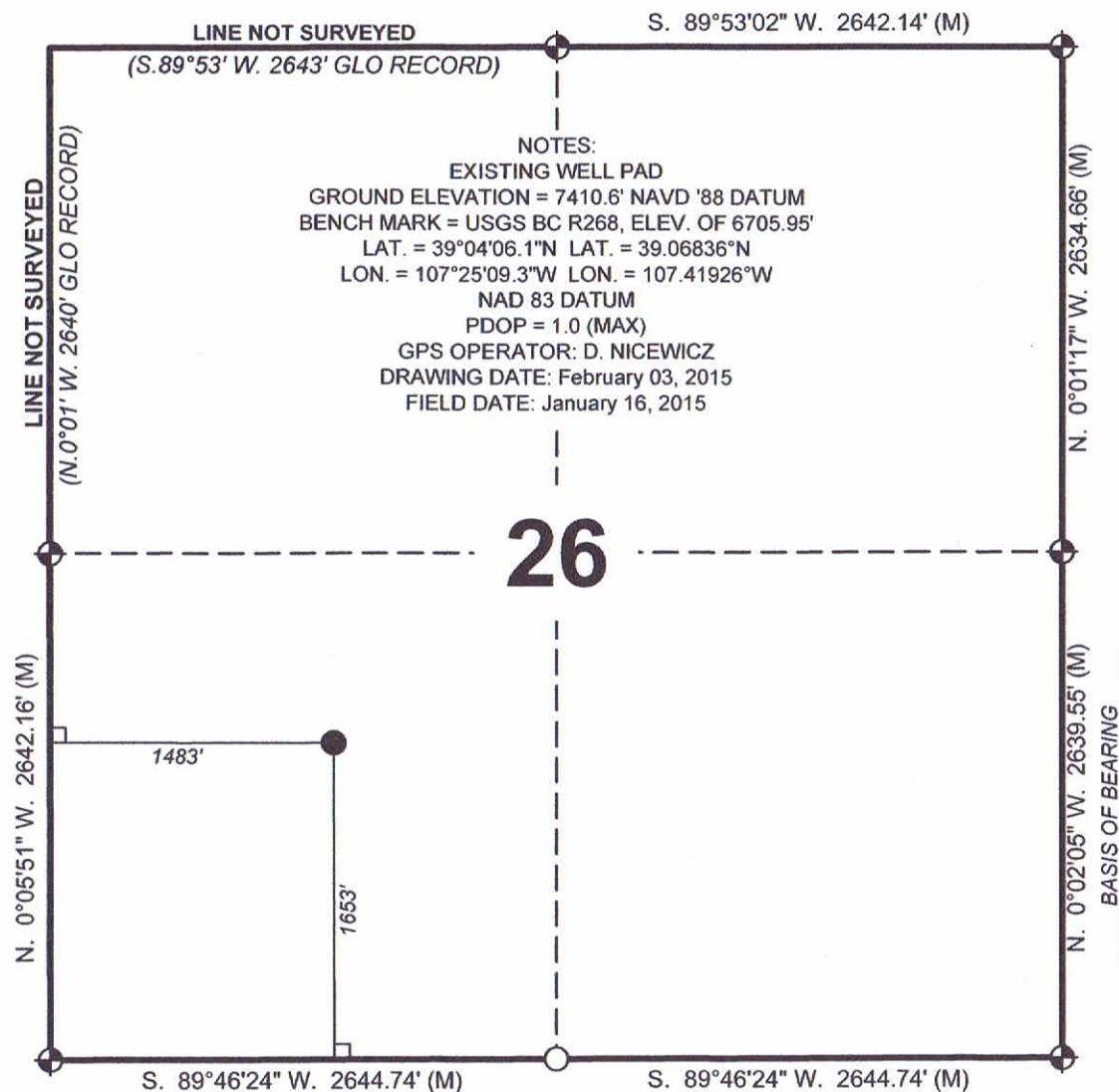
BASIS OF BEARING:

THE LINE FROM THE SE CORNER TO THE E 1/4 CORNER OF SECTION 26, TOWNSHIP 11 SOUTH, RANGE 90 WEST, 6TH P.M., WAS ASSUMED TO BEAR N. 0°02'05" W. AS MONUMENTED AND SHOWN HEREON.

CERTIFICATE OF SURVEY:

I, David G. Nicewicz, a Registered Land Surveyor in the State of Colorado, do hereby certify that the survey represented by this plat was made under my direction and supervision, and that this plat accurately represents this survey.

David G. Nicewicz P.L.S. No. 24963
(for and on behalf of AECOM)



GAS WELL LOCATION PLAT

HUGHES 11-90-26 #3 SURFACE LOCATION

Located in the SW 1/4 of Section 26,
Township 11 South, Range 90 West, 6th P.M.,
Gunnison County, Colorado

SURVEYED BY:
DGN

DWG DATE:
02/03/15

David G. Nicewicz, PLS

DRAFTED BY:
MLD

SCALE:
1" = 1000'

cell: (720) 456-1104
david.nicewicz@urs.com

AECOM
804 Colorado Ave, Suite 201
Glenwood Springs Co 81610

JOB NO.: 22244264.40100

SHEET NO. 1 of 1

AECOM OF GLENWOOD SPRINGS COLORADO, has in accordance with a request from ERIC SANFORD, for SG INTERESTS I, LTD, determined the location of HUGHES 11-90-26 #3 SURFACE LOCATION to be 1653 FSL & 1483 FWL Section 26, Township 11 South, Range 90 West, of the Sixth Principal Meridian, Gunnison County, Colorado.