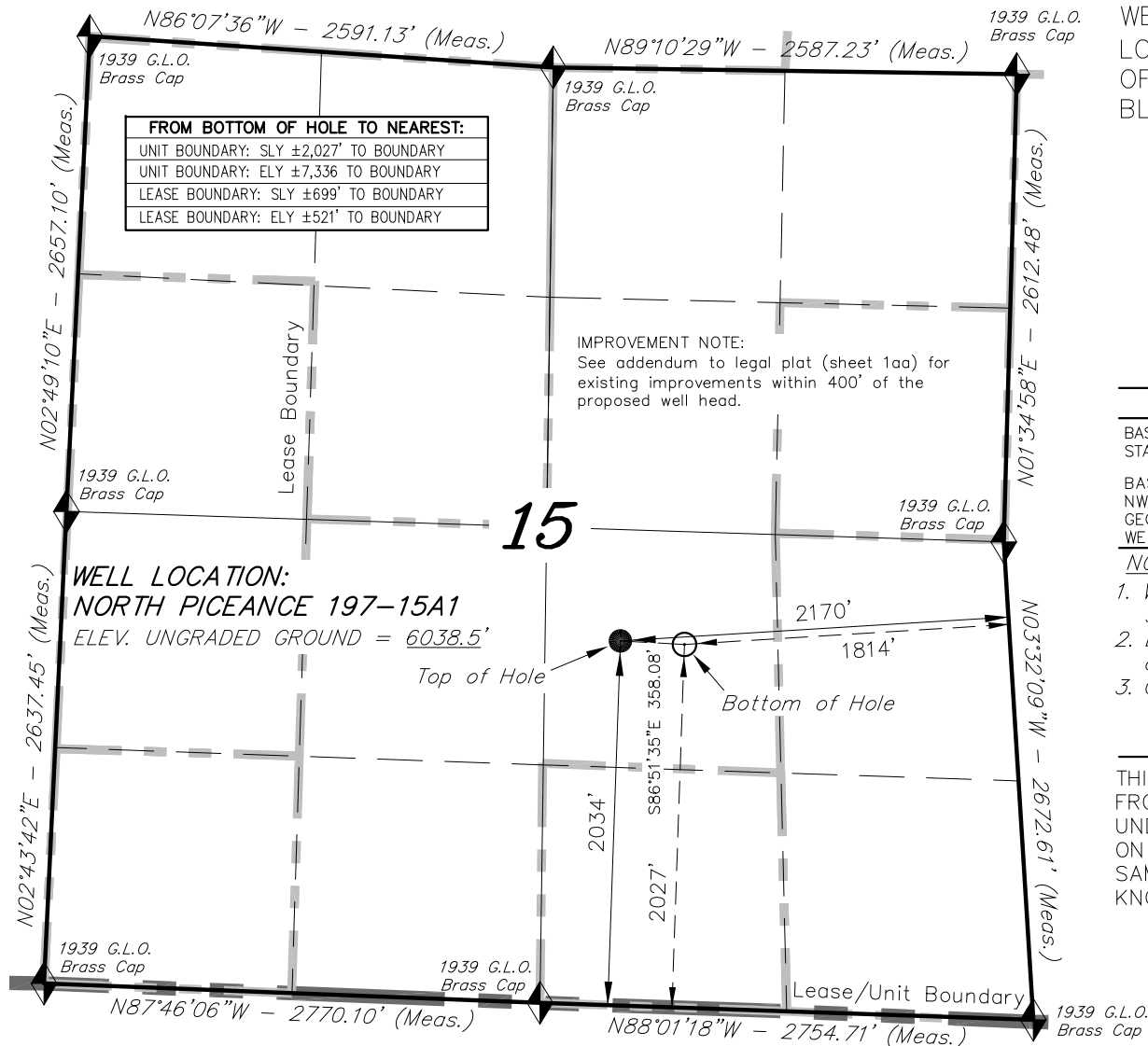
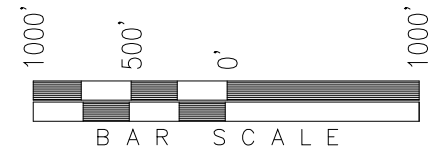


T1S, R97W, 6th P.M.

XTO ENERGY INC.



WELL LOCATION, NORTH PICEANCE 197-15A1, LOCATED AS SHOWN IN THE NW 1/4 SE 1/4 OF SECTION 15, T1S, R97W, 6th P.M., RIO BLANCO COUNTY, COLORADO.



◆ = SECTION CORNERS LOCATED

BASIS OF BEARINGS & BASIS OF ELEVATION

BASIS OF BEARINGS IS A LINE BETWEEN MAGNOLIA & MEYERS TRIANGULATION STATION GRID COORDINATES WHICH IS ASSUMED TO BEAR S82°36'07"E.

BASIS OF ELEVATIONS IS MAGNOLIA TRIANGULATION STATION LOCATED IN THE NW 1/4 OF SECTION 9, T2S, R96W, 6th P.M. REPORTED FROM THE NATIONAL GEODETIC SURVEY AS BEING 7529 FEET (NAVD 88). WE MEASURED IT TO BE 7526.2'

NOTES:

1. Well footages are measured at right angles to the Section Lines.
2. Bearings are based on Global Positioning Satellite observations.
3. G.P.S. Operator: Q. MILLER, (PDOP) = 2.9

THIS IS TO CERTIFY THAT THE ABOVE PLAT WAS PREPARED FROM FIELD NOTES OF ACTUAL SURVEY MADE BY ME OR UNDER MY SUPERVISION, THE LOCATION HAS BEEN MARKED ON THE GROUND AS SHOWN ON THIS PLAT, AND THAT THE SAME ARE TRUE AND CORRECT TO THE BEST OF MY KNOWLEDGE AND BELIEF.

Surveyor Signature
 REGISTERED LAND SURVEYOR
 REGISTRATION NO. 13012
 STATE OF COLORADO

CO-NORTH NAD 83 (SURFACE LOCATION)		CO-NORTH NAD 83 (BOTTOM HOLE)		FROM SURFACE LOCATION TO NEAREST:	
LATITUDE = 39°57'46.28" (39.962856)		LATITUDE = 39°57'46.20" (39.962833)		TOWN/COMMUNITY: NE 19.4 MILES TO MEEKER	
LONGITUDE = 108°16'00.05" (108.266680)		LONGITUDE = 108°15'55.45" (108.265403)		UNIT BOUNDARY: SLY ±2,034' TO BOUNDARY	
STATE PLANE COORDINATES		STATE PLANE COORDINATES		UNIT BOUNDARY: ELY ±7,681 TO BOUNDARY	
N: = 1241413.525	E: = 2224608.349	N: = 1241393.910	E: = 2224965.760	LEASE BOUNDARY: SLY ±706' TO BOUNDARY	
CO-NORTH NAD 27 (SURFACE LOCATION)		CO-NORTH NAD 27 (BOTTOM HOLE)		LEASE BOUNDARY: ELY ±878' TO BOUNDARY	
LATITUDE = 39°57'46.38" (39.962884)		LATITUDE = 39°57'46.30" (39.962861)		EXISTING WELL: NELY ±3,866' TO 14-1-97	
LONGITUDE = 108°15'57.74" (108.266038)		LONGITUDE = 108°15'53.14" (108.264761)		INDIAN WELLS FED	
STATE PLANE COORDINATES		STATE PLANE COORDINATES			
N: = 241414.292	E: = 1224768.230	N: = 241394.680	E: = 1225125.638		

TRI STATE LAND SURVEYING & CONSULTING

180 NORTH VERNAL AVE. - VERNAL, UTAH 84078
 (435) 781-2501

DATE SURVEYED: 12-02-14	SURVEYED BY: Q.M.	SHEET 1a
DATE DRAWN: 12-10-14	DRAWN BY: L.C.S.	
REVISED:	SCALE: 1" = 1000'	