

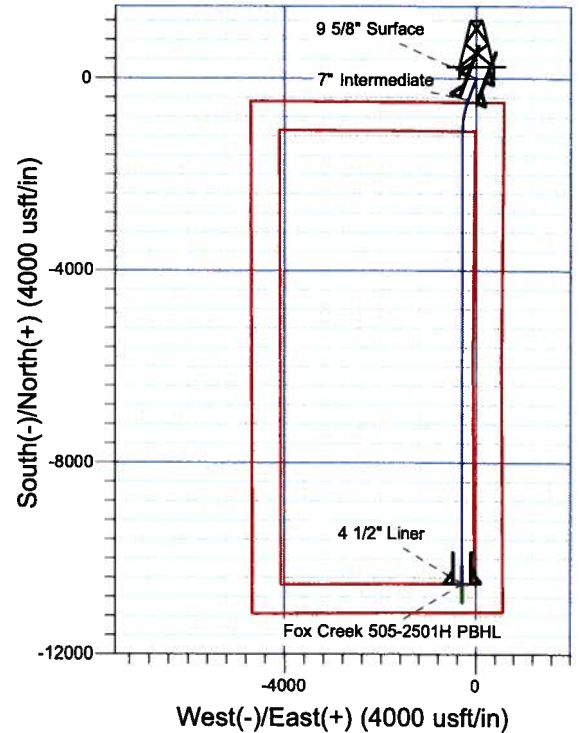
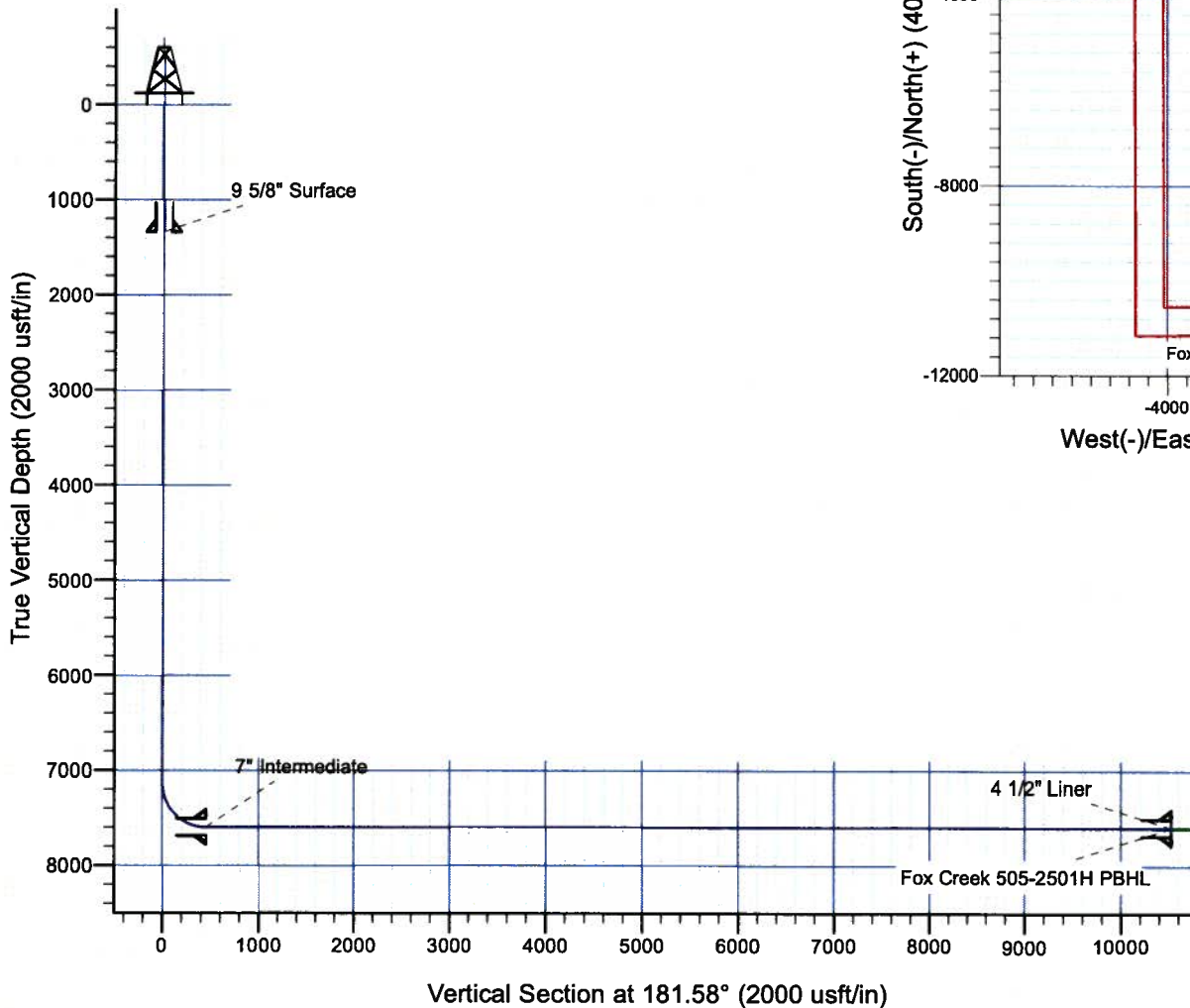


Fox Creek 505-2501H
 Section 25-T12N-R63W
 Weld County, CO

Surface Location

NAD 1927 (NADCON CONUS) Colorado North 501
 Ground Elevation: 5391.0 RKB @ 5416.0usft (KB GL+25')
 Northing Easting Latitude Longitude
 599921.49 2311130.62 40° 58' 29.086 N 104° 22' 23.964 W

Project: DJ - Hereford Ranch
 Site: Fox Creek FC25 SESE Pad
 Well: Fox Creek 505-2501H
 Plan: APD Plan (Plat Cert 11/14/14)



SECTION DETAILS

Sec	MD	Inc	Azi	TVD	+N/-S	+E/-W	Dleg	TFace	VSect	Target
1	0.0	0.00	0.00	0.0	0.0	0.0	0.00	0.00	0.0	
2	7120.5	0.00	0.00	7120.5	0.0	0.0	0.00	0.00	0.0	
3	7870.5	90.00	200.60	7598.0	-446.9	-168.0	12.00	200.60	451.4	
4	8557.2	90.00	180.00	7598.0	-1118.9	-290.1	3.00	-90.00	1126.5	Fox Creek 505-2501H PBHL
5	17958.6	90.00	180.00	7598.0	-10520.4	-290.0	0.00	0.00	10524.4	Fox Creek 505-2501H PBHL

TARGET DETAILS

Name	TVD	+N/-S	+E/-W	Northing	Easting	Latitude	Longitude	Shape
Fox Creek 505-2501H PBHL	7598.0	-10520.4	-290.0	589398.30	2310974.35	40° 56' 45.140 N	104° 22' 27.742 W	Point

Denver Division- Colorado

DJ - Hereford Ranch

Fox Creek FC25 SESE Pad

Fox Creek 505-2501H

OH

Plan: APD Plan (Plat Cert 11/14/14)

Standard Planning Report

27 January, 2015

EOG Resources, Inc.

Planning Report

Database:	EDM_DENVER	Local Co-ordinate Reference:	Well Fox Creek 505-2501H
Company:	Denver Division- Colorado	TVD Reference:	RKB @ 5416.0usft (KB GL+25')
Project:	DJ - Hereford Ranch	MD Reference:	RKB @ 5416.0usft (KB GL+25')
Site:	Fox Creek FC25 SESE Pad	North Reference:	True
Well:	Fox Creek 505-2501H	Survey Calculation Method:	Minimum Curvature
Wellbore:	OH		
Design:	APD Plan (Plat Cert 11/14/14)		

Project	DJ - Hereford Ranch, Weld County		
Map System:	US State Plane 1927 (Exact solution)	System Datum:	Mean Sea Level
Geo Datum:	NAD 1927 (NADCON CONUS)		
Map Zone:	Colorado North 501		

Site	Fox Creek FC25 SESE Pad		
Site Position:		Northing:	599,900.00 usft
From:	Map	Easting:	2,311,200.00 usft
Position Uncertainty:	0.0 usft	Slot Radius:	13-3/16 "
		Latitude:	40° 58' 28.865 N
		Longitude:	104° 22' 23.063 W
		Grid Convergence:	0.73 °

Well	Fox Creek 505-2501H		
Well Position	+N/-S	22.4 usft	Northing:
	+E/-W	-69.1 usft	Easting:
Position Uncertainty		0.0 usft	Wellhead Elevation:
			Latitude:
			Longitude:
			Ground Level:

Wellbore	OH		
Magnetics	Model Name	Sample Date	Declination
			(°)
	IGRF200510	11/20/2014	8.17
			Dip Angle
			(°)
			67.46
			Field Strength
			(nT)
			53,130

Design	APD Plan (Plat Cert 11/14/14)		
Audit Notes:			
Version:	Phase:	PROTOTYPE	Tie On Depth:
			0.0
Vertical Section:	Depth From (TVD)	+N/-S	+E/-W
	(usft)	(usft)	(usft)
	0.0	0.0	0.0
			Direction
			(°)
			181.58

Plan Sections										
Measured	Inclination	Azimuth	Vertical	+N/-S	+E/-W	Dogleg	Build	Turn	TFO	Target
Depth	(°)	(°)	Depth	(usft)	(usft)	Rate	Rate	Rate	(°)	
(usft)			(usft)			(°/100usft)	(°/100usft)	(°/100usft)		
0.0	0.00	0.00	0.0	0.0	0.0	0.00	0.00	0.00	0.00	
7,120.5	0.00	0.00	7,120.5	0.0	0.0	0.00	0.00	0.00	0.00	
7,870.5	90.00	200.60	7,598.0	-446.9	-168.0	12.00	12.00	0.00	200.60	
8,557.2	90.00	180.00	7,598.0	-1,118.9	-290.1	3.00	0.00	-3.00	-90.00	Fox Creek 505-2501H
17,958.6	90.00	180.00	7,598.0	-10,520.4	-290.0	0.00	0.00	0.00	0.00	Fox Creek 505-2501H

EOG Resources, Inc.

Planning Report

Database: EDM_DENVER
Company: Denver Division- Colorado
Project: DJ - Hereford Ranch
Site: Fox Creek FC25 SESE Pad
Well: Fox Creek 505-2501H
Wellbore: OH
Design: APD Plan (Plat Cert 11/14/14)

Local Co-ordinate Reference:

TVD Reference:

MD Reference:

North Reference:

Survey Calculation Method:

Well Fox Creek 505-2501H
 RKB @ 5416.0usft (KB GL+25')
 RKB @ 5416.0usft (KB GL+25')
 True
 Minimum Curvature

Planned Survey

Measured Depth (usft)	Inclination (°)	Azimuth (°)	Vertical Depth (usft)	+N/-S (usft)	+E/-W (usft)	Vertical Section (usft)	Dogleg Rate (°/100usft)	Build Rate (°/100usft)	Turn Rate (°/100usft)
0.0	0.00	0.00	0.0	0.0	0.0	0.0	0.00	0.00	0.00
100.0	0.00	0.00	100.0	0.0	0.0	0.0	0.00	0.00	0.00
200.0	0.00	0.00	200.0	0.0	0.0	0.0	0.00	0.00	0.00
300.0	0.00	0.00	300.0	0.0	0.0	0.0	0.00	0.00	0.00
400.0	0.00	0.00	400.0	0.0	0.0	0.0	0.00	0.00	0.00
500.0	0.00	0.00	500.0	0.0	0.0	0.0	0.00	0.00	0.00
600.0	0.00	0.00	600.0	0.0	0.0	0.0	0.00	0.00	0.00
700.0	0.00	0.00	700.0	0.0	0.0	0.0	0.00	0.00	0.00
800.0	0.00	0.00	800.0	0.0	0.0	0.0	0.00	0.00	0.00
900.0	0.00	0.00	900.0	0.0	0.0	0.0	0.00	0.00	0.00
1,000.0	0.00	0.00	1,000.0	0.0	0.0	0.0	0.00	0.00	0.00
1,100.0	0.00	0.00	1,100.0	0.0	0.0	0.0	0.00	0.00	0.00
1,200.0	0.00	0.00	1,200.0	0.0	0.0	0.0	0.00	0.00	0.00
1,300.0	0.00	0.00	1,300.0	0.0	0.0	0.0	0.00	0.00	0.00
1,338.0	0.00	0.00	1,338.0	0.0	0.0	0.0	0.00	0.00	0.00
9 5/8" Surface									
1,400.0	0.00	0.00	1,400.0	0.0	0.0	0.0	0.00	0.00	0.00
1,500.0	0.00	0.00	1,500.0	0.0	0.0	0.0	0.00	0.00	0.00
1,600.0	0.00	0.00	1,600.0	0.0	0.0	0.0	0.00	0.00	0.00
1,700.0	0.00	0.00	1,700.0	0.0	0.0	0.0	0.00	0.00	0.00
1,800.0	0.00	0.00	1,800.0	0.0	0.0	0.0	0.00	0.00	0.00
1,900.0	0.00	0.00	1,900.0	0.0	0.0	0.0	0.00	0.00	0.00
2,000.0	0.00	0.00	2,000.0	0.0	0.0	0.0	0.00	0.00	0.00
2,100.0	0.00	0.00	2,100.0	0.0	0.0	0.0	0.00	0.00	0.00
2,200.0	0.00	0.00	2,200.0	0.0	0.0	0.0	0.00	0.00	0.00
2,300.0	0.00	0.00	2,300.0	0.0	0.0	0.0	0.00	0.00	0.00
2,400.0	0.00	0.00	2,400.0	0.0	0.0	0.0	0.00	0.00	0.00
2,500.0	0.00	0.00	2,500.0	0.0	0.0	0.0	0.00	0.00	0.00
2,600.0	0.00	0.00	2,600.0	0.0	0.0	0.0	0.00	0.00	0.00
2,700.0	0.00	0.00	2,700.0	0.0	0.0	0.0	0.00	0.00	0.00
2,800.0	0.00	0.00	2,800.0	0.0	0.0	0.0	0.00	0.00	0.00
2,900.0	0.00	0.00	2,900.0	0.0	0.0	0.0	0.00	0.00	0.00
3,000.0	0.00	0.00	3,000.0	0.0	0.0	0.0	0.00	0.00	0.00
3,100.0	0.00	0.00	3,100.0	0.0	0.0	0.0	0.00	0.00	0.00
3,200.0	0.00	0.00	3,200.0	0.0	0.0	0.0	0.00	0.00	0.00
3,300.0	0.00	0.00	3,300.0	0.0	0.0	0.0	0.00	0.00	0.00
3,400.0	0.00	0.00	3,400.0	0.0	0.0	0.0	0.00	0.00	0.00
3,500.0	0.00	0.00	3,500.0	0.0	0.0	0.0	0.00	0.00	0.00
3,600.0	0.00	0.00	3,600.0	0.0	0.0	0.0	0.00	0.00	0.00
3,700.0	0.00	0.00	3,700.0	0.0	0.0	0.0	0.00	0.00	0.00
3,800.0	0.00	0.00	3,800.0	0.0	0.0	0.0	0.00	0.00	0.00
3,900.0	0.00	0.00	3,900.0	0.0	0.0	0.0	0.00	0.00	0.00
4,000.0	0.00	0.00	4,000.0	0.0	0.0	0.0	0.00	0.00	0.00
4,100.0	0.00	0.00	4,100.0	0.0	0.0	0.0	0.00	0.00	0.00
4,200.0	0.00	0.00	4,200.0	0.0	0.0	0.0	0.00	0.00	0.00
4,300.0	0.00	0.00	4,300.0	0.0	0.0	0.0	0.00	0.00	0.00
4,400.0	0.00	0.00	4,400.0	0.0	0.0	0.0	0.00	0.00	0.00
4,500.0	0.00	0.00	4,500.0	0.0	0.0	0.0	0.00	0.00	0.00
4,600.0	0.00	0.00	4,600.0	0.0	0.0	0.0	0.00	0.00	0.00
4,700.0	0.00	0.00	4,700.0	0.0	0.0	0.0	0.00	0.00	0.00
4,800.0	0.00	0.00	4,800.0	0.0	0.0	0.0	0.00	0.00	0.00
4,900.0	0.00	0.00	4,900.0	0.0	0.0	0.0	0.00	0.00	0.00
5,000.0	0.00	0.00	5,000.0	0.0	0.0	0.0	0.00	0.00	0.00
5,100.0	0.00	0.00	5,100.0	0.0	0.0	0.0	0.00	0.00	0.00

EOG Resources, Inc.
Planning Report

Database:	EDM_DENVER	Local Co-ordinate Reference:	Well Fox Creek 505-2501H
Company:	Denver Division- Colorado	TVD Reference:	RKB @ 5416.0usft (KB GL+25')
Project:	DJ - Hereford Ranch	MD Reference:	RKB @ 5416.0usft (KB GL+25')
Site:	Fox Creek FC25 SESE Pad	North Reference:	True
Well:	Fox Creek 505-2501H	Survey Calculation Method:	Minimum Curvature
Wellbore:	OH		
Design:	APD Plan (Plat Cert 11/14/14)		

Planned Survey

Measured Depth (usft)	Inclination (°)	Azimuth (°)	Vertical Depth (usft)	+N/-S (usft)	+E/-W (usft)	Vertical Section (usft)	Dogleg Rate (°/100usft)	Build Rate (°/100usft)	Turn Rate (°/100usft)
5,200.0	0.00	0.00	5,200.0	0.0	0.0	0.0	0.00	0.00	0.00
5,300.0	0.00	0.00	5,300.0	0.0	0.0	0.0	0.00	0.00	0.00
5,400.0	0.00	0.00	5,400.0	0.0	0.0	0.0	0.00	0.00	0.00
5,500.0	0.00	0.00	5,500.0	0.0	0.0	0.0	0.00	0.00	0.00
5,600.0	0.00	0.00	5,600.0	0.0	0.0	0.0	0.00	0.00	0.00
5,700.0	0.00	0.00	5,700.0	0.0	0.0	0.0	0.00	0.00	0.00
5,800.0	0.00	0.00	5,800.0	0.0	0.0	0.0	0.00	0.00	0.00
5,900.0	0.00	0.00	5,900.0	0.0	0.0	0.0	0.00	0.00	0.00
6,000.0	0.00	0.00	6,000.0	0.0	0.0	0.0	0.00	0.00	0.00
6,100.0	0.00	0.00	6,100.0	0.0	0.0	0.0	0.00	0.00	0.00
6,200.0	0.00	0.00	6,200.0	0.0	0.0	0.0	0.00	0.00	0.00
6,300.0	0.00	0.00	6,300.0	0.0	0.0	0.0	0.00	0.00	0.00
6,400.0	0.00	0.00	6,400.0	0.0	0.0	0.0	0.00	0.00	0.00
6,500.0	0.00	0.00	6,500.0	0.0	0.0	0.0	0.00	0.00	0.00
6,600.0	0.00	0.00	6,600.0	0.0	0.0	0.0	0.00	0.00	0.00
6,700.0	0.00	0.00	6,700.0	0.0	0.0	0.0	0.00	0.00	0.00
6,800.0	0.00	0.00	6,800.0	0.0	0.0	0.0	0.00	0.00	0.00
6,900.0	0.00	0.00	6,900.0	0.0	0.0	0.0	0.00	0.00	0.00
7,000.0	0.00	0.00	7,000.0	0.0	0.0	0.0	0.00	0.00	0.00
7,100.0	0.00	0.00	7,100.0	0.0	0.0	0.0	0.00	0.00	0.00
7,120.5	0.00	0.00	7,120.5	0.0	0.0	0.0	0.00	0.00	0.00
7,200.0	9.54	200.60	7,199.6	-6.2	-2.3	6.2	12.00	12.00	0.00
7,300.0	21.54	200.60	7,295.8	-31.2	-11.7	31.5	12.00	12.00	0.00
7,400.0	33.54	200.60	7,384.3	-74.4	-28.0	75.2	12.00	12.00	0.00
7,500.0	45.54	200.60	7,461.3	-133.9	-50.3	135.2	12.00	12.00	0.00
7,600.0	57.54	200.60	7,523.4	-207.1	-77.8	209.1	12.00	12.00	0.00
7,700.0	69.54	200.60	7,567.8	-290.7	-109.3	293.6	12.00	12.00	0.00
7,800.0	81.54	200.60	7,592.8	-381.2	-143.3	385.0	12.00	12.00	0.00
7,870.5	90.00	200.60	7,598.0	-446.9	-168.0	451.4	12.00	12.00	0.00
7,871.0	90.00	200.59	7,598.0	-447.4	-168.2	451.9	3.00	0.00	-3.00
7" Intermediate									
7,900.0	90.00	199.72	7,598.0	-474.6	-178.2	479.4	3.00	0.00	-3.00
8,000.0	90.00	196.72	7,598.0	-569.6	-209.4	575.2	3.00	0.00	-3.00
8,100.0	90.00	193.72	7,598.0	-666.1	-235.7	672.3	3.00	0.00	-3.00
8,200.0	90.00	190.72	7,598.0	-763.8	-256.8	770.6	3.00	0.00	-3.00
8,300.0	90.00	187.72	7,598.0	-862.5	-272.8	869.7	3.00	0.00	-3.00
8,400.0	90.00	184.72	7,598.0	-961.9	-283.6	969.4	3.00	0.00	-3.00
8,500.0	90.00	181.72	7,598.0	-1,061.7	-289.3	1,069.3	3.00	0.00	-3.00
8,557.2	90.00	180.00	7,598.0	-1,118.9	-290.1	1,126.5	3.00	0.00	-3.00
8,600.0	90.00	180.00	7,598.0	-1,161.7	-290.1	1,169.3	0.00	0.00	0.00
8,700.0	90.00	180.00	7,598.0	-1,261.7	-290.1	1,269.3	0.00	0.00	0.00
8,800.0	90.00	180.00	7,598.0	-1,361.7	-290.1	1,369.2	0.00	0.00	0.00
8,900.0	90.00	180.00	7,598.0	-1,461.7	-290.1	1,469.2	0.00	0.00	0.00
9,000.0	90.00	180.00	7,598.0	-1,561.7	-290.1	1,569.1	0.00	0.00	0.00
9,100.0	90.00	180.00	7,598.0	-1,661.7	-290.1	1,669.1	0.00	0.00	0.00
9,200.0	90.00	180.00	7,598.0	-1,761.7	-290.1	1,769.1	0.00	0.00	0.00
9,300.0	90.00	180.00	7,598.0	-1,861.7	-290.1	1,869.0	0.00	0.00	0.00
9,400.0	90.00	180.00	7,598.0	-1,961.7	-290.1	1,969.0	0.00	0.00	0.00
9,500.0	90.00	180.00	7,598.0	-2,061.7	-290.1	2,068.9	0.00	0.00	0.00
9,600.0	90.00	180.00	7,598.0	-2,161.7	-290.1	2,168.9	0.00	0.00	0.00
9,700.0	90.00	180.00	7,598.0	-2,261.7	-290.1	2,268.9	0.00	0.00	0.00
9,800.0	90.00	180.00	7,598.0	-2,361.7	-290.1	2,368.8	0.00	0.00	0.00
9,900.0	90.00	180.00	7,598.0	-2,461.7	-290.1	2,468.8	0.00	0.00	0.00

EOG Resources, Inc.

Planning Report

Database: EDM_DENVER
Company: Denver Division- Colorado
Project: DJ - Hereford Ranch
Site: Fox Creek FC25 SESE Pad
Well: Fox Creek 505-2501H
Wellbore: OH
Design: APD Plan (Plat Cert 11/14/14)

Local Co-ordinate Reference: Well Fox Creek 505-2501H
TVD Reference: RKB @ 5416.0usft (KB GL+25')
MD Reference: RKB @ 5416.0usft (KB GL+25')
North Reference: True
Survey Calculation Method: Minimum Curvature

Planned Survey

Measured Depth (usft)	Inclination (°)	Azimuth (°)	Vertical Depth (usft)	+N/-S (usft)	+E/-W (usft)	Vertical Section (usft)	Dogleg Rate (°/100usft)	Build Rate (°/100usft)	Turn Rate (°/100usft)
10,000.0	90.00	180.00	7,598.0	-2,561.7	-290.1	2,568.8	0.00	0.00	0.00
10,100.0	90.00	180.00	7,598.0	-2,661.7	-290.1	2,668.7	0.00	0.00	0.00
10,200.0	90.00	180.00	7,598.0	-2,761.7	-290.1	2,768.7	0.00	0.00	0.00
10,300.0	90.00	180.00	7,598.0	-2,861.7	-290.1	2,868.6	0.00	0.00	0.00
10,400.0	90.00	180.00	7,598.0	-2,961.7	-290.1	2,968.6	0.00	0.00	0.00
10,500.0	90.00	180.00	7,598.0	-3,061.7	-290.1	3,068.6	0.00	0.00	0.00
10,600.0	90.00	180.00	7,598.0	-3,161.7	-290.1	3,168.5	0.00	0.00	0.00
10,700.0	90.00	180.00	7,598.0	-3,261.7	-290.1	3,268.5	0.00	0.00	0.00
10,800.0	90.00	180.00	7,598.0	-3,361.7	-290.1	3,368.5	0.00	0.00	0.00
10,900.0	90.00	180.00	7,598.0	-3,461.7	-290.1	3,468.4	0.00	0.00	0.00
11,000.0	90.00	180.00	7,598.0	-3,561.7	-290.1	3,568.4	0.00	0.00	0.00
11,100.0	90.00	180.00	7,598.0	-3,661.7	-290.1	3,668.3	0.00	0.00	0.00
11,200.0	90.00	180.00	7,598.0	-3,761.7	-290.1	3,768.3	0.00	0.00	0.00
11,300.0	90.00	180.00	7,598.0	-3,861.7	-290.1	3,868.3	0.00	0.00	0.00
11,400.0	90.00	180.00	7,598.0	-3,961.7	-290.1	3,968.2	0.00	0.00	0.00
11,500.0	90.00	180.00	7,598.0	-4,061.7	-290.1	4,068.2	0.00	0.00	0.00
11,600.0	90.00	180.00	7,598.0	-4,161.7	-290.1	4,168.1	0.00	0.00	0.00
11,700.0	90.00	180.00	7,598.0	-4,261.7	-290.1	4,268.1	0.00	0.00	0.00
11,800.0	90.00	180.00	7,598.0	-4,361.7	-290.1	4,368.1	0.00	0.00	0.00
11,900.0	90.00	180.00	7,598.0	-4,461.7	-290.1	4,468.0	0.00	0.00	0.00
12,000.0	90.00	180.00	7,598.0	-4,561.7	-290.1	4,568.0	0.00	0.00	0.00
12,100.0	90.00	180.00	7,598.0	-4,661.7	-290.1	4,668.0	0.00	0.00	0.00
12,200.0	90.00	180.00	7,598.0	-4,761.7	-290.1	4,767.9	0.00	0.00	0.00
12,300.0	90.00	180.00	7,598.0	-4,861.7	-290.0	4,867.9	0.00	0.00	0.00
12,400.0	90.00	180.00	7,598.0	-4,961.7	-290.0	4,967.8	0.00	0.00	0.00
12,500.0	90.00	180.00	7,598.0	-5,061.7	-290.0	5,067.8	0.00	0.00	0.00
12,600.0	90.00	180.00	7,598.0	-5,161.7	-290.0	5,167.8	0.00	0.00	0.00
12,700.0	90.00	180.00	7,598.0	-5,261.7	-290.0	5,267.7	0.00	0.00	0.00
12,800.0	90.00	180.00	7,598.0	-5,361.7	-290.0	5,367.7	0.00	0.00	0.00
12,900.0	90.00	180.00	7,598.0	-5,461.7	-290.0	5,467.7	0.00	0.00	0.00
13,000.0	90.00	180.00	7,598.0	-5,561.7	-290.0	5,567.6	0.00	0.00	0.00
13,100.0	90.00	180.00	7,598.0	-5,661.7	-290.0	5,667.6	0.00	0.00	0.00
13,200.0	90.00	180.00	7,598.0	-5,761.7	-290.0	5,767.5	0.00	0.00	0.00
13,300.0	90.00	180.00	7,598.0	-5,861.7	-290.0	5,867.5	0.00	0.00	0.00
13,400.0	90.00	180.00	7,598.0	-5,961.7	-290.0	5,967.5	0.00	0.00	0.00
13,500.0	90.00	180.00	7,598.0	-6,061.7	-290.0	6,067.4	0.00	0.00	0.00
13,600.0	90.00	180.00	7,598.0	-6,161.7	-290.0	6,167.4	0.00	0.00	0.00
13,700.0	90.00	180.00	7,598.0	-6,261.7	-290.0	6,267.4	0.00	0.00	0.00
13,800.0	90.00	180.00	7,598.0	-6,361.7	-290.0	6,367.3	0.00	0.00	0.00
13,900.0	90.00	180.00	7,598.0	-6,461.7	-290.0	6,467.3	0.00	0.00	0.00
14,000.0	90.00	180.00	7,598.0	-6,561.7	-290.0	6,567.2	0.00	0.00	0.00
14,100.0	90.00	180.00	7,598.0	-6,661.7	-290.0	6,667.2	0.00	0.00	0.00
14,200.0	90.00	180.00	7,598.0	-6,761.7	-290.0	6,767.2	0.00	0.00	0.00
14,300.0	90.00	180.00	7,598.0	-6,861.7	-290.0	6,867.1	0.00	0.00	0.00
14,400.0	90.00	180.00	7,598.0	-6,961.7	-290.0	6,967.1	0.00	0.00	0.00
14,500.0	90.00	180.00	7,598.0	-7,061.7	-290.0	7,067.0	0.00	0.00	0.00
14,600.0	90.00	180.00	7,598.0	-7,161.7	-290.0	7,167.0	0.00	0.00	0.00
14,700.0	90.00	180.00	7,598.0	-7,261.7	-290.0	7,267.0	0.00	0.00	0.00
14,800.0	90.00	180.00	7,598.0	-7,361.7	-290.0	7,366.9	0.00	0.00	0.00
14,900.0	90.00	180.00	7,598.0	-7,461.7	-290.0	7,466.9	0.00	0.00	0.00
15,000.0	90.00	180.00	7,598.0	-7,561.7	-290.0	7,566.9	0.00	0.00	0.00
15,100.0	90.00	180.00	7,598.0	-7,661.7	-290.0	7,666.8	0.00	0.00	0.00
15,200.0	90.00	180.00	7,598.0	-7,761.7	-290.0	7,766.8	0.00	0.00	0.00
15,300.0	90.00	180.00	7,598.0	-7,861.7	-290.0	7,866.7	0.00	0.00	0.00

EOG Resources, Inc.
Planning Report

Database:	EDM_DENVER	Local Co-ordinate Reference:	Well Fox Creek 505-2501H
Company:	Denver Division- Colorado	TVD Reference:	RKB @ 5416.0usft (KB GL+25')
Project:	DJ - Hereford Ranch	MD Reference:	RKB @ 5416.0usft (KB GL+25')
Site:	Fox Creek FC25 SESE Pad	North Reference:	True
Well:	Fox Creek 505-2501H	Survey Calculation Method:	Minimum Curvature
Wellbore:	OH		
Design:	APD Plan (Plat Cert 11/14/14)		

Planned Survey									
Measured Depth (usft)	Inclination (°)	Azimuth (°)	Vertical Depth (usft)	+N/-S (usft)	+E/-W (usft)	Vertical Section (usft)	Dogleg Rate (°/100usft)	Build Rate (°/100usft)	Turn Rate (°/100usft)
15,400.0	90.00	180.00	7,598.0	-7,961.7	-290.0	7,966.7	0.00	0.00	0.00
15,500.0	90.00	180.00	7,598.0	-8,061.7	-290.0	8,066.7	0.00	0.00	0.00
15,600.0	90.00	180.00	7,598.0	-8,161.7	-290.0	8,166.6	0.00	0.00	0.00
15,700.0	90.00	180.00	7,598.0	-8,261.7	-290.0	8,266.6	0.00	0.00	0.00
15,800.0	90.00	180.00	7,598.0	-8,361.7	-290.0	8,366.6	0.00	0.00	0.00
15,900.0	90.00	180.00	7,598.0	-8,461.7	-290.0	8,466.5	0.00	0.00	0.00
16,000.0	90.00	180.00	7,598.0	-8,561.7	-290.0	8,566.5	0.00	0.00	0.00
16,100.0	90.00	180.00	7,598.0	-8,661.7	-290.0	8,666.4	0.00	0.00	0.00
16,200.0	90.00	180.00	7,598.0	-8,761.7	-290.0	8,766.4	0.00	0.00	0.00
16,300.0	90.00	180.00	7,598.0	-8,861.7	-290.0	8,866.4	0.00	0.00	0.00
16,400.0	90.00	180.00	7,598.0	-8,961.7	-290.0	8,966.3	0.00	0.00	0.00
16,500.0	90.00	180.00	7,598.0	-9,061.7	-290.0	9,066.3	0.00	0.00	0.00
16,600.0	90.00	180.00	7,598.0	-9,161.7	-290.0	9,166.2	0.00	0.00	0.00
16,700.0	90.00	180.00	7,598.0	-9,261.7	-290.0	9,266.2	0.00	0.00	0.00
16,800.0	90.00	180.00	7,598.0	-9,361.7	-290.0	9,366.2	0.00	0.00	0.00
16,900.0	90.00	180.00	7,598.0	-9,461.7	-290.0	9,466.1	0.00	0.00	0.00
17,000.0	90.00	180.00	7,598.0	-9,561.7	-290.0	9,566.1	0.00	0.00	0.00
17,100.0	90.00	180.00	7,598.0	-9,661.7	-290.0	9,666.1	0.00	0.00	0.00
17,200.0	90.00	180.00	7,598.0	-9,761.7	-290.0	9,766.0	0.00	0.00	0.00
17,300.0	90.00	180.00	7,598.0	-9,861.7	-290.0	9,866.0	0.00	0.00	0.00
17,400.0	90.00	180.00	7,598.0	-9,961.7	-290.0	9,965.9	0.00	0.00	0.00
17,500.0	90.00	180.00	7,598.0	-10,061.7	-290.0	10,065.9	0.00	0.00	0.00
17,600.0	90.00	180.00	7,598.0	-10,161.7	-290.0	10,165.9	0.00	0.00	0.00
17,700.0	90.00	180.00	7,598.0	-10,261.7	-290.0	10,265.8	0.00	0.00	0.00
17,800.0	90.00	180.00	7,598.0	-10,361.7	-290.0	10,365.8	0.00	0.00	0.00
17,900.0	90.00	180.00	7,598.0	-10,461.7	-290.0	10,465.8	0.00	0.00	0.00
17,958.0	90.00	180.00	7,598.0	-10,519.7	-290.0	10,523.7	0.00	0.00	0.00
4 1/2" Liner									
17,958.6	90.00	180.00	7,598.0	-10,520.4	-290.0	10,524.4	0.00	0.00	0.00

Design Targets									
Target Name - hit/miss target - Shape	Dip Angle (°)	Dip Dir. (°)	TVD (usft)	+N/-S (usft)	+E/-W (usft)	Northing (usft)	Easting (usft)	Latitude	Longitude
Fox Creek 505-2501H P - plan hits target center - Point	0.00	0.00	7,598.0	-10,520.4	-290.0	589,398.30	2,310,974.35	40° 56' 45.140 N	104° 22' 27.742 W

Casing Points					
Measured Depth (usft)	Vertical Depth (usft)	Name	Casing Diameter (")	Hole Diameter (")	
1,338.0	1,338.0	9 5/8" Surface	9-5/8	13-1/2	
7,871.0	7,598.0	7" Intermediate	7	8-3/4	
17,958.0	7,598.0	4 1/2" Liner	4-1/2	6-1/8	