

WELL BORES
CONTINUE INTO
SECTION 20

NE. COR.
SEC. 29, T12N, R65W
FOUND STONE

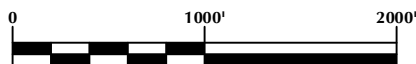
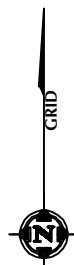
29

RESOLUTION FEB 13 65-29-20-6NH BOTTOM OF HOLE

RESOLUTION FED 12-65-29-20-7NH BOTTOM OF HOLE

SE. COR.
SEC. 29, T12N, R65W
SET ALUM. CAP
/ L.S. NO. 38305

1. ▲ INDICATES FOUND SECTION CORNER
2. ● INDICATES CALCULATED CORNER
3. BASIS OF BEARING DERIVED FROM COLORADO COORDINATE SYSTEM 1983 NORTH ZONE UNLESS OTHERWISE NOTED.
4. ALL MEASURED DISTANCES ARE GRID.
COMBINED SCALE FACTOR: .99975846
5. WELL FOOTAGES ARE MEASURED AT RIGHT ANGLES TO THE SECTION LINES.



SCALE: 1" = 1000'

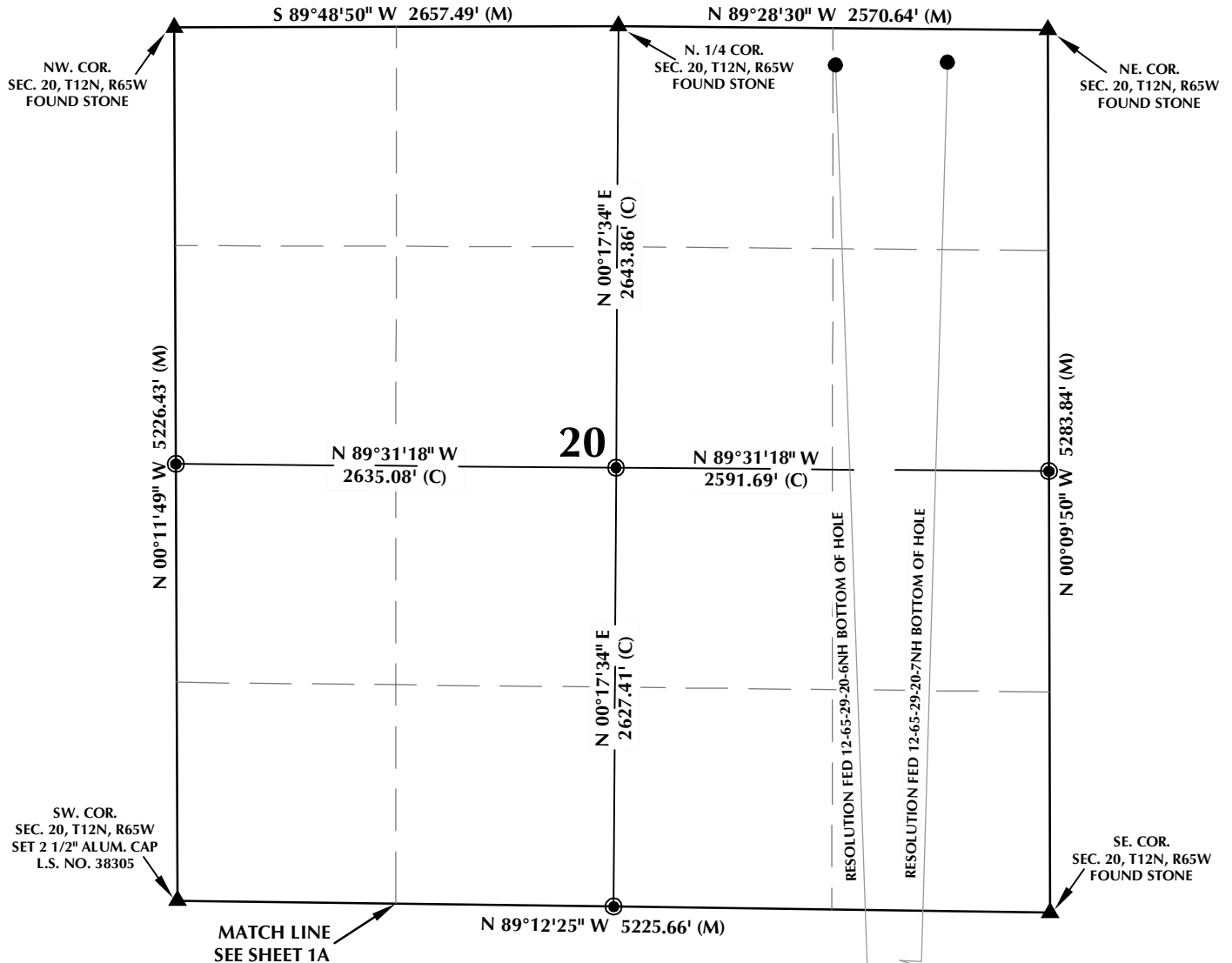
**Anadarko E&P
Onshore LLC
1099 18th Street
Denver, Colorado 80202**



LOVELAND OFFICE
1635 Foxtrail Drive, Suite 204
Loveland, Colorado 80538
Phone 970-776-4331

1A
1A OF 1

RESOLUTION FED 12-65-29-20-7NH T12N, R65W

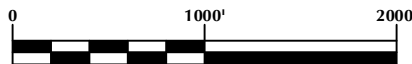


WELL NOTES:

RESOLUTION FED 12-65-29-20-6NH
 SURFACE: 350' FSL, 935' FEL
 BOTTOM HOLE: 221' FNL, 1270' FEL
 RESOLUTION FED 12-65-29-20-7NH
 SURFACE: 350' FSL, 905' FEL
 BOTTOM HOLE: 198' FNL, 600' FEL

NOTES:

- ▲ INDICATES FOUND SECTION CORNER
- INDICATES CALCULATED CORNER
- BASIS OF BEARING DERIVED FROM COLORADO COORDINATE SYSTEM 1983 NORTH ZONE UNLESS OTHERWISE NOTED.
- ALL MEASURED DISTANCES ARE GRID.
- COMBINED SCALE FACTOR: .99975846
- WELL FOOTAGES ARE MEASURED AT RIGHT ANGLES TO THE SECTION LINES.



SCALE: 1" = 1000'

WELL PAD - RESOLUTION FED 12-65-29-20-7NH

MULTI-WELL PLAN
RESOLUTION FED 12-65-29-20-6NH &
RESOLUTION FED 12-65-29-20-7NH
LOCATED IN SECTIONS 29 & 20
T12N, R65W, 6TH P.M.
WELD COUNTY, COLORADO

Anadarko E&P
Onshore LLC
 1099 18th Street
 Denver, Colorado 80202



CONSULTING, LLC

SHERIDAN OFFICE
 1095 Saberton Avenue
 Sheridan, Wyoming 82801
 Phone 307-674-0609

LOVELAND OFFICE
 1635 Foxtrail Drive, Suite 204
 Loveland, Colorado 80538
 Phone 970-776-4331

DRAFTED BY:	MDZ	CHECKED BY:	BJR	SHEET NO:
DATE DRAFTED:	1/26/15	DATE SURVEYED:	12/10/14	1B
REVISED:	2/3/15	FILE NAME:	14-52	1B OF 1