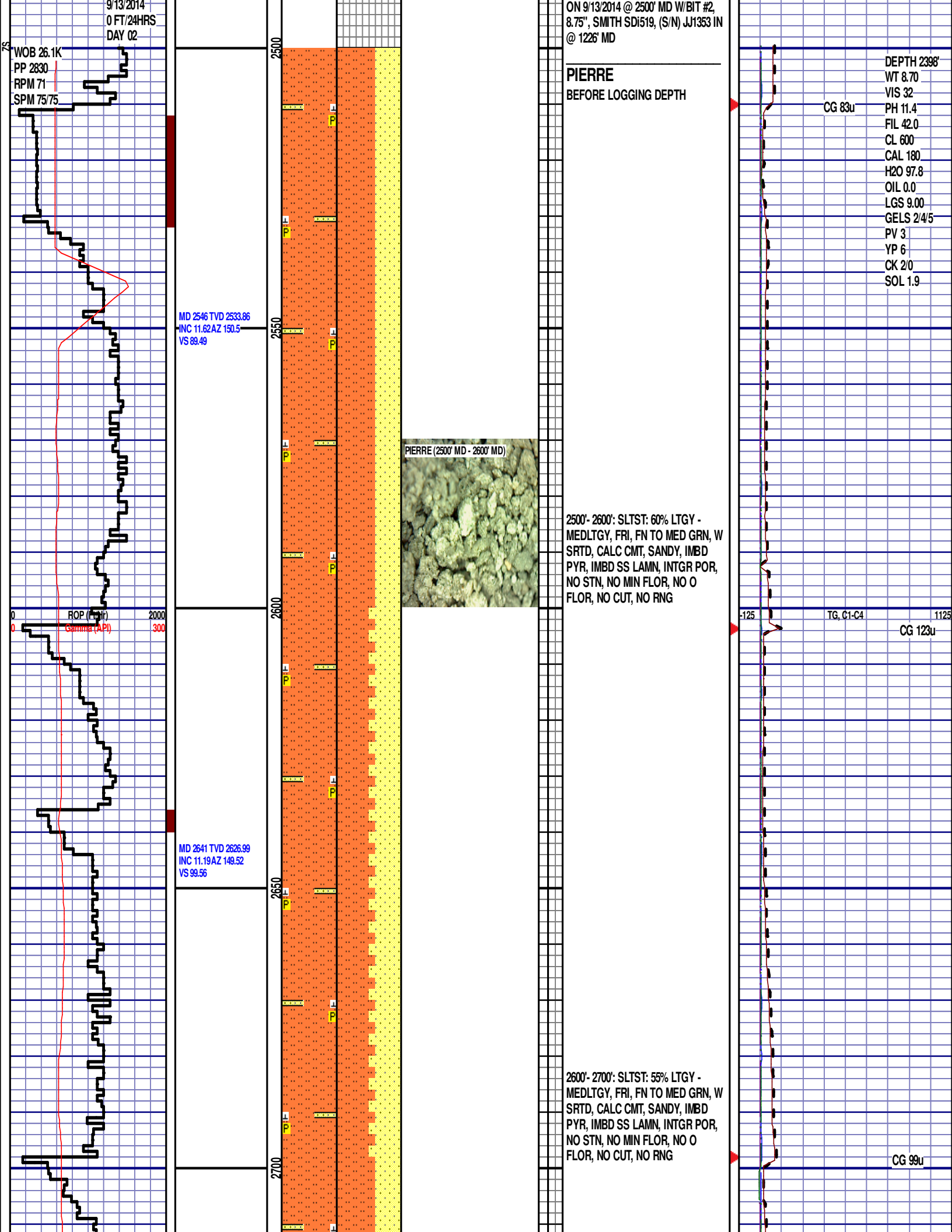
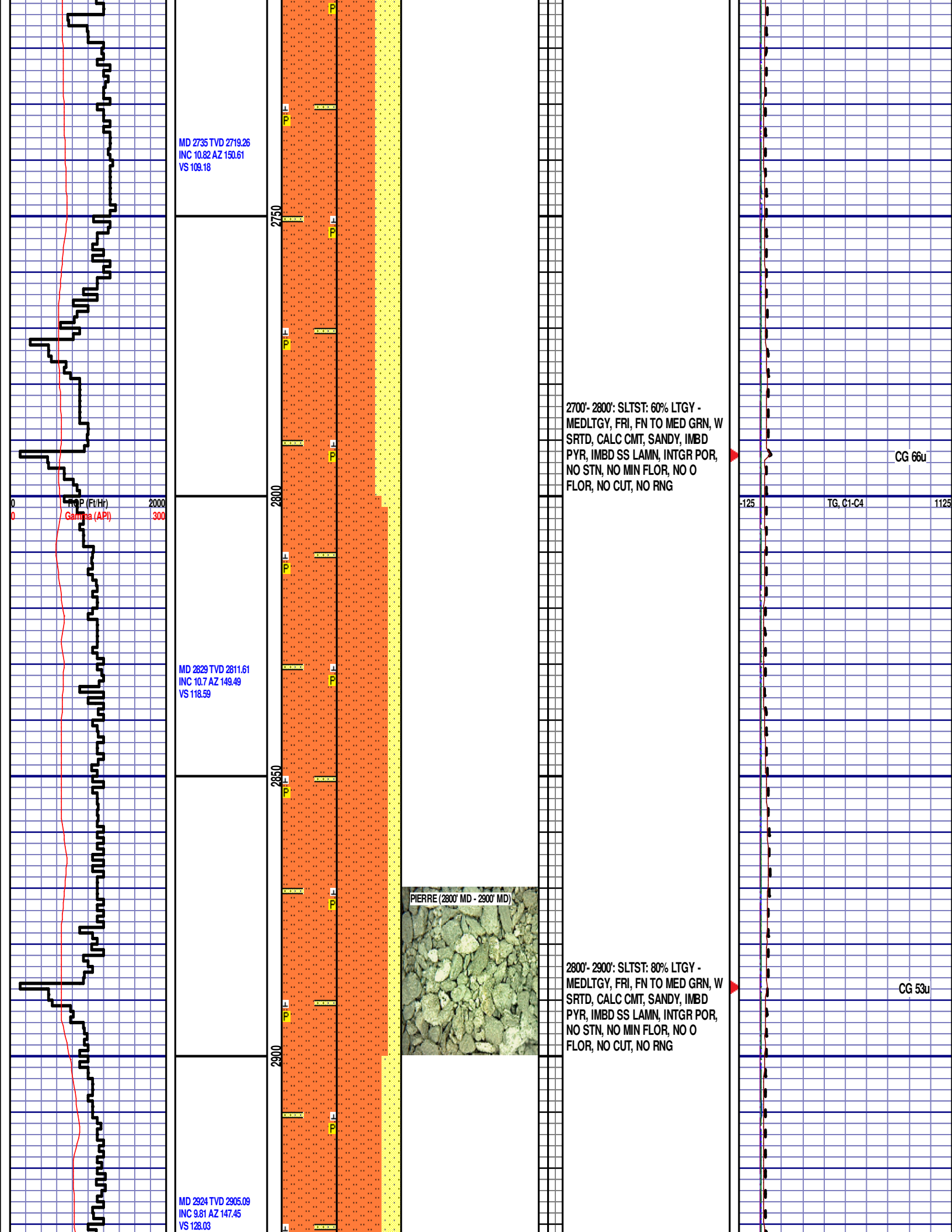


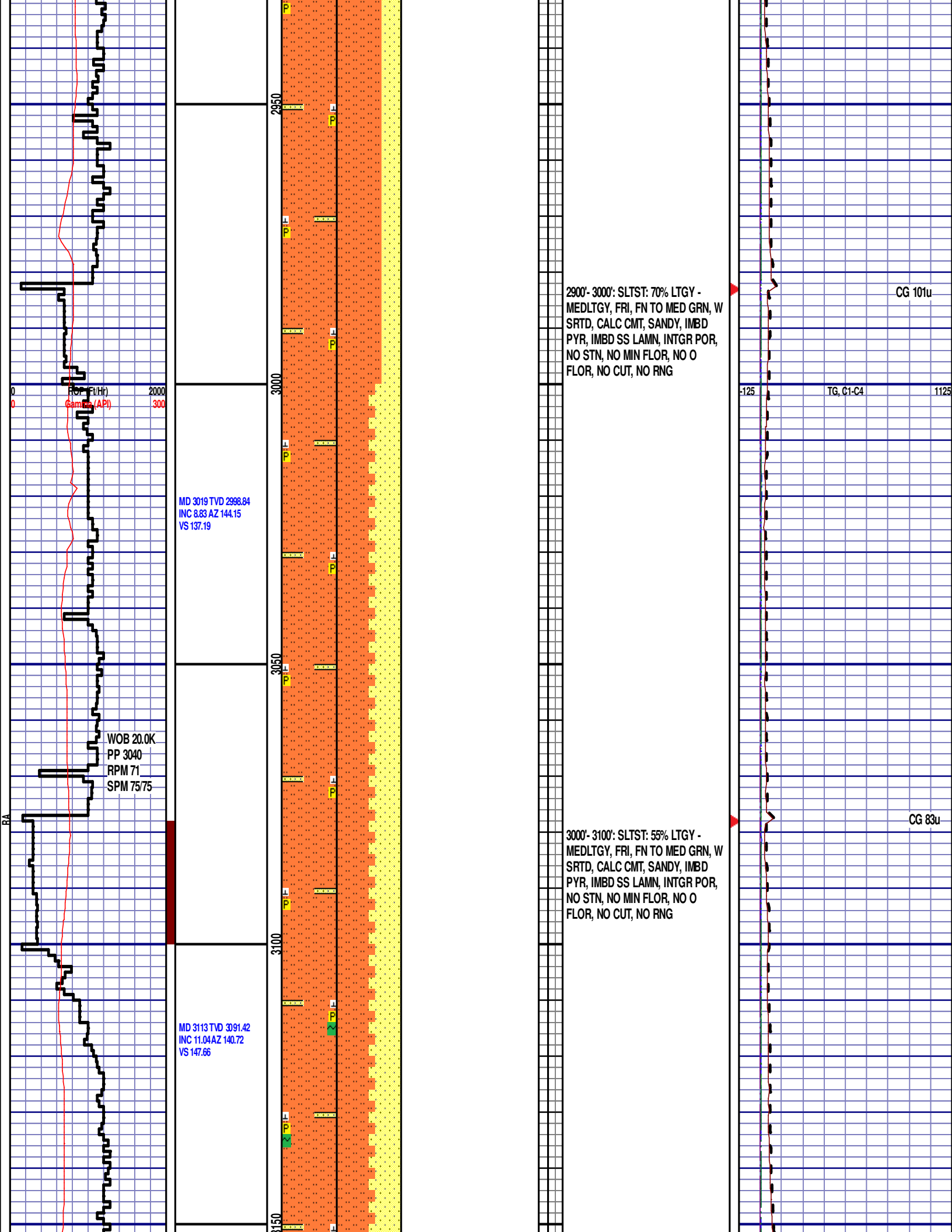


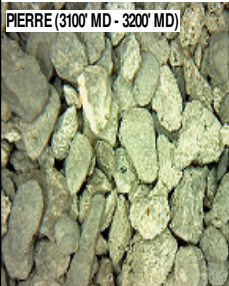
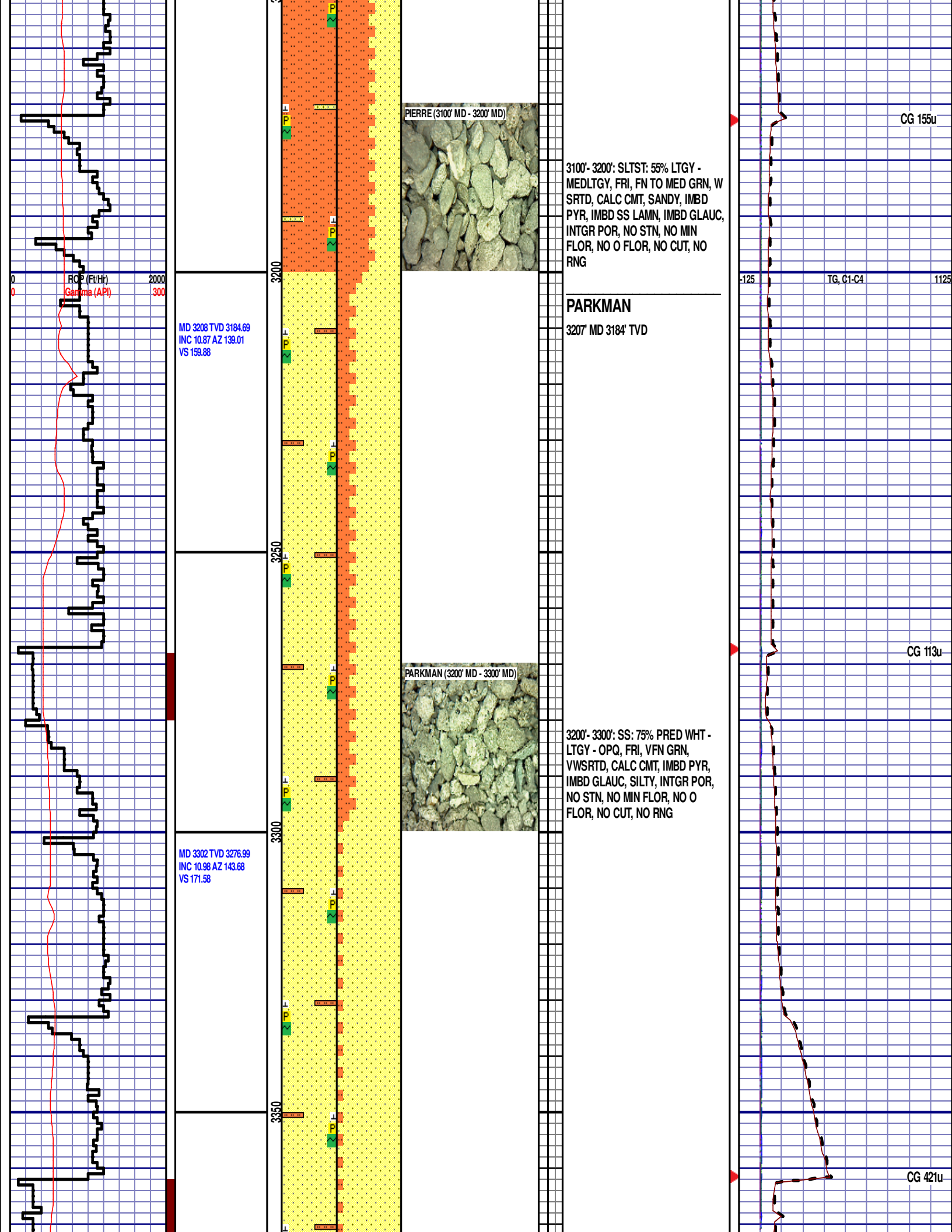
9/13/2014  
0 FT/24HRS  
DAY 02

WOB 26.1K  
PP 2830  
RPM 71  
SPM 75/75









3100'- 3200': SLTST: 55% LTGY - MEDLTGY, FRI, FN TO MED GRN, W SRTD, CALC CMT, SANDY, IMBD PYR, IMBD SS LAMN, IMBD GLAUC, INTGR POR, NO STN, NO MIN FLOR, NO O FLOR, NO CUT, NO RNG

**PARKMAN**

3207' MD 3184' TVD



3200'- 3300': SS: 75% PRED WHT - LTGY - OPQ, FRI, VFN GRN, VWSRTD, CALC CMT, IMBD PYR, IMBD GLAUC, SILTY, INTGR POR, NO STN, NO MIN FLOR, NO O FLOR, NO CUT, NO RNG

MD 3208 TVD 3184.69  
INC 10.87 AZ 139.01  
VS 159.88

MD 3302 TVD 3276.99  
INC 10.98 AZ 143.68  
VS 171.58

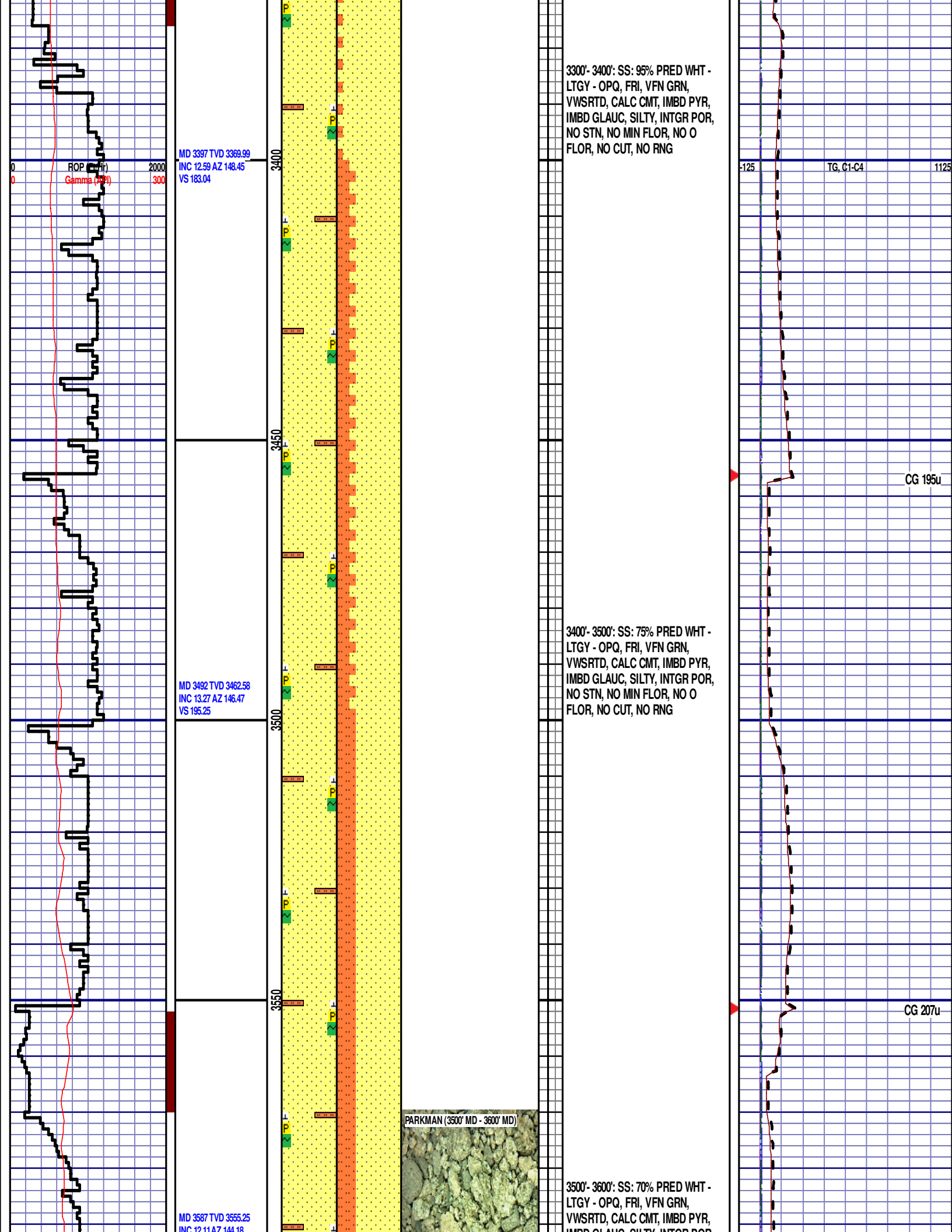
CG 155u

TG, C1-C4

CG 113u

CG 421u

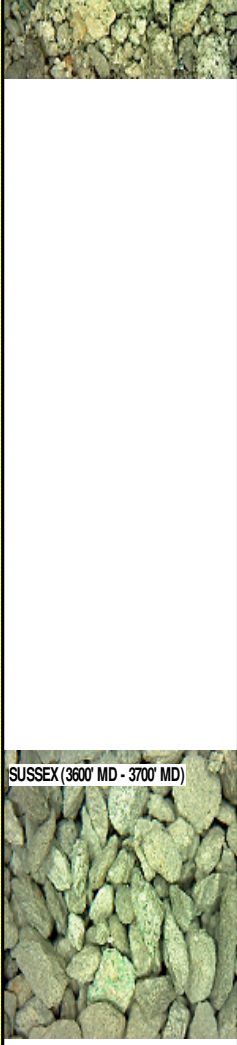
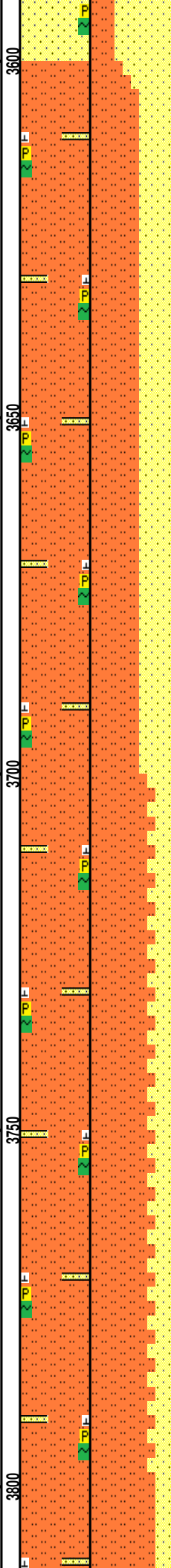
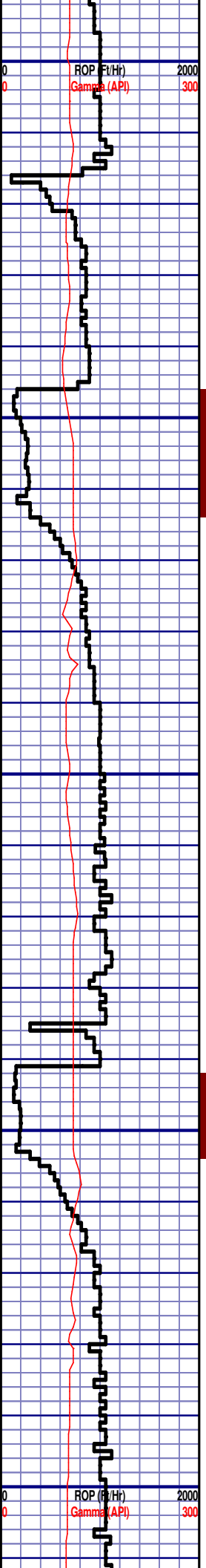




VS 207.83

MD 3681 TVD 3647.56  
INC 9.65 AZ 140.46  
VS 219.21

MD 3776 TVD 3741.45  
INC 7.88 AZ 146.2  
VS 228.4

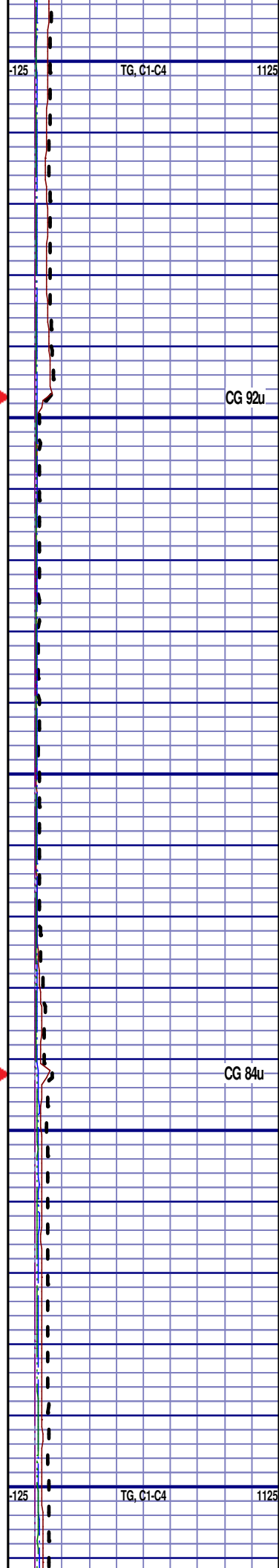


IMBD GLAUC, SILTY, INTGR POR,  
NO STN, NO MIN FLOR, NO O  
FLOR, NO CUT, NO RNG

**SUSSEX**  
3634' MD 3601' TVD

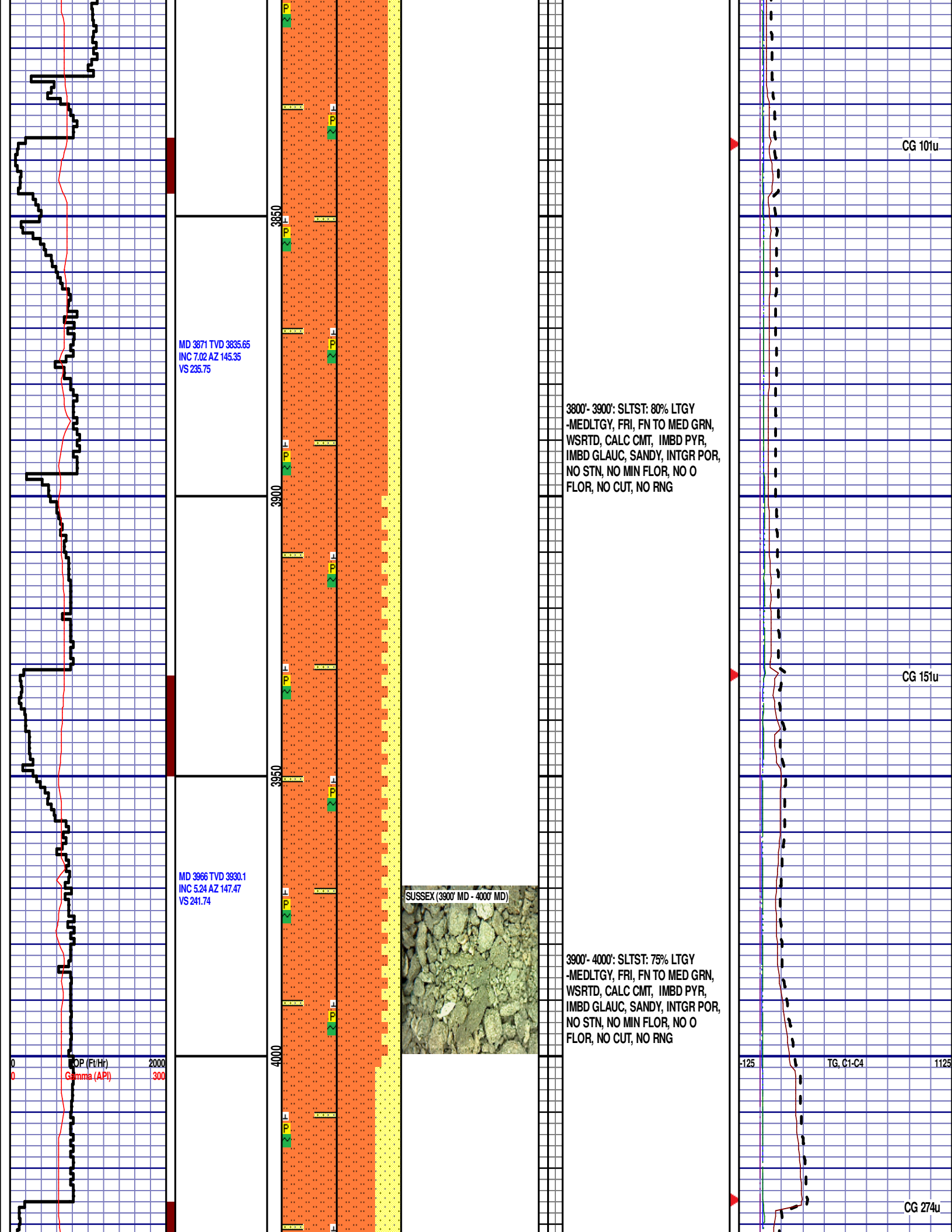
3600'- 3700': SLTST: 60% LTGY  
-MEDLTGY, FRI, FN TO MED GRN,  
WSRTD, CALC CMT, IMBD PYR,  
IMBD GLAUC, SANDY, INTGR POR,  
NO STN, NO MIN FLOR, NO O  
FLOR, NO CUT, NO RNG

3700'- 3800': SLTST: 75% LTGY  
-MEDLTGY, FRI, FN TO MED GRN,  
WSRTD, CALC CMT, IMBD PYR,  
IMBD GLAUC, SANDY, INTGR POR,  
NO STN, NO MIN FLOR, NO O  
FLOR, NO CUT, NO RNG



CG 92u

CG 84u





WOB 12.8K  
PP 3095  
RPM 70  
SPM 75/75

MD 4060 TVD 4023.88  
INC 2.46 AZ 144.78  
VS 245.44

MD 4155 TVD 4118.84  
INC 1.22 AZ 78.79  
VS 247.66

4000'- 4100': SLTST: 60% LTGY  
-MEDLTGY, FRI, FN TO MED GRN,  
WSRTD, CALC CMT, IMBD PYR,  
IMBD GLAUC, SANDY, INTGR POR,  
NO STN, NO MIN FLOR, NO O  
FLOR, NO CUT, NO RNG

4100'- 4200': SLTST: 85% LTGY  
-MEDLTGY, FRI, FN TO MED GRN,  
WSRTD, CALC CMT, IMBD PYR,  
IMBD GLAUC, SANDY, INTGR POR,  
NO STN, NO MIN FLOR, NO O  
FLOR, NO CUT, NO RNG

CG 346u

CG 253u

ROP (Ft/Hr) 2000  
Gamma (API) 300

-125 TG, C1-C4 1125

MD 4250 TVD 4213.81  
INC 1.24 AZ 97.95  
VS 249.66

MD 4345 TVD 4308.8  
INC 0.85 AZ 92.35  
VS 251.39

MD 4439 TVD 4402.79  
INC 0.59 AZ 179.01  
VS 252.12

SUSSEX (4200' MD - 4300' MD)



4200'- 4300': SLTST: 90% LTGY  
-MEDLTGY, FRI, FN TO MED GRN,  
WSRTD, CALC CMT, IMBD PYR,  
SANDY, INTGR POR, NO STN, NO  
MIN FLOR, NO O FLOR, NO CUT, NO  
RNG

**SHANNON**  
4331' MD 4295' TVD

SHANNON (4300' MD - 4400' MD)



4300'- 4400': SLTST: 80% PRED LTGY  
-MEDLTGY, FRI, FN TO MED GRN,  
WSRTD, CALC CMT, IMBD PYR,  
SANDY, INTGR POR, NO STN, NO  
MIN FLOR, NO O FLOR, NO CUT, NO  
RNG

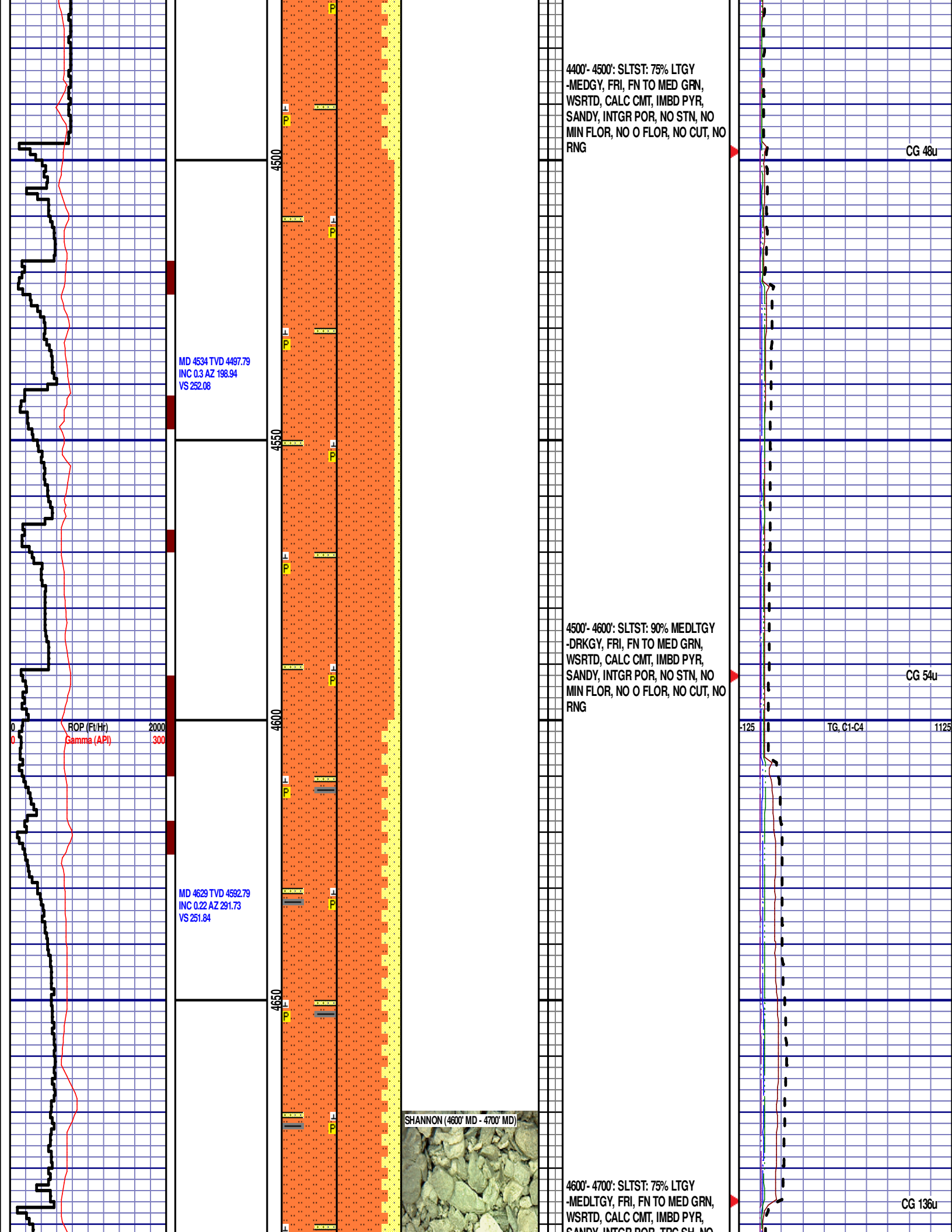
ROP (Ft/Hr)  
Gamma (API)

2000  
300

TG, C1-C4

CG 108u

CG 317u



4400'- 4500': SLTST: 75% LTGY  
-MEDGY, FRI, FN TO MED GRN,  
WSRTD, CALC CMT, IMBD PYR,  
SANDY, INTGR POR, NO STN, NO  
MIN FLOR, NO O FLOR, NO CUT, NO  
RNG

CG 48u

MD 4534 TVD 4497.79  
INC 0.3 AZ 198.94  
VS 252.08

4500

4550

4600

MD 4629 TVD 4592.79  
INC 0.22 AZ 291.73  
VS 251.84

4650

4500'- 4600': SLTST: 90% MEDLTGY  
-DRKGY, FRI, FN TO MED GRN,  
WSRTD, CALC CMT, IMBD PYR,  
SANDY, INTGR POR, NO STN, NO  
MIN FLOR, NO O FLOR, NO CUT, NO  
RNG

CG 54u

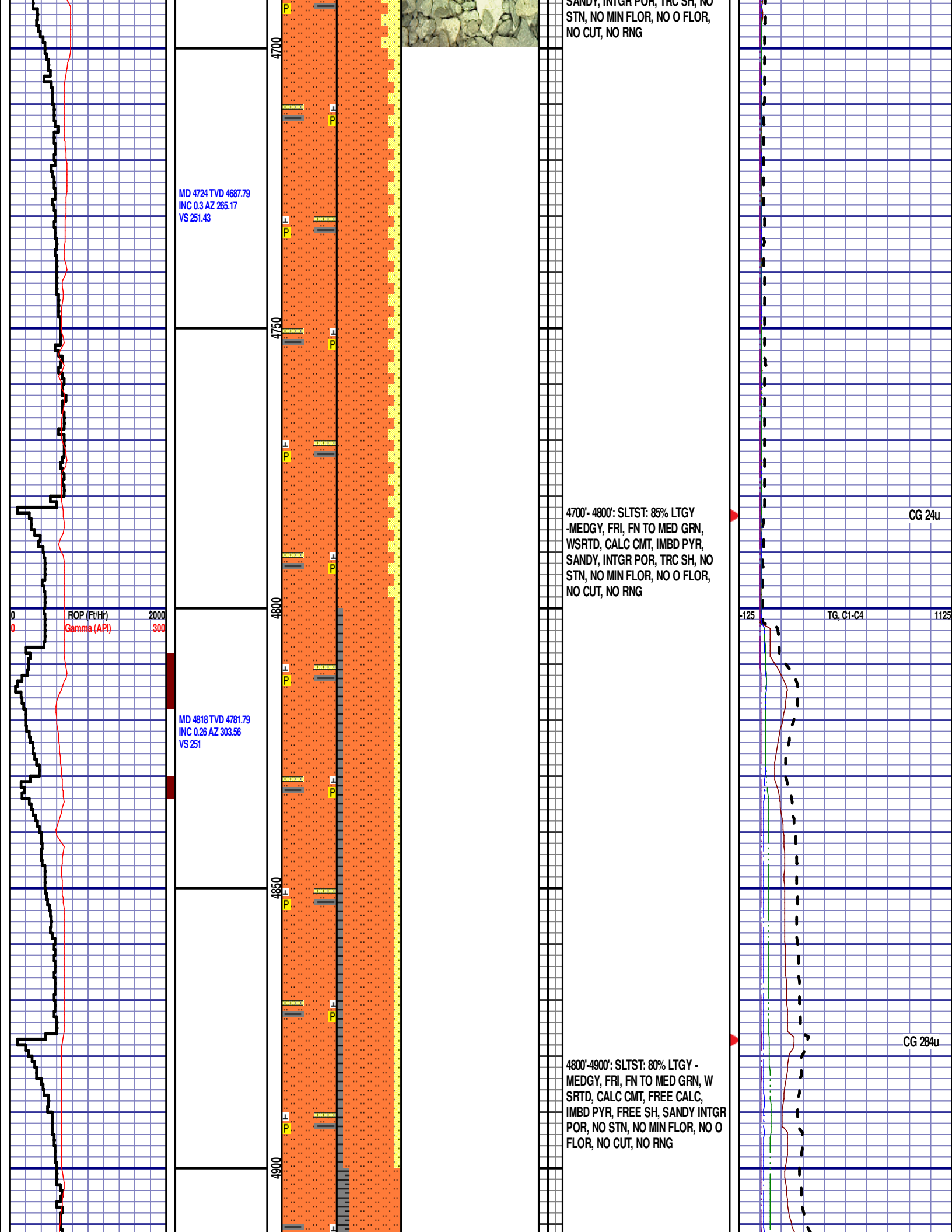
TG, C1-C4

SHANNON (4600' MD - 4700' MD)



4600'- 4700': SLTST: 75% LTGY  
-MEDLTGY, FRI, FN TO MED GRN,  
WSRTD, CALC CMT, IMBD PYR,  
SANDY, INTGR POR, NO STN, NO  
MIN FLOR, NO O FLOR, NO CUT, NO  
RNG

CG 136u



MD 4913 TVD 4876.79  
INC 0.48 AZ 355.71  
VS 250.77

MD 5007 TVD 4970.79  
INC 0.12 AZ 41.58  
VS 250.79

MD 5102 TVD 5065.51  
INC 7.47 AZ 96.76  
VS 257.02

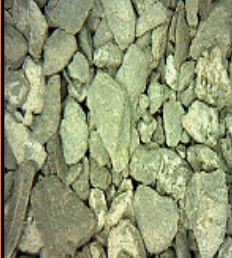
4950

5000

5050

5100

SHANNON (4900' MD - 5000' MD)



4900'-5000': SLTST: 80% LTGY -  
MEDGY, FRI, FN TO MED GRN, W  
SRTD, CALC CMT, FREE CALC,  
IMBD PYR, FREE SH, INTGR POR,  
NO STN, NO MIN FLOR, NO O  
FLOR, NO CUT, NO RNG

### TEEPEE BUTTES

5018' MD 4982' TVD

TEEPEE BUTTES (5000' MD - 5100'  
MD)



5000'-5100': SLTST: 80% LTGY -  
MEDGY, FRI, FN TO MED GRN, W  
SRTD, CALC CMT, FREE CALC,  
IMBD PYR, SANDY, FREE SH,  
INTGR POR, NO STN, NO MIN  
FLOR, NO O FLOR, NO CUT, NO  
RNG

SWITCHING TO 30' SAMPLE  
INTERVAL

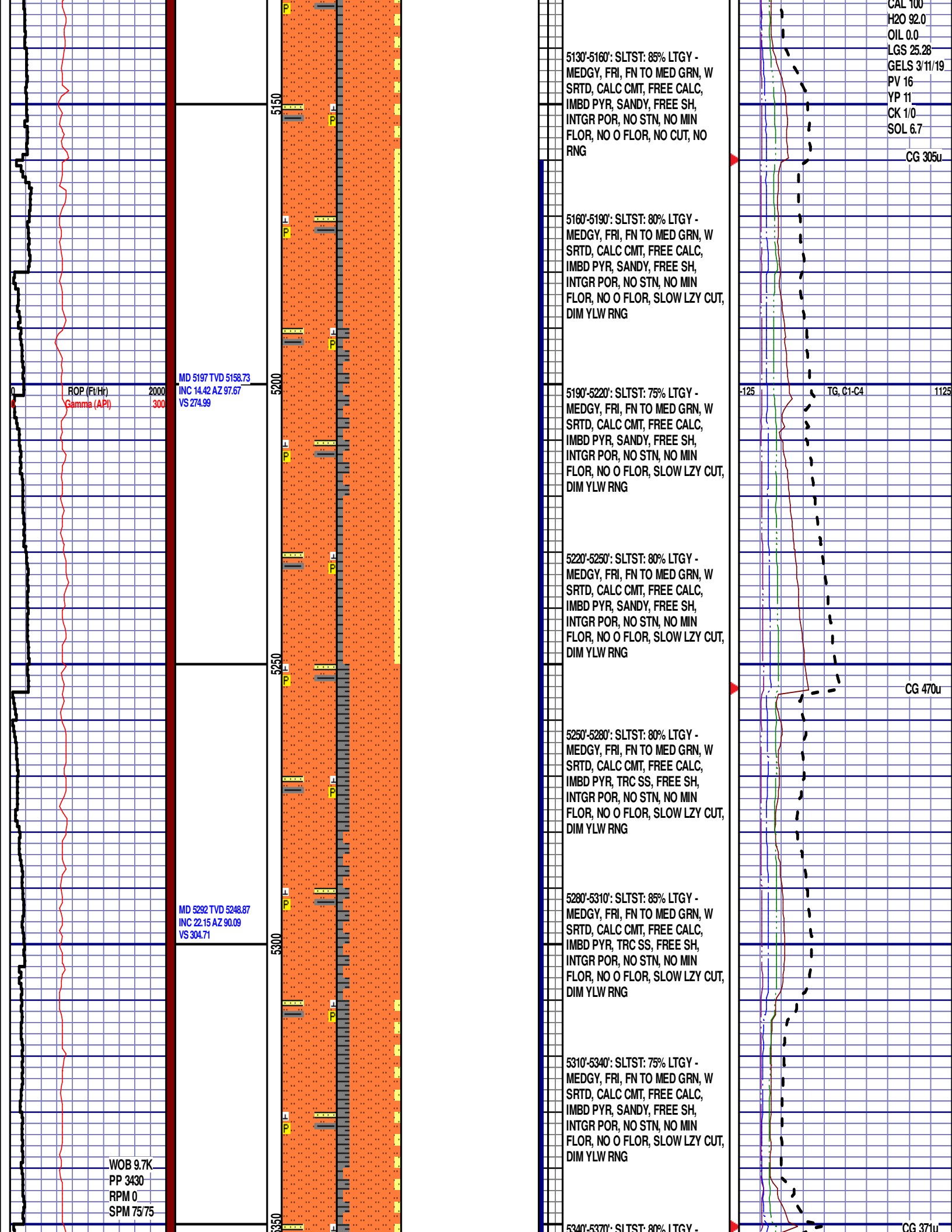
5100'-5130': SLTST: 90% LTGY -  
MEDGY, FRI, FN TO MED GRN, W  
SRTD, CALC CMT, FREE CALC,  
IMBD PYR, FREE SH, TRC SS,  
INTGR POR, NO STN, NO MIN  
FLOR, NO O FLOR, NO CUT, NO  
RNG

CG 284u

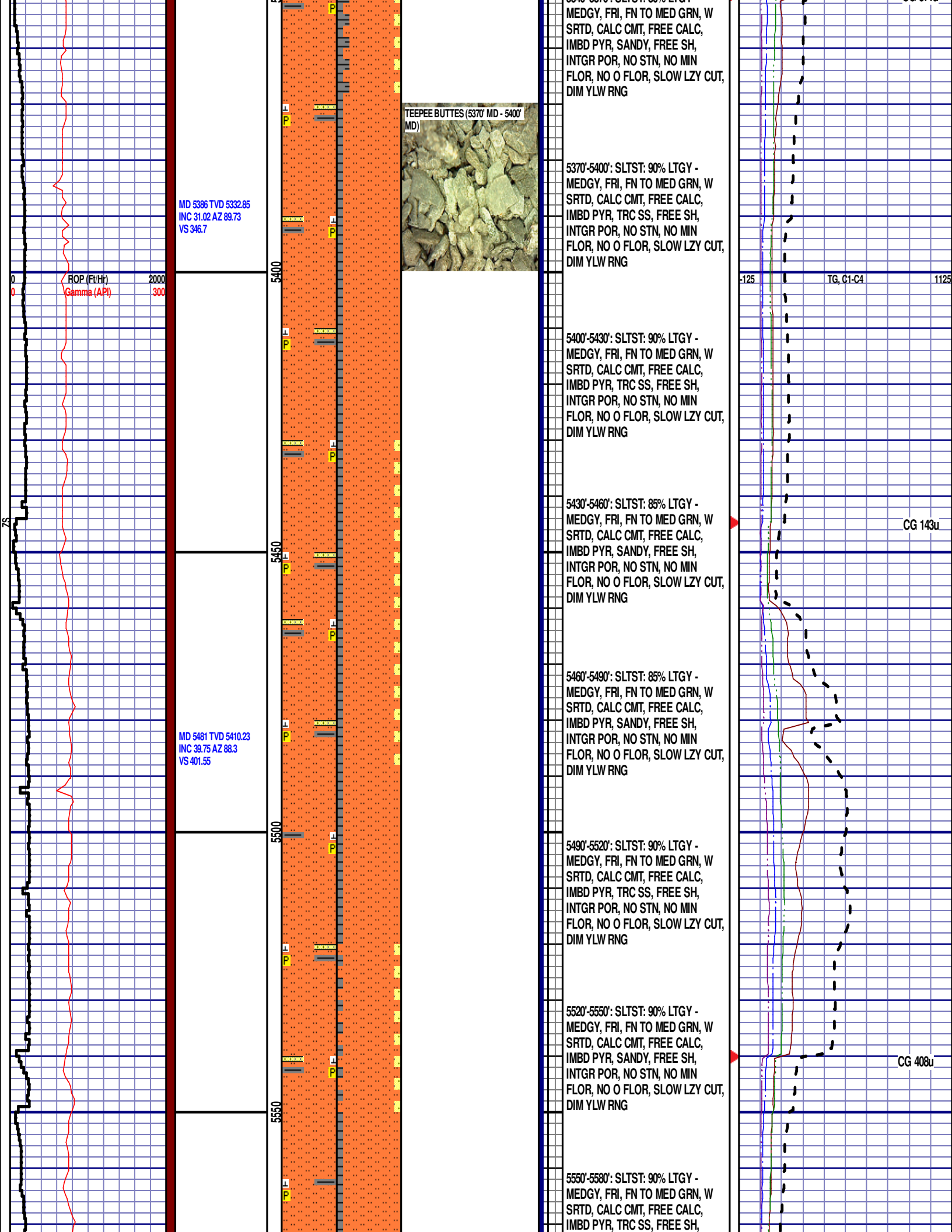
TG, C1-C4

CG 298u

DEPTH 5115'  
WT 9.75  
VIS 44  
PH 9.6  
FIL 7.0  
CL 1150  
SAL 100







MD 5576 TVD 5478.3  
INC 48.59 AZ 87.84  
VS 467.48

ROP (Ft/Hr)  
Gamma (API)

2000  
300

5600

5650

5700

50

MD 5670 TVD 5535.22  
INC 56.8 AZ 87.89  
VS 541.95

TEEPEE BUTTES (5670' MD - 5700'  
MD)



INTGR POR, NO STN, NO MIN  
FLOR, NO O FLOR, SLOW LZ CUT,  
DIM YLW RNG

5580'-5610': SLTST: 85% LTGY -  
MEDGY, FRI, FN TO MED GRN, W  
SRTD, CALC CMT, FREE CALC,  
IMBD PYR, TRC SS, FREE SH,  
INTGR POR, NO STN, NO MIN  
FLOR, NO O FLOR, SLOW LZ CUT,  
DIM YLW RNG

5610'-5640': SLTST: 85% LTGY -  
MEDGY, FRI, FN TO MED GRN, W  
SRTD, CALC CMT, FREE CALC,  
IMBD PYR, SANDY, FREE SH,  
INTGR POR, NO STN, NO MIN  
FLOR, NO O FLOR, SLOW LZ CUT,  
DIM YLW RNG

5640'-5670': SLTST: 85% LTGY -  
MEDGY, FRI, FN TO MED GRN, W  
SRTD, CALC CMT, FREE CALC,  
IMBD PYR, TRC SS, FREE SH,  
INTGR POR, NO STN, NO MIN  
FLOR, NO O FLOR, SLOW LZ CUT,  
DIM YLW RNG

5670'-5700': SLTST: 85% LTGY -  
MEDGY, FRI, FN TO MED GRN, W  
SRTD, CALC CMT, FREE CALC,  
IMBD PYR, SANDY, FREE SH,  
INTGR POR, NO STN, NO MIN  
FLOR, NO O FLOR, SLOW LZ CUT,  
DIM YLW RNG

END OF VERTICAL LOG @ 5700' MD  
ON 9/13/2014, CONTINUED ON  
HORIZONTAL LOG.

-125

TG, C1-C4

1125

CG 349u