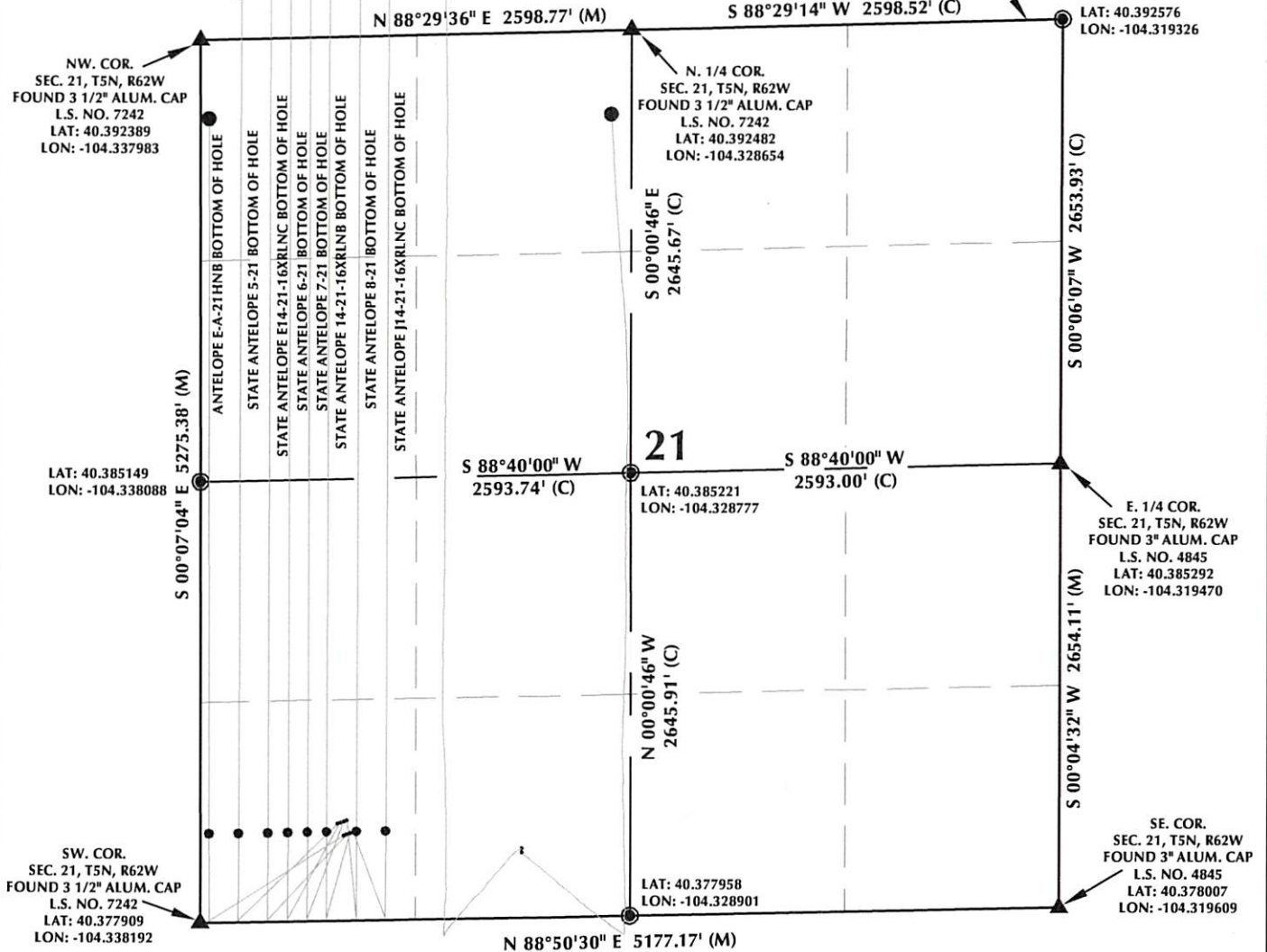


ANTELOPE 14-21 T5N, R62W

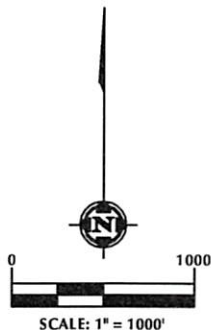
WELL BORES CONTINUE
INTO SECTION 16

MATCH LINE
SEE SHEET 1B



NOTES:

- ▲ INDICATES FOUND SECTION CORNER
- INDICATES CALCULATED CORNER
- BASIS OF BEARING DERIVED FROM COLORADO COORDINATE SYSTEM 1983 NORTH ZONE UNLESS OTHERWISE NOTED.
- ALL MEASURED DISTANCES ARE GRID.
- COMBINED SCALE FACTOR: .99974169
- WELL FOOTAGES ARE MEASURED AT RIGHT ANGLES TO THE SECTION LINES.



WELL PAD - ANTELOPE 14-21

MULTI-WELL PLAN
ANTELOPE E-A-21HNB,
STATE ANTELOPE E14-21-16XRLNC,
STATE ANTELOPE 14-21-16XRLNB &
STATE ANTELOPE J14-21-16XRLNC
LOCATED IN SECTIONS 16 & 21
T5N, R62W, 6TH P.M.
WELD COUNTY, COLORADO

BONANZA CREEK
410 17th Street, Suite 1400
Denver, Colorado 80202



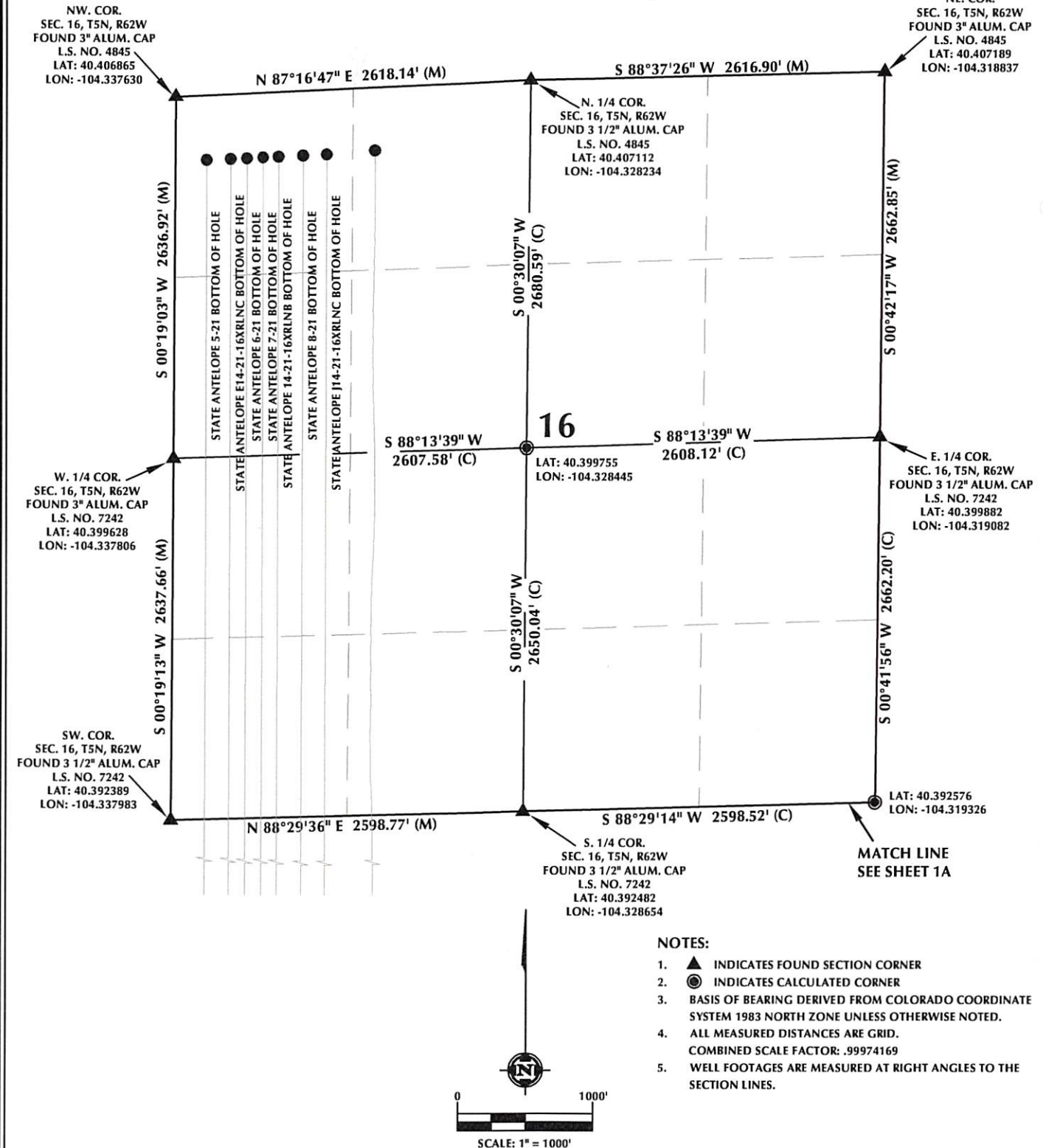
CONSULTING, LLC

SHERIDAN OFFICE
2155 North Main Street
Sheridan, Wyoming 82801
Phone 307-674-0609

LOVELAND OFFICE
1635 Foxtrail Drive, Suite 204
Loveland, Colorado 80538
Phone 970-776-4331

DRAFTED BY: AMK	CHECKED BY: BJR	SHEET NO: 1A
DATE DRAFTED: 12/10/14	DATE SURVEYED: 12/8/14	1A OF 3
REVISED:	FILE NAME: 14-108	

ANTELOPE 14-21 T5N, R62W



WELL PAD - ANTELOPE 14-21

MULTI-WELL PLAN
ANTELOPE E-A-21HNB,
STATE ANTELOPE E14-21-16XRLNC,
STATE ANTELOPE 14-21-16XRLNB &
STATE ANTELOPE J14-21-16XRLNC
LOCATED IN SECTIONS 16 & 21
T5N, R62W, 6TH P.M.
WELD COUNTY, COLORADO

BONANZA CREEK
410 17th Street, Suite 1400
Denver, Colorado 80202



CONSULTING, LLC

SHERIDAN OFFICE
2155 North Main Street
Sheridan, Wyoming 82801
Phone 307-674-0609

LOVELAND OFFICE
1635 Foxtrail Drive, Suite 204
Loveland, Colorado 80538
Phone 970-776-4331

DRAFTED BY: AMK	CHECKED BY: BJR	SHEET NO: 1B
DATE DRAFTED: 12/10/14	DATE SURVEYED: 12/8/14	1B OF 3
REVISED:	FILE NAME: 14-108	