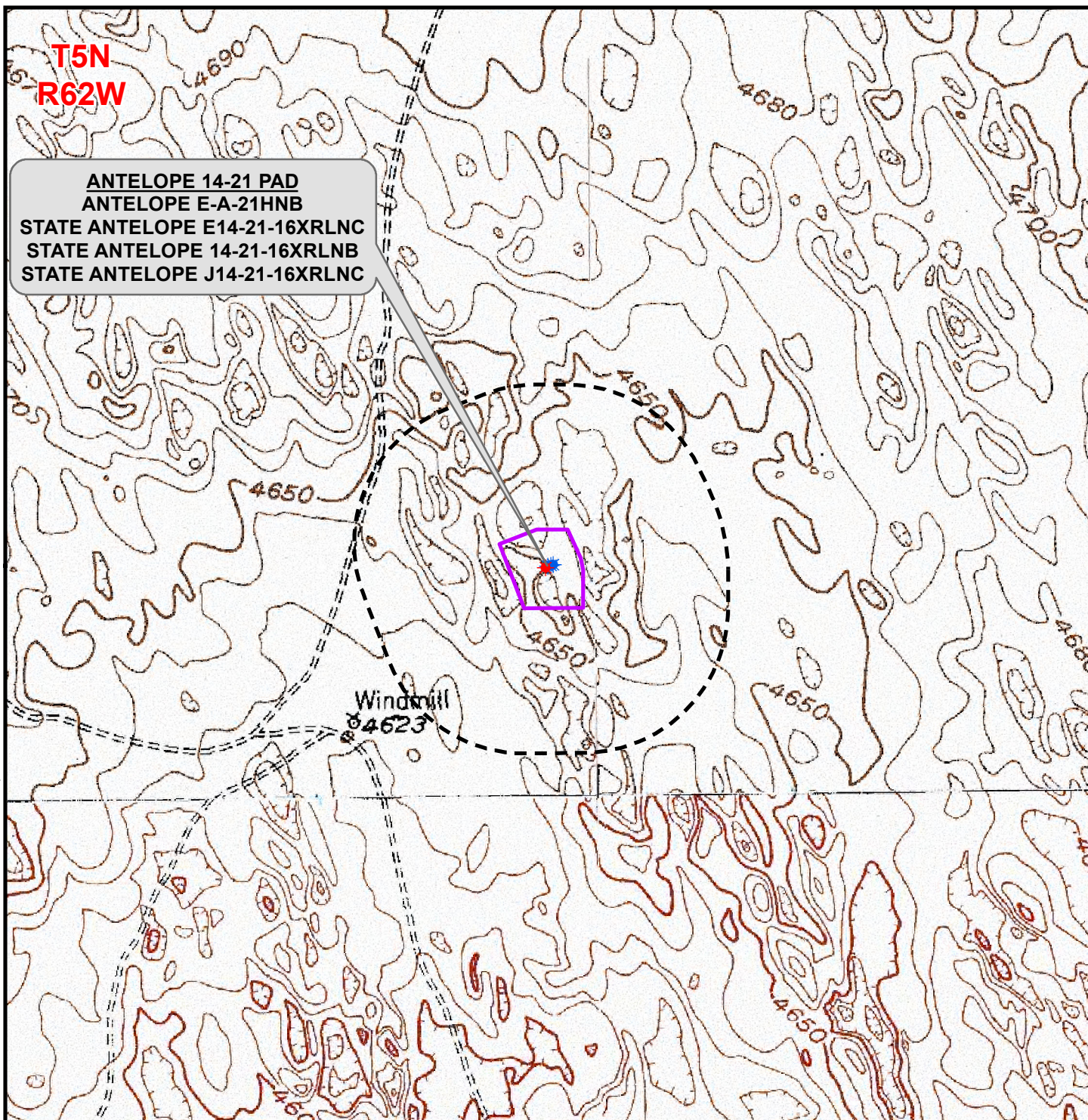


K:\BONANZA CREEK\2014_108_ ANTELOPE_14-21_SEC_21_T5N_R62W\GIS\Maps_ABC\Antelope 14-21 Hydro.mxd 12/3/2014 5:45:05 PM



Legend

-  Well -Proposed
-  Well - State - Proposed
-  Disturbed Area
-  1,000ft Disturbance Buffer

**NO SURFACE WATER FEATURES EXIST WITHIN
±1,000FT OF PROPOSED WELL PAD.**

* All distances measured to reference well:
STATE ANTELOPE E14-21-16XRLNC

WELL PAD - ANTELOPE 14-21

HYDROLOGY MAP
ANTELOPE E-A-21HNB,
STATE ANTELOPE E14-21-16XRLNC,
STATE ANTELOPE 14-21-16XRLNB &
STATE ANTELOPE J14-21-16XRLNC
LOCATED IN SW1/4 SW1/4
SECTION 21, T5N, R62W, 6th P.M.
WELD COUNTY, COLORADO



410 17th Street, Suite 1400
Denver, Colorado 80202



CONSULTING, LLC

SHERIDAN OFFICE 2155 North Main Street
Sheridan, Wyoming 82801
Phone 307-674-0609

LOVELAND OFFICE 1635 Foxtail Drive, Suite 204
Loveland, Colorado 80538
Phone 970-776-4331



SCALE: 1" = 1,000ft

NAD83 CO-Nft

DRAWN: JELO

DATE: 3 Dec 2014

REVISED:

DATE: