

WPX ENERGY ROCKY MOUNTAIN LLC-EBUS

GM 513-33

Cyclone 17

Post Job Summary

Cement Surface Casing

Date Prepared: 10/28/2014

Job Date: 10/12/2014

Submitted by: Aaron Katz – Grand Junction Cement Engineer

The Road to Excellence Starts with Safety

Sold To #: 300721	Ship To #: 3563576	Quote #:	Sales Order #: 0901736015
Customer: WPX ENERGY ROCKY MOUNTAIN LLC-EBUS		Customer Rep: Scott Geary	
Well Name: WPX GM	Well #: 513-33	API/UWI #: 05-045-22492-00	
Field: GRAND VALLEY	City (SAP): PARACHUTE	County/Parish: GARFIELD	State: COLORADO
Legal Description: NW SW-33-6S-96W-2320FSL-1153FWL			
Contractor: CYCLONE		Rig/Platform Name/Num: CYCLONE 17	
Job BOM: 7521			
Well Type: DIRECTIONAL GAS			
Sales Person: HALAMERICA\HB50180		Srvc Supervisor: Carlton Kukus	

Job

Formation Name	
Formation Depth (MD)	Top Bottom
Form Type	BHST
Job depth MD	1034ft Job Depth TVD
Water Depth	Wk Ht Above Floor 5ft
Perforation Depth (MD)	From To

Well Data

Description	New / Used	Size in	ID in	Weight lbm/ft	Thread	Grade	Top MD ft	Bottom MD ft	Top TVD ft	Bottom TVD ft
Casing	New	9.625	9.001	32.3	8 RD	H-40	0	1034	0	1034
Open Hole Section			13.5				0	1034	0	1050

Tools and Accessories

Type	Size in	Qty	Make	Depth ft	Type	Size in	Qty	Make
Guide Shoe	9.625	1		1034	Top Plug	9.625	1	HES
Float Shoe	9.625	1			Bottom Plug	9.625		HES
Float Collar	9.625	1		990	SSR plug set	9.625		HES
Insert Float	9.625				Plug Container	9.625	1	HES
Stage Tool	9.625				Centralizers	9.625		HES

Miscellaneous Materials

Gelling Agt	Conc	Surfactant	Conc	Acid Type	Qty	Conc
Treatment Fld	Conc	Inhibitor	Conc	Sand Type	Size	Qty

Fluid Data

Stage/Plug #: 1										
Fluid #	Stage Type	Fluid Name	Qty	Qty UoM	Mixing Density lbm/gal	Yield ft3/sack	Mix Fluid Gal	Rate bbl/min	Total Mix Fluid Gal	
1	Fresh Water	Fresh Water	20	bbl	8.34			4		
Fluid #	Stage Type	Fluid Name	Qty	Qty UoM	Mixing Density lbm/gal	Yield ft3/sack	Mix Fluid Gal	Rate bbl/min	Total Mix Fluid Gal	
2	VariCem GJ5	VARICEM (TM) CEMENT	125	sack	12.3	2.45		8	14.17	

14.10 Gal		FRESH WATER							
Fluid #	Stage Type	Fluid Name	Qty	Qty UoM	Mixing Density lbm/gal	Yield ft³/sack	Mix Fluid Gal	Rate bbl/mi n	Total Mix Fluid Gal
3	VariCem GJ5	VARICEM (TM) CEMENT	175	sack	12.8	2.18		8	12.11
12.05 Gal		FRESH WATER							
Fluid #	Stage Type	Fluid Name	Qty	Qty UoM	Mixing Density lbm/gal	Yield ft³/sack	Mix Fluid Gal	Rate bbl/mi n	Total Mix Fluid Gal
4	Fresh Water Displacement	Fresh Water Displacement	77.9	bbl	8.34			10	
Cement Left In Pipe		Amount	44 ft		Reason		Shoe Joint		
Comment 20 BBLS OF CEMENT TO SURFACE									

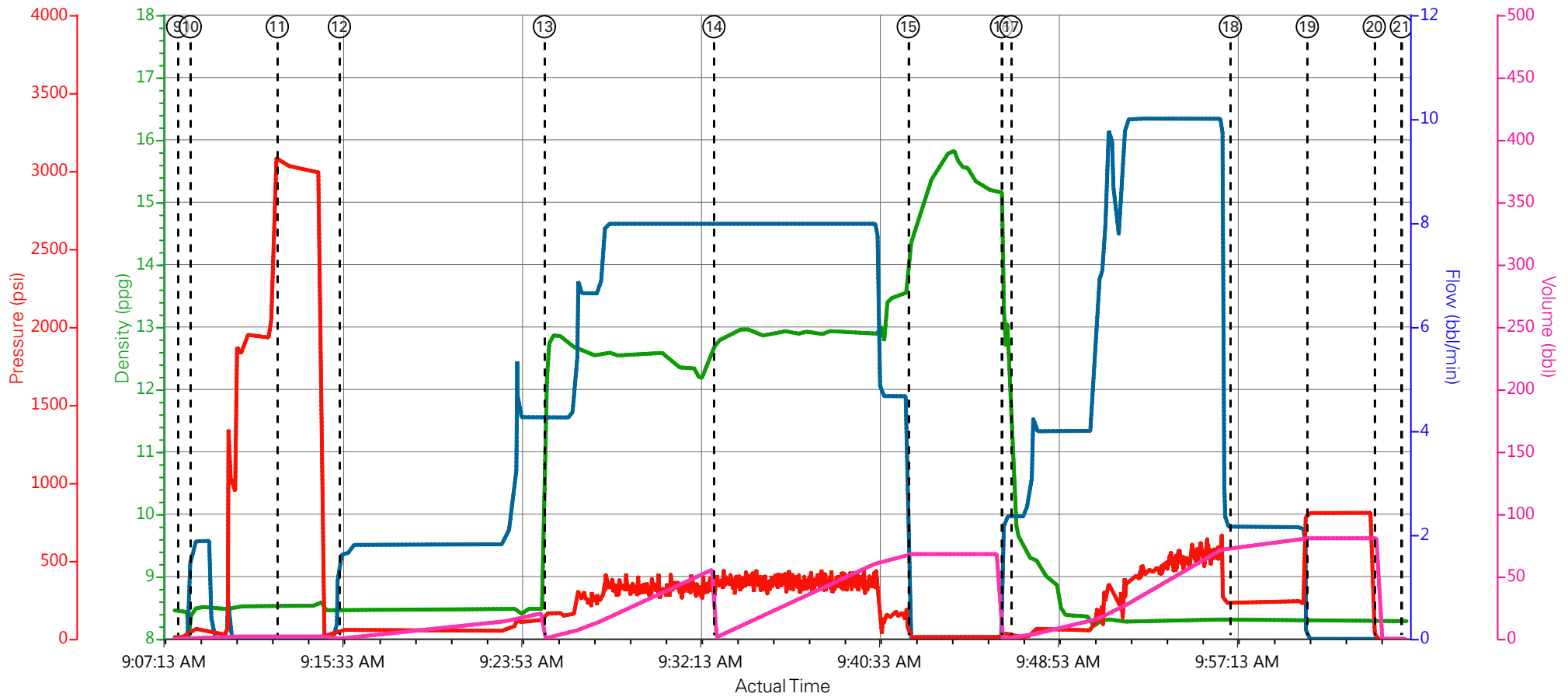
2.0 Real-Time Job Summary

2.1 Job Event Log

Type	Seq. No.	Graph Label	Date	Time	Source	Downhole Density (ppg)	Combined Pump Rate (bbl/min)	Pass-Side Pump Pressure (psi)	Pump Stage Total (bbl)	Comments
Event	1	Call Out	10/11/2014	17:30:00	USER					HES CREW CALLED OUT
Event	2	Pre-Convoy Safety Meeting	10/11/2014	18:15:00	USER					ALL HES CREW TO DISCUSS DRIVING HAZARDS
Event	3	Crew Leave Yard	10/11/2014	18:30:00	USER					1-F-550 PICKUP, 1-ELITE PUMP TRUCK, 1-660 BULK TRUCK
Event	4	Arrive At Loc	10/11/2014	20:00:00	USER					ALL HES CREW AND EQUIPMENT
Event	5	Assessment Of Location Safety Meeting	10/11/2014	20:15:00	USER					RIG WAS STILL DRILLING, HES WAITED TO SPOT EQUIPMENT AND RIG UP
Event	6	Pre-Rig Up Safety Meeting	10/12/2014	07:30:00	USER					ALL HES CREW TO DISCUSS RIG UP HAZARDS AND GO OVER JSA
Event	7	Rig-Up Equipment	10/12/2014	08:00:00	USER					RIG UP IRON TO THE STAND PIPE, WATER HOSES TO UPRIGHT AND DAY TANK
Event	8	Pre-Job Safety Meeting	10/12/2014	08:30:00	USER					ALL HES CREW AND RIG CREW TO DISCUSS JOB PROCEDURES
Event	9	Start Job	10/12/2014	09:08:00	USER	8.45	0.00	11.61	0.0	TD: 1050FT TP: 1034FT SJ: 44FT OH: 13.5 CSG: 9.625 32.3# H-40 MUD WT: 8.8PPG VISC: 75
Event	10	Fill Lines	10/12/2014	09:08:35	USER	8.48	2	54	2	FILL LINES TO PRESSURE TEST
Event	11	Test Lines	10/12/2014	09:12:38	USER	8.54	0	3052	2	PRESSURE TEST TO 3000 PSI, PRESSURE TEST OK
Event	12	Pump Spacer	10/12/2014	09:15:31	USER	8.48	4	120	20	20 BBL FRESH WATER SPACER
Event	13	Pump Lead Cement	10/12/2014	09:25:05	USER	12.3	8	325	54.5	125 SKS OF VARICEM CEMENT 12.3PPG 2.45YIELD 14.17GAL/SK WEIGHT OF CEMENT VERIFIED VIA MUD SCALES THROUGHOUT LEAD CEMENT
Event	14	Pump Tail Cement	10/12/2014	09:32:58	USER	12.8	8	356	67.9	175 SKS OF VARICEM CEMENT 12.8PPG 2.18YIELD 12.11GAL/SK WEIGHT OF CEMENT VERIFIED VIA MUD SCALES THROUGHOUT TAIL CEMENT

Type	Seq. No.	Graph Label	Date	Time	Source	Downhole Density (ppg)	Combined Pump Rate (bbl/min)	Pass-Side Pump Pressure (psi)	Pump Stage Total (bbl)	Comments
Event	15	Shutdown	10/12/2014	09:42:01	USER	12.8	0.00	0	0	SHUTDOWN END OF CEMENT, HES WASHED UP ON TOP OF PLUG
Event	16	Drop Plug	10/12/2014	09:46:22	USER					PLUG AWAY NO PROBLEMS
Event	17	Pump Displacement	10/12/2014	09:46:48	USER	8.34	10	559	67.9	FRESH WATER DISPLACEMENT
Event	18	Slow Rate	10/12/2014	09:57:02	USER	8.29	2	206	10	SLOW RATE TO BUMP PLUG
Event	19	Bump Plug	10/12/2014	10:00:37	USER	8.31	0.00	806.62	77.9	BUMPED PLUG AT 264 PSI TOOK TO 808 PSI
Event	20	Check Floats	10/12/2014	10:03:44	USER	8.28	0.00	0	77.9	FLOATS HELD .5 BBL BACK TO TANKS, 20 BBLS OF CEMENT TO SURFACE, RIG USED 40 POUNDS OF SUGAR
Event	21	End Job	10/12/2014	10:05:00	USER					THANK YOU FOR CHOOSING HALLIBURTON CEMENT CARL KUKUS AND CREW
Event	22	Post-Job Safety Meeting (Pre Rig-Down)	10/12/2014	10:20:00	USER					ALL HES CREW TO DISCUSS HAZARDS
Event	23	Rig-Down Equipment	10/12/2014	10:30:00	USER					RIG DOWN ALL EQUIPMENT AND RACK UP
Event	24	Rig-Down Completed	10/12/2014	10:45:00	USER					RIG DOWN COMPLETED
Event	25	Crew Leave Location	10/12/2014	11:45:00	USER					1-F-550 PICKUP, 1-ELITE PUMP TRUCK, 1-660 BULK TRUCK

WPX-WPX GM 513-33-SURFACE



— DH Density (ppg)
 — Comb Pump Rate (bbl/min)
 — PS Pump Press (psi)
 — Pump Stg Tot (bbl)

- | | | |
|---|---|--|
| ① Call Out n/a;n/a;n/a;n/a | ⑩ Fill Lines 8.48;1.88;77.24;0.38 | ⑲ Bump Plug 8.31;0;806.62;80.63 |
| ② Pre-Convoy Safety Meeting n/a;n/a;n/a;n/a | ⑪ Test Lines 8.54;0;3052.91;1.93 | ⑳ Check Floats 8.28;0;-8.08;80.63 |
| ③ Crew Leave Yard n/a;n/a;n/a;n/a | ⑫ Pump Spacer 8.48;1.62;60.36;0.46 | ㉑ End Job 8.28;0;-11.83;0 |
| ④ Arrive At Loc n/a;n/a;n/a;n/a | ⑬ Pump Lead Cement 12.6;4.26;177.55;0.99 | ㉒ Post-Job Safety Meeting (Pre Rig-Down) n/a;n/a;n/a;n/a |
| ⑤ Assessment Of Location Safety Meeting n/a;n/a;n/a;n/a | ⑭ Pump Tail Cement 12.76;7.98;346.3;1.73 | ㉓ Rig-Down Equipment n/a;n/a;n/a;n/a |
| ⑥ Pre-Rig Up Safety Meeting n/a;n/a;n/a;n/a | ⑮ Shutdown 14.38;0;12.55;67.97 | ㉔ Rig-Down Completed n/a;n/a;n/a;n/a |
| ⑦ Rig-Up Equipment n/a;n/a;n/a;n/a | ⑯ Drop Plug 12.86;2.34;42.55;0.34 | ㉕ Crew Leave Location n/a;n/a;n/a;n/a |
| ⑧ Pre-Job Safety Meeting n/a;n/a;n/a;n/a | ⑰ Pump Displacement 10.07;2.36;15.36;1.36 | |
| ⑨ Start Job 8.45;0;11.61;0 | ⑱ Slow Rate 8.29;2.16;206.61;73.51 | |

▼ **HALLIBURTON** | iCem[®] Service

Created: 2014-10-12 10:46:51, Version: 4.0.248

Edit

Customer: WPX ENERGY ROCKY MOUNTAIN LLC-EBUS

Job Date: 10/12/2014 12:00:00 AM

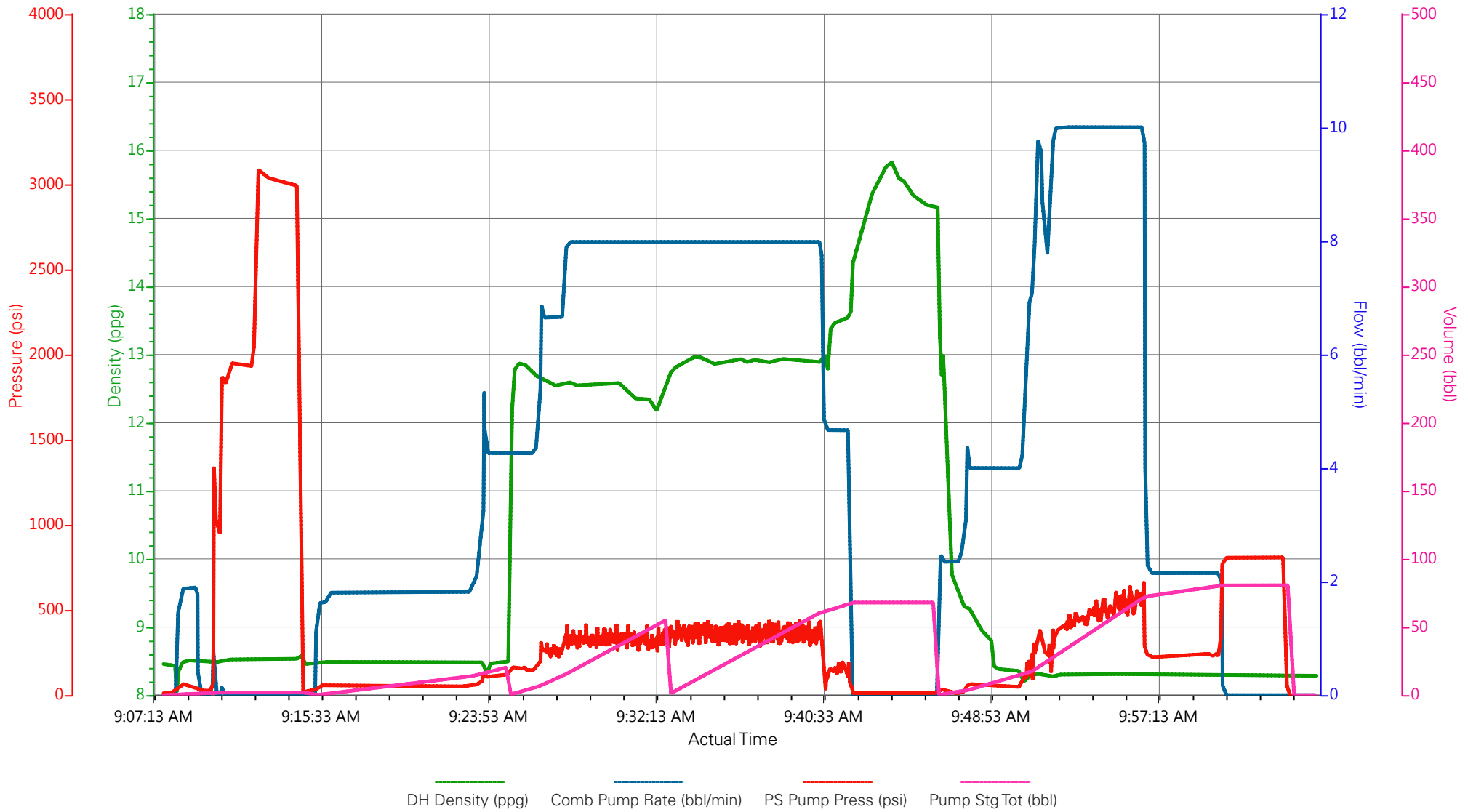
Well: WPX GM 513-33

Representative: Scott Geary

Sales Order #: 901736015

Supervisor/Operator: Carlton Kukus/Kevin Bennett E-7

WPX-WPX GM 513-33-SURFACE



EVENT #	EVENT	VOLUME	SACKS	WEIGHT	YIELD	GAL/ SK
1	Start Job					
6	Test Lines	3000.0				
	Fresh Water Spacer	20.0		8.33		
	Lead Cement	54.5	125	12.3	2.45	14.17
15	Tail Cement	67.9	175	12.8	2.18	12.11
	SHUTDOWN/DROP PLUG	0.0				
23	Displace w/Fresh Water	77.9		8.34		
	SLOW RATE	67.9				
26	Land Plug	251.0		500	OVER	
2	Release Psi / Job Over	0.0				
			Do Not Overdisplace			
DISPLACEMENT	TOTAL PIPE	SHOE JOINT LENGTH	FLOAT COLLAR	BBL/FT	H2O REQ.	
77.90	1034	44.00	990.00	0.0787	192	
PSI to Lift Pipe	398	*****Use Mud Scales on Each Tier*****				
Total Displacement	113.60					
CALCULATED DIFFERENTIAL PSI		251	TOTAL FLUID PUMPED		221	
Collapse		Burst		SO#	901736015	

HALLIBURTON

Water Analysis Report

Company: WPX

Submitted by: Carl Kukus

Attention: J.Trout

Lease GM

Well # 533-13

Date: 10/12/2014

Date Rec.: 1-/12/2014

S.O.# 901736015

Job Type: Surface

Specific Gravity	<i>MAX</i>	1
pH	<i>8</i>	7
Potassium (K)	<i>5000</i>	200 Mg / L
Calcium (Ca)	<i>500</i>	120 Mg / L
Iron (FE2)	<i>300</i>	3 Mg / L
Chlorides (Cl)	<i>3000</i>	0 Mg / L
Sulfates (SO ₄)	<i>1500</i>	200 Mg / L
Chlorine (Cl ₂)		0 Mg / L
Temp	<i>40-80</i>	58 Deg
Total Dissolved Solids		250 Mg / L

Respectfully: Carl Kukus

Title: CEMENTING SUPERVISOR

Location: Grand Junction, CO

NOTICE:

This report is limited to the described sample tested. Any person using or relying on this report agrees that Halliburton shall not be liable for any loss or damage whether due to act or omission resulting from such report or i