

# Synergy Resources

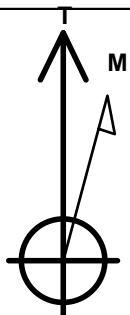
Well Name: **Roberts A-12NHZ**

Surface Location: Roberts 10 Pad Sec.12-T7N-R67W  
North American Datum 1983 , US State Plane 1983 , Colorado Northern Zone  
Ground Elevation: 5137.0

+N/-S	+E/-W	Northing	Easting	Latitude	Longitude	Slot
0.0	0.0	1458287.10	3185298.20	40.589483	-104.832810	
Original Well Elev WELL @ 5150.0ft (Original Well Elev)						

## WELLBORE TARGET DETAILS

Name	TVD	+N/-S	+E/-W	Shape
SHL 2397'FNL & 277'FEL	1.0	0.0	0.0	Point
BHL 1698'FNL & 460'FWL	7219.0	658.0	-4524.5	Point



Azimuths to True North  
Magnetic North: 8.47°

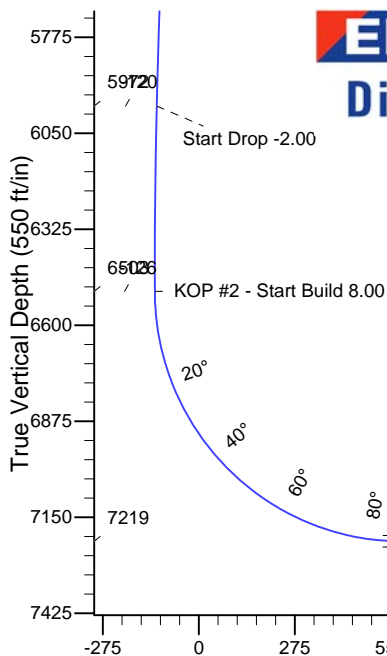
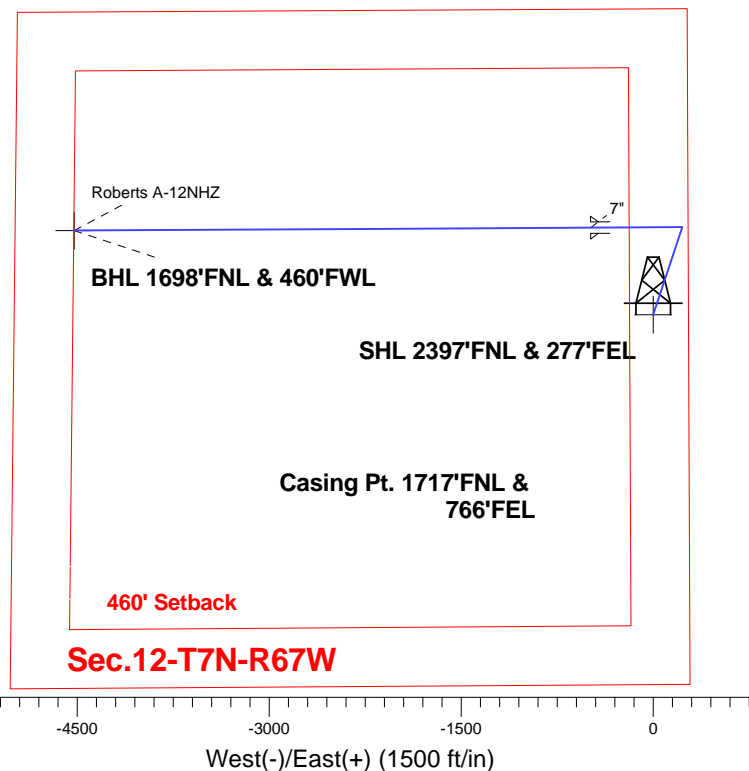
Magnetic Field  
Strength: 52871.5nT  
Dip Angle: 67.08°  
Date: 10/7/2014  
Model: IGRF2010

Roberts 10 Pad Sec.12-T7N-R67W  
Roberts A-12NHZ  
Plan #1 (10-7-14)  
14:28, October 09 2014

## ANNOTATIONS

TVD	MD	Annotation
1200.0	1200.0	KOP - Start Build 2.00
5972.1	6023.0	Start Drop -2.00
6502.8	6555.3	KOP #2 - Start Build 8.00
7219.0	11715.4	TD at 11715.4

South(-)/North(+) (1500 ft/in)



**ENSIGN**  
Directional

## SECTION DETAILS

Sec	MD	Inc	Azi	TVD	+N/-S	+E/-W	DLeg	TFace	VSec	Target
1	0.0	0.00	0.00	0.0	0.0	0.0	0.00	0.00	0.0	
2	1200.0	0.00	0.00	1200.0	0.0	0.0	0.00	0.00	0.0	
3	1629.4	8.59	18.34	1627.8	30.5	10.1	2.00	18.34	-5.6	
4	6023.0	8.59	18.34	5972.2	653.3	216.6	0.00	0.00	-120.3	
5	6452.5	0.00	0.00	6400.0	683.8	226.7	2.00	180.00	-125.9	
6	6555.3	0.00	0.00	6502.8	683.8	226.7	0.00	0.00	-125.9	
7	7680.3	90.00	269.69	7219.0	679.9	-489.5	8.00	269.69	582.2	
8	11715.4	90.00	269.69	7219.0	658.0	-4524.5	0.00	0.00	4572.1	BHL 1698'FNL & 460'FWL

**BHL 1698'FNL & 460'FWL**

Vertical Section at 278.27° (550 ft/in)



## **Synergy Resources**

**SEC.12-T7N-R67W**

**Roberts 10 Pad Sec.12-T7N-R67W**

**Roberts A-12NHZ**

**Wellbore #1**

**Plan: Plan #1 (10-7-14)**

## **Standard Planning Report**

**09 October, 2014**

<b>Database:</b>	Landmark	<b>Local Co-ordinate Reference:</b>	Well Roberts A-12NHZ
<b>Company:</b>	Synergy Resources	<b>TVD Reference:</b>	WELL @ 5150.0ft (Original Well Elev)
<b>Project:</b>	SEC.12-T7N-R67W	<b>MD Reference:</b>	WELL @ 5150.0ft (Original Well Elev)
<b>Site:</b>	Roberts 10 Pad Sec.12-T7N-R67W	<b>North Reference:</b>	True
<b>Well:</b>	Roberts A-12NHZ	<b>Survey Calculation Method:</b>	Minimum Curvature
<b>Wellbore:</b>	Wellbore #1		
<b>Design:</b>	Plan #1 (10-7-14)		

<b>Project</b>	SEC.12-T7N-R67W, Weld, Colorado		
<b>Map System:</b>	US State Plane 1983	<b>System Datum:</b>	Mean Sea Level
<b>Geo Datum:</b>	North American Datum 1983		Using Well Reference Point
<b>Map Zone:</b>	Colorado Northern Zone		Using geodetic scale factor

Site		Roberts 10 Pad Sec.12-T7N-R67W			
Site Position:		Northing:	1,458,387.29ft	Latitude:	40.589758
From:	Lat/Long	Easting:	3,185,297.44ft	Longitude:	-104.832810
Position Uncertainty:	0.0 ft	Slot Radius:	"	Grid Convergence:	0.43 °

Well	Roberts A-12NHZ					
Well Position	+N-S	-100.2 ft	Northing:	1,458,287.10 ft	Latitude:	40.589483
	+E-W	0.0 ft	Easting:	3,185,298.20 ft	Longitude:	-104.832810
Position Uncertainty		0.0 ft	Wellhead Elevation:	ft	Ground Level:	5,137.0 ft

<b>Wellbore</b>	Wellbore #1				
<b>Magnetics</b>	<b>Model Name</b>	<b>Sample Date</b>	<b>Declination (°)</b>	<b>Dip Angle (°)</b>	<b>Field Strength (nT)</b>
	IGRF2010	10/7/2014	8.47	67.08	52,872

<b>Design</b>	Plan #1 (10-7-14)			
<b>Audit Notes:</b>				
<b>Version:</b>	<b>Phase:</b>	PROTOTYPE	<b>Tie On Depth:</b>	0.0
<b>Vertical Section:</b>	<b>Depth From (TVD) (ft)</b>	<b>+N/-S (ft)</b>	<b>+E/-W (ft)</b>	<b>Direction (°)</b>
	0.0	0.0	0.0	278.27

<b>Plan Sections</b>										
Measured Depth (ft)	Inclination (°)	Azimuth (°)	Vertical Depth (ft)	+N/-S (ft)	+E/-W (ft)	Dogleg Rate (°/100ft)	Build Rate (°/100ft)	Turn Rate (°/100ft)	TFO (°)	Target
0.0	0.00	0.00	0.0	0.0	0.0	0.00	0.00	0.00	0.00	
1,200.0	0.00	0.00	1,200.0	0.0	0.0	0.00	0.00	0.00	0.00	
1,629.4	8.59	18.34	1,627.8	30.5	10.1	2.00	2.00	0.00	18.34	
6,023.0	8.59	18.34	5,972.2	653.3	216.6	0.00	0.00	0.00	0.00	
6,452.5	0.00	0.00	6,400.0	683.8	226.7	2.00	-2.00	0.00	180.00	
6,555.3	0.00	0.00	6,502.8	683.8	226.7	0.00	0.00	0.00	0.00	
7,680.3	90.00	269.69	7,219.0	679.9	-489.5	8.00	8.00	0.00	269.69	
11,715.4	90.00	269.69	7,219.0	658.0	-4,524.5	0.00	0.00	0.00	0.00	BHL 1698'FNL & 46

<b>Database:</b>	Landmark	<b>Local Co-ordinate Reference:</b>	Well Roberts A-12NHZ
<b>Company:</b>	Synergy Resources	<b>TVD Reference:</b>	WELL @ 5150.0ft (Original Well Elev)
<b>Project:</b>	SEC.12-T7N-R67W	<b>MD Reference:</b>	WELL @ 5150.0ft (Original Well Elev)
<b>Site:</b>	Roberts 10 Pad Sec.12-T7N-R67W	<b>North Reference:</b>	True
<b>Well:</b>	Roberts A-12NHZ	<b>Survey Calculation Method:</b>	Minimum Curvature
<b>Wellbore:</b>	Wellbore #1		
<b>Design:</b>	Plan #1 (10-7-14)		

Planned Survey									
Measured Depth (ft)	Inclination (°)	Azimuth (°)	Vertical Depth (ft)	+N/-S (ft)	+E/-W (ft)	Vertical Section (ft)	Dogleg Rate (°/100ft)	Build Rate (°/100ft)	Turn Rate (°/100ft)
0.0	0.00	0.00	0.0	0.0	0.0	0.0	0.00	0.00	0.00
100.0	0.00	0.00	100.0	0.0	0.0	0.0	0.00	0.00	0.00
200.0	0.00	0.00	200.0	0.0	0.0	0.0	0.00	0.00	0.00
300.0	0.00	0.00	300.0	0.0	0.0	0.0	0.00	0.00	0.00
400.0	0.00	0.00	400.0	0.0	0.0	0.0	0.00	0.00	0.00
500.0	0.00	0.00	500.0	0.0	0.0	0.0	0.00	0.00	0.00
600.0	0.00	0.00	600.0	0.0	0.0	0.0	0.00	0.00	0.00
700.0	0.00	0.00	700.0	0.0	0.0	0.0	0.00	0.00	0.00
800.0	0.00	0.00	800.0	0.0	0.0	0.0	0.00	0.00	0.00
900.0	0.00	0.00	900.0	0.0	0.0	0.0	0.00	0.00	0.00
1,000.0	0.00	0.00	1,000.0	0.0	0.0	0.0	0.00	0.00	0.00
1,100.0	0.00	0.00	1,100.0	0.0	0.0	0.0	0.00	0.00	0.00
1,200.0	0.00	0.00	1,200.0	0.0	0.0	0.0	0.00	0.00	0.00
KOP - Start Build 2.00									
1,300.0	2.00	18.34	1,300.0	1.7	0.5	-0.3	2.00	2.00	0.00
1,400.0	4.00	18.34	1,399.8	6.6	2.2	-1.2	2.00	2.00	0.00
1,500.0	6.00	18.34	1,499.5	14.9	4.9	-2.7	2.00	2.00	0.00
1,600.0	8.00	18.34	1,598.7	26.5	8.8	-4.9	2.00	2.00	0.00
1,629.4	8.59	18.34	1,627.8	30.5	10.1	-5.6	2.00	2.00	0.00
1,700.0	8.59	18.34	1,697.6	40.5	13.4	-7.5	0.00	0.00	0.00
1,800.0	8.59	18.34	1,796.5	54.7	18.1	-10.1	0.00	0.00	0.00
1,900.0	8.59	18.34	1,895.4	68.8	22.8	-12.7	0.00	0.00	0.00
2,000.0	8.59	18.34	1,994.2	83.0	27.5	-15.3	0.00	0.00	0.00
2,100.0	8.59	18.34	2,093.1	97.2	32.2	-17.9	0.00	0.00	0.00
2,200.0	8.59	18.34	2,192.0	111.4	36.9	-20.5	0.00	0.00	0.00
2,300.0	8.59	18.34	2,290.9	125.5	41.6	-23.1	0.00	0.00	0.00
2,400.0	8.59	18.34	2,389.8	139.7	46.3	-25.7	0.00	0.00	0.00
2,500.0	8.59	18.34	2,488.6	153.9	51.0	-28.3	0.00	0.00	0.00
2,600.0	8.59	18.34	2,587.5	168.1	55.7	-31.0	0.00	0.00	0.00
2,700.0	8.59	18.34	2,686.4	182.3	60.4	-33.6	0.00	0.00	0.00
2,800.0	8.59	18.34	2,785.3	196.4	65.1	-36.2	0.00	0.00	0.00
2,900.0	8.59	18.34	2,884.1	210.6	69.8	-38.8	0.00	0.00	0.00
3,000.0	8.59	18.34	2,983.0	224.8	74.5	-41.4	0.00	0.00	0.00
3,100.0	8.59	18.34	3,081.9	239.0	79.2	-44.0	0.00	0.00	0.00
3,200.0	8.59	18.34	3,180.8	253.1	83.9	-46.6	0.00	0.00	0.00
3,300.0	8.59	18.34	3,279.7	267.3	88.6	-49.2	0.00	0.00	0.00
3,400.0	8.59	18.34	3,378.5	281.5	93.3	-51.8	0.00	0.00	0.00
3,500.0	8.59	18.34	3,477.4	295.7	98.0	-54.4	0.00	0.00	0.00
3,600.0	8.59	18.34	3,576.3	309.8	102.7	-57.1	0.00	0.00	0.00
3,700.0	8.59	18.34	3,675.2	324.0	107.4	-59.7	0.00	0.00	0.00
3,800.0	8.59	18.34	3,774.1	338.2	112.1	-62.3	0.00	0.00	0.00
3,900.0	8.59	18.34	3,872.9	352.4	116.8	-64.9	0.00	0.00	0.00
4,000.0	8.59	18.34	3,971.8	366.5	121.5	-67.5	0.00	0.00	0.00
4,100.0	8.59	18.34	4,070.7	380.7	126.2	-70.1	0.00	0.00	0.00
4,200.0	8.59	18.34	4,169.6	394.9	130.9	-72.7	0.00	0.00	0.00
4,300.0	8.59	18.34	4,268.4	409.1	135.6	-75.3	0.00	0.00	0.00
4,400.0	8.59	18.34	4,367.3	423.2	140.3	-77.9	0.00	0.00	0.00
4,500.0	8.59	18.34	4,466.2	437.4	145.0	-80.6	0.00	0.00	0.00
4,600.0	8.59	18.34	4,565.1	451.6	149.7	-83.2	0.00	0.00	0.00
4,700.0	8.59	18.34	4,664.0	465.8	154.4	-85.8	0.00	0.00	0.00
4,800.0	8.59	18.34	4,762.8	479.9	159.1	-88.4	0.00	0.00	0.00
4,900.0	8.59	18.34	4,861.7	494.1	163.8	-91.0	0.00	0.00	0.00
5,000.0	8.59	18.34	4,960.6	508.3	168.5	-93.6	0.00	0.00	0.00
5,100.0	8.59	18.34	5,059.5	522.5	173.2	-96.2	0.00	0.00	0.00

<b>Database:</b>	Landmark	<b>Local Co-ordinate Reference:</b>	Well Roberts A-12NHZ
<b>Company:</b>	Synergy Resources	<b>TVD Reference:</b>	WELL @ 5150.0ft (Original Well Elev)
<b>Project:</b>	SEC.12-T7N-R67W	<b>MD Reference:</b>	WELL @ 5150.0ft (Original Well Elev)
<b>Site:</b>	Roberts 10 Pad Sec.12-T7N-R67W	<b>North Reference:</b>	True
<b>Well:</b>	Roberts A-12NHZ	<b>Survey Calculation Method:</b>	Minimum Curvature
<b>Wellbore:</b>	Wellbore #1		
<b>Design:</b>	Plan #1 (10-7-14)		

Planned Survey									
Measured Depth (ft)	Inclination (°)	Azimuth (°)	Vertical Depth (ft)	+N/-S (ft)	+E/-W (ft)	Vertical Section (ft)	Dogleg Rate (°/100ft)	Build Rate (°/100ft)	Turn Rate (°/100ft)
5,200.0	8.59	18.34	5,158.4	536.6	177.9	-98.8	0.00	0.00	0.00
5,300.0	8.59	18.34	5,257.2	550.8	182.6	-101.4	0.00	0.00	0.00
5,400.0	8.59	18.34	5,356.1	565.0	187.3	-104.0	0.00	0.00	0.00
5,500.0	8.59	18.34	5,455.0	579.2	192.0	-106.7	0.00	0.00	0.00
5,600.0	8.59	18.34	5,553.9	593.3	196.7	-109.3	0.00	0.00	0.00
5,700.0	8.59	18.34	5,652.7	607.5	201.4	-111.9	0.00	0.00	0.00
5,800.0	8.59	18.34	5,751.6	621.7	206.1	-114.5	0.00	0.00	0.00
5,900.0	8.59	18.34	5,850.5	635.9	210.8	-117.1	0.00	0.00	0.00
6,000.0	8.59	18.34	5,949.4	650.0	215.5	-119.7	0.00	0.00	0.00
6,023.0	8.59	18.34	5,972.1	653.3	216.6	-120.3	0.00	0.00	0.00
Start Drop -2.00									
6,100.0	7.05	18.34	6,048.4	663.2	219.9	-122.1	2.00	-2.00	0.00
6,200.0	5.05	18.34	6,147.8	673.2	223.2	-124.0	2.00	-2.00	0.00
6,300.0	3.05	18.34	6,247.6	679.9	225.4	-125.2	2.00	-2.00	0.00
6,400.0	1.05	18.34	6,347.5	683.3	226.5	-125.8	2.00	-2.00	0.00
6,452.5	0.00	0.00	6,400.0	683.8	226.7	-125.9	2.00	-2.00	0.00
6,500.0	0.00	0.00	6,447.5	683.8	226.7	-125.9	0.00	0.00	0.00
6,555.3	0.00	0.00	6,502.8	683.8	226.7	-125.9	0.00	0.00	0.00
KOP #2 - Start Build 8.00									
6,600.0	3.58	269.69	6,547.5	683.8	225.3	-124.5	8.00	8.00	0.00
6,700.0	11.58	269.69	6,646.5	683.7	212.1	-111.5	8.00	8.00	0.00
6,800.0	19.58	269.69	6,742.8	683.6	185.3	-85.0	8.00	8.00	0.00
6,900.0	27.58	269.69	6,834.4	683.4	145.3	-45.5	8.00	8.00	0.00
7,000.0	35.58	269.69	6,919.5	683.1	93.0	6.3	8.00	8.00	0.00
7,100.0	43.58	269.69	6,996.5	682.7	29.4	69.2	8.00	8.00	0.00
7,200.0	51.58	269.69	7,063.9	682.3	-44.4	142.1	8.00	8.00	0.00
7,300.0	59.58	269.69	7,120.4	681.9	-126.8	223.6	8.00	8.00	0.00
7,400.0	67.58	269.69	7,164.9	681.4	-216.3	312.1	8.00	8.00	0.00
7,500.0	75.58	269.69	7,196.4	680.9	-311.1	405.9	8.00	8.00	0.00
7,600.0	83.58	269.69	7,214.5	680.4	-409.4	503.0	8.00	8.00	0.00
7,680.3	90.00	269.69	7,219.0	679.9	-489.5	582.3	8.00	8.00	0.00
7"									
7,700.0	90.00	269.69	7,219.0	679.8	-509.2	601.7	0.00	0.00	0.00
7,800.0	90.00	269.69	7,219.0	679.3	-609.2	700.6	0.00	0.00	0.00
7,900.0	90.00	269.69	7,219.0	678.7	-709.2	799.5	0.00	0.00	0.00
8,000.0	90.00	269.69	7,219.0	678.2	-809.2	898.4	0.00	0.00	0.00
8,100.0	90.00	269.69	7,219.0	677.6	-909.2	997.3	0.00	0.00	0.00
8,200.0	90.00	269.69	7,219.0	677.1	-1,009.2	1,096.1	0.00	0.00	0.00
8,300.0	90.00	269.69	7,219.0	676.6	-1,109.2	1,195.0	0.00	0.00	0.00
8,400.0	90.00	269.69	7,219.0	676.0	-1,209.2	1,293.9	0.00	0.00	0.00
8,500.0	90.00	269.69	7,219.0	675.5	-1,309.2	1,392.8	0.00	0.00	0.00
8,600.0	90.00	269.69	7,219.0	674.9	-1,409.2	1,491.7	0.00	0.00	0.00
8,700.0	90.00	269.69	7,219.0	674.4	-1,509.2	1,590.5	0.00	0.00	0.00
8,800.0	90.00	269.69	7,219.0	673.8	-1,609.2	1,689.4	0.00	0.00	0.00
8,900.0	90.00	269.69	7,219.0	673.3	-1,709.2	1,788.3	0.00	0.00	0.00
9,000.0	90.00	269.69	7,219.0	672.8	-1,809.2	1,887.2	0.00	0.00	0.00
9,100.0	90.00	269.69	7,219.0	672.2	-1,909.2	1,986.1	0.00	0.00	0.00
9,200.0	90.00	269.69	7,219.0	671.7	-2,009.2	2,084.9	0.00	0.00	0.00
9,300.0	90.00	269.69	7,219.0	671.1	-2,109.2	2,183.8	0.00	0.00	0.00
9,400.0	90.00	269.69	7,219.0	670.6	-2,209.2	2,282.7	0.00	0.00	0.00
9,500.0	90.00	269.69	7,219.0	670.0	-2,309.2	2,381.6	0.00	0.00	0.00
9,600.0	90.00	269.69	7,219.0	669.5	-2,409.2	2,480.4	0.00	0.00	0.00
9,700.0	90.00	269.69	7,219.0	669.0	-2,509.2	2,579.3	0.00	0.00	0.00

<b>Database:</b>	Landmark	<b>Local Co-ordinate Reference:</b>	Well Roberts A-12NHZ
<b>Company:</b>	Synergy Resources	<b>TVD Reference:</b>	WELL @ 5150.0ft (Original Well Elev)
<b>Project:</b>	SEC.12-T7N-R67W	<b>MD Reference:</b>	WELL @ 5150.0ft (Original Well Elev)
<b>Site:</b>	Roberts 10 Pad Sec.12-T7N-R67W	<b>North Reference:</b>	True
<b>Well:</b>	Roberts A-12NHZ	<b>Survey Calculation Method:</b>	Minimum Curvature
<b>Wellbore:</b>	Wellbore #1		
<b>Design:</b>	Plan #1 (10-7-14)		

Planned Survey										
Measured Depth (ft)	Inclination (°)	Azimuth (°)	Vertical Depth (ft)	+N/-S (ft)	+E/-W (ft)	Vertical Section (ft)	Dogleg Rate (°/100ft)	Build Rate (°/100ft)	Turn Rate (°/100ft)	
9,800.0	90.00	269.69	7,219.0	668.4	-2,609.2	2,678.2	0.00	0.00	0.00	
9,900.0	90.00	269.69	7,219.0	667.9	-2,709.2	2,777.1	0.00	0.00	0.00	
10,000.0	90.00	269.69	7,219.0	667.3	-2,809.2	2,876.0	0.00	0.00	0.00	
10,100.0	90.00	269.69	7,219.0	666.8	-2,909.2	2,974.8	0.00	0.00	0.00	
10,200.0	90.00	269.69	7,219.0	666.3	-3,009.2	3,073.7	0.00	0.00	0.00	
10,300.0	90.00	269.69	7,219.0	665.7	-3,109.2	3,172.6	0.00	0.00	0.00	
10,400.0	90.00	269.69	7,219.0	665.2	-3,209.2	3,271.5	0.00	0.00	0.00	
10,500.0	90.00	269.69	7,219.0	664.6	-3,309.2	3,370.4	0.00	0.00	0.00	
10,600.0	90.00	269.69	7,219.0	664.1	-3,409.2	3,469.2	0.00	0.00	0.00	
10,700.0	90.00	269.69	7,219.0	663.5	-3,509.2	3,568.1	0.00	0.00	0.00	
10,800.0	90.00	269.69	7,219.0	663.0	-3,609.2	3,667.0	0.00	0.00	0.00	
10,900.0	90.00	269.69	7,219.0	662.5	-3,709.2	3,765.9	0.00	0.00	0.00	
11,000.0	90.00	269.69	7,219.0	661.9	-3,809.2	3,864.8	0.00	0.00	0.00	
11,100.0	90.00	269.69	7,219.0	661.4	-3,909.2	3,963.6	0.00	0.00	0.00	
11,200.0	90.00	269.69	7,219.0	660.8	-4,009.1	4,062.5	0.00	0.00	0.00	
11,300.0	90.00	269.69	7,219.0	660.3	-4,109.1	4,161.4	0.00	0.00	0.00	
11,400.0	90.00	269.69	7,219.0	659.7	-4,209.1	4,260.3	0.00	0.00	0.00	
11,500.0	90.00	269.69	7,219.0	659.2	-4,309.1	4,359.2	0.00	0.00	0.00	
11,600.0	90.00	269.69	7,219.0	658.7	-4,409.1	4,458.0	0.00	0.00	0.00	
11,700.0	90.00	269.69	7,219.0	658.1	-4,509.1	4,556.9	0.00	0.00	0.00	
11,715.4	90.00	269.69	7,219.0	658.0	-4,524.5	4,572.1	0.00	0.00	0.00	

Targets										
Target Name	Dip Angle (°)	Dip Dir. (°)	TVD (ft)	+N/-S (ft)	+E/-W (ft)	Northing (ft)	Easting (ft)	Latitude	Longitude	
- hit/miss target										
- Shape										
SHL 2397'FNL & 277'	0.00	0.00	1.0	0.0	0.0	1,458,287.11	3,185,298.20	40.589483	-104.832810	
- plan hits target center										
- Point										
BHL 1698'FNL & 460'	0.00	0.00	7,219.0	658.0	-4,524.5	1,458,911.05	3,180,768.97	40.591288	-104.849101	
- plan hits target center										
- Point										

Casing Points						
Measured Depth (ft)	Vertical Depth (ft)	Name			Casing Diameter (")	Hole Diameter (")
7,680.3	7,219.0	7"			7	7-1/2

Plan Annotations					
Measured Depth (ft)	Vertical Depth (ft)	Local Coordinates		Comment	
		+N/-S (ft)	+E/-W (ft)		
1,200.0	1,200.0	0.0	0.0	KOP - Start Build 2.00	
6,023.0	5,972.1	653.3	216.6	Start Drop -2.00	
6,555.3	6,502.8	683.8	226.7	KOP #2 - Start Build 8.00	
11,715.4	7,219.0	658.0	-4,524.5	TD at 11715.4	