

# Synergy Resources

Well Name: **Roberts A-12CHZ**

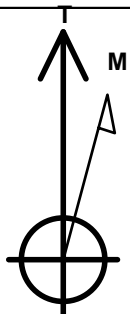
Surface Location: Roberts 10 Pad Sec.12-T7N-R67W  
North American Datum 1983 , US State Plane 1983 , Colorado Northern Zone  
Ground Elevation: 5138.0

+N/-S	+E/-W	Northing	Easting	Latitude	Longitude	Slot
0.0	0.0	1458307.14	3185298.05	40.589538	-104.832810	

Original Well Elev WELL @ 5151.0ft (Original Well Elev)

## WELLBORE TARGET DETAILS

Name	TVD	+N/-S	+E/-W	Shape
SHL 2377'FNL & 277'FEL	1.0	0.0	0.0	Point
BHL 1478'FNL & 460'FWL	7550.0	858.0	-4522.6	Point



Azimuths to True North  
Magnetic North: 8.47°

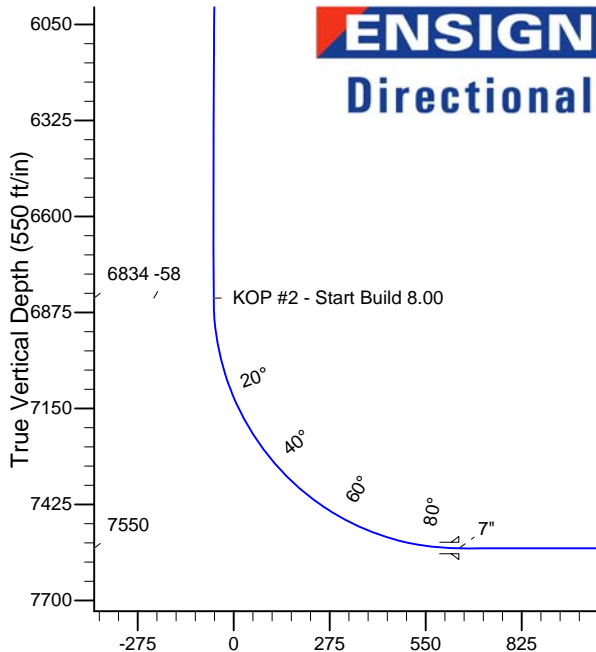
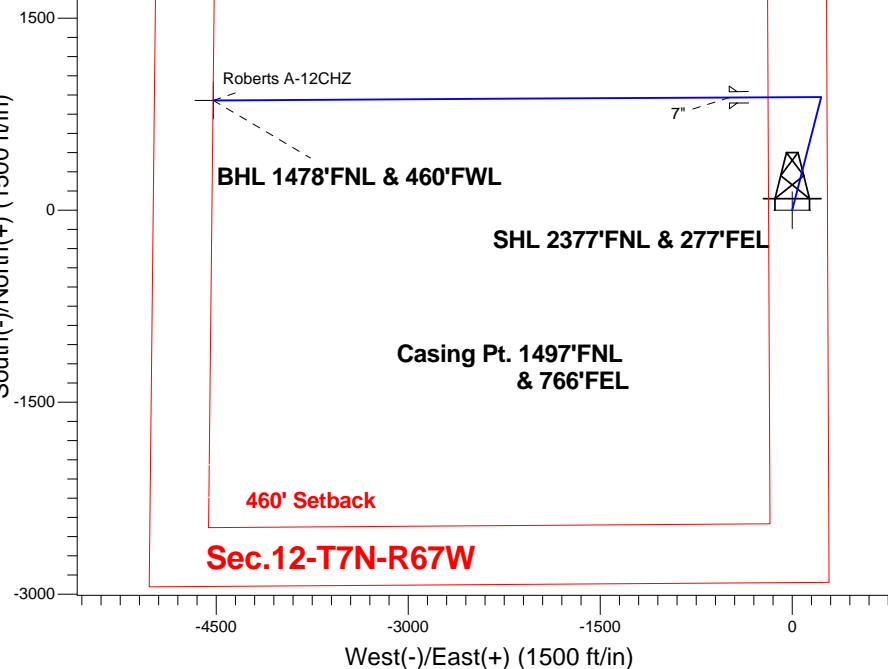
Magnetic Field  
Strength: 52871.5srT  
Dip Angle: 67.08°  
Date: 10/7/2014  
Model: IGRF2010

Roberts 10 Pad Sec.12-T7N-R67W  
Roberts A-12CHZ  
Plan #1 (10-7-14)  
14:04, October 09 2014

## ANNOTATIONS

TVD	MD	Annotation
1000.0	1000.0	KOP - Start Build 2.00
5872.2	5950.9	Start Drop -2.00
6833.8	6915.5	KOP #2 - Start Build 8.00
7550.0	12073.4	TD at 12073.4

South(-)/North(+) (1500 ft/in)



**ENSIGN**  
Directional

## SECTION DETAILS

Sec	MD	Inc	Azi	TVD	+N/-S	+E/-W	DLeg	TFace	VSec	Target
1	0.0	0.00	0.00	0.0	0.0	0.0	0.00	0.00	0.0	
2	1000.0	0.00	0.00	1000.0	0.0	0.0	0.00	0.00	0.0	
3	1530.8	10.62	14.37	1527.8	47.5	12.2	2.00	14.37	-3.1	
4	5950.9	10.62	14.37	5872.2	836.4	214.2	0.00	0.00	-54.6	
5	6481.7	0.00	0.00	6400.0	883.9	226.4	2.00	180.00	-57.7	
6	6915.5	0.00	0.00	6833.8	883.9	226.4	0.00	0.00	-57.7	
7	8040.5	90.00	269.69	7550.0	880.0	-489.8	8.00	269.69	645.2	
8	12073.4	90.00	269.69	7550.0	858.0	-4522.6	0.00	0.00	4603.2	BHL 1478'FNL & 460'FWL



## **Synergy Resources**

**SEC.12-T7N-R67W**

**Roberts 10 Pad Sec.12-T7N-R67W**

**Roberts A-12CHZ**

**Wellbore #1**

**Plan: Plan #1 (10-7-14)**

## **Standard Planning Report**

**09 October, 2014**

<b>Database:</b>	Landmark	<b>Local Co-ordinate Reference:</b>	Well Roberts A-12CHZ
<b>Company:</b>	Synergy Resources	<b>TVD Reference:</b>	WELL @ 5151.0ft (Original Well Elev)
<b>Project:</b>	SEC.12-T7N-R67W	<b>MD Reference:</b>	WELL @ 5151.0ft (Original Well Elev)
<b>Site:</b>	Roberts 10 Pad Sec.12-T7N-R67W	<b>North Reference:</b>	True
<b>Well:</b>	Roberts A-12CHZ	<b>Survey Calculation Method:</b>	Minimum Curvature
<b>Wellbore:</b>	Wellbore #1		
<b>Design:</b>	Plan #1 (10-7-14)		

<b>Project</b>	SEC.12-T7N-R67W, Weld, Colorado		
<b>Map System:</b>	US State Plane 1983	<b>System Datum:</b>	Mean Sea Level
<b>Geo Datum:</b>	North American Datum 1983		Using Well Reference Point
<b>Map Zone:</b>	Colorado Northern Zone		Using geodetic scale factor

Site						Roberts 10 Pad Sec.12-T7N-R67W											
Site Position:						Northing:			1,458,387.29ft			Latitude:			40.589758		
From:			Lat/Long			Easting:			3,185,297.44ft			Longitude:			-104.832810		
Position Uncertainty:			0.0 ft			Slot Radius:			"			Grid Convergence:			0.43 °		

Well	Roberts A-12CHZ					
Well Position	+N/-S	-80.2 ft	Northing:	1,458,307.14 ft	Latitude:	40.589538
	+E/-W	0.0 ft	Easting:	3,185,298.05 ft	Longitude:	-104.832810
Position Uncertainty		0.0 ft	Wellhead Elevation:	ft	Ground Level:	5,138.0 ft

<b>Wellbore</b>	Wellbore #1				
<b>Magnetics</b>	<b>Model Name</b>	<b>Sample Date</b>	<b>Declination (°)</b>	<b>Dip Angle (°)</b>	<b>Field Strength (nT)</b>
	IGRF2010	10/7/2014	8.47	67.08	52,872

<b>Design</b>	Plan #1 (10-7-14)			
<b>Audit Notes:</b>				
<b>Version:</b>	<b>Phase:</b>	PROTOTYPE	<b>Tie On Depth:</b>	0.0
<b>Vertical Section:</b>	<b>Depth From (TVD) (ft)</b>	<b>+N/-S (ft)</b>	<b>+E/-W (ft)</b>	<b>Direction (°)</b>
	0.0	0.0	0.0	280.74

<b>Plan Sections</b>										
Measured Depth (ft)	Inclination (°)	Azimuth (°)	Vertical Depth (ft)	+N/-S (ft)	+E/-W (ft)	Dogleg Rate (°/100ft)	Build Rate (°/100ft)	Turn Rate (°/100ft)	TFO (°)	Target
0.0	0.00	0.00	0.0	0.0	0.0	0.00	0.00	0.00	0.00	
1,000.0	0.00	0.00	1,000.0	0.0	0.0	0.00	0.00	0.00	0.00	
1,530.8	10.62	14.37	1,527.8	47.5	12.2	2.00	2.00	0.00	14.37	
5,950.9	10.62	14.37	5,872.2	836.4	214.2	0.00	0.00	0.00	0.00	
6,481.7	0.00	0.00	6,400.0	883.9	226.4	2.00	-2.00	0.00	180.00	
6,915.5	0.00	0.00	6,833.8	883.9	226.4	0.00	0.00	0.00	0.00	
8,040.5	90.00	269.69	7,550.0	880.0	-489.8	8.00	8.00	0.00	269.69	
12,073.4	90.00	269.69	7,550.0	858.0	-4,522.6	0.00	0.00	0.00	0.00	BHL 1478'FNL & 46

<b>Database:</b>	Landmark	<b>Local Co-ordinate Reference:</b>	Well Roberts A-12CHZ
<b>Company:</b>	Synergy Resources	<b>TVD Reference:</b>	WELL @ 5151.0ft (Original Well Elev)
<b>Project:</b>	SEC.12-T7N-R67W	<b>MD Reference:</b>	WELL @ 5151.0ft (Original Well Elev)
<b>Site:</b>	Roberts 10 Pad Sec.12-T7N-R67W	<b>North Reference:</b>	True
<b>Well:</b>	Roberts A-12CHZ	<b>Survey Calculation Method:</b>	Minimum Curvature
<b>Wellbore:</b>	Wellbore #1		
<b>Design:</b>	Plan #1 (10-7-14)		

Planned Survey									
Measured Depth (ft)	Inclination (°)	Azimuth (°)	Vertical Depth (ft)	+N/-S (ft)	+E/-W (ft)	Vertical Section (ft)	Dogleg Rate (°/100ft)	Build Rate (°/100ft)	Turn Rate (°/100ft)
0.0	0.00	0.00	0.0	0.0	0.0	0.0	0.00	0.00	0.00
100.0	0.00	0.00	100.0	0.0	0.0	0.0	0.00	0.00	0.00
200.0	0.00	0.00	200.0	0.0	0.0	0.0	0.00	0.00	0.00
300.0	0.00	0.00	300.0	0.0	0.0	0.0	0.00	0.00	0.00
400.0	0.00	0.00	400.0	0.0	0.0	0.0	0.00	0.00	0.00
500.0	0.00	0.00	500.0	0.0	0.0	0.0	0.00	0.00	0.00
600.0	0.00	0.00	600.0	0.0	0.0	0.0	0.00	0.00	0.00
700.0	0.00	0.00	700.0	0.0	0.0	0.0	0.00	0.00	0.00
800.0	0.00	0.00	800.0	0.0	0.0	0.0	0.00	0.00	0.00
900.0	0.00	0.00	900.0	0.0	0.0	0.0	0.00	0.00	0.00
1,000.0	0.00	0.00	1,000.0	0.0	0.0	0.0	0.00	0.00	0.00
<b>KOP - Start Build 2.00</b>									
1,100.0	2.00	14.37	1,100.0	1.7	0.4	-0.1	2.00	2.00	0.00
1,200.0	4.00	14.37	1,199.8	6.8	1.7	-0.4	2.00	2.00	0.00
1,300.0	6.00	14.37	1,299.5	15.2	3.9	-1.0	2.00	2.00	0.00
1,400.0	8.00	14.37	1,398.7	27.0	6.9	-1.8	2.00	2.00	0.00
1,500.0	10.00	14.37	1,497.5	42.2	10.8	-2.8	2.00	2.00	0.00
1,530.8	10.62	14.37	1,527.8	47.5	12.2	-3.1	2.00	2.00	0.00
1,600.0	10.62	14.37	1,595.8	59.9	15.3	-3.9	0.00	0.00	0.00
1,700.0	10.62	14.37	1,694.1	77.7	19.9	-5.1	0.00	0.00	0.00
1,800.0	10.62	14.37	1,792.4	95.5	24.5	-6.2	0.00	0.00	0.00
1,900.0	10.62	14.37	1,890.6	113.4	29.0	-7.4	0.00	0.00	0.00
2,000.0	10.62	14.37	1,988.9	131.2	33.6	-8.6	0.00	0.00	0.00
2,100.0	10.62	14.37	2,087.2	149.1	38.2	-9.7	0.00	0.00	0.00
2,200.0	10.62	14.37	2,185.5	166.9	42.8	-10.9	0.00	0.00	0.00
2,300.0	10.62	14.37	2,283.8	184.8	47.3	-12.1	0.00	0.00	0.00
2,400.0	10.62	14.37	2,382.1	202.6	51.9	-13.2	0.00	0.00	0.00
2,500.0	10.62	14.37	2,480.4	220.5	56.5	-14.4	0.00	0.00	0.00
2,600.0	10.62	14.37	2,578.7	238.3	61.0	-15.6	0.00	0.00	0.00
2,700.0	10.62	14.37	2,677.0	256.2	65.6	-16.7	0.00	0.00	0.00
2,800.0	10.62	14.37	2,775.2	274.0	70.2	-17.9	0.00	0.00	0.00
2,900.0	10.62	14.37	2,873.5	291.9	74.8	-19.0	0.00	0.00	0.00
3,000.0	10.62	14.37	2,971.8	309.7	79.3	-20.2	0.00	0.00	0.00
3,100.0	10.62	14.37	3,070.1	327.6	83.9	-21.4	0.00	0.00	0.00
3,200.0	10.62	14.37	3,168.4	345.4	88.5	-22.5	0.00	0.00	0.00
3,300.0	10.62	14.37	3,266.7	363.3	93.0	-23.7	0.00	0.00	0.00
3,400.0	10.62	14.37	3,365.0	381.1	97.6	-24.9	0.00	0.00	0.00
3,500.0	10.62	14.37	3,463.3	399.0	102.2	-26.0	0.00	0.00	0.00
3,600.0	10.62	14.37	3,561.5	416.8	106.8	-27.2	0.00	0.00	0.00
3,700.0	10.62	14.37	3,659.8	434.7	111.3	-28.4	0.00	0.00	0.00
3,800.0	10.62	14.37	3,758.1	452.5	115.9	-29.5	0.00	0.00	0.00
3,900.0	10.62	14.37	3,856.4	470.4	120.5	-30.7	0.00	0.00	0.00
4,000.0	10.62	14.37	3,954.7	488.2	125.0	-31.9	0.00	0.00	0.00
4,100.0	10.62	14.37	4,053.0	506.0	129.6	-33.0	0.00	0.00	0.00
4,200.0	10.62	14.37	4,151.3	523.9	134.2	-34.2	0.00	0.00	0.00
4,300.0	10.62	14.37	4,249.6	541.7	138.8	-35.3	0.00	0.00	0.00
4,400.0	10.62	14.37	4,347.9	559.6	143.3	-36.5	0.00	0.00	0.00
4,500.0	10.62	14.37	4,446.1	577.4	147.9	-37.7	0.00	0.00	0.00
4,600.0	10.62	14.37	4,544.4	595.3	152.5	-38.8	0.00	0.00	0.00
4,700.0	10.62	14.37	4,642.7	613.1	157.0	-40.0	0.00	0.00	0.00
4,800.0	10.62	14.37	4,741.0	631.0	161.6	-41.2	0.00	0.00	0.00
4,900.0	10.62	14.37	4,839.3	648.8	166.2	-42.3	0.00	0.00	0.00
5,000.0	10.62	14.37	4,937.6	666.7	170.8	-43.5	0.00	0.00	0.00
5,100.0	10.62	14.37	5,035.9	684.5	175.3	-44.7	0.00	0.00	0.00

<b>Database:</b>	Landmark	<b>Local Co-ordinate Reference:</b>	Well Roberts A-12CHZ
<b>Company:</b>	Synergy Resources	<b>TVD Reference:</b>	WELL @ 5151.0ft (Original Well Elev)
<b>Project:</b>	SEC.12-T7N-R67W	<b>MD Reference:</b>	WELL @ 5151.0ft (Original Well Elev)
<b>Site:</b>	Roberts 10 Pad Sec.12-T7N-R67W	<b>North Reference:</b>	True
<b>Well:</b>	Roberts A-12CHZ	<b>Survey Calculation Method:</b>	Minimum Curvature
<b>Wellbore:</b>	Wellbore #1		
<b>Design:</b>	Plan #1 (10-7-14)		

Planned Survey									
Measured Depth (ft)	Inclination (°)	Azimuth (°)	Vertical Depth (ft)	+N/-S (ft)	+E/-W (ft)	Vertical Section (ft)	Dogleg Rate (°/100ft)	Build Rate (°/100ft)	Turn Rate (°/100ft)
5,200.0	10.62	14.37	5,134.2	702.4	179.9	-45.8	0.00	0.00	0.00
5,300.0	10.62	14.37	5,232.4	720.2	184.5	-47.0	0.00	0.00	0.00
5,400.0	10.62	14.37	5,330.7	738.1	189.0	-48.2	0.00	0.00	0.00
5,500.0	10.62	14.37	5,429.0	755.9	193.6	-49.3	0.00	0.00	0.00
5,600.0	10.62	14.37	5,527.3	773.8	198.2	-50.5	0.00	0.00	0.00
5,700.0	10.62	14.37	5,625.6	791.6	202.8	-51.7	0.00	0.00	0.00
5,800.0	10.62	14.37	5,723.9	809.5	207.3	-52.8	0.00	0.00	0.00
5,900.0	10.62	14.37	5,822.2	827.3	211.9	-54.0	0.00	0.00	0.00
5,950.9	10.62	14.37	5,872.2	836.4	214.2	-54.6	0.00	0.00	0.00
<b>Start Drop -2.00</b>									
6,000.0	9.63	14.37	5,920.5	844.8	216.4	-55.1	2.00	-2.00	0.00
6,100.0	7.63	14.37	6,019.4	859.3	220.1	-56.1	2.00	-2.00	0.00
6,200.0	5.63	14.37	6,118.7	870.5	223.0	-56.8	2.00	-2.00	0.00
6,300.0	3.63	14.37	6,218.4	878.3	225.0	-57.3	2.00	-2.00	0.00
6,400.0	1.63	14.37	6,318.3	882.8	226.1	-57.6	2.00	-2.00	0.00
6,481.7	0.00	0.00	6,400.0	883.9	226.4	-57.7	2.00	-2.00	0.00
6,500.0	0.00	0.00	6,418.3	883.9	226.4	-57.7	0.00	0.00	0.00
6,600.0	0.00	0.00	6,518.3	883.9	226.4	-57.7	0.00	0.00	0.00
6,700.0	0.00	0.00	6,618.3	883.9	226.4	-57.7	0.00	0.00	0.00
6,800.0	0.00	0.00	6,718.3	883.9	226.4	-57.7	0.00	0.00	0.00
6,900.0	0.00	0.00	6,818.3	883.9	226.4	-57.7	0.00	0.00	0.00
6,915.5	0.00	0.00	6,833.8	883.9	226.4	-57.7	0.00	0.00	0.00
<b>KOP #2 - Start Build 8.00</b>									
7,000.0	6.76	269.69	6,918.1	883.9	221.4	-52.8	8.00	8.00	0.00
7,100.0	14.76	269.69	7,016.2	883.8	202.8	-34.5	8.00	8.00	0.00
7,200.0	22.76	269.69	7,110.8	883.6	170.6	-3.0	8.00	8.00	0.00
7,300.0	30.76	269.69	7,200.1	883.4	125.7	41.2	8.00	8.00	0.00
7,400.0	38.76	269.69	7,282.2	883.0	68.7	97.1	8.00	8.00	0.00
7,500.0	46.76	269.69	7,355.5	882.7	0.9	163.7	8.00	8.00	0.00
7,600.0	54.76	269.69	7,418.7	882.3	-76.5	239.6	8.00	8.00	0.00
7,700.0	62.76	269.69	7,470.6	881.8	-161.9	323.5	8.00	8.00	0.00
7,800.0	70.76	269.69	7,510.0	881.3	-253.8	413.6	8.00	8.00	0.00
7,900.0	78.76	269.69	7,536.3	880.8	-350.2	508.2	8.00	8.00	0.00
8,000.0	86.76	269.69	7,548.9	880.2	-449.3	605.5	8.00	8.00	0.00
8,040.5	90.00	269.69	7,550.0	880.0	-489.8	645.2	8.00	8.00	0.00
<b>7"</b>									
8,100.0	90.00	269.69	7,550.0	879.7	-549.3	703.6	0.00	0.00	0.00
8,200.0	90.00	269.69	7,550.0	879.1	-649.3	801.7	0.00	0.00	0.00
8,300.0	90.00	269.69	7,550.0	878.6	-749.2	899.9	0.00	0.00	0.00
8,400.0	90.00	269.69	7,550.0	878.0	-849.2	998.0	0.00	0.00	0.00
8,500.0	90.00	269.69	7,550.0	877.5	-949.2	1,096.2	0.00	0.00	0.00
8,600.0	90.00	269.69	7,550.0	877.0	-1,049.2	1,194.3	0.00	0.00	0.00
8,700.0	90.00	269.69	7,550.0	876.4	-1,149.2	1,292.5	0.00	0.00	0.00
8,800.0	90.00	269.69	7,550.0	875.9	-1,249.2	1,390.6	0.00	0.00	0.00
8,900.0	90.00	269.69	7,550.0	875.3	-1,349.2	1,488.8	0.00	0.00	0.00
9,000.0	90.00	269.69	7,550.0	874.8	-1,449.2	1,586.9	0.00	0.00	0.00
9,100.0	90.00	269.69	7,550.0	874.2	-1,549.2	1,685.0	0.00	0.00	0.00
9,200.0	90.00	269.69	7,550.0	873.7	-1,649.2	1,783.2	0.00	0.00	0.00
9,300.0	90.00	269.69	7,550.0	873.1	-1,749.2	1,881.3	0.00	0.00	0.00
9,400.0	90.00	269.69	7,550.0	872.6	-1,849.2	1,979.5	0.00	0.00	0.00
9,500.0	90.00	269.69	7,550.0	872.1	-1,949.2	2,077.6	0.00	0.00	0.00
9,600.0	90.00	269.69	7,550.0	871.5	-2,049.2	2,175.8	0.00	0.00	0.00
9,700.0	90.00	269.69	7,550.0	871.0	-2,149.2	2,273.9	0.00	0.00	0.00

<b>Database:</b>	Landmark	<b>Local Co-ordinate Reference:</b>	Well Roberts A-12CHZ
<b>Company:</b>	Synergy Resources	<b>TVD Reference:</b>	WELL @ 5151.0ft (Original Well Elev)
<b>Project:</b>	SEC.12-T7N-R67W	<b>MD Reference:</b>	WELL @ 5151.0ft (Original Well Elev)
<b>Site:</b>	Roberts 10 Pad Sec.12-T7N-R67W	<b>North Reference:</b>	True
<b>Well:</b>	Roberts A-12CHZ	<b>Survey Calculation Method:</b>	Minimum Curvature
<b>Wellbore:</b>	Wellbore #1		
<b>Design:</b>	Plan #1 (10-7-14)		

Planned Survey										
Measured Depth (ft)	Inclination (°)	Azimuth (°)	Vertical Depth (ft)	+N/-S (ft)	+E/-W (ft)	Vertical Section (ft)	Dogleg Rate (°/100ft)	Build Rate (°/100ft)	Turn Rate (°/100ft)	
9,800.0	90.00	269.69	7,550.0	870.4	-2,249.2	2,372.1	0.00	0.00	0.00	
9,900.0	90.00	269.69	7,550.0	869.9	-2,349.2	2,470.2	0.00	0.00	0.00	
10,000.0	90.00	269.69	7,550.0	869.3	-2,449.2	2,568.3	0.00	0.00	0.00	
10,100.0	90.00	269.69	7,550.0	868.8	-2,549.2	2,666.5	0.00	0.00	0.00	
10,200.0	90.00	269.69	7,550.0	868.2	-2,649.2	2,764.6	0.00	0.00	0.00	
10,300.0	90.00	269.69	7,550.0	867.7	-2,749.2	2,862.8	0.00	0.00	0.00	
10,400.0	90.00	269.69	7,550.0	867.2	-2,849.2	2,960.9	0.00	0.00	0.00	
10,500.0	90.00	269.69	7,550.0	866.6	-2,949.2	3,059.1	0.00	0.00	0.00	
10,600.0	90.00	269.69	7,550.0	866.1	-3,049.2	3,157.2	0.00	0.00	0.00	
10,700.0	90.00	269.69	7,550.0	865.5	-3,149.2	3,255.4	0.00	0.00	0.00	
10,800.0	90.00	269.69	7,550.0	865.0	-3,249.2	3,353.5	0.00	0.00	0.00	
10,900.0	90.00	269.69	7,550.0	864.4	-3,349.2	3,451.6	0.00	0.00	0.00	
11,000.0	90.00	269.69	7,550.0	863.9	-3,449.2	3,549.8	0.00	0.00	0.00	
11,100.0	90.00	269.69	7,550.0	863.3	-3,549.2	3,647.9	0.00	0.00	0.00	
11,200.0	90.00	269.69	7,550.0	862.8	-3,649.2	3,746.1	0.00	0.00	0.00	
11,300.0	90.00	269.69	7,550.0	862.3	-3,749.2	3,844.2	0.00	0.00	0.00	
11,400.0	90.00	269.69	7,550.0	861.7	-3,849.2	3,942.4	0.00	0.00	0.00	
11,500.0	90.00	269.69	7,550.0	861.2	-3,949.2	4,040.5	0.00	0.00	0.00	
11,600.0	90.00	269.69	7,550.0	860.6	-4,049.2	4,138.7	0.00	0.00	0.00	
11,700.0	90.00	269.69	7,550.0	860.1	-4,149.2	4,236.8	0.00	0.00	0.00	
11,800.0	90.00	269.69	7,550.0	859.5	-4,249.2	4,334.9	0.00	0.00	0.00	
11,900.0	90.00	269.69	7,550.0	859.0	-4,349.2	4,433.1	0.00	0.00	0.00	
12,000.0	90.00	269.69	7,550.0	858.4	-4,449.2	4,531.2	0.00	0.00	0.00	
12,073.4	90.00	269.69	7,550.0	858.0	-4,522.6	4,603.2	0.00	0.00	0.00	

Targets									
Target Name	Dip Angle (°)	Dip Dir. (°)	TVD (ft)	+N/-S (ft)	+E/-W (ft)	Northing (ft)	Easting (ft)	Latitude	Longitude
- hit/miss target									
- Shape									
BHL 1478'FNL & 460'	0.00	0.00	7,550.0	858.0	-4,522.6	1,459,131.11	3,180,769.29	40.591892	-104.849094
- plan hits target center									
- Point									
SHL 2377'FNL & 277'	0.00	0.00	1.0	0.0	0.0	1,458,307.15	3,185,298.05	40.589538	-104.832810
- plan hits target center									
- Point									

Casing Points					
Measured Depth (ft)	Vertical Depth (ft)	Name		Casing Diameter (")	Hole Diameter (")
8,040.5	7,550.0	7"		7	7-1/2

<b>Database:</b>	Landmark	<b>Local Co-ordinate Reference:</b>	Well Roberts A-12CHZ
<b>Company:</b>	Synergy Resources	<b>TVD Reference:</b>	WELL @ 5151.0ft (Original Well Elev)
<b>Project:</b>	SEC.12-T7N-R67W	<b>MD Reference:</b>	WELL @ 5151.0ft (Original Well Elev)
<b>Site:</b>	Roberts 10 Pad Sec.12-T7N-R67W	<b>North Reference:</b>	True
<b>Well:</b>	Roberts A-12CHZ	<b>Survey Calculation Method:</b>	Minimum Curvature
<b>Wellbore:</b>	Wellbore #1		
<b>Design:</b>	Plan #1 (10-7-14)		

Plan Annotations				
Measured Depth (ft)	Vertical Depth (ft)	Local Coordinates		Comment
		+N/-S (ft)	+E/-W (ft)	
1,000.0	1,000.0	0.0	0.0	KOP - Start Build 2.00
5,950.9	5,872.2	836.4	214.2	Start Drop -2.00
6,915.5	6,833.8	883.9	226.4	KOP #2 - Start Build 8.00
12,073.4	7,550.0	858.0	-4,522.6	TD at 12073.4