

The Road to Excellence Starts with Safety

Sold To #: 338668	Ship To #: 2787561	Quote #: 0021998478	Sales Order #: 0902109284
Customer: CHEVRON - MID-CONTINENT EBIZ		Customer Rep: Loren	
Well Name: Beezly	Well #: 2-22	API/UWI #:	
Field:	City (SAP): RANGELY	County/Parish: RIO BLANCO	State: COLORADO
Legal Description:			
Contractor:		Rig/Platform Name/Num: Workover	
Job BOM: 14099			
Well Type: GAS			
Sales Person: HALAMERICA\HX20741		Srv Supervisor: Adam Covington	
Job			

Formation Name	
Formation Depth (MD)	Top Bottom
Form Type	BHST
Job depth MD	1800ft Job Depth TVD
Water Depth	Wk Ht Above Floor
Perforation Depth (MD)	From 1795 ft To 1800 ft

Well Data										
Description	New / Used	Size in	ID in	Weight lbm/ft	Thread	Grade	Top MD ft	Bottom MD ft	Top TVD ft	Bottom TVD ft
Casing		10.75	10.05	40.5			0	1751		
Casing		7	6.366	23			0	1800		
Open Hole Section			10.75				1751	1800		

Tools and Accessories									
Type	Size in	Qty	Make	Depth ft	Type	Size in	Qty	Make	
Guide Shoe	7			1800	Top Plug	7	1	HES	
Float Shoe	7				Bottom Plug	7		HES	
Float Collar	7				SSR plug set	7		HES	
Insert Float	7				Plug Container	7		HES	
Stage Tool	7				Centralizers	7		HES	

Miscellaneous Materials										
Gelling Agt		Conc		Surfactant		Conc		Acid Type		Qty
Treatment Fld		Conc		Inhibitor		Conc		Sand Type		Size
										Qty

Fluid Data										
Stage/Plug #: 1										
Fluid #	Stage Type	Fluid Name	Qty	Qty UoM	Mixing Density lbm/gal	Yield ft3/sack	Mix Fluid Gal	Rate bbl/min	Total Mix Fluid Gal	
1	Water Spacer	Water Spacer	10	bbl	8.34			3		
Fluid #	Stage Type	Fluid Name	Qty	Qty UoM	Mixing Density lbm/gal	Yield ft3/sack	Mix Fluid Gal	Rate bbl/min	Total Mix Fluid Gal	
2	Primary Cement	HALCEM (TM) SYSTEM	200	sack	15.8	1.15		2	4.98	

4.91 Gal		FRESH WATER							
Fluid #	Stage Type	Fluid Name	Qty	Qty UoM	Mixing Density lbm/gal	Yield ft3/sack	Mix Fluid Gal	Rate bbl/min	Total Mix Fluid Gal
3	Water Displacement	Water Displacement	65	bbl	8.34			3	
Cement Left In Pipe		Amount	100 ft		Reason		Shoe Joint		
Comment									

HALLIBURTON

Customer: CHEVRON - MID-CONTINENT EBIZ
Job: Chevron Beezly 2-22 Re-cement Squeeze 902109284
Case: Case 1

1.2 Job Event Log

Type	Seq. No.	Activity	Graph Label	Date	Time	Source	Pass-Side Pump Pressure (psi)	Downhole Density (ppg)	Combined Pump Rate (bbl/min)	Comments
Event	1	Call Out	Call Out	2/3/2015	06:00:00	USER				CREW WAS CALLED OUT
Event	2	Pre-Convoy Safety Meeting	Pre-Convoy Safety Meeting	2/3/2015	08:30:00	USER				MET WITH HES CREW MEMBERS. DISCUSSED DIRECTIONS, SPEED LIMITS AND WILDLIFE.
Event	3	Arrive At Loc	Arrive At Loc	2/3/2015	10:15:00	USER				ARRIVED AT LOCATION.
Event	4	Assessment Of Location Safety Meeting	Assessment Of Location Safety Meeting	2/3/2015	10:45:00	USER				MET WITH HES CREW MEMBERS. DISCUSSED SITE CONDITIONS, WHERE TO SPOT AND IDENTIFIED HAZARDS.
Event	5	Pre-Rig Up Safety Meeting	Pre-Rig Up Safety Meeting	2/3/2015	11:15:00	USER				MET WITH ALL HES CREW MEMBERS. DISCUSSED SWINGS, TEAM LIFTS AND PINCH POINTS.
Event	6	Rig-Up Equipment	Rig-Up Equipment	2/3/2015	11:30:00	USER				CREW STARTED RIGGING UP IRON, BULK AND WATER. HAD TO WAIT ON WATER TRUCK.
Event	7	Rig-Up Completed	Rig-Up Completed	2/3/2015	12:30:00	USER	-1.00	0.26	0.00	RIGGED UP ALL IRON, WATER, AND BULK LINES. NO INCIDENTS.
Event	8	Pre-Job Safety Meeting	Pre-Job Safety Meeting	2/3/2015	12:50:00	USER	1.00	0.28	0.00	MET WITH ALL HES CREW MEMBERS, RIG CREW MEMBERS AND COMPANY MEN. DISCUSSED JOB PROCEDURE, PRESSURES AND RED ZONE.

HALLIBURTON

Customer: CHEVRON - MID-CONTINENT EBIZ
 Job: Chevron Beezly 2-22 Re-cement Squeeze 902109284
 Case: Case 1

Event	9	Test Lines	Test Lines	2/3/2015	13:39:14	COM5	2156.00	8.43	0.00	TESTED LINES TO 2,000 PSI. HELD FOR 3 MINUTES.
Event	10	Other	Injection Test	2/3/2015	13:43:16	COM5	418.00	8.36	0.50	PUMPED 10 BBLs OF FRESH WATER. .5 BPM, 425 PSI. 1 BPM 500 PSI. 2 BPM 525 PSI.
Event	11	Check Weight	Check weight	2/3/2015	13:51:00	COM5	283.00	8.39	0.00	WEIGHED UP AT 15.8#
Event	12	Pump Cement	Pump Cement	2/3/2015	13:53:34	COM5	424.00	8.35	2.20	PUMPED 41 BBLs, 200 SKS OF 15.8#, 1.15 Y, 4.98 WT. OF PRIMARY CEMENT.
Event	13	Drop Top Plug	Drop Top Plug	2/3/2015	14:19:00	USER	3.00	9.70	0.00	DROPPED 7" HALLIBURTON TOP PLUG. CO. MAN WITNESSED.
Event	14	Pump Displacement	Pump Displacement	2/3/2015	14:21:27	COM5	8.00	9.95	2.00	PUMPED 65 BBLs TOTAL OF FRESH WATER DISPLACEMENT.
Event	15	Shutdown	Shutdown	2/3/2015	15:11:00	COM5	586.00	8.38	0.50	PUMPED 63 BBLs OF FRESH WATER DISPLACEMENT. SHUTDOWN TO HESITATE.
Event	16	Other	Pump Displacement	2/3/2015	15:21:00	USER	410.00	8.41	0.00	STARTED PUMPING AFTER HESITATION.
Event	17	Shutdown	Shutdown	2/3/2015	15:27:24	COM5	512.00	8.42	0.00	PUMPED 1 BBL OF FRESH WATER DISPLACEMENT AND SHUT DOWN TO HESITATE. WENT UP TO 700 PSI.
Event	18	Other	Pump Displacement	2/3/2015	15:29:00	USER	478.00	8.38	0.00	STARTED PUMPING AFTER HESITATION.
Event	19	Shutdown	Shutdown	2/3/2015	15:33:39	COM5	735.00	8.36	0.00	PUMPED .25 BBL OF

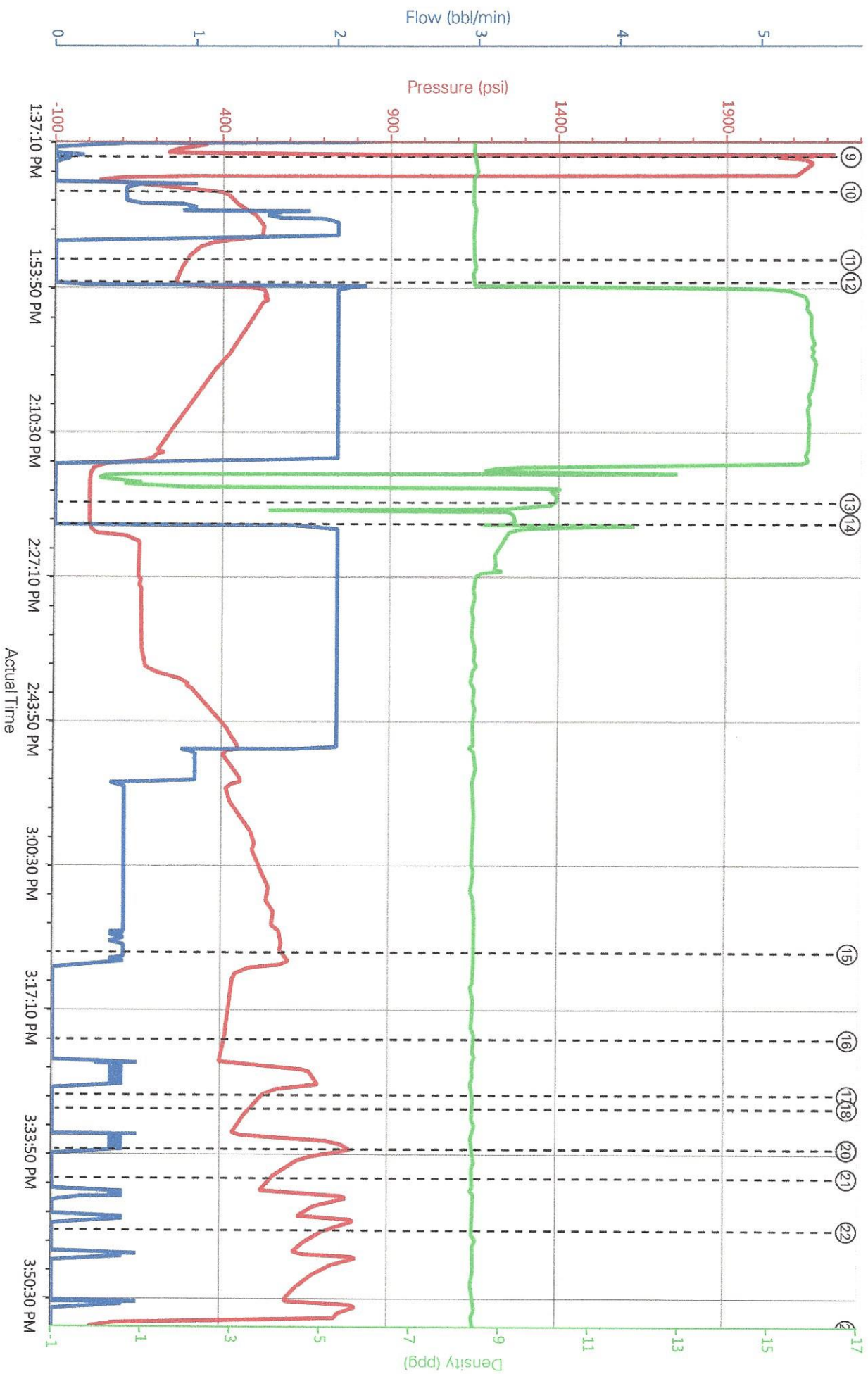
iCem Service

HALLIBURTON

Customer: CHEVRON - MID-CONTINENT EBIZ
Job: Chevron Beezly 2-22 Re-cement Squeeze 902109284
Case: Case 1

FRESH WATER DISPLACEMENT. PRESSURE WENT TO 636 PSI.									
Event	20	Other	Pump Displacement	2/3/2015	15:33:40	USER	729.00	8.36	0.00
STARTED PUMPING AFTER HESITATION.									
Event	21	Shutdown	Shutdown	2/3/2015	15:37:00	USER	540.00	8.35	0.00
PUMPED .25 BBL OF FRESH WATER DISPLACEMENT AND SHUT DOWN.									
Event	22	Other	Pressure Up On Well	2/3/2015	15:43:00	USER	690.00	8.38	0.00
PRESSURED WELL BACK UP TO 800 PSI.									
Event	23	End Job	End Job	2/3/2015	15:54:24	COMS	8.00	8.46	0.00
END JOB									
Event	24	Pre-Rig Down Safety Meeting	Pre-Rig Down Safety Meeting	2/3/2015	16:05:00	USER	MET WITH ALL HES EMPLOYEES. DISCUSSED PRESSURE, SWINGS AND TEAM LIFTS.		
Event	25	Rig-Down Equipment	Rig-Down Equipment	2/3/2015	16:15:00	USER	CREW TO RIG DOWN ALL EQUIPMENT.		
Event	26	Rig-Down Completed	Rig-Down Completed	2/3/2015	16:50:01	USER	CREW RIGGED DOWN ALL IRON, BULK AND WATER LINES. NO INCIDENTS.		
Event	27	Depart Location Safety Meeting	Depart Location Safety Meeting	2/3/2015	17:30:00	USER	MET WITH CREW AND DISCUSSED DRIVING CONDITIONS, SPEED LIMITS AND OTHER VEHICLES.		
Event	28	Depart Location	Depart Location	2/3/2015	17:40:00	USER	THANK YOU FOR CHOOSING HALLIBURTON. JOB WAS COMPLETED SAFELY BY ADAM COVINGTON AND CREW		

Chevron Beezly 2-22 Re-cement Squeeze 902109284



PS Pump Press (psi) 8 DH Density (ppg) 8.41 Comb Pump Rate (bbl/min) 0

HALLIBURTON | iCem® Service

Customer : CHEVRON - MID-CONTINENT EBIZ
Representative : Adam Covington

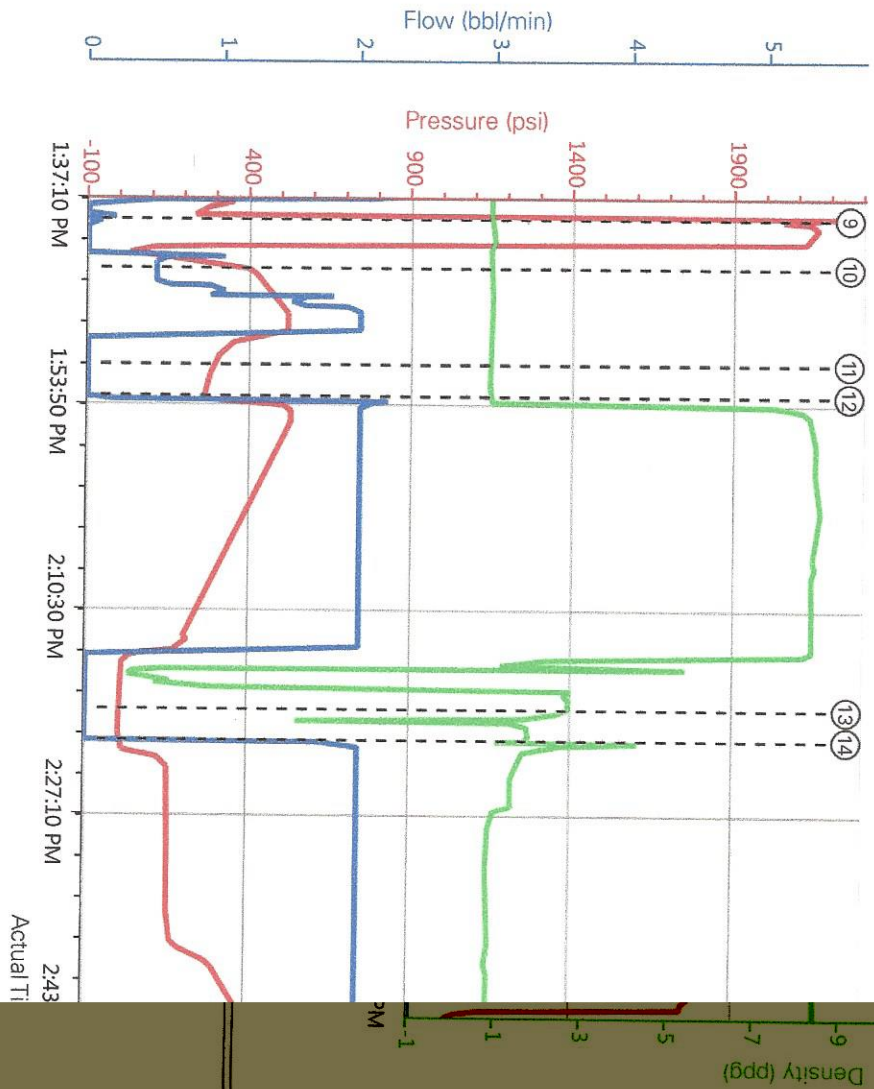
Job Date : 2/3/2015 11:59:24 AM
Sales Order # : 902109284

Well : Beezly
Red Tiger : 11501021

Created: 2015-02-03 11:57:39, Version: 4.1.85

Edit

Chevron Beezly 2-22 Re-cep



PS Pump Press (psi) 8 DH Density (ppg)

- 1 Call Out n/a;n/a;n/a
- 2 Pre-Convoy Safety Meeting n/a;n/a;n/a
- 3 Arrive At Loc n/a;n/a;n/a
- 4 Assessment Of Location Safety Meeting n/a;n/a;n/a
- 5 Pre-Rig Up Safety Meeting n/a;n/a;n/a
- 6 Rig-Up Equipment n/a;n/a;n/a
- 7 Rig-Up Completed -1;0;26;0
- 8 Pre-Job Safety Meeting 1;0;28;0
- 9 Test Lines 2156;8;43;0
- 10 Injection Test 418;8;36;0.5
- 11 Check weight 283;8;39;0
- 12 Pump Cement 424;8;35;2.2
- 13 Drop Top Plug 3;9;7;0
- 14 Pump Displacement 8;9;95;2
- 15 Shutdown 586;8;38;0.5
- 16 Pump Displacement 410;8;41;0
- 17 Shutdown 512;8;42;0
- 18 Pump Displacement 478;8;38;0
- 19 Shutdown 735;8;36;0
- 20 Pump Displacement 729;8;36;0

HALLIBURTON | iCem® Service

Customer: CHEVRON - MID-CONTINENT EBIZ
Representative: Adam Covington
Job Date: 2/3/2015 11:59:24 AM
Sales Order #: 902109284

h:mm) 50 Bc (hh:mm) 70 Bc (hh:mm) 100 Bc (hh:mm)

Temp (°F) Pressure (psi) Reached in (min) Start BC 30 Bc (hh:mm) 40 Bc (hh:mm)

00:57 2:18 4:34

80 1100 16 28.2 00:00 00:23

Vernal

Fields

Values	Events	Results
pe Cased Hole Plug	30.00 Bc	00h:00m
t Type Type II/V	40.00 Bc	00h:23m
t Weight Standard	50.00 Bc	00h:57m
ate 02/03/15	70.00 Bc	02h:18m
me 06:37 AM	100.00 Bc	04h:34m
Units degF	00h:30m	37.55
ve Units PSI	01h:00m	50.99
sion 2.0.2.206	01h:30m	58.97

-140 -7500

Project Name	Chevron 2215068-1
Test ID	2215068-1
Request ID	HPHT #8
Tested by	AH
Customer	Chevron
Well No	Beezly 2-22
Rig	W/O
Casing/Liner Size	7

