

Existing

KB=16'

Proposed

Wardell 20-45

(Spud 9/13/06)

API: 05-123-23988

KB: 4907'

GL: 4891'

Casing Size/Depth: 8-5/8", 24#/ft @

Fox Hills Marker

Sussex Producing within 1 mi?

Shannon Producing within 1 mi?

Primary Lead TOC

Sussex Top

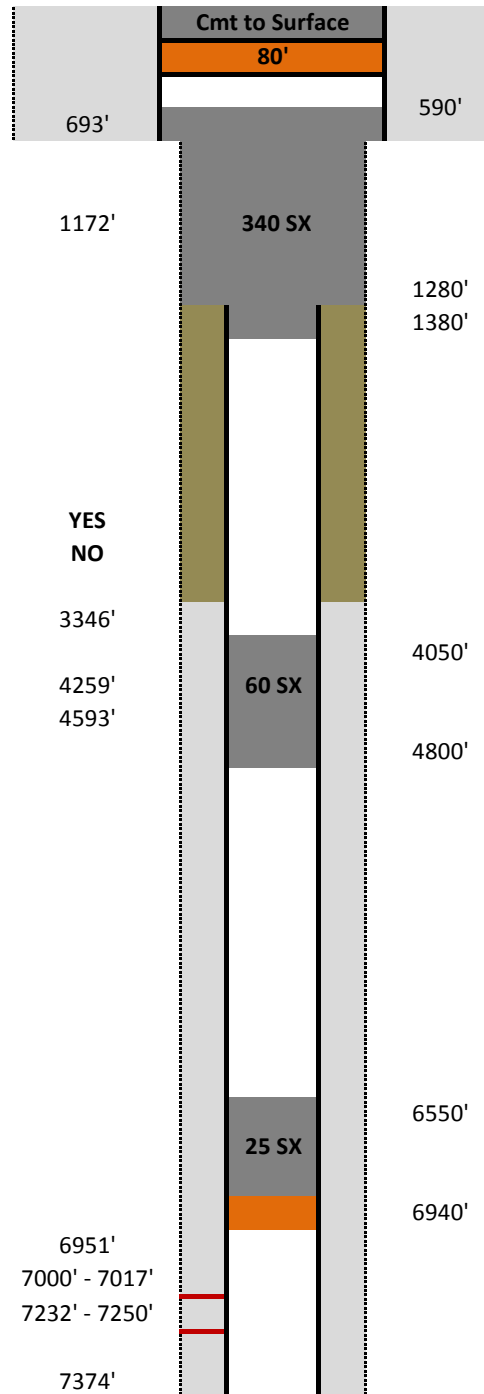
Sussex Base

Niobrara Top

Niobrara Perfs

Codell Perfs

Casing Size/Depth: 4-1/2", 11.6 #/ft @



Existing Cement

New Cement

Drilling Mud

New CIBP