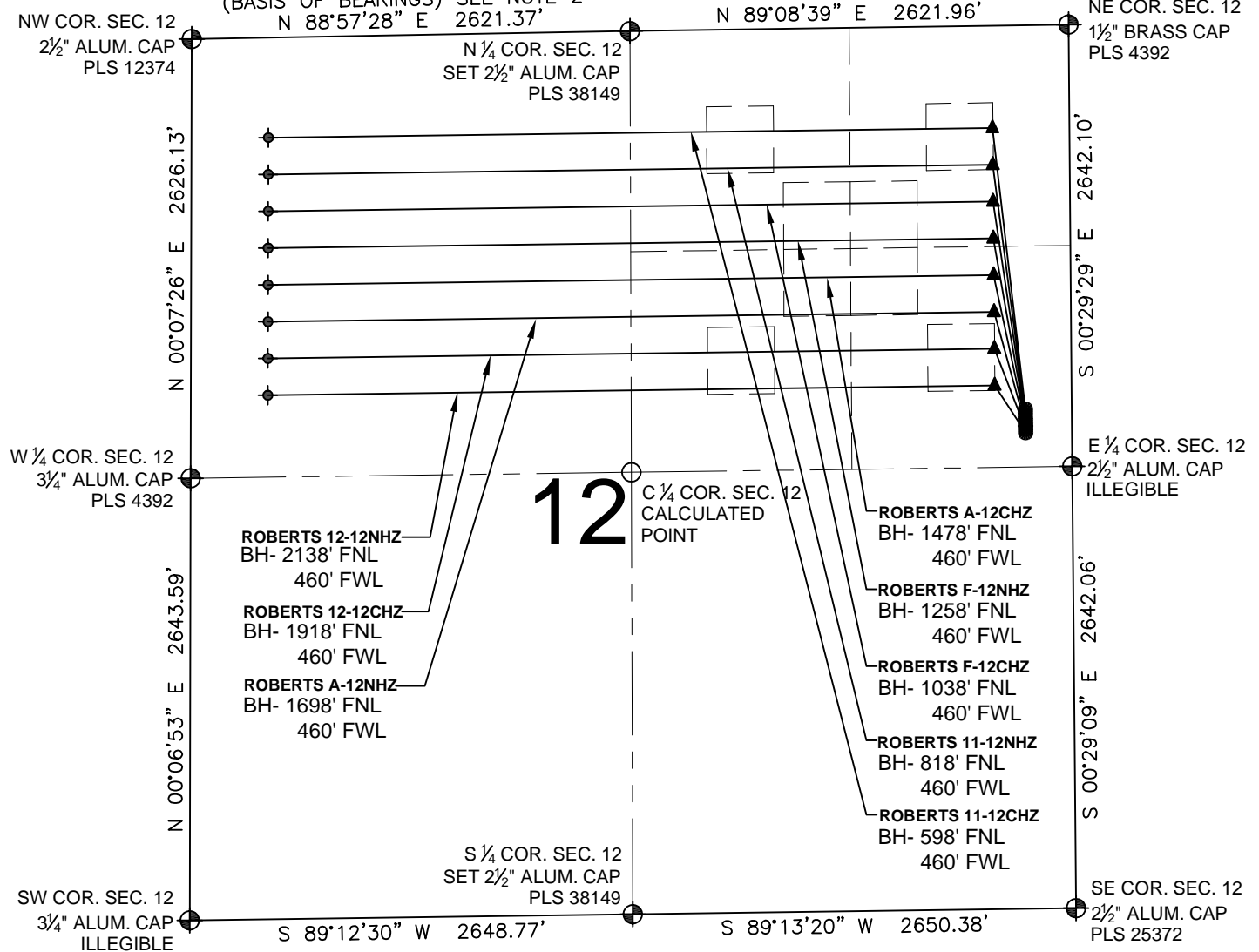


ROBERTS 12-E PAD MULTI-WELL PLAN

SECTION 12, TOWNSHIP 7 NORTH, RANGE 67 WEST, 6TH P.M.
(BASIS OF BEARINGS) SEE NOTE 2



LEGEND

- ⊕ = EXISTING MONUMENT ○ = CALCULATED POINT
- = PROPOSED WELL ▲ = LANDING POINT
- ◆ = EXISTING WELL LP = LANDING POINT
- ⬮ = BOTTOM HOLE BH = BOTTOM HOLE

NOTES:

- THIS FIELD SURVEY CONFORMS TO THE MINIMUM STANDARDS SET BY THE C.O.G.C.C., RULE NO. 215
- BEARINGS ARE BASED UPON THE NORTH LINE OF THE NORTHWEST QUARTER OF SECTION 12, TOWNSHIP 7 NORTH, RANGE 67 WEST OF THE 6TH P.M., COUNTY OF WELD, STATE OF COLORADO AS BEARING N88°57'28"E BETWEEN THE MONUMENTS SHOWN HEREON.
- GRID DISTANCES ARE SHOWN, AS GPS MEASURED IN THE FIELD, WITH TIES TO WELLS MEASURED PERPENDICULAR TO SECTION LINES. TO GET GROUND DISTANCES MULTIPLY THE SHOWN DISTANCE BY 1.000264178.

NOTES:

- ROBERTS 11-12CHZ TO BE AT 2297' FNL, 277' FEL. BOTTOM HOLE AT 598' FNL & 460' FWL
- ROBERTS 11-12NHZ TO BE AT 2317' FNL, 277' FEL. BOTTOM HOLE AT 818' FNL & 460' FWL
- ROBERTS F-12CHZ TO BE AT 2337' FNL, 277' FEL. BOTTOM HOLE AT 1038' FNL & 460' FWL
- ROBERTS F-12NHZ TO BE AT 2357' FNL, 277' FEL. BOTTOM HOLE AT 1258' FNL & 460' FWL
- ROBERTS A-12CHZ TO BE AT 2377' FNL, 277' FEL. BOTTOM HOLE AT 1478' FNL & 460' FWL
- ROBERTS A-12NHZ TO BE AT 2397' FNL, 277' FEL. BOTTOM HOLE AT 1698' FNL & 460' FWL
- ROBERTS 12-12CHZ TO BE AT 2417' FNL, 277' FEL. BOTTOM HOLE AT 1918' FNL & 460' FWL
- ROBERTS 12-12NHZ TO BE AT 2437' FNL, 277' FEL. BOTTOM HOLE AT 2138' FNL & 460' FWL

PREPARED BY:



SYNERGY RESOURCES

FIELD DATE: 07-29-14	PAD NAME: ROBERTS 12-E PAD
DRAWING DATE: 02-06-15	SURFACE LOCATION: SE 1/4 NE 1/4, SEC. 12, T7N, R67W, 6TH P.M.
BY: KAD	CHECKED: WDW
WELD COUNTY, COLORADO	

