



# Kerr-McGee Oil & Gas Onshore LP

A subsidiary of Anadarko Petroleum Corporation

1099 18<sup>th</sup> Street  
Denver, CO 80202  
720-929-6000

February 10, 2015

Matt Lepore  
Director, Colorado Oil and Gas Conservation Commission  
Department of Natural Resources  
The Chancery Building  
1120 Lincoln Street, Suite 801  
Denver, CO 80203

Re: **30 Day Certification Letter - 318A.e**  
MCKINSTRY 7N-21HZ (Doc #400789323)  
Township 3 North, Range 68 West  
Section 22: SE/4NE/4  
Unit Acreage: 280  
Unit Spacing: SEC. 23: SWNW; SEC.22: S2N2; SEC.21: S2NE  
Weld County, Colorado

Dear Director Lepore:

Kerr-McGee Oil and Gas Onshore LP (“KMG”) hereby certifies that a thirty (30) day notice has been given by certified mail to all mineral owners in the proposed wellbore spacing unit. We have not received any objections to such well location, proposed spacing unit, or additional producing formation. KMG hereby respectfully requests approval of this boundary well.

If you have any questions or issues regarding this permit, please contact Cheryl Light at (720) 929-6461.

Very truly yours,

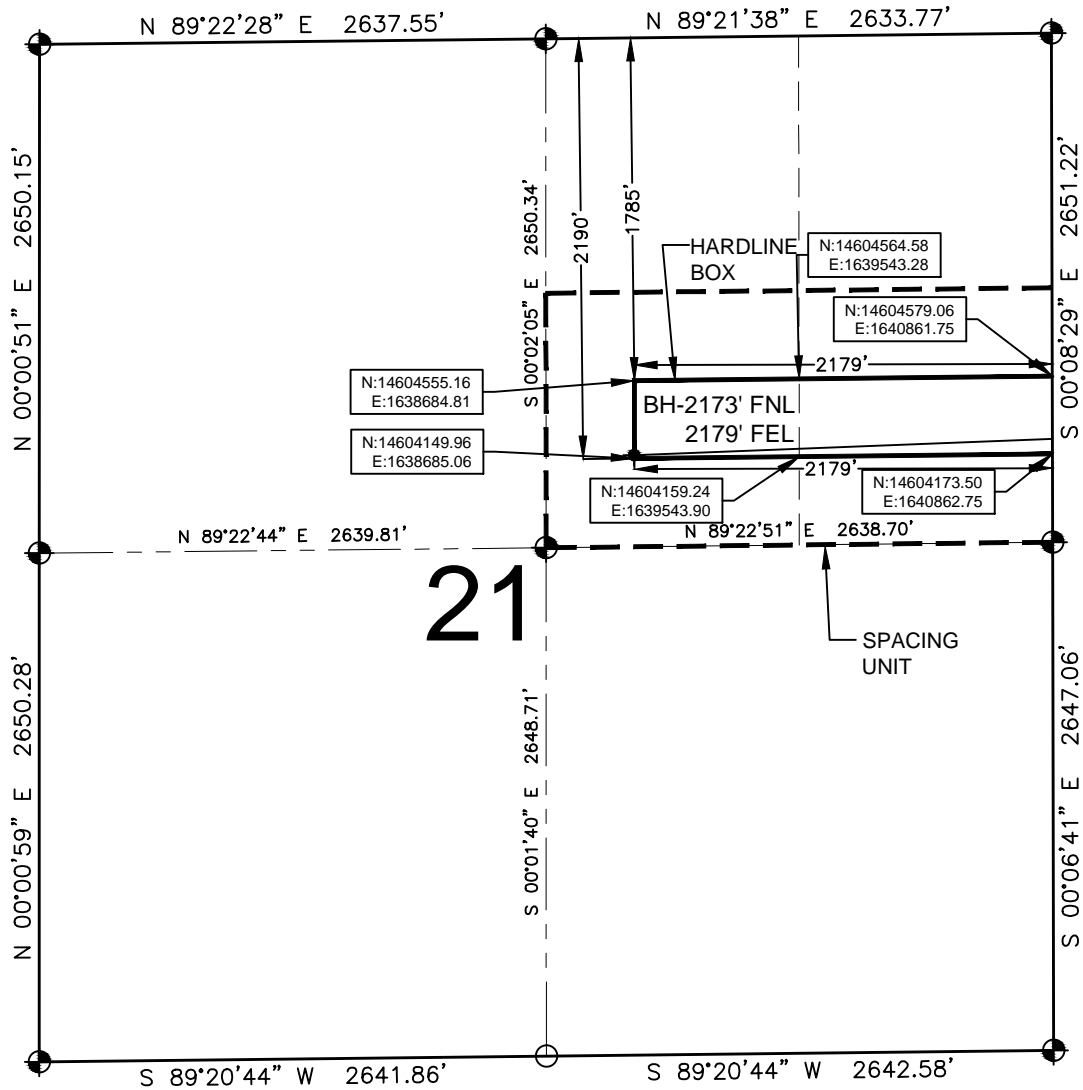
**KERR-McGEE OIL AND GAS ONSHORE LP**

A handwritten signature in blue ink that reads "Cheryl Light".

Cheryl Light  
Senior Regulatory Analyst

# HARDLINE EXHIBIT: MCKINSTRY 7N-21HZ

SECTION 21, TOWNSHIP 3 NORTH, RANGE 68 WEST, 6TH P.M.



### LEGEND

- = EXISTING MONUMENT
- = PROPOSED HEEL
- = CALCULATED POSITION
- ◆ = BOTTOM HOLE
- BH = BOTTOM HOLE

### HEEL LOCATION

NAD83  
 LATITUDE= 40.213412°  
 LONGITUDE= 104.980288°  
  
 LATITUDE= 40°12'48.284"  
 LONGITUDE= 104°58'49.038"

### QRT/QRT SECTIONS WITHIN PATH OF THE HARDLINE

SWNE, SEC. 21  
 SENE, SEC. 21

### BOTTOM HOLE LOCATION

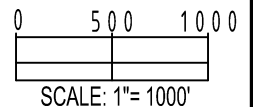
NAD83  
 LATITUDE= 40.212646°  
 LONGITUDE= 105.006205°  
  
 LATITUDE= 40°12'45.526"  
 LONGITUDE= 105°00'22.338"

### AVAILABLE FOOTAGE

8277'

### NOTES:

- THIS DOCUMENT IS NOT A LAND SURVEY PLAT OR IMPROVEMENT SURVEY PLAT. THIS DOCUMENT DOES NOT REFLECT A FIELD SURVEY. SECTION BREAKDOWN, MONUMENTATION AND HORIZONTAL POSITIONS SHOWN ARE BASED ON THE HEEL AND BOTTOM HOLE LOCATION PROVIDED BY ANADARKO PETROLEUM CORPORATION



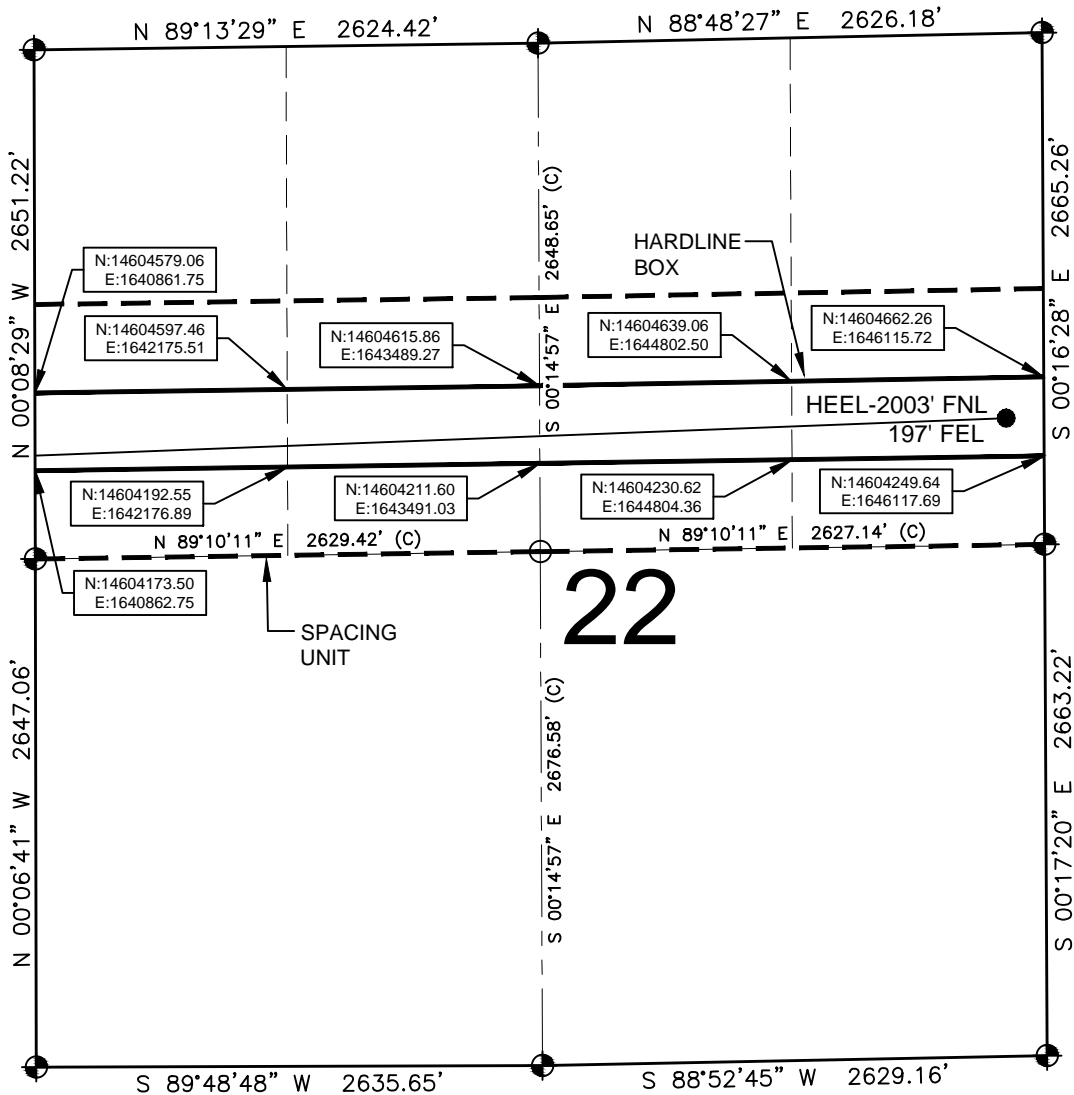
PREPARED BY:

SHEET 1 OF 3

DRAWING DATE: 12-19-14		HEEL LOCATION: SE 1/4 NE 1/4, SEC. 22, T3N, R68W, 6TH P.M.	
BY: SMF	CHECKED MDCA	WELD COUNTY, COLORADO	

# HARDLINE EXHIBIT: MCKINSTRY 7N-21HZ

SECTION 22, TOWNSHIP 3 NORTH, RANGE 68 WEST, 6TH P.M.



## LEGEND

- ⊙ = EXISTING MONUMENT
- = PROPOSED HEEL
- = CALCULATED POSITION
- ⊕ = BOTTOM HOLE
- BH = BOTTOM HOLE

## QRT/QRT SECTIONS WITHIN PATH OF THE HARDLINE

- SWNW, SEC. 22
- SENW, SEC. 22
- SWNE, SEC. 22
- SENE, SEC. 22

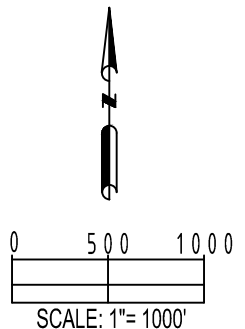
## NOTES:

- THIS DOCUMENT IS NOT A LAND SURVEY PLAT OR IMPROVEMENT SURVEY PLAT. THIS DOCUMENT DOES NOT REFLECT A FIELD SURVEY. SECTION BREAKDOWN, MONUMENTATION AND HORIZONTAL POSITIONS SHOWN ARE BASED ON THE HEEL AND BOTTOM HOLE LOCATION PROVIDED BY ANADARKO PETROLEUM CORPORATION



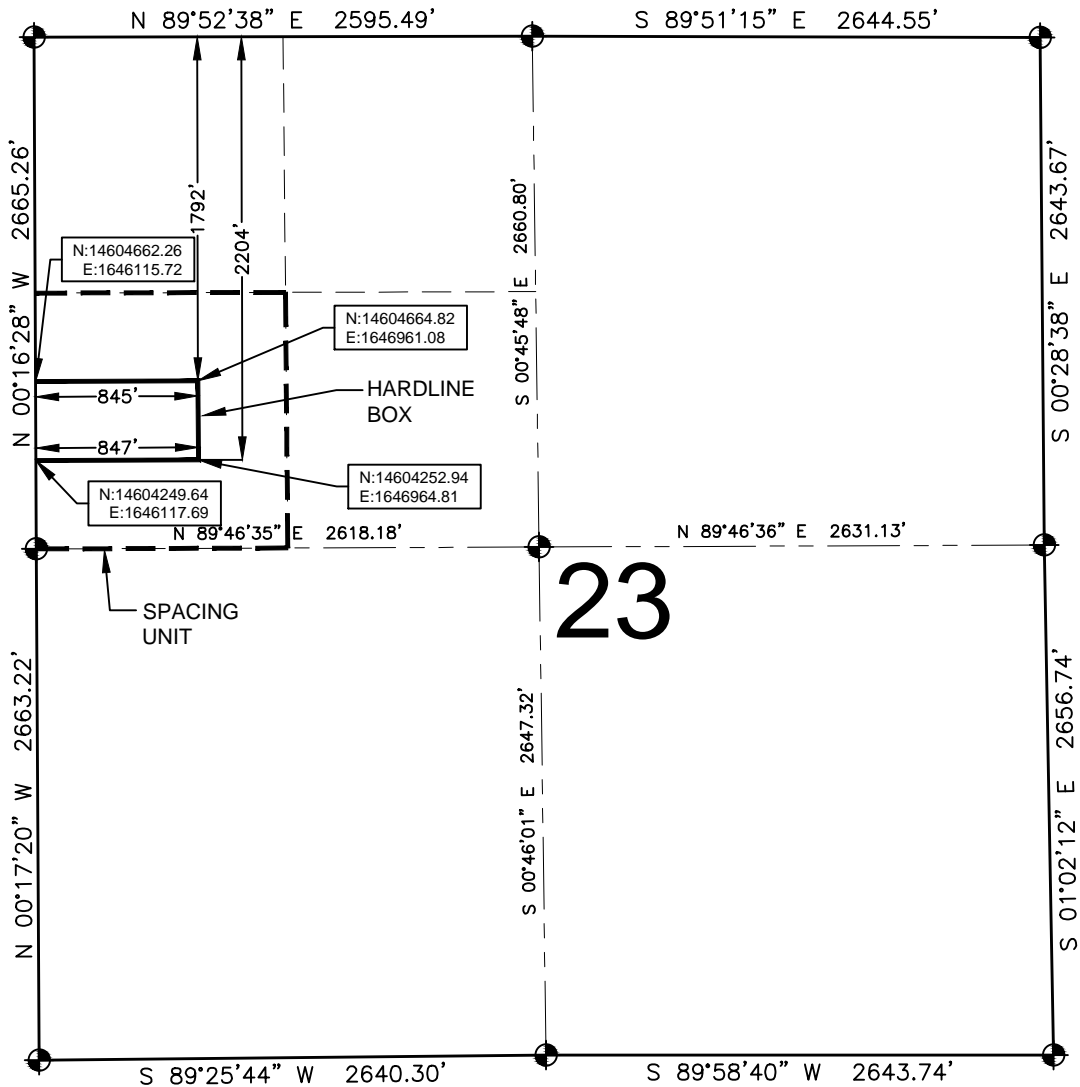
SHEET 2 OF 3

DRAWING DATE: 12-19-14		HEEL LOCATION: SE 1/4 NE 1/4, SEC. 22, T3N, R68W, 6TH P.M. WELD COUNTY, COLORADO	
BY: SMF	CHECKED: MDCA		



# HARDLINE EXHIBIT: MCKINSTRY 7N-21HZ

SECTION 23, TOWNSHIP 3 NORTH, RANGE 68 WEST, 6TH P.M.



### LEGEND

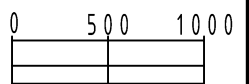
- ⊙ = EXISTING MONUMENT
- = PROPOSED HEEL
- = CALCULATED POSITION
- ⊕ = BOTTOM HOLE
- BH = BOTTOM HOLE

### QRT/QRT SECTIONS WITHIN PATH OF THE HARDLINE

SWNW, SEC. 23

### NOTES:

- THIS DOCUMENT IS NOT A LAND SURVEY PLAT OR IMPROVEMENT SURVEY PLAT. THIS DOCUMENT DOES NOT REFLECT A FIELD SURVEY. SECTION BREAKDOWN, MONUMENTATION AND HORIZONTAL POSITIONS SHOWN ARE BASED ON THE HEEL AND BOTTOM HOLE LOCATION PROVIDED BY ANADARKO PETROLEUM CORPORATION



SCALE: 1" = 1000'

PREPARED BY:



Petroleum Field Services, LLC  
7535 Hilltop Circle  
Denver, CO 80221

SHEET 3 OF 3

DRAWING DATE: 12-19-14		HEEL LOCATION: SE 1/4 NE 1/4, SEC. 22, T3N, R68W, 6TH P.M. WELD COUNTY, COLORADO	
BY: SMF	CHECKED MDCA		