

US ROCKIES WATTENBERG PLANNING

WELD-NAD83-UTMFT13N
MCKINSTRY 1-22HZ PAD
MCKINSTRY 2C-21HZ

Plan A

Plan: PERMIT REV-1

Sperry Drilling Services Proposal Report

15 December, 2014

Well Coordinates: 14,605,645.82 N, 1,645,611.06 E (40° 13' 00.13" N, 104° 58' 53.01" W)

Ground Level: 4,971.00 usft

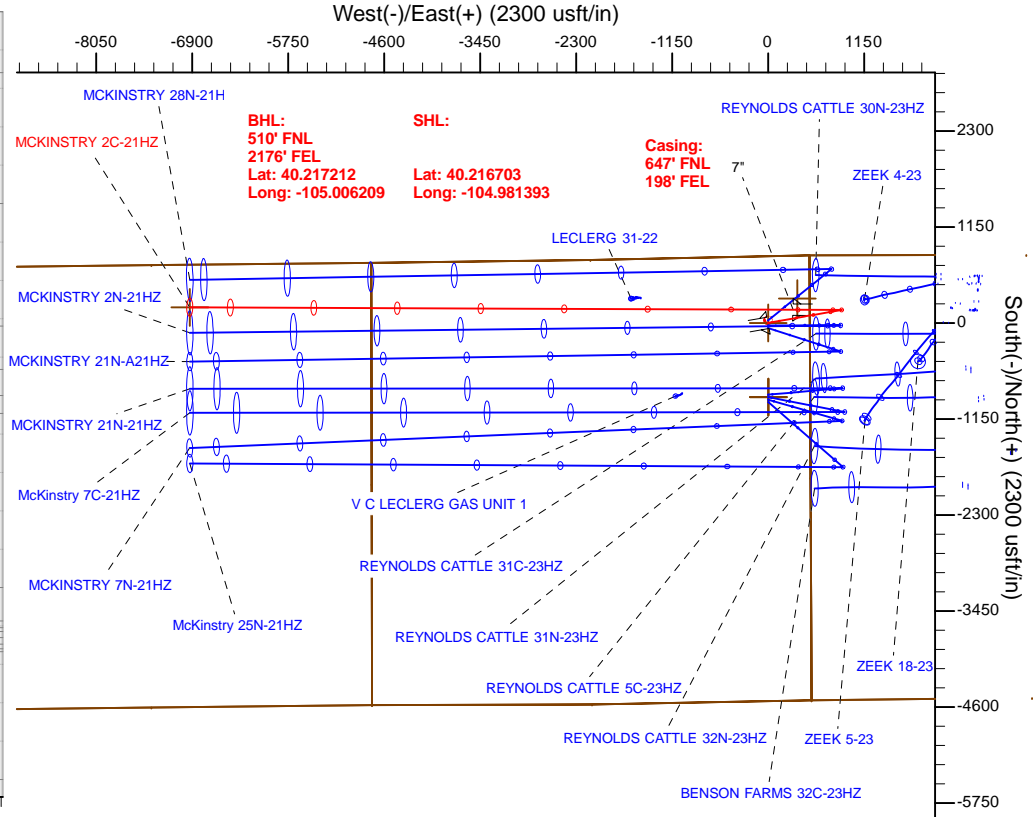
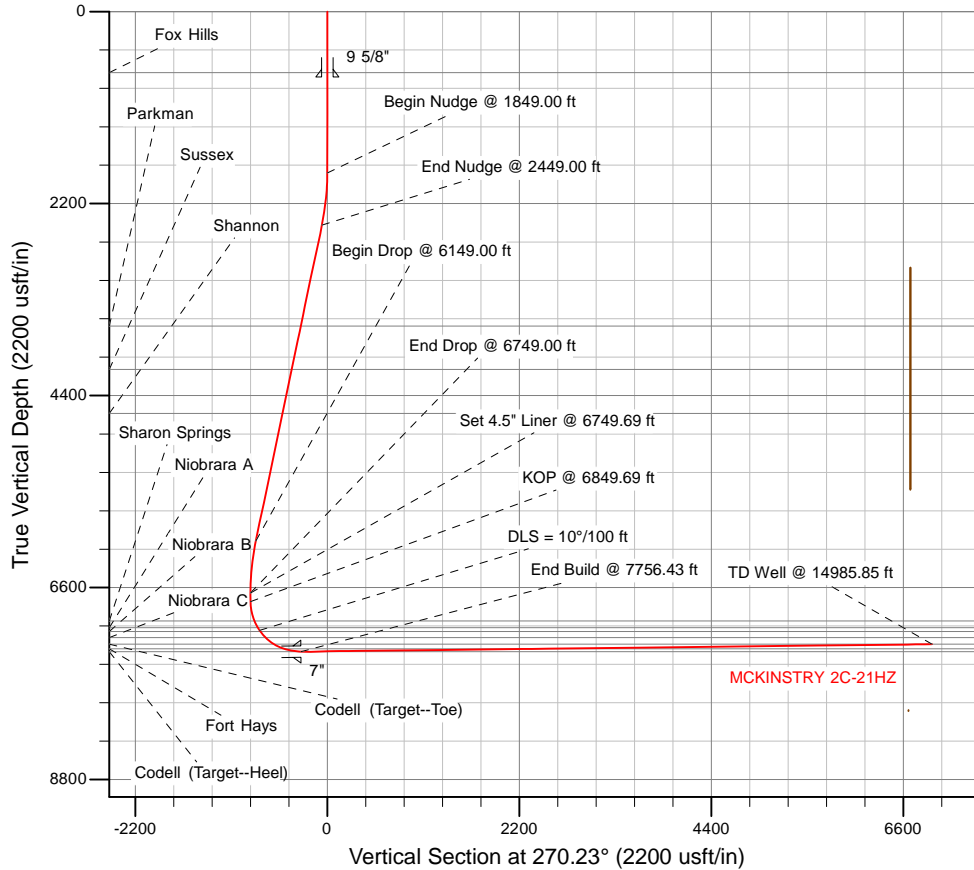
Local Coordinate Origin:	Centered on Well MCKINSTRY 2C-21HZ
Viewing Datum:	RKB = 17' @ 4988.00usft (Drilling Rig)
TVDs to System:	N
North Reference:	True
Unit System:	Dec-Deg - API - US Survey Feet - Custom

Version: 5000.1 Build: 70

HALLIBURTON

Project: WELD-NAD83-UTMFT13N
 Site: MCKINSTRY 1-22HZ PAD
 Well: MCKINSTRY 2C-21HZ
 Wellbore: Plan A
 Design: PERMIT REV-1

US ROCKIES WATTENBERG PLANNING



SECTION DETAILS

Sec	MD	Inc	Azi	TVD	+N/-S	+E/-W	Dleg	TFace	VSec	Target
1	0.00	0.00	0.00	0.00	0.00	0.00	0.00	0.00	0.00	
2	1849.00	0.00	0.00	1849.00	0.00	0.00	0.00	0.00	0.00	
3	2449.00	12.00	80.00	2444.62	10.87	61.65	2.00	80.00	-61.61	
4	6149.00	12.00	80.00	6063.77	144.45	819.24	0.00	0.00	-818.65	
5	6749.00	0.00	0.00	6659.39	155.32	880.89	2.00	180.00	-880.26	
6	6849.69	0.00	0.00	6760.08	155.32	880.89	0.00	0.00	-880.26	
7	7756.43	90.67	270.23	7333.00	157.63	301.20	10.00	270.23	-300.56	
8	14985.86	90.67	270.23	7248.00	186.32	-6927.67	0.00	0.00	6928.37	MCKINSTRY 2C-21HZ_BHL

WELLBORE TARGET DETAILS (LAT/LONG)

Name	TVD	+N/-S	+E/-W	Latitude	Longitude	Shape
3N-R68W-Sec. 21_Section Lines	-13.00	-889.26	3.07	40.214261	-104.981382	Polygon
3N-R68W-Sec. 22_Section Lines	-13.00	-889.26	3.07	40.214261	-104.981382	Polygon
3N-R68W-Sec. 23_Section Lines	-13.00	-889.26	3.07	40.214261	-104.981382	Polygon
MCKINSTRY 2C-21HZ_SHL	0.00	0.00	0.00	40.216703	-104.981393	Point
MCKINSTRY 2C-21HZ_BHL	7248.00	186.32	-6927.67	40.217212	-105.006209	Point
MCKINSTRY 2C-21HZ_HEEL	7333.00	291.00	350.00	40.217502	-104.980139	Point

WELL DETAILS: MCKINSTRY 2C-21HZ

Ground Level: 4971.00

RKB = 17' @ 4988.00usft (Drilling Rig)

TVD	MD	Annotation
6660.08	6749.69	Set 4.5" Liner @ 6749.69 ft
6760.08	6849.69	KOP @ 6849.69 ft
7333.00	7756.43	End Build @ 7756.43 ft

Plan: PERMIT REV-1 (MCKINSTRY 2C-21HZ/Plan A)

Created By: Katie Benner Date: 12/15/2014
 Reviewed: _____ Date: _____



Plan Report for MCKINSTRY 2C-21HZ - PERMIT REV-1

Measured Depth (usft)	Inclination (°)	Azimuth (°)	Vertical Depth (usft)	+N/-S (usft)	+E/-W (usft)	Vertical Section (usft)	Dogleg Rate (°/100usft)	Build Rate (°/100usft)	Turn Rate (°/100usft)	Toolface Azimuth (°)
0.00	0.00	0.00	0.00	0.00	0.00	0.00	0.00	0.00	0.00	0.00
Tie-On to Surface @ 0.00 ft - 3N-R68W-Sec. 22_Section Lines - 3N-R68W-Sec. 23_Section Lines - 3N-R68W-Sec. 21_Section Lines - MCKINSTRY 2C										
100.00	0.00	0.00	100.00	0.00	0.00	0.00	0.00	0.00	0.00	0.00
200.00	0.00	0.00	200.00	0.00	0.00	0.00	0.00	0.00	0.00	0.00
300.00	0.00	0.00	300.00	0.00	0.00	0.00	0.00	0.00	0.00	0.00
400.00	0.00	0.00	400.00	0.00	0.00	0.00	0.00	0.00	0.00	0.00
500.00	0.00	0.00	500.00	0.00	0.00	0.00	0.00	0.00	0.00	0.00
600.00	0.00	0.00	600.00	0.00	0.00	0.00	0.00	0.00	0.00	0.00
699.00	0.00	0.00	699.00	0.00	0.00	0.00	0.00	0.00	0.00	0.00
Fox Hills										
700.00	0.00	0.00	700.00	0.00	0.00	0.00	0.00	0.00	0.00	0.00
749.00	0.00	0.00	749.00	0.00	0.00	0.00	0.00	0.00	0.00	0.00
9 5/8"										
800.00	0.00	0.00	800.00	0.00	0.00	0.00	0.00	0.00	0.00	0.00
900.00	0.00	0.00	900.00	0.00	0.00	0.00	0.00	0.00	0.00	0.00
1,000.00	0.00	0.00	1,000.00	0.00	0.00	0.00	0.00	0.00	0.00	0.00
1,100.00	0.00	0.00	1,100.00	0.00	0.00	0.00	0.00	0.00	0.00	0.00
1,200.00	0.00	0.00	1,200.00	0.00	0.00	0.00	0.00	0.00	0.00	0.00
1,300.00	0.00	0.00	1,300.00	0.00	0.00	0.00	0.00	0.00	0.00	0.00
1,400.00	0.00	0.00	1,400.00	0.00	0.00	0.00	0.00	0.00	0.00	0.00
1,500.00	0.00	0.00	1,500.00	0.00	0.00	0.00	0.00	0.00	0.00	0.00
1,600.00	0.00	0.00	1,600.00	0.00	0.00	0.00	0.00	0.00	0.00	0.00
1,700.00	0.00	0.00	1,700.00	0.00	0.00	0.00	0.00	0.00	0.00	0.00
1,800.00	0.00	0.00	1,800.00	0.00	0.00	0.00	0.00	0.00	0.00	0.00
1,849.00	0.00	0.00	1,849.00	0.00	0.00	0.00	0.00	0.00	0.00	0.00
Begin Nudge @ 1849.00 ft										
1,900.00	1.02	80.00	1,900.00	0.08	0.45	-0.45	2.00	2.00	0.00	80.00
2,000.00	3.02	80.00	1,999.93	0.69	3.92	-3.92	2.00	2.00	0.00	0.00
2,100.00	5.02	80.00	2,099.68	1.91	10.82	-10.81	2.00	2.00	0.00	0.00
2,200.00	7.02	80.00	2,199.12	3.73	21.15	-21.13	2.00	2.00	0.00	0.00
2,300.00	9.02	80.00	2,298.14	6.15	34.89	-34.86	2.00	2.00	0.00	0.00
2,400.00	11.02	80.00	2,396.61	9.17	52.02	-51.99	2.00	2.00	0.00	0.00
2,449.00	12.00	80.00	2,444.62	10.87	61.65	-61.61	2.00	2.00	0.00	0.00
End Nudge @ 2449.00 ft										
2,500.00	12.00	80.00	2,494.51	12.71	72.09	-72.04	0.00	0.00	0.00	0.00
2,600.00	12.00	80.00	2,592.32	16.32	92.57	-92.50	0.00	0.00	0.00	0.00
2,700.00	12.00	80.00	2,690.14	19.93	113.04	-112.96	0.00	0.00	0.00	0.00
2,800.00	12.00	80.00	2,787.95	23.54	133.52	-133.42	0.00	0.00	0.00	0.00
2,900.00	12.00	80.00	2,885.77	27.15	154.00	-153.88	0.00	0.00	0.00	0.00
3,000.00	12.00	80.00	2,983.58	30.76	174.47	-174.35	0.00	0.00	0.00	0.00
3,100.00	12.00	80.00	3,081.40	34.37	194.95	-194.81	0.00	0.00	0.00	0.00
3,200.00	12.00	80.00	3,179.21	37.98	215.42	-215.27	0.00	0.00	0.00	0.00
3,300.00	12.00	80.00	3,277.03	41.59	235.90	-235.73	0.00	0.00	0.00	0.00
3,400.00	12.00	80.00	3,374.84	45.21	256.37	-256.19	0.00	0.00	0.00	0.00
3,500.00	12.00	80.00	3,472.66	48.82	276.85	-276.65	0.00	0.00	0.00	0.00
3,600.00	12.00	80.00	3,570.47	52.43	297.32	-297.11	0.00	0.00	0.00	0.00
3,633.26	12.00	80.00	3,603.00	53.63	304.13	-303.91	0.00	0.00	0.00	0.00
Parkman										
3,700.00	12.00	80.00	3,668.29	56.04	317.80	-317.57	0.00	0.00	0.00	0.00
3,800.00	12.00	80.00	3,766.10	59.65	338.27	-338.03	0.00	0.00	0.00	0.00
3,900.00	12.00	80.00	3,863.92	63.26	358.75	-358.49	0.00	0.00	0.00	0.00
4,000.00	12.00	80.00	3,961.73	66.87	379.22	-378.95	0.00	0.00	0.00	0.00
4,100.00	12.00	80.00	4,059.54	70.48	399.70	-399.41	0.00	0.00	0.00	0.00
4,141.36	12.00	80.00	4,100.00	71.97	408.17	-407.87	0.00	0.00	0.00	0.00
Sussex										
4,200.00	12.00	80.00	4,157.36	74.09	420.17	-419.87	0.00	0.00	0.00	0.00
4,300.00	12.00	80.00	4,255.17	77.70	440.65	-440.33	0.00	0.00	0.00	0.00



Plan Report for MCKINSTRY 2C-21HZ - PERMIT REV-1

Measured Depth (usft)	Inclination (°)	Azimuth (°)	Vertical Depth (usft)	+N/-S (usft)	+E/-W (usft)	Vertical Section (usft)	Dogleg Rate (°/100usft)	Build Rate (°/100usft)	Turn Rate (°/100usft)	Toolface Azimuth (°)
4,400.00	12.00	80.00	4,352.99	81.31	461.12	-460.79	0.00	0.00	0.00	0.00
4,500.00	12.00	80.00	4,450.80	84.92	481.60	-481.26	0.00	0.00	0.00	0.00
4,600.00	12.00	80.00	4,548.62	88.53	502.08	-501.72	0.00	0.00	0.00	0.00
4,655.60	12.00	80.00	4,603.00	90.54	513.46	-513.09	0.00	0.00	0.00	0.00
Shannon										
4,700.00	12.00	80.00	4,646.43	92.14	522.55	-522.18	0.00	0.00	0.00	0.00
4,800.00	12.00	80.00	4,744.25	95.75	543.03	-542.64	0.00	0.00	0.00	0.00
4,900.00	12.00	80.00	4,842.06	99.36	563.50	-563.10	0.00	0.00	0.00	0.00
5,000.00	12.00	80.00	4,939.88	102.97	583.98	-583.56	0.00	0.00	0.00	0.00
5,100.00	12.00	80.00	5,037.69	106.58	604.45	-604.02	0.00	0.00	0.00	0.00
5,200.00	12.00	80.00	5,135.51	110.19	624.93	-624.48	0.00	0.00	0.00	0.00
5,300.00	12.00	80.00	5,233.32	113.80	645.40	-644.94	0.00	0.00	0.00	0.00
5,400.00	12.00	80.00	5,331.14	117.41	665.88	-665.40	0.00	0.00	0.00	0.00
5,500.00	12.00	80.00	5,428.95	121.02	686.35	-685.86	0.00	0.00	0.00	0.00
5,600.00	12.00	80.00	5,526.77	124.63	706.83	-706.32	0.00	0.00	0.00	0.00
5,700.00	12.00	80.00	5,624.58	128.24	727.30	-726.78	0.00	0.00	0.00	0.00
5,800.00	12.00	80.00	5,722.40	131.85	747.78	-747.24	0.00	0.00	0.00	0.00
5,900.00	12.00	80.00	5,820.21	135.46	768.25	-767.70	0.00	0.00	0.00	0.00
6,000.00	12.00	80.00	5,918.03	139.07	788.73	-788.16	0.00	0.00	0.00	0.00
6,100.00	12.00	80.00	6,015.84	142.68	809.20	-808.63	0.00	0.00	0.00	0.00
6,149.00	12.00	80.00	6,063.77	144.45	819.24	-818.65	0.00	0.00	0.00	0.00
Begin Drop @ 6149.00 ft										
6,200.00	10.98	80.00	6,113.75	146.22	829.24	-828.65	2.00	-2.00	0.00	180.00
6,300.00	8.98	80.00	6,212.23	149.23	846.31	-845.70	2.00	-2.00	0.00	180.00
6,400.00	6.98	80.00	6,311.25	151.64	859.98	-859.36	2.00	-2.00	0.00	180.00
6,500.00	4.98	80.00	6,410.71	153.45	870.24	-869.62	2.00	-2.00	0.00	180.00
6,600.00	2.98	80.00	6,510.46	154.65	877.07	-876.45	2.00	-2.00	0.00	180.00
6,700.00	0.98	80.00	6,610.39	155.25	880.48	-879.85	2.00	-2.00	0.00	180.00
6,749.00	0.00	0.00	6,659.39	155.32	880.89	-880.26	2.00	-2.00	-163.27	-180.00
End Drop @ 6749.00 ft										
6,749.69	0.00	0.00	6,660.08	155.32	880.89	-880.26	0.00	0.00	0.00	180.00
Set 4.5" Liner @ 6749.69 ft										
6,800.00	0.00	0.00	6,710.39	155.32	880.89	-880.26	0.00	0.00	0.00	0.00
6,849.69	0.00	0.00	6,760.08	155.32	880.89	-880.26	0.00	0.00	0.00	0.00
KOP @ 6849.69 ft										
6,900.00	5.03	270.23	6,810.33	155.33	878.68	-878.05	10.00	10.00	0.00	270.23
7,000.00	15.03	270.23	6,908.67	155.40	861.29	-860.66	10.00	10.00	0.00	0.00
7,077.57	22.79	270.23	6,982.00	155.50	836.17	-835.54	10.00	10.00	0.00	0.00
Sharon Springs										
7,100.00	25.03	270.23	7,002.51	155.54	827.08	-826.45	10.00	10.00	0.00	0.00
7,164.16	31.45	270.23	7,059.00	155.66	796.74	-796.10	10.00	10.00	0.00	0.00
Niobrara A										
7,200.00	35.03	270.23	7,088.97	155.74	777.09	-776.46	10.00	10.00	0.00	0.00
DLS = 10°/100 ft										
7,216.07	36.64	270.23	7,102.00	155.77	767.69	-767.05	10.00	10.00	0.00	0.00
Niobrara B										
7,300.00	45.03	270.23	7,165.44	155.99	712.86	-712.22	10.00	10.00	0.00	0.00
7,310.79	46.11	270.23	7,173.00	156.02	705.15	-704.52	10.00	10.00	0.00	0.00
Niobrara C										
7,400.00	55.03	270.23	7,229.60	156.30	636.31	-635.68	10.00	10.00	0.00	0.00
7,500.00	65.03	270.23	7,279.49	156.64	549.80	-549.16	10.00	10.00	0.00	0.00
7,557.17	70.75	270.23	7,301.00	156.85	496.85	-496.22	10.00	10.00	0.00	0.00
Fort Hays										
7,600.00	75.03	270.23	7,313.60	157.01	455.93	-455.29	10.00	10.00	0.00	0.00
7,700.00	85.03	270.23	7,330.89	157.40	357.56	-356.93	10.00	10.00	0.00	0.00
7,708.17	85.85	270.23	7,331.54	157.43	349.42	-348.78	10.00	10.00	0.00	0.00
MCKINSTRY 2C-21HZ_HEEL										
7,756.43	90.67	270.23	7,333.00	157.63	301.20	-300.56	10.00	10.00	0.00	0.00



Plan Report for MCKINSTRY 2C-21HZ - PERMIT REV-1

Measured Depth (usft)	Inclination (°)	Azimuth (°)	Vertical Depth (usft)	+N/-S (usft)	+E/-W (usft)	Vertical Section (usft)	Dogleg Rate (°/100usft)	Build Rate (°/100usft)	Turn Rate (°/100usft)	Toolface Azimuth (°)
End Build @ 7756.43 ft - Codell (Target--Heel) - 7"										
7,800.00	90.67	270.23	7,332.49	157.80	257.63	-256.99	0.00	0.00	0.00	0.00
7,900.00	90.67	270.23	7,331.31	158.20	157.64	-157.00	0.00	0.00	0.00	0.00
8,000.00	90.67	270.23	7,330.14	158.59	57.64	-57.01	0.00	0.00	0.00	0.00
8,100.00	90.67	270.23	7,328.96	158.99	-42.35	42.99	0.00	0.00	0.00	0.00
8,200.00	90.67	270.23	7,327.79	159.39	-142.34	142.98	0.00	0.00	0.00	0.00
8,300.00	90.67	270.23	7,326.61	159.78	-242.33	242.97	0.00	0.00	0.00	0.00
8,400.00	90.67	270.23	7,325.43	160.18	-342.32	342.96	0.00	0.00	0.00	0.00
8,500.00	90.67	270.23	7,324.26	160.58	-442.32	442.96	0.00	0.00	0.00	0.00
8,600.00	90.67	270.23	7,323.08	160.97	-542.31	542.95	0.00	0.00	0.00	0.00
8,700.00	90.67	270.23	7,321.91	161.37	-642.30	642.94	0.00	0.00	0.00	0.00
8,800.00	90.67	270.23	7,320.73	161.77	-742.29	742.94	0.00	0.00	0.00	0.00
8,900.00	90.67	270.23	7,319.55	162.17	-842.29	842.93	0.00	0.00	0.00	0.00
9,000.00	90.67	270.23	7,318.38	162.56	-942.28	942.92	0.00	0.00	0.00	0.00
9,100.00	90.67	270.23	7,317.20	162.96	-1,042.27	1,042.92	0.00	0.00	0.00	0.00
9,200.00	90.67	270.23	7,316.03	163.36	-1,142.26	1,142.91	0.00	0.00	0.00	0.00
9,300.00	90.67	270.23	7,314.85	163.75	-1,242.26	1,242.90	0.00	0.00	0.00	0.00
9,400.00	90.67	270.23	7,313.68	164.15	-1,342.25	1,342.90	0.00	0.00	0.00	0.00
9,500.00	90.67	270.23	7,312.50	164.55	-1,442.24	1,442.89	0.00	0.00	0.00	0.00
9,600.00	90.67	270.23	7,311.32	164.94	-1,542.23	1,542.88	0.00	0.00	0.00	0.00
9,700.00	90.67	270.23	7,310.15	165.34	-1,642.22	1,642.87	0.00	0.00	0.00	0.00
9,800.00	90.67	270.23	7,308.97	165.74	-1,742.22	1,742.87	0.00	0.00	0.00	0.00
9,900.00	90.67	270.23	7,307.80	166.13	-1,842.21	1,842.86	0.00	0.00	0.00	0.00
10,000.00	90.67	270.23	7,306.62	166.53	-1,942.20	1,942.85	0.00	0.00	0.00	0.00
10,100.00	90.67	270.23	7,305.45	166.93	-2,042.19	2,042.85	0.00	0.00	0.00	0.00
10,200.00	90.67	270.23	7,304.27	167.33	-2,142.19	2,142.84	0.00	0.00	0.00	0.00
10,300.00	90.67	270.23	7,303.09	167.72	-2,242.18	2,242.83	0.00	0.00	0.00	0.00
10,400.00	90.67	270.23	7,301.92	168.12	-2,342.17	2,342.83	0.00	0.00	0.00	0.00
10,500.00	90.67	270.23	7,300.74	168.52	-2,442.16	2,442.82	0.00	0.00	0.00	0.00
10,600.00	90.67	270.23	7,299.57	168.91	-2,542.15	2,542.81	0.00	0.00	0.00	0.00
10,700.00	90.67	270.23	7,298.39	169.31	-2,642.15	2,642.81	0.00	0.00	0.00	0.00
10,800.00	90.67	270.23	7,297.22	169.71	-2,742.14	2,742.80	0.00	0.00	0.00	0.00
10,900.00	90.67	270.23	7,296.04	170.10	-2,842.13	2,842.79	0.00	0.00	0.00	0.00
11,000.00	90.67	270.23	7,294.86	170.50	-2,942.12	2,942.78	0.00	0.00	0.00	0.00
11,100.00	90.67	270.23	7,293.69	170.90	-3,042.12	3,042.78	0.00	0.00	0.00	0.00
11,200.00	90.67	270.23	7,292.51	171.30	-3,142.11	3,142.77	0.00	0.00	0.00	0.00
11,300.00	90.67	270.23	7,291.34	171.69	-3,242.10	3,242.76	0.00	0.00	0.00	0.00
11,400.00	90.67	270.23	7,290.16	172.09	-3,342.09	3,342.76	0.00	0.00	0.00	0.00
11,500.00	90.67	270.23	7,288.99	172.49	-3,442.09	3,442.75	0.00	0.00	0.00	0.00
11,600.00	90.67	270.23	7,287.81	172.88	-3,542.08	3,542.74	0.00	0.00	0.00	0.00
11,700.00	90.67	270.23	7,286.63	173.28	-3,642.07	3,642.74	0.00	0.00	0.00	0.00
11,800.00	90.67	270.23	7,285.46	173.68	-3,742.06	3,742.73	0.00	0.00	0.00	0.00
11,900.00	90.67	270.23	7,284.28	174.07	-3,842.05	3,842.72	0.00	0.00	0.00	0.00
12,000.00	90.67	270.23	7,283.11	174.47	-3,942.05	3,942.72	0.00	0.00	0.00	0.00
12,100.00	90.67	270.23	7,281.93	174.87	-4,042.04	4,042.71	0.00	0.00	0.00	0.00
12,200.00	90.67	270.23	7,280.75	175.26	-4,142.03	4,142.70	0.00	0.00	0.00	0.00
12,300.00	90.67	270.23	7,279.58	175.66	-4,242.02	4,242.69	0.00	0.00	0.00	0.00
12,400.00	90.67	270.23	7,278.40	176.06	-4,342.02	4,342.69	0.00	0.00	0.00	0.00
12,500.00	90.67	270.23	7,277.23	176.46	-4,442.01	4,442.68	0.00	0.00	0.00	0.00
12,600.00	90.67	270.23	7,276.05	176.85	-4,542.00	4,542.67	0.00	0.00	0.00	0.00
12,700.00	90.67	270.23	7,274.88	177.25	-4,641.99	4,642.67	0.00	0.00	0.00	0.00
12,800.00	90.67	270.23	7,273.70	177.65	-4,741.99	4,742.66	0.00	0.00	0.00	0.00
12,900.00	90.67	270.23	7,272.52	178.04	-4,841.98	4,842.65	0.00	0.00	0.00	0.00
13,000.00	90.67	270.23	7,271.35	178.44	-4,941.97	4,942.65	0.00	0.00	0.00	0.00
13,100.00	90.67	270.23	7,270.17	178.84	-5,041.96	5,042.64	0.00	0.00	0.00	0.00
13,200.00	90.67	270.23	7,269.00	179.23	-5,141.95	5,142.63	0.00	0.00	0.00	0.00
13,300.00	90.67	270.23	7,267.82	179.63	-5,241.95	5,242.63	0.00	0.00	0.00	0.00
13,400.00	90.67	270.23	7,266.65	180.03	-5,341.94	5,342.62	0.00	0.00	0.00	0.00
13,500.00	90.67	270.23	7,265.47	180.43	-5,441.93	5,442.61	0.00	0.00	0.00	0.00
13,600.00	90.67	270.23	7,264.29	180.82	-5,541.92	5,542.61	0.00	0.00	0.00	0.00



Plan Report for MCKINSTRY 2C-21HZ - PERMIT REV-1

Measured Depth (usft)	Inclination (°)	Azimuth (°)	Vertical Depth (usft)	+N/-S (usft)	+E/-W (usft)	Vertical Section (usft)	Dogleg Rate (°/100usft)	Build Rate (°/100usft)	Turn Rate (°/100usft)	Toolface Azimuth (°)
13,700.00	90.67	270.23	7,263.12	181.22	-5,641.92	5,642.60	0.00	0.00	0.00	0.00
13,800.00	90.67	270.23	7,261.94	181.62	-5,741.91	5,742.59	0.00	0.00	0.00	0.00
13,900.00	90.67	270.23	7,260.77	182.01	-5,841.90	5,842.58	0.00	0.00	0.00	0.00
14,000.00	90.67	270.23	7,259.59	182.41	-5,941.89	5,942.58	0.00	0.00	0.00	0.00
14,100.00	90.67	270.23	7,258.42	182.81	-6,041.89	6,042.57	0.00	0.00	0.00	0.00
14,200.00	90.67	270.23	7,257.24	183.20	-6,141.88	6,142.56	0.00	0.00	0.00	0.00
14,300.00	90.67	270.23	7,256.06	183.60	-6,241.87	6,242.56	0.00	0.00	0.00	0.00
14,400.00	90.67	270.23	7,254.89	184.00	-6,341.86	6,342.55	0.00	0.00	0.00	0.00
14,500.00	90.67	270.23	7,253.71	184.39	-6,441.85	6,442.54	0.00	0.00	0.00	0.00
14,600.00	90.67	270.23	7,252.54	184.79	-6,541.85	6,542.54	0.00	0.00	0.00	0.00
14,700.00	90.67	270.23	7,251.36	185.19	-6,641.84	6,642.53	0.00	0.00	0.00	0.00
14,800.00	90.67	270.23	7,250.19	185.59	-6,741.83	6,742.52	0.00	0.00	0.00	0.00
14,900.00	90.67	270.23	7,249.01	185.98	-6,841.82	6,842.52	0.00	0.00	0.00	0.00
14,985.85	90.67	270.23	7,248.00	186.32	-6,927.67	6,928.36	0.00	0.00	0.00	0.00
TD Well @ 14985.85 ft - Codell (Target--Toe)										
14,985.86	90.67	270.23	7,248.00	186.32	-6,927.67	6,928.37	0.00	0.00	0.00	0.00
MCKINSTRY 2C-21HZ_BHL										

Plan Annotations

Measured Depth (usft)	Vertical Depth (usft)	Local Coordinates		Comment
		+N/-S (usft)	+E/-W (usft)	
0.00	0.00	0.00	0.00	Tie-On to Surface @ 0.00 ft
1,849.00	1,849.00	0.00	0.00	Begin Nudge @ 1849.00 ft
2,449.00	2,444.62	10.87	61.65	End Nudge @ 2449.00 ft
6,149.00	6,063.77	144.45	819.24	Begin Drop @ 6149.00 ft
6,749.00	6,659.39	155.32	880.89	End Drop @ 6749.00 ft
6,749.69	6,660.08	155.32	880.89	Set 4.5" Liner @ 6749.69 ft
6,849.69	6,760.08	155.32	880.89	KOP @ 6849.69 ft
7,200.00	7,088.97	155.74	777.09	DLS = 10°/100 ft
7,756.43	7,333.00	157.63	301.20	End Build @ 7756.43 ft
14,985.85	7,248.00	186.32	-6,927.67	TD Well @ 14985.85 ft

Vertical Section Information

User	Angle Type	Target	Azimuth (°)	Origin Type	Origin		Start TVD (usft)
					+N/_S (usft)	+E/-W (usft)	
User		No Target (Freehand)	270.23	Slot	0.00	0.00	0.00

Survey tool program

From (usft)	To (usft)	Survey/Plan	Survey Tool
0.00	7,756.43	PERMIT REV-1	MWD+IFR+MS
7,756.43	14,985.86	PERMIT REV-1	MWD+IFR+MS

Casing Details

Measured Depth (usft)	Vertical Depth (usft)	Name	Casing Diameter (")	Hole Diameter (")
749.00	749.00	9 5/8"	9-5/8	13-1/2
7,756.43	7,333.00	7"	7	8-3/4

Plan Report for MCKINSTRY 2C-21HZ - PERMIT REV-1**Formation Details**

Measured Depth (usft)	Vertical Depth (usft)	Name	Lithology	Dip (°)	Dip Direction (°)
699.00	699.00	Fox Hills		0.00	
3,633.26	3,603.00	Parkman		0.00	
4,141.36	4,100.00	Sussex		0.00	
4,655.60	4,603.00	Shannon		0.00	
7,077.57	6,982.00	Sharon Springs		0.00	
7,164.16	7,059.00	Niobrara A		0.00	
7,216.07	7,102.00	Niobrara B		0.00	
7,310.79	7,173.00	Niobrara C		0.00	
7,557.17	7,301.00	Fort Hays		0.00	
7,756.43	7,333.00	Codell (Target--Heel)		0.00	
14,985.85	7,248.00	Codell (Target--Toe)		0.00	

Targets associated with this wellbore

Target Name	TVD (usft)	+N/-S (usft)	+E/-W (usft)	Shape
3N-R68W-Sec. 22_Section Lines	-13.00	-889.26	3.07	Polygon
3N-R68W-Sec. 23_Section Lines	-13.00	-889.26	3.07	Polygon
MCKINSTRY 2C-21HZ_HEEL	7,333.00	291.00	350.00	Point
3N-R68W-Sec. 21_Section Lines	-13.00	-889.26	3.07	Polygon
MCKINSTRY 2C-21HZ_BHL	7,248.00	186.32	-6,927.67	Point
MCKINSTRY 2C-21HZ_SHL	0.00	0.00	0.00	Point

North Reference Sheet for MCKINSTRY 1-22HZ PAD - MCKINSTRY 2C-21HZ - Plan

A

All data is in US Feet unless otherwise stated. Directions and Coordinates are relative to True North Reference .

Vertical Depths are relative to RKB = 17' @ 4988.00usft (Drilling Rig). Northing and Easting are relative to MCKINSTRY 2C-21HZ

Coordinate System is Universal Transverse Mercator (US Survey Feet), Zone 13N (108 W to 102 W) using datum North American Datum 1983, ellipsoid

Projection method is Transverse Mercator (Gauss-Kruger)

Central Meridian is -105.00°, Longitude Origin:0.000000°, Latitude Origin:0.000000°

False Easting: 1,640,416.67usft, False Northing: 0.00usft, Scale Reduction: 0.99960003

Grid Coordinates of Well: 14,605,645.82 usft N, 1,645,611.06 usft E

Geographical Coordinates of Well: 40° 13' 00.13" N, 104° 58' 53.01" W

Grid Convergence at Surface is: 0.01°

Based upon Minimum Curvature type calculations, at a Measured Depth of 14,985.86usft the Bottom Hole Displacement is 6,930.18usft in the Direction of 271.54° (True).

Magnetic Convergence at surface is: -8.48° (12 December 2014, , IGRF2010)

