



Kerr-McGee Oil & Gas Onshore LP

A subsidiary of Anadarko Petroleum Corporation

1099 18th Street
Denver, CO 80202
720-929-6000

February 10, 2015

Matt Lepore
Director, Colorado Oil and Gas Conservation Commission
Department of Natural Resources
The Chancery Building
1120 Lincoln Street, Suite 801
Denver, CO 80203

Re: **30 Day Certification Letter - 318A.e**
MCKINSTRY 2N-21HZ (Doc #400789303)
Township 3 North, Range 68 West
Section 22: NE/4NE/4
Unit Acreage: 280
Unit Spacing: SEC. 23: NWNW; SEC.22: N2N2; SEC.21: N2NE
Weld County, Colorado

Dear Director Lepore:

Kerr-McGee Oil and Gas Onshore LP (“KMG”) hereby certifies that a thirty (30) day notice has been given by certified mail to all mineral owners in the proposed wellbore spacing unit. We have not received any objections to such well location, proposed spacing unit, or additional producing formation. KMG hereby respectfully requests approval of this boundary well.

If you have any questions or issues regarding this permit, please contact Cheryl Light at (720) 929-6461.

Very truly yours,

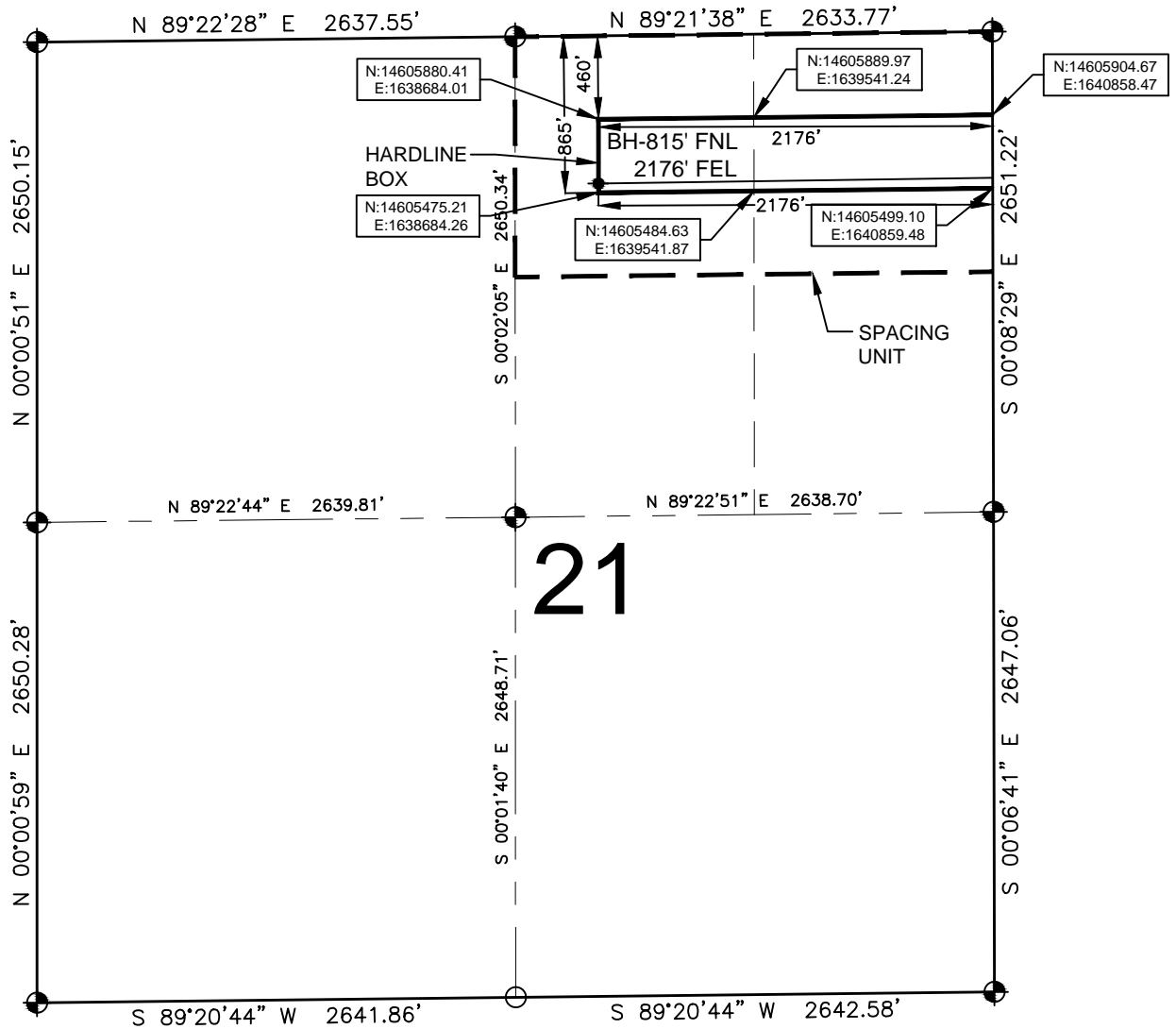
KERR-McGEE OIL AND GAS ONSHORE LP

A handwritten signature in blue ink that reads "Cheryl Light".

Cheryl Light
Senior Regulatory Analyst

HARDLINE EXHIBIT: MCKINSTRY 2N-21HZ

SECTION 21, TOWNSHIP 3 NORTH, RANGE 68 WEST, 6TH P.M.



LEGEND

- ⊕ = EXISTING MONUMENT
- = PROPOSED HEEL
- = CALCULATED POSITION
- ⊕ = BOTTOM HOLE
- BH = BOTTOM HOLE

HEEL LOCATION

NAD83
 LATITUDE= 40.216603°
 LONGITUDE= 104.980357°

 LATITUDE= 40°12'59.770"
 LONGITUDE= 104°58'49.287"

QRT/QRT SECTIONS WITHIN PATH OF THE HARDLINE

NWNE, SEC. 21
 NENE, SEC. 21

BOTTOM HOLE LOCATION

NAD83
 LATITUDE= 40.216374°
 LONGITUDE= 105.006206°

 LATITUDE= 40°12'58.946"
 LONGITUDE= 105°00'22.342"

AVAILABLE FOOTAGE

8266'

NOTES:

1. THIS DOCUMENT IS NOT A LAND SURVEY PLAT OR IMPROVEMENT SURVEY PLAT. THIS DOCUMENT DOES NOT REFLECT A FIELD SURVEY. SECTION BREAKDOWN, MONUMENTATION AND HORIZONTAL POSITIONS SHOWN ARE BASED ON THE HEEL AND BOTTOM HOLE LOCATION PROVIDED BY ANADARKO PETROLEUM CORPORATION

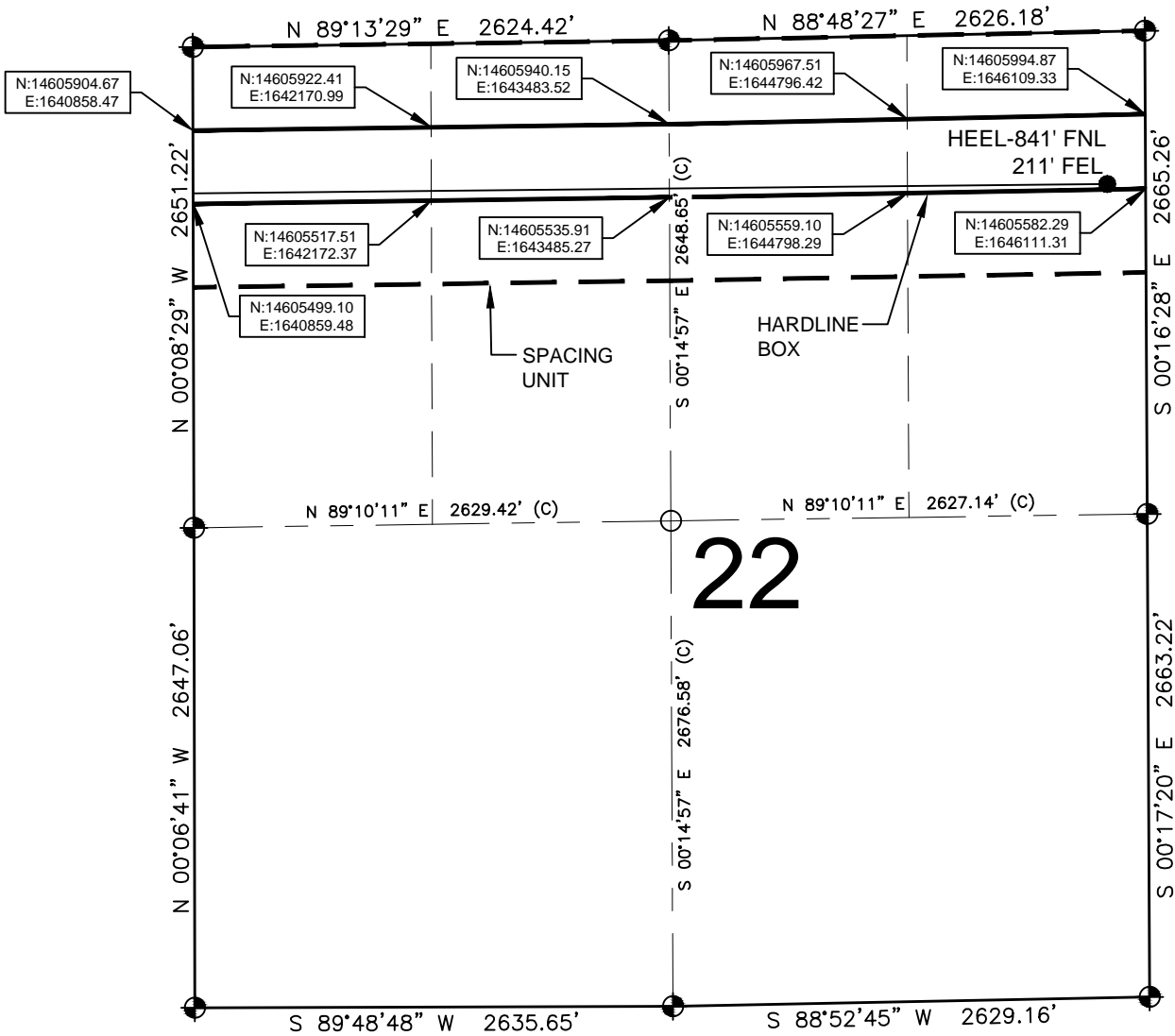


0 500 1000

SCALE: 1"= 1000'

HARDLINE EXHIBIT: MCKINSTRY 2N-21HZ

SECTION 22, TOWNSHIP 3 NORTH, RANGE 68 WEST, 6TH P.M.



LEGEND

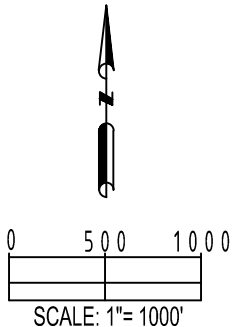
- ⊙ = EXISTING MONUMENT
- ⊙ = PROPOSED HEEL
- = CALCULATED POSITION
- ⊙ = BOTTOM HOLE
- BH = BOTTOM HOLE

QRT/QRT SECTIONS WITHIN PATH OF THE HARDLINE

- NWNW, SEC. 22
- NENW, SEC. 22
- NWNE, SEC. 22
- NENE, SEC. 22

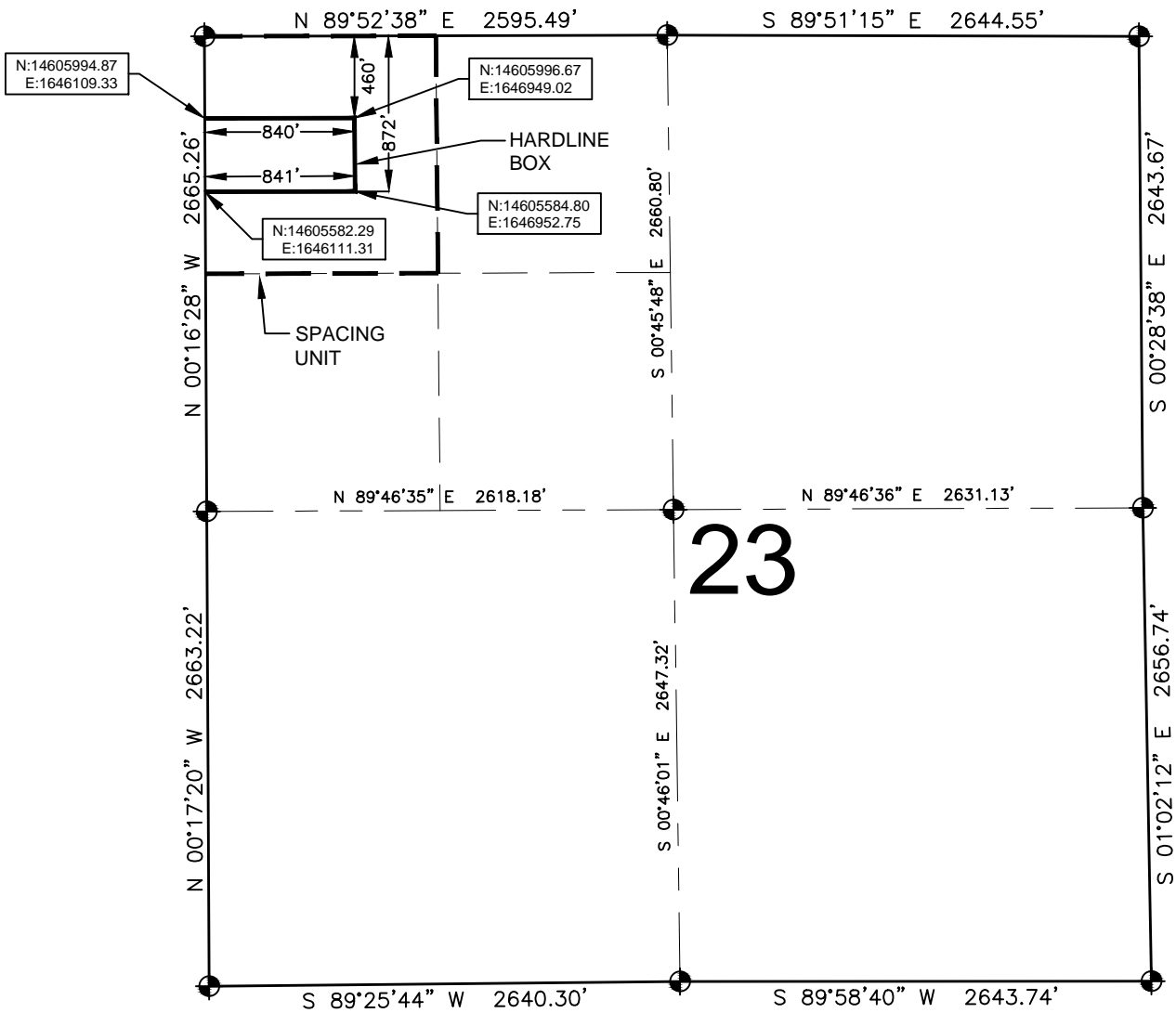
NOTES:

- THIS DOCUMENT IS NOT A LAND SURVEY PLAT OR IMPROVEMENT SURVEY PLAT. THIS DOCUMENT DOES NOT REFLECT A FIELD SURVEY. SECTION BREAKDOWN, MONUMENTATION AND HORIZONTAL POSITIONS SHOWN ARE BASED ON THE HEEL AND BOTTOM HOLE LOCATION PROVIDED BY ANADARKO PETROLEUM CORPORATION



HARDLINE EXHIBIT: MCKINSTRY 2N-21HZ

SECTION 23, TOWNSHIP 3 NORTH, RANGE 68 WEST, 6TH P.M.



LEGEND

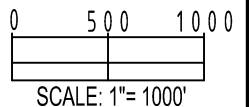
- ⊙ = EXISTING MONUMENT
- = PROPOSED HEEL
- = CALCULATED POSITION
- ⊕ = BOTTOM HOLE
- BH = BOTTOM HOLE

QRT/QRT SECTIONS WITHIN PATH OF THE HARDLINE

NWNW, SEC. 23

NOTES:

- THIS DOCUMENT IS NOT A LAND SURVEY PLAT OR IMPROVEMENT SURVEY PLAT. THIS DOCUMENT DOES NOT REFLECT A FIELD SURVEY. SECTION BREAKDOWN, MONUMENTATION AND HORIZONTAL POSITIONS SHOWN ARE BASED ON THE HEEL AND BOTTOM HOLE LOCATION PROVIDED BY ANADARKO PETROLEUM CORPORATION



PREPARED BY:
PFS
 Petroleum Field Services, LLC
 7535 Hilltop Circle
 Denver, CO 80221

SHEET 3 OF 3

DRAWING DATE: 12-20-14		HEEL LOCATION: NE 1/4 NE 1/4, SEC. 22, T3N, R68W, 6TH P.M. WELD COUNTY, COLORADO	
BY: SMF	CHECKED TJN		