

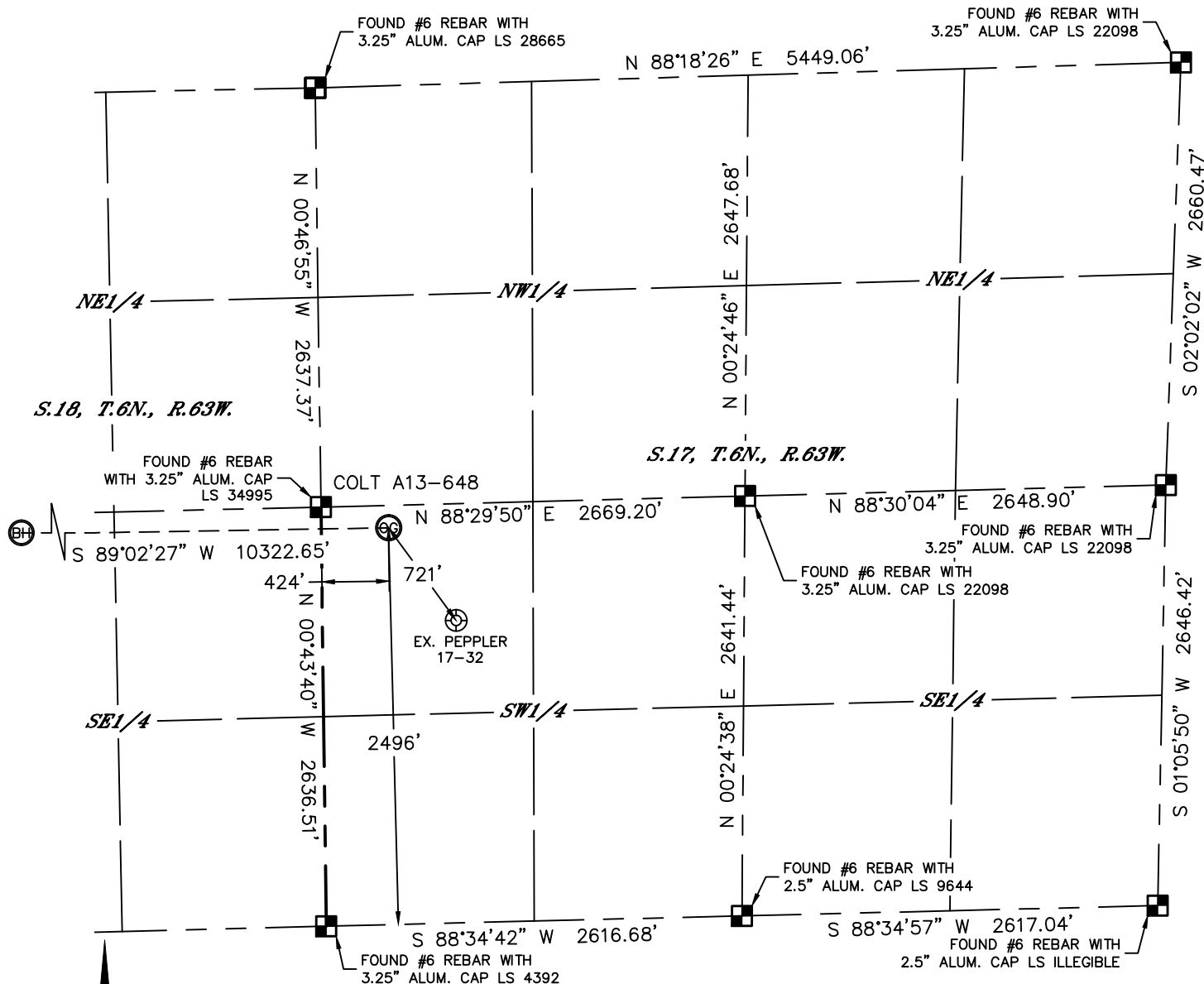


Lat40°, Inc. 6250 W. 10th Street, Unit 2, Greeley, CO 970-515-5294

WELL LOCATION CERTIFICATE

THIS MAP DOES NOT REPRESENT A BOUNDARY SURVEY

SECTION: 17
TOWNSHIP: 6N
RANGE: 63W



In accordance with a request from Greg Wilson with Noble Energy Inc. Lat40°, Inc. has determined the surface location of the COLT A13-648 to be 2496' from the SOUTH line and 424' from the WEST line as measured at right angles from the section lines of Section 17, Township 6 North, Range 63 West and the bottom hole to be 2560' from the SOUTH line and 535' from the WEST line as measured at right angles from the section lines of Section 13, Township 6 North, Range 64 West of the Sixth Principal Meridian, County of Weld, State of Colorado.

I hereby state that this Well Location Certificate was prepared by me, or under my direct supervision, that the fieldwork was completed on 7/24/2014, for and on behalf of Noble Energy Inc. That this is not a Land Survey Plat or an Improvement Survey Plat, and that it is not to be relied upon for establishment of fence, building, or other future improvement lines.

NOTE:

- 1) Bearings shown are Grid Bearings of the Colorado State Plane Coordinate System, North Zone, North American Datum 1983. The lineal dimensions as contained herein are based upon the "U.S. Survey Foot."
- 2) Ground elevations are based on an observed GPS elevation (NAVD 1988 DATUM).
- 3) IMPROVEMENTS: See LOCATION DRAWING for all visible improvements within 500' of disturbed area.
- 4) SURFACE USE: CROP LAND
- 5) INSTRUMENT OPERATOR: WYATT HALL
- 6) NEAREST EXISTING WELL: PEPPLER 17-32, ±721' SE
- NEAREST CULTURAL ITEMS:
BUILDING: ±1521' NW
BUILDING UNIT: ±1819' NW
HIGH OCCUPANCY BUILDING UNIT: 5280'+
DESIGNATED OUTSIDE ACTIVITY AREA: 5280'+
PUBLIC ROAD: ±1067' NW, (HWY 392)
ABOVEGROUND UTILITY: ±1040' NW
RAILROAD: 5280'+
PROPERTY LINE: ±424' W

SURFACE LOCATION

LAT: 40.48611°N
LONG: 104.46881°W
PDOP: 1.4
ELEV: 4664'
1/4,1/4: NWSW

BOTTOM HOLE

LAT: 40.48596°N
LONG: 104.50591°W

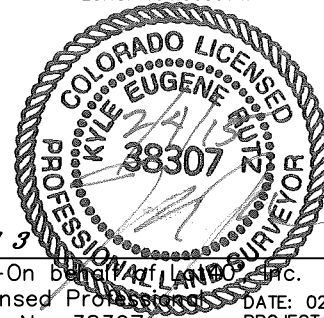
LEGEND

- = ALIQUOT MONUMENT AS DESCRIBED
○ = CALCULATED POSITION

SHEET 1 OF 3

Kyle E. Rutz-On behalf of Lat40°, Inc.
Colorado Licensed Professional
Land Surveyor No. 38307

DATE: 02/04/2015
PROJECT#: 2013082



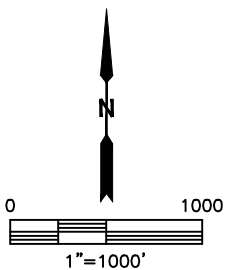
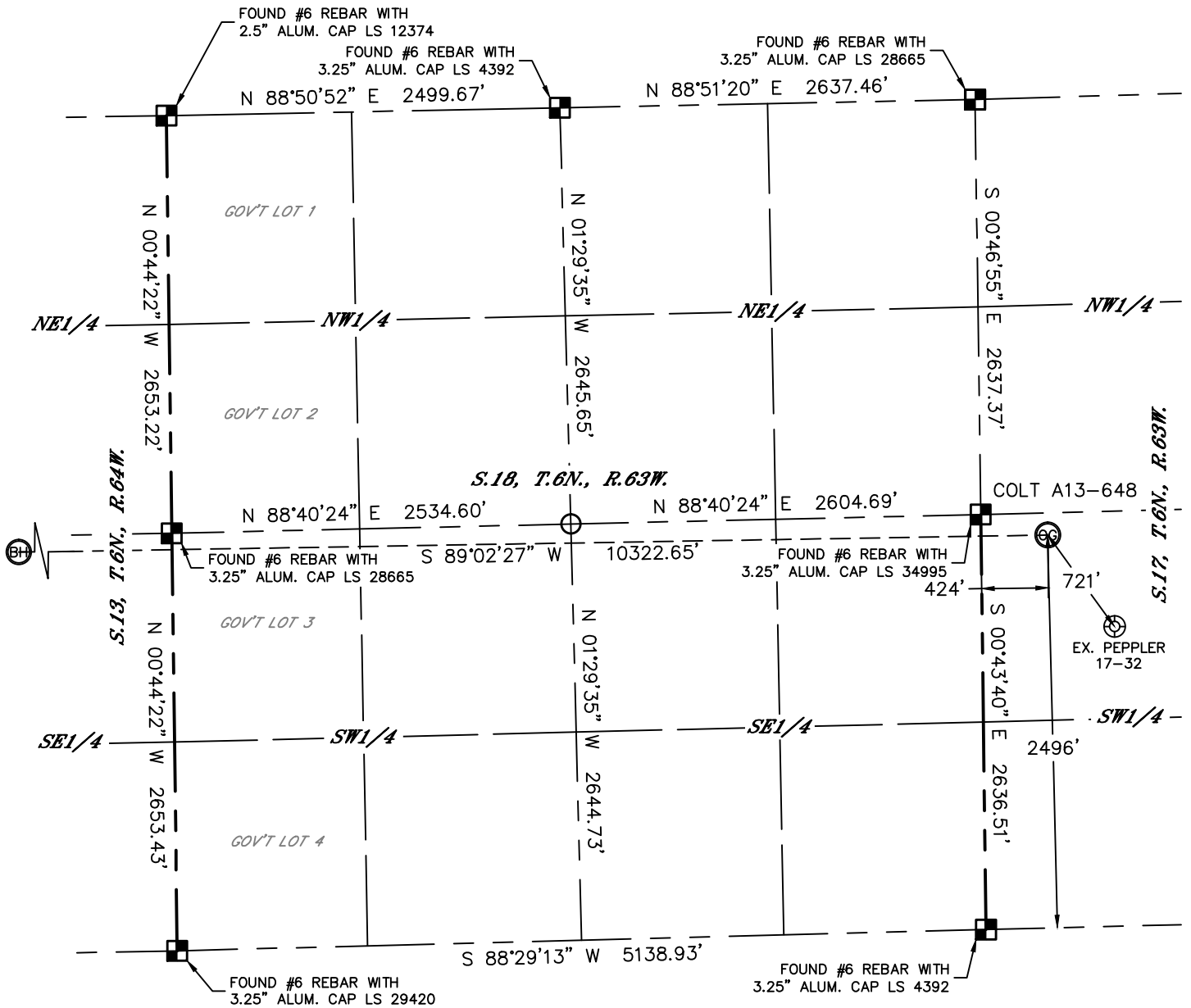


Lat40°, Inc. 6250 W. 10th Street, Unit 2, Greeley, CO 970-515-5294

WELL LOCATION CERTIFICATE

THIS MAP DOES NOT REPRESENT A BOUNDARY SURVEY

SECTION: 17
TOWNSHIP: 6N
RANGE: 63W



LEGEND

- = ALIQUOT MONUMENT AS DESCRIBED
- = CALCULATED POSITION

SHEET 2 OF 3

Kyle E. Rutz-On behalf of Lat40°, Inc.
Colorado Licensed Professional
Land Surveyor No. 38307

DATE: 02/04/2015
PROJECT#: 2013082



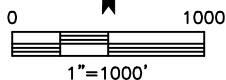
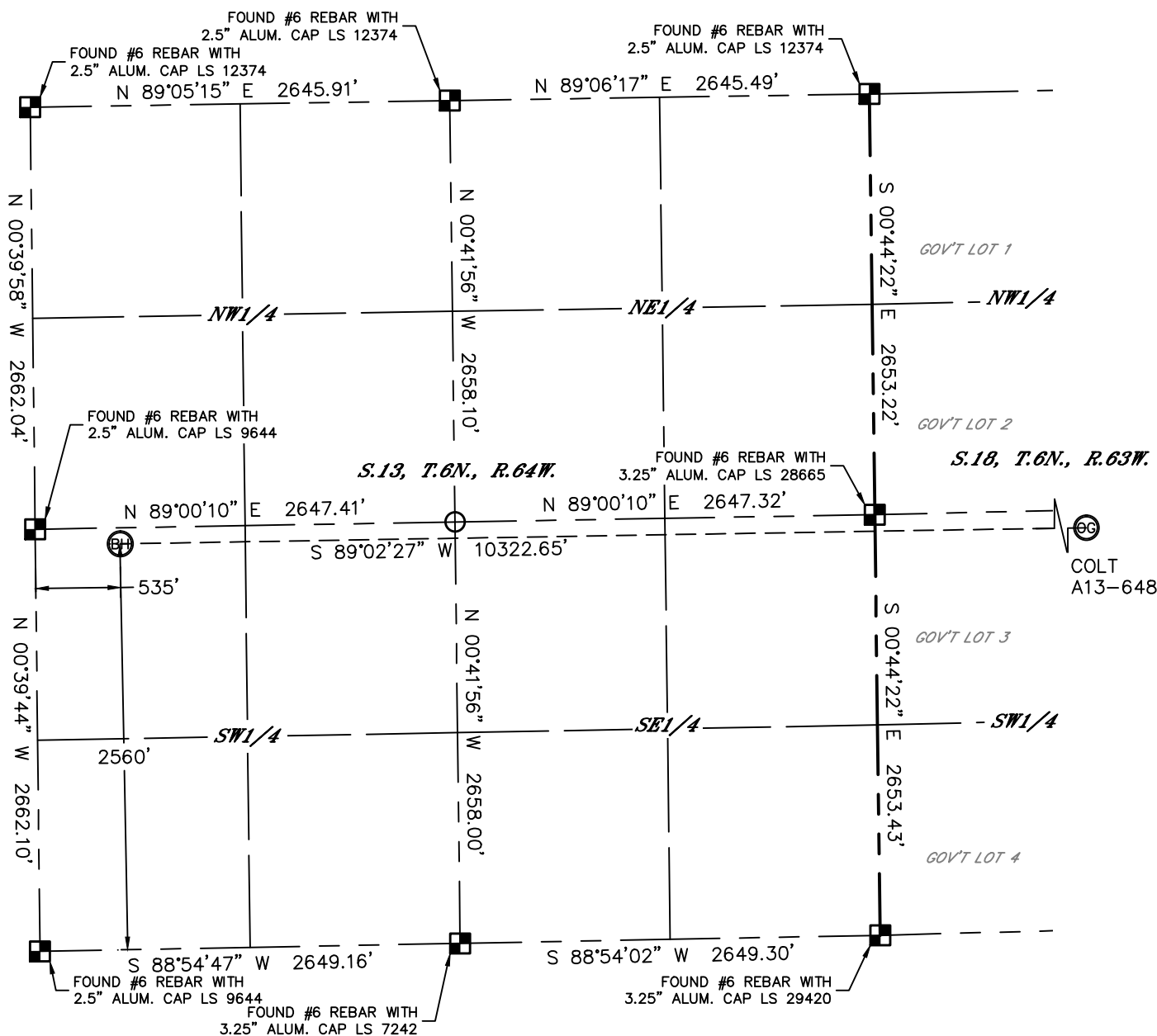


Lat40°, Inc. 6250 W. 10th Street, Unit 2, Greeley, CO 970-515-5294

WELL LOCATION CERTIFICATE

THIS MAP DOES NOT REPRESENT A BOUNDARY SURVEY

SECTION: 17
TOWNSHIP: 6N
RANGE: 63W



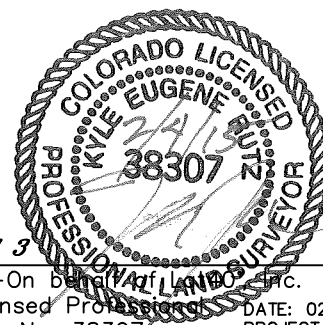
LEGEND

- = ALIQUOT MONUMENT AS DESCRIBED
- = CALCULATED POSITION

SHEET 3 OF 3

Kyle E. Rutz-On behalf of Lat40°, Inc.
Colorado Licensed Professional
Land Surveyor No. 38307

DATE: 02/04/2015
PROJECT#: 2013082



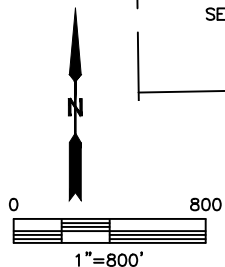
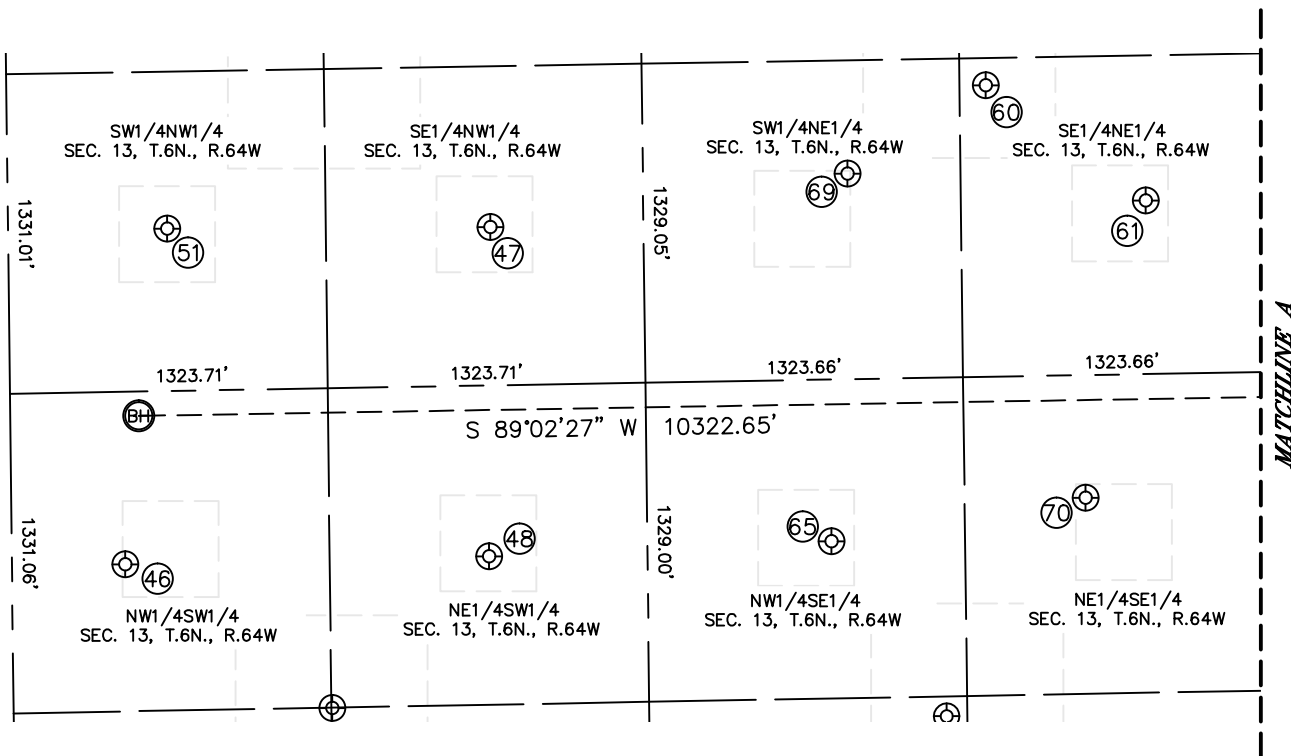
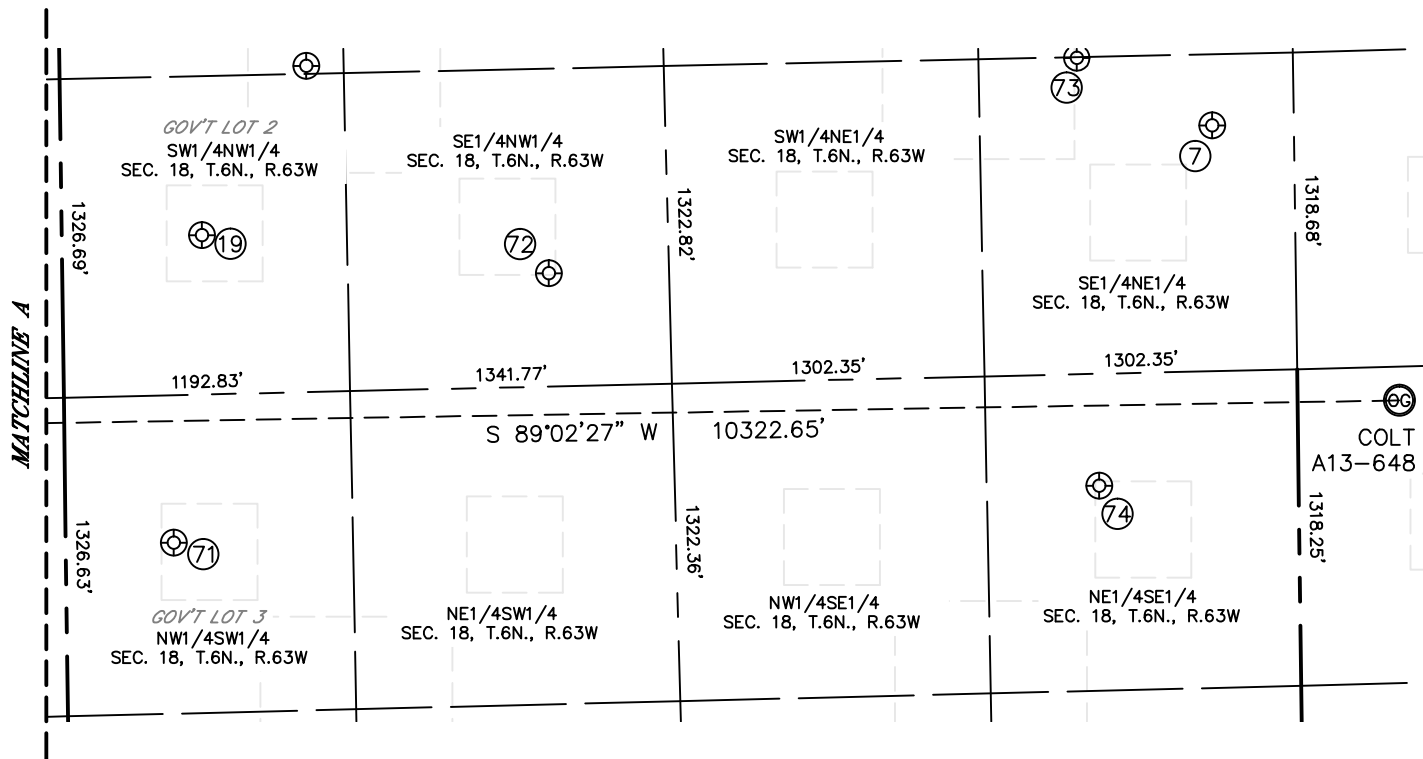


Lat40°, Inc. 6250 W. 10th Street, Unit 2, Greeley, CO 970-515-5294

SITE SKETCH

COLT AA13-648

SECTION: 17
TOWNSHIP: 6N
RANGE: 63W



SHEET 1 OF 2

DATE: 02/04/2015
PROJECT#: 2013082



Lat40°, Inc. 6250 W. 10th Street, Unit 2, Greeley, CO 970-515-5294

SITE SKETCH

COLT AA13-648

SECTION: 17
TOWNSHIP: 6N
RANGE: 63W

WELL NO.	WELL NAME	SHL FOOTAGE				SHL LAT°	SHL LONG°	PDOP	ELEV (FT.)	1/4/1/4
7	APOLLO 42-18	1616	FNL	340	FEL	40.48928	-104.47156	1.8	4661	SENE
19	EDENS 12-18	1988	FNL	584	FWL	40.48816	-104.48670	1.8	4656	SWNW
46	LAPP 13-32	1942	FSL	472	FWL	40.48427	-104.50613	2.0	4667	NWSW
47	LAPP 13-24	1999	FNL	2008	FWL	40.48808	-104.50061	1.8	4652	SENW
48	LAPP 13-31	1948	FSL	1988	FWL	40.48431	-104.50068	2.0	4650	NESW
51	LAPP 13-23	1985	FNL	663	FWL	40.48810	-104.50545	2.4	4670	SWNW
60	FOSS 13-15	1441	FNL	1213	FEL	40.48963	-104.49317	3.1	4664	SENE
61	FOSS 13-14	1932	FNL	554	FEL	40.48829	-104.49080	3.0	4656	SENE
65	TRUMP A13-10	1982	FSL	1881	FEL	40.48444	-104.49556	3.4	4653	NWSE
69	FOSS 13-13	1800	FNL	1795	FEL	40.48864	-104.49526	2.1	4657	SWNE
70	TRUMP A 13-9	2143	FSL	820	FEL	40.48490	-104.49175	2.1	4653	NESE
71	DONOH0 18-32	2037	FSL	450	FWL	40.48465	-104.48718	2.3	4655	NWSW
72	STROHAUER 18-24	2175	FNL	2027	FWL	40.48768	-104.48152	2.0	4656	SENW
73	SYNERGY DISPOSAL 15-18 I	1323	FNL	900	FEL	40.49007	-104.47357	1.7	4668	SENE
74	PEPPLER 18-41	2171	FSL	831	FEL	40.48518	-104.47331	1.8	4661	NESE

SHEET 2 OF 2

DATE: 8/22/2014
PROJECT#: 2013082