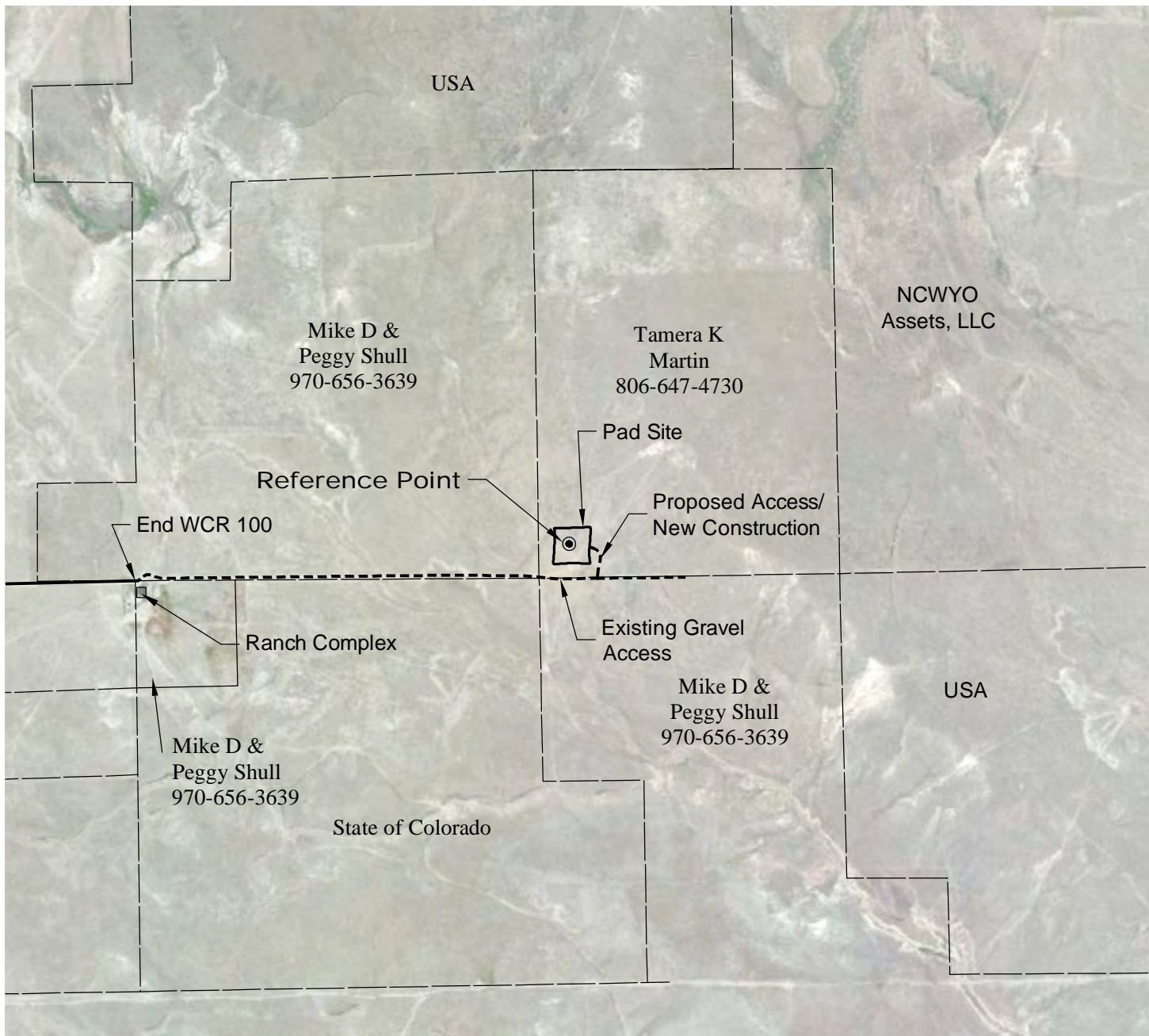


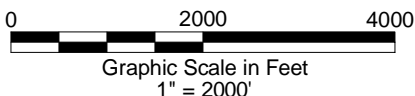
ACCESS ROAD MAP



DRIVING DIRECTIONS:

- MP 0.0 - Intersection of WCR 103 & WCR 105 in Keota;
North on WCR 105
- MP 0.8 - Right (East) on WCR 100
- MP 1.8 - End WCR 100, continue east on access to Pad
- MP 3.0 - Left on access to Pad
- MP 3.1 - Ptasnik 1-30-9-59 Pad

2/2/15



A division of Topographic Land Surveyors
www.topographic.com

CARRIZO NIOBRARA LLC
PTASNIK 1-30-9-59 PAD

LOT 4 SECTION 30 T9N R59W
6th PM WELD COUNTY COLORADO