



**Bill Barrett Corporation**

## **Bill Barrett Corp.**

Weld Co., CO

Sec.15-T4N-R62W

Anschutz Eq Farms4-62-15-0362BH2

Wellbore #1

Survey: Survey #1

## **Standard Survey Report**

15 December, 2014

# **Archer**



# Archer

Bill Barrett Corp.  
 Project: Weld Co., CO  
 Site: Sec.15-T4N-R62W  
 Well: Anschutz Eq Farms4-62-15-0362BH2  
 Wellbore: Wellbore #1  
 Design: Design #1  
 Lat: 40° 19' 8.400 N  
 Long: 104° 18' 47.030 W  
 Pad GL: 4518.00  
 KB: WELL @ 4540.00usft (Original Well Elev)

SECTION DETAILS										
MD	Inc	Azi	TVD	+N/-S	+E/-W	Dleg	TFace	VSect	Annotation	
0.00	0.00	0.00	0.00	0.00	0.00	0.00	0.00	0.00		
500.00	0.00	0.00	500.00	0.00	0.00	0.00	0.00	0.00	Start Build 2.00	
987.14	9.74	299.25	984.79	20.19	-36.05	2.00	299.25	-21.19	Start 2707.00 hold at 987.14 MD	
3694.13	9.74	299.25	3652.75	244.00	-435.74	0.00	0.00	-256.07	Start Drop -2.00	
4181.27	0.00	0.00	4137.54	264.19	-471.79	2.00	180.00	-277.26	Start 1500.00 hold at 4181.27 MD	
5681.27	0.00	0.00	5637.54	264.19	-471.79	0.00	0.00	-277.26	Start Build 12.00	
6433.70	90.29	178.40	6115.00	-215.52	-458.35	12.00	178.40	202.64	Start 9813.34 hold at 6433.70 MD	
16247.04	90.29	178.40	6065.00	-10024.88	-183.55	0.00	0.00	10015.85	TD at 16247.04	

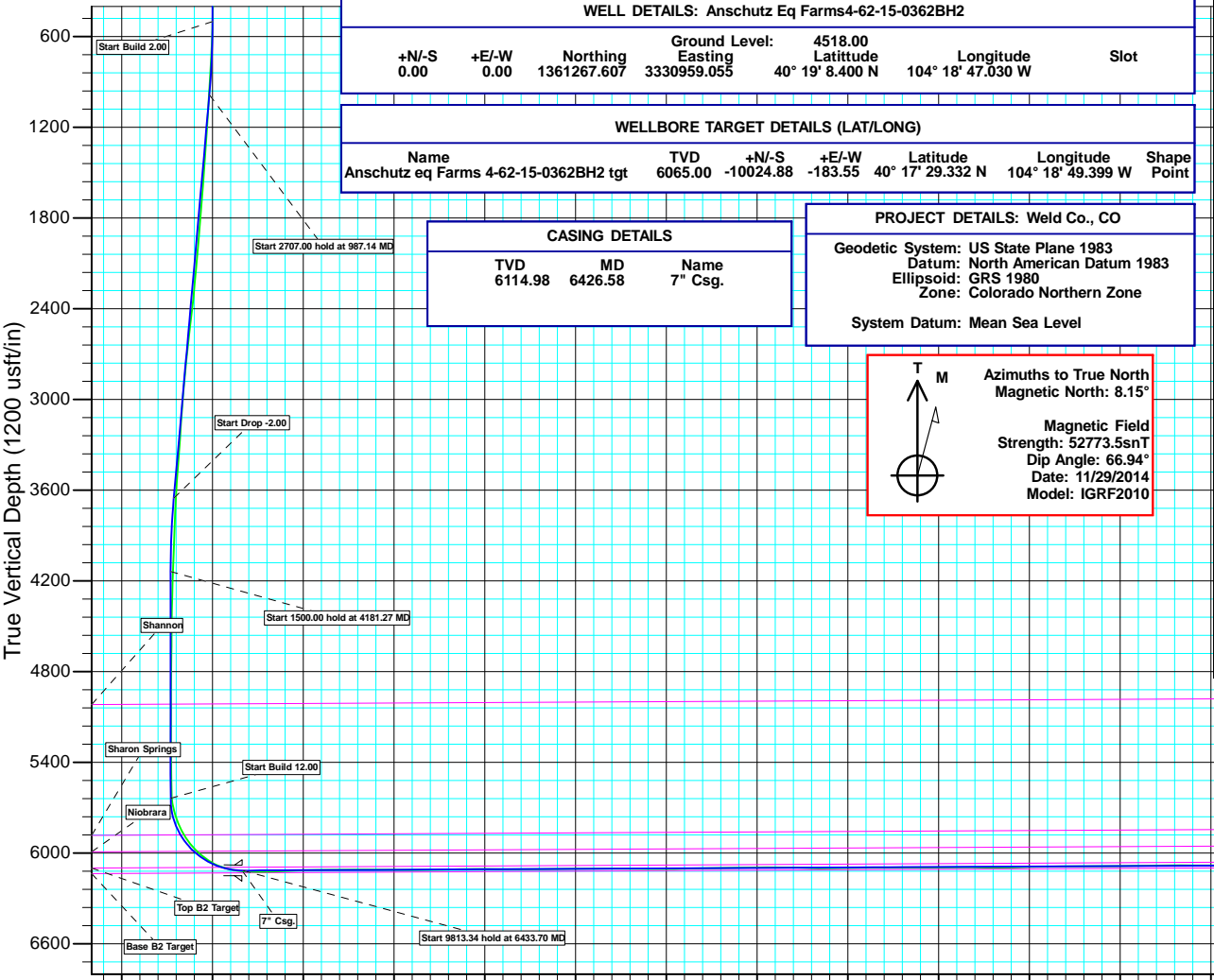
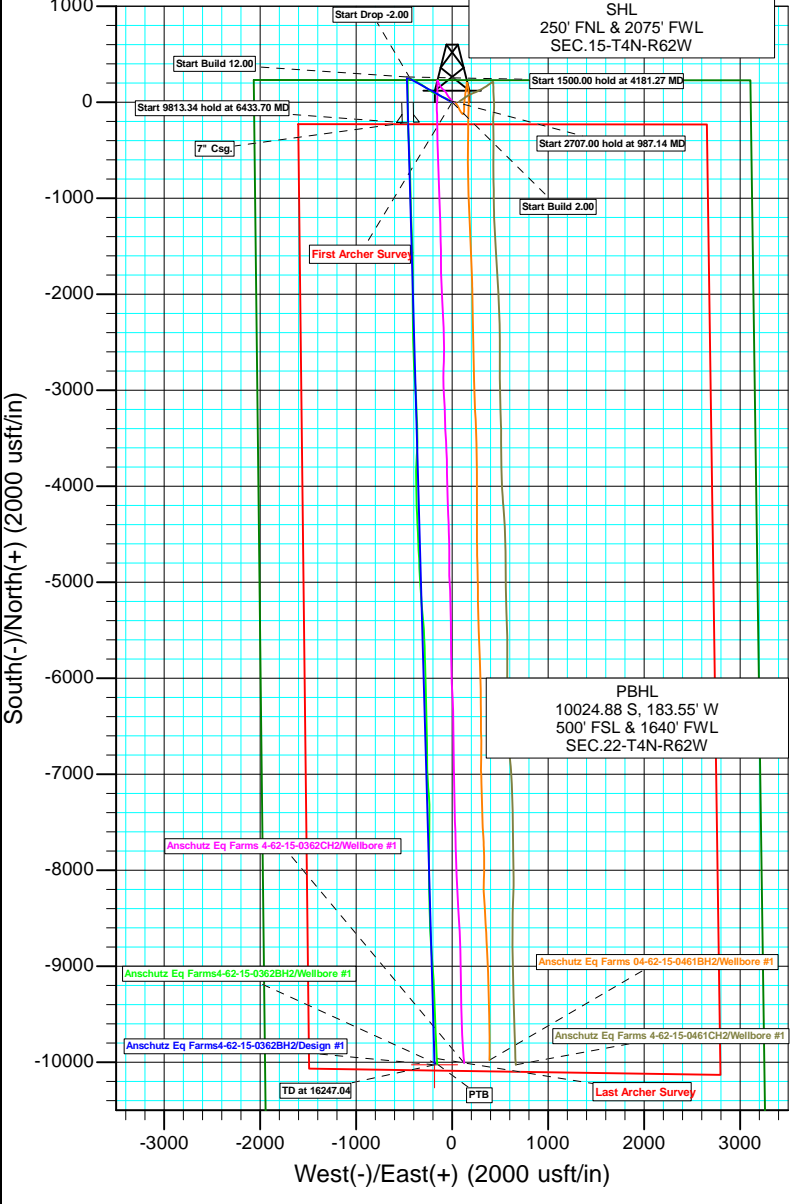
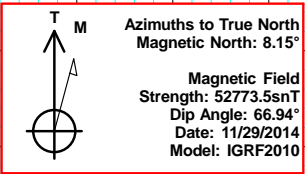
WELL DETAILS: Anschutz Eq Farms4-62-15-0362BH2						
+N/-S	+E/-W	Northing	Ground Level: Easting	Latitude	Longitude	Slot
0.00	0.00	1361267.607	4518.00	40° 19' 8.400 N	104° 18' 47.030 W	

WELLBORE TARGET DETAILS (LAT/LONG)						
Name	TVD	+N/-S	+E/-W	Latitude	Longitude	Shape Point
Anschutz eq Farms 4-62-15-0362BH2 tgt	6065.00	-10024.88	-183.55	40° 17' 29.332 N	104° 18' 49.399 W	

CASING DETAILS		
TVD	MD	Name
6114.98	6426.58	7" Csg.

**PROJECT DETAILS: Weld Co., CO**  
 Geodetic System: US State Plane 1983  
 Datum: North American Datum 1983  
 Ellipsoid: GRS 1980  
 Zone: Colorado Northern Zone  
 System Datum: Mean Sea Level



Plan: Design #1 (Anschutz Eq Farms4-62-15-0362BH2/Wellbore #1)  
 Created By: Ricky Osburn Date: 7:59, December 15 2014

0 3600 4200 4800 5400 6000 6600 7200 7800 8400 9000 9600 10200 10800  
 Vertical Section at 178.40° (1200 usft/in)

<b>Company:</b>	Bill Barrett Corp.	<b>Local Co-ordinate Reference:</b>	Well Anschutz Eq Farms4-62-15-0362BH2
<b>Project:</b>	Weld Co., CO	<b>TVD Reference:</b>	WELL @ 4540.00usft (Original Well Elev)
<b>Site:</b>	Sec.15-T4N-R62W	<b>MD Reference:</b>	WELL @ 4540.00usft (Original Well Elev)
<b>Well:</b>	Anschutz Eq Farms4-62-15-0362BH2	<b>North Reference:</b>	True
<b>Wellbore:</b>	Wellbore #1	<b>Survey Calculation Method:</b>	Minimum Curvature
<b>Design:</b>	Wellbore #1	<b>Database:</b>	EDMDBBW

<b>Project</b>	Weld Co., CO		
<b>Map System:</b>	US State Plane 1983	<b>System Datum:</b>	Mean Sea Level
<b>Geo Datum:</b>	North American Datum 1983		
<b>Map Zone:</b>	Colorado Northern Zone		

<b>Site</b>	Sec.15-T4N-R62W				
<b>Site Position:</b>		<b>Northing:</b>	1,361,232.866 usft	<b>Latitude:</b>	40° 19' 8.231 N
<b>From:</b>	Lat/Long	<b>Easting:</b>	3,329,639.637 usft	<b>Longitude:</b>	104° 19' 4.069 W
<b>Position Uncertainty:</b>	0.00 usft	<b>Slot Radius:</b>	13-3/16"	<b>Grid Convergence:</b>	0.76 °

<b>Well</b>	Anschutz Eq Farms4-62-15-0362BH2					
<b>Well Position</b>	<b>+N/-S</b>	0.00 usft	<b>Northing:</b>	1,361,267.607 usft	<b>Latitude:</b>	40° 19' 8.400 N
	<b>+E/-W</b>	0.00 usft	<b>Easting:</b>	3,330,959.055 usft	<b>Longitude:</b>	104° 18' 47.030 W
<b>Position Uncertainty</b>		0.00 usft	<b>Wellhead Elevation:</b>	usft	<b>Ground Level:</b>	4,518.00 usft

<b>Wellbore</b>	Wellbore #1				
<b>Magnetics</b>	<b>Model Name</b>	<b>Sample Date</b>	<b>Declination (°)</b>	<b>Dip Angle (°)</b>	<b>Field Strength (nT)</b>
	IGRF2010	2014/11/29	8.15	66.94	52,774

<b>Design</b>	Wellbore #1				
<b>Audit Notes:</b>					
<b>Version:</b>	1.0	<b>Phase:</b>	ACTUAL	<b>Tie On Depth:</b>	0.00
<b>Vertical Section:</b>		<b>Depth From (TVD) (usft)</b>	<b>+N/-S (usft)</b>	<b>+E/-W (usft)</b>	<b>Direction (°)</b>
		0.00	0.00	0.00	178.40

<b>Survey Program</b>	<b>Date</b>	2014/12/15			
<b>From (usft)</b>	<b>To (usft)</b>	<b>Survey (Wellbore)</b>	<b>Tool Name</b>	<b>Description</b>	
141.00	16,225.00	Survey #1 (Wellbore #1)	MWD	MWD - Standard	

<b>Survey</b>										
<b>Measured Depth (usft)</b>	<b>Inclination (°)</b>	<b>Azimuth (°)</b>	<b>Vertical Depth (usft)</b>	<b>+N/-S (usft)</b>	<b>+E/-W (usft)</b>	<b>Vertical Section (usft)</b>	<b>Dogleg Rate (°/100usft)</b>	<b>Build Rate (°/100usft)</b>	<b>Turn Rate (°/100usft)</b>	
0.00	0.00	0.00	0.00	0.00	0.00	0.00	0.00	0.00	0.00	
<b>First Archer Survey</b>										
141.00	0.60	202.60	141.00	-0.68	-0.28	0.67	0.43	0.43	0.00	
232.00	1.00	171.50	231.99	-1.91	-0.35	1.90	0.63	0.44	-34.18	
323.00	0.40	234.20	322.98	-2.88	-0.49	2.86	0.98	-0.66	68.90	
415.00	1.40	310.70	414.97	-2.33	-1.60	2.29	1.48	1.09	83.15	
506.00	2.10	317.90	505.93	-0.37	-3.56	0.27	0.80	0.77	7.91	
598.00	2.50	318.70	597.85	2.39	-6.02	-2.55	0.44	0.43	0.87	
689.00	3.70	324.30	688.72	6.26	-9.04	-6.51	1.36	1.32	6.15	
774.00	4.90	309.80	773.48	10.81	-13.43	-11.18	1.89	1.41	-17.06	
865.00	5.00	308.90	864.14	15.79	-19.50	-16.33	0.14	0.11	-0.99	
955.00	7.00	297.90	953.65	20.82	-27.40	-21.58	2.55	2.22	-12.22	
1,047.00	7.10	296.80	1,044.95	26.01	-37.43	-27.04	0.18	0.11	-1.20	

<b>Company:</b>	Bill Barrett Corp.	<b>Local Co-ordinate Reference:</b>	Well Anschutz Eq Farms4-62-15-0362BH2
<b>Project:</b>	Weld Co., CO	<b>TVD Reference:</b>	WELL @ 4540.00usft (Original Well Elev)
<b>Site:</b>	Sec.15-T4N-R62W	<b>MD Reference:</b>	WELL @ 4540.00usft (Original Well Elev)
<b>Well:</b>	Anschutz Eq Farms4-62-15-0362BH2	<b>North Reference:</b>	True
<b>Wellbore:</b>	Wellbore #1	<b>Survey Calculation Method:</b>	Minimum Curvature
<b>Design:</b>	Wellbore #1	<b>Database:</b>	EDMDBBW

Survey										
Measured Depth (usft)	Inclination (°)	Azimuth (°)	Vertical Depth (usft)	+N/-S (usft)	+E/-W (usft)	Vertical Section (usft)	Dogleg Rate (°/100usft)	Build Rate (°/100usft)	Turn Rate (°/100usft)	
1,138.00	7.00	296.80	1,135.26	31.04	-47.40	-32.36	0.11	-0.11	0.00	
1,229.00	7.20	299.70	1,225.57	36.37	-57.30	-37.96	0.45	0.22	3.19	
1,321.00	9.70	294.50	1,316.56	42.44	-69.37	-44.36	2.84	2.72	-5.65	
1,414.00	9.80	291.80	1,408.22	48.63	-83.84	-50.95	0.50	0.11	-2.90	
1,505.00	9.10	289.20	1,497.98	53.87	-97.83	-56.58	0.90	-0.77	-2.86	
1,597.00	9.40	300.80	1,588.80	60.11	-111.16	-63.19	2.05	0.33	12.61	
1,688.00	8.70	296.70	1,678.66	67.01	-123.69	-70.44	1.05	-0.77	-4.51	
1,780.00	10.60	298.60	1,769.36	74.19	-137.34	-77.99	2.09	2.07	2.07	
1,873.00	10.50	295.20	1,860.79	81.89	-152.51	-86.12	0.68	-0.11	-3.66	
1,968.00	10.80	296.20	1,954.15	89.51	-168.33	-94.17	0.37	0.32	1.05	
2,063.00	10.50	295.00	2,047.51	97.09	-184.16	-102.20	0.39	-0.32	-1.26	
2,157.00	10.70	295.20	2,139.91	104.43	-199.82	-109.97	0.22	0.21	0.21	
2,252.00	10.20	293.40	2,233.33	111.53	-215.52	-117.50	0.63	-0.53	-1.89	
2,348.00	10.70	306.20	2,327.75	120.17	-230.52	-126.56	2.47	0.52	13.33	
2,442.00	10.40	307.50	2,420.16	130.48	-244.29	-137.25	0.41	-0.32	1.38	
2,537.00	10.20	307.20	2,513.63	140.79	-257.79	-147.93	0.22	-0.21	-0.32	
2,632.00	10.40	307.30	2,607.10	151.07	-271.31	-158.59	0.21	0.21	0.11	
2,727.00	9.80	307.00	2,700.63	161.13	-284.59	-169.02	0.63	-0.63	-0.32	
2,822.00	9.80	302.30	2,794.25	170.32	-297.88	-178.57	0.84	0.00	-4.95	
2,917.00	9.20	301.30	2,887.94	178.59	-311.20	-187.21	0.66	-0.63	-1.05	
3,012.00	8.30	302.90	2,981.84	186.26	-323.45	-195.21	0.98	-0.95	1.68	
3,107.00	7.30	301.10	3,075.96	193.10	-334.38	-202.36	1.08	-1.05	-1.89	
3,202.00	7.40	301.00	3,170.18	199.37	-344.79	-208.92	0.11	0.11	-0.11	
3,297.00	7.10	301.00	3,264.42	205.54	-355.07	-215.37	0.32	-0.32	0.00	
3,391.00	7.70	300.80	3,357.63	211.76	-365.45	-221.88	0.64	0.64	-0.21	
3,486.00	8.00	301.20	3,451.74	218.44	-376.58	-228.87	0.32	0.32	0.42	
3,580.00	8.40	294.90	3,544.78	224.72	-388.40	-235.48	1.05	0.43	-6.70	
3,675.00	8.10	293.70	3,638.80	230.33	-400.82	-241.43	0.36	-0.32	-1.26	
3,769.00	5.20	295.50	3,732.16	234.83	-410.73	-246.21	3.09	-3.09	1.91	
3,864.00	4.70	294.20	3,826.80	238.28	-418.17	-249.86	0.54	-0.53	-1.37	
3,960.00	4.50	292.70	3,922.49	241.34	-425.23	-253.12	0.24	-0.21	-1.56	
4,055.00	4.30	298.70	4,017.21	244.49	-431.79	-256.45	0.53	-0.21	6.32	
4,149.00	4.30	302.10	4,110.95	248.06	-437.87	-260.19	0.27	0.00	3.62	
4,244.00	4.00	304.30	4,205.70	251.82	-443.62	-264.10	0.36	-0.32	2.32	
4,339.00	3.70	289.10	4,300.49	254.69	-449.26	-267.13	1.12	-0.32	-16.00	
4,434.00	3.20	290.20	4,395.32	256.61	-454.64	-269.20	0.53	-0.53	1.16	
4,529.00	2.70	281.60	4,490.19	257.97	-459.32	-270.70	0.70	-0.53	-9.05	
4,623.00	2.90	276.00	4,584.08	258.66	-463.85	-271.52	0.36	0.21	-5.96	
4,719.00	1.30	293.40	4,680.01	259.35	-467.27	-272.30	1.78	-1.67	18.12	
4,814.00	1.00	313.00	4,774.99	260.34	-468.86	-273.33	0.52	-0.32	20.63	
4,908.00	0.70	319.60	4,868.98	261.34	-469.84	-274.36	0.34	-0.32	7.02	
5,003.00	0.30	330.90	4,963.98	262.00	-470.33	-275.03	0.43	-0.42	11.89	
5,098.00	0.20	85.10	5,058.98	262.23	-470.29	-275.26	0.45	-0.11	120.21	
5,193.00	0.30	140.30	5,153.98	262.05	-469.97	-275.07	0.26	0.11	58.11	
5,288.00	0.50	130.60	5,248.97	261.59	-469.49	-274.60	0.22	0.21	-10.21	
5,383.00	0.50	130.00	5,343.97	261.06	-468.86	-274.05	0.01	0.00	-0.63	
5,478.00	0.40	132.20	5,438.97	260.57	-468.30	-273.54	0.11	-0.11	2.32	
5,572.00	0.70	126.50	5,532.96	260.01	-467.59	-272.96	0.32	0.32	-6.06	
5,668.00	3.30	173.70	5,628.90	256.91	-466.82	-269.84	2.99	2.71	49.17	
5,710.00	9.10	171.80	5,670.64	252.42	-466.21	-265.34	13.82	13.81	-4.52	
5,763.00	17.10	173.10	5,722.22	240.51	-464.67	-253.39	15.10	15.09	2.45	
5,810.00	18.40	174.00	5,766.98	226.28	-463.07	-239.12	2.83	2.77	1.91	
5,858.00	21.70	178.80	5,812.07	209.86	-462.09	-222.69	7.68	6.87	10.00	
5,905.00	28.50	178.50	5,854.60	189.94	-461.61	-202.76	14.47	14.47	-0.64	

<b>Company:</b>	Bill Barrett Corp.	<b>Local Co-ordinate Reference:</b>	Well Anschutz Eq Farms4-62-15-0362BH2
<b>Project:</b>	Weld Co., CO	<b>TVD Reference:</b>	WELL @ 4540.00usft (Original Well Elev)
<b>Site:</b>	Sec.15-T4N-R62W	<b>MD Reference:</b>	WELL @ 4540.00usft (Original Well Elev)
<b>Well:</b>	Anschutz Eq Farms4-62-15-0362BH2	<b>North Reference:</b>	True
<b>Wellbore:</b>	Wellbore #1	<b>Survey Calculation Method:</b>	Minimum Curvature
<b>Design:</b>	Wellbore #1	<b>Database:</b>	EDMDBBW

Survey										
Measured Depth (usft)	Inclination (°)	Azimuth (°)	Vertical Depth (usft)	+N/-S (usft)	+E/-W (usft)	Vertical Section (usft)	Dogleg Rate (°/100usft)	Build Rate (°/100usft)	Turn Rate (°/100usft)	
5,953.00	33.70	180.20	5,895.69	165.16	-461.36	-177.98	10.99	10.83	3.54	
6,000.00	36.90	181.00	5,934.04	138.01	-461.65	-150.85	6.88	6.81	1.70	
6,047.00	43.70	180.90	5,969.87	107.63	-462.15	-120.49	14.47	14.47	-0.21	
6,094.00	49.40	179.40	6,002.18	73.53	-462.22	-86.40	12.35	12.13	-3.19	
6,142.00	53.30	179.50	6,032.15	36.05	-461.86	-48.93	8.13	8.12	0.21	
6,189.00	58.30	179.80	6,058.56	-2.81	-461.63	-10.08	10.65	10.64	0.64	
6,237.00	66.90	179.60	6,080.63	-45.38	-461.40	32.48	17.92	17.92	-0.42	
6,284.00	73.70	180.00	6,096.46	-89.61	-461.25	76.69	14.49	14.47	0.85	
6,331.00	77.20	179.90	6,108.27	-135.09	-461.21	122.16	7.45	7.45	-0.21	
6,399.00	84.90	178.80	6,118.84	-202.21	-460.44	189.27	11.44	11.32	-1.62	
6,421.00	86.80	178.20	6,120.43	-224.14	-459.87	211.21	9.05	8.64	-2.73	
6,516.00	90.20	177.50	6,122.92	-319.03	-456.31	306.16	3.65	3.58	-0.74	
6,611.00	92.20	177.00	6,120.93	-413.89	-451.75	401.12	2.17	2.11	-0.53	
6,706.00	92.20	177.70	6,117.28	-508.72	-447.36	496.03	0.74	0.00	0.74	
6,800.00	92.10	177.70	6,113.76	-602.58	-443.59	589.96	0.11	-0.11	0.00	
6,896.00	91.10	177.70	6,111.08	-698.46	-439.74	685.91	1.04	-1.04	0.00	
6,991.00	89.80	178.70	6,110.33	-793.41	-436.76	780.91	1.73	-1.37	1.05	
7,085.00	90.60	178.00	6,110.00	-887.37	-434.05	874.90	1.13	0.85	-0.74	
7,180.00	90.50	178.50	6,109.09	-982.32	-431.15	969.90	0.54	-0.11	0.53	
7,276.00	90.20	179.10	6,108.50	-1,078.30	-429.14	1,065.89	0.70	-0.31	0.62	
7,371.00	88.70	178.60	6,109.42	-1,173.27	-427.23	1,160.88	1.66	-1.58	-0.53	
7,465.00	89.50	178.30	6,110.89	-1,267.22	-424.69	1,254.87	0.91	0.85	-0.32	
7,560.00	90.20	178.00	6,111.14	-1,362.17	-421.62	1,349.87	0.80	0.74	-0.32	
7,655.00	91.30	177.50	6,109.90	-1,457.09	-417.89	1,444.85	1.27	1.16	-0.53	
7,749.00	90.70	177.30	6,108.26	-1,550.98	-413.63	1,538.82	0.67	-0.64	-0.21	
7,844.00	90.90	178.50	6,106.93	-1,645.90	-410.15	1,633.81	1.28	0.21	1.26	
7,939.00	90.60	179.50	6,105.69	-1,740.88	-408.49	1,728.80	1.10	-0.32	1.05	
8,033.00	89.30	180.90	6,105.77	-1,834.87	-408.82	1,822.74	2.03	-1.38	1.49	
8,128.00	89.60	180.30	6,106.68	-1,929.86	-409.81	1,917.67	0.71	0.32	-0.63	
8,223.00	90.20	180.20	6,106.85	-2,024.86	-410.23	2,012.62	0.64	0.63	-0.11	
8,317.00	90.90	179.70	6,105.94	-2,118.86	-410.15	2,106.58	0.92	0.74	-0.53	
8,412.00	89.30	179.40	6,105.78	-2,213.85	-409.40	2,201.56	1.71	-1.68	-0.32	
8,505.00	90.50	179.40	6,105.94	-2,306.84	-408.43	2,294.54	1.29	1.29	0.00	
8,600.00	91.40	179.20	6,104.37	-2,401.82	-407.27	2,389.52	0.97	0.95	-0.21	
8,695.00	89.90	178.40	6,103.29	-2,496.79	-405.28	2,484.50	1.79	-1.58	-0.84	
8,790.00	91.80	178.60	6,101.88	-2,591.75	-402.79	2,579.49	2.01	2.00	0.21	
8,885.00	88.70	177.20	6,101.46	-2,686.67	-399.31	2,674.47	3.58	-3.26	-1.47	
8,980.00	89.20	176.90	6,103.21	-2,781.52	-394.42	2,769.43	0.61	0.53	-0.32	
9,075.00	89.50	176.60	6,104.28	-2,876.37	-389.04	2,864.38	0.45	0.32	-0.32	
9,170.00	90.10	176.50	6,104.61	-2,971.19	-383.32	2,959.33	0.64	0.63	-0.11	
9,265.00	90.90	176.20	6,103.79	-3,066.00	-377.27	3,054.27	0.90	0.84	-0.32	
9,360.00	91.20	178.60	6,102.04	-3,160.87	-372.96	3,149.23	2.55	0.32	2.53	
9,455.00	91.00	176.90	6,100.22	-3,255.78	-369.23	3,244.20	1.80	-0.21	-1.79	
9,549.00	90.80	178.10	6,098.74	-3,349.68	-365.14	3,338.18	1.29	-0.21	1.28	
9,644.00	91.00	178.70	6,097.25	-3,444.63	-362.48	3,433.16	0.67	0.21	0.63	
9,739.00	90.80	180.60	6,095.76	-3,539.61	-361.90	3,528.13	2.01	-0.21	2.00	
9,834.00	91.10	183.40	6,094.18	-3,634.53	-365.22	3,622.92	2.96	0.32	2.95	
9,929.00	89.50	183.40	6,093.69	-3,729.36	-370.85	3,717.55	1.68	-1.68	0.00	
10,024.00	88.70	181.60	6,095.18	-3,824.25	-374.99	3,812.29	2.07	-0.84	-1.89	
10,119.00	87.80	178.80	6,098.08	-3,919.20	-375.33	3,907.19	3.09	-0.95	-2.95	
10,215.00	89.80	178.50	6,100.09	-4,015.14	-373.07	4,003.16	2.11	2.08	-0.31	
10,310.00	91.50	179.00	6,099.01	-4,110.11	-370.99	4,098.15	1.87	1.79	0.53	
10,405.00	90.50	178.10	6,097.36	-4,205.06	-368.59	4,193.13	1.42	-1.05	-0.95	
10,499.00	91.30	178.10	6,095.88	-4,299.00	-365.47	4,287.12	0.85	0.85	0.00	

<b>Company:</b>	Bill Barrett Corp.	<b>Local Co-ordinate Reference:</b>	Well Anschutz Eq Farms4-62-15-0362BH2
<b>Project:</b>	Weld Co., CO	<b>TVD Reference:</b>	WELL @ 4540.00usft (Original Well Elev)
<b>Site:</b>	Sec.15-T4N-R62W	<b>MD Reference:</b>	WELL @ 4540.00usft (Original Well Elev)
<b>Well:</b>	Anschutz Eq Farms4-62-15-0362BH2	<b>North Reference:</b>	True
<b>Wellbore:</b>	Wellbore #1	<b>Survey Calculation Method:</b>	Minimum Curvature
<b>Design:</b>	Wellbore #1	<b>Database:</b>	EDMDBBW

Survey										
Measured Depth (usft)	Inclination (°)	Azimuth (°)	Vertical Depth (usft)	+N/-S (usft)	+E/-W (usft)	Vertical Section (usft)	Dogleg Rate (°/100usft)	Build Rate (°/100usft)	Turn Rate (°/100usft)	
10,591.00	89.20	177.50	6,095.48	-4,390.93	-361.94	4,379.11	2.37	-2.28	-0.65	
10,682.00	89.50	177.20	6,096.51	-4,481.82	-357.73	4,470.09	0.47	0.33	-0.33	
10,773.00	90.10	176.90	6,096.83	-4,572.70	-353.05	4,561.06	0.74	0.66	-0.33	
10,865.00	91.40	176.90	6,095.62	-4,664.56	-348.08	4,653.02	1.41	1.41	0.00	
10,956.00	90.30	177.80	6,094.27	-4,755.45	-343.87	4,743.99	1.56	-1.21	0.99	
11,048.00	90.40	177.50	6,093.71	-4,847.37	-340.10	4,835.98	0.34	0.11	-0.33	
11,139.00	90.40	177.40	6,093.08	-4,938.27	-336.05	4,926.97	0.11	0.00	-0.11	
11,230.00	88.70	176.20	6,093.79	-5,029.13	-330.97	5,017.92	2.29	-1.87	-1.32	
11,320.00	89.10	176.30	6,095.52	-5,118.92	-325.08	5,107.84	0.46	0.44	0.11	
11,411.00	90.30	175.30	6,095.99	-5,209.67	-318.42	5,198.75	1.72	1.32	-1.10	
11,503.00	91.80	174.90	6,094.31	-5,301.31	-310.56	5,290.57	1.69	1.63	-0.43	
11,592.00	91.30	174.70	6,091.90	-5,389.91	-302.50	5,379.37	0.61	-0.56	-0.22	
11,685.00	91.20	176.40	6,089.87	-5,482.61	-295.29	5,472.23	1.83	-0.11	1.83	
11,777.00	90.10	177.50	6,088.83	-5,574.47	-290.39	5,564.19	1.69	-1.20	1.20	
11,868.00	91.10	178.00	6,087.88	-5,665.39	-286.82	5,655.17	1.23	1.10	0.55	
11,962.00	90.70	178.70	6,086.40	-5,759.34	-284.11	5,749.16	0.86	-0.43	0.74	
12,054.00	89.60	177.70	6,086.16	-5,851.29	-281.22	5,841.16	1.62	-1.20	-1.09	
12,145.00	90.90	178.70	6,085.76	-5,942.24	-278.37	5,932.15	1.80	1.43	1.10	
12,237.00	90.70	178.70	6,084.48	-6,034.21	-276.28	6,024.14	0.22	-0.22	0.00	
12,330.00	90.50	178.90	6,083.50	-6,127.19	-274.33	6,117.14	0.30	-0.22	0.22	
12,421.00	90.80	178.50	6,082.47	-6,218.16	-272.27	6,208.13	0.55	0.33	-0.44	
12,513.00	90.90	177.70	6,081.11	-6,310.09	-269.22	6,300.12	0.88	0.11	-0.87	
12,605.00	89.80	178.90	6,080.54	-6,402.05	-266.49	6,392.11	1.77	-1.20	1.30	
12,697.00	89.80	178.00	6,080.87	-6,494.01	-264.00	6,484.11	0.98	0.00	-0.98	
12,788.00	89.80	179.60	6,081.18	-6,584.99	-262.09	6,575.11	1.76	0.00	1.76	
12,880.00	89.90	180.90	6,081.42	-6,676.99	-262.49	6,667.05	1.42	0.11	1.41	
12,971.00	90.40	179.40	6,081.19	-6,767.98	-262.73	6,758.01	1.74	0.55	-1.65	
13,062.00	90.00	178.90	6,080.87	-6,858.97	-261.38	6,849.00	0.70	-0.44	-0.55	
13,154.00	89.50	177.90	6,081.27	-6,950.93	-258.81	6,941.00	1.22	-0.54	-1.09	
13,245.00	89.00	176.70	6,082.46	-7,041.82	-254.53	7,031.97	1.43	-0.55	-1.32	
13,337.00	89.80	175.80	6,083.42	-7,133.62	-248.51	7,123.90	1.31	0.87	-0.98	
13,428.00	91.90	175.90	6,082.07	-7,224.37	-241.93	7,214.79	2.31	2.31	0.11	
13,520.00	93.70	178.50	6,077.58	-7,316.14	-237.44	7,306.65	3.43	1.96	2.83	
13,611.00	91.70	179.90	6,073.29	-7,407.02	-236.17	7,397.54	2.68	-2.20	1.54	
13,703.00	91.20	181.20	6,070.96	-7,498.98	-237.05	7,489.44	1.51	-0.54	1.41	
13,794.00	89.70	180.80	6,070.25	-7,589.96	-238.64	7,580.34	1.71	-1.65	-0.44	
13,885.00	89.40	179.90	6,070.96	-7,680.96	-239.20	7,671.28	1.04	-0.33	-0.99	
13,977.00	90.00	180.00	6,071.45	-7,772.96	-239.12	7,763.25	0.66	0.65	0.11	
14,068.00	90.30	180.10	6,071.21	-7,863.96	-239.19	7,854.21	0.35	0.33	0.11	
14,159.00	89.50	180.50	6,071.37	-7,954.95	-239.67	7,945.16	0.98	-0.88	0.44	
14,251.00	89.90	180.30	6,071.85	-8,046.95	-240.31	8,037.10	0.49	0.43	-0.22	
14,343.00	89.80	179.50	6,072.09	-8,138.95	-240.15	8,129.07	0.88	-0.11	-0.87	
14,434.00	89.70	178.90	6,072.49	-8,229.94	-238.88	8,220.06	0.67	-0.11	-0.66	
14,524.00	89.80	178.40	6,072.88	-8,319.91	-236.76	8,310.06	0.57	0.11	-0.56	
14,616.00	90.20	178.50	6,072.88	-8,411.88	-234.27	8,402.06	0.45	0.43	0.11	
14,708.00	89.90	178.30	6,072.80	-8,503.84	-231.70	8,494.06	0.39	-0.33	-0.22	
14,799.00	89.80	178.10	6,073.04	-8,594.80	-228.85	8,585.06	0.25	-0.11	-0.22	
14,891.00	89.60	176.50	6,073.52	-8,686.69	-224.51	8,677.03	1.75	-0.22	-1.74	
14,982.00	88.40	176.10	6,075.11	-8,777.48	-218.64	8,767.96	1.39	-1.32	-0.44	
15,073.00	89.20	176.70	6,077.01	-8,868.28	-212.93	8,858.88	1.10	0.88	0.66	
15,164.00	90.50	175.00	6,077.25	-8,959.04	-206.34	8,949.79	2.35	1.43	-1.87	
15,255.00	91.50	175.80	6,075.66	-9,049.73	-199.05	9,040.65	1.41	1.10	0.88	
15,347.00	92.00	177.40	6,072.85	-9,141.52	-193.59	9,132.55	1.82	0.54	1.74	
15,438.00	91.90	177.30	6,069.76	-9,232.37	-189.39	9,223.49	0.16	-0.11	-0.11	

<b>Company:</b>	Bill Barrett Corp.	<b>Local Co-ordinate Reference:</b>	Well Anschutz Eq Farms4-62-15-0362BH2
<b>Project:</b>	Weld Co., CO	<b>TVD Reference:</b>	WELL @ 4540.00usft (Original Well Elev)
<b>Site:</b>	Sec.15-T4N-R62W	<b>MD Reference:</b>	WELL @ 4540.00usft (Original Well Elev)
<b>Well:</b>	Anschutz Eq Farms4-62-15-0362BH2	<b>North Reference:</b>	True
<b>Wellbore:</b>	Wellbore #1	<b>Survey Calculation Method:</b>	Minimum Curvature
<b>Design:</b>	Wellbore #1	<b>Database:</b>	EDMDBBW

Survey										
Measured Depth (usft)	Inclination (°)	Azimuth (°)	Vertical Depth (usft)	+N/-S (usft)	+E/-W (usft)	Vertical Section (usft)	Dogleg Rate (°/100usft)	Build Rate (°/100usft)	Turn Rate (°/100usft)	
15,533.00	90.30	178.00	6,067.93	-9,327.27	-185.49	9,318.46	1.84	-1.68	0.74	
15,628.00	90.20	177.60	6,067.52	-9,422.20	-181.85	9,413.45	0.43	-0.11	-0.42	
15,723.00	91.10	178.50	6,066.44	-9,517.14	-178.61	9,508.44	1.34	0.95	0.95	
15,818.00	91.10	177.30	6,064.62	-9,612.05	-175.13	9,603.42	1.26	0.00	-1.26	
15,912.00	90.50	178.00	6,063.30	-9,705.97	-171.28	9,697.40	0.98	-0.64	0.74	
16,007.00	90.90	177.40	6,062.14	-9,800.88	-167.47	9,792.38	0.76	0.42	-0.63	
16,102.00	90.90	176.40	6,060.65	-9,895.73	-162.33	9,887.34	1.05	0.00	-1.05	
<b>Last Archer Survey</b>										
16,168.00	91.00	176.10	6,059.56	-9,961.58	-158.02	9,953.28	0.48	0.15	-0.45	
<b>PTB - Anschutz eq Farms 4-62-15-0362BH2 tgt</b>										
16,225.00	91.00	176.10	6,058.56	-10,018.44	-154.14	10,010.23	0.00	0.00	0.00	

Survey Annotations					
Measured Depth (usft)	Vertical Depth (usft)	Local Coordinates		Comment	
		+N/-S (usft)	+E/-W (usft)		
141.00	141.00	-0.68	-0.28	First Archer Survey	
16,168.00	6,059.56	-9,961.58	-158.02	Last Archer Survey	
16,225.00	6,058.56	-10,018.44	-154.14	PTB	

Checked By: _____	Approved By: _____	Date: _____
-------------------	--------------------	-------------