

The Road to Excellence Starts with Safety

Sold To #: 346707		Ship To #: 2878085		Quote #:		Sales Order #: 8482916	
Customer: QUICKSILVER RESOURCES INC-EBUSINESS				Customer Rep: Hord, Ryan			
Well Name: Horsegulch Federal			Well #: 13-12		API/UWI #:		
Field:		City (SAP): CRAIG		County/Parish: Moffat		State: Colorado	
Legal Description: Section 12 Township 6N Range 93W							
Lat:				Long:			
Contractor: DHS			Rig/Platform Name/Num: 6				
Job Purpose: Cement Production Casing						Ticket Amount:	
Well Type: Exploratory / Wildcat			Job Type: Cement Production Casing				
Sales Person: SCOTT, KYLE			Srv Supervisor: CARPENTER, LANCE			MBU ID Emp #: 461737	

Activity Description	Date/Time	Cht #	Rate bbl/min	Volume bbl		Pressure psig		Comments
				Stage	Total	Tubing	Casing	
Call Out	09/21/2011 02:00							CREW CALLED OUT
Pre-Convoy Safety Meeting	09/21/2011 03:45							CREW HAS PRE CONVOY SAFETY MEETINGD
Depart from Service Center or Other Site	09/21/2011 04:00							CREW DEPARTS FROM THE YARD HEADED FOR LOCATION
Arrive At Loc	09/21/2011 07:45							CREW ARRIVES AT LOCATION
Assessment Of Location Safety Meeting	09/21/2011 07:50							CREW HAS SITE ASSESSMENT SAFETY MEETING GOING OVER HAZARDS AND EQUIPMENT LAYOUT
Pre-Rig Up Safety Meeting	09/21/2011 08:00							CREW HAS PRE RIG UP SAFETY MEETING
Rig-Up Equipment	09/21/2011 08:05							CREW BEGINS RIGGING UP EQUIPMENT
Rig-Up Completed	09/21/2011 09:30							CREW IS RIGGED UP AND READY TO BEGIN
Comment	09/21/2011 09:31							TRUCK WITH MUD RECOVERY SPACER HAS NOT ARRIVED YET
Comment	09/21/2011 11:40							TRUCK WITH MUD RECOVERY SPACER ARRIVES
Pre-Job Safety Meeting	09/21/2011 11:45							CREW, RIG CREW AND COMPANY REPS HAVE PRE JOB SAFETY MEETING
Pressure Test	09/21/2011 11:49							PRESSURE TEST LINES TO 5500

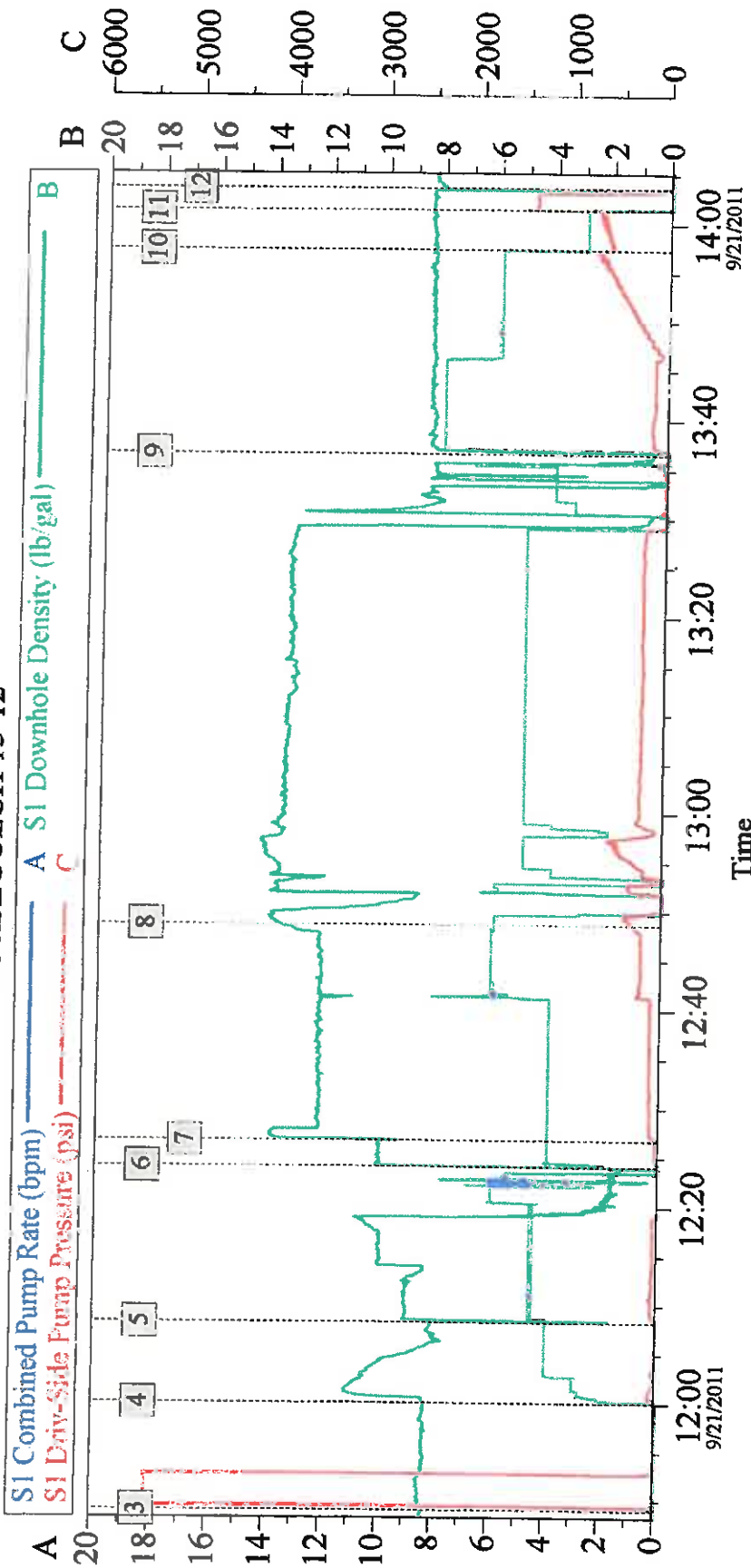
Cementing Job Log

Activity Description	Date/Time	Cht #	Rate bbl/min	Volume bbl		Pressure psig		Comments
				Stage	Total	Tubing	Casing	
Pump Spacer	09/21/2011 12:00		4	20	20		100.0	PUMP 10# TUNED SPACER
Pump Spacer	09/21/2011 12:08		5	70	90		125.0	PUMP 10# MUD RECOVERY SPACER
Pump Spacer	09/21/2011 12:24		4	10	100		80.0	PUMP 8.4# MUD FLUSH
Pump Lead Cement	09/21/2011 12:26		4	105	205		350.0	PUMP 260 SKS LEAD CEMENT 12.2# 2.22 YIELD 12.23 GAL
Pump Tail Cement	09/21/2011 12:48		5	164	369		250.0	PUMP 525 SKS TAIL CEMENT 13.5 # 1.73 YIELD 7.31 GAL
Shutdown	09/21/2011 13:28							SHUTDOWN
Drop Top Plug	09/21/2011 13:31							DROP TOP PLUG
Pump Displacement	09/21/2011 13:36		6	148	517		670.0	PUMP DISPLACEMENT KCL WATER
Comment	09/21/2011 13:37							GOOD RETURNS THROUGH THE JOB UNTIL 72 BBLS AWAY IN DISPLACEMENT, NEVER GOT RETURNS BACK
Bump Plug	09/21/2011 14:01							BUMP PLUG. FINAL CIRCULATING PSI 670.
Check Floats	09/21/2011 14:03							CHECK FLOATS. GOT 1 BBL BACK
Post-Job Safety Meeting (Pre Rig-Down)	09/21/2011 14:15							CREW HAS PRE RIG DOWN SAFETY MEETING
Rig-Down Equipment	09/21/2011 14:25							CREW BEGINS RIGGING DOWN EQUIPMENT
Rig-Up Completed	09/21/2011 16:00							CREW IS RIGGED DOWN AND READY TO DEPART
Pre-Convoy Safety Meeting	09/21/2011 16:15							CREW HAS JOURNEY MANAGEMENT SAFETY MEETING
Depart Location for Service Center or Other Site	09/21/2011 16:30							CREW DEPARTS LOCATION

QUICKSILVER 5.5" PRODUCTION

DHS 6

HORSEGULCH 13-12



Customer: QUICKSILVER	Job Date: 21-Sep-2011	Sales Order #: 8482916
Well Description: HORSEGULCH FEDERAL 13-12	UWI:	