

PROCEED IN A NORTHWESTERLY DIRECTION FROM PARACHUTE, COLORADO ALONG COUNTY ROAD 215 APPROXIMATELY 7.1 MILES TO THE JUNCTION OF THIS ROAD AND GARDEN GULCH ROAD TO THE NORTHWEST; TURN LEFT AND PROCEED IN A NORTHWESTERLY, THEN SOUTHWESTERLY THEN EASTERLY, THEN SOUTHERLY, THEN SOUTHWESTERLY DIRECTION APPROXIMATELY 8.4 MILES TO THE JUNCTION OF THIS ROAD AND AN EXISTING ROAD TO THE SOUTHEAST; TURN LEFT AND PROCEED IN A SOUTHEASTERLY, THEN SOUTHERLY DIRECTION APPROXIMATELY 2.7 MILES TO THE JUNCTION OF THIS ROAD AND AN EXISTING ROAD TO THE EAST, TURN LEFT AND PROCEED IN A NORTHEASTERLY DIRECTION APPROXIMATELY 0.3 MILES TO THE JUNCTION OF THIS ROAD AND THE BEGINNING OF THE PROPOSED ACCESS ROAD TO THE SOUTHEAST; FOLLOW ROAD FLAGS IN A SOUTHEASTERLY, THEN SOUTHERLY DIRECTION APPROXIMATELY 530' TO THE PROPOSED LOCATION.

TOTAL DISTANCE FROM PARACHUTE, COLORADO TO THE PROPOSED WELL LOCATION IS APPROXIMATELY 18.6 MILES.

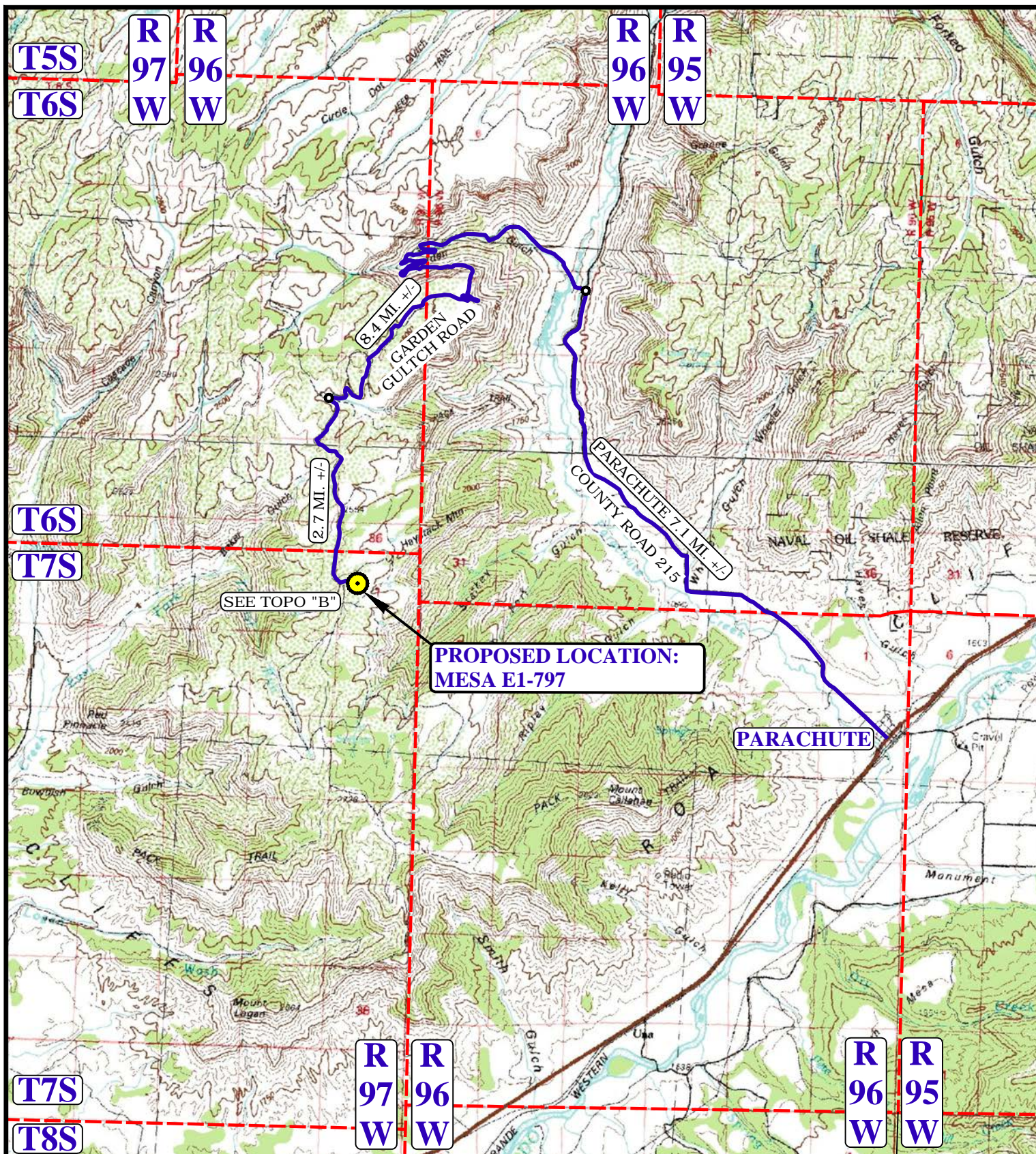
Caerus Oil & Gas LLC

MESA E1-797
TRACT 63, SECTION 1, T7S, R97W, 6th P.M.
S 1/2 NW 1/4



UELS, LLC
Corporate Office * 85 South 200 East
Vernal, UT 84078 * (435) 789-1017

DRAWN BY: C.M.F.	DATE DRAWN: 11-06-14
	REVISED: 00-00-00
ROAD DESCRIPTION	



LEGEND:

- PROPOSED LOCATION
- ACCESS ROAD



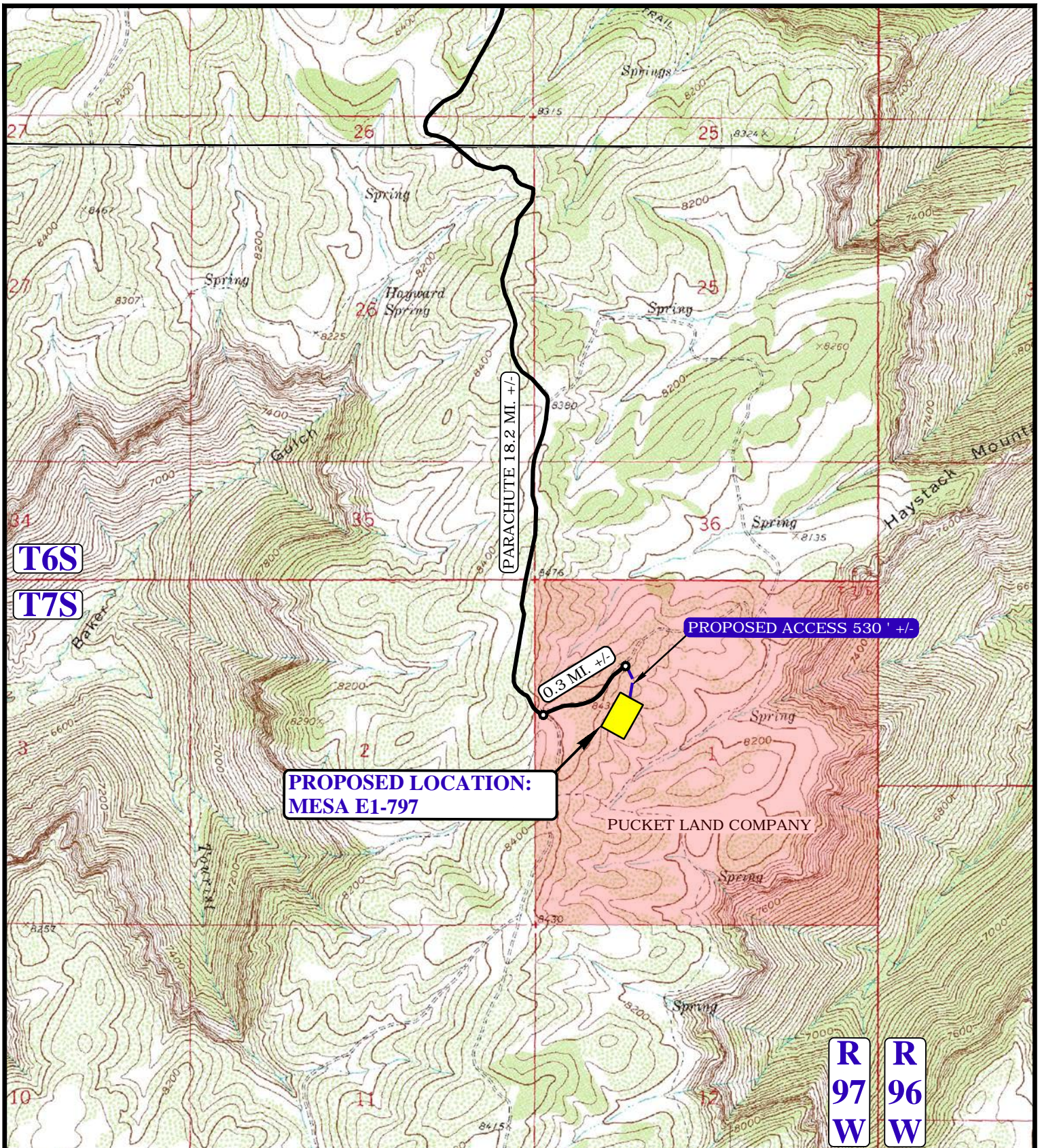
UELS, LLC
 Corporate Office * 85 South 200 East
 Vernal, UT 84078 * (435) 789-1017



Caerus Oil & Gas LLC

MESA E1-797
TRACT 63, SECTION 1, T7S, R97W, 6th P.M.
S 1/2 NW 1/4

DRAWN BY: C.M.F.	DATE DRAWN: 11-06-14
SCALE: 1:100,000	REVISED: 00-00-00
ACCESS ROAD MAP	TOPO A



LEGEND:

— EXISTING ROAD
 - - - PROPOSED ROAD

Caerus Oil & Gas LLC

MESA E1-797
TRACT 63, SECTION 1, T7S, R97W, 6th P.M.
S 1/2 NW 1/4

DRAWN BY: C.M.F.

DATE DRAWN: 09-18-14

SCALE: 1" = 2000'

REVISED: 11-06-14

ACCESS ROAD MAP

TOPO B



UELS, LLC
 Corporate Office * 85 South 200 East
 Vernal, UT 84078 * (435) 789-1017

