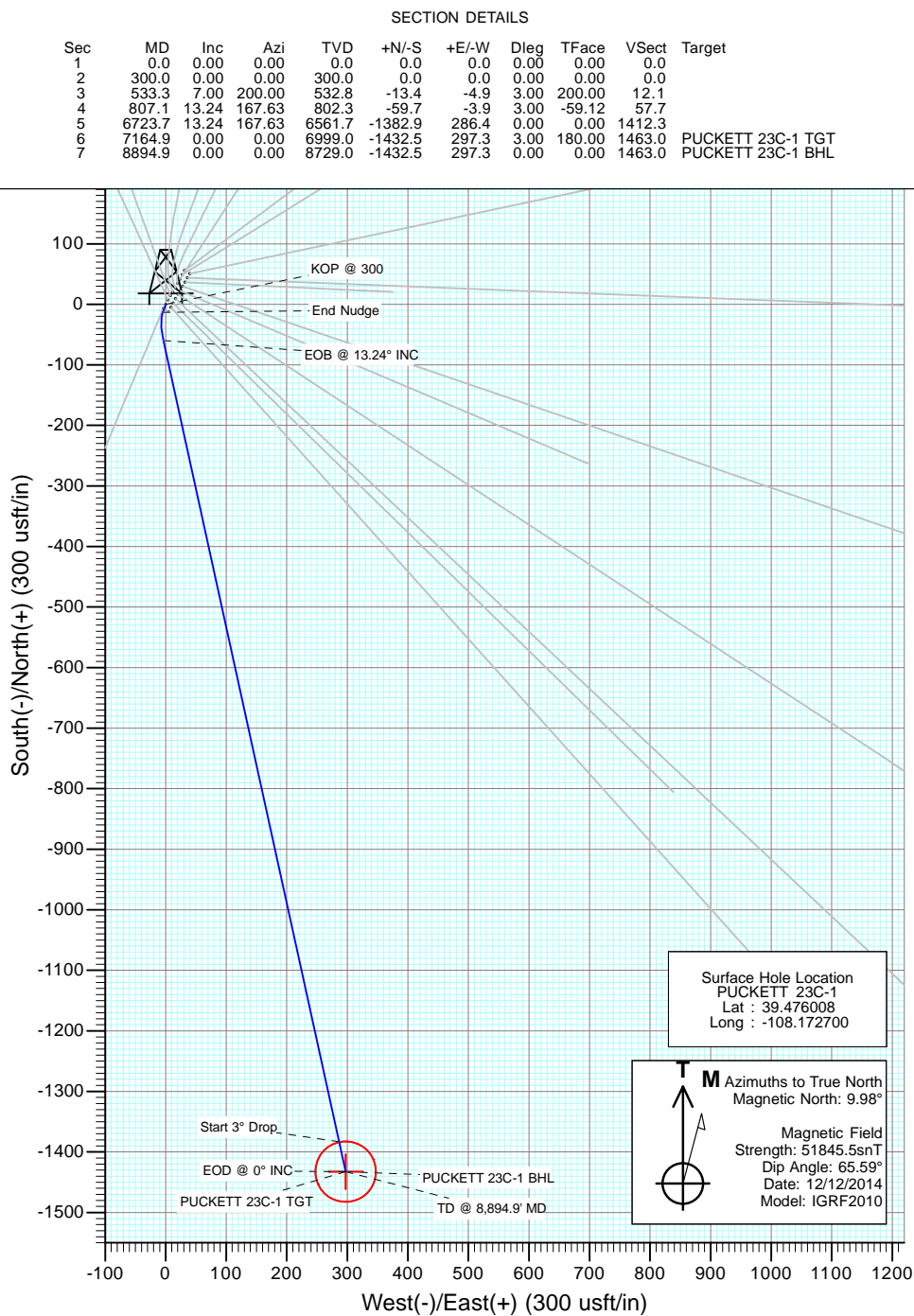
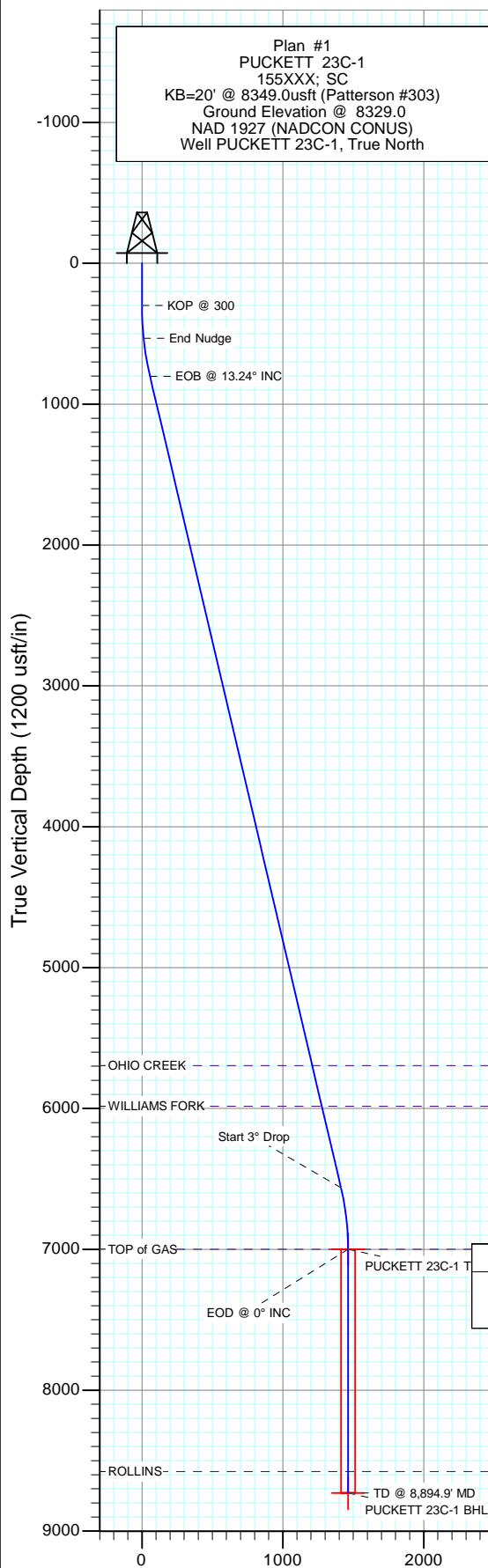
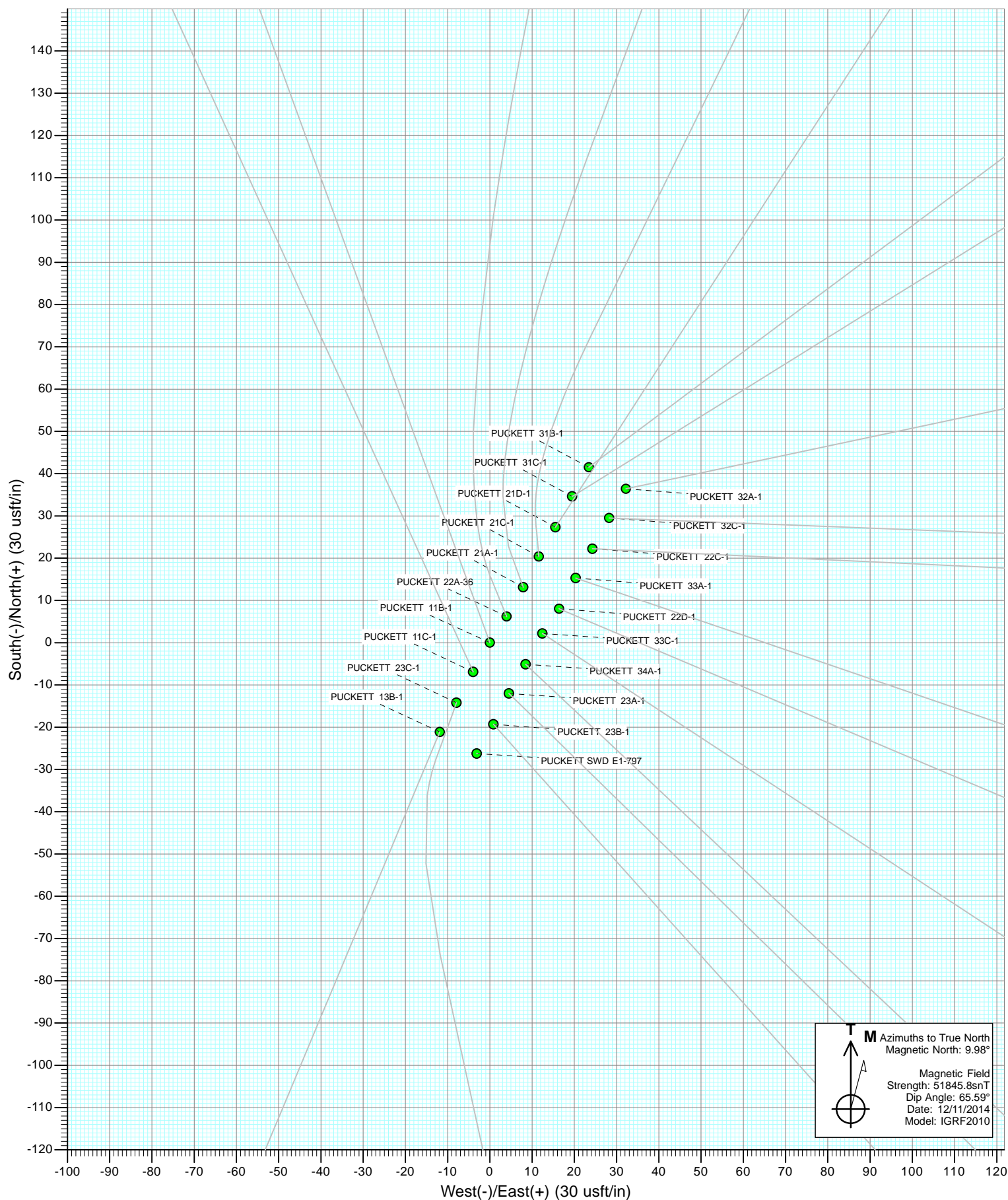


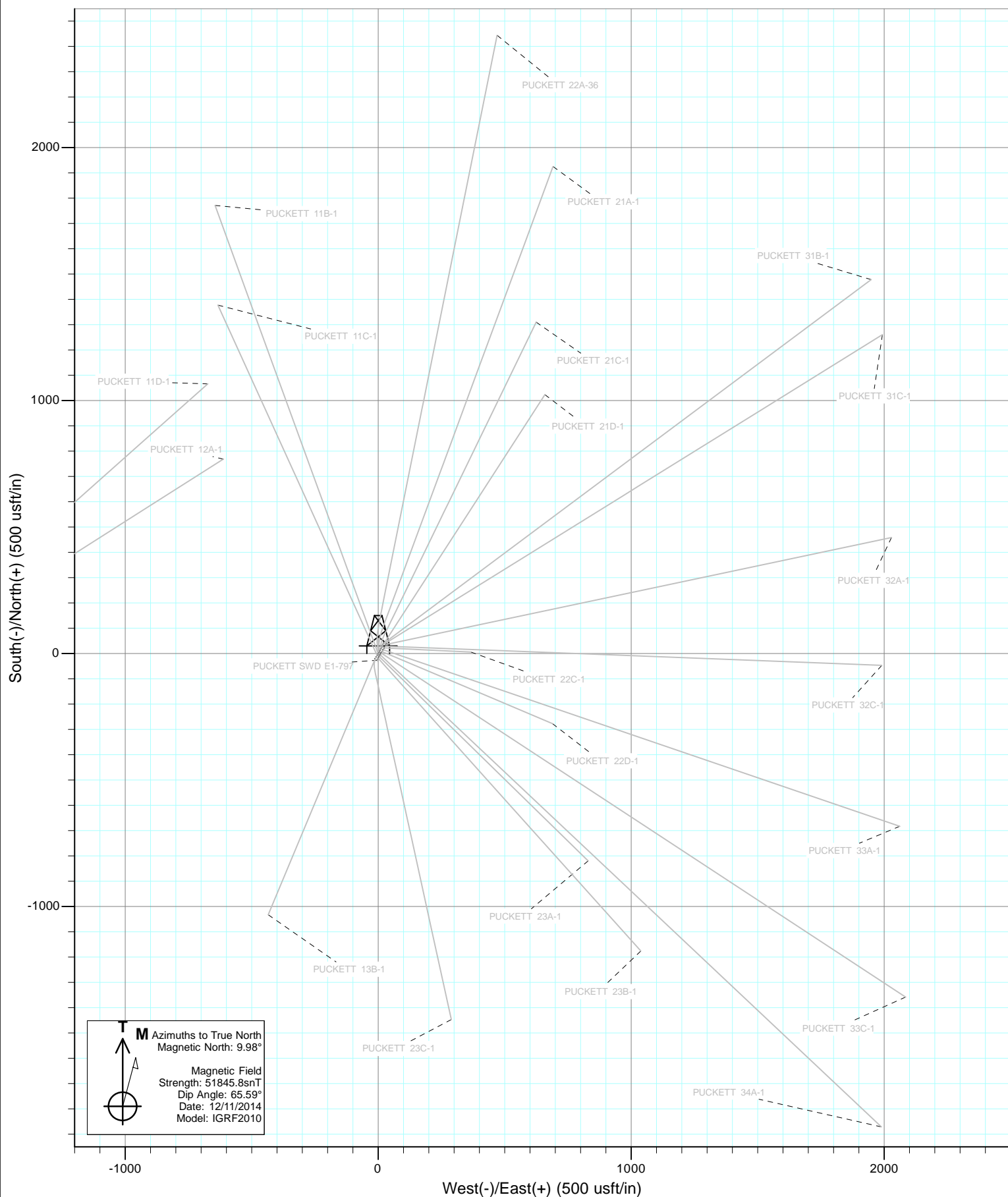


Project: Garfield County, CO
Site: S1-T7S-R97W (Mesa E1 797)
Well: PUCKETT 23C-1
Wellbore: DD
Design: Plan #1



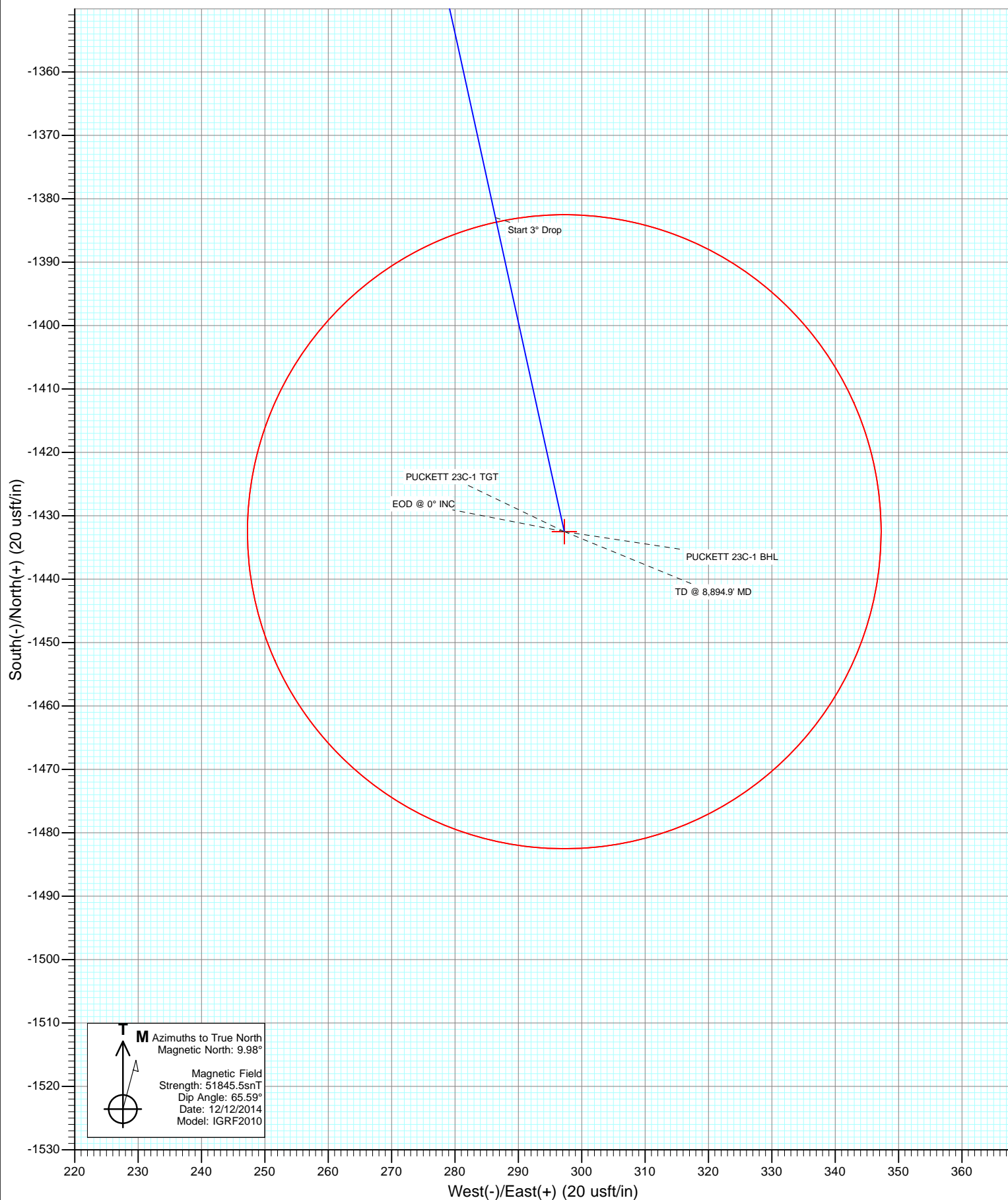
| DESIGN TARGET DETAILS | | | | | | |
|-----------------------|---------|-------|-----------|------------|-----------|-------------|
| Name | +N/-S | +E/-W | Northing | Easting | Latitude | Longitude |
| PUCKETT 23C-1 TGT | -1432.5 | 297.3 | 607909.66 | 1245892.83 | 39.472075 | -108.171647 |
| PUCKETT 23C-1 BHL | -1432.5 | 297.3 | 607909.66 | 1245892.83 | 39.472075 | -108.171647 |







Project: Garfield County, CO
Site: S1-T7S-R97W (Mesa E1 797)
Well: PUCKETT 23C-1
Wellbore: DD
Design: Plan #1



Cathedral Energy Services

Planning Report

| | | | |
|------------------|-----------------------------|-------------------------------------|--------------------------------------|
| Database: | USA EDM 5000 Multi Users DB | Local Co-ordinate Reference: | Well PUCKETT 23C-1 |
| Company: | Caerus Oil & Gas (NAD 27) | TVD Reference: | KB=20' @ 8349.0usft (Patterson #303) |
| Project: | Garfield County, CO | MD Reference: | KB=20' @ 8349.0usft (Patterson #303) |
| Site: | S1-T7S-R97W (Mesa E1 797) | North Reference: | True |
| Well: | PUCKETT 23C-1 | Survey Calculation Method: | Minimum Curvature |
| Wellbore: | DD | | |
| Design: | Plan #1 | | |

| | | | |
|--------------------|--------------------------------------|----------------------|----------------|
| Project | Garfield County, CO | | |
| Map System: | US State Plane 1927 (Exact solution) | System Datum: | Mean Sea Level |
| Geo Datum: | NAD 1927 (NADCON CONUS) | | |
| Map Zone: | Colorado Central 502 | | |

| | | | | | |
|-----------------------|----------|---------------------------|-------------------|-------------------|-------------|
| Site | | S1-T7S-R97W (Mesa E1 797) | | | |
| Site Position: | | Northing: | 609,370.34 usft | Latitude: | 39.476064 |
| From: | Lat/Long | Easting: | 1,245,650.28 usft | Longitude: | -108.172658 |
| Position Uncertainty: | 0.0 usft | Slot Radius: | 13-3/16" | Grid Convergence: | -1.69 ° |

| | | | | | | |
|----------------------|---------------|----------|---------------------|-------------------|---------------|--------------|
| Well | PUCKETT 23C-1 | | | | | |
| Well Position | +N/-S | 0.0 usft | Northing: | 609,350.29 usft | Latitude: | 39.476008 |
| | +E/-W | 0.0 usft | Easting: | 1,245,637.83 usft | Longitude: | -108.172700 |
| Position Uncertainty | | 0.0 usft | Wellhead Elevation: | 0.0 usft | Ground Level: | 8,329.0 usft |

| | | | | | |
|------------------|-------------------|--------------------|--------------------|------------------|-----------------------|
| Wellbore | DD | | | | |
| Magnetics | Model Name | Sample Date | Declination | Dip Angle | Field Strength |
| | | | (°) | (°) | (nT) |
| | IGRF2010 | 12/12/2014 | 9.98 | 65.59 | 51,846 |

| | | | | |
|--------------------------|-------------------------|--------------|----------------------|------------------|
| Design | Plan #1 | | | |
| Audit Notes: | | | | |
| Version: | Phase: | PLAN | Tie On Depth: | 0.0 |
| Vertical Section: | Depth From (TVD) | +N/-S | +E/-W | Direction |
| | (usft) | (usft) | (usft) | (°) |
| | 0.0 | 0.0 | 0.0 | 168.28 |

| Plan Sections | | | | | | | | | | |
|-----------------------|-----------------|-------------|-----------------------|--------------|--------------|-------------------------|------------------------|-----------------------|---------|-------------------|
| Measured Depth (usft) | Inclination (°) | Azimuth (°) | Vertical Depth (usft) | +N/-S (usft) | +E/-W (usft) | Dogleg Rate (°/100usft) | Build Rate (°/100usft) | Turn Rate (°/100usft) | TFO (°) | Target |
| 0.0 | 0.00 | 0.00 | 0.0 | 0.0 | 0.0 | 0.00 | 0.00 | 0.00 | 0.00 | |
| 300.0 | 0.00 | 0.00 | 300.0 | 0.0 | 0.0 | 0.00 | 0.00 | 0.00 | 0.00 | |
| 533.3 | 7.00 | 200.00 | 532.8 | -13.4 | -4.9 | 3.00 | 3.00 | 0.00 | 200.00 | |
| 807.1 | 13.24 | 167.63 | 802.3 | -59.7 | -3.9 | 3.00 | 2.28 | -11.83 | -59.12 | |
| 6,723.7 | 13.24 | 167.63 | 6,561.7 | -1,382.9 | 286.4 | 0.00 | 0.00 | 0.00 | 0.00 | |
| 7,164.9 | 0.00 | 0.00 | 6,999.0 | -1,432.5 | 297.3 | 3.00 | -3.00 | 0.00 | 180.00 | PUCKETT 23C-1 TG1 |
| 8,894.9 | 0.00 | 0.00 | 8,729.0 | -1,432.5 | 297.3 | 0.00 | 0.00 | 0.00 | 0.00 | PUCKETT 23C-1 BHL |

Cathedral Energy Services

Planning Report

| | | | |
|------------------|-----------------------------|-------------------------------------|--------------------------------------|
| Database: | USA EDM 5000 Multi Users DB | Local Co-ordinate Reference: | Well PUCKETT 23C-1 |
| Company: | Caerus Oil & Gas (NAD 27) | TVD Reference: | KB=20' @ 8349.0usft (Patterson #303) |
| Project: | Garfield County, CO | MD Reference: | KB=20' @ 8349.0usft (Patterson #303) |
| Site: | S1-T7S-R97W (Mesa E1 797) | North Reference: | True |
| Well: | PUCKETT 23C-1 | Survey Calculation Method: | Minimum Curvature |
| Wellbore: | DD | | |
| Design: | Plan #1 | | |

Planned Survey

| Measured Depth (usft) | Inclination (°) | Azimuth (°) | Vertical Depth (usft) | +N/-S (usft) | +E/-W (usft) | Vertical Section (usft) | Dogleg Rate (°/100usft) | Build Rate (°/100u) | Comments / Formations |
|-----------------------|-----------------|-------------|-----------------------|--------------|--------------|-------------------------|-------------------------|---------------------|-----------------------|
| 0.0 | 0.00 | 0.00 | 0.0 | 0.0 | 0.0 | 0.0 | 0.00 | 0.00 | |
| 100.0 | 0.00 | 0.00 | 100.0 | 0.0 | 0.0 | 0.0 | 0.00 | 0.00 | |
| 200.0 | 0.00 | 0.00 | 200.0 | 0.0 | 0.0 | 0.0 | 0.00 | 0.00 | |
| 300.0 | 0.00 | 0.00 | 300.0 | 0.0 | 0.0 | 0.0 | 0.00 | 0.00 | KOP @ 300 |
| 400.0 | 3.00 | 200.00 | 400.0 | -2.5 | -0.9 | 2.2 | 3.00 | 3.00 | |
| 500.0 | 6.00 | 200.00 | 499.6 | -9.8 | -3.6 | 8.9 | 3.00 | 3.00 | |
| 533.3 | 7.00 | 200.00 | 532.8 | -13.4 | -4.9 | 12.1 | 3.00 | 3.00 | End Nudge |
| 600.0 | 8.21 | 187.89 | 598.8 | -21.9 | -6.9 | 20.0 | 3.00 | 1.81 | |
| 700.0 | 10.48 | 175.72 | 697.5 | -38.1 | -7.2 | 35.8 | 3.00 | 2.27 | |
| 807.1 | 13.24 | 167.63 | 802.3 | -59.7 | -3.9 | 57.7 | 3.00 | 2.57 | EOB @ 13.24° INC |
| 900.0 | 13.24 | 167.63 | 892.8 | -80.5 | 0.7 | 79.0 | 0.00 | 0.00 | |
| 1,000.0 | 13.24 | 167.63 | 990.1 | -102.9 | 5.6 | 101.9 | 0.00 | 0.00 | |
| 1,100.0 | 13.24 | 167.63 | 1,087.4 | -125.3 | 10.5 | 124.8 | 0.00 | 0.00 | |
| 1,200.0 | 13.24 | 167.63 | 1,184.8 | -147.6 | 15.4 | 147.7 | 0.00 | 0.00 | |
| 1,300.0 | 13.24 | 167.63 | 1,282.1 | -170.0 | 20.3 | 170.6 | 0.00 | 0.00 | |
| 1,400.0 | 13.24 | 167.63 | 1,379.5 | -192.3 | 25.2 | 193.5 | 0.00 | 0.00 | |
| 1,500.0 | 13.24 | 167.63 | 1,476.8 | -214.7 | 30.1 | 216.4 | 0.00 | 0.00 | |
| 1,600.0 | 13.24 | 167.63 | 1,574.2 | -237.1 | 35.0 | 239.2 | 0.00 | 0.00 | |
| 1,700.0 | 13.24 | 167.63 | 1,671.5 | -259.4 | 39.9 | 262.1 | 0.00 | 0.00 | |
| 1,800.0 | 13.24 | 167.63 | 1,768.8 | -281.8 | 44.9 | 285.0 | 0.00 | 0.00 | |
| 1,900.0 | 13.24 | 167.63 | 1,866.2 | -304.2 | 49.8 | 307.9 | 0.00 | 0.00 | |
| 2,000.0 | 13.24 | 167.63 | 1,963.5 | -326.5 | 54.7 | 330.8 | 0.00 | 0.00 | |
| 2,100.0 | 13.24 | 167.63 | 2,060.9 | -348.9 | 59.6 | 353.7 | 0.00 | 0.00 | |
| 2,200.0 | 13.24 | 167.63 | 2,158.2 | -371.3 | 64.5 | 376.6 | 0.00 | 0.00 | |
| 2,300.0 | 13.24 | 167.63 | 2,255.6 | -393.6 | 69.4 | 399.5 | 0.00 | 0.00 | |
| 2,400.0 | 13.24 | 167.63 | 2,352.9 | -416.0 | 74.3 | 422.4 | 0.00 | 0.00 | |
| 2,500.0 | 13.24 | 167.63 | 2,450.3 | -438.4 | 79.2 | 445.3 | 0.00 | 0.00 | |
| 2,600.0 | 13.24 | 167.63 | 2,547.6 | -460.7 | 84.1 | 468.2 | 0.00 | 0.00 | |
| 2,700.0 | 13.24 | 167.63 | 2,644.9 | -483.1 | 89.0 | 491.1 | 0.00 | 0.00 | |
| 2,800.0 | 13.24 | 167.63 | 2,742.3 | -505.4 | 93.9 | 514.0 | 0.00 | 0.00 | |
| 2,900.0 | 13.24 | 167.63 | 2,839.6 | -527.8 | 98.8 | 536.9 | 0.00 | 0.00 | |
| 3,000.0 | 13.24 | 167.63 | 2,937.0 | -550.2 | 103.7 | 559.8 | 0.00 | 0.00 | |
| 3,100.0 | 13.24 | 167.63 | 3,034.3 | -572.5 | 108.6 | 582.7 | 0.00 | 0.00 | |
| 3,200.0 | 13.24 | 167.63 | 3,131.7 | -594.9 | 113.5 | 605.6 | 0.00 | 0.00 | |
| 3,300.0 | 13.24 | 167.63 | 3,229.0 | -617.3 | 118.4 | 628.5 | 0.00 | 0.00 | |
| 3,400.0 | 13.24 | 167.63 | 3,326.3 | -639.6 | 123.3 | 651.3 | 0.00 | 0.00 | |
| 3,500.0 | 13.24 | 167.63 | 3,423.7 | -662.0 | 128.3 | 674.2 | 0.00 | 0.00 | |
| 3,600.0 | 13.24 | 167.63 | 3,521.0 | -684.4 | 133.2 | 697.1 | 0.00 | 0.00 | |
| 3,700.0 | 13.24 | 167.63 | 3,618.4 | -706.7 | 138.1 | 720.0 | 0.00 | 0.00 | |
| 3,800.0 | 13.24 | 167.63 | 3,715.7 | -729.1 | 143.0 | 742.9 | 0.00 | 0.00 | |
| 3,900.0 | 13.24 | 167.63 | 3,813.1 | -751.5 | 147.9 | 765.8 | 0.00 | 0.00 | |
| 4,000.0 | 13.24 | 167.63 | 3,910.4 | -773.8 | 152.8 | 788.7 | 0.00 | 0.00 | |
| 4,100.0 | 13.24 | 167.63 | 4,007.8 | -796.2 | 157.7 | 811.6 | 0.00 | 0.00 | |
| 4,200.0 | 13.24 | 167.63 | 4,105.1 | -818.5 | 162.6 | 834.5 | 0.00 | 0.00 | |
| 4,300.0 | 13.24 | 167.63 | 4,202.4 | -840.9 | 167.5 | 857.4 | 0.00 | 0.00 | |
| 4,400.0 | 13.24 | 167.63 | 4,299.8 | -863.3 | 172.4 | 880.3 | 0.00 | 0.00 | |
| 4,500.0 | 13.24 | 167.63 | 4,397.1 | -885.6 | 177.3 | 903.2 | 0.00 | 0.00 | |
| 4,600.0 | 13.24 | 167.63 | 4,494.5 | -908.0 | 182.2 | 926.1 | 0.00 | 0.00 | |
| 4,700.0 | 13.24 | 167.63 | 4,591.8 | -930.4 | 187.1 | 949.0 | 0.00 | 0.00 | |
| 4,800.0 | 13.24 | 167.63 | 4,689.2 | -952.7 | 192.0 | 971.9 | 0.00 | 0.00 | |
| 4,900.0 | 13.24 | 167.63 | 4,786.5 | -975.1 | 196.9 | 994.8 | 0.00 | 0.00 | |
| 5,000.0 | 13.24 | 167.63 | 4,883.8 | -997.5 | 201.8 | 1,017.7 | 0.00 | 0.00 | |

Cathedral Energy Services

Planning Report

| | | | |
|------------------|-----------------------------|-------------------------------------|--------------------------------------|
| Database: | USA EDM 5000 Multi Users DB | Local Co-ordinate Reference: | Well PUCKETT 23C-1 |
| Company: | Caerus Oil & Gas (NAD 27) | TVD Reference: | KB=20' @ 8349.0usft (Patterson #303) |
| Project: | Garfield County, CO | MD Reference: | KB=20' @ 8349.0usft (Patterson #303) |
| Site: | S1-T7S-R97W (Mesa E1 797) | North Reference: | True |
| Well: | PUCKETT 23C-1 | Survey Calculation Method: | Minimum Curvature |
| Wellbore: | DD | | |
| Design: | Plan #1 | | |

| Planned Survey | | | | | | | | | |
|-----------------------|-----------------|-------------|-----------------------|--------------|--------------|-------------------------|-------------------------|---------------------|---------------------------|
| Measured Depth (usft) | Inclination (°) | Azimuth (°) | Vertical Depth (usft) | +N/-S (usft) | +E/-W (usft) | Vertical Section (usft) | Dogleg Rate (°/100usft) | Build Rate (°/100u) | Comments / Formations |
| 5,100.0 | 13.24 | 167.63 | 4,981.2 | -1,019.8 | 206.7 | 1,040.6 | 0.00 | 0.00 | |
| 5,200.0 | 13.24 | 167.63 | 5,078.5 | -1,042.2 | 211.6 | 1,063.5 | 0.00 | 0.00 | |
| 5,300.0 | 13.24 | 167.63 | 5,175.9 | -1,064.6 | 216.6 | 1,086.3 | 0.00 | 0.00 | |
| 5,400.0 | 13.24 | 167.63 | 5,273.2 | -1,086.9 | 221.5 | 1,109.2 | 0.00 | 0.00 | |
| 5,500.0 | 13.24 | 167.63 | 5,370.6 | -1,109.3 | 226.4 | 1,132.1 | 0.00 | 0.00 | |
| 5,600.0 | 13.24 | 167.63 | 5,467.9 | -1,131.6 | 231.3 | 1,155.0 | 0.00 | 0.00 | |
| 5,700.0 | 13.24 | 167.63 | 5,565.2 | -1,154.0 | 236.2 | 1,177.9 | 0.00 | 0.00 | |
| 5,800.0 | 13.24 | 167.63 | 5,662.6 | -1,176.4 | 241.1 | 1,200.8 | 0.00 | 0.00 | |
| 5,832.3 | 13.24 | 167.63 | 5,694.0 | -1,183.6 | 242.7 | 1,208.2 | 0.00 | 0.00 | OHIO CREEK |
| 5,900.0 | 13.24 | 167.63 | 5,759.9 | -1,198.7 | 246.0 | 1,223.7 | 0.00 | 0.00 | |
| 6,000.0 | 13.24 | 167.63 | 5,857.3 | -1,221.1 | 250.9 | 1,246.6 | 0.00 | 0.00 | |
| 6,100.0 | 13.24 | 167.63 | 5,954.6 | -1,243.5 | 255.8 | 1,269.5 | 0.00 | 0.00 | |
| 6,130.2 | 13.24 | 167.63 | 5,984.0 | -1,250.2 | 257.3 | 1,276.4 | 0.00 | 0.00 | WILLIAMS FORK |
| 6,200.0 | 13.24 | 167.63 | 6,052.0 | -1,265.8 | 260.7 | 1,292.4 | 0.00 | 0.00 | |
| 6,300.0 | 13.24 | 167.63 | 6,149.3 | -1,288.2 | 265.6 | 1,315.3 | 0.00 | 0.00 | |
| 6,400.0 | 13.24 | 167.63 | 6,246.7 | -1,310.6 | 270.5 | 1,338.2 | 0.00 | 0.00 | |
| 6,500.0 | 13.24 | 167.63 | 6,344.0 | -1,332.9 | 275.4 | 1,361.1 | 0.00 | 0.00 | |
| 6,600.0 | 13.24 | 167.63 | 6,441.3 | -1,355.3 | 280.3 | 1,384.0 | 0.00 | 0.00 | |
| 6,700.0 | 13.24 | 167.63 | 6,538.7 | -1,377.7 | 285.2 | 1,406.9 | 0.00 | 0.00 | |
| 6,723.7 | 13.24 | 167.63 | 6,561.7 | -1,382.9 | 286.4 | 1,412.3 | 0.00 | 0.00 | Start 3° Drop |
| 6,800.0 | 10.95 | 167.63 | 6,636.4 | -1,398.6 | 289.8 | 1,428.3 | 3.00 | -3.00 | |
| 6,900.0 | 7.95 | 167.63 | 6,735.0 | -1,414.6 | 293.3 | 1,444.7 | 3.00 | -3.00 | |
| 7,000.0 | 4.95 | 167.63 | 6,834.3 | -1,425.6 | 295.7 | 1,455.9 | 3.00 | -3.00 | |
| 7,100.0 | 1.95 | 167.63 | 6,934.2 | -1,431.4 | 297.0 | 1,461.9 | 3.00 | -3.00 | |
| 7,164.9 | 0.00 | 0.00 | 6,999.0 | -1,432.5 | 297.3 | 1,463.0 | 3.00 | -3.00 | EOD @ 0° INC - TOP of GAS |
| 7,200.0 | 0.00 | 0.00 | 7,034.1 | -1,432.5 | 297.3 | 1,463.0 | 0.00 | 0.00 | |
| 7,300.0 | 0.00 | 0.00 | 7,134.1 | -1,432.5 | 297.3 | 1,463.0 | 0.00 | 0.00 | |
| 7,400.0 | 0.00 | 0.00 | 7,234.1 | -1,432.5 | 297.3 | 1,463.0 | 0.00 | 0.00 | |
| 7,500.0 | 0.00 | 0.00 | 7,334.1 | -1,432.5 | 297.3 | 1,463.0 | 0.00 | 0.00 | |
| 7,600.0 | 0.00 | 0.00 | 7,434.1 | -1,432.5 | 297.3 | 1,463.0 | 0.00 | 0.00 | |
| 7,700.0 | 0.00 | 0.00 | 7,534.1 | -1,432.5 | 297.3 | 1,463.0 | 0.00 | 0.00 | |
| 7,800.0 | 0.00 | 0.00 | 7,634.1 | -1,432.5 | 297.3 | 1,463.0 | 0.00 | 0.00 | |
| 7,900.0 | 0.00 | 0.00 | 7,734.1 | -1,432.5 | 297.3 | 1,463.0 | 0.00 | 0.00 | |
| 8,000.0 | 0.00 | 0.00 | 7,834.1 | -1,432.5 | 297.3 | 1,463.0 | 0.00 | 0.00 | |
| 8,100.0 | 0.00 | 0.00 | 7,934.1 | -1,432.5 | 297.3 | 1,463.0 | 0.00 | 0.00 | |
| 8,200.0 | 0.00 | 0.00 | 8,034.1 | -1,432.5 | 297.3 | 1,463.0 | 0.00 | 0.00 | |
| 8,300.0 | 0.00 | 0.00 | 8,134.1 | -1,432.5 | 297.3 | 1,463.0 | 0.00 | 0.00 | |
| 8,400.0 | 0.00 | 0.00 | 8,234.1 | -1,432.5 | 297.3 | 1,463.0 | 0.00 | 0.00 | |
| 8,500.0 | 0.00 | 0.00 | 8,334.1 | -1,432.5 | 297.3 | 1,463.0 | 0.00 | 0.00 | |
| 8,600.0 | 0.00 | 0.00 | 8,434.1 | -1,432.5 | 297.3 | 1,463.0 | 0.00 | 0.00 | |
| 8,700.0 | 0.00 | 0.00 | 8,534.1 | -1,432.5 | 297.3 | 1,463.0 | 0.00 | 0.00 | |
| 8,742.9 | 0.00 | 0.00 | 8,577.0 | -1,432.5 | 297.3 | 1,463.0 | 0.00 | 0.00 | ROLLINS |
| 8,800.0 | 0.00 | 0.00 | 8,634.1 | -1,432.5 | 297.3 | 1,463.0 | 0.00 | 0.00 | |
| 8,894.9 | 0.00 | 0.00 | 8,729.0 | -1,432.5 | 297.3 | 1,463.0 | 0.00 | 0.00 | TD @ 8,894.9' MD |

Cathedral Energy Services

Planning Report

| | | | |
|------------------|-----------------------------|-------------------------------------|--------------------------------------|
| Database: | USA EDM 5000 Multi Users DB | Local Co-ordinate Reference: | Well PUCKETT 23C-1 |
| Company: | Caerus Oil & Gas (NAD 27) | TVD Reference: | KB=20' @ 8349.0usft (Patterson #303) |
| Project: | Garfield County, CO | MD Reference: | KB=20' @ 8349.0usft (Patterson #303) |
| Site: | S1-T7S-R97W (Mesa E1 797) | North Reference: | True |
| Well: | PUCKETT 23C-1 | Survey Calculation Method: | Minimum Curvature |
| Wellbore: | DD | | |
| Design: | Plan #1 | | |

| Targets | | | | | | | | | |
|---------------------------|-----------|----------|---------|----------|--------|------------|--------------|-----------|-------------|
| Target Name | | | | | | | | | |
| - hit/miss target | Dip Angle | Dip Dir. | TVD | +N/-S | +E/-W | Northing | Easting | Latitude | Longitude |
| - Shape | (°) | (°) | (usft) | (usft) | (usft) | (usft) | (usft) | | |
| PUCKETT 23C-1 BHL | 0.00 | 0.00 | 8,729.0 | -1,432.5 | 297.3 | 607,909.66 | 1,245,892.83 | 39.472075 | -108.171647 |
| - plan hits target center | | | | | | | | | |
| - Circle (radius 50.0) | | | | | | | | | |
| PUCKETT 23C-1 TGT | 0.00 | 0.00 | 6,999.0 | -1,432.5 | 297.3 | 607,909.66 | 1,245,892.83 | 39.472075 | -108.171647 |
| - plan hits target center | | | | | | | | | |
| - Point | | | | | | | | | |

| Formations | | | | | | |
|----------------|----------------|---------------|-----------|-----|---------------|--|
| Measured Depth | Vertical Depth | Name | Lithology | Dip | Dip Direction | |
| (usft) | (usft) | | | (°) | (°) | |
| 5,832.3 | 5,694.0 | OHIO CREEK | | | | |
| 6,130.2 | 5,984.0 | WILLIAMS FORK | | | | |
| 7,164.9 | 6,999.0 | TOP of GAS | | | | |
| 8,742.9 | 8,577.0 | ROLLINS | | | | |

| Plan Annotations | | | | |
|------------------|----------------|-------------------|--------------|------------------|
| Measured Depth | Vertical Depth | Local Coordinates | | Comment |
| (usft) | (usft) | +N/-S (usft) | +E/-W (usft) | |
| 300.0 | 300.0 | 0.0 | 0.0 | KOP @ 300 |
| 533.3 | 532.8 | -13.4 | -4.9 | End Nudge |
| 807.1 | 802.3 | -59.7 | -3.9 | EOB @ 13.24° INC |
| 6,723.7 | 6,561.7 | -1,382.9 | 286.4 | Start 3° Drop |
| 7,164.9 | 6,999.0 | -1,432.5 | 297.3 | EOD @ 0° INC |
| 8,894.9 | 8,729.0 | -1,432.5 | 297.3 | TD @ 8,894.9' MD |

Caerus Oil & Gas (NAD 27)

Garfield County, CO

S1-T7S-R97W (Mesa E1 797)

PUCKETT 23C-1

DD

Plan #1

Anticollision Report

16 December, 2014

Cathedral Energy Services

Anticollision Report

| | | | |
|---------------------------|---------------------------|-------------------------------------|--------------------------------------|
| Company: | Caerus Oil & Gas (NAD 27) | Local Co-ordinate Reference: | Well PUCKETT 23C-1 |
| Project: | Garfield County, CO | TVD Reference: | KB=20' @ 8349.0usft (Patterson #303) |
| Reference Site: | S1-T7S-R97W (Mesa E1 797) | MD Reference: | KB=20' @ 8349.0usft (Patterson #303) |
| Site Error: | 0.0usft | North Reference: | True |
| Reference Well: | PUCKETT 23C-1 | Survey Calculation Method: | Minimum Curvature |
| Well Error: | 0.0usft | Output errors are at | 2.00 sigma |
| Reference Wellbore | DD | Database: | USA EDM 5000 Multi Users DB |
| Reference Design: | Plan #1 | Offset TVD Reference: | Offset Datum |

| | | | |
|-------------------------------------|---|-----------------------|---------------------|
| Reference | Plan #1 | | |
| Filter type: | NO GLOBAL FILTER: Using user defined selection & filtering criteria | | |
| Interpolation Method: | MD Interval 100.0usft | Error Model: | ISCWSA |
| Depth Range: | Unlimited | Scan Method: | Closest Approach 3D |
| Results Limited by: | Maximum center-center distance of 200.0usft | Error Surface: | Elliptical Conic |
| Warning Levels Evaluated at: | 2.00 Sigma | | |

| | | | | |
|----------------------------|------------------|--------------------------|------------------|--------------------|
| Survey Tool Program | Date | 12/12/2014 | | |
| From (usft) | To (usft) | Survey (Wellbore) | Tool Name | Description |
| 0.0 | 8,894.9 | Plan #1 (DD) | ISCWSA MWD | MWD - Standard |

Cathedral Energy Services

Anticollision Report

| | | | |
|---------------------------|---------------------------|-------------------------------------|--------------------------------------|
| Company: | Caerus Oil & Gas (NAD 27) | Local Co-ordinate Reference: | Well PUCKETT 23C-1 |
| Project: | Garfield County, CO | TVD Reference: | KB=20' @ 8349.0usft (Patterson #303) |
| Reference Site: | S1-T7S-R97W (Mesa E1 797) | MD Reference: | KB=20' @ 8349.0usft (Patterson #303) |
| Site Error: | 0.0usft | North Reference: | True |
| Reference Well: | PUCKETT 23C-1 | Survey Calculation Method: | Minimum Curvature |
| Well Error: | 0.0usft | Output errors are at | 2.00 sigma |
| Reference Wellbore | DD | Database: | USA EDM 5000 Multi Users DB |
| Reference Design: | Plan #1 | Offset TVD Reference: | Offset Datum |

Summary

| Site Name | Reference Measured Depth (usft) | Offset Measured Depth (usft) | Distance Between Centres (usft) | Distance Between Ellipses (usft) | Separation Factor | Warning |
|-----------------------------------|--|---------------------------------------|--|---|----------------------|--------------|
| S1-T7S-R97W (Mesa E1 797) | | | | | | |
| PUCKETT 11B-1 - DD - Plan #1 | 200.0 | 200.0 | 16.3 | 15.6 | 25.836 | CC, ES |
| PUCKETT 11B-1 - DD - Plan #1 | 400.0 | 397.9 | 26.9 | 25.3 | 16.589 | SF |
| PUCKETT 11C-1 - DD - Plan #1 | 300.0 | 300.0 | 8.3 | 7.2 | 7.685 | CC, ES |
| PUCKETT 11C-1 - DD - Plan #1 | 400.0 | 399.6 | 11.9 | 10.3 | 7.528 | SF |
| PUCKETT 13B-1 - DD - Plan #1 | 200.0 | 200.0 | 8.0 | 7.3 | 12.657 | CC, ES |
| PUCKETT 13B-1 - DD - Plan #1 | 300.0 | 299.5 | 10.6 | 9.5 | 9.943 | SF |
| PUCKETT 21A-1 - HZ - Plan #1 | 300.0 | 300.0 | 31.6 | 30.5 | 29.258 | CC, ES |
| PUCKETT 21A-1 - HZ - Plan #1 | 500.0 | 496.0 | 49.4 | 47.2 | 22.721 | SF |
| PUCKETT 21C-1 - DD - Plan #1 | 300.0 | 300.0 | 39.7 | 38.6 | 36.808 | CC, ES |
| PUCKETT 21C-1 - DD - Plan #1 | 500.0 | 496.1 | 55.0 | 52.8 | 25.656 | SF |
| PUCKETT 21D-1 - DD - Plan #1 | 300.0 | 300.0 | 47.7 | 46.6 | 44.195 | CC, ES |
| PUCKETT 21D-1 - DD - Plan #1 | 500.0 | 496.6 | 60.5 | 58.4 | 28.513 | SF |
| PUCKETT 22A-36 - DD - Plan #1 | 255.6 | 255.6 | 23.6 | 22.7 | 26.840 | CC |
| PUCKETT 22A-36 - DD - Plan #1 | 300.0 | 299.8 | 23.7 | 22.6 | 21.975 | ES |
| PUCKETT 22A-36 - DD - Plan #1 | 400.0 | 398.7 | 28.9 | 27.3 | 18.236 | SF |
| PUCKETT 22C-1 - DD - Plan #1 | 300.0 | 300.0 | 48.6 | 47.5 | 45.053 | CC, ES |
| PUCKETT 22C-1 - DD - Plan #1 | 600.0 | 598.8 | 70.2 | 67.6 | 27.021 | SF |
| PUCKETT 22D-1 - DD - Plan #1 | 300.0 | 300.0 | 32.9 | 31.8 | 30.506 | CC, ES |
| PUCKETT 22D-1 - DD - Plan #1 | 500.0 | 499.6 | 42.5 | 40.4 | 20.265 | SF |
| PUCKETT 23A-1 - DD - Plan #1 | 300.0 | 300.0 | 12.6 | 11.5 | 11.690 | CC, ES |
| PUCKETT 23A-1 - DD - Plan #1 | 400.0 | 400.0 | 14.1 | 12.6 | 9.211 | SF |
| PUCKETT 23B-1 - DD - Plan #1 | 382.9 | 382.9 | 10.0 | 8.5 | 6.963 | CC |
| PUCKETT 23B-1 - DD - Plan #1 | 400.0 | 400.0 | 10.0 | 8.5 | 6.647 | ES, SF |
| PUCKETT 31B-1 - DD - Plan #1 | 200.0 | 200.0 | 63.9 | 63.3 | 101.586 | CC, ES |
| PUCKETT 31B-1 - DD - Plan #1 | 500.0 | 487.3 | 95.2 | 93.0 | 43.170 | SF |
| PUCKETT 31C-1 - DD - Plan #1 | 233.4 | 233.4 | 56.0 | 55.2 | 71.784 | CC, ES |
| PUCKETT 31C-1 - DD - Plan #1 | 500.0 | 491.1 | 80.3 | 78.2 | 36.993 | SF |
| PUCKETT 32A-1 - DD - Plan #1 | 200.0 | 200.0 | 64.6 | 63.9 | 102.596 | CC, ES |
| PUCKETT 32A-1 - DD - Plan #1 | 500.0 | 490.2 | 89.6 | 87.5 | 41.525 | SF |
| PUCKETT 32C-1 - DD - Plan #1 | 300.0 | 300.0 | 56.7 | 55.6 | 52.563 | CC, ES |
| PUCKETT 32C-1 - DD - Plan #1 | 500.0 | 495.1 | 72.9 | 70.8 | 34.592 | SF |
| PUCKETT 33A-1 - DD - Plan #1 | 300.0 | 300.0 | 40.8 | 39.8 | 37.847 | CC, ES |
| PUCKETT 33A-1 - DD - Plan #1 | 500.0 | 497.6 | 53.8 | 51.7 | 25.908 | SF |
| PUCKETT 33C-1 - DD - Plan #1 | 235.5 | 235.5 | 26.1 | 25.3 | 33.094 | CC |
| PUCKETT 33C-1 - DD - Plan #1 | 300.0 | 299.8 | 26.3 | 25.2 | 24.632 | ES |
| PUCKETT 33C-1 - DD - Plan #1 | 400.0 | 399.1 | 30.4 | 28.9 | 19.927 | SF |
| PUCKETT 34A-1 - DD - Plan #1 | 300.0 | 300.0 | 18.7 | 17.7 | 17.363 | CC, ES |
| PUCKETT 34A-1 - DD - Plan #1 | 400.0 | 400.0 | 20.8 | 19.2 | 13.426 | SF |
| PUCKETT SWD E1-797 - VH - Plan #1 | 492.1 | 491.8 | 8.6 | 6.7 | 4.529 | CC, ES |
| PUCKETT SWD E1-797 - VH - Plan #1 | 500.0 | 499.6 | 8.7 | 6.7 | 4.464 | SF |
| S2-T7S-R97W (Puckett Pad H2) | | | | | | |
| PUCKETT 13C-1 - DD - Plan #1 | | | | | | Out of range |
| S2-T7S-R97W (Puckett Pad P2) | | | | | | |
| PUCKETT 13D-1 - DD - Plan #1 | | | | | | Out of range |
| PUCKETT 14A-1 - DD - Plan #1 | | | | | | Out of range |
| PUCKETT 24A-1 - DD - Plan #1 | | | | | | Out of range |

Cathedral Energy Services

Anticollision Report

| | | | |
|---------------------------|---------------------------|-------------------------------------|--------------------------------------|
| Company: | Caerus Oil & Gas (NAD 27) | Local Co-ordinate Reference: | Well PUCKETT 23C-1 |
| Project: | Garfield County, CO | TVD Reference: | KB=20' @ 8349.0usft (Patterson #303) |
| Reference Site: | S1-T7S-R97W (Mesa E1 797) | MD Reference: | KB=20' @ 8349.0usft (Patterson #303) |
| Site Error: | 0.0usft | North Reference: | True |
| Reference Well: | PUCKETT 23C-1 | Survey Calculation Method: | Minimum Curvature |
| Well Error: | 0.0usft | Output errors are at | 2.00 sigma |
| Reference Wellbore | DD | Database: | USA EDM 5000 Multi Users DB |
| Reference Design: | Plan #1 | Offset TVD Reference: | Offset Datum |

| Offset Design S1-T7S-R97W (Mesa E1 797) - PUCKETT 11B-1 - DD - Plan #1 | | | | | | | | | | | | | Offset Site Error: | 0.0 usft |
|--|-----------------------------|-----------------------------|-----------------------------|---------------------|------------------|-----------------------------|------------------------------|-------------------------------|------------------------------|----------------------|---------|---------------|--------------------|----------|
| Survey Program: 0-ISCWSA MWD | | | | | | | | | | | | | Offset Well Error: | 0.0 usft |
| Reference | | Offset | | Semi Major Axis | | Highside Toolface (°) | Distance | | Total Uncertainty Axis | Separation Factor | Warning | | | |
| Measured Depth (usft) | Vertical Depth (usft) | Measured Depth (usft) | Vertical Depth (usft) | Reference (usft) | Offset (usft) | | Between Centres (usft) | Between Ellipses (usft) | | | | | | |
| 0.0 | 0.0 | 0.0 | 0.0 | 0.0 | 0.0 | 29.08 | 14.2 | 7.9 | 16.3 | | | | | |
| 100.0 | 100.0 | 100.0 | 100.0 | 0.1 | 0.1 | 29.08 | 14.2 | 7.9 | 16.3 | 16.1 | 0.18 | 90.427 | | |
| 200.0 | 200.0 | 200.0 | 200.0 | 0.3 | 0.3 | 29.08 | 14.2 | 7.9 | 16.3 | 15.6 | 0.63 | 25.836 CC, ES | | |
| 300.0 | 300.0 | 299.4 | 299.3 | 0.5 | 0.5 | 22.88 | 16.6 | 7.0 | 18.1 | 17.0 | 1.08 | 16.687 | | |
| 400.0 | 400.0 | 397.9 | 397.6 | 0.7 | 0.8 | 171.33 | 23.8 | 4.4 | 26.9 | 25.3 | 1.62 | 16.589 SF | | |
| 500.0 | 499.6 | 494.4 | 493.2 | 1.0 | 1.1 | 164.41 | 35.5 | 0.2 | 45.9 | 43.7 | 2.23 | 20.623 | | |
| 600.0 | 598.8 | 587.5 | 584.8 | 1.2 | 1.4 | 172.96 | 51.0 | -5.5 | 74.3 | 71.4 | 2.83 | 26.249 | | |
| 700.0 | 697.5 | 676.2 | 671.3 | 1.5 | 1.8 | -178.31 | 69.7 | -12.3 | 111.0 | 107.6 | 3.43 | 32.370 | | |
| 800.0 | 795.4 | 759.6 | 751.6 | 1.9 | 2.2 | -173.49 | 90.7 | -19.9 | 156.0 | 151.9 | 4.03 | 38.660 | | |

Cathedral Energy Services

Anticollision Report

| | | | |
|---------------------------|---------------------------|-------------------------------------|--------------------------------------|
| Company: | Caerus Oil & Gas (NAD 27) | Local Co-ordinate Reference: | Well PUCKETT 23C-1 |
| Project: | Garfield County, CO | TVD Reference: | KB=20' @ 8349.0usft (Patterson #303) |
| Reference Site: | S1-T7S-R97W (Mesa E1 797) | MD Reference: | KB=20' @ 8349.0usft (Patterson #303) |
| Site Error: | 0.0usft | North Reference: | True |
| Reference Well: | PUCKETT 23C-1 | Survey Calculation Method: | Minimum Curvature |
| Well Error: | 0.0usft | Output errors are at | 2.00 sigma |
| Reference Wellbore | DD | Database: | USA EDM 5000 Multi Users DB |
| Reference Design: | Plan #1 | Offset TVD Reference: | Offset Datum |

| Offset Design S1-T7S-R97W (Mesa E1 797) - PUCKETT 11C-1 - DD - Plan #1 | | | | | | | | | | | | | Offset Site Error: | 0.0 usft |
|--|-----------------------|-----------------------|-----------------------|------------------|---------------|-----------------------|-------------------------------------|--------------|------------------------|-------------------------|------------------------|-------------------|--------------------|----------|
| Survey Program: 0-ISWWSA MWD | | | | | | | | | | | | | Offset Well Error: | 0.0 usft |
| Reference | | Offset | | Semi Major Axis | | | Distance | | | | | | Warning | |
| Measured Depth (usft) | Vertical Depth (usft) | Measured Depth (usft) | Vertical Depth (usft) | Reference (usft) | Offset (usft) | Highside Toolface (°) | Offset Wellbore Centre +N/-S (usft) | +E/-W (usft) | Between Centres (usft) | Between Ellipses (usft) | Total Uncertainty Axis | Separation Factor | | |
| 0.0 | 0.0 | 0.0 | 0.0 | 0.0 | 0.0 | 28.47 | 7.3 | 4.0 | 8.3 | | | | | |
| 100.0 | 100.0 | 100.0 | 100.0 | 0.1 | 0.1 | 28.47 | 7.3 | 4.0 | 8.3 | 8.1 | 0.18 | 46.113 | | |
| 200.0 | 200.0 | 200.0 | 200.0 | 0.3 | 0.3 | 28.47 | 7.3 | 4.0 | 8.3 | 7.7 | 0.63 | 13.175 | | |
| 300.0 | 300.0 | 300.0 | 300.0 | 0.5 | 0.5 | 28.47 | 7.3 | 4.0 | 8.3 | 7.2 | 1.08 | 7.685 CC, ES | | |
| 400.0 | 400.0 | 399.6 | 399.6 | 0.7 | 0.8 | -179.03 | 8.6 | 3.3 | 11.9 | 10.3 | 1.58 | 7.528 SF | | |
| 500.0 | 499.6 | 498.0 | 497.8 | 1.0 | 1.0 | 169.90 | 14.4 | 0.7 | 24.7 | 22.5 | 2.15 | 11.471 | | |
| 600.0 | 598.8 | 593.9 | 593.0 | 1.2 | 1.2 | 175.75 | 24.5 | -3.9 | 46.9 | 44.1 | 2.74 | 17.133 | | |
| 700.0 | 697.5 | 686.1 | 684.0 | 1.5 | 1.5 | -177.80 | 38.3 | -10.1 | 77.6 | 74.2 | 3.33 | 23.298 | | |
| 800.0 | 795.4 | 773.5 | 769.4 | 1.9 | 1.9 | -174.45 | 55.0 | -17.7 | 116.9 | 113.0 | 3.94 | 29.700 | | |
| 900.0 | 892.8 | 861.7 | 855.1 | 2.3 | 2.2 | -177.38 | 74.3 | -26.5 | 161.6 | 157.2 | 4.40 | 36.706 | | |

Cathedral Energy Services

Anticollision Report

| | | | |
|---------------------------|---------------------------|-------------------------------------|--------------------------------------|
| Company: | Caerus Oil & Gas (NAD 27) | Local Co-ordinate Reference: | Well PUCKETT 23C-1 |
| Project: | Garfield County, CO | TVD Reference: | KB=20' @ 8349.0usft (Patterson #303) |
| Reference Site: | S1-T7S-R97W (Mesa E1 797) | MD Reference: | KB=20' @ 8349.0usft (Patterson #303) |
| Site Error: | 0.0usft | North Reference: | True |
| Reference Well: | PUCKETT 23C-1 | Survey Calculation Method: | Minimum Curvature |
| Well Error: | 0.0usft | Output errors are at | 2.00 sigma |
| Reference Wellbore | DD | Database: | USA EDM 5000 Multi Users DB |
| Reference Design: | Plan #1 | Offset TVD Reference: | Offset Datum |

| Offset Design S1-T7S-R97W (Mesa E1 797) - PUCKETT 13B-1 - DD - Plan #1 | | | | | | | | | | | | | Offset Site Error: | 0.0 usft |
|--|-----------------------|-----------------------|-----------------------|------------------|---------------|-----------------------|-------------------------------------|--------------|------------------------|-------------------------|------------------|---------------|--------------------|----------|
| Survey Program: 0-ISCSWA MWD | | | | | | | | | | | | | Offset Well Error: | 0.0 usft |
| Reference | | Offset | | Semi Major Axis | | Distance | | Total | | Separation | | Warning | | |
| Measured Depth (usft) | Vertical Depth (usft) | Measured Depth (usft) | Vertical Depth (usft) | Reference (usft) | Offset (usft) | Highside Toolface (°) | Offset Wellbore Centre +N/-S (usft) | +E/-W (usft) | Between Centres (usft) | Between Ellipses (usft) | Uncertainty Axis | Factor | | |
| 0.0 | 0.0 | 0.0 | 0.0 | 0.0 | 0.0 | -150.25 | -6.9 | -4.0 | 8.0 | | | | | |
| 100.0 | 100.0 | 100.0 | 100.0 | 0.1 | 0.1 | -150.25 | -6.9 | -4.0 | 8.0 | 7.8 | 0.18 | 44.298 | | |
| 200.0 | 200.0 | 200.0 | 200.0 | 0.3 | 0.3 | -150.25 | -6.9 | -4.0 | 8.0 | 7.3 | 0.63 | 12.657 CC, ES | | |
| 300.0 | 300.0 | 299.5 | 299.5 | 0.5 | 0.5 | -151.99 | -9.3 | -5.0 | 10.6 | 9.5 | 1.06 | 9.943 SF | | |
| 400.0 | 400.0 | 398.7 | 398.3 | 0.7 | 0.7 | 6.68 | -16.4 | -7.9 | 15.7 | 14.2 | 1.54 | 10.251 | | |
| 500.0 | 499.6 | 497.6 | 496.4 | 1.0 | 1.0 | 6.67 | -28.3 | -12.9 | 20.9 | 18.8 | 2.07 | 10.112 | | |
| 600.0 | 598.8 | 596.2 | 593.4 | 1.2 | 1.4 | 21.05 | -44.7 | -19.7 | 26.7 | 24.1 | 2.57 | 10.381 | | |
| 700.0 | 697.5 | 694.7 | 689.2 | 1.5 | 1.8 | 40.83 | -65.5 | -28.4 | 35.6 | 32.5 | 3.09 | 11.522 | | |
| 800.0 | 795.4 | 793.9 | 785.5 | 1.9 | 2.3 | 58.86 | -87.4 | -37.6 | 45.5 | 41.7 | 3.74 | 12.171 | | |
| 900.0 | 892.8 | 892.9 | 881.7 | 2.3 | 2.8 | 69.09 | -109.4 | -46.7 | 56.6 | 52.0 | 4.58 | 12.354 | | |
| 1,000.0 | 990.1 | 991.9 | 977.8 | 2.8 | 3.2 | 75.59 | -131.3 | -55.9 | 68.9 | 63.3 | 5.53 | 12.460 | | |
| 1,100.0 | 1,087.4 | 1,090.9 | 1,073.9 | 3.2 | 3.7 | 80.09 | -153.2 | -65.1 | 81.7 | 75.2 | 6.50 | 12.565 | | |
| 1,200.0 | 1,184.8 | 1,189.9 | 1,170.0 | 3.7 | 4.2 | 83.36 | -175.1 | -74.2 | 94.9 | 87.4 | 7.49 | 12.671 | | |
| 1,300.0 | 1,282.1 | 1,288.9 | 1,266.1 | 4.2 | 4.7 | 85.83 | -197.1 | -83.4 | 108.4 | 99.9 | 8.48 | 12.775 | | |
| 1,400.0 | 1,379.5 | 1,387.9 | 1,362.2 | 4.6 | 5.2 | 87.75 | -219.0 | -92.5 | 122.0 | 112.5 | 9.48 | 12.872 | | |
| 1,500.0 | 1,476.8 | 1,486.9 | 1,458.3 | 5.1 | 5.7 | 89.28 | -240.9 | -101.7 | 135.7 | 125.2 | 10.47 | 12.961 | | |
| 1,600.0 | 1,574.2 | 1,585.9 | 1,554.4 | 5.6 | 6.2 | 90.54 | -262.9 | -110.8 | 149.5 | 138.0 | 11.46 | 13.043 | | |
| 1,700.0 | 1,671.5 | 1,684.9 | 1,650.5 | 6.1 | 6.7 | 91.58 | -284.8 | -120.0 | 163.3 | 150.9 | 12.45 | 13.117 | | |
| 1,800.0 | 1,768.8 | 1,783.9 | 1,746.6 | 6.6 | 7.2 | 92.46 | -306.7 | -129.2 | 177.2 | 163.8 | 13.44 | 13.185 | | |
| 1,900.0 | 1,866.2 | 1,882.9 | 1,842.7 | 7.1 | 7.7 | 93.21 | -328.6 | -138.3 | 191.1 | 176.7 | 14.43 | 13.247 | | |

Cathedral Energy Services

Anticollision Report

| | | | |
|---------------------------|---------------------------|-------------------------------------|--------------------------------------|
| Company: | Caerus Oil & Gas (NAD 27) | Local Co-ordinate Reference: | Well PUCKETT 23C-1 |
| Project: | Garfield County, CO | TVD Reference: | KB=20' @ 8349.0usft (Patterson #303) |
| Reference Site: | S1-T7S-R97W (Mesa E1 797) | MD Reference: | KB=20' @ 8349.0usft (Patterson #303) |
| Site Error: | 0.0usft | North Reference: | True |
| Reference Well: | PUCKETT 23C-1 | Survey Calculation Method: | Minimum Curvature |
| Well Error: | 0.0usft | Output errors are at | 2.00 sigma |
| Reference Wellbore | DD | Database: | USA EDM 5000 Multi Users DB |
| Reference Design: | Plan #1 | Offset TVD Reference: | Offset Datum |

| Offset Design S1-T7S-R97W (Mesa E1 797) - PUCKETT 21A-1 - HZ - Plan #1 | | | | | | | | | | | | | Offset Site Error: | 0.0 usft |
|--|-----------------------|-----------------------|-----------------------|------------------|---------------|-----------------------|-------------------------------------|--------------|------------------------|-------------------------|------------------------|-------------------|--------------------|----------|
| Survey Program: 0-ISWWSA MWD | | | | | | | | | | | | | Offset Well Error: | 0.0 usft |
| Reference | | Offset | | Semi Major Axis | | | Distance | | | | | | Warning | |
| Measured Depth (usft) | Vertical Depth (usft) | Measured Depth (usft) | Vertical Depth (usft) | Reference (usft) | Offset (usft) | Highside Toolface (°) | Offset Wellbore Centre +N/-S (usft) | +E/-W (usft) | Between Centres (usft) | Between Ellipses (usft) | Total Uncertainty Axis | Separation Factor | | |
| 0.0 | 0.0 | 0.0 | 0.0 | 0.0 | 0.0 | 30.05 | 27.3 | 15.8 | 31.6 | | | | | |
| 100.0 | 100.0 | 100.0 | 100.0 | 0.1 | 0.1 | 30.05 | 27.3 | 15.8 | 31.6 | 31.4 | 0.18 | 175.546 | | |
| 200.0 | 200.0 | 200.0 | 200.0 | 0.3 | 0.3 | 30.05 | 27.3 | 15.8 | 31.6 | 30.9 | 0.63 | 50.156 | | |
| 300.0 | 300.0 | 300.0 | 300.0 | 0.5 | 0.5 | 30.05 | 27.3 | 15.8 | 31.6 | 30.5 | 1.08 | 29.258 CC, ES | | |
| 400.0 | 400.0 | 398.7 | 398.7 | 0.7 | 0.8 | -173.78 | 29.7 | 14.9 | 35.9 | 34.3 | 1.58 | 22.756 | | |
| 500.0 | 499.6 | 496.0 | 495.6 | 1.0 | 1.0 | 178.93 | 36.8 | 12.4 | 49.4 | 47.2 | 2.17 | 22.721 SF | | |
| 600.0 | 598.8 | 590.3 | 589.3 | 1.2 | 1.2 | -173.29 | 47.7 | 11.0 | 72.5 | 69.8 | 2.73 | 26.579 | | |
| 700.0 | 697.5 | 681.3 | 679.2 | 1.5 | 1.5 | -164.05 | 61.9 | 12.0 | 103.4 | 100.1 | 3.28 | 31.561 | | |
| 800.0 | 795.4 | 768.5 | 764.6 | 1.9 | 1.8 | -158.38 | 78.8 | 15.3 | 141.7 | 137.9 | 3.83 | 36.965 | | |
| 900.0 | 892.8 | 851.8 | 845.5 | 2.3 | 2.2 | -159.59 | 97.9 | 20.5 | 185.7 | 181.4 | 4.29 | 43.230 | | |

Cathedral Energy Services

Anticollision Report

| | | | |
|---------------------------|---------------------------|-------------------------------------|--------------------------------------|
| Company: | Caerus Oil & Gas (NAD 27) | Local Co-ordinate Reference: | Well PUCKETT 23C-1 |
| Project: | Garfield County, CO | TVD Reference: | KB=20' @ 8349.0usft (Patterson #303) |
| Reference Site: | S1-T7S-R97W (Mesa E1 797) | MD Reference: | KB=20' @ 8349.0usft (Patterson #303) |
| Site Error: | 0.0usft | North Reference: | True |
| Reference Well: | PUCKETT 23C-1 | Survey Calculation Method: | Minimum Curvature |
| Well Error: | 0.0usft | Output errors are at | 2.00 sigma |
| Reference Wellbore | DD | Database: | USA EDM 5000 Multi Users DB |
| Reference Design: | Plan #1 | Offset TVD Reference: | Offset Datum |

| Offset Design S1-T7S-R97W (Mesa E1 797) - PUCKETT 21C-1 - DD - Plan #1 | | | | | | | | | | | | | Offset Site Error: 0.0 usft | |
|--|-----------------------|-----------------------|-----------------------|------------------|---------------|-----------------------|-------------------------------------|--------------|------------------------|-------------------------|------------------------|-------------------|-----------------------------|--|
| Survey Program: 0-ISWWSA MWD | | | | | | | | | | | | | Offset Well Error: 0.0 usft | |
| Reference | | Offset | | Semi Major Axis | | | Distance | | | | | | Warning | |
| Measured Depth (usft) | Vertical Depth (usft) | Measured Depth (usft) | Vertical Depth (usft) | Reference (usft) | Offset (usft) | Highside Toolface (°) | Offset Wellbore Centre +N/-S (usft) | +E/-W (usft) | Between Centres (usft) | Between Ellipses (usft) | Total Uncertainty Axis | Separation Factor | | |
| 0.0 | 0.0 | 0.0 | 0.0 | 0.0 | 0.0 | 29.37 | 34.6 | 19.5 | 39.7 | | | | | |
| 100.0 | 100.0 | 100.0 | 100.0 | 0.1 | 0.1 | 29.37 | 34.6 | 19.5 | 39.7 | 39.5 | 0.18 | 220.848 | | |
| 200.0 | 200.0 | 200.0 | 200.0 | 0.3 | 0.3 | 29.37 | 34.6 | 19.5 | 39.7 | 39.1 | 0.63 | 63.100 | | |
| 300.0 | 300.0 | 300.0 | 300.0 | 0.5 | 0.5 | 29.37 | 34.6 | 19.5 | 39.7 | 38.6 | 1.08 | 36.808 | CC, ES | |
| 400.0 | 400.0 | 399.0 | 399.0 | 0.7 | 0.8 | -171.65 | 35.2 | 19.4 | 42.8 | 41.3 | 1.57 | 27.247 | | |
| 500.0 | 499.6 | 496.1 | 496.0 | 1.0 | 1.0 | -175.65 | 40.2 | 19.0 | 55.0 | 52.8 | 2.14 | 25.656 | SF | |
| 600.0 | 598.8 | 590.7 | 590.1 | 1.2 | 1.2 | -167.73 | 49.5 | 18.8 | 76.4 | 73.7 | 2.70 | 28.268 | | |
| 700.0 | 697.5 | 682.4 | 681.0 | 1.5 | 1.5 | -158.71 | 61.7 | 21.5 | 105.1 | 101.9 | 3.23 | 32.557 | | |
| 800.0 | 795.4 | 770.7 | 767.8 | 1.9 | 1.8 | -153.21 | 76.4 | 27.1 | 140.9 | 137.1 | 3.78 | 37.270 | | |
| 900.0 | 892.8 | 858.2 | 853.2 | 2.3 | 2.1 | -154.59 | 93.6 | 35.1 | 181.8 | 177.6 | 4.26 | 42.654 | | |

Cathedral Energy Services

Anticollision Report

| | | | |
|---------------------------|---------------------------|-------------------------------------|--------------------------------------|
| Company: | Caerus Oil & Gas (NAD 27) | Local Co-ordinate Reference: | Well PUCKETT 23C-1 |
| Project: | Garfield County, CO | TVD Reference: | KB=20' @ 8349.0usft (Patterson #303) |
| Reference Site: | S1-T7S-R97W (Mesa E1 797) | MD Reference: | KB=20' @ 8349.0usft (Patterson #303) |
| Site Error: | 0.0usft | North Reference: | True |
| Reference Well: | PUCKETT 23C-1 | Survey Calculation Method: | Minimum Curvature |
| Well Error: | 0.0usft | Output errors are at | 2.00 sigma |
| Reference Wellbore | DD | Database: | USA EDM 5000 Multi Users DB |
| Reference Design: | Plan #1 | Offset TVD Reference: | Offset Datum |

| Offset Design S1-T7S-R97W (Mesa E1 797) - PUCKETT 21D-1 - DD - Plan #1 | | | | | | | | | | | | | Offset Site Error: 0.0 usft | |
|--|-----------------------|-----------------------|-----------------------|------------------|---------------|-----------------------|-------------------------------------|--------------|------------------------|-------------------------|------------------------|-------------------|-----------------------------|---------|
| Survey Program: 0-ISWWSA MWD | | | | | | | | | | | | | Offset Well Error: 0.0 usft | |
| Reference | | Offset | | Semi Major Axis | | | Distance | | | | | | | Warning |
| Measured Depth (usft) | Vertical Depth (usft) | Measured Depth (usft) | Vertical Depth (usft) | Reference (usft) | Offset (usft) | Highside Toolface (°) | Offset Wellbore Centre +N/-S (usft) | +E/-W (usft) | Between Centres (usft) | Between Ellipses (usft) | Total Uncertainty Axis | Separation Factor | | |
| 0.0 | 0.0 | 0.0 | 0.0 | 0.0 | 0.0 | 29.43 | 41.5 | 23.4 | 47.7 | | | | | |
| 100.0 | 100.0 | 100.0 | 100.0 | 0.1 | 0.1 | 29.43 | 41.5 | 23.4 | 47.7 | 47.5 | 0.18 | 265.168 | | |
| 200.0 | 200.0 | 200.0 | 200.0 | 0.3 | 0.3 | 29.43 | 41.5 | 23.4 | 47.7 | 47.1 | 0.63 | 75.762 | | |
| 300.0 | 300.0 | 300.0 | 300.0 | 0.5 | 0.5 | 29.43 | 41.5 | 23.4 | 47.7 | 46.6 | 1.08 | 44.195 CC, ES | | |
| 400.0 | 400.0 | 400.0 | 400.0 | 0.7 | 0.8 | -171.04 | 41.5 | 23.4 | 50.3 | 48.7 | 1.57 | 32.036 | | |
| 500.0 | 499.6 | 496.6 | 496.6 | 1.0 | 1.0 | -171.97 | 43.6 | 24.8 | 60.5 | 58.4 | 2.12 | 28.513 SF | | |
| 600.0 | 598.8 | 591.2 | 590.9 | 1.2 | 1.2 | -161.01 | 49.6 | 28.6 | 80.2 | 77.5 | 2.66 | 30.170 | | |
| 700.0 | 697.5 | 683.0 | 681.9 | 1.5 | 1.4 | -151.19 | 59.1 | 34.8 | 107.0 | 103.8 | 3.19 | 33.588 | | |
| 800.0 | 795.4 | 772.1 | 769.7 | 1.9 | 1.7 | -146.06 | 71.8 | 43.0 | 140.7 | 136.9 | 3.75 | 37.499 | | |
| 900.0 | 892.8 | 864.7 | 860.7 | 2.3 | 2.0 | -148.46 | 86.4 | 52.4 | 177.6 | 173.4 | 4.24 | 41.854 | | |

Cathedral Energy Services

Anticollision Report

| | | | |
|---------------------------|---------------------------|-------------------------------------|--------------------------------------|
| Company: | Caerus Oil & Gas (NAD 27) | Local Co-ordinate Reference: | Well PUCKETT 23C-1 |
| Project: | Garfield County, CO | TVD Reference: | KB=20' @ 8349.0usft (Patterson #303) |
| Reference Site: | S1-T7S-R97W (Mesa E1 797) | MD Reference: | KB=20' @ 8349.0usft (Patterson #303) |
| Site Error: | 0.0usft | North Reference: | True |
| Reference Well: | PUCKETT 23C-1 | Survey Calculation Method: | Minimum Curvature |
| Well Error: | 0.0usft | Output errors are at | 2.00 sigma |
| Reference Wellbore | DD | Database: | USA EDM 5000 Multi Users DB |
| Reference Design: | Plan #1 | Offset TVD Reference: | Offset Datum |

| Offset Design S1-T7S-R97W (Mesa E1 797) - PUCKETT 22A-36 - DD - Plan #1 | | | | | | | | | | | | | Offset Site Error: | 0.0 usft |
|---|-----------------------|-----------------------|-----------------------|------------------|---------------|-----------------------|-------------------------------------|--------------|------------------------|-------------------------|------------------------|-------------------|--------------------|----------|
| Survey Program: 0-ISWWSA MWD | | | | | | | | | | | | | Offset Well Error: | 0.0 usft |
| Reference | | Offset | | Semi Major Axis | | | Distance | | | | | | Warning | |
| Measured Depth (usft) | Vertical Depth (usft) | Measured Depth (usft) | Vertical Depth (usft) | Reference (usft) | Offset (usft) | Highside Toolface (°) | Offset Wellbore Centre +N/-S (usft) | +E/-W (usft) | Between Centres (usft) | Between Ellipses (usft) | Total Uncertainty Axis | Separation Factor | | |
| 0.0 | 0.0 | 0.0 | 0.0 | 0.0 | 0.0 | 30.16 | 20.4 | 11.9 | 23.6 | | | | | |
| 100.0 | 100.0 | 100.0 | 100.0 | 0.1 | 0.1 | 30.16 | 20.4 | 11.9 | 23.6 | 23.4 | 0.18 | 131.249 | | |
| 200.0 | 200.0 | 200.0 | 200.0 | 0.3 | 0.3 | 30.16 | 20.4 | 11.9 | 23.6 | 23.0 | 0.63 | 37.500 | | |
| 255.6 | 255.6 | 255.6 | 255.6 | 0.4 | 0.4 | 30.16 | 20.4 | 11.9 | 23.6 | 22.7 | 0.88 | 26.840 CC | | |
| 300.0 | 300.0 | 299.8 | 299.8 | 0.5 | 0.5 | 29.85 | 20.6 | 11.8 | 23.7 | 22.6 | 1.08 | 21.975 ES | | |
| 400.0 | 400.0 | 398.7 | 398.6 | 0.7 | 0.8 | -177.05 | 24.1 | 10.4 | 28.9 | 27.3 | 1.58 | 18.236 SF | | |
| 500.0 | 499.6 | 496.0 | 495.5 | 1.0 | 1.0 | 174.22 | 32.2 | 7.2 | 43.6 | 41.4 | 2.19 | 19.917 | | |
| 600.0 | 598.8 | 590.1 | 588.8 | 1.2 | 1.3 | -177.90 | 44.5 | 4.7 | 68.1 | 65.4 | 2.76 | 24.730 | | |
| 700.0 | 697.5 | 680.6 | 677.9 | 1.5 | 1.6 | -168.64 | 60.2 | 4.0 | 100.9 | 97.5 | 3.32 | 30.379 | | |
| 800.0 | 795.4 | 766.6 | 761.8 | 1.9 | 1.9 | -163.00 | 78.9 | 4.7 | 141.4 | 137.5 | 3.89 | 36.370 | | |
| 900.0 | 892.8 | 848.4 | 840.9 | 2.3 | 2.3 | -164.29 | 99.8 | 6.7 | 187.7 | 183.4 | 4.34 | 43.275 | | |

Cathedral Energy Services

Anticollision Report

| | | | |
|---------------------------|---------------------------|-------------------------------------|--------------------------------------|
| Company: | Caerus Oil & Gas (NAD 27) | Local Co-ordinate Reference: | Well PUCKETT 23C-1 |
| Project: | Garfield County, CO | TVD Reference: | KB=20' @ 8349.0usft (Patterson #303) |
| Reference Site: | S1-T7S-R97W (Mesa E1 797) | MD Reference: | KB=20' @ 8349.0usft (Patterson #303) |
| Site Error: | 0.0usft | North Reference: | True |
| Reference Well: | PUCKETT 23C-1 | Survey Calculation Method: | Minimum Curvature |
| Well Error: | 0.0usft | Output errors are at | 2.00 sigma |
| Reference Wellbore | DD | Database: | USA EDM 5000 Multi Users DB |
| Reference Design: | Plan #1 | Offset TVD Reference: | Offset Datum |

| Offset Design S1-T7S-R97W (Mesa E1 797) - PUCKETT 22C-1 - DD - Plan #1 | | | | | | | | | | | | | Offset Site Error: | 0.0 usft |
|--|-----------------------|-----------------------|-----------------------|------------------|---------------|-----------------------|-------------------------------------|--------------|------------------------|-------------------------|------------------------|-------------------|--------------------|----------|
| Survey Program: 0-ISCWSA MWD | | | | | | | | | | | | | Offset Well Error: | 0.0 usft |
| Reference | | Offset | | Semi Major Axis | | | Distance | | | | | | Warning | |
| Measured Depth (usft) | Vertical Depth (usft) | Measured Depth (usft) | Vertical Depth (usft) | Reference (usft) | Offset (usft) | Highside Toolface (°) | Offset Wellbore Centre +N/-S (usft) | +E/-W (usft) | Between Centres (usft) | Between Ellipses (usft) | Total Uncertainty Axis | Separation Factor | | |
| 0.0 | 0.0 | 0.0 | 0.0 | 0.0 | 0.0 | 41.46 | 36.4 | 32.2 | 48.6 | | | | | |
| 100.0 | 100.0 | 100.0 | 100.0 | 0.1 | 0.1 | 41.46 | 36.4 | 32.2 | 48.6 | 48.4 | 0.18 | 270.316 | | |
| 200.0 | 200.0 | 200.0 | 200.0 | 0.3 | 0.3 | 41.46 | 36.4 | 32.2 | 48.6 | 48.0 | 0.63 | 77.233 | | |
| 300.0 | 300.0 | 300.0 | 300.0 | 0.5 | 0.5 | 41.46 | 36.4 | 32.2 | 48.6 | 47.5 | 1.08 | 45.053 CC, ES | | |
| 400.0 | 400.0 | 400.0 | 400.0 | 0.7 | 0.8 | -159.59 | 36.4 | 32.2 | 51.1 | 49.5 | 1.56 | 32.670 | | |
| 500.0 | 499.6 | 499.6 | 499.6 | 1.0 | 1.0 | -162.20 | 36.4 | 32.2 | 58.5 | 56.4 | 2.10 | 27.819 | | |
| 600.0 | 598.8 | 598.8 | 598.8 | 1.2 | 1.2 | -153.83 | 36.4 | 32.2 | 70.2 | 67.6 | 2.60 | 27.021 SF | | |
| 700.0 | 697.5 | 695.6 | 695.6 | 1.5 | 1.4 | -145.81 | 36.3 | 34.6 | 85.3 | 82.2 | 3.08 | 27.671 | | |
| 800.0 | 795.4 | 793.4 | 793.2 | 1.9 | 1.6 | -142.09 | 36.1 | 39.9 | 104.1 | 100.5 | 3.61 | 28.839 | | |
| 900.0 | 892.8 | 890.9 | 890.6 | 2.3 | 1.8 | -145.84 | 35.8 | 45.2 | 124.6 | 120.5 | 4.10 | 30.409 | | |
| 1,000.0 | 990.1 | 988.5 | 988.0 | 2.8 | 2.1 | -148.85 | 35.6 | 50.6 | 145.6 | 141.0 | 4.59 | 31.733 | | |
| 1,100.0 | 1,087.4 | 1,086.0 | 1,085.4 | 3.2 | 2.3 | -151.11 | 35.3 | 55.9 | 166.9 | 161.8 | 5.09 | 32.818 | | |
| 1,200.0 | 1,184.8 | 1,183.5 | 1,182.7 | 3.7 | 2.5 | -152.85 | 35.1 | 61.3 | 188.4 | 182.8 | 5.59 | 33.709 | | |

Cathedral Energy Services

Anticollision Report

| | | | |
|---------------------------|---------------------------|-------------------------------------|--------------------------------------|
| Company: | Caerus Oil & Gas (NAD 27) | Local Co-ordinate Reference: | Well PUCKETT 23C-1 |
| Project: | Garfield County, CO | TVD Reference: | KB=20' @ 8349.0usft (Patterson #303) |
| Reference Site: | S1-T7S-R97W (Mesa E1 797) | MD Reference: | KB=20' @ 8349.0usft (Patterson #303) |
| Site Error: | 0.0usft | North Reference: | True |
| Reference Well: | PUCKETT 23C-1 | Survey Calculation Method: | Minimum Curvature |
| Well Error: | 0.0usft | Output errors are at | 2.00 sigma |
| Reference Wellbore | DD | Database: | USA EDM 5000 Multi Users DB |
| Reference Design: | Plan #1 | Offset TVD Reference: | Offset Datum |

| Offset Design S1-T7S-R97W (Mesa E1 797) - PUCKETT 22D-1 - DD - Plan #1 | | | | | | | | | | | | | Offset Site Error: | 0.0 usft |
|--|-----------------------|-----------------------|-----------------------|------------------|---------------|-----------------------|-------------------------------------|--------------|------------------------|-------------------------|------------------------|-------------------|--------------------|----------|
| Survey Program: 0-ISCSWA MWD | | | | | | | | | | | | | Offset Well Error: | 0.0 usft |
| Reference | | Offset | | Semi Major Axis | | | Distance | | | | | Warning | | |
| Measured Depth (usft) | Vertical Depth (usft) | Measured Depth (usft) | Vertical Depth (usft) | Reference (usft) | Offset (usft) | Highside Toolface (°) | Offset Wellbore Centre +N/-S (usft) | +E/-W (usft) | Between Centres (usft) | Between Ellipses (usft) | Total Uncertainty Axis | Separation Factor | | |
| 0.0 | 0.0 | 0.0 | 0.0 | 0.0 | 0.0 | 47.53 | 22.2 | 24.3 | 32.9 | | | | | |
| 100.0 | 100.0 | 100.0 | 100.0 | 0.1 | 0.1 | 47.53 | 22.2 | 24.3 | 32.9 | 32.7 | 0.18 | 183.035 | | |
| 200.0 | 200.0 | 200.0 | 200.0 | 0.3 | 0.3 | 47.53 | 22.2 | 24.3 | 32.9 | 32.3 | 0.63 | 52.296 | | |
| 300.0 | 300.0 | 300.0 | 300.0 | 0.5 | 0.5 | 47.53 | 22.2 | 24.3 | 32.9 | 31.8 | 1.08 | 30.506 CC, ES | | |
| 400.0 | 400.0 | 400.0 | 400.0 | 0.7 | 0.8 | -154.41 | 22.2 | 24.3 | 35.3 | 33.7 | 1.56 | 22.622 | | |
| 500.0 | 499.6 | 499.6 | 499.6 | 1.0 | 1.0 | -158.90 | 22.2 | 24.3 | 42.5 | 40.4 | 2.10 | 20.265 SF | | |
| 600.0 | 598.8 | 598.2 | 598.1 | 1.2 | 1.2 | -149.74 | 21.2 | 26.6 | 54.6 | 52.1 | 2.57 | 21.228 | | |
| 700.0 | 697.5 | 696.3 | 695.9 | 1.5 | 1.4 | -139.20 | 18.3 | 33.6 | 69.6 | 66.5 | 3.05 | 22.823 | | |
| 800.0 | 795.4 | 794.5 | 793.5 | 1.9 | 1.6 | -133.36 | 13.9 | 43.9 | 86.7 | 83.1 | 3.60 | 24.091 | | |
| 900.0 | 892.8 | 892.7 | 891.1 | 2.3 | 1.9 | -135.83 | 9.4 | 54.5 | 104.8 | 100.7 | 4.17 | 25.160 | | |
| 1,000.0 | 990.1 | 990.9 | 988.6 | 2.8 | 2.2 | -137.89 | 5.0 | 65.0 | 123.2 | 118.4 | 4.75 | 25.905 | | |
| 1,100.0 | 1,087.4 | 1,089.2 | 1,086.2 | 3.2 | 2.5 | -139.42 | 0.5 | 75.6 | 141.6 | 136.2 | 5.36 | 26.429 | | |
| 1,200.0 | 1,184.8 | 1,187.4 | 1,183.7 | 3.7 | 2.7 | -140.60 | -4.0 | 86.2 | 160.1 | 154.1 | 5.97 | 26.808 | | |
| 1,300.0 | 1,282.1 | 1,285.6 | 1,281.3 | 4.2 | 3.0 | -141.53 | -8.4 | 96.7 | 178.7 | 172.1 | 6.60 | 27.090 | | |
| 1,400.0 | 1,379.5 | 1,383.8 | 1,378.8 | 4.6 | 3.3 | -142.29 | -12.9 | 107.3 | 197.3 | 190.1 | 7.23 | 27.306 | | |

Cathedral Energy Services

Anticollision Report

| | | | |
|---------------------------|---------------------------|-------------------------------------|--------------------------------------|
| Company: | Caerus Oil & Gas (NAD 27) | Local Co-ordinate Reference: | Well PUCKETT 23C-1 |
| Project: | Garfield County, CO | TVD Reference: | KB=20' @ 8349.0usft (Patterson #303) |
| Reference Site: | S1-T7S-R97W (Mesa E1 797) | MD Reference: | KB=20' @ 8349.0usft (Patterson #303) |
| Site Error: | 0.0usft | North Reference: | True |
| Reference Well: | PUCKETT 23C-1 | Survey Calculation Method: | Minimum Curvature |
| Well Error: | 0.0usft | Output errors are at | 2.00 sigma |
| Reference Wellbore | DD | Database: | USA EDM 5000 Multi Users DB |
| Reference Design: | Plan #1 | Offset TVD Reference: | Offset Datum |

| Offset Design S1-T7S-R97W (Mesa E1 797) - PUCKETT 23A-1 - DD - Plan #1 | | | | | | | | | | | | | Offset Site Error: | 0.0 usft |
|--|-----------------------|-----------------------|-----------------------|------------------|---------------|-----------------------|-------------------------------------|--------------|------------------------|-------------------------|------------------------|-------------------|--------------------|----------|
| Survey Program: 0-ISCSWA MWD | | | | | | | | | | | | | Offset Well Error: | 0.0 usft |
| Reference | | Offset | | Semi Major Axis | | | Distance | | | | | | Warning | |
| Measured Depth (usft) | Vertical Depth (usft) | Measured Depth (usft) | Vertical Depth (usft) | Reference (usft) | Offset (usft) | Highside Toolface (°) | Offset Wellbore Centre +N/-S (usft) | +E/-W (usft) | Between Centres (usft) | Between Ellipses (usft) | Total Uncertainty Axis | Separation Factor | | |
| 0.0 | 0.0 | 0.0 | 0.0 | 0.0 | 0.0 | 80.00 | 2.2 | 12.4 | 12.6 | | | | | |
| 100.0 | 100.0 | 100.0 | 100.0 | 0.1 | 0.1 | 80.00 | 2.2 | 12.4 | 12.6 | 12.4 | 0.18 | 70.141 | | |
| 200.0 | 200.0 | 200.0 | 200.0 | 0.3 | 0.3 | 80.00 | 2.2 | 12.4 | 12.6 | 12.0 | 0.63 | 20.040 | | |
| 300.0 | 300.0 | 300.0 | 300.0 | 0.5 | 0.5 | 80.00 | 2.2 | 12.4 | 12.6 | 11.5 | 1.08 | 11.690 CC, ES | | |
| 400.0 | 400.0 | 400.0 | 400.0 | 0.7 | 0.8 | -129.21 | 2.2 | 12.4 | 14.1 | 12.6 | 1.53 | 9.211 SF | | |
| 500.0 | 499.6 | 499.6 | 499.6 | 1.0 | 1.0 | -146.78 | 2.2 | 12.4 | 20.0 | 17.9 | 2.07 | 9.686 | | |
| 600.0 | 598.8 | 598.9 | 598.9 | 1.2 | 1.2 | -144.12 | 0.4 | 14.3 | 30.7 | 28.2 | 2.55 | 12.072 | | |
| 700.0 | 697.5 | 698.3 | 697.9 | 1.5 | 1.4 | -136.08 | -5.0 | 19.8 | 42.7 | 39.7 | 3.01 | 14.156 | | |
| 800.0 | 795.4 | 797.7 | 796.5 | 1.9 | 1.6 | -130.60 | -14.0 | 29.0 | 55.2 | 51.7 | 3.57 | 15.485 | | |
| 900.0 | 892.8 | 897.2 | 894.4 | 2.3 | 1.9 | -130.13 | -26.3 | 41.5 | 67.9 | 63.7 | 4.20 | 16.180 | | |
| 1,000.0 | 990.1 | 996.4 | 991.9 | 2.8 | 2.3 | -129.48 | -39.2 | 54.7 | 80.5 | 75.6 | 4.90 | 16.418 | | |
| 1,100.0 | 1,087.4 | 1,095.6 | 1,089.4 | 3.2 | 2.7 | -129.00 | -52.0 | 67.9 | 93.0 | 87.4 | 5.65 | 16.470 | | |
| 1,200.0 | 1,184.8 | 1,194.8 | 1,186.8 | 3.7 | 3.0 | -128.64 | -64.9 | 81.1 | 105.6 | 99.2 | 6.42 | 16.438 | | |
| 1,300.0 | 1,282.1 | 1,294.0 | 1,284.3 | 4.2 | 3.4 | -128.35 | -77.8 | 94.2 | 118.2 | 110.9 | 7.22 | 16.370 | | |
| 1,400.0 | 1,379.5 | 1,393.2 | 1,381.8 | 4.6 | 3.8 | -128.12 | -90.7 | 107.4 | 130.7 | 122.7 | 8.03 | 16.289 | | |
| 1,500.0 | 1,476.8 | 1,492.4 | 1,479.3 | 5.1 | 4.2 | -127.93 | -103.6 | 120.6 | 143.3 | 134.5 | 8.84 | 16.205 | | |
| 1,600.0 | 1,574.2 | 1,591.6 | 1,576.8 | 5.6 | 4.6 | -127.76 | -116.4 | 133.7 | 155.9 | 146.2 | 9.67 | 16.124 | | |
| 1,700.0 | 1,671.5 | 1,690.8 | 1,674.2 | 6.1 | 5.0 | -127.63 | -129.3 | 146.9 | 168.5 | 158.0 | 10.50 | 16.048 | | |
| 1,800.0 | 1,768.8 | 1,790.0 | 1,771.7 | 6.6 | 5.4 | -127.51 | -142.2 | 160.1 | 181.0 | 169.7 | 11.33 | 15.977 | | |
| 1,900.0 | 1,866.2 | 1,889.2 | 1,869.2 | 7.1 | 5.8 | -127.41 | -155.1 | 173.3 | 193.6 | 181.4 | 12.17 | 15.912 | | |

Cathedral Energy Services

Anticollision Report

| | | | |
|---------------------------|---------------------------|-------------------------------------|--------------------------------------|
| Company: | Caerus Oil & Gas (NAD 27) | Local Co-ordinate Reference: | Well PUCKETT 23C-1 |
| Project: | Garfield County, CO | TVD Reference: | KB=20' @ 8349.0usft (Patterson #303) |
| Reference Site: | S1-T7S-R97W (Mesa E1 797) | MD Reference: | KB=20' @ 8349.0usft (Patterson #303) |
| Site Error: | 0.0usft | North Reference: | True |
| Reference Well: | PUCKETT 23C-1 | Survey Calculation Method: | Minimum Curvature |
| Well Error: | 0.0usft | Output errors are at | 2.00 sigma |
| Reference Wellbore | DD | Database: | USA EDM 5000 Multi Users DB |
| Reference Design: | Plan #1 | Offset TVD Reference: | Offset Datum |

| Offset Design S1-T7S-R97W (Mesa E1 797) - PUCKETT 23B-1 - DD - Plan #1 | | | | | | | | | | | | | Offset Site Error: | 0.0 usft |
|--|-----------------------|-----------------------|-----------------------|------------------|---------------|-----------------------|-------------------------------------|--------------|------------------------|-------------------------|------------------|--------------|--------------------|----------|
| Survey Program: 0-ISWWSA MWD | | | | | | | | | | | | | Offset Well Error: | 0.0 usft |
| Reference | | Offset | | Semi Major Axis | | Distance | | Total | | Separation | | Warning | | |
| Measured Depth (usft) | Vertical Depth (usft) | Measured Depth (usft) | Vertical Depth (usft) | Reference (usft) | Offset (usft) | Highside Toolface (°) | Offset Wellbore Centre +N/-S (usft) | +E/-W (usft) | Between Centres (usft) | Between Ellipses (usft) | Uncertainty Axis | | | |
| 0.0 | 0.0 | 0.0 | 0.0 | 0.0 | 0.0 | 120.23 | -5.1 | 8.8 | 10.1 | | | | | |
| 100.0 | 100.0 | 100.0 | 100.0 | 0.1 | 0.1 | 120.23 | -5.1 | 8.8 | 10.1 | 9.9 | 0.18 | 56.326 | | |
| 200.0 | 200.0 | 200.0 | 200.0 | 0.3 | 0.3 | 120.23 | -5.1 | 8.8 | 10.1 | 9.5 | 0.63 | 16.093 | | |
| 300.0 | 300.0 | 300.0 | 300.0 | 0.5 | 0.5 | 120.23 | -5.1 | 8.8 | 10.1 | 9.0 | 1.08 | 9.388 | | |
| 382.9 | 382.9 | 382.9 | 382.9 | 0.7 | 0.7 | -90.00 | -5.1 | 8.8 | 10.0 | 8.5 | 1.43 | 6.963 CC | | |
| 400.0 | 400.0 | 400.0 | 400.0 | 0.7 | 0.8 | -94.69 | -5.1 | 8.8 | 10.0 | 8.5 | 1.50 | 6.647 ES, SF | | |
| 500.0 | 499.6 | 499.3 | 499.3 | 1.0 | 1.0 | -121.04 | -7.0 | 10.5 | 14.3 | 12.4 | 1.97 | 7.269 | | |
| 600.0 | 598.8 | 598.3 | 598.0 | 1.2 | 1.2 | -119.48 | -12.8 | 15.6 | 24.3 | 21.9 | 2.45 | 9.931 | | |
| 700.0 | 697.5 | 697.3 | 696.1 | 1.5 | 1.4 | -111.66 | -22.3 | 24.2 | 35.1 | 32.2 | 2.98 | 11.788 | | |
| 800.0 | 795.4 | 796.1 | 793.3 | 1.9 | 1.7 | -106.36 | -35.6 | 36.1 | 46.2 | 42.6 | 3.65 | 12.654 | | |
| 900.0 | 892.8 | 895.0 | 889.5 | 2.3 | 2.1 | -105.52 | -52.5 | 51.3 | 57.9 | 53.4 | 4.47 | 12.944 | | |
| 1,000.0 | 990.1 | 994.3 | 985.8 | 2.8 | 2.6 | -104.05 | -70.5 | 67.5 | 69.9 | 64.6 | 5.37 | 13.023 | | |
| 1,100.0 | 1,087.4 | 1,093.5 | 1,082.0 | 3.2 | 3.1 | -103.01 | -88.6 | 83.7 | 82.0 | 75.7 | 6.30 | 13.012 | | |
| 1,200.0 | 1,184.8 | 1,192.8 | 1,178.2 | 3.7 | 3.6 | -102.24 | -106.7 | 99.9 | 94.1 | 86.8 | 7.25 | 12.970 | | |
| 1,300.0 | 1,282.1 | 1,292.0 | 1,274.5 | 4.2 | 4.1 | -101.65 | -124.8 | 116.1 | 106.2 | 98.0 | 8.22 | 12.918 | | |
| 1,400.0 | 1,379.5 | 1,391.3 | 1,370.7 | 4.6 | 4.6 | -101.17 | -142.8 | 132.3 | 118.3 | 109.1 | 9.19 | 12.866 | | |
| 1,500.0 | 1,476.8 | 1,490.6 | 1,467.0 | 5.1 | 5.1 | -100.79 | -160.9 | 148.5 | 130.4 | 120.2 | 10.17 | 12.818 | | |
| 1,600.0 | 1,574.2 | 1,589.8 | 1,563.2 | 5.6 | 5.6 | -100.47 | -179.0 | 164.7 | 142.5 | 131.4 | 11.16 | 12.773 | | |
| 1,700.0 | 1,671.5 | 1,689.1 | 1,659.5 | 6.1 | 6.1 | -100.20 | -197.0 | 180.9 | 154.7 | 142.5 | 12.15 | 12.733 | | |
| 1,800.0 | 1,768.8 | 1,788.3 | 1,755.7 | 6.6 | 6.6 | -99.97 | -215.1 | 197.1 | 166.8 | 153.6 | 13.14 | 12.697 | | |
| 1,900.0 | 1,866.2 | 1,887.6 | 1,852.0 | 7.1 | 7.1 | -99.77 | -233.2 | 213.4 | 178.9 | 164.8 | 14.13 | 12.665 | | |
| 2,000.0 | 1,963.5 | 1,986.9 | 1,948.2 | 7.6 | 7.6 | -99.59 | -251.2 | 229.6 | 191.0 | 175.9 | 15.12 | 12.636 | | |

Cathedral Energy Services

Anticollision Report

| | | | |
|---------------------------|---------------------------|-------------------------------------|--------------------------------------|
| Company: | Caerus Oil & Gas (NAD 27) | Local Co-ordinate Reference: | Well PUCKETT 23C-1 |
| Project: | Garfield County, CO | TVD Reference: | KB=20' @ 8349.0usft (Patterson #303) |
| Reference Site: | S1-T7S-R97W (Mesa E1 797) | MD Reference: | KB=20' @ 8349.0usft (Patterson #303) |
| Site Error: | 0.0usft | North Reference: | True |
| Reference Well: | PUCKETT 23C-1 | Survey Calculation Method: | Minimum Curvature |
| Well Error: | 0.0usft | Output errors are at | 2.00 sigma |
| Reference Wellbore | DD | Database: | USA EDM 5000 Multi Users DB |
| Reference Design: | Plan #1 | Offset TVD Reference: | Offset Datum |

| Offset Design S1-T7S-R97W (Mesa E1 797) - PUCKETT 31B-1 - DD - Plan #1 | | | | | | | | | | | | | Offset Site Error: 0.0 usft | |
|--|-----------------------|-----------------------|-----------------------|------------------|---------------|-----------------------|-------------------------------------|--------------|------------------------|-------------------------|------------------------|-------------------|-----------------------------|---------|
| Survey Program: 0-ISWWSA MWD | | | | | | | | | | | | | Offset Well Error: 0.0 usft | |
| Reference | | Offset | | Semi Major Axis | | | Distance | | | | | | | Warning |
| Measured Depth (usft) | Vertical Depth (usft) | Measured Depth (usft) | Vertical Depth (usft) | Reference (usft) | Offset (usft) | Highside Toolface (°) | Offset Wellbore Centre +N/-S (usft) | +E/-W (usft) | Between Centres (usft) | Between Ellipses (usft) | Total Uncertainty Axis | Separation Factor | | |
| 0.0 | 0.0 | 0.0 | 0.0 | 0.0 | 0.0 | 29.35 | 55.7 | 31.3 | 63.9 | | | | | |
| 100.0 | 100.0 | 100.0 | 100.0 | 0.1 | 0.1 | 29.35 | 55.7 | 31.3 | 63.9 | 63.8 | 0.18 | 355.549 | | |
| 200.0 | 200.0 | 200.0 | 200.0 | 0.3 | 0.3 | 29.35 | 55.7 | 31.3 | 63.9 | 63.3 | 0.63 | 101.586 | CC, ES | |
| 300.0 | 300.0 | 296.9 | 296.9 | 0.5 | 0.5 | 30.21 | 57.2 | 33.3 | 66.3 | 65.2 | 1.07 | 61.776 | | |
| 400.0 | 400.0 | 393.1 | 392.8 | 0.7 | 0.8 | -167.90 | 61.6 | 39.2 | 75.9 | 74.2 | 1.61 | 47.217 | | |
| 500.0 | 499.6 | 487.3 | 486.2 | 1.0 | 1.0 | -166.09 | 68.6 | 48.6 | 95.2 | 93.0 | 2.20 | 43.170 | SF | |
| 600.0 | 598.8 | 578.3 | 575.9 | 1.2 | 1.3 | -152.64 | 78.1 | 61.3 | 123.2 | 120.4 | 2.75 | 44.839 | | |
| 700.0 | 697.5 | 666.3 | 661.7 | 1.5 | 1.7 | -140.35 | 89.6 | 76.7 | 156.9 | 153.7 | 3.28 | 47.901 | | |
| 800.0 | 795.4 | 750.9 | 743.3 | 1.9 | 2.1 | -133.16 | 102.9 | 94.6 | 196.0 | 192.2 | 3.86 | 50.830 | | |

Cathedral Energy Services

Anticollision Report

| | | | |
|---------------------------|---------------------------|-------------------------------------|--------------------------------------|
| Company: | Caerus Oil & Gas (NAD 27) | Local Co-ordinate Reference: | Well PUCKETT 23C-1 |
| Project: | Garfield County, CO | TVD Reference: | KB=20' @ 8349.0usft (Patterson #303) |
| Reference Site: | S1-T7S-R97W (Mesa E1 797) | MD Reference: | KB=20' @ 8349.0usft (Patterson #303) |
| Site Error: | 0.0usft | North Reference: | True |
| Reference Well: | PUCKETT 23C-1 | Survey Calculation Method: | Minimum Curvature |
| Well Error: | 0.0usft | Output errors are at | 2.00 sigma |
| Reference Wellbore | DD | Database: | USA EDM 5000 Multi Users DB |
| Reference Design: | Plan #1 | Offset TVD Reference: | Offset Datum |

| Offset Design S1-T7S-R97W (Mesa E1 797) - PUCKETT 31C-1 - DD - Plan #1 | | | | | | | | | | | | | Offset Site Error: | 0.0 usft |
|--|-----------------------|-----------------------|-----------------------|------------------|---------------|-----------------------|-------------------------------------|--------------|------------------------|-------------------------|------------------------|-------------------|--------------------|----------|
| Survey Program: 0-ISWWSA MWD | | | | | | | | | | | | | Offset Well Error: | 0.0 usft |
| Reference | | Offset | | Semi Major Axis | | | Distance | | | | | | Warning | |
| Measured Depth (usft) | Vertical Depth (usft) | Measured Depth (usft) | Vertical Depth (usft) | Reference (usft) | Offset (usft) | Highside Toolface (°) | Offset Wellbore Centre +N/-S (usft) | +E/-W (usft) | Between Centres (usft) | Between Ellipses (usft) | Total Uncertainty Axis | Separation Factor | | |
| 0.0 | 0.0 | 0.0 | 0.0 | 0.0 | 0.0 | 29.29 | 48.8 | 27.4 | 56.0 | | | | | |
| 100.0 | 100.0 | 100.0 | 100.0 | 0.1 | 0.1 | 29.29 | 48.8 | 27.4 | 56.0 | 55.8 | 0.18 | 311.230 | | |
| 200.0 | 200.0 | 200.0 | 200.0 | 0.3 | 0.3 | 29.29 | 48.8 | 27.4 | 56.0 | 55.3 | 0.63 | 88.923 | | |
| 233.4 | 233.4 | 233.4 | 233.4 | 0.4 | 0.4 | 29.29 | 48.8 | 27.4 | 56.0 | 55.2 | 0.78 | 71.784 CC, ES | | |
| 300.0 | 300.0 | 298.7 | 298.7 | 0.5 | 0.5 | 29.60 | 49.1 | 27.9 | 56.5 | 55.4 | 1.07 | 52.629 | | |
| 400.0 | 400.0 | 395.8 | 395.6 | 0.7 | 0.8 | -168.61 | 51.7 | 32.1 | 63.6 | 62.0 | 1.58 | 40.190 | | |
| 500.0 | 499.6 | 491.1 | 490.4 | 1.0 | 1.0 | -166.42 | 56.8 | 40.3 | 80.3 | 78.2 | 2.17 | 36.993 SF | | |
| 600.0 | 598.8 | 583.7 | 582.0 | 1.2 | 1.3 | -152.61 | 64.1 | 52.1 | 105.7 | 103.0 | 2.71 | 38.957 | | |
| 700.0 | 697.5 | 673.5 | 670.0 | 1.5 | 1.6 | -140.19 | 73.5 | 67.1 | 136.8 | 133.6 | 3.24 | 42.199 | | |
| 800.0 | 795.4 | 760.1 | 754.1 | 1.9 | 2.0 | -132.97 | 84.5 | 84.9 | 173.2 | 169.4 | 3.83 | 45.248 | | |

Cathedral Energy Services

Anticollision Report

| | | | |
|---------------------------|---------------------------|-------------------------------------|--------------------------------------|
| Company: | Caerus Oil & Gas (NAD 27) | Local Co-ordinate Reference: | Well PUCKETT 23C-1 |
| Project: | Garfield County, CO | TVD Reference: | KB=20' @ 8349.0usft (Patterson #303) |
| Reference Site: | S1-T7S-R97W (Mesa E1 797) | MD Reference: | KB=20' @ 8349.0usft (Patterson #303) |
| Site Error: | 0.0usft | North Reference: | True |
| Reference Well: | PUCKETT 23C-1 | Survey Calculation Method: | Minimum Curvature |
| Well Error: | 0.0usft | Output errors are at | 2.00 sigma |
| Reference Wellbore | DD | Database: | USA EDM 5000 Multi Users DB |
| Reference Design: | Plan #1 | Offset TVD Reference: | Offset Datum |

| Offset Design S1-T7S-R97W (Mesa E1 797) - PUCKETT 32A-1 - DD - Plan #1 | | | | | | | | | | | | | Offset Site Error: | 0.0 usft |
|--|-----------------------|-----------------------|-----------------------|------------------|---------------|-----------------------|-------------------------------------|--------------|------------------------|-------------------------|------------------------|-------------------|--------------------|----------|
| Survey Program: 0-ISCSWA MWD | | | | | | | | | | | | | Offset Well Error: | 0.0 usft |
| Reference | | Offset | | Semi Major Axis | | | Distance | | | | | | Warning | |
| Measured Depth (usft) | Vertical Depth (usft) | Measured Depth (usft) | Vertical Depth (usft) | Reference (usft) | Offset (usft) | Highside Toolface (°) | Offset Wellbore Centre +N/-S (usft) | +E/-W (usft) | Between Centres (usft) | Between Ellipses (usft) | Total Uncertainty Axis | Separation Factor | | |
| 0.0 | 0.0 | 0.0 | 0.0 | 0.0 | 0.0 | 38.38 | 50.6 | 40.1 | 64.6 | | | | | |
| 100.0 | 100.0 | 100.0 | 100.0 | 0.1 | 0.1 | 38.38 | 50.6 | 40.1 | 64.6 | 64.4 | 0.18 | 359.086 | | |
| 200.0 | 200.0 | 200.0 | 200.0 | 0.3 | 0.3 | 38.38 | 50.6 | 40.1 | 64.6 | 63.9 | 0.63 | 102.596 CC, ES | | |
| 300.0 | 300.0 | 298.1 | 298.0 | 0.5 | 0.5 | 39.15 | 50.9 | 41.5 | 65.7 | 64.6 | 1.07 | 61.417 | | |
| 400.0 | 400.0 | 394.9 | 394.7 | 0.7 | 0.8 | -158.38 | 52.2 | 47.5 | 73.2 | 71.6 | 1.58 | 46.396 | | |
| 500.0 | 499.6 | 490.2 | 489.3 | 1.0 | 1.0 | -155.78 | 54.4 | 58.1 | 89.6 | 87.5 | 2.16 | 41.525 SF | | |
| 600.0 | 598.8 | 583.0 | 580.9 | 1.2 | 1.3 | -141.69 | 57.5 | 72.8 | 114.0 | 111.3 | 2.69 | 42.315 | | |
| 700.0 | 697.5 | 673.6 | 669.5 | 1.5 | 1.7 | -128.87 | 61.5 | 91.4 | 142.9 | 139.6 | 3.24 | 44.089 | | |
| 800.0 | 795.4 | 761.8 | 754.8 | 1.9 | 2.1 | -121.29 | 66.1 | 113.4 | 175.9 | 172.0 | 3.88 | 45.357 | | |

Cathedral Energy Services

Anticollision Report

| | | | |
|---------------------------|---------------------------|-------------------------------------|--------------------------------------|
| Company: | Caerus Oil & Gas (NAD 27) | Local Co-ordinate Reference: | Well PUCKETT 23C-1 |
| Project: | Garfield County, CO | TVD Reference: | KB=20' @ 8349.0usft (Patterson #303) |
| Reference Site: | S1-T7S-R97W (Mesa E1 797) | MD Reference: | KB=20' @ 8349.0usft (Patterson #303) |
| Site Error: | 0.0usft | North Reference: | True |
| Reference Well: | PUCKETT 23C-1 | Survey Calculation Method: | Minimum Curvature |
| Well Error: | 0.0usft | Output errors are at | 2.00 sigma |
| Reference Wellbore | DD | Database: | USA EDM 5000 Multi Users DB |
| Reference Design: | Plan #1 | Offset TVD Reference: | Offset Datum |

| Offset Design S1-T7S-R97W (Mesa E1 797) - PUCKETT 32C-1 - DD - Plan #1 | | | | | | | | | | | | Offset Site Error: 0.0 usft | |
|--|-----------------------|-----------------------|-----------------------|------------------|---------------|-----------------------|-------------------------------------|--------------|------------------------|-------------------------|------------------------|-----------------------------|---------|
| Survey Program: 0-ISCWSA MWD | | | | | | | | | | | | Offset Well Error: 0.0 usft | |
| Reference | | Offset | | Semi Major Axis | | | Distance | | | | | | Warning |
| Measured Depth (usft) | Vertical Depth (usft) | Measured Depth (usft) | Vertical Depth (usft) | Reference (usft) | Offset (usft) | Highside Toolface (°) | Offset Wellbore Centre +N/-S (usft) | +E/-W (usft) | Between Centres (usft) | Between Ellipses (usft) | Total Uncertainty Axis | Separation Factor | |
| 0.0 | 0.0 | 0.0 | 0.0 | 0.0 | 0.0 | 39.58 | 43.7 | 36.1 | 56.7 | | | | |
| 100.0 | 100.0 | 100.0 | 100.0 | 0.1 | 0.1 | 39.58 | 43.7 | 36.1 | 56.7 | 56.5 | 0.18 | 315.379 | |
| 200.0 | 200.0 | 200.0 | 200.0 | 0.3 | 0.3 | 39.58 | 43.7 | 36.1 | 56.7 | 56.1 | 0.63 | 90.108 | |
| 300.0 | 300.0 | 300.0 | 300.0 | 0.5 | 0.5 | 39.58 | 43.7 | 36.1 | 56.7 | 55.6 | 1.08 | 52.563 CC, ES | |
| 400.0 | 400.0 | 398.1 | 398.0 | 0.7 | 0.8 | -159.30 | 43.6 | 38.6 | 60.7 | 59.2 | 1.56 | 39.028 | |
| 500.0 | 499.6 | 495.1 | 494.8 | 1.0 | 1.0 | -156.67 | 43.3 | 46.1 | 72.9 | 70.8 | 2.11 | 34.592 SF | |
| 600.0 | 598.8 | 590.4 | 589.3 | 1.2 | 1.2 | -141.94 | 42.9 | 58.1 | 92.3 | 89.7 | 2.62 | 35.169 | |
| 700.0 | 697.5 | 684.1 | 681.5 | 1.5 | 1.5 | -128.55 | 42.2 | 74.6 | 115.7 | 112.6 | 3.17 | 36.516 | |
| 800.0 | 795.4 | 776.0 | 771.1 | 1.9 | 1.9 | -120.52 | 41.4 | 95.1 | 142.7 | 138.9 | 3.82 | 37.356 | |
| 900.0 | 892.8 | 866.2 | 858.0 | 2.3 | 2.4 | -120.13 | 40.5 | 119.4 | 173.0 | 168.5 | 4.57 | 37.885 | |

Cathedral Energy Services

Anticollision Report

| | | | |
|---------------------------|---------------------------|-------------------------------------|--------------------------------------|
| Company: | Caerus Oil & Gas (NAD 27) | Local Co-ordinate Reference: | Well PUCKETT 23C-1 |
| Project: | Garfield County, CO | TVD Reference: | KB=20' @ 8349.0usft (Patterson #303) |
| Reference Site: | S1-T7S-R97W (Mesa E1 797) | MD Reference: | KB=20' @ 8349.0usft (Patterson #303) |
| Site Error: | 0.0usft | North Reference: | True |
| Reference Well: | PUCKETT 23C-1 | Survey Calculation Method: | Minimum Curvature |
| Well Error: | 0.0usft | Output errors are at | 2.00 sigma |
| Reference Wellbore | DD | Database: | USA EDM 5000 Multi Users DB |
| Reference Design: | Plan #1 | Offset TVD Reference: | Offset Datum |

| Offset Design S1-T7S-R97W (Mesa E1 797) - PUCKETT 33A-1 - DD - Plan #1 | | | | | | | | | | | | | Offset Site Error: | 0.0 usft |
|--|-----------------------|-----------------------|-----------------------|------------------|---------------|-----------------------|-------------------------------------|--------------|------------------------|-------------------------|------------------------|-------------------|--------------------|----------|
| Survey Program: 0-ISWWSA MWD | | | | | | | | | | | | | Offset Well Error: | 0.0 usft |
| Reference | | Offset | | Semi Major Axis | | | Distance | | | | | | | Warning |
| Measured Depth (usft) | Vertical Depth (usft) | Measured Depth (usft) | Vertical Depth (usft) | Reference (usft) | Offset (usft) | Highside Toolface (°) | Offset Wellbore Centre +N/-S (usft) | +E/-W (usft) | Between Centres (usft) | Between Ellipses (usft) | Total Uncertainty Axis | Separation Factor | | |
| 0.0 | 0.0 | 0.0 | 0.0 | 0.0 | 0.0 | 43.74 | 29.5 | 28.2 | 40.8 | | | | | |
| 100.0 | 100.0 | 100.0 | 100.0 | 0.1 | 0.1 | 43.74 | 29.5 | 28.2 | 40.8 | 40.7 | 0.18 | 227.082 | | |
| 200.0 | 200.0 | 200.0 | 200.0 | 0.3 | 0.3 | 43.74 | 29.5 | 28.2 | 40.8 | 40.2 | 0.63 | 64.881 | | |
| 300.0 | 300.0 | 300.0 | 300.0 | 0.5 | 0.5 | 43.74 | 29.5 | 28.2 | 40.8 | 39.8 | 1.08 | 37.847 CC, ES | | |
| 400.0 | 400.0 | 399.2 | 399.2 | 0.7 | 0.8 | -155.88 | 29.0 | 29.6 | 43.8 | 42.3 | 1.55 | 28.279 | | |
| 500.0 | 499.6 | 497.6 | 497.4 | 1.0 | 1.0 | -152.97 | 27.0 | 35.6 | 53.8 | 51.7 | 2.08 | 25.908 SF | | |
| 600.0 | 598.8 | 594.7 | 593.8 | 1.2 | 1.2 | -137.62 | 23.4 | 46.2 | 70.0 | 67.4 | 2.58 | 27.145 | | |
| 700.0 | 697.5 | 690.7 | 688.5 | 1.5 | 1.5 | -123.79 | 18.2 | 61.3 | 89.1 | 86.0 | 3.13 | 28.486 | | |
| 800.0 | 795.4 | 785.7 | 781.2 | 1.9 | 1.9 | -115.40 | 11.6 | 80.5 | 110.7 | 106.9 | 3.81 | 29.063 | | |
| 900.0 | 892.8 | 879.5 | 871.7 | 2.3 | 2.3 | -114.32 | 3.6 | 103.9 | 134.8 | 130.2 | 4.62 | 29.198 | | |
| 1,000.0 | 990.1 | 971.7 | 959.4 | 2.8 | 2.9 | -112.52 | -5.6 | 130.9 | 161.5 | 156.0 | 5.51 | 29.307 | | |
| 1,100.0 | 1,087.4 | 1,067.0 | 1,049.1 | 3.2 | 3.5 | -110.49 | -16.0 | 161.2 | 190.0 | 183.5 | 6.48 | 29.317 | | |

Cathedral Energy Services

Anticollision Report

| | | | |
|---------------------------|---------------------------|-------------------------------------|--------------------------------------|
| Company: | Caerus Oil & Gas (NAD 27) | Local Co-ordinate Reference: | Well PUCKETT 23C-1 |
| Project: | Garfield County, CO | TVD Reference: | KB=20' @ 8349.0usft (Patterson #303) |
| Reference Site: | S1-T7S-R97W (Mesa E1 797) | MD Reference: | KB=20' @ 8349.0usft (Patterson #303) |
| Site Error: | 0.0usft | North Reference: | True |
| Reference Well: | PUCKETT 23C-1 | Survey Calculation Method: | Minimum Curvature |
| Well Error: | 0.0usft | Output errors are at | 2.00 sigma |
| Reference Wellbore | DD | Database: | USA EDM 5000 Multi Users DB |
| Reference Design: | Plan #1 | Offset TVD Reference: | Offset Datum |

| Offset Design S1-T7S-R97W (Mesa E1 797) - PUCKETT 33C-1 - DD - Plan #1 | | | | | | | | | | | | | Offset Site Error: | 0.0 usft |
|--|-----------------------|-----------------------|-----------------------|------------------|---------------|-----------------------|-------------------------------------|--------------|------------------------|-------------------------|------------------------|-------------------|--------------------|----------|
| Survey Program: 0-ISCSWA MWD | | | | | | | | | | | | | Offset Well Error: | 0.0 usft |
| Reference | | Offset | | Semi Major Axis | | | Distance | | | | | | Warning | |
| Measured Depth (usft) | Vertical Depth (usft) | Measured Depth (usft) | Vertical Depth (usft) | Reference (usft) | Offset (usft) | Highside Toolface (°) | Offset Wellbore Centre +N/-S (usft) | +E/-W (usft) | Between Centres (usft) | Between Ellipses (usft) | Total Uncertainty Axis | Separation Factor | | |
| 0.0 | 0.0 | 0.0 | 0.0 | 0.0 | 0.0 | 51.12 | 16.4 | 20.3 | 26.1 | | | | | |
| 100.0 | 100.0 | 100.0 | 100.0 | 0.1 | 0.1 | 51.12 | 16.4 | 20.3 | 26.1 | 25.9 | 0.18 | 145.207 | | |
| 200.0 | 200.0 | 200.0 | 200.0 | 0.3 | 0.3 | 51.12 | 16.4 | 20.3 | 26.1 | 25.5 | 0.63 | 41.488 | | |
| 235.5 | 235.5 | 235.5 | 235.5 | 0.4 | 0.4 | 51.12 | 16.4 | 20.3 | 26.1 | 25.3 | 0.79 | 33.094 CC | | |
| 300.0 | 300.0 | 299.8 | 299.8 | 0.5 | 0.5 | 52.46 | 16.0 | 20.9 | 26.3 | 25.2 | 1.07 | 24.632 ES | | |
| 400.0 | 400.0 | 399.1 | 398.9 | 0.7 | 0.7 | -140.88 | 13.2 | 25.2 | 30.4 | 28.9 | 1.53 | 19.927 SF | | |
| 500.0 | 499.6 | 497.5 | 496.8 | 1.0 | 1.0 | -134.61 | 7.6 | 33.7 | 41.3 | 39.2 | 2.06 | 20.061 | | |
| 600.0 | 598.8 | 594.7 | 592.9 | 1.2 | 1.3 | -118.69 | -0.6 | 46.3 | 57.6 | 55.0 | 2.58 | 22.282 | | |
| 700.0 | 697.5 | 691.1 | 687.2 | 1.5 | 1.7 | -104.90 | -11.4 | 62.7 | 75.5 | 72.3 | 3.21 | 23.565 | | |
| 800.0 | 795.4 | 786.7 | 779.7 | 1.9 | 2.1 | -96.66 | -24.7 | 83.0 | 94.7 | 90.7 | 3.99 | 23.756 | | |
| 900.0 | 892.8 | 881.3 | 869.9 | 2.3 | 2.7 | -95.53 | -40.3 | 106.8 | 115.7 | 110.8 | 4.90 | 23.615 | | |
| 1,000.0 | 990.1 | 974.4 | 957.2 | 2.8 | 3.3 | -93.53 | -58.1 | 133.8 | 139.8 | 133.9 | 5.88 | 23.752 | | |
| 1,100.0 | 1,087.4 | 1,069.8 | 1,045.5 | 3.2 | 4.0 | -91.22 | -77.9 | 164.0 | 166.0 | 159.1 | 6.92 | 24.009 | | |
| 1,200.0 | 1,184.8 | 1,166.1 | 1,134.6 | 3.7 | 4.7 | -89.50 | -97.9 | 194.5 | 192.6 | 184.6 | 7.95 | 24.211 | | |

Cathedral Energy Services

Anticollision Report

| | | | |
|---------------------------|---------------------------|-------------------------------------|--------------------------------------|
| Company: | Caerus Oil & Gas (NAD 27) | Local Co-ordinate Reference: | Well PUCKETT 23C-1 |
| Project: | Garfield County, CO | TVD Reference: | KB=20' @ 8349.0usft (Patterson #303) |
| Reference Site: | S1-T7S-R97W (Mesa E1 797) | MD Reference: | KB=20' @ 8349.0usft (Patterson #303) |
| Site Error: | 0.0usft | North Reference: | True |
| Reference Well: | PUCKETT 23C-1 | Survey Calculation Method: | Minimum Curvature |
| Well Error: | 0.0usft | Output errors are at | 2.00 sigma |
| Reference Wellbore | DD | Database: | USA EDM 5000 Multi Users DB |
| Reference Design: | Plan #1 | Offset TVD Reference: | Offset Datum |

| Offset Design S1-T7S-R97W (Mesa E1 797) - PUCKETT 34A-1 - DD - Plan #1 | | | | | | | | | | | | | Offset Site Error: | 0.0 usft |
|--|-----------------------|-----------------------|-----------------------|------------------|---------------|-----------------------|-------------------------------------|--------------|------------------------|-------------------------|------------------------|-------------------|--------------------|----------|
| Survey Program: 0-ISCSWA MWD | | | | | | | | | | | | | Offset Well Error: | 0.0 usft |
| Reference | | Offset | | Semi Major Axis | | | Distance | | | | | | Warning | |
| Measured Depth (usft) | Vertical Depth (usft) | Measured Depth (usft) | Vertical Depth (usft) | Reference (usft) | Offset (usft) | Highside Toolface (°) | Offset Wellbore Centre +N/-S (usft) | +E/-W (usft) | Between Centres (usft) | Between Ellipses (usft) | Total Uncertainty Axis | Separation Factor | | |
| 0.0 | 0.0 | 0.0 | 0.0 | 0.0 | 0.0 | 60.93 | 9.1 | 16.4 | 18.7 | | | | | |
| 100.0 | 100.0 | 100.0 | 100.0 | 0.1 | 0.1 | 60.93 | 9.1 | 16.4 | 18.7 | 18.6 | 0.18 | 104.176 | | |
| 200.0 | 200.0 | 200.0 | 200.0 | 0.3 | 0.3 | 60.93 | 9.1 | 16.4 | 18.7 | 18.1 | 0.63 | 29.765 | | |
| 300.0 | 300.0 | 300.0 | 300.0 | 0.5 | 0.5 | 60.93 | 9.1 | 16.4 | 18.7 | 17.7 | 1.08 | 17.363 CC, ES | | |
| 400.0 | 400.0 | 400.0 | 400.0 | 0.7 | 0.8 | -143.76 | 9.1 | 16.4 | 20.8 | 19.2 | 1.55 | 13.426 SF | | |
| 500.0 | 499.6 | 499.5 | 499.4 | 1.0 | 1.0 | -147.99 | 7.3 | 18.3 | 27.8 | 25.7 | 2.05 | 13.531 | | |
| 600.0 | 598.8 | 598.6 | 598.2 | 1.2 | 1.2 | -135.36 | 2.0 | 23.9 | 39.0 | 36.5 | 2.51 | 15.552 | | |
| 700.0 | 697.5 | 697.5 | 696.3 | 1.5 | 1.4 | -122.82 | -6.7 | 33.2 | 51.1 | 48.1 | 3.02 | 16.948 | | |
| 800.0 | 795.4 | 796.2 | 793.3 | 1.9 | 1.7 | -114.98 | -19.0 | 46.2 | 63.9 | 60.2 | 3.67 | 17.404 | | |
| 900.0 | 892.8 | 894.6 | 889.1 | 2.3 | 2.2 | -113.01 | -34.6 | 62.7 | 77.3 | 72.8 | 4.47 | 17.286 | | |
| 1,000.0 | 990.1 | 992.4 | 983.0 | 2.8 | 2.7 | -108.86 | -53.4 | 82.7 | 91.9 | 86.5 | 5.41 | 16.984 | | |
| 1,100.0 | 1,087.4 | 1,089.0 | 1,074.2 | 3.2 | 3.2 | -103.36 | -75.2 | 105.9 | 108.5 | 102.1 | 6.46 | 16.789 | | |
| 1,200.0 | 1,184.8 | 1,184.0 | 1,162.2 | 3.7 | 3.9 | -97.40 | -99.7 | 131.9 | 128.0 | 120.4 | 7.58 | 16.888 | | |
| 1,300.0 | 1,282.1 | 1,278.5 | 1,248.0 | 4.2 | 4.7 | -91.58 | -126.8 | 160.6 | 150.7 | 142.0 | 8.70 | 17.329 | | |
| 1,400.0 | 1,379.5 | 1,374.6 | 1,335.0 | 4.6 | 5.5 | -86.97 | -154.8 | 190.4 | 175.2 | 165.4 | 9.80 | 17.881 | | |

Cathedral Energy Services

Anticollision Report

| | | | |
|---------------------------|---------------------------|-------------------------------------|--------------------------------------|
| Company: | Caerus Oil & Gas (NAD 27) | Local Co-ordinate Reference: | Well PUCKETT 23C-1 |
| Project: | Garfield County, CO | TVD Reference: | KB=20' @ 8349.0usft (Patterson #303) |
| Reference Site: | S1-T7S-R97W (Mesa E1 797) | MD Reference: | KB=20' @ 8349.0usft (Patterson #303) |
| Site Error: | 0.0usft | North Reference: | True |
| Reference Well: | PUCKETT 23C-1 | Survey Calculation Method: | Minimum Curvature |
| Well Error: | 0.0usft | Output errors are at | 2.00 sigma |
| Reference Wellbore | DD | Database: | USA EDM 5000 Multi Users DB |
| Reference Design: | Plan #1 | Offset TVD Reference: | Offset Datum |

| Offset Design S1-T7S-R97W (Mesa E1 797) - PUCKETT SWD E1-797 - VH - Plan #1 | | | | | | | | | | | | | Offset Site Error: 0.0 usft | |
|---|-----------------------|-----------------------|-----------------------|------------------|---------------|-----------------------|-------------------------------------|--------------|------------------------|-------------------------|------------------------|-------------------|-----------------------------|---------|
| Survey Program: 0-ISCSWA MWD | | | | | | | | | | | | | Offset Well Error: 0.0 usft | |
| Reference | | Offset | | Semi Major Axis | | | Distance | | | | | | | Warning |
| Measured Depth (usft) | Vertical Depth (usft) | Measured Depth (usft) | Vertical Depth (usft) | Reference (usft) | Offset (usft) | Highside Toolface (°) | Offset Wellbore Centre +N/-S (usft) | +E/-W (usft) | Between Centres (usft) | Between Ellipses (usft) | Total Uncertainty Axis | Separation Factor | | |
| 0.0 | 0.0 | 0.0 | 0.0 | 0.0 | 0.0 | 158.24 | -12.0 | 4.8 | 12.9 | | | | | |
| 100.0 | 100.0 | 100.0 | 100.0 | 0.1 | 0.1 | 158.24 | -12.0 | 4.8 | 12.9 | 12.8 | 0.18 | 71.976 | | |
| 200.0 | 200.0 | 200.0 | 200.0 | 0.3 | 0.3 | 158.24 | -12.0 | 4.8 | 12.9 | 12.3 | 0.63 | 20.565 | | |
| 300.0 | 300.0 | 300.0 | 300.0 | 0.5 | 0.5 | 158.24 | -12.0 | 4.8 | 12.9 | 11.9 | 1.08 | 11.996 | | |
| 400.0 | 400.0 | 400.0 | 400.0 | 0.7 | 0.8 | -50.82 | -12.0 | 4.8 | 11.1 | 9.6 | 1.53 | 7.272 | | |
| 492.1 | 491.8 | 491.8 | 491.8 | 0.9 | 1.0 | -90.00 | -12.0 | 4.8 | 8.6 | 6.7 | 1.90 | 4.529 CC, ES | | |
| 500.0 | 499.6 | 499.6 | 499.6 | 1.0 | 1.0 | -95.33 | -12.0 | 4.8 | 8.7 | 6.7 | 1.94 | 4.464 SF | | |
| 600.0 | 598.8 | 598.8 | 598.8 | 1.2 | 1.2 | -137.77 | -12.0 | 4.8 | 15.3 | 12.8 | 2.54 | 6.028 | | |
| 700.0 | 697.5 | 697.5 | 697.5 | 1.5 | 1.4 | -150.54 | -12.0 | 4.8 | 28.7 | 25.6 | 3.11 | 9.220 | | |
| 800.0 | 795.4 | 795.4 | 795.4 | 1.9 | 1.7 | -156.48 | -12.0 | 4.8 | 47.0 | 43.3 | 3.68 | 12.780 | | |
| 900.0 | 892.8 | 892.8 | 892.8 | 2.3 | 1.9 | -163.80 | -12.0 | 4.8 | 68.6 | 64.5 | 4.14 | 16.568 | | |
| 1,000.0 | 990.1 | 990.1 | 990.1 | 2.8 | 2.1 | -167.82 | -12.0 | 4.8 | 90.9 | 86.3 | 4.59 | 19.788 | | |
| 1,100.0 | 1,087.4 | 1,087.4 | 1,087.4 | 3.2 | 2.3 | -170.26 | -12.0 | 4.8 | 113.4 | 108.3 | 5.05 | 22.457 | | |
| 1,200.0 | 1,184.8 | 1,184.8 | 1,184.8 | 3.7 | 2.5 | -171.89 | -12.0 | 4.8 | 136.0 | 130.5 | 5.51 | 24.675 | | |
| 1,300.0 | 1,282.1 | 1,282.1 | 1,282.1 | 4.2 | 2.7 | -173.06 | -12.0 | 4.8 | 158.7 | 152.7 | 5.98 | 26.535 | | |
| 1,400.0 | 1,379.5 | 1,379.5 | 1,379.5 | 4.6 | 3.0 | -173.93 | -12.0 | 4.8 | 181.5 | 175.0 | 6.46 | 28.109 | | |

Cathedral Energy Services

Anticollision Report

| | | | |
|---------------------------|---------------------------|-------------------------------------|--------------------------------------|
| Company: | Caerus Oil & Gas (NAD 27) | Local Co-ordinate Reference: | Well PUCKETT 23C-1 |
| Project: | Garfield County, CO | TVD Reference: | KB=20' @ 8349.0usft (Patterson #303) |
| Reference Site: | S1-T7S-R97W (Mesa E1 797) | MD Reference: | KB=20' @ 8349.0usft (Patterson #303) |
| Site Error: | 0.0usft | North Reference: | True |
| Reference Well: | PUCKETT 23C-1 | Survey Calculation Method: | Minimum Curvature |
| Well Error: | 0.0usft | Output errors are at | 2.00 sigma |
| Reference Wellbore | DD | Database: | USA EDM 5000 Multi Users DB |
| Reference Design: | Plan #1 | Offset TVD Reference: | Offset Datum |

Reference Depths are relative to KB=20' @ 8349.0usft (Patterson #303)
Offset Depths are relative to Offset Datum
Central Meridian is -105.500000 °

Coordinates are relative to: PUCKETT 23C-1
Coordinate System is US State Plane 1927 (Exact solution), Colorado Central 502
Grid Convergence at Surface is: -1.69°

