



410 17th Street, Suite 1500
Denver, CO 80202
(720) 440-6100 phone
(720) 305-0804 fax

Bonanzacrk.com

October 30, 2014

Colorado Oil and Gas Conservation Commission
The Chancery Building
1120 Lincoln Street, Suite 801
Denver, CO 80203

Attn: Matthew Lepore, Director

Re: Notice of 318A.a(4).D Well Proposal
State Antelope 24-1-36XRLNC
SHL: SESW (358' FSL, 1411' FWL) Section 1-T5N-R62W, Weld County, CO
Top of Production: (631' FSL and 1980' FWL) Section 1-T5N-R62W, Weld County, CO
Bottom of Production: (460' FSL and 1980' FEL) Section 36-T6N-R62W, Weld County, CO

Director Lepore:

Bonanza Creek Energy, Inc. (Bonanza) intends to permit, drill and operate the referenced Niobrara Horizontal Well. As defined by Colorado Oil and Gas Conservation Commission (COGCC) Rule 318A.a.(4)D., Bonanza proposes the following wellbore spacing unit:

E/2W/2 Section 1-T5N-R62W, and E/2W/2 Section 36-T6N-R62W, Weld County, CO – containing 320 acres more or less

Bonanza is the sole mineral lease holder in the proposed spacing unit, and no mineral owner notifications were required.

Bonanza respectfully requests that you review the enclosed wellbore spacing unit documentation and approve the referenced APD.

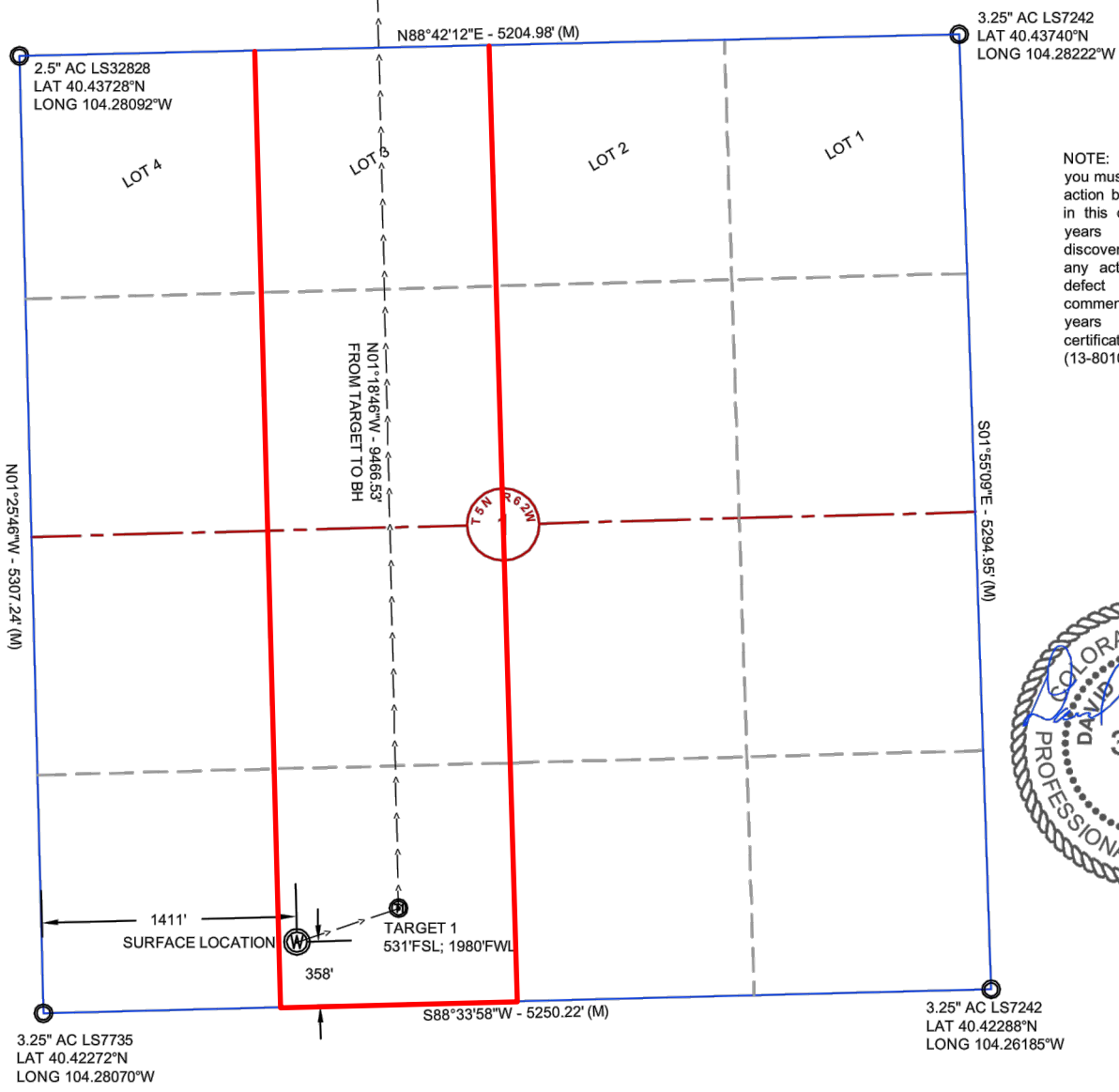
Please do not hesitate to call or email me at (720) 440-6136 or REdelen@Bonanzacrk.com, should you have any questions pertaining to this matter.

Thank you for your cooperation.

Sincerely,

A handwritten signature in blue ink that reads 'Randy Edelen'.

Randy Edelen P.E.
Regulatory Specialist
BONANZA CREEK ENERGY, INC.
BONANZA CREEK ENERGY OPERATING COMPANY, LLC



NOTE: Under Colorado law, you must commence any legal action based upon any defect in this certificate within three years after defect is discovered. In no event, may any action based upon any defect in this survey be commenced more than ten years after date of this certificate shown hereon. (13-80105 C.R.S)

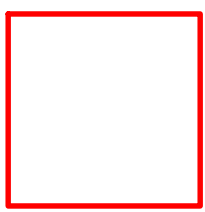


CERTIFICATE OF SURVEYOR

I, David A. Fehring of Lander, Wyoming hereby certify that this well location certificate was prepared from notes taken during an actual survey on SEPTEMBER 21, 2014; and that it correctly shows the drilling location of BONANZA CREEK ENERGY, INC., STATE ANTELOPE 24-1-36XRLNB as staked during said survey. This map does not represent a boundary survey or an improvement location plat and should not be used for the establishment of boundary lines.

NOTES:

- All bearings are GRID based upon the Colorado State Plane Coordinate System, North Zone, NAD83(2011) derived from post-processed static GPS observations.
- Distances are at GROUND
- Vertical Datum is NAVD88 based upon GPS observations
- PDOP value equals 1.3.
- GPS operator: John Stoddard.
- Undisturbed ground elevation at wellhead = 4670.3'
- (M) Measured distance; (R) Record distance



Wellbore Spacing Unit Outline

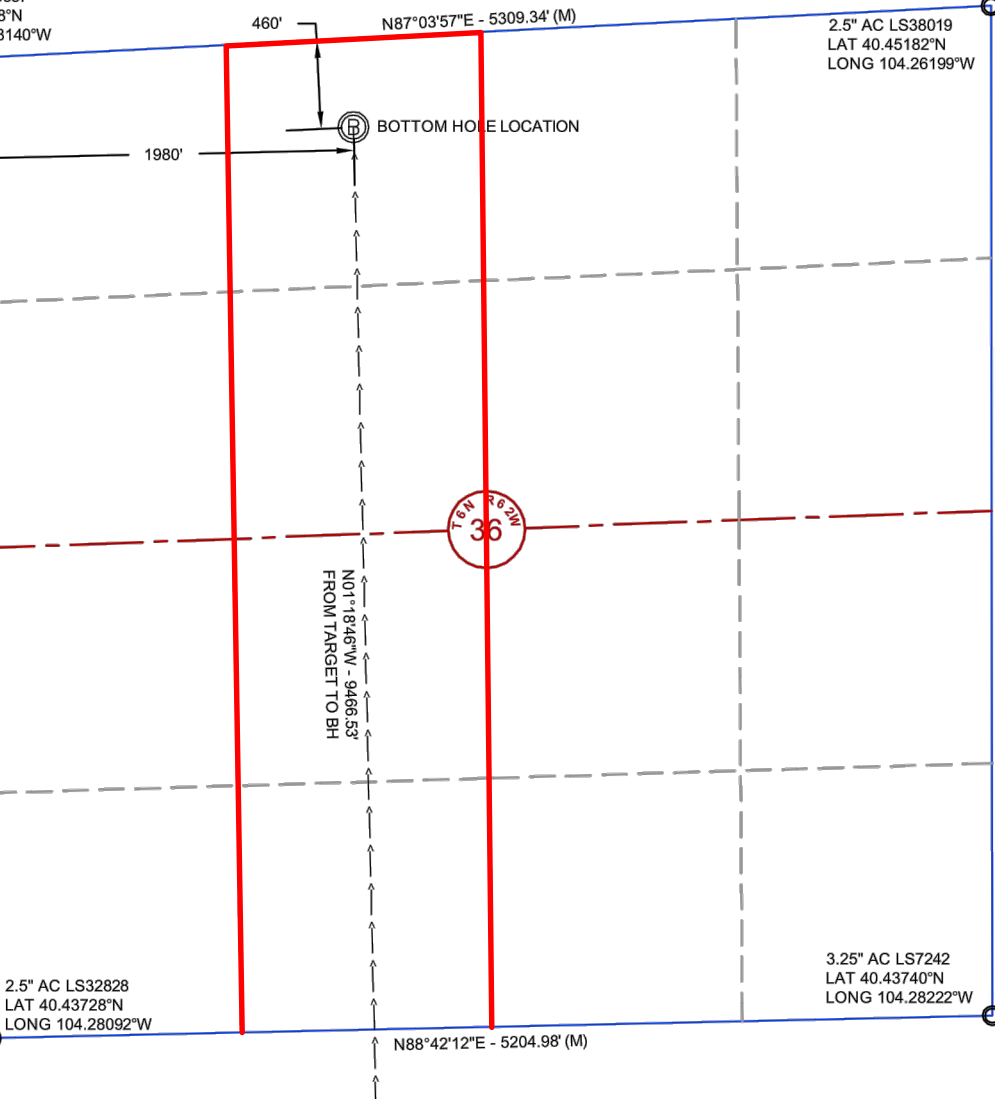


Wellbore Spacing Unit Map
22 October 2014 ksc

State Antelope 24-1-36XRLNB p1
E/2W/2 Sec 1-T5N-R62W 6th PM
E/2W/2 Sec 36-T6N-R62W 6th PM
Weld County, Colorado

2.5" AC LS28657
 LAT 40.45128°N
 LONG 104.28140°W

2.5" AC LS38019
 LAT 40.45182°N
 LONG 104.26199°W



NOTE: Under Colorado law, you must commence any legal action based upon any defect in this certificate within three years after defect is discovered. In no event, may any action based upon any defect in this survey be commenced more than ten years after date of this certificate shown hereon. (13-80105 C.R.S)



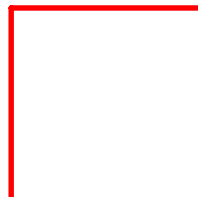
CERTIFICATE OF SURVEYOR

I, David A. Fehring of Lander, Wyoming hereby certify that this well location certificate was prepared from notes taken during an actual survey on SEPTEMBER 21, 2014; and that it correctly shows the drilling location of BONANZA CREEK ENERGY, INC., STATE ANTELOPE 24-1-36XRLNB as staked during said survey. This map does not represent a boundary survey or an improvement location plat and should not be used for the establishment of boundary lines.

NOTES:

- All bearings are GRID based upon the Colorado State Plane Coordinate System, North Zone, NAD83(2011) derived from post-processed static GPS observations.
- Distances are at GROUND
- Vertical Datum is NAVD88 based upon GPS observations
- PDOP value equals 1.3.
- GPS operator: John Stoddard.
- Undisturbed ground elevation at wellhead = 4670.2'

VED DATE 2014-10-13 08:49



Wellbore Spacing Unit Outline



Wellbore Spacing Unit Map
 22 October 2014 ksc

State Antelope 24-1-36XRLNB p2
 E/2W/2 Sec 1-T5N-R62W 6th PM
 E/2W/2 Sec 36-T6N-R62W 6th PM
 Weld County, Colorado