



Digital Cement Bond Log
Gamma Ray
CCL

Company		KERR MCGEE OIL AND GAS	
Well		SEATON 7-18	
Field		WATTENBERG	
County		WELD	
State		COLORADO	
Location:		APL # : 05-123-23605	
SHL: 2180' FNL 1790' FEL		Other Services	
LAT: 40.13990 LONG: -104.70370			
SEC 18 TWP 2N RGE 65W			
SW/NE			
Permanent Datum		GL	Elevation
Log Measured From		KB 14'	4980'
Drilling Measured From		KB	Elevation
			K.B. 4994'
			D.F. 4993'
			G.L. 4980'
Date	2-5-2015		
Run Number	ONE		
Depth Driller	7545'		
Depth Logger	4035'		
Bottom Logged Interval	4026'		
Top Log Interval	SURFACE		
Open Hole Size	4.5		
Type Fluid	WATER		
Density / Viscosity	1.0		
Max. Recorded Temp.	134 DEG F		
Estimated Cement Top	526'		
Time Well Ready	N/A		
Time Logger on Bottom	N/A		
Equipment Number	3812		
Location	GREELEY		
Recorded By	N.POLLOCK		
Witnessed By	FAUSTO		
Borehole Record			
Run Number	Bit	From	To
ONE			
TWO			
Tubing Record			
Casing Record	Size	Wgt/Ft	Top
Surface String	8.58	24#	SURFACE
Prot. String			
Production String	4.5	11.6#	SURFACE
Liner			

<<< Fold Here >>>

All interpretations are opinions based on inferences from electrical or other measurements and we cannot and do not guarantee the accuracy or correctness of any interpretation, and we shall not, except in the case of gross or willful negligence on our part, be liable or responsible for any loss, costs, damages, or expenses incurred or sustained by anyone resulting from any interpretation made by any of our officers, agents or employees. These interpretations are also subject to our general terms and conditions set out in our current Price Schedule.

Comments

FREE PIPE CALIBRATION AT 2910' (81mV)

RAN C.B.L. TO VERIFY CEMENTN TOP.

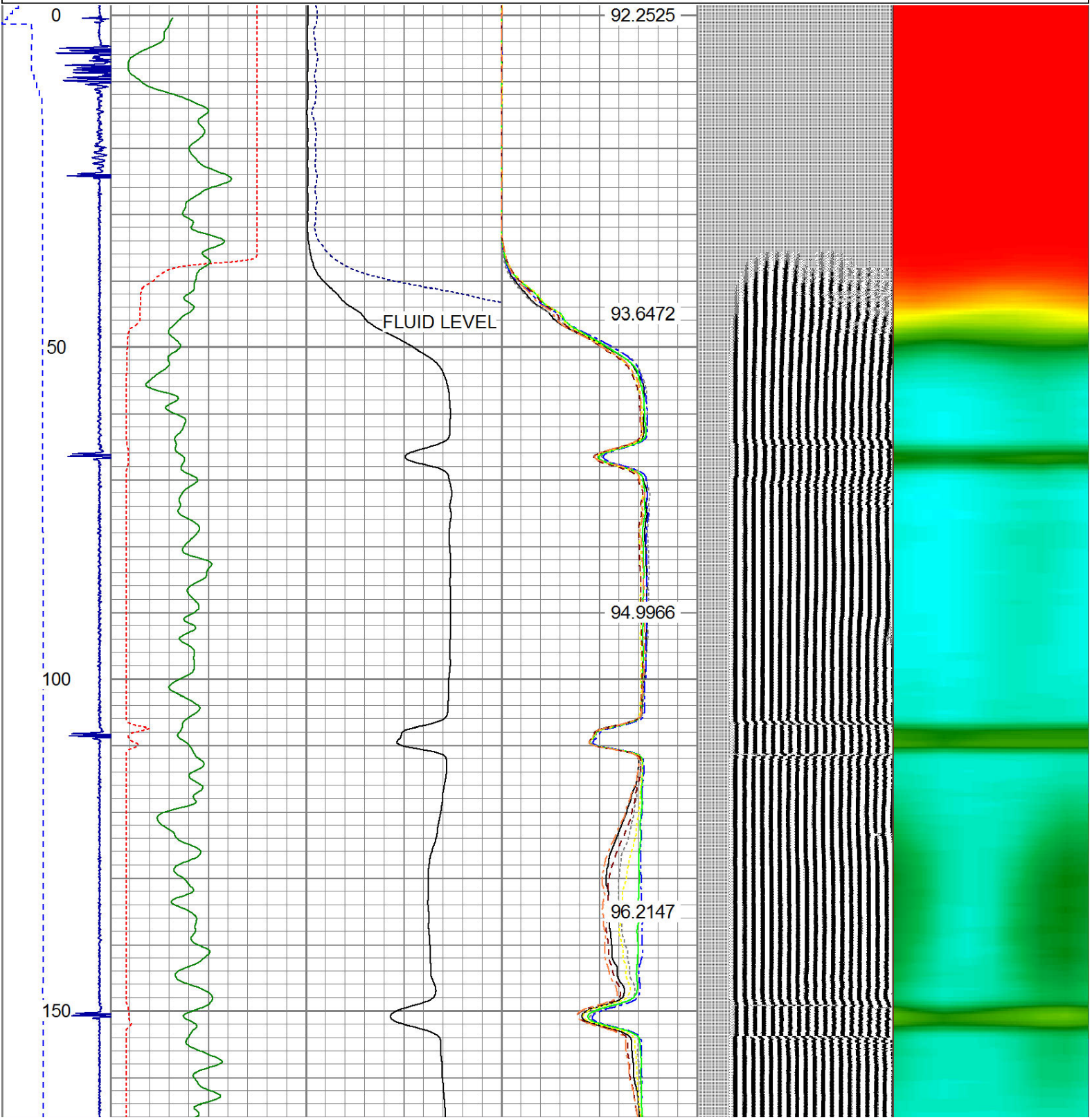
THANK YOU FOR USING WARRIOR ENERGY SERVICES!

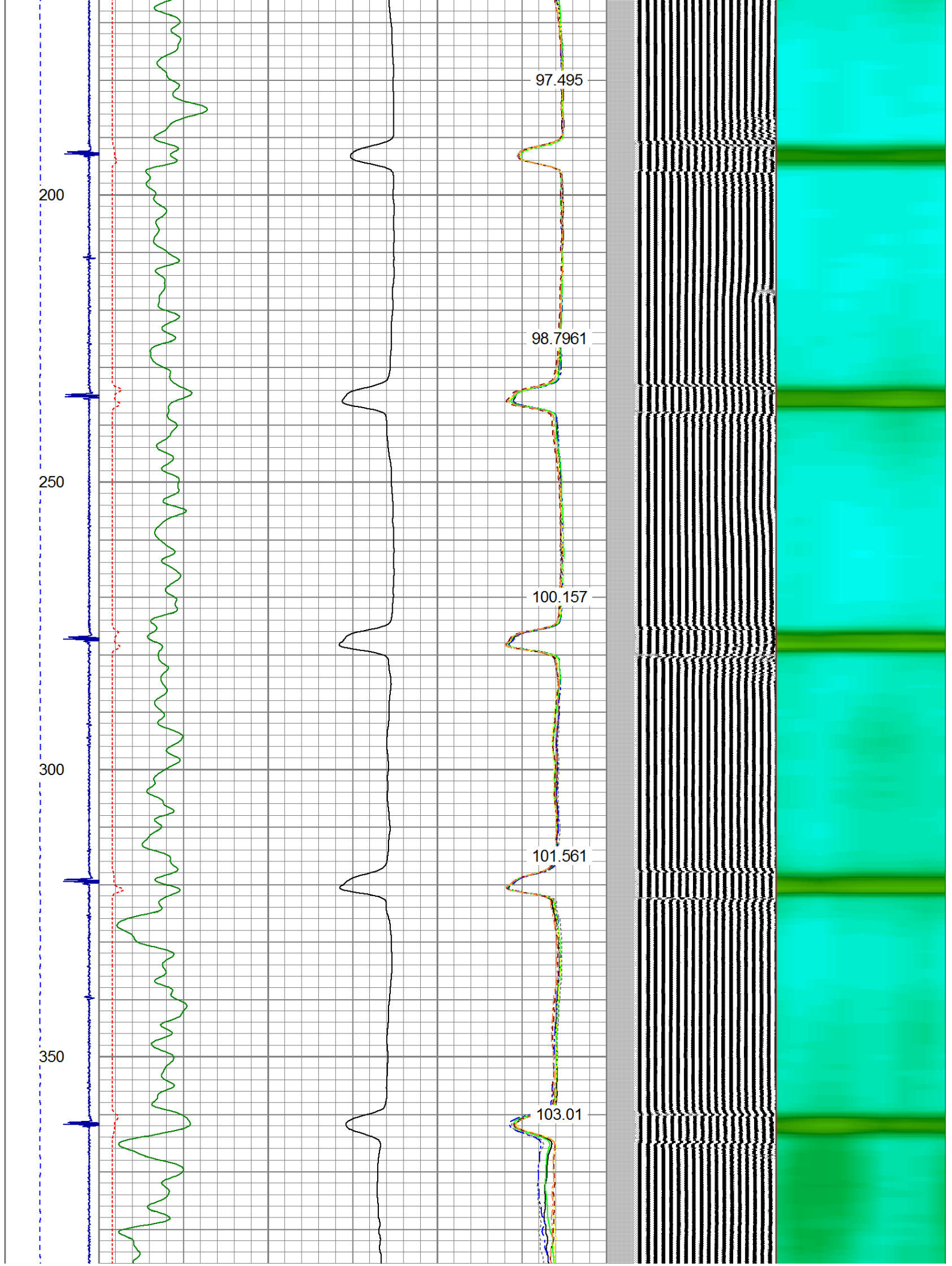
Sensor	Offset (ft)	Schematic	Description	Len (ft)	OD (in)	Wt (lb)
CENT	19.08					

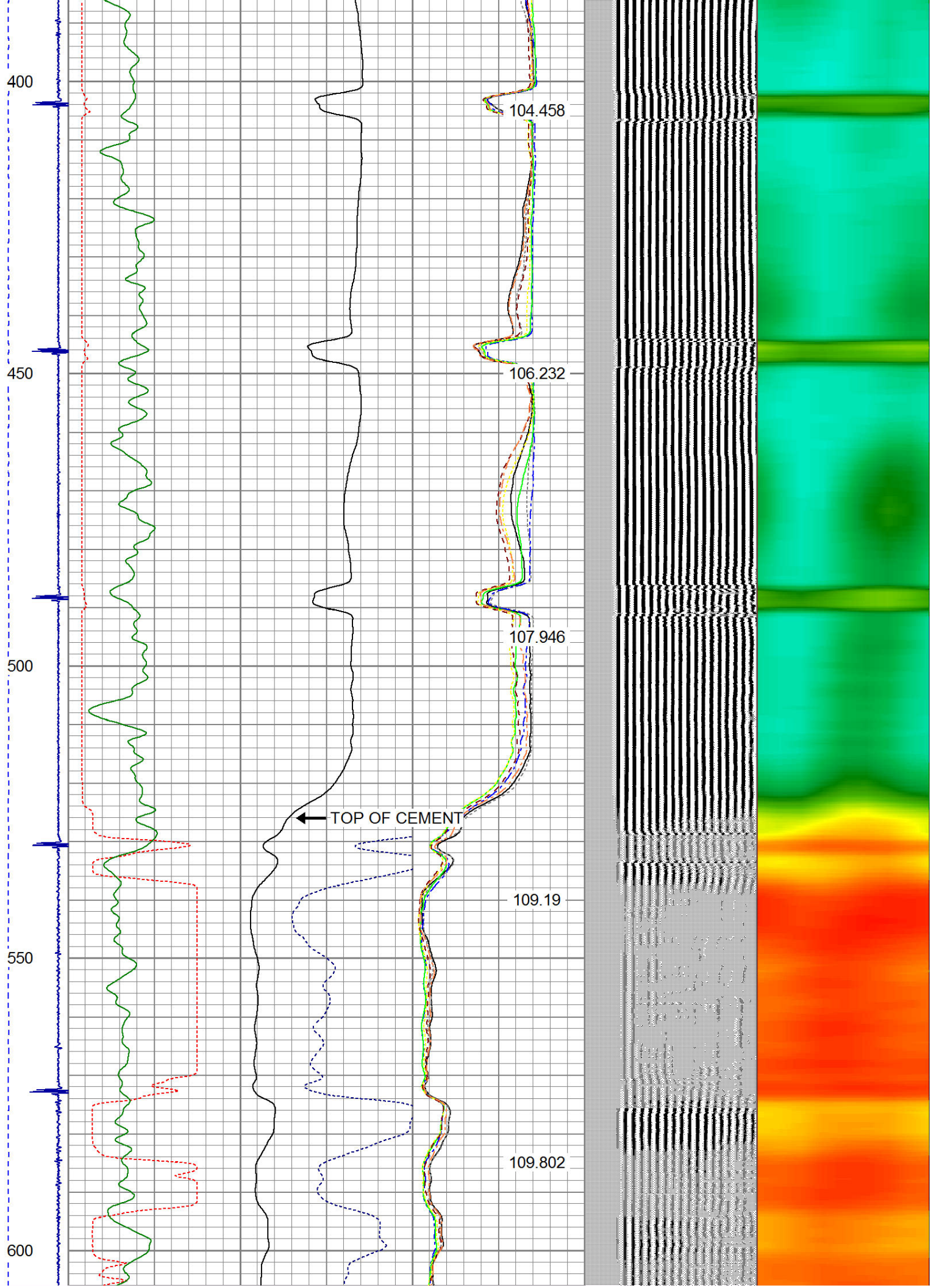
			PTS275	2.83	2.75	
HEADVOLT	16.25					
RBT	16.25					
IntTemp	14.83					
WVF3FT	11.58		RBT-Probe (Base)	8.92	2.75	90.00
WVFCAL	11.58		Probe Radii Bond Tool with Digital Telemetry			
WVFS1	11.58					
WVFS2	11.58					
WVFS3	11.58					
WVFS4	11.58					
WVFS5	11.58					
WVFS6	11.58					
WVFS7	11.58					
WVFS8	11.58					
WVF5FT	10.58					
CNLSC	6.00		CNT-Probe_B (275)	3.00	2.75	40.00
CNSSC	5.17		6 bow centralizer			
GR	4.33					
CCL	3.64					
			GR-Probe (275)	4.33	2.75	30.00
			Probe 2.75"			
GR	0.90					
Dataset: seaton 7-18.db: field/well/run1/pass4 Total Length: 19.08 ft Total Weight: 160.00 lb O.D. 2.75 in						

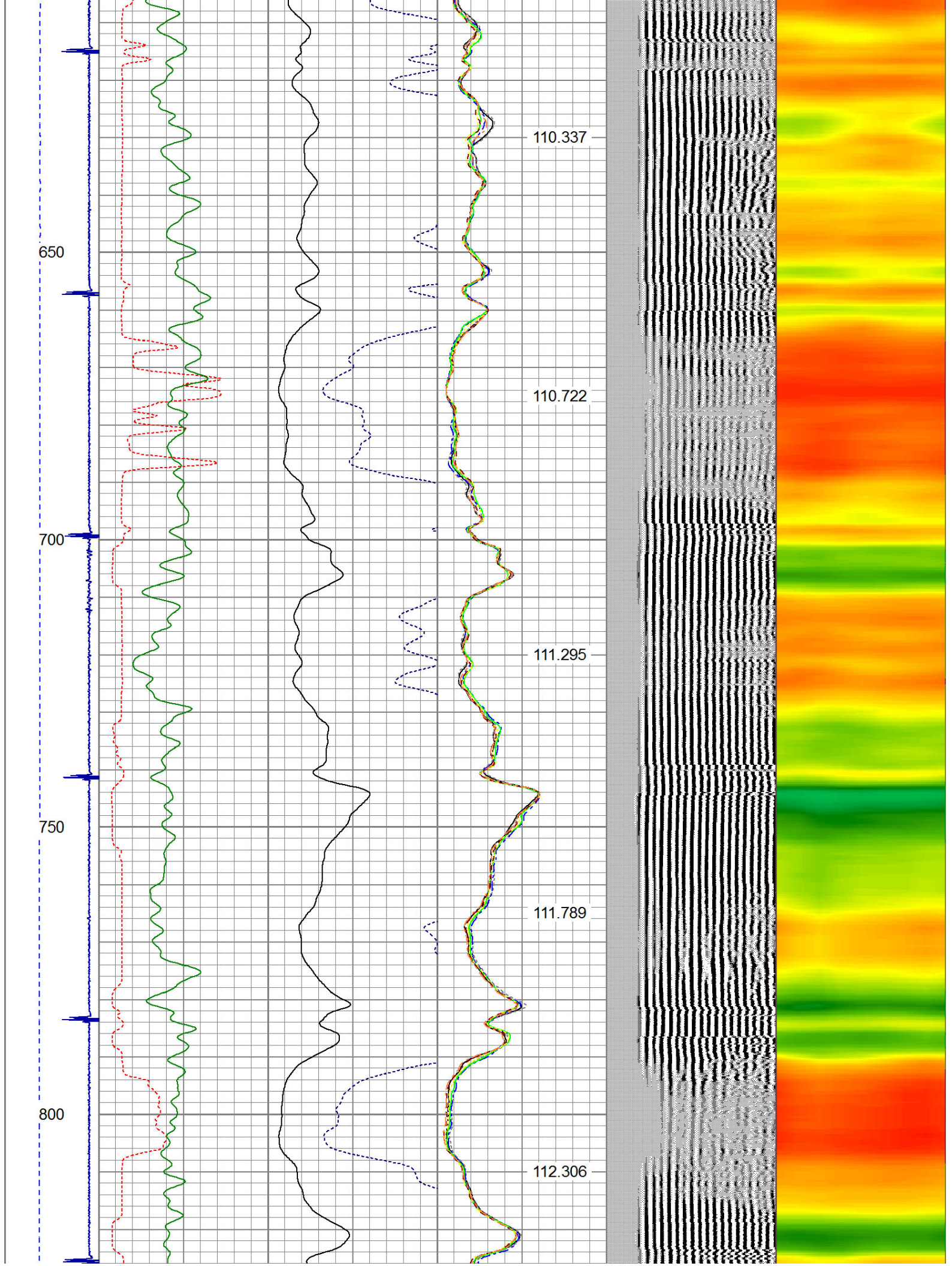
Dataset Creation: Thu Feb 05 07:46:34 2015 by Log 7.0 B1
Charted by: Depth in Feet scaled 1:240

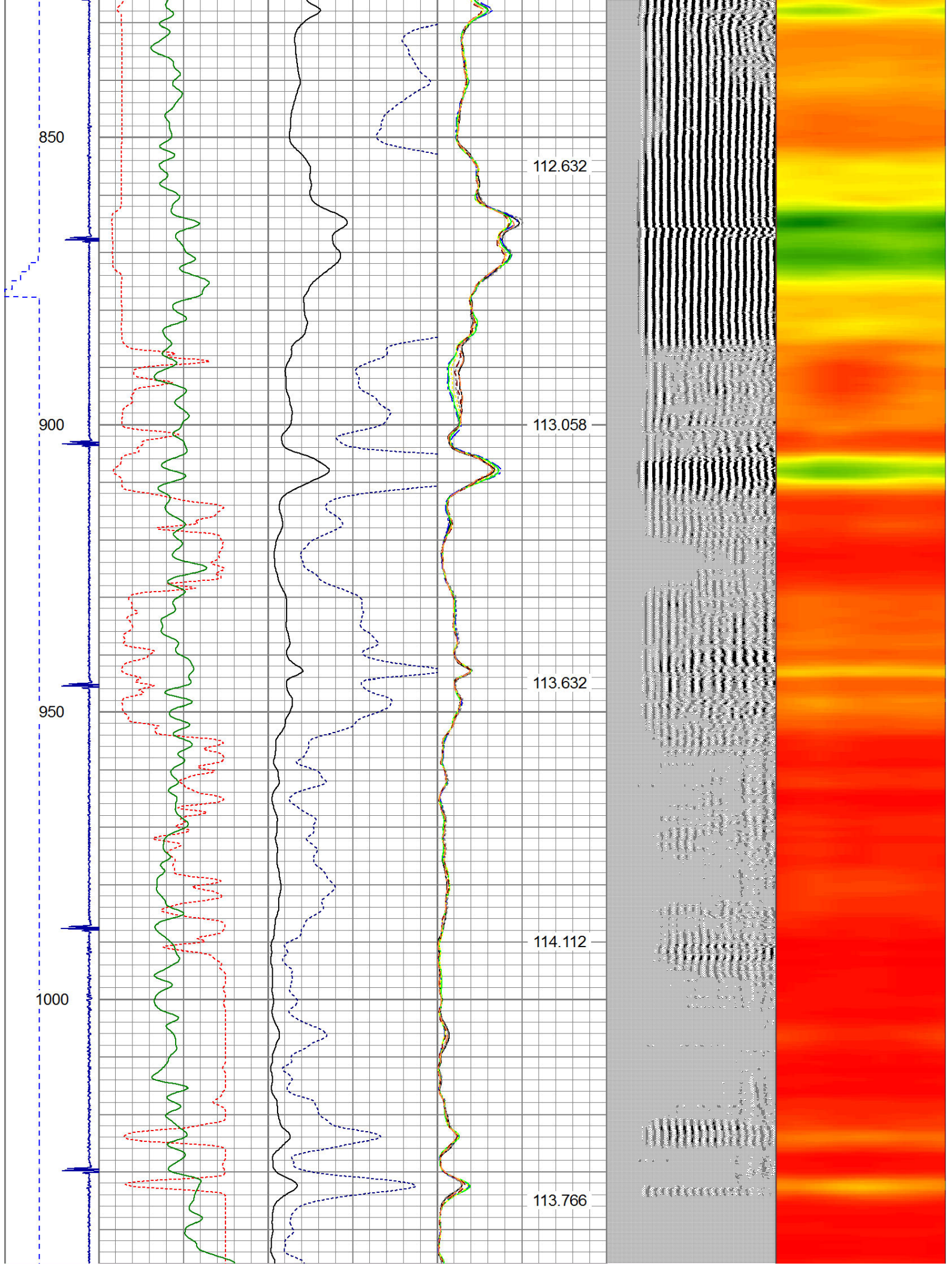
-9	CCL	1	200	TT (usec)	1000	0	AMP (mV)	100	0	AMPS1	100	200	VDL	1200	1	Cement Map	8
LSPD		0	GR (cps)		200	0	AMPx5 (mV)		20	0	AMPS2	100			1		
(ft/min)		200	GR (cps)		400					0	AMPS4	100					
0	250									0	AMPS5	100					
										0	AMPS6	100					
										0	AMPS7	100					
										0	AMPS8	100					
												IntTemp					
												(degF)					

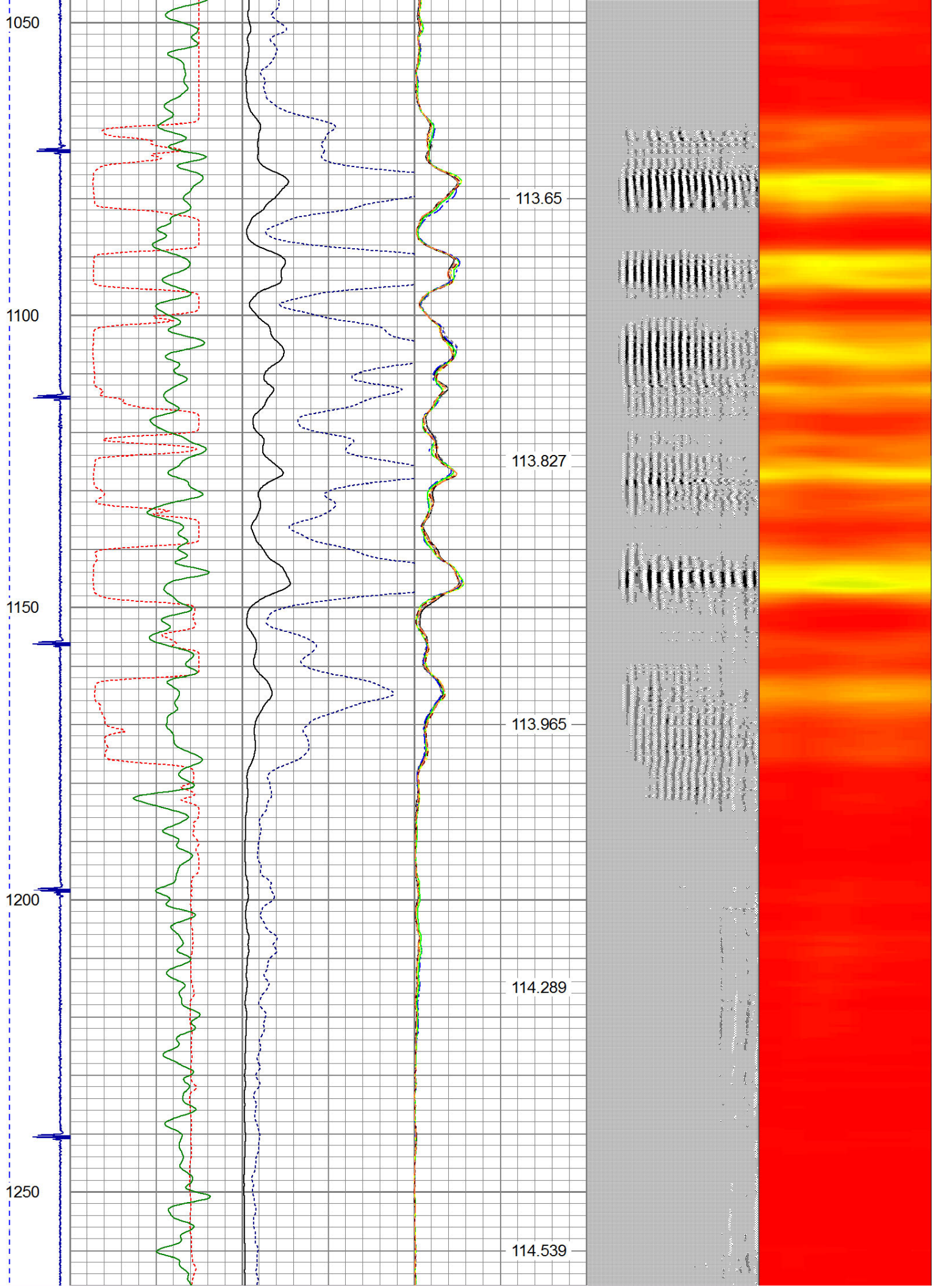












1300

1350

1400

1450

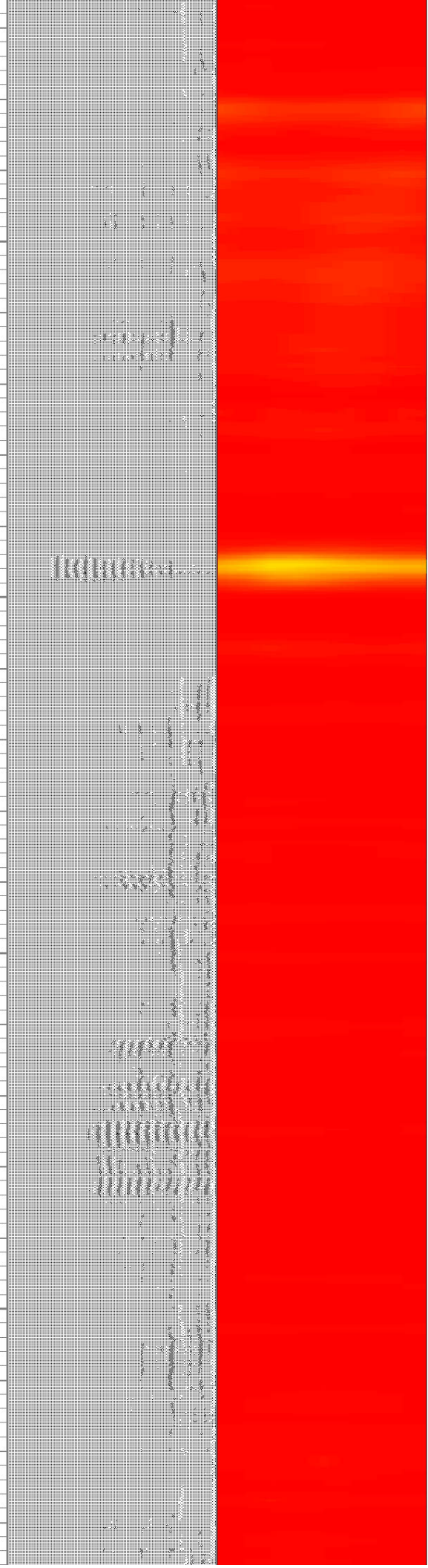
114.794

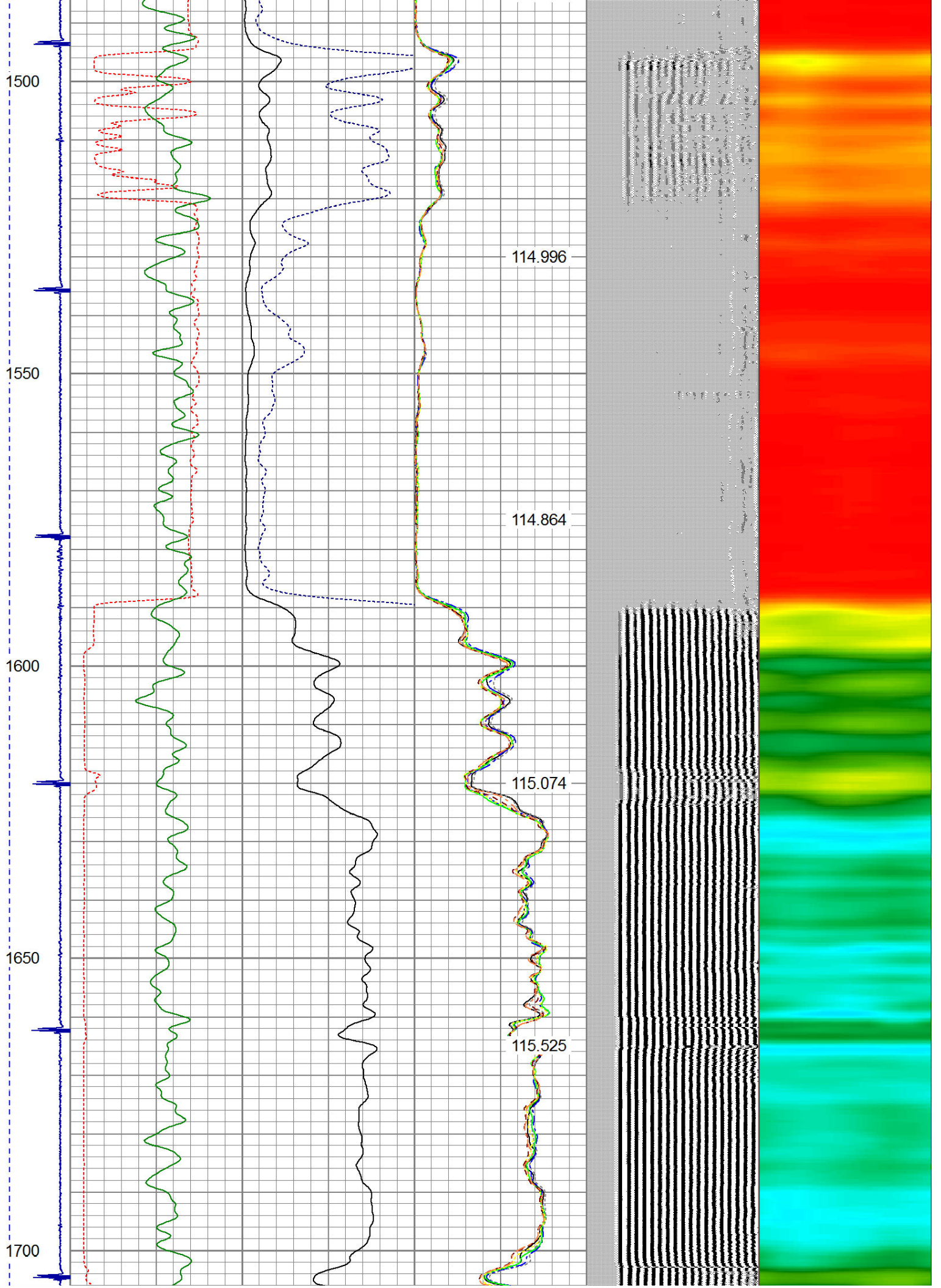
114.993

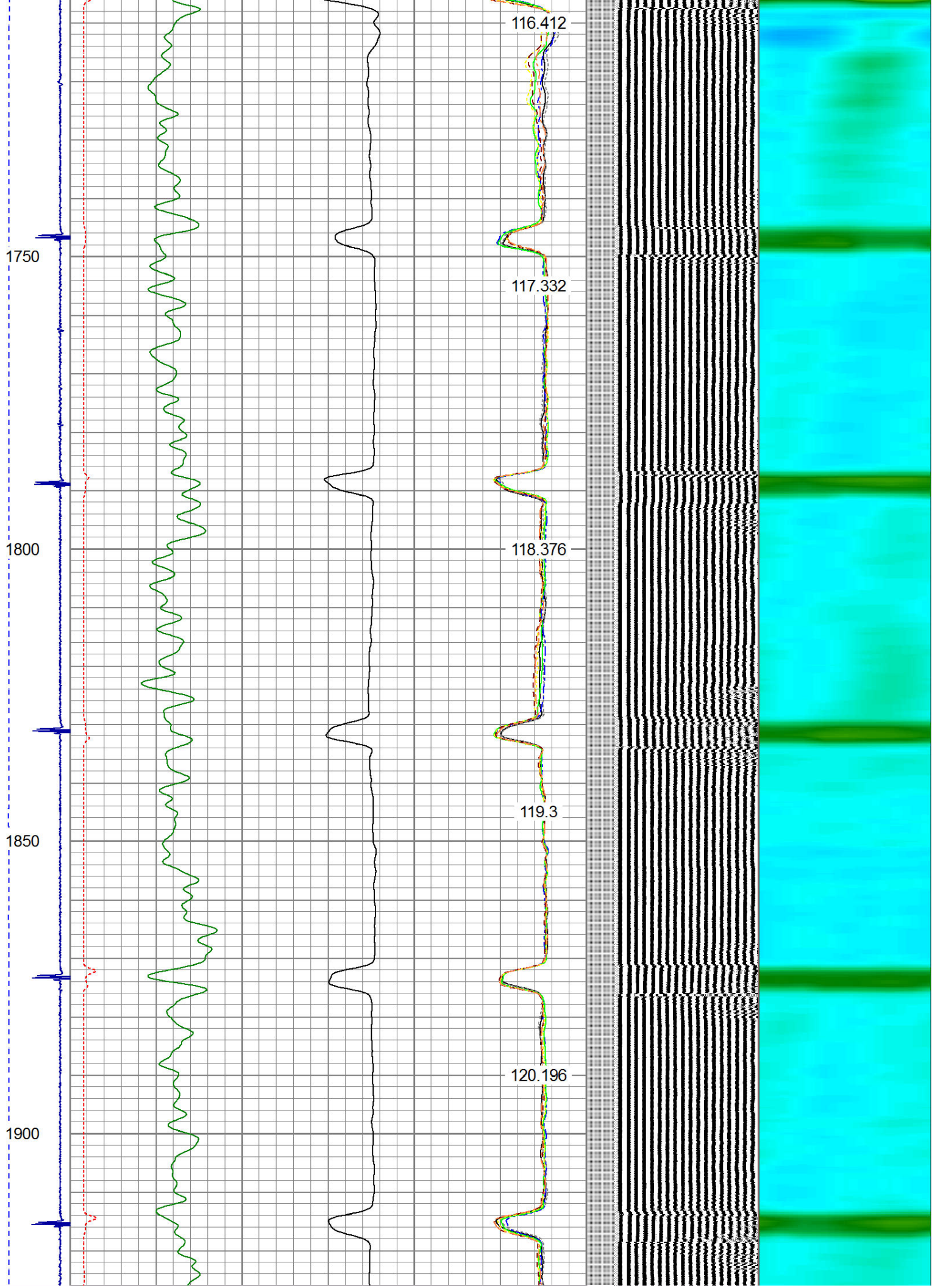
114.97

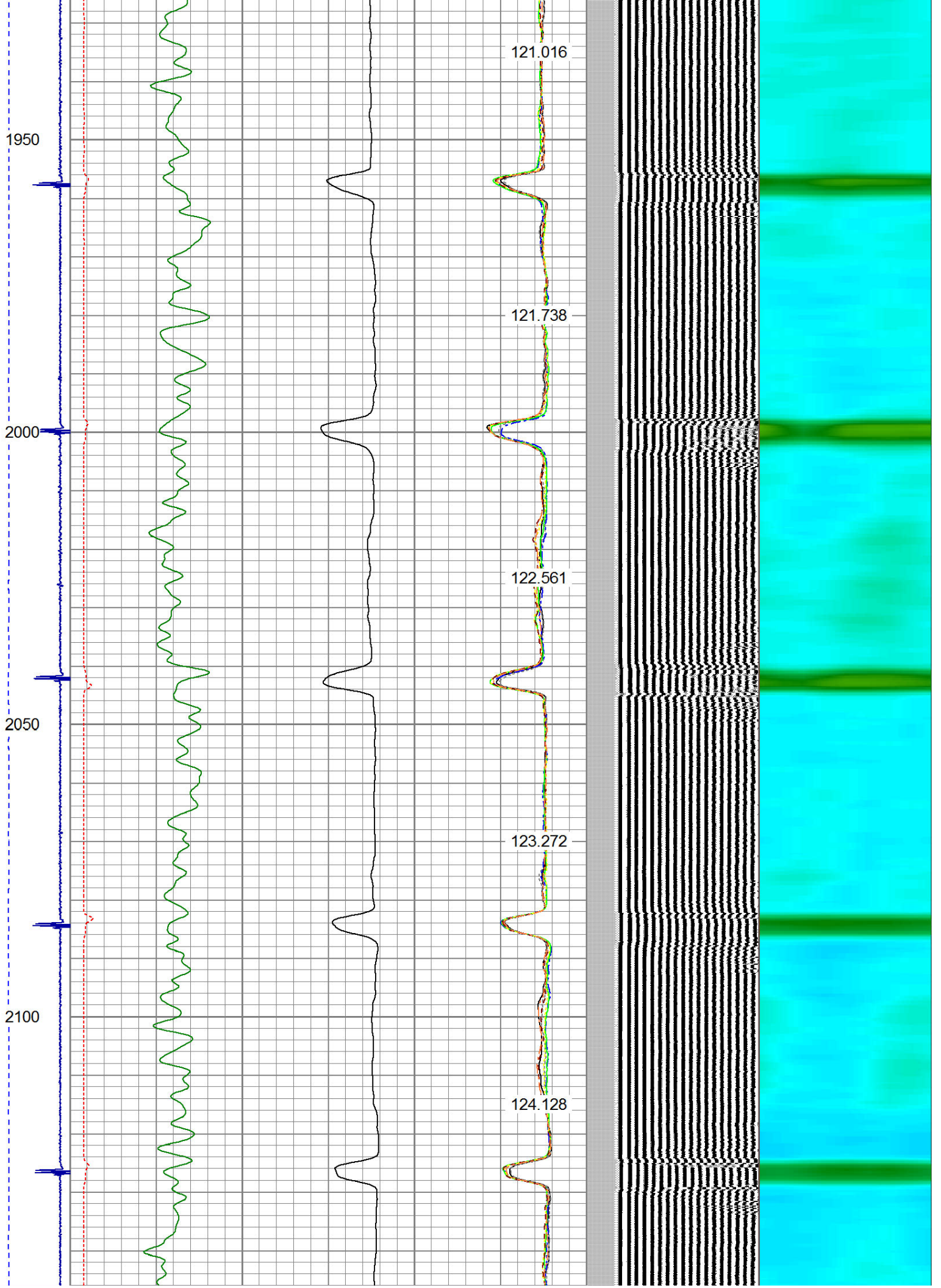
114.949

114.969









2150

2200

2250

2300

2350

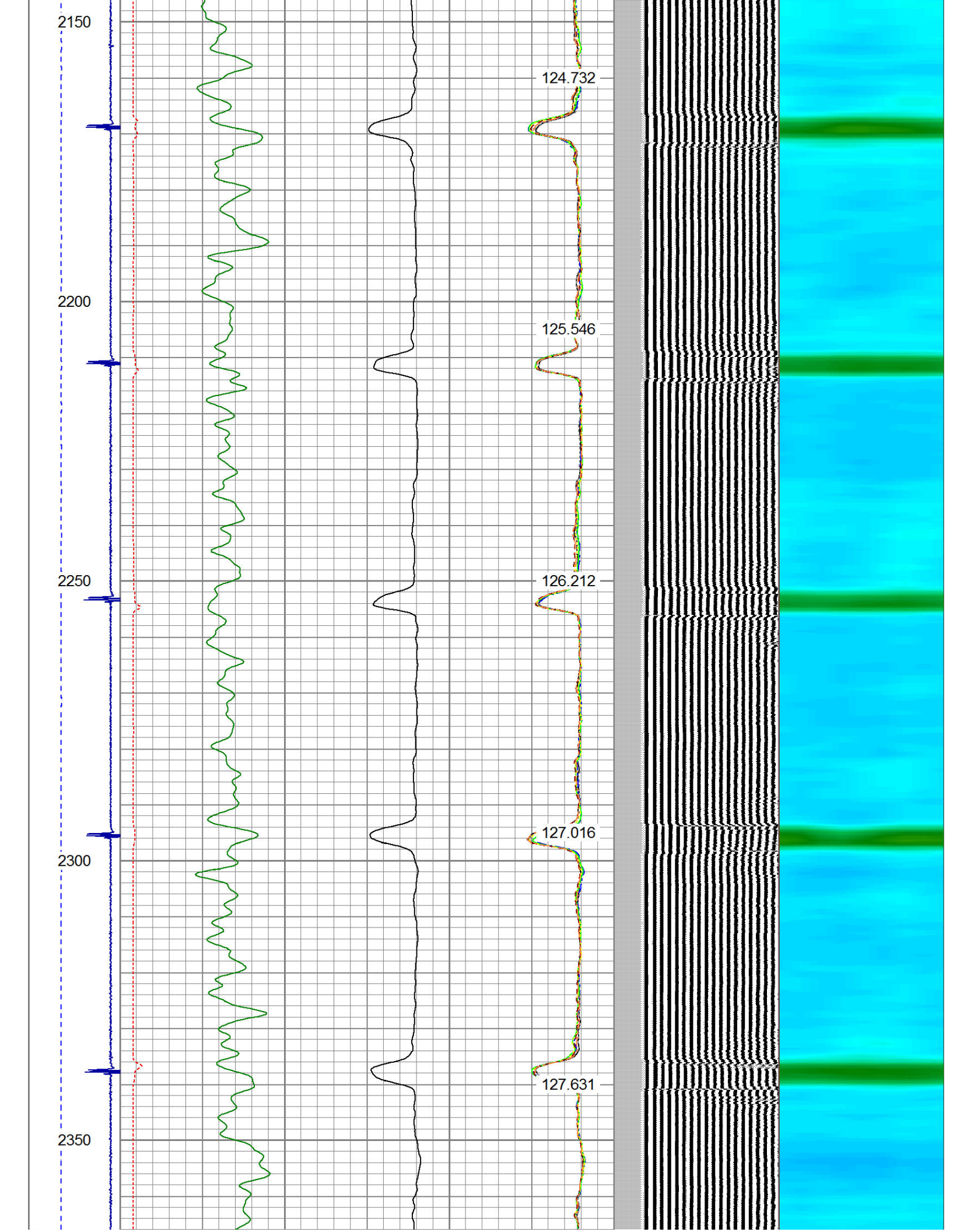
124.732

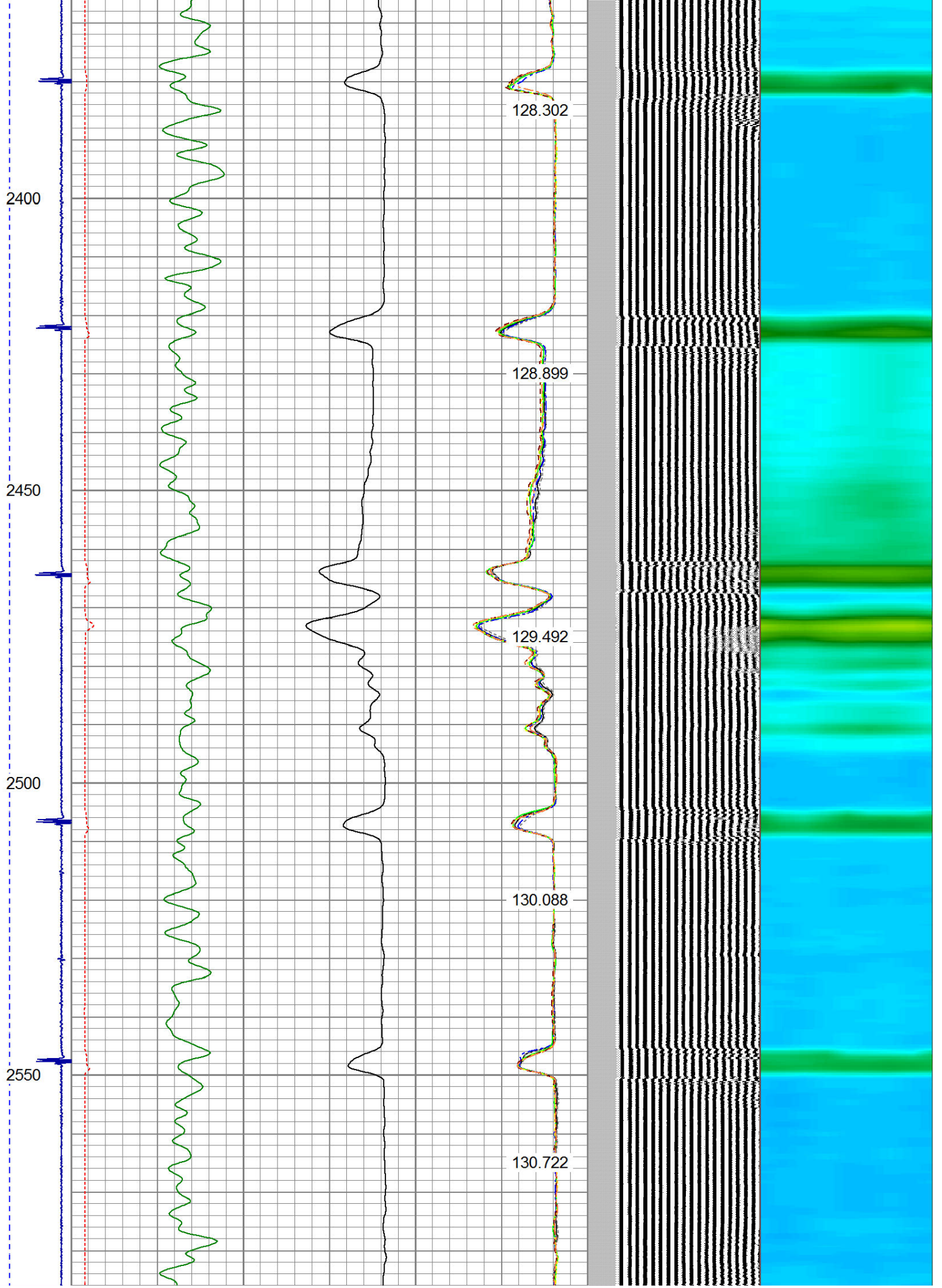
125.546

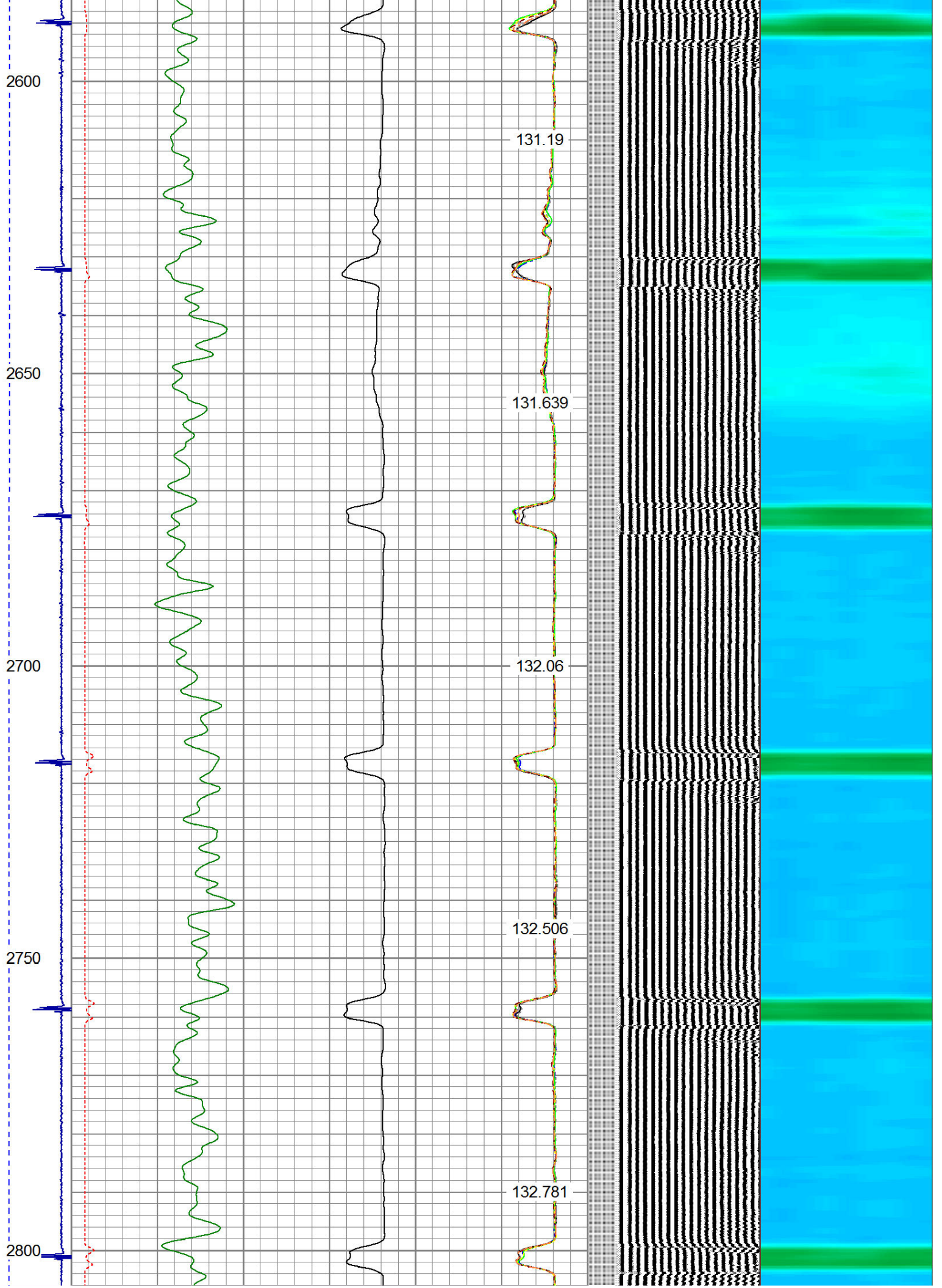
126.212

127.016

127.631







2850

2900

2950

3000

FREE PIPE CAL(81mV)

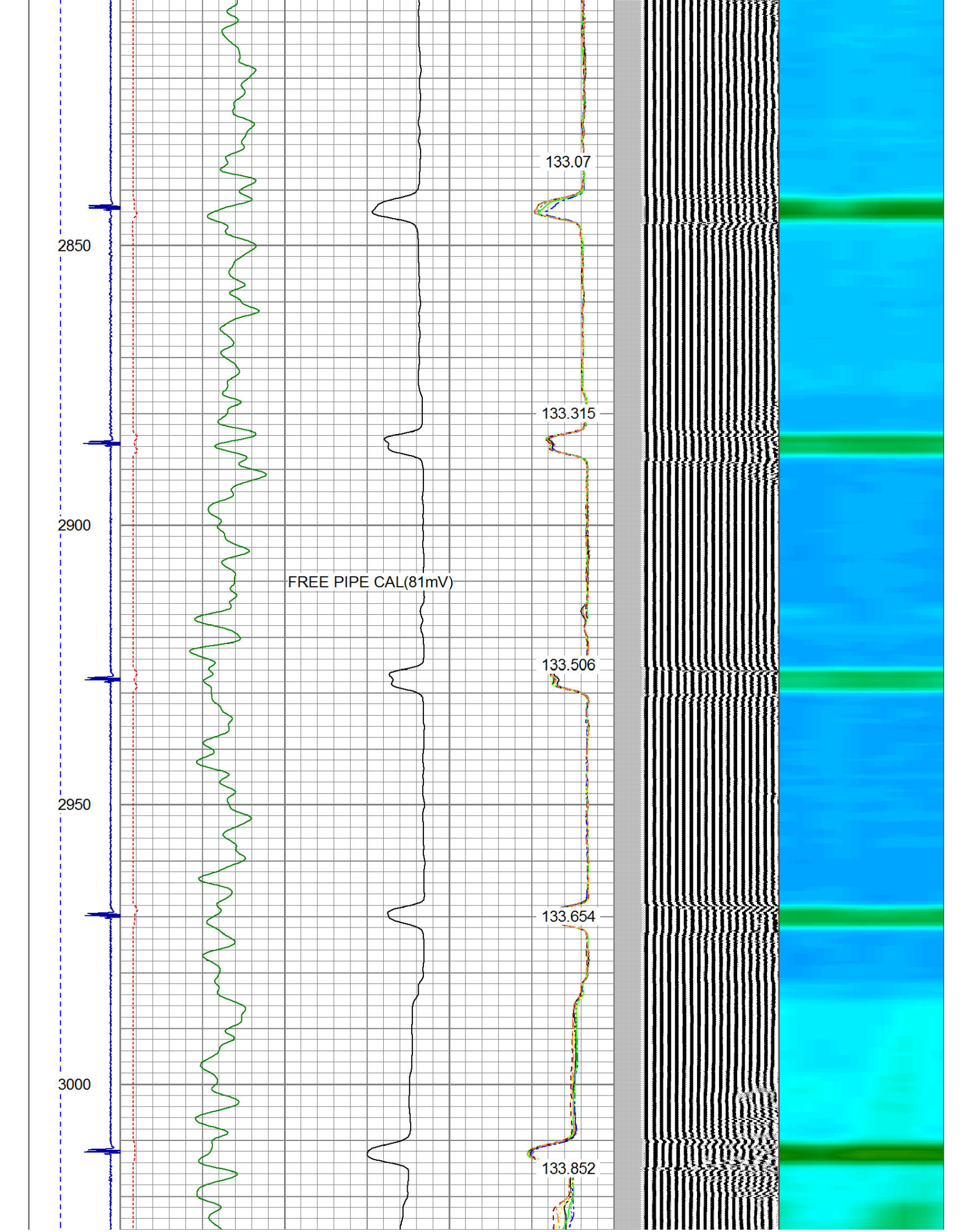
133.07

133.315

133.506

133.654

133.852



3050

3100

3150

3200

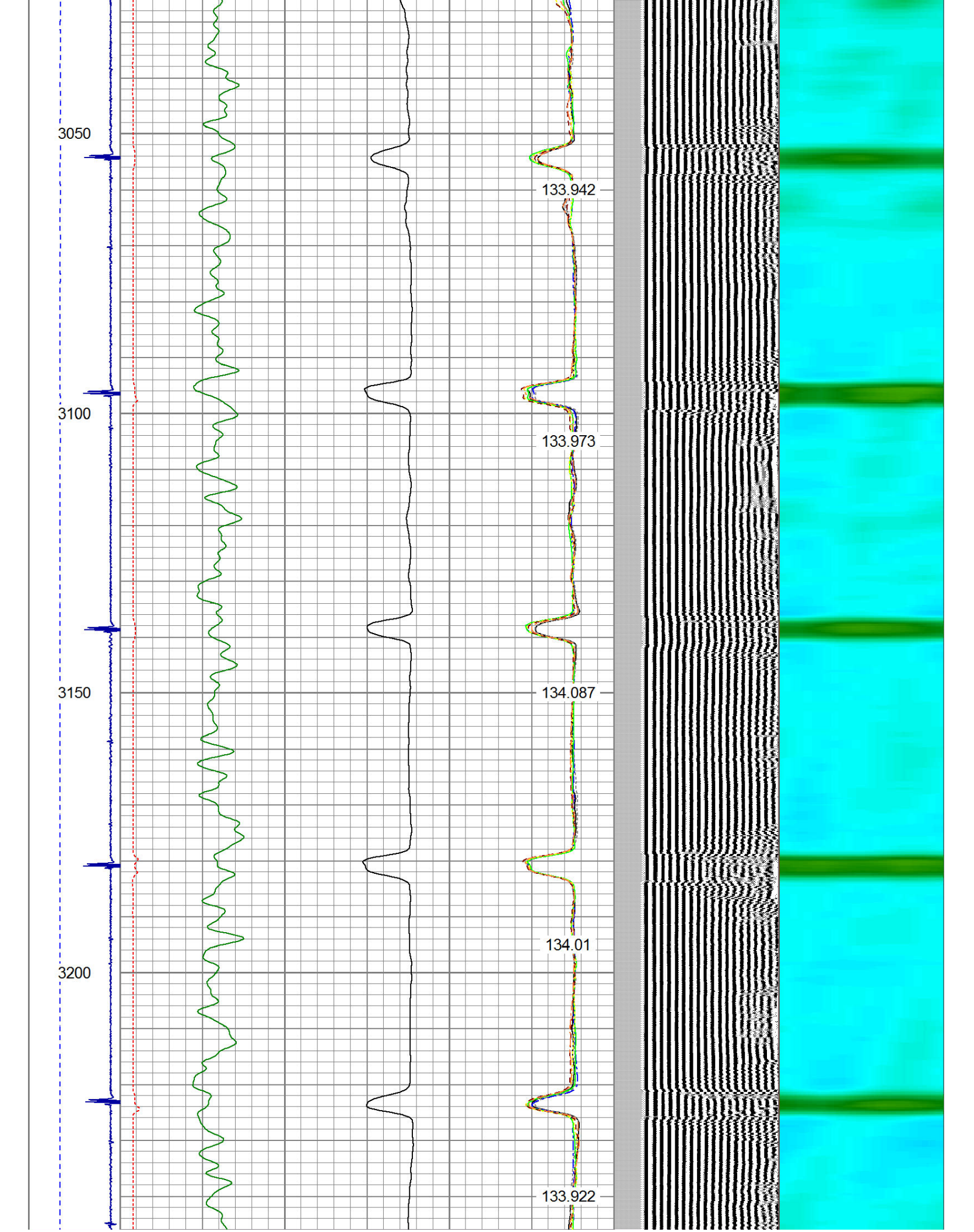
133.942

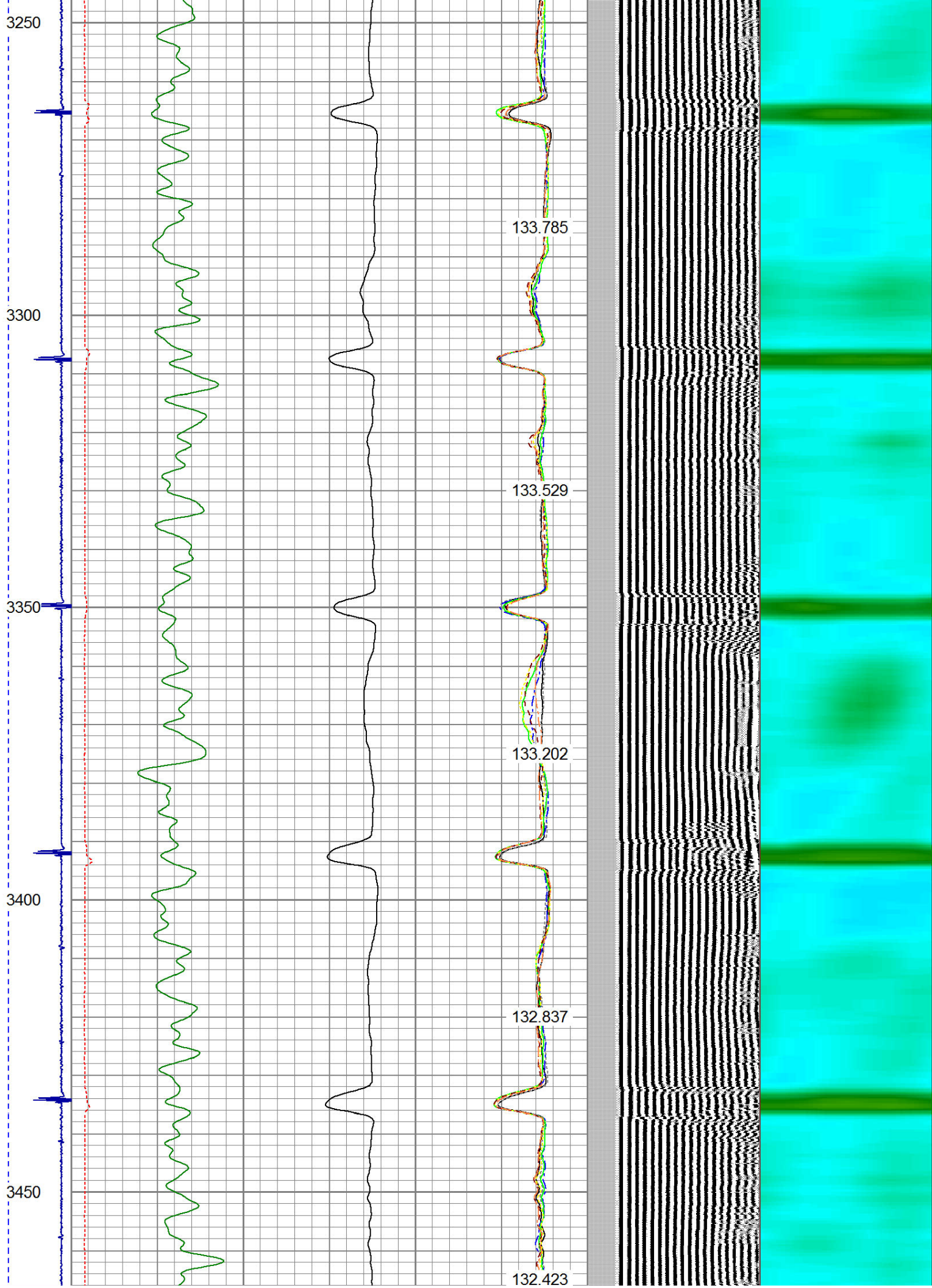
133.973

134.087

134.01

133.922





3500

3550

3600

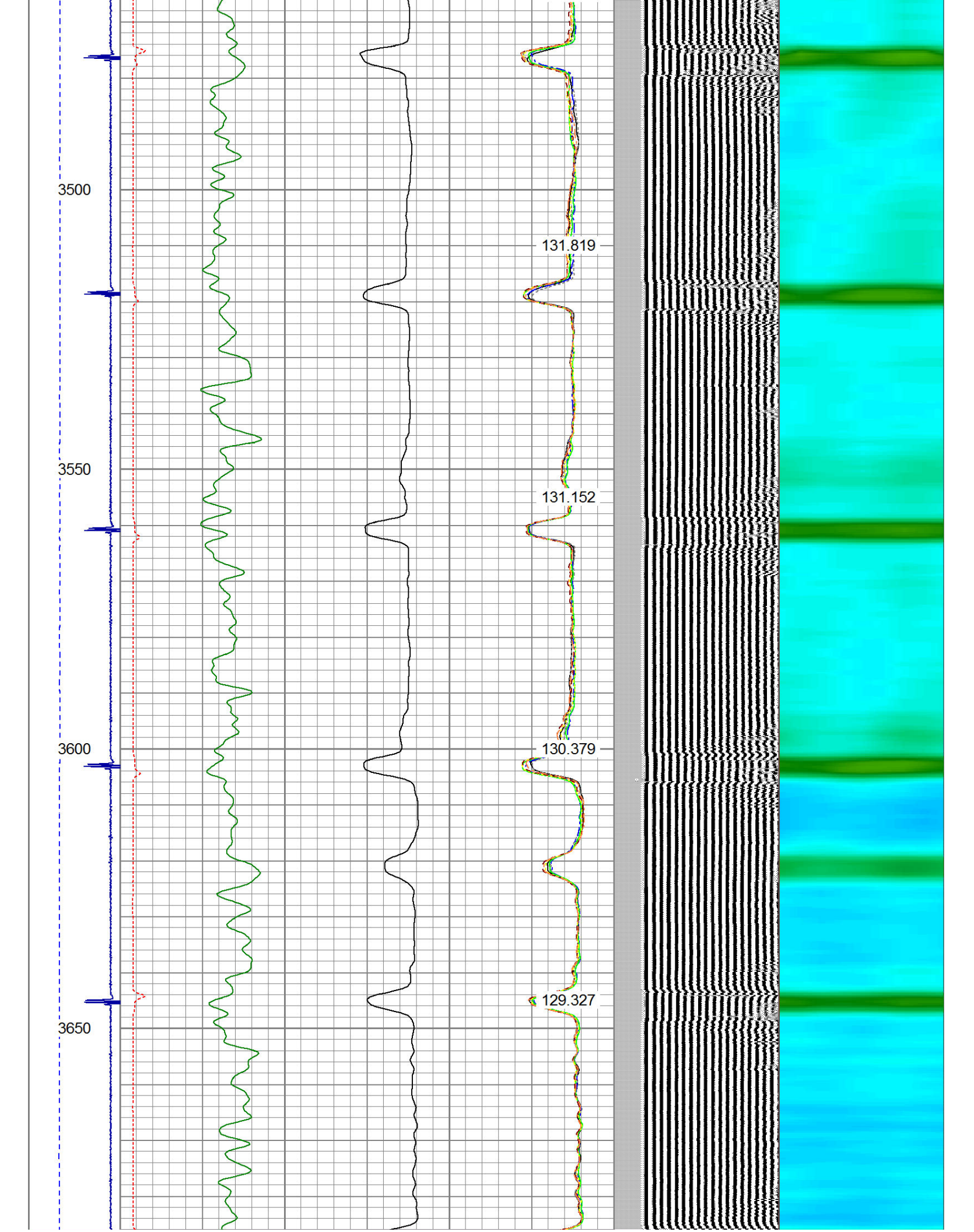
3650

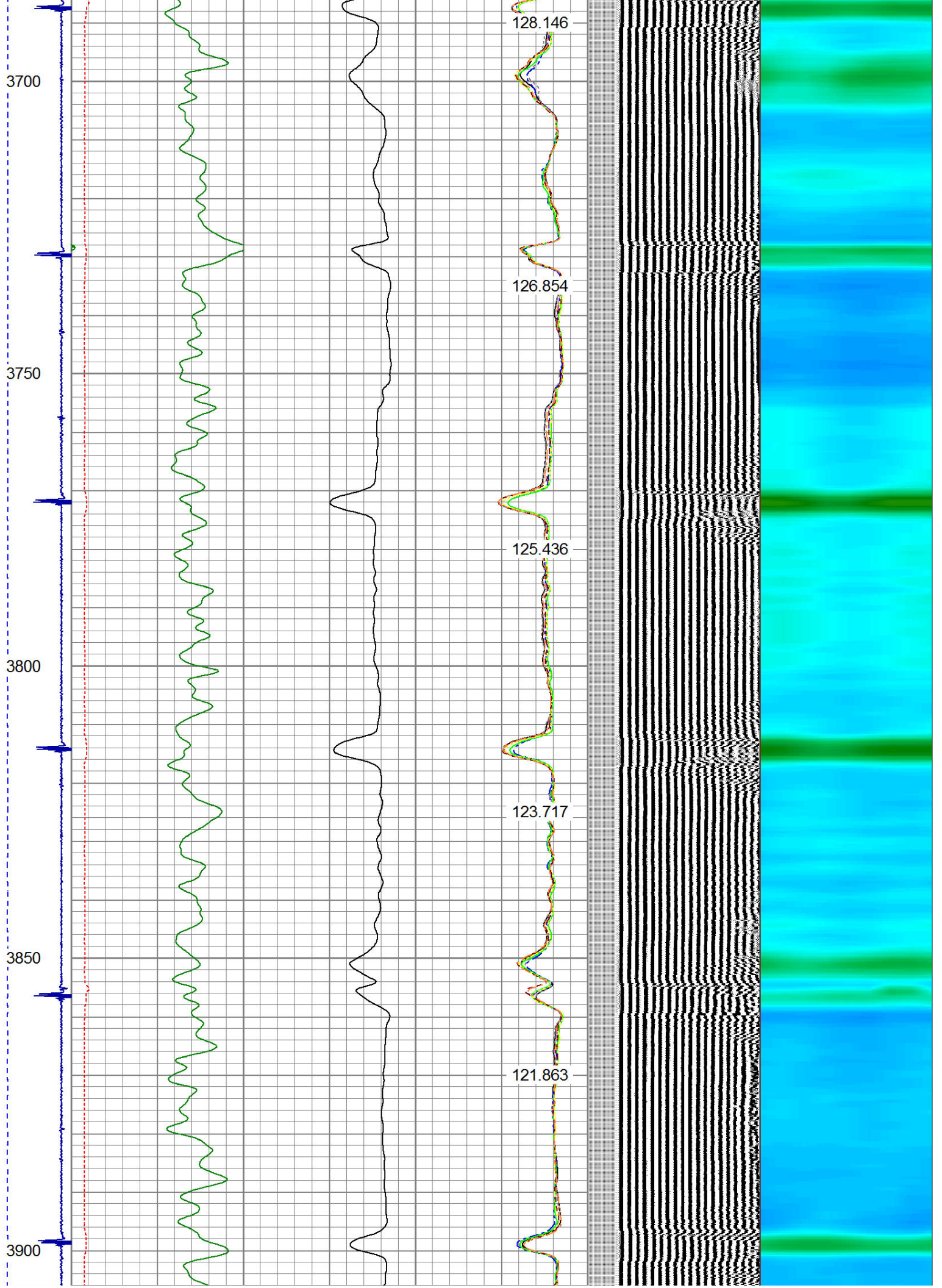
131.819

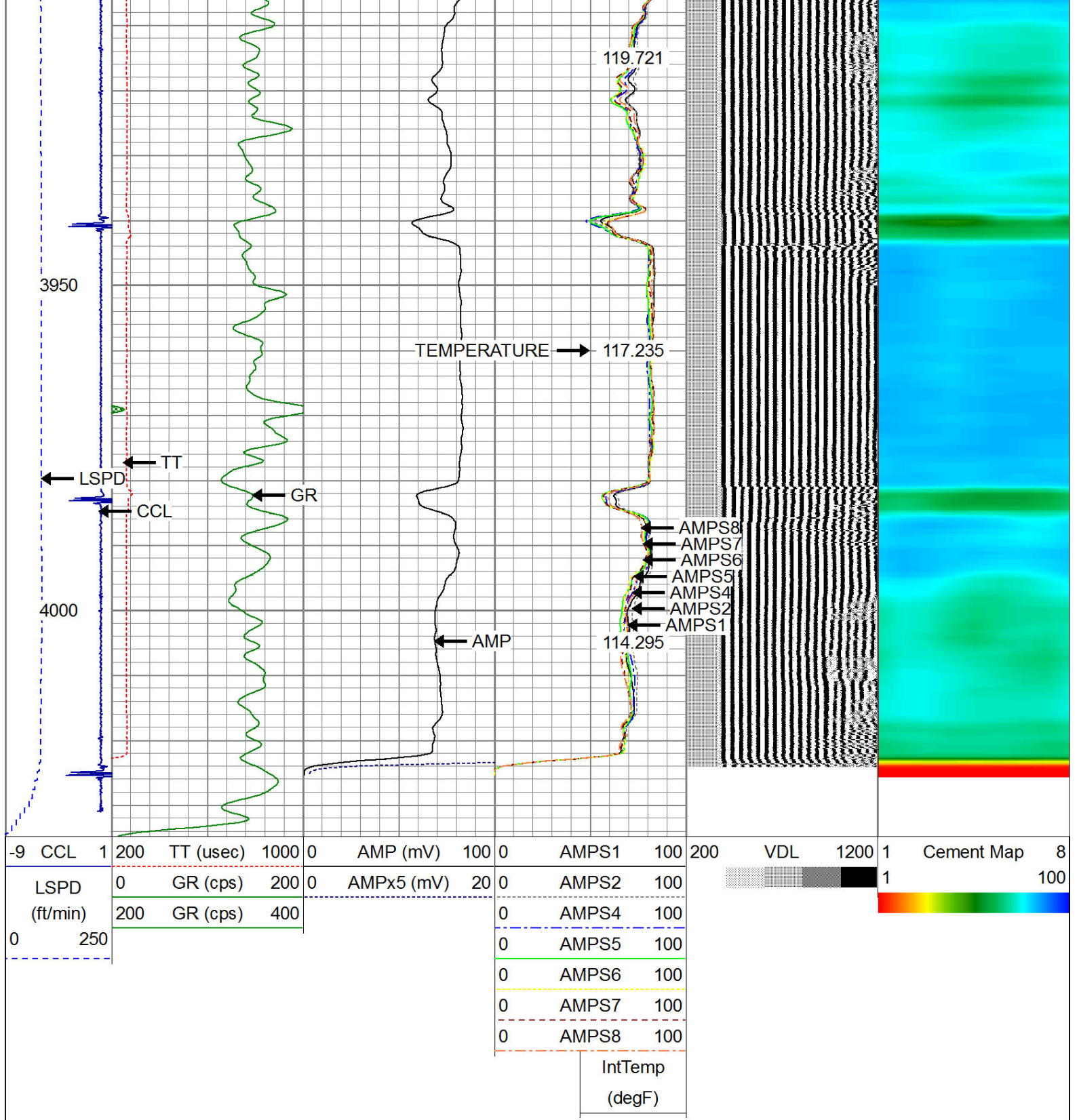
131.152

130.379

129.327







WARRIOR
ENERGY SERVICES

Company KERR MCGEE OIL AND GAS
Well SEATON 7-18
Field WATTENBERG
County WELD
State COLORADO