

Resolute E25-63-1HN TVD 1" : 100'

Company: Noble Energy Inc

Well Name: Resolute E25-63-1HN

API: 05-123-38155

Rig Id: Precision 828

State: Colorado

County/Parish: Weld

Country: USA

Survey Company: Ensign Directional

Job number: 207-P828-33

Company Man 1 Gary Stapleton

Directional Driller 1 Tyler Batchelder

Directional Driller 2 Matt Mason

MWD 1 Nick Jones

MWD 2 Damien Hunter

Log measurements: Gamma

Depth measured from: KB

Maximum temperature:

Depth Date

Start: 59.4 ft 6/8/2014

End: 11387 ft 6/16/2014

Casing Depth Size

Surface: 58.4 9.625

Intermediate: 7263 7

Mud Type: Water Based

Density:

Viscosity:

Rm:

Rmf:

Rmc:

Elevations

KB: 4692

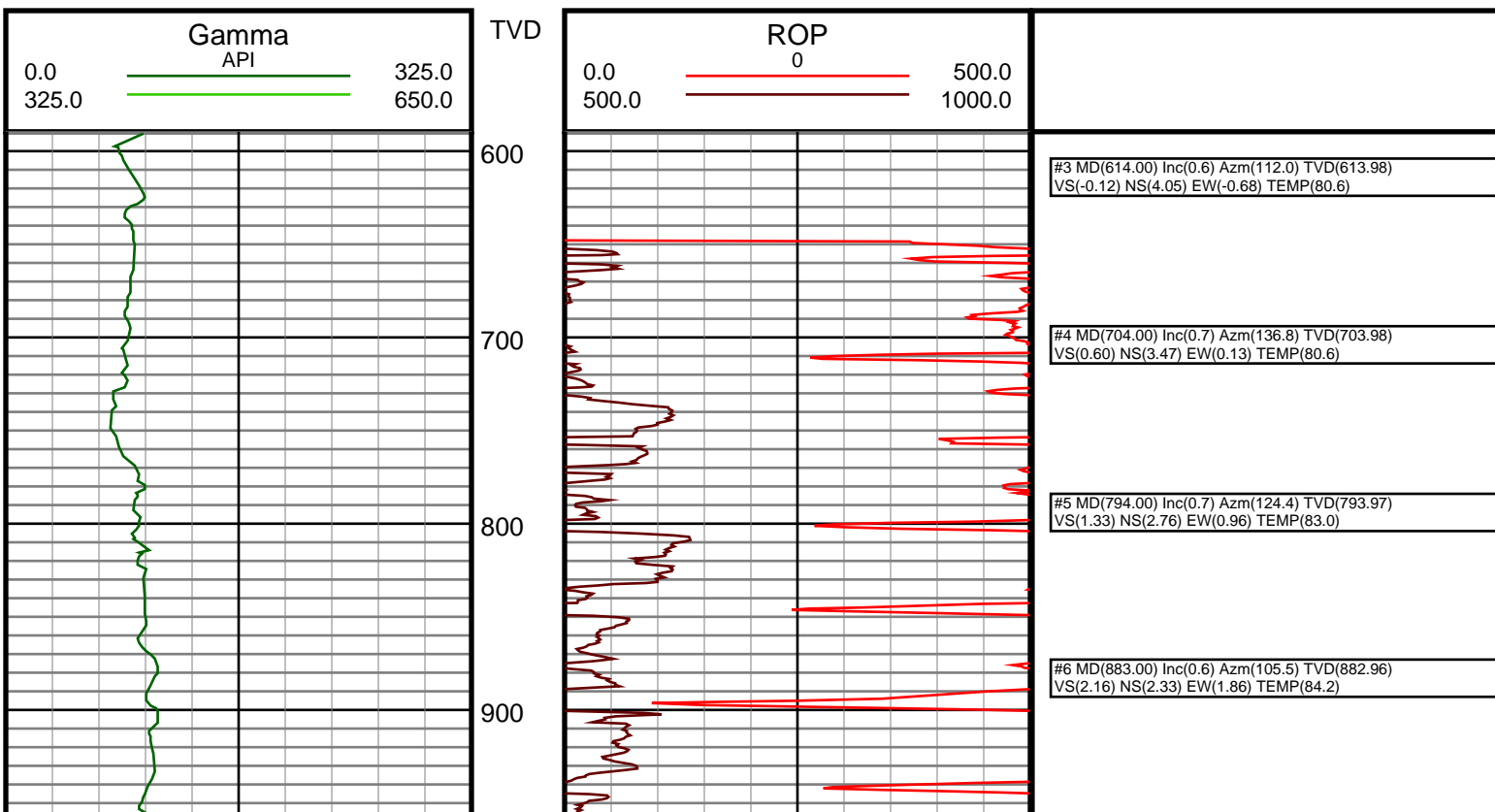
GL: 4676

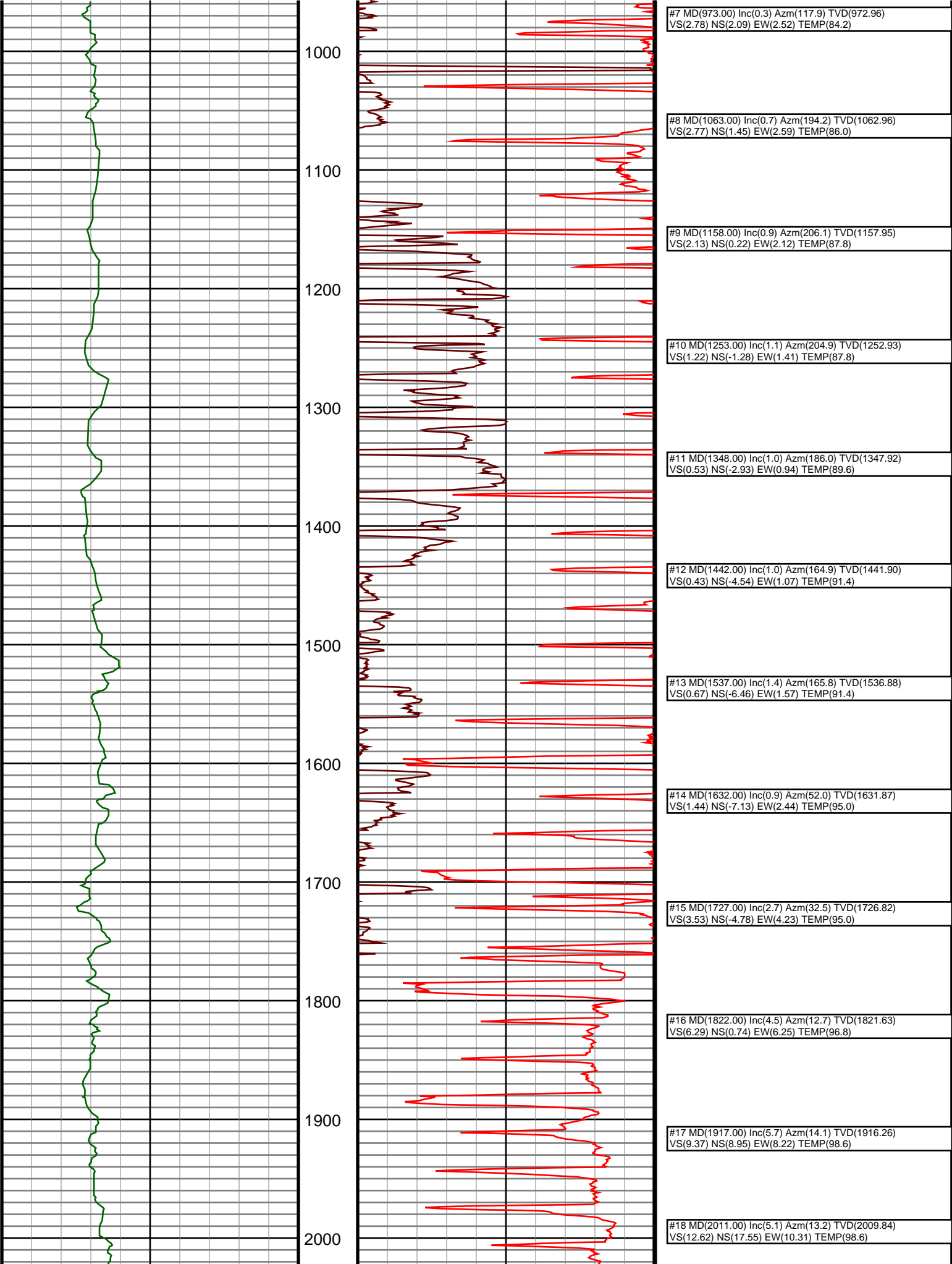
DF: 4692

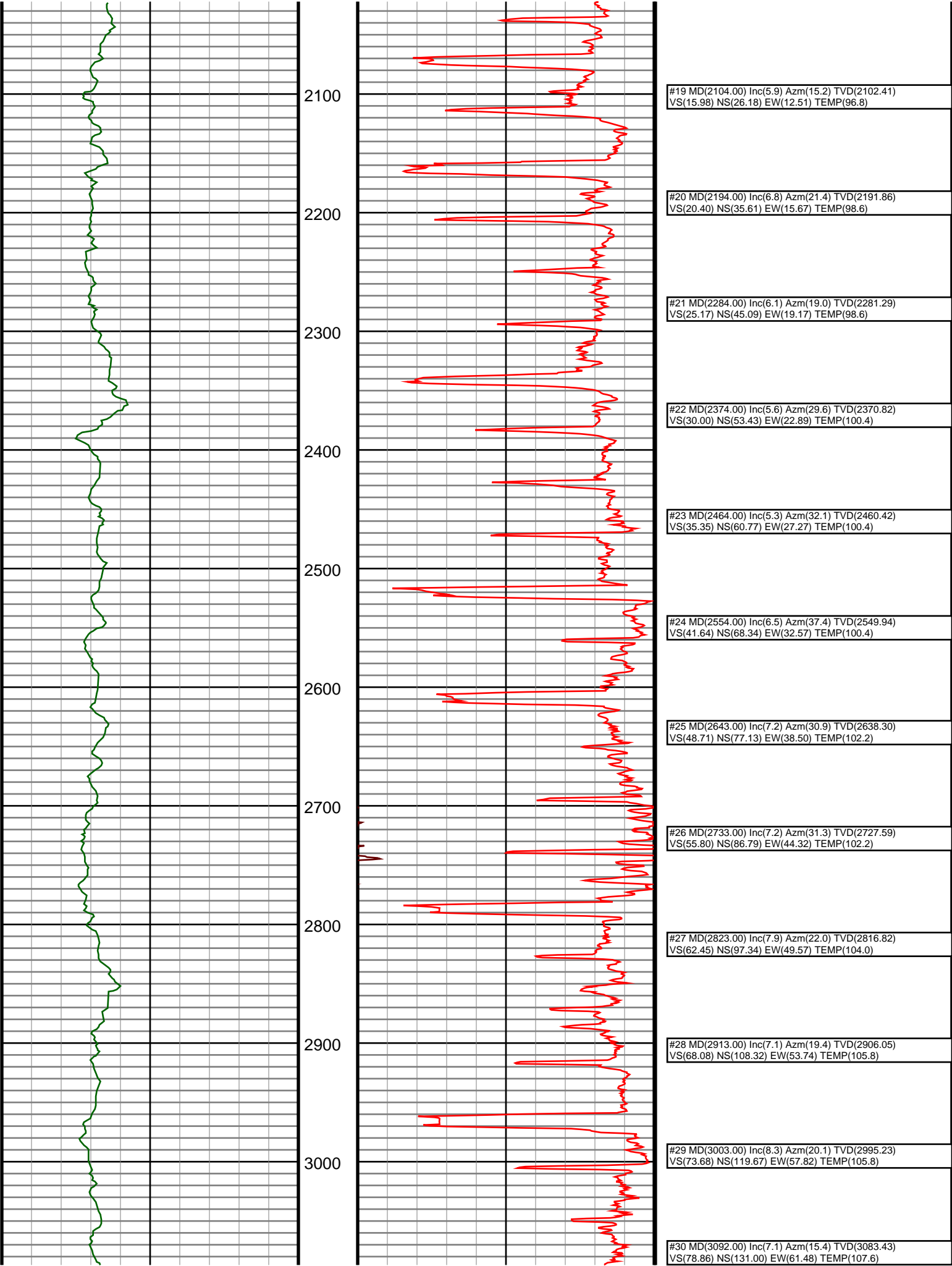
Run	Bit Size	Gamma	Offsets	Survey	Start	End	Depths	Start	End	Dates	Start	End
-----	----------	-------	---------	--------	-------	-----	--------	-------	-----	-------	-------	-----

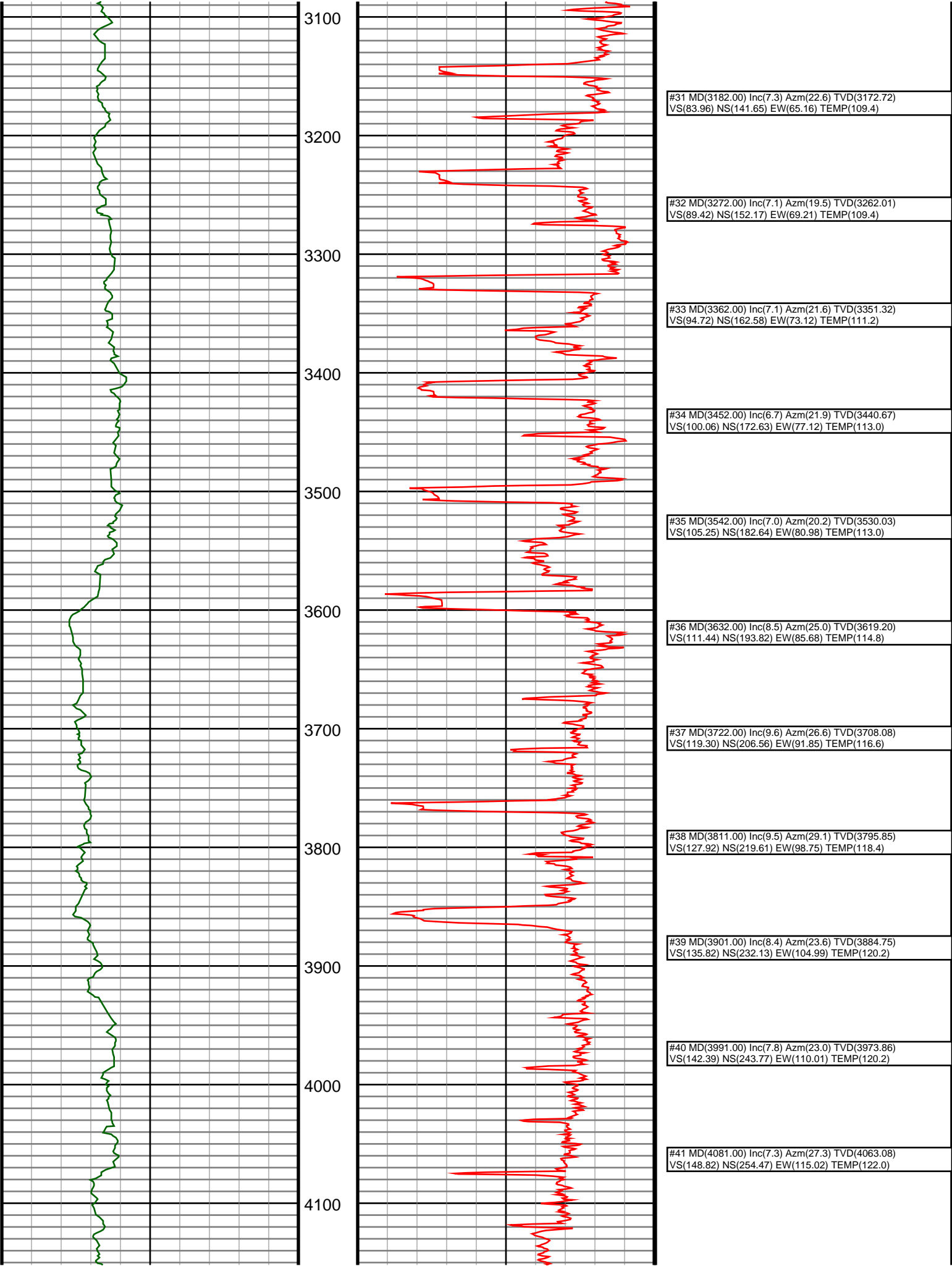
1	8 3/4	58.33	53.33	59.4	4236	6/8/2014	6/9/2014	6/11/2014	6/16/2014			
2	8 3/4	58.47	53.47	4236	7274	6/9/2014	6/11/2014	6/11/2014	6/16/2014			
3	6 1/8	64.10	59.10	7274	11387	6/12/2014	6/16/2014	6/16/2014	6/16/2014			
4												
5												
6												
7												
8												
9												
10												

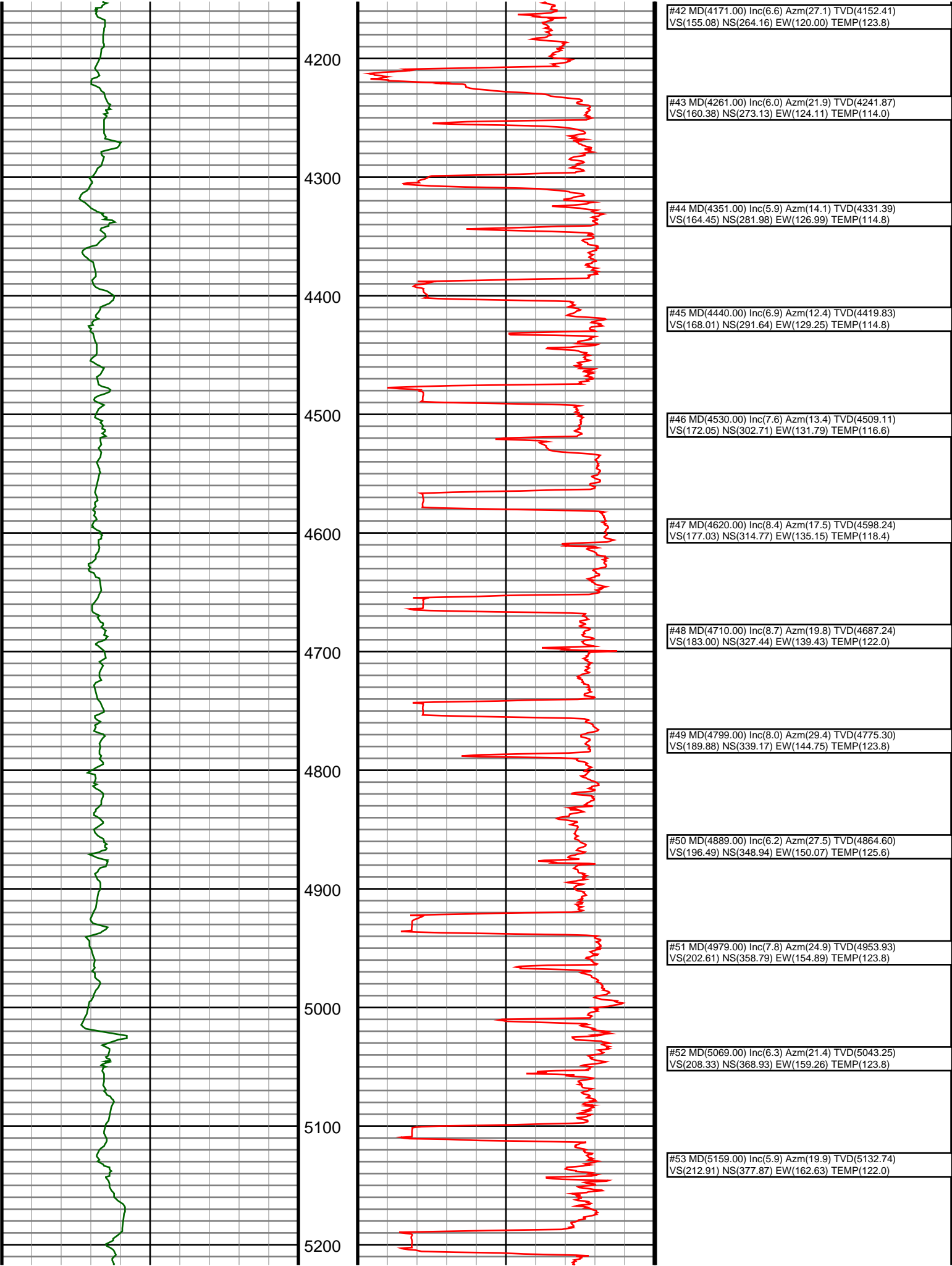
Ensign Directional uses its best efforts to provide its customers with accurate information and interpretations in conjunction with services performed but will not be held liable or responsible for the accuracy of such information or interpretation.

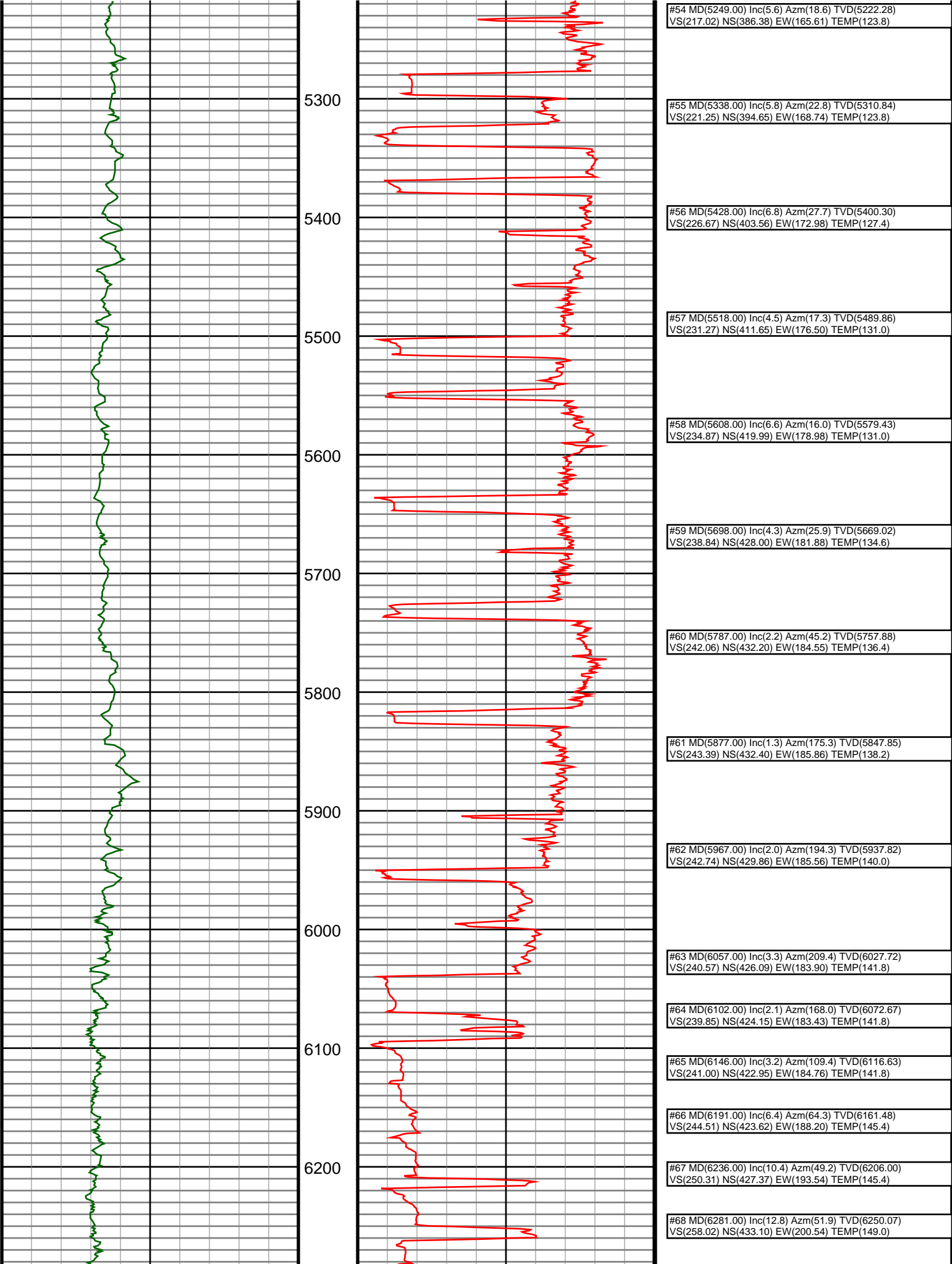


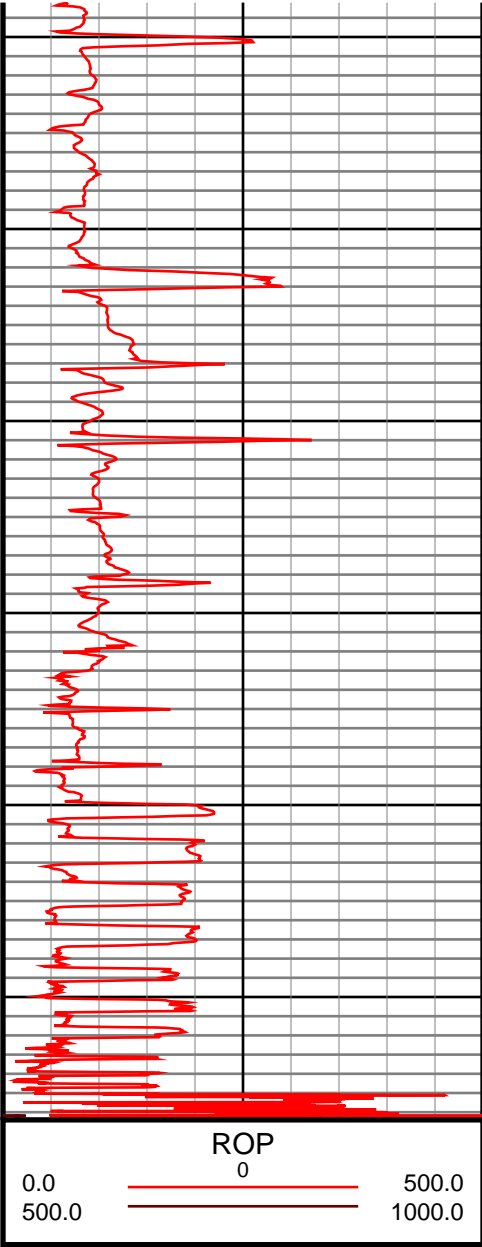
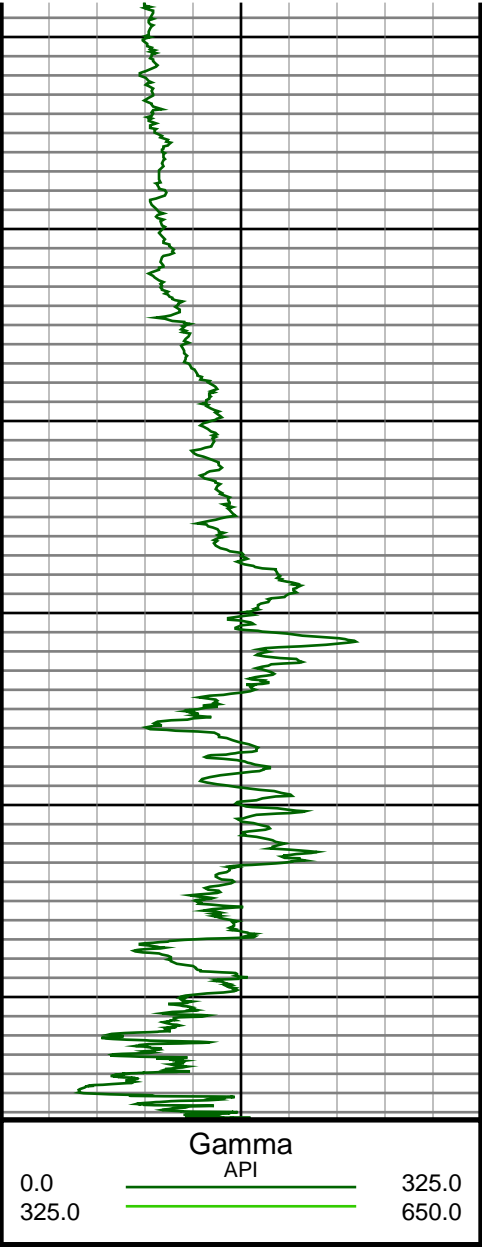












#69 MD(6326.00) Inc(14.9) Azm(60.0) TVD(6293.77) VS(267.69) NS(439.07) EW(209.47) TEMP(150.8)
#70 MD(6371.00) Inc(17.8) Azm(69.4) TVD(6336.95) VS(279.77) NS(444.38) EW(220.93) TEMP(152.6)
#71 MD(6416.00) Inc(20.4) Azm(78.0) TVD(6379.48) VS(294.30) NS(448.44) EW(235.04) TEMP(152.6)
#72 MD(6461.00) Inc(23.2) Azm(81.5) TVD(6421.26) VS(310.99) NS(451.38) EW(251.48) TEMP(152.6)
#73 MD(6506.00) Inc(25.6) Azm(87.0) TVD(6462.24) VS(329.55) NS(453.20) EW(269.97) TEMP(156.2)
#74 MD(6551.00) Inc(29.3) Azm(87.5) TVD(6502.17) VS(350.20) NS(454.19) EW(290.68) TEMP(158.0)
#75 MD(6596.00) Inc(33.1) Azm(86.8) TVD(6540.65) VS(373.42) NS(455.35) EW(313.96) TEMP(158.0)
#76 MD(6640.00) Inc(37.2) Azm(87.7) TVD(6576.62) VS(398.65) NS(456.56) EW(339.26) TEMP(158.0)
#77 MD(6685.00) Inc(41.4) Azm(88.0) TVD(6611.44) VS(427.00) NS(457.62) EW(367.73) TEMP(158.0)
#78 MD(6730.00) Inc(46.0) Azm(87.4) TVD(6643.96) VS(457.93) NS(458.88) EW(398.79) TEMP(159.8)
#79 MD(6775.00) Inc(51.3) Azm(85.7) TVD(6673.68) VS(491.60) NS(460.93) EW(432.49) TEMP(158.0)
#80 MD(6820.00) Inc(55.4) Azm(85.3) TVD(6700.54) VS(527.63) NS(463.76) EW(468.48) TEMP(159.8)
#81 MD(6865.00) Inc(58.6) Azm(84.9) TVD(6725.04) VS(565.32) NS(466.99) EW(506.07) TEMP(161.6)
#82 MD(6910.00) Inc(61.2) Azm(85.2) TVD(6747.61) VS(604.20) NS(470.35) EW(544.86) TEMP(161.6)
#83 MD(6955.00) Inc(63.1) Azm(86.8) TVD(6768.63) VS(643.89) NS(473.12) EW(584.54) TEMP(161.6)
#85 MD(7045.00) Inc(69.9) Azm(87.5) TVD(6804.43) VS(726.07) NS(477.03) EW(666.97) TEMP(165.2)
#90 MD(7296.00) Inc(87.6) Azm(86.6) TVD(6852.04) VS(970.33) NS(486.93) EW(912.19) TEMP(185.0)
#94 MD(7645.00) Inc(89.5) Azm(88.3) TVD(6863.28) VS(1017.27) NS(489.12) EW(1200.74) TEMP(181.4)