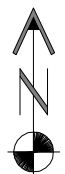
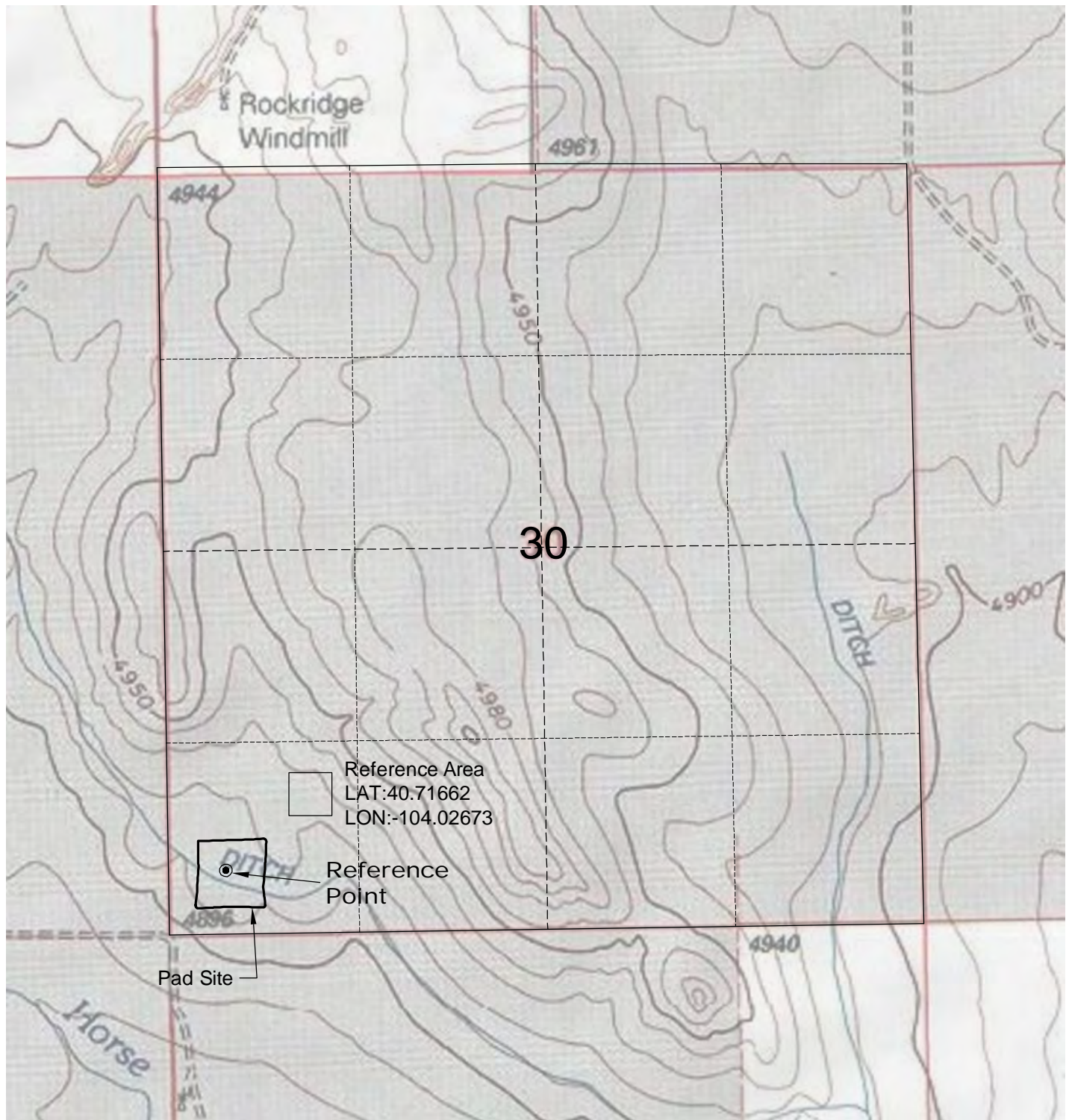
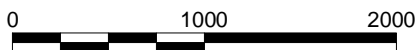


REFERENCE AREA MAP



North



Graphic Scale in Feet
1" = 1000'



A division of Topographic Land Surveyors
www.topographic.com

2/2/15

CARRIZO NIOBRARA LLC
PTASNIK 1-30-9-59 PAD

LOT 4 SECTION 30 T9N R59W
6th PM WELD COUNTY COLORADO