

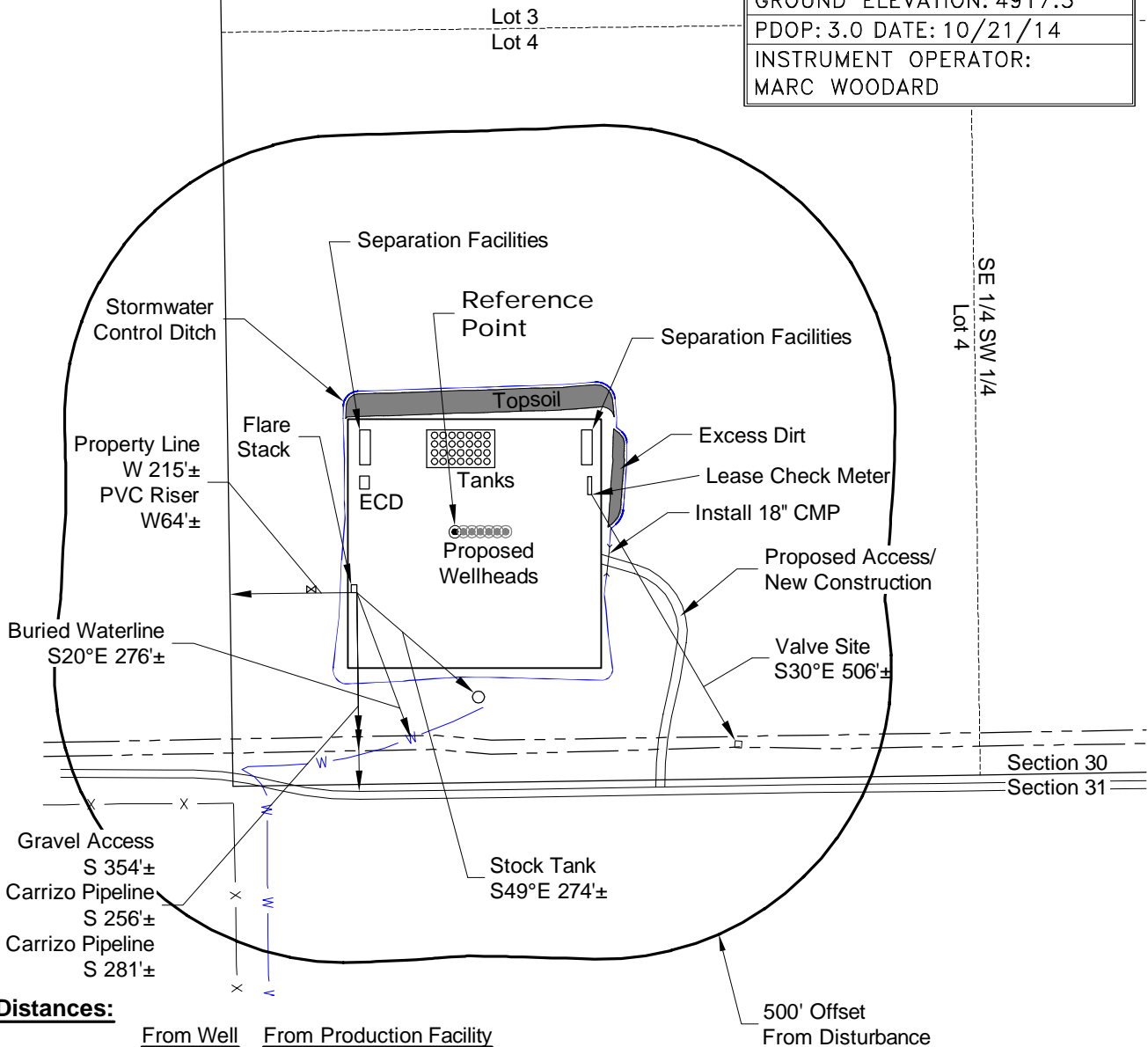
LOCATION DRAWING

PLANT COMMUNITY:
DISTURBED GRASSLAND

SURFACE USE:
RANGELAND

REFERENCE POINT

LATITUDE: 40.71519
LONGITUDE: -104.02889
FOOTAGE: 446 FSL 401 FWL
GROUND ELEVATION: 4917.3
PDOP: 3.0 DATE: 10/21/14
INSTRUMENT OPERATOR: MARC WOODARD



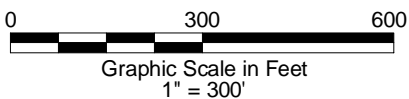
Cultural Distances:

	From Well	From Production Facility
Property Line	401'±	215'±
Public Road - WCR 100	5280'+	5280'+
Building	5280'+	5280'+
Railroad	5280'+	5280'+
Above Ground Utility	5280'+	5280'+

DISTURBANCE ACREAGE:
6.7± DRILLING OPERATIONS

NOTE:
PRODUCTION FACILITIES ON PAD.

2/2/15



A division of Topographic Land Surveyors
www.topographic.com

CARRIZO NIOBRARA LLC
PTASNIK 1-30-9-59 PAD

LOT 4 SECTION 30 T9N R59W
6th PM WELD COUNTY COLORADO