

EXTRACTION OIL & GAS

Location: COLORADO Slot: SLOT#02 KODAK 3 (1245'FNL & 1043'FWL, SEC.27)
Field: WELD COUNTY (NAD83/TRUE NORTH) Well: KODAK 3
Facility: SEC.27-T06N-R67W Wellbore: KODAK 3 PWB

Plot reference wellpath is KODAK 3 PWB (REV-B.0)

True vertical depths are referenced to FRONTIER 10 (22'KB) (RKB)	Grid System: NAD83 / Lambert Colorado SP, Northern Zone (501), US feet
Measured depths are referenced to FRONTIER 10 (22'KB) (RKB)	North Reference: True north
FRONTIER 10 (22'KB) to Mean Sea Level: 4792 feet	Scale: True distance
Mean Sea Level to Mud line (At Slot: SLOT#02 KODAK 3 (1245'FNL & 1043'FWL, SEC.27)): 0 feet	Depths are in feet
Coordinates are in feet referenced to Slot	Created by: ingmjamm on 12/15/2014

Location Information

Facility Name	Grid East (US ft)	Grid North (US ft)	Latitude	Longitude
SEC.27-T06N-R67W	3171020.645	1411663.140	40°27'42.444"N	104°53'07.368"W
Slot	Local N (ft)	Local E (ft)	Grid East (US ft)	Grid North (US ft)
SLOT#02 KODAK 3 (1245'FNL & 1043'FWL, SEC.27)	-14.57	0.00	3171020.746	1411648.568
FRONTIER 10 (22'KB) (RKB) to Mud line (At Slot: SLOT#02 KODAK 3 (1245'FNL & 1043'FWL, SEC.27))				4792ft
Mean Sea Level to Mud line (At Slot: SLOT#02 KODAK 3 (1245'FNL & 1043'FWL, SEC.27))				0ft
FRONTIER 10 (22'KB) (RKB) to Mean Sea Level				4792ft

Targets

Name	MD (ft)	TVD (ft)	Local N (ft)	Local E (ft)	Grid East (US ft)	Grid North (US ft)	Latitude	Longitude
SEC.27-T06N-R67W		0.00	14.57	0.00	3171020.64	1411663.14	40°27'42.444"N	104°53'07.368"W
SEC.28-T6N-R67W		0.00	14.57	0.00	3171020.64	1411663.14	40°27'42.444"N	104°53'07.368"W
SEC.29-T6N-R67W		0.00	14.57	0.00	3171020.64	1411663.14	40°27'42.444"N	104°53'07.368"W
KODAK 3 BHL ON PLAT REV-2 (97'FNL & 460'FWL, SEC.29)	16918.28	6940.00	1099.03	-10968.81	3180045.00	1412671.51	40°27'53.136"N	104°55'29.280"W
KODAK 3 DRILLING CORRIDOR (R07)		6940.00	0.00	0.00	3171020.75	1411648.57	40°27'42.300"N	104°53'07.368"W
KODAK 3 LANDING POINT REV-2	7449.26	6940.00	1096.64	-1499.79	3189513.44	1412734.74	40°27'53.136"N	104°53'26.772"W

Survey Program

Start MD (ft)	End MD (ft)	Tool	Model	Log Name/Comment	Wellbore
22.00	17000.00	NaviTrak	NaviTrak (Standard)		KODAK 3 PWB

Well Profile Data

Design Comment	MD (ft)	Inc (°)	Az (°)	TVD (ft)	Local N (ft)	Local E (ft)	DLS (°/100ft)	VS (ft)
Tie On	22.00	0.000	340.000	22.00	0.00	0.00	0.00	0.00
End of Tangent	200.00	0.000	340.000	200.00	0.00	0.00	0.00	0.00
End of Build	300.00	1.000	340.000	299.99	0.82	-0.30	1.00	0.38
End of Tangent	850.09	1.000	340.000	850.00	9.84	-3.58	0.00	4.55
End of Build	1300.09	10.000	340.000	1297.47	50.33	-18.32	2.00	23.24
End of Tangent	1800.09	10.000	340.000	1789.87	131.92	-48.01	0.00	60.93
End of 3D Arc	2176.74	15.151	314.003	2157.65	196.93	-94.67	2.00	113.83
End of Tangent	6657.65	15.151	314.003	6482.80	1010.52	-937.08	0.00	1033.16
End of 3D Arc	7449.26	90.000	270.014	6940.00	1096.64	-1499.79	10.00	1601.65
End of Tangent	16918.28	90.000	270.014	6940.00	1099.03	-10968.81	0.00	11023.73

True Vertical Depth (ft)
Scale 1 inch = 1500 ft

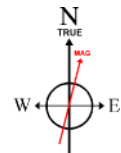
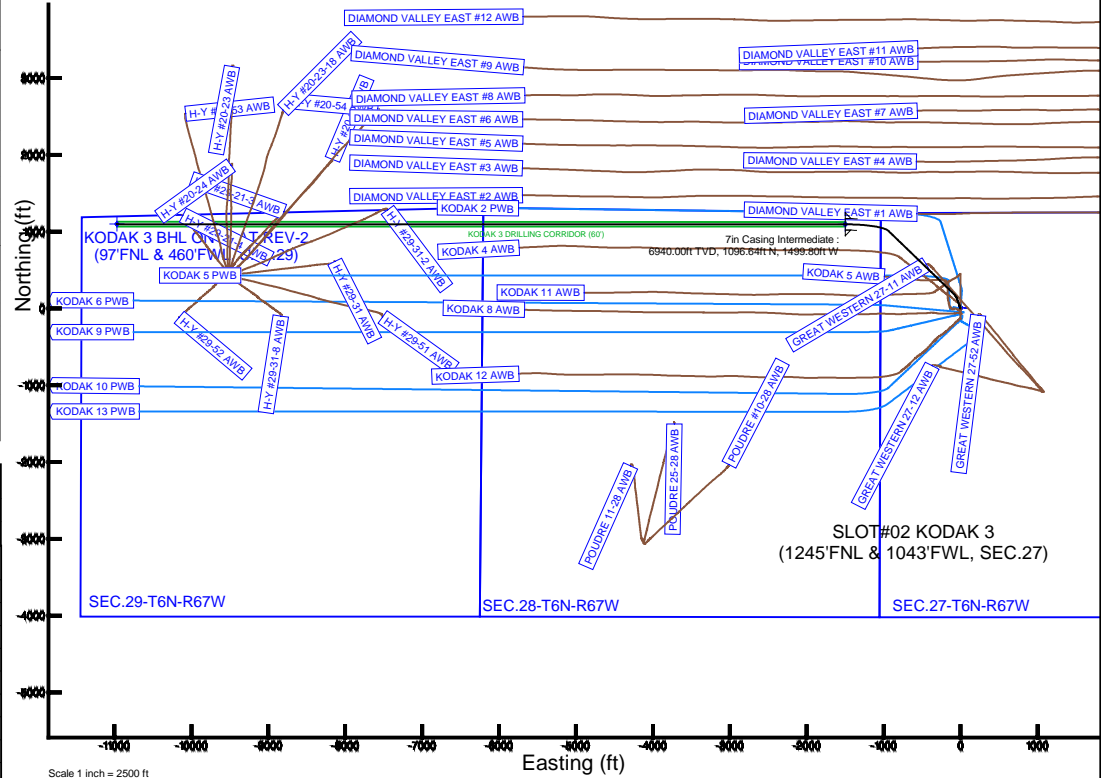
End of Tangent : 15.15° Inc, 6657.65ft MD, 6482.80ft TVD, 1033.16ft VS
10.00°/100ft
7in Casing Intermediate : 90.00° Inc, 7449.26ft MD, 6940.00ft TVD, 1601.66ft VS
End of 3D Arc : 90.00° Inc, 7449.26ft MD, 6940.00ft TVD, 1601.65ft VS

End of Tangent : 90.00° Inc, 16918.28ft MD, 6940.00ft TVD, 11023.73ft VS

KODAK 3 BHL ON PLAT REV-2 (97'FNL & 460'FWL, SEC.29)

Vertical Section (ft)

Azimuth 275.72° with reference 0.00 N, 0.00 E



BGGM (1945.0 to 2016.0) Dip: 66.95° Field: 52673.6 nT
Magnetic North is 8.56 degrees East of True North (at 12/15/2014)

To correct azimuth from Magnetic to True add 8.56 degrees



Planned Wellpath Report

KODAK 3 PWP (REV-B.0)

Page 1 of 9



REFERENCE WELLPATH IDENTIFICATION

Operator	EXTRACTION OIL & GAS	Slot	SLOT#02 KODAK 3 (1245'FNL & 1043'FWL, SEC.27)
Area	COLORADO	Well	KODAK 3
Field	WELD COUNTY (NAD83/TRUE NORTH)	Wellbore	KODAK 3 PWB
Facility	SEC.27-T06N-R67W		

REPORT SETUP INFORMATION

Projection System	NAD83 / Lambert Colorado SP, Northern Zone (501), US feet	Software System	WellArchitect® 4.0.0
North Reference	True	User	Ingmjmr
Scale	0.999964	Report Generated	12/15/2014 at 2:21:58 PM
Convergence at slot	n/a	Database/Source file	Denver/KODAK_3_PWB.xml

WELLPATH LOCATION

	Local coordinates		Grid coordinates		Geographic coordinates	
	North[ft]	East[ft]	Easting[US ft]	Northing[US ft]	Latitude	Longitude
Slot Location	-14.57	0.00	3171020.75	1411648.57	40°27'42.300"N	104°53'07.368"W
Facility Reference Pt			3171020.65	1411663.14	40°27'42.444"N	104°53'07.368"W
Field Reference Pt			3185481.27	1419166.81	40°28'55.560"N	104°49'59.556"W

WELLPATH DATUM

Calculation method	Minimum curvature	FRONTIER 10 (22'KB) (RKB) to Facility Vertical Datum	4792.00ft
Horizontal Reference Pt	Slot	FRONTIER 10 (22'KB) (RKB) to Mean Sea Level	4792.00ft
Vertical Reference Pt	FRONTIER 10 (22'KB) (RKB)	FRONTIER 10 (22'KB) (RKB) to Mud Line at Slot (SLOT#02 KODAK 3 (1245'FNL & 1043'FWL, SEC.27))	4792.00ft
MD Reference Pt	FRONTIER 10 (22'KB) (RKB)	Section Origin	N 0.00, E 0.00 ft
Field Vertical Reference	Mean Sea Level	Section Azimuth	275.72°



Planned Wellpath Report

KODAK 3 PWP (REV-B.0)

Page 2 of 9



REFERENCE WELLPATH IDENTIFICATION

Operator	EXTRACTION OIL & GAS	Slot	SLOT#02 KODAK 3 (1245'FNL & 1043'FWL, SEC.27)
Area	COLORADO	Well	KODAK 3
Field	WELD COUNTY (NAD83/TRUE NORTH)	Wellbore	KODAK 3 PWB
Facility	SEC.27-T06N-R67W		

WELLPATH DATA (179 stations) † = interpolated/extrapolated station

MD [ft]	Inclination [°]	Azimuth [°]	TVD [ft]	Vert Sect [ft]	North [ft]	East [ft]	Latitude	Longitude	DLS [°/100ft]	Comments
0.00†	0.000	340.000	0.00	0.00	0.00	0.00	40°27'42.300"N	104°53'07.368"W	0.00	
22.00	0.000	340.000	22.00	0.00	0.00	0.00	40°27'42.300"N	104°53'07.368"W	0.00	Tie On
122.00†	0.000	340.000	122.00	0.00	0.00	0.00	40°27'42.300"N	104°53'07.368"W	0.00	
200.00	0.000	340.000	200.00	0.00	0.00	0.00	40°27'42.300"N	104°53'07.368"W	0.00	End of Tangent
222.00†	0.220	340.000	222.00	0.02	0.04	-0.01	40°27'42.300"N	104°53'07.368"W	1.00	
300.00	1.000	340.000	299.99	0.38	0.82	-0.30	40°27'42.308"N	104°53'07.372"W	1.00	End of Build
322.00†	1.000	340.000	321.99	0.55	1.18	-0.43	40°27'42.312"N	104°53'07.374"W	0.00	
422.00†	1.000	340.000	421.98	1.30	2.82	-1.03	40°27'42.328"N	104°53'07.381"W	0.00	
522.00†	1.000	340.000	521.96	2.06	4.46	-1.62	40°27'42.344"N	104°53'07.389"W	0.00	
622.00†	1.000	340.000	621.95	2.82	6.10	-2.22	40°27'42.360"N	104°53'07.397"W	0.00	
722.00†	1.000	340.000	721.93	3.58	7.74	-2.82	40°27'42.376"N	104°53'07.404"W	0.00	
822.00†	1.000	340.000	821.92	4.33	9.38	-3.41	40°27'42.393"N	104°53'07.412"W	0.00	
850.09	1.000	340.000	850.00	4.55	9.84	-3.58	40°27'42.397"N	104°53'07.414"W	0.00	End of Tangent
922.00†	2.438	340.000	921.88	5.48	11.87	-4.32	40°27'42.417"N	104°53'07.424"W	2.00	
1022.00†	4.438	340.000	1021.69	8.08	17.50	-6.37	40°27'42.473"N	104°53'07.450"W	2.00	
1122.00†	6.438	340.000	1121.24	12.20	26.41	-9.61	40°27'42.561"N	104°53'07.492"W	2.00	
1222.00†	8.438	340.000	1220.39	17.82	38.57	-14.04	40°27'42.681"N	104°53'07.550"W	2.00	
1300.09	10.000	340.000	1297.47	23.24	50.33	-18.32	40°27'42.797"N	104°53'07.605"W	2.00	End of Build
1322.00†	10.000	340.000	1319.05	24.90	53.90	-19.62	40°27'42.833"N	104°53'07.622"W	0.00	
1422.00†	10.000	340.000	1417.53	32.43	70.22	-25.56	40°27'42.994"N	104°53'07.699"W	0.00	
1522.00†	10.000	340.000	1516.01	39.97	86.54	-31.50	40°27'43.155"N	104°53'07.775"W	0.00	
1622.00†	10.000	340.000	1614.49	47.51	102.86	-37.44	40°27'43.316"N	104°53'07.852"W	0.00	
1722.00†	10.000	340.000	1712.97	55.04	119.17	-43.38	40°27'43.478"N	104°53'07.929"W	0.00	
1800.09	10.000	340.000	1789.87	60.93	131.92	-48.01	40°27'43.604"N	104°53'07.989"W	0.00	End of Tangent
1822.00†	10.220	337.841	1811.44	62.66	135.51	-49.40	40°27'43.639"N	104°53'08.007"W	2.00	
1922.00†	11.384	329.144	1909.68	72.69	152.20	-57.81	40°27'43.804"N	104°53'08.116"W	2.00	
2022.00†	12.755	322.165	2007.47	86.18	169.39	-69.64	40°27'43.974"N	104°53'08.269"W	2.00	
2122.00†	14.273	316.582	2104.70	103.11	187.06	-84.89	40°27'44.148"N	104°53'08.466"W	2.00	
2176.74	15.151	314.003	2157.65	113.83	196.93	-94.67	40°27'44.246"N	104°53'08.593"W	2.00	End of 3D Arc
2222.00†	15.151	314.003	2201.33	123.12	205.15	-103.18	40°27'44.327"N	104°53'08.703"W	0.00	



Planned Wellpath Report

KODAK 3 PWP (REV-B.0)

Page 3 of 9



REFERENCE WELLPATH IDENTIFICATION

Operator	EXTRACTION OIL & GAS	Slot	SLOT#02 KODAK 3 (1245'FNL & 1043'FWL, SEC.27)
Area	COLORADO	Well	KODAK 3
Field	WELD COUNTY (NAD83/TRUE NORTH)	Wellbore	KODAK 3 PWB
Facility	SEC.27-T06N-R67W		

WELLPATH DATA (179 stations) † = interpolated/extrapolated station

MD [ft]	Inclination [°]	Azimuth [°]	TVD [ft]	Vert Sect [ft]	North [ft]	East [ft]	Latitude	Longitude	DLS [°/100ft]	Comments
2322.00†	15.151	314.003	2297.86	143.64	223.31	-121.98	40°27'44.507"N	104°53'08.946"W	0.00	
2422.00†	15.151	314.003	2394.38	164.15	241.47	-140.78	40°27'44.686"N	104°53'09.189"W	0.00	
2522.00†	15.151	314.003	2490.90	184.67	259.62	-159.58	40°27'44.865"N	104°53'09.433"W	0.00	
2622.00†	15.151	314.003	2587.43	205.18	277.78	-178.38	40°27'45.045"N	104°53'09.676"W	0.00	
2722.00†	15.151	314.003	2683.95	225.70	295.94	-197.18	40°27'45.224"N	104°53'09.919"W	0.00	
2822.00†	15.151	314.003	2780.48	246.22	314.09	-215.98	40°27'45.404"N	104°53'10.162"W	0.00	
2922.00†	15.151	314.003	2877.00	266.73	332.25	-234.78	40°27'45.583"N	104°53'10.405"W	0.00	
3022.00†	15.151	314.003	2973.53	287.25	350.41	-253.58	40°27'45.763"N	104°53'10.649"W	0.00	
3122.00†	15.151	314.003	3070.05	307.77	368.56	-272.38	40°27'45.942"N	104°53'10.892"W	0.00	
3222.00†	15.151	314.003	3166.57	328.28	386.72	-291.18	40°27'46.121"N	104°53'11.135"W	0.00	
3322.00†	15.151	314.003	3263.10	348.80	404.88	-309.98	40°27'46.301"N	104°53'11.378"W	0.00	
3422.00†	15.151	314.003	3359.62	369.32	423.03	-328.78	40°27'46.480"N	104°53'11.622"W	0.00	
3522.00†	15.151	314.003	3456.15	389.83	441.19	-347.58	40°27'46.660"N	104°53'11.865"W	0.00	
3622.00†	15.151	314.003	3552.67	410.35	459.35	-366.38	40°27'46.839"N	104°53'12.108"W	0.00	
3722.00†	15.151	314.003	3649.19	430.87	477.50	-385.18	40°27'47.018"N	104°53'12.351"W	0.00	
3822.00†	15.151	314.003	3745.72	451.38	495.66	-403.98	40°27'47.198"N	104°53'12.594"W	0.00	
3922.00†	15.151	314.003	3842.24	471.90	513.81	-422.78	40°27'47.377"N	104°53'12.838"W	0.00	
4022.00†	15.151	314.003	3938.77	492.42	531.97	-441.58	40°27'47.557"N	104°53'13.081"W	0.00	
4122.00†	15.151	314.003	4035.29	512.93	550.13	-460.38	40°27'47.736"N	104°53'13.324"W	0.00	
4222.00†	15.151	314.003	4131.81	533.45	568.28	-479.18	40°27'47.915"N	104°53'13.567"W	0.00	
4322.00†	15.151	314.003	4228.34	553.96	586.44	-497.98	40°27'48.095"N	104°53'13.811"W	0.00	
4422.00†	15.151	314.003	4324.86	574.48	604.60	-516.78	40°27'48.274"N	104°53'14.054"W	0.00	
4522.00†	15.151	314.003	4421.39	595.00	622.75	-535.58	40°27'48.454"N	104°53'14.297"W	0.00	
4622.00†	15.151	314.003	4517.91	615.51	640.91	-554.38	40°27'48.633"N	104°53'14.540"W	0.00	
4722.00†	15.151	314.003	4614.43	636.03	659.07	-573.18	40°27'48.813"N	104°53'14.784"W	0.00	
4822.00†	15.151	314.003	4710.96	656.55	677.22	-591.98	40°27'48.992"N	104°53'15.027"W	0.00	
4922.00†	15.151	314.003	4807.48	677.06	695.38	-610.78	40°27'49.171"N	104°53'15.270"W	0.00	
5022.00†	15.151	314.003	4904.01	697.58	713.54	-629.58	40°27'49.351"N	104°53'15.513"W	0.00	
5122.00†	15.151	314.003	5000.53	718.10	731.69	-648.38	40°27'49.530"N	104°53'15.756"W	0.00	
5222.00†	15.151	314.003	5097.06	738.61	749.85	-667.18	40°27'49.710"N	104°53'16.000"W	0.00	



Planned Wellpath Report

KODAK 3 PWP (REV-B.0)

Page 4 of 9



REFERENCE WELLPATH IDENTIFICATION

Operator	EXTRACTION OIL & GAS	Slot	SLOT#02 KODAK 3 (1245'FNL & 1043'FWL, SEC.27)
Area	COLORADO	Well	KODAK 3
Field	WELD COUNTY (NAD83/TRUE NORTH)	Wellbore	KODAK 3 PWB
Facility	SEC.27-T06N-R67W		

WELLPATH DATA (179 stations) † = interpolated/extrapolated station

MD [ft]	Inclination [°]	Azimuth [°]	TVD [ft]	Vert Sect [ft]	North [ft]	East [ft]	Latitude	Longitude	DLS [°/100ft]	Comments
5322.00†	15.151	314.003	5193.58	759.13	768.01	-685.98	40°27'49.889"N	104°53'16.243"W	0.00	
5422.00†	15.151	314.003	5290.10	779.65	786.16	-704.78	40°27'50.068"N	104°53'16.486"W	0.00	
5522.00†	15.151	314.003	5386.63	800.16	804.32	-723.58	40°27'50.248"N	104°53'16.729"W	0.00	
5622.00†	15.151	314.003	5483.15	820.68	822.48	-742.38	40°27'50.427"N	104°53'16.973"W	0.00	
5722.00†	15.151	314.003	5579.68	841.19	840.63	-761.18	40°27'50.607"N	104°53'17.216"W	0.00	
5822.00†	15.151	314.003	5676.20	861.71	858.79	-779.98	40°27'50.786"N	104°53'17.459"W	0.00	
5922.00†	15.151	314.003	5772.72	882.23	876.95	-798.78	40°27'50.965"N	104°53'17.702"W	0.00	
6022.00†	15.151	314.003	5869.25	902.74	895.10	-817.58	40°27'51.145"N	104°53'17.946"W	0.00	
6122.00†	15.151	314.003	5965.77	923.26	913.26	-836.38	40°27'51.324"N	104°53'18.189"W	0.00	
6222.00†	15.151	314.003	6062.30	943.78	931.42	-855.18	40°27'51.504"N	104°53'18.432"W	0.00	
6322.00†	15.151	314.003	6158.82	964.29	949.57	-873.98	40°27'51.683"N	104°53'18.675"W	0.00	
6422.00†	15.151	314.003	6255.34	984.81	967.73	-892.78	40°27'51.862"N	104°53'18.919"W	0.00	
6522.00†	15.151	314.003	6351.87	1005.33	985.89	-911.58	40°27'52.042"N	104°53'19.162"W	0.00	
6622.00†	15.151	314.003	6448.39	1025.84	1004.04	-930.38	40°27'52.221"N	104°53'19.405"W	0.00	
6657.65	15.151	314.003	6482.80	1033.16	1010.52	-937.08	40°27'52.285"N	104°53'19.492"W	0.00	End of Tangent
6722.00†	20.208	300.738	6544.12	1049.85	1022.05	-952.70	40°27'52.399"N	104°53'19.694"W	10.00	
6822.00†	29.131	289.736	6634.95	1089.21	1039.14	-990.55	40°27'52.568"N	104°53'20.183"W	10.00	
6922.00†	38.552	283.664	6717.94	1143.83	1054.76	-1043.88	40°27'52.722"N	104°53'20.873"W	10.00	
7022.00†	48.179	279.701	6790.56	1212.04	1068.44	-1111.06	40°27'52.858"N	104°53'21.743"W	10.00	
7122.00†	57.906	276.788	6850.62	1291.77	1079.75	-1190.05	40°27'52.969"N	104°53'22.765"W	10.00	
7222.00†	67.687	274.441	6896.28	1380.59	1088.36	-1278.45	40°27'53.054"N	104°53'23.908"W	10.00	
7322.00†	77.497	272.404	6926.17	1475.81	1094.00	-1373.58	40°27'53.110"N	104°53'25.139"W	10.00	
7422.00†	87.321	270.519	6939.36	1574.53	1096.51	-1472.55	40°27'53.135"N	104°53'26.419"W	10.00	
7449.26	90.000	270.014	6940.00†	1601.65	1096.64	-1499.79	40°27'53.136"N	104°53'26.772"W	10.00	End of 3D Arc
7522.00†	90.000	270.014	6940.00	1674.03	1096.66	-1572.54	40°27'53.136"N	104°53'27.713"W	0.00	
7622.00†	90.000	270.014	6940.00	1773.54	1096.68	-1672.54	40°27'53.136"N	104°53'29.007"W	0.00	
7722.00†	90.000	270.014	6940.00	1873.04	1096.71	-1772.54	40°27'53.137"N	104°53'30.301"W	0.00	
7822.00†	90.000	270.014	6940.00	1972.55	1096.73	-1872.54	40°27'53.137"N	104°53'31.594"W	0.00	
7922.00†	90.000	270.014	6940.00	2072.05	1096.76	-1972.54	40°27'53.137"N	104°53'32.888"W	0.00	
8022.00†	90.000	270.014	6940.00	2171.56	1096.78	-2072.54	40°27'53.137"N	104°53'34.182"W	0.00	



Planned Wellpath Report

KODAK 3 PWP (REV-B.0)

Page 5 of 9



REFERENCE WELLPATH IDENTIFICATION

Operator	EXTRACTION OIL & GAS	Slot	SLOT#02 KODAK 3 (1245'FNL & 1043'FWL, SEC.27)
Area	COLORADO	Well	KODAK 3
Field	WELD COUNTY (NAD83/TRUE NORTH)	Wellbore	KODAK 3 PWB
Facility	SEC.27-T06N-R67W		

WELLPATH DATA (179 stations) † = interpolated/extrapolated station

MD [ft]	Inclination [°]	Azimuth [°]	TVD [ft]	Vert Sect [ft]	North [ft]	East [ft]	Latitude	Longitude	DLS [°/100ft]	Comments
8122.00†	90.000	270.014	6940.00	2271.06	1096.81	-2172.54	40°27'53.137"N	104°53'35.476"W	0.00	
8222.00†	90.000	270.014	6940.00	2370.56	1096.83	-2272.54	40°27'53.137"N	104°53'36.770"W	0.00	
8322.00†	90.000	270.014	6940.00	2470.07	1096.86	-2372.54	40°27'53.138"N	104°53'38.063"W	0.00	
8422.00†	90.000	270.014	6940.00	2569.57	1096.88	-2472.54	40°27'53.138"N	104°53'39.357"W	0.00	
8522.00†	90.000	270.014	6940.00	2669.08	1096.91	-2572.54	40°27'53.138"N	104°53'40.651"W	0.00	
8622.00†	90.000	270.014	6940.00	2768.58	1096.93	-2672.54	40°27'53.138"N	104°53'41.945"W	0.00	
8722.00†	90.000	270.014	6940.00	2868.09	1096.96	-2772.54	40°27'53.138"N	104°53'43.238"W	0.00	
8822.00†	90.000	270.014	6940.00	2967.59	1096.98	-2872.54	40°27'53.138"N	104°53'44.532"W	0.00	
8922.00†	90.000	270.014	6940.00	3067.10	1097.01	-2972.54	40°27'53.138"N	104°53'45.826"W	0.00	
9022.00†	90.000	270.014	6940.00	3166.60	1097.03	-3072.54	40°27'53.138"N	104°53'47.120"W	0.00	
9122.00†	90.000	270.014	6940.00	3266.10	1097.06	-3172.54	40°27'53.139"N	104°53'48.414"W	0.00	
9222.00†	90.000	270.014	6940.00	3365.61	1097.09	-3272.54	40°27'53.139"N	104°53'49.707"W	0.00	
9322.00†	90.000	270.014	6940.00	3465.11	1097.11	-3372.54	40°27'53.139"N	104°53'51.001"W	0.00	
9422.00†	90.000	270.014	6940.00	3564.62	1097.14	-3472.54	40°27'53.139"N	104°53'52.295"W	0.00	
9522.00†	90.000	270.014	6940.00	3664.12	1097.16	-3572.54	40°27'53.139"N	104°53'53.589"W	0.00	
9622.00†	90.000	270.014	6940.00	3763.63	1097.19	-3672.54	40°27'53.139"N	104°53'54.882"W	0.00	
9722.00†	90.000	270.014	6940.00	3863.13	1097.21	-3772.54	40°27'53.139"N	104°53'56.176"W	0.00	
9822.00†	90.000	270.014	6940.00	3962.63	1097.24	-3872.54	40°27'53.139"N	104°53'57.470"W	0.00	
9922.00†	90.000	270.014	6940.00	4062.14	1097.26	-3972.54	40°27'53.139"N	104°53'58.764"W	0.00	
10022.00†	90.000	270.014	6940.00	4161.64	1097.29	-4072.54	40°27'53.140"N	104°54'00.058"W	0.00	
10122.00†	90.000	270.014	6940.00	4261.15	1097.31	-4172.54	40°27'53.140"N	104°54'01.351"W	0.00	
10222.00†	90.000	270.014	6940.00	4360.65	1097.34	-4272.54	40°27'53.140"N	104°54'02.645"W	0.00	
10322.00†	90.000	270.014	6940.00	4460.16	1097.36	-4372.54	40°27'53.140"N	104°54'03.939"W	0.00	
10422.00†	90.000	270.014	6940.00	4559.66	1097.39	-4472.54	40°27'53.140"N	104°54'05.233"W	0.00	
10522.00†	90.000	270.014	6940.00	4659.16	1097.41	-4572.54	40°27'53.140"N	104°54'06.526"W	0.00	
10622.00†	90.000	270.014	6940.00	4758.67	1097.44	-4672.54	40°27'53.140"N	104°54'07.820"W	0.00	
10722.00†	90.000	270.014	6940.00	4858.17	1097.46	-4772.54	40°27'53.140"N	104°54'09.114"W	0.00	
10822.00†	90.000	270.014	6940.00	4957.68	1097.49	-4872.54	40°27'53.140"N	104°54'10.408"W	0.00	
10922.00†	90.000	270.014	6940.00	5057.18	1097.51	-4972.54	40°27'53.140"N	104°54'11.702"W	0.00	
11022.00†	90.000	270.014	6940.00	5156.69	1097.54	-5072.54	40°27'53.140"N	104°54'12.995"W	0.00	



Planned Wellpath Report

KODAK 3 PWP (REV-B.0)

Page 6 of 9



REFERENCE WELLPATH IDENTIFICATION

Operator	EXTRACTION OIL & GAS	Slot	SLOT#02 KODAK 3 (1245'FNL & 1043'FWL, SEC.27)
Area	COLORADO	Well	KODAK 3
Field	WELD COUNTY (NAD83/TRUE NORTH)	Wellbore	KODAK 3 PWB
Facility	SEC.27-T06N-R67W		

WELLPATH DATA (179 stations) † = interpolated/extrapolated station

MD [ft]	Inclination [°]	Azimuth [°]	TVD [ft]	Vert Sect [ft]	North [ft]	East [ft]	Latitude	Longitude	DLS [°/100ft]	Comments
11122.00†	90.000	270.014	6940.00	5256.19	1097.57	-5172.54	40°27'53.140"N	104°54'14.289"W	0.00	
11222.00†	90.000	270.014	6940.00	5355.69	1097.59	-5272.54	40°27'53.140"N	104°54'15.583"W	0.00	
11322.00†	90.000	270.014	6940.00	5455.20	1097.62	-5372.54	40°27'53.140"N	104°54'16.877"W	0.00	
11422.00†	90.000	270.014	6940.00	5554.70	1097.64	-5472.54	40°27'53.140"N	104°54'18.170"W	0.00	
11522.00†	90.000	270.014	6940.00	5654.21	1097.67	-5572.54	40°27'53.140"N	104°54'19.464"W	0.00	
11622.00†	90.000	270.014	6940.00	5753.71	1097.69	-5672.54	40°27'53.140"N	104°54'20.758"W	0.00	
11722.00†	90.000	270.014	6940.00	5853.22	1097.72	-5772.54	40°27'53.140"N	104°54'22.052"W	0.00	
11822.00†	90.000	270.014	6940.00	5952.72	1097.74	-5872.54	40°27'53.140"N	104°54'23.346"W	0.00	
11922.00†	90.000	270.014	6940.00	6052.22	1097.77	-5972.54	40°27'53.140"N	104°54'24.639"W	0.00	
12022.00†	90.000	270.014	6940.00	6151.73	1097.79	-6072.54	40°27'53.140"N	104°54'25.933"W	0.00	
12122.00†	90.000	270.014	6940.00	6251.23	1097.82	-6172.54	40°27'53.140"N	104°54'27.227"W	0.00	
12222.00†	90.000	270.014	6940.00	6350.74	1097.84	-6272.54	40°27'53.140"N	104°54'28.521"W	0.00	
12322.00†	90.000	270.014	6940.00	6450.24	1097.87	-6372.54	40°27'53.140"N	104°54'29.814"W	0.00	
12422.00†	90.000	270.014	6940.00	6549.75	1097.89	-6472.54	40°27'53.140"N	104°54'31.108"W	0.00	
12522.00†	90.000	270.014	6940.00	6649.25	1097.92	-6572.54	40°27'53.140"N	104°54'32.402"W	0.00	
12622.00†	90.000	270.014	6940.00	6748.75	1097.94	-6672.54	40°27'53.140"N	104°54'33.696"W	0.00	
12722.00†	90.000	270.014	6940.00	6848.26	1097.97	-6772.54	40°27'53.140"N	104°54'34.990"W	0.00	
12822.00†	90.000	270.014	6940.00	6947.76	1097.99	-6872.54	40°27'53.140"N	104°54'36.283"W	0.00	
12922.00†	90.000	270.014	6940.00	7047.27	1098.02	-6972.54	40°27'53.140"N	104°54'37.577"W	0.00	
13022.00†	90.000	270.014	6940.00	7146.77	1098.05	-7072.54	40°27'53.140"N	104°54'38.871"W	0.00	
13122.00†	90.000	270.014	6940.00	7246.28	1098.07	-7172.54	40°27'53.140"N	104°54'40.165"W	0.00	
13222.00†	90.000	270.014	6940.00	7345.78	1098.10	-7272.54	40°27'53.140"N	104°54'41.458"W	0.00	
13322.00†	90.000	270.014	6940.00	7445.28	1098.12	-7372.54	40°27'53.140"N	104°54'42.752"W	0.00	
13422.00†	90.000	270.014	6940.00	7544.79	1098.15	-7472.54	40°27'53.140"N	104°54'44.046"W	0.00	
13522.00†	90.000	270.014	6940.00	7644.29	1098.17	-7572.54	40°27'53.140"N	104°54'45.340"W	0.00	
13622.00†	90.000	270.014	6940.00	7743.80	1098.20	-7672.54	40°27'53.140"N	104°54'46.634"W	0.00	
13722.00†	90.000	270.014	6940.00	7843.30	1098.22	-7772.54	40°27'53.140"N	104°54'47.927"W	0.00	
13822.00†	90.000	270.014	6940.00	7942.81	1098.25	-7872.54	40°27'53.140"N	104°54'49.221"W	0.00	
13922.00†	90.000	270.014	6940.00	8042.31	1098.27	-7972.54	40°27'53.140"N	104°54'50.515"W	0.00	
14022.00†	90.000	270.014	6940.00	8141.81	1098.30	-8072.54	40°27'53.140"N	104°54'51.809"W	0.00	



Planned Wellpath Report

KODAK 3 PWP (REV-B.0)

Page 7 of 9



REFERENCE WELLPATH IDENTIFICATION

Operator	EXTRACTION OIL & GAS	Slot	SLOT#02 KODAK 3 (1245'FNL & 1043'FWL, SEC.27)
Area	COLORADO	Well	KODAK 3
Field	WELD COUNTY (NAD83/TRUE NORTH)	Wellbore	KODAK 3 PWB
Facility	SEC.27-T06N-R67W		

WELLPATH DATA (179 stations) † = interpolated/extrapolated station

MD [ft]	Inclination [°]	Azimuth [°]	TVD [ft]	Vert Sect [ft]	North [ft]	East [ft]	Latitude	Longitude	DLS [°/100ft]	Comments
14122.00†	90.000	270.014	6940.00	8241.32	1098.32	-8172.54	40°27'53.140"N	104°54'53.102"W	0.00	
14222.00†	90.000	270.014	6940.00	8340.82	1098.35	-8272.54	40°27'53.140"N	104°54'54.396"W	0.00	
14322.00†	90.000	270.014	6940.00	8440.33	1098.37	-8372.54	40°27'53.140"N	104°54'55.690"W	0.00	
14422.00†	90.000	270.014	6940.00	8539.83	1098.40	-8472.54	40°27'53.139"N	104°54'56.984"W	0.00	
14522.00†	90.000	270.014	6940.00	8639.34	1098.42	-8572.54	40°27'53.139"N	104°54'58.278"W	0.00	
14622.00†	90.000	270.014	6940.00	8738.84	1098.45	-8672.54	40°27'53.139"N	104°54'59.571"W	0.00	
14722.00†	90.000	270.014	6940.00	8838.34	1098.47	-8772.54	40°27'53.139"N	104°55'00.865"W	0.00	
14822.00†	90.000	270.014	6940.00	8937.85	1098.50	-8872.54	40°27'53.139"N	104°55'02.159"W	0.00	
14922.00†	90.000	270.014	6940.00	9037.35	1098.53	-8972.54	40°27'53.139"N	104°55'03.453"W	0.00	
15022.00†	90.000	270.014	6940.00	9136.86	1098.55	-9072.54	40°27'53.139"N	104°55'04.746"W	0.00	
15122.00†	90.000	270.014	6940.00	9236.36	1098.58	-9172.54	40°27'53.139"N	104°55'06.040"W	0.00	
15222.00†	90.000	270.014	6940.00	9335.87	1098.60	-9272.54	40°27'53.139"N	104°55'07.334"W	0.00	
15322.00†	90.000	270.014	6940.00	9435.37	1098.63	-9372.54	40°27'53.139"N	104°55'08.628"W	0.00	
15422.00†	90.000	270.014	6940.00	9534.87	1098.65	-9472.54	40°27'53.138"N	104°55'09.922"W	0.00	
15522.00†	90.000	270.014	6940.00	9634.38	1098.68	-9572.54	40°27'53.138"N	104°55'11.215"W	0.00	
15622.00†	90.000	270.014	6940.00	9733.88	1098.70	-9672.54	40°27'53.138"N	104°55'12.509"W	0.00	
15722.00†	90.000	270.014	6940.00	9833.39	1098.73	-9772.54	40°27'53.138"N	104°55'13.803"W	0.00	
15822.00†	90.000	270.014	6940.00	9932.89	1098.75	-9872.54	40°27'53.138"N	104°55'15.097"W	0.00	
15922.00†	90.000	270.014	6940.00	10032.40	1098.78	-9972.54	40°27'53.138"N	104°55'16.390"W	0.00	
16022.00†	90.000	270.014	6940.00	10131.90	1098.80	-10072.54	40°27'53.138"N	104°55'17.684"W	0.00	
16122.00†	90.000	270.014	6940.00	10231.40	1098.83	-10172.54	40°27'53.137"N	104°55'18.978"W	0.00	
16222.00†	90.000	270.014	6940.00	10330.91	1098.85	-10272.54	40°27'53.137"N	104°55'20.272"W	0.00	
16322.00†	90.000	270.014	6940.00	10430.41	1098.88	-10372.54	40°27'53.137"N	104°55'21.566"W	0.00	
16422.00†	90.000	270.014	6940.00	10529.92	1098.90	-10472.54	40°27'53.137"N	104°55'22.859"W	0.00	
16522.00†	90.000	270.014	6940.00	10629.42	1098.93	-10572.54	40°27'53.137"N	104°55'24.153"W	0.00	
16622.00†	90.000	270.014	6940.00	10728.93	1098.95	-10672.54	40°27'53.137"N	104°55'25.447"W	0.00	
16722.00†	90.000	270.014	6940.00	10828.43	1098.98	-10772.54	40°27'53.136"N	104°55'26.741"W	0.00	
16822.00†	90.000	270.014	6940.00	10927.93	1099.01	-10872.54	40°27'53.136"N	104°55'28.034"W	0.00	
16918.28	90.000	270.014	6940.00 ²	11023.73	1099.03	-10968.81	40°27'53.136"N	104°55'29.280"W	0.00	End of Tangent



Planned Wellpath Report

KODAK 3 PWP (REV-B.0)

Page 8 of 9



REFERENCE WELLPATH IDENTIFICATION

Operator	EXTRACTION OIL & GAS	Slot	SLOT#02 KODAK 3 (1245'FNL & 1043'FWL, SEC.27)
Area	COLORADO	Well	KODAK 3
Field	WELD COUNTY (NAD83/TRUE NORTH)	Wellbore	KODAK 3 PWB
Facility	SEC.27-T06N-R67W		

HOLE & CASING SECTIONS - Ref Wellbore: KODAK 3 PWB Ref Wellpath: KODAK 3 PWP (REV-B.0)

String/Diameter	Start MD [ft]	End MD [ft]	Interval [ft]	Start TVD [ft]	End TVD [ft]	Start N/S [ft]	Start E/W [ft]	End N/S [ft]	End E/W [ft]
7in Casing Intermediate	22.00	7449.26	7427.26	22.00	6940.00	0.00	0.00	1096.64	-1499.80

TARGETS

Name	MD [ft]	TVD [ft]	North [ft]	East [ft]	Grid East [US ft]	Grid North [US ft]	Latitude	Longitude	Shape
SEC.27-T6N-R67W		0.00	14.57	0.00	3171020.64	1411663.14	40°27'42.444"N	104°53'07.368"W	polygon
SEC.28-T6N-R67W		0.00	14.57	0.00	3171020.64	1411663.14	40°27'42.444"N	104°53'07.368"W	polygon
SEC.29-T6N-R67W		0.00	14.57	0.00	3171020.64	1411663.14	40°27'42.444"N	104°53'07.368"W	polygon
2) KODAK 3 BHL ON PLAT REV-2 (97'FNL & 460'FWL, SEC.29)	16918.28	6940.00	1099.03	-10968.81	3160045.00	1412671.51	40°27'53.136"N	104°55'29.280"W	point
KODAK 3 DRILLING CORRIDOR (60')		6940.00	0.00	0.00	3171020.75	1411648.57	40°27'42.300"N	104°53'07.368"W	polygon
1) KODAK 3 LANDING POINT REV-2	7449.26	6940.00	1096.64	-1499.79	3169513.44	1412734.74	40°27'53.136"N	104°53'26.772"W	point

SURVEY PROGRAM - Ref Wellbore: KODAK 3 PWB Ref Wellpath: KODAK 3 PWP (REV-B.0)

Start MD [ft]	End MD [ft]	Positional Uncertainty Model	Log Name/Comment	Wellbore
22.00	17000.00	NaviTrak (Standard)		KODAK 3 PWB



Planned Wellpath Report

KODAK 3 PWP (REV-B.0)

Page 9 of 9



REFERENCE WELLPATH IDENTIFICATION

Operator	EXTRACTION OIL & GAS	Slot	SLOT#02 KODAK 3 (1245'FNL & 1043'FWL, SEC.27)
Area	COLORADO	Well	KODAK 3
Field	WELD COUNTY (NAD83/TRUE NORTH)	Wellbore	KODAK 3 PWB
Facility	SEC.27-T06N-R67W		

DESIGN COMMENTS

MD [ft]	Inclination [°]	Azimuth [°]	TVD [ft]	Comment
22.00	0.000	340.000	22.00	Tie On
200.00	0.000	340.000	200.00	End of Tangent
300.00	1.000	340.000	299.99	End of Build
850.09	1.000	340.000	850.00	End of Tangent
1300.09	10.000	340.000	1297.47	End of Build
1800.09	10.000	340.000	1789.87	End of Tangent
2176.74	15.151	314.003	2157.65	End of 3D Arc
6657.65	15.151	314.003	6482.80	End of Tangent
7449.26	90.000	270.014	6940.00	End of 3D Arc
16918.28	90.000	270.014	6940.00	End of Tangent