

NOBLE ENERGY INC.
STATE A36-10
NWSE 36-6N-64W
1980 FSL & 1980 FEL
WELD COUNTY, CO
Wattenberg
CURRENT WELLBORE SCHEMATIC
with PROPOSED P&A
2/6/2015

API: 05-123-14791
COGCC #

GL Elev: 4623'
KB Elev: 4633'

Spud Date: 10/25/1990

Surface Casing :

8 5/8" 24# @ 315'

Cement: 325

TOC: Surface

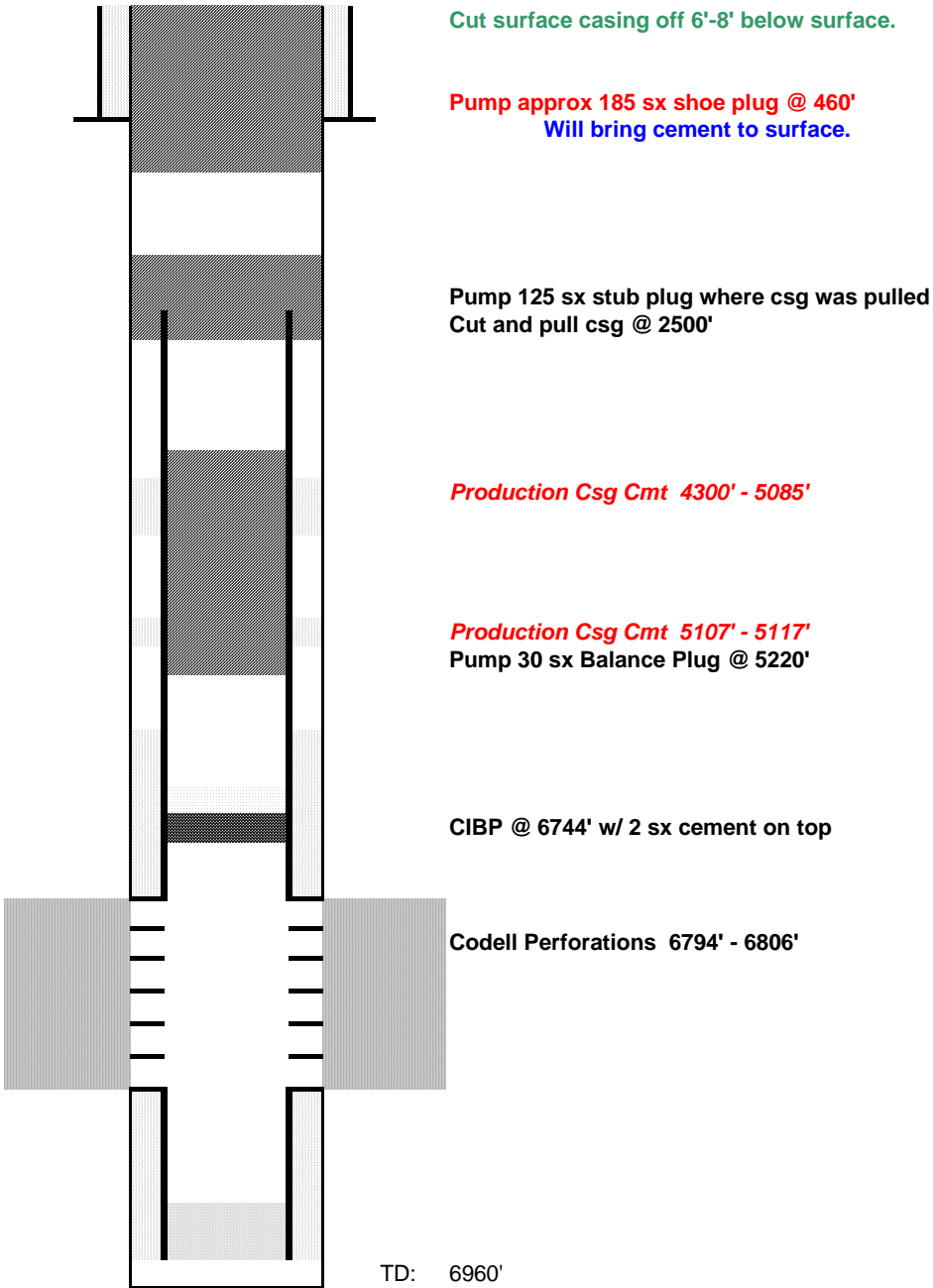
Production Casing :

2 7/8" 6.5# @ 6932'

Cement: 375

TD: 10/29/1990

TOC @ 5350'



TD: 6960'