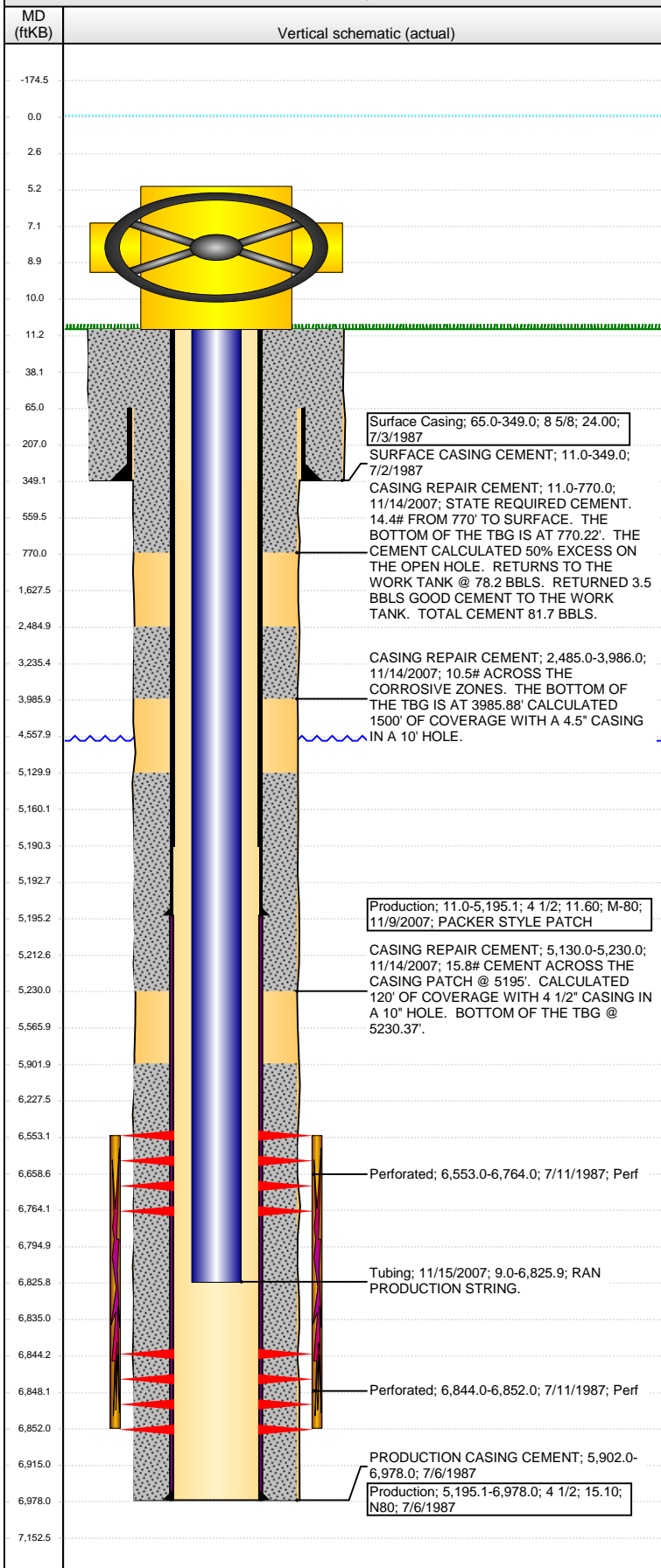


**Well Name: PETRIKIN A34-15**

VERTICAL - ORIGINAL HOLE, 2/6/2015 7:57:49 AM



## Well Header

API	Business Unit	District	Well Config
05-123-13518	DJ BASIN	15	VERTICAL
Original KB Elevation (ft)	KB - GL / MSL (ftKB)	Spud Date	P & A Date
4,646.00	11.00	7/3/1987	

## Comment

ANNULAR FILL - CASING REPAIR 11/2007

## Directions To Well

## Congressional Location

Quarter 1	Quarter 2	Quarter 3	Quarter 4	Section	Township	Twnshp N...	Range	Rng E/W Dir
		SW	SE	34	6	N	64	W

## Bottom Hole Location

North-South Distance (ft)	From N or S Line	East-West Distance (ft)	From E or W Line
---------------------------	------------------	-------------------------	------------------

## Plug Back Total Depths

Date	Depth (ftKB)	Method	Com
7/11/1987	9.0	CASED HOLE LOG	DEPTH LOGGER - CBL

## Wellbore Sections

Section Des	Size (in)	Act Top, MD (ftKB)	Act Btm, MD (ftKB)
Surface	12 1/4	11.0	349.0
Production	7 7/8	349.0	6,978.0

## Zone Statuses

Zone Name	Status Date	Status	Job
NIOBRARA	7/21/1987	PR	DRILLING/COMPLETION - ORIGINAL, 7/3/1987 00:00
CODELL	7/21/1987	PR	DRILLING/COMPLETION - ORIGINAL, 7/3/1987 00:00

## Casing Strings

### Surface Casing, 349.0ftKB

Casing Description	Run Date	OD (in)	Wt/Len (l...)	Grade	Top, MD (ft...)	MD (ftKB)
Surface Casing	7/3/1987	8 5/8	24.00		65.0	349.0

### Production, 5,195.1ftKB

Casing Description	Run Date	OD (in)	Wt/Len (l...)	Grade	Top, MD (ft...)	MD (ftKB)
Production	11/9/2007	4 1/2	11.60	M-80	11.0	5,195.1

### Production, 6,978.0ftKB

Casing Description	Run Date	OD (in)	Wt/Len (l...)	Grade	Top, MD (ft...)	MD (ftKB)
Production	7/6/1987	4 1/2	15.10	N80	0.0	6,978.0

## Cement

Description	Top Depth (ftKB)	Bottom Depth (ftKB)
SURFACE CASING CEMENT	11.0	349.0
PRODUCTION CASING CEMENT	5,902.0	6,978.0
CASING REPAIR CEMENT	11.0	770.0
CASING REPAIR CEMENT	2,485.0	3,986.0
CASING REPAIR CEMENT	5,130.0	5,230.0

## Tubing Strings

Tubing Description	Run Date	String...	ID (in)	Wt (lb/ft)	Grade	Len (ft)	Set De...
Tubing	9/2/1998	2 3/8		4.70	J55	6,839.00	
Tubing	11/15/2007	2 3/8	1.995	4.70	J-55	6,816.93	

## Tubing Components

Item Des	OD (in)	Wt (lb/ft)	Grade	Jts	Len (ft)	Btm (ftKB)	Btm (TVD) (ftKB)
Tubing	2 3/8	4.70	J-55	221	6,816.93	6,825.9	

## Perforation Data

Zone	Bnch/St g	Entered Shot Total	Top (ftKB)	Btm (ftKB)	Date
NIOBRARA, ORIGINAL HOLE		10	6,553.00	6,764.00	7/11/1987
CODELL, ORIGINAL HOLE		5	6,844.00	6,852.00	7/11/1987

## Stimulations & Treatments

Date	Zone	Primary Job Type
7/14/1987	NIOBRARA-CODELL, ORIGINAL HOLE	DRILLING/COMPLETION - ORIGINAL
Technical Result	Tech Result Details	Tech Result Note

## Comment

**Well Name: PETRIKIN A34-15**

VERTICAL - ORIGINAL HOLE, 2/6/2015 7:57:52 AM

## Other In Hole

Run Date	Des	OD (in)	Top (ftKB)	Btm (ftKB)

## Logs

Date	Type	Top, MD (ftKB)	Btm, MD (ftKB)
7/6/1987	COMPENSATED DENSITY	3,500.0	6,998.0
7/6/1987	INDUCTION	295.0	6,995.0
7/11/1987	CBL/CCL/GR	5,485.0	6,915.0
11/15/2007	CBL/CCL/GR	11.0	5,400.0
3/12/2014	GYRO	11.0	6,700.0

