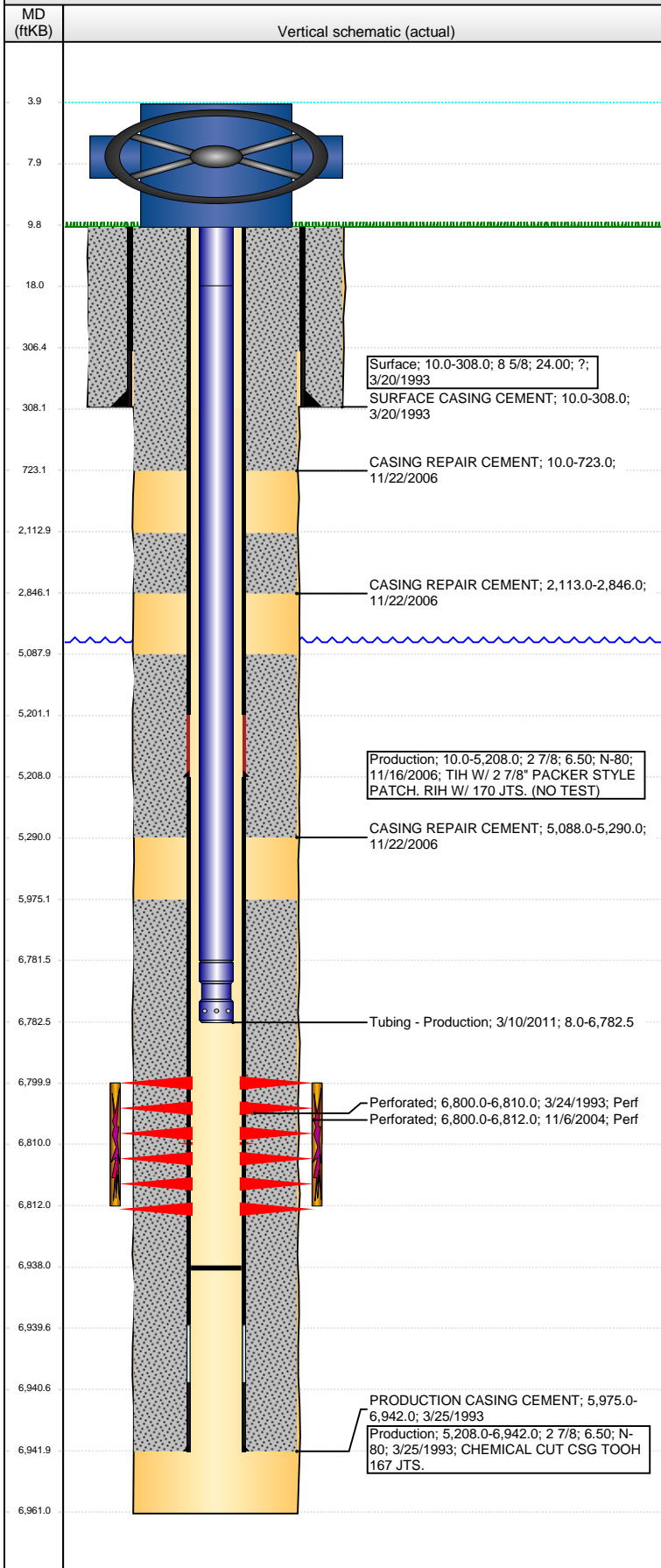


**Well Name:** STATE A36-05

VERTICAL - ORIGINAL HOLE, 2/5/2015 3:28:16 PM



## Well Header

API	Business Unit	District	Well Config
05-123-16901	DJ BASIN	15	VERTICAL
Original KB Elevation (ft)	KB - GL / MSL (ftKB)	Spud Date	P & A Date
4,633.00	10.00	3/20/1993	
Comment			
CSG REPAIR '06 PATCH @ 5208'. (NO TEST)			
Directions To Well			
WCR 59 & WCR 62. N 0.5 MILES, E 0.2 MILES, N 0.1 MILES INTO LOCATION			
Congressional Location			
Quarter 1	Quarter 2	Quarter 3	Quarter 4
		SW	NW
Section	Township	Twnshp N...	Range
36	6	N	64
Rng E/W Dir			
W			

## Bottom Hole Location

North-South Distance (ft)	From N or S Line	East-West Distance (ft)	From E or W Line

## Plug Back Total Depths

Date	Depth (ftKB)	Method	Com
3/25/1993	6,938.0	CASING TALLY	FLOAT SHOE W/ BAFFLE
4/3/1993	6,918.0	CASED HOLE LOG	DEPTH LOGGER ON CBL
11/27/2006	6,938.0	TAG	CLEAN OUT

## Wellbore Sections

Section Des	Size (in)	Act Top, MD (ftKB)	Act Btm, MD (ftKB)
SURFACE	12 1/4	10.0	308.0
PRODUCTION	7 7/8	308.0	6,961.0

## Zone Statuses

Zone Name	Status Date	Status	Job
CODELL	6/9/1993	PR	DRILLING/COMPLETION - ORIGINAL, 3/20/1993 00:00
CODELL	11/15/2004	PR	RE-FRAC, 11/1/2004 00:00
CODELL	12/1/2006	PR	CASING REPAIR, 8/30/2006 00:00

## Casing Strings

### Surface, 308.0ftKB

Casing Description	Run Date	OD (in)	Wt/Len (l...)	Grade	Top, MD (ft...)	MD (ftKB)
Surface	3/20/1993	8 5/8	24.00	?	10.0	308.0

### Production, 5,208.0ftKB

Casing Description	Run Date	OD (in)	Wt/Len (l...)	Grade	Top, MD (ft...)	MD (ftKB)
Production	11/16/2006	2 7/8	6.50	N-80	10.0	5,208.0

### Production, 6,942.0ftKB

Casing Description	Run Date	OD (in)	Wt/Len (l...)	Grade	Top, MD (ft...)	MD (ftKB)
Production	3/25/1993	2 7/8	6.50	N-80	10.0	6,942.0

## Cement

Description	Top Depth (ftKB)	Bottom Depth (ftKB)
SURFACE CASING CEMENT	10.0	308.0
PRODUCTION CASING CEMENT	5,975.0	6,942.0
CASING REPAIR CEMENT	10.0	723.0
CASING REPAIR CEMENT	2,113.0	2,846.0
CASING REPAIR CEMENT	5,088.0	5,290.0

## Tubing Strings

Tubing Description	Run Date	String...	ID (in)	Wt (lb/ft)	Grade	Len (ft)	Set De...
Tubing	11/28/2006	6					
Tubing Description	Run Date	String...	ID (in)	Wt (lb/ft)	Grade	Len (ft)	Set De...
Tubing - Production	3/10/2011	1.66	1.380	2.30	J-55	6,774.46	

## Tubing Components

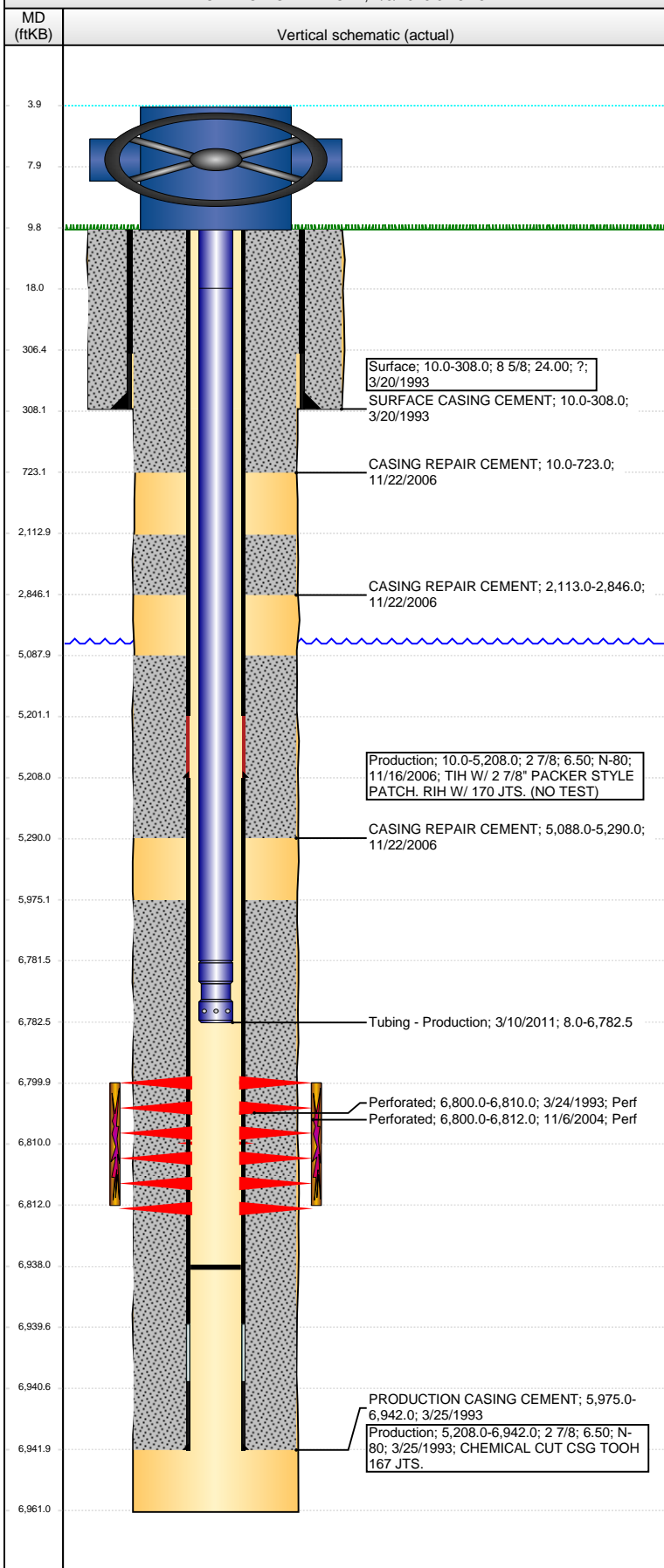
Item Des	OD (in)	Wt (lb/ft)	Grade	Jts	Len (ft)	Btm (ftKB)	Btm (TVD) (ftKB)
Tubing	1.66	2.30	J-55	1	10.00	18.0	
Tubing	1.66	2.30	J-55	205	6,763.36	6,781.4	
Notched Seating Nipple	1.66		J-55	1	1.10	6,782.5	

## Perforation Data

Zone	Bnch/St g	Entered Shot Total	Top (ftKB)	Btm (ftKB)	Date
CODELL, ORIGINAL HOLE		40	6,800.00	6,810.00	3/24/1993
CODELL, ORIGINAL HOLE		48	6,800.00	6,812.00	11/6/2004

**Well Name: STATE A36-05**

VERTICAL - ORIGINAL HOLE, 2/5/2015 3:28:18 PM



## Stimulations & Treatments

Date	Zone	Primary Job Type
4/3/1993	CODELL, ORIGINAL HOLE	
Technical Result	Tech Result Details	Tech Result Note
Comment		
Date	Zone	Primary Job Type
11/8/2004	CODELL, ORIGINAL HOLE	
Technical Result	Tech Result Details	Tech Result Note
Comment		

## Other In Hole

Run Date	Des	OD (in)	Top (ftKB)	Btm (ftKB)

## Logs

Date	Type	Top, MD (ftKB)	Btm, MD (ftKB)
3/25/1993	COMPENSATED DENSITY	6,100.0	6,960.0
3/25/1993	INDUCTION	6,100.0	6,960.0
4/3/1993	CEMENT BOND	5,870.0	6,913.0
11/27/2006	CEMENT BOND	0.0	5,423.0
3/9/2011	GYRO	10.0	6,900.0