



Southwestern Energy

Moffat County, Colorado (NAD-83)

Diamond T Sheep

7-92 2-26H35

OH

Plan: Plan #5

Standard Planning Report

30 January, 2015

WELL DETAILS: 7-92 2-26H35

Rig Name:		Original Well Elev		RKB = 22' @ 6701.00usft (Original Well Elev)	
		Ground Level:		6679.00	
+N/-S	+E/-W	Northing	Easting	Latitude	Longitude
0.00	0.00	1445029.56	2390469.01	40.534315	-107.693108

SECTION DETAILS

Sec	MD	Inc	Azi	TVD	+N/-S	+E/-W	Dleg	TFace	Vsect	Target
1	0.00	0.00	0.00	0.00	0.00	0.00	0.00	0.00	0.00	
2	8714.38	0.00	0.00	8714.38	0.00	0.00	0.00	0.00	0.00	
3	9714.38	90.00	179.68	9351.00	-636.61	3.59	9.00	179.68	636.62	
4	14442.14	90.00	179.68	9351.00	-5364.29	30.29	0.00	0.00	5364.38	Diamond T Sheep 7-92 2-26H35: PBHL

DESIGN TARGET DETAILS

Name	TVD	+N/-S	+E/-W	Northing	Easting	Latitude	Longitude	Shape
Diamond T Sheep 7-92 2-26H35: LP	9351.00	-636.61	3.59	1444392.95	2390472.60	40.532568	-107.693039	Point
Diamond T Sheep 7-92 2-26H35: PBHL	9351.00	-5364.29	30.29	1439665.27	2390499.30	40.519597	-107.692522	Point



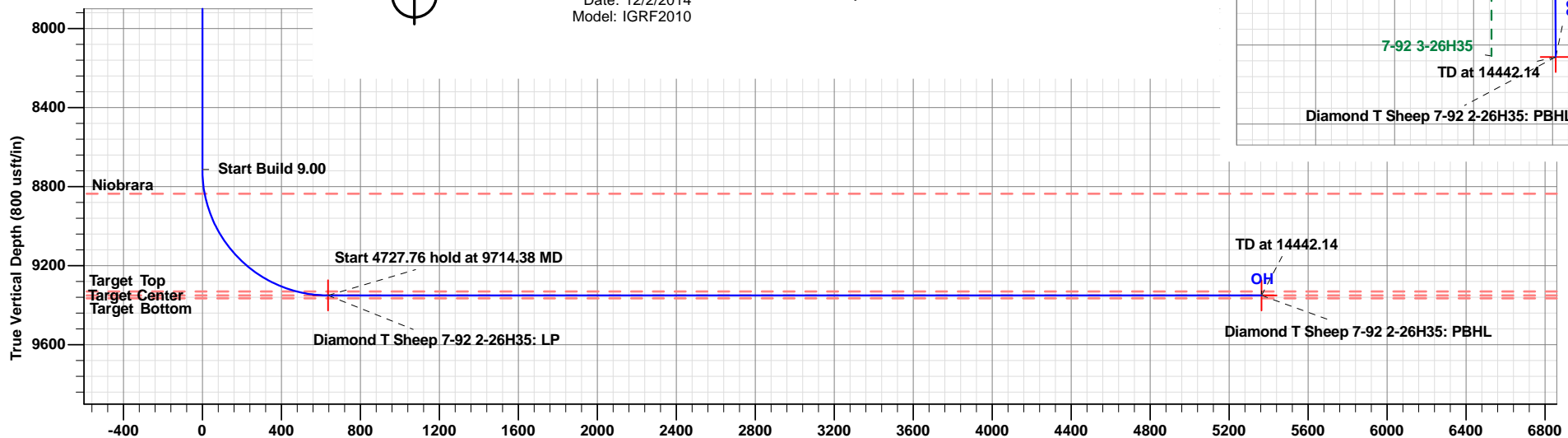
Azimuths to Grid North
True North: 1.42°
Magnetic North: 11.30°

Magnetic Field
Strength: 52489.1nT
Dip Angle: 66.54°
Date: 12/2/2014
Model: IGRF2010

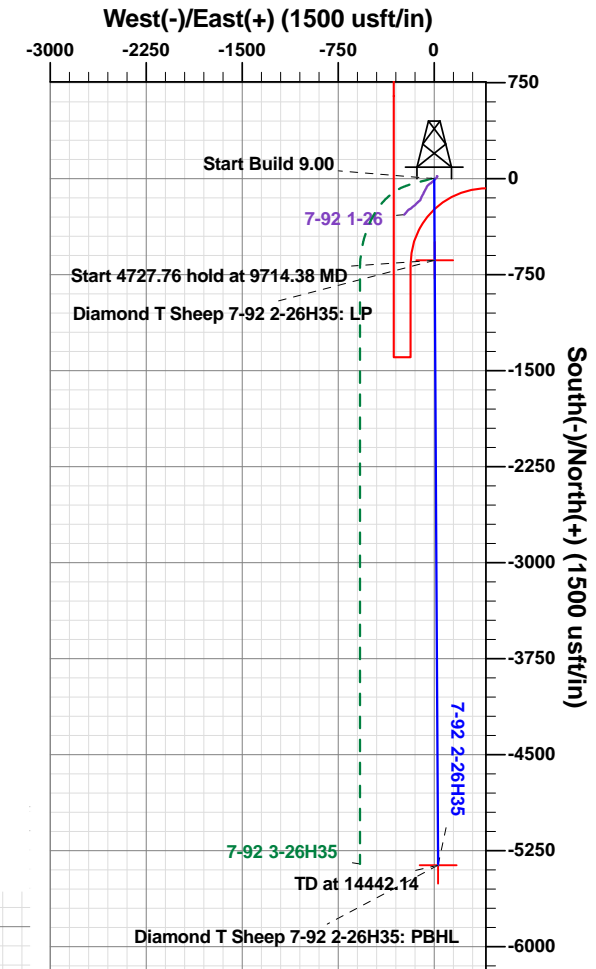
PROJECT DETAILS: Moffat County, Colorado (NAD-83)

Geodetic System: US State Plane 1983
Datum: North American Datum 1983
Ellipsoid: GRS 1980
Zone: Colorado Northern Zone

System Datum: Mean Sea Level



Vertical Section at 179.68° (800 usft/in)



Plan: Plan #5 (7-92 2-26H35/OH)

Created By: Well Planner Date: 7:44, January 30 2015

Database:	Single User DB Primary	Local Co-ordinate Reference:	Well 7-92 2-26H35
Company:	Southwestern Energy	TVD Reference:	RKB = 22' @ 6701.00usft (Original Well Elev)
Project:	Moffat County, Colorado (NAD-83)	MD Reference:	RKB = 22' @ 6701.00usft (Original Well Elev)
Site:	Diamond T Sheep	North Reference:	Grid
Well:	7-92 2-26H35	Survey Calculation Method:	Minimum Curvature
Wellbore:	OH		
Design:	Plan #5		

Project	Moffat County, Colorado (NAD-83)		
Map System:	US State Plane 1983	System Datum:	Mean Sea Level
Geo Datum:	North American Datum 1983		
Map Zone:	Colorado Northern Zone		

Site		Diamond T Sheep			
Site Position: From: Position Uncertainty:		Northing:	1,445,017.42 usft	Latitude:	40.534283
	Lat/Long	Easting:	2,390,487.91 usft	Longitude:	-107.693039
	0.00 usft	Slot Radius:	13-3/16 "	Grid Convergence:	-1.42

Well	7-92 2-26H35					
Well Position	+N-S	12.15 usft	Northing:	1,445,029.56 usft	Latitude:	40.534315
	+E-W	-18.90 usft	Easting:	2,390,469.01 usft	Longitude:	-107.693108
Position Uncertainty		0.00 usft	Wellhead Elevation:		Ground Level:	6,679.00 usft

Wellbore	OH				
Magnetics	Model Name	Sample Date	Declination (°)	Dip Angle (°)	Field Strength (nT)
	IGRF2010	12/2/2014	9.89	66.54	52,489

Design	Plan #5			
Audit Notes:				
Version:	Phase:	PLAN	Tie On Depth:	0.00
Vertical Section:	Depth From (TVD) (usft)	+N/-S (usft)	+E/-W (usft)	Direction (°)
	0.00	0.00	0.00	179.68

Plan Sections										
Measured Depth (usft)	Inclination (°)	Azimuth (°)	Vertical Depth (usft)	+N/-S (usft)	+E/-W (usft)	Dogleg Rate (°/100usft)	Build Rate (°/100usft)	Turn Rate (°/100usft)	TFO (°)	Target
0.00	0.00	0.00	0.00	0.00	0.00	0.00	0.00	0.00	0.00	
8,714.38	0.00	0.00	8,714.38	0.00	0.00	0.00	0.00	0.00	0.00	
9,714.38	90.00	179.68	9,351.00	-636.61	3.59	9.00	9.00	0.00	179.68	
14,442.14	90.00	179.68	9,351.00	-5,364.29	30.29	0.00	0.00	0.00	0.00	Diamond T Sheep 7

Database:	Single User DB Primary	Local Co-ordinate Reference:	Well 7-92 2-26H35
Company:	Southwestern Energy	TVD Reference:	RKB = 22' @ 6701.00usft (Original Well Elev)
Project:	Moffat County, Colorado (NAD-83)	MD Reference:	RKB = 22' @ 6701.00usft (Original Well Elev)
Site:	Diamond T Sheep	North Reference:	Grid
Well:	7-92 2-26H35	Survey Calculation Method:	Minimum Curvature
Wellbore:	OH		
Design:	Plan #5		

Planned Survey									
Measured Depth (usft)	Inclination (°)	Azimuth (°)	Vertical Depth (usft)	+N/-S (usft)	+E/-W (usft)	Vertical Section (usft)	Dogleg Rate (°/100usft)	Build Rate (°/100usft)	Turn Rate (°/100usft)
0.00	0.00	0.00	0.00	0.00	0.00	0.00	0.00	0.00	0.00
100.00	0.00	0.00	100.00	0.00	0.00	0.00	0.00	0.00	0.00
200.00	0.00	0.00	200.00	0.00	0.00	0.00	0.00	0.00	0.00
300.00	0.00	0.00	300.00	0.00	0.00	0.00	0.00	0.00	0.00
400.00	0.00	0.00	400.00	0.00	0.00	0.00	0.00	0.00	0.00
500.00	0.00	0.00	500.00	0.00	0.00	0.00	0.00	0.00	0.00
600.00	0.00	0.00	600.00	0.00	0.00	0.00	0.00	0.00	0.00
700.00	0.00	0.00	700.00	0.00	0.00	0.00	0.00	0.00	0.00
800.00	0.00	0.00	800.00	0.00	0.00	0.00	0.00	0.00	0.00
900.00	0.00	0.00	900.00	0.00	0.00	0.00	0.00	0.00	0.00
1,000.00	0.00	0.00	1,000.00	0.00	0.00	0.00	0.00	0.00	0.00
1,100.00	0.00	0.00	1,100.00	0.00	0.00	0.00	0.00	0.00	0.00
1,200.00	0.00	0.00	1,200.00	0.00	0.00	0.00	0.00	0.00	0.00
1,300.00	0.00	0.00	1,300.00	0.00	0.00	0.00	0.00	0.00	0.00
1,400.00	0.00	0.00	1,400.00	0.00	0.00	0.00	0.00	0.00	0.00
1,500.00	0.00	0.00	1,500.00	0.00	0.00	0.00	0.00	0.00	0.00
1,600.00	0.00	0.00	1,600.00	0.00	0.00	0.00	0.00	0.00	0.00
1,700.00	0.00	0.00	1,700.00	0.00	0.00	0.00	0.00	0.00	0.00
1,800.00	0.00	0.00	1,800.00	0.00	0.00	0.00	0.00	0.00	0.00
1,900.00	0.00	0.00	1,900.00	0.00	0.00	0.00	0.00	0.00	0.00
2,000.00	0.00	0.00	2,000.00	0.00	0.00	0.00	0.00	0.00	0.00
2,100.00	0.00	0.00	2,100.00	0.00	0.00	0.00	0.00	0.00	0.00
2,200.00	0.00	0.00	2,200.00	0.00	0.00	0.00	0.00	0.00	0.00
2,300.00	0.00	0.00	2,300.00	0.00	0.00	0.00	0.00	0.00	0.00
2,400.00	0.00	0.00	2,400.00	0.00	0.00	0.00	0.00	0.00	0.00
2,500.00	0.00	0.00	2,500.00	0.00	0.00	0.00	0.00	0.00	0.00
2,600.00	0.00	0.00	2,600.00	0.00	0.00	0.00	0.00	0.00	0.00
2,700.00	0.00	0.00	2,700.00	0.00	0.00	0.00	0.00	0.00	0.00
2,800.00	0.00	0.00	2,800.00	0.00	0.00	0.00	0.00	0.00	0.00
2,900.00	0.00	0.00	2,900.00	0.00	0.00	0.00	0.00	0.00	0.00
3,000.00	0.00	0.00	3,000.00	0.00	0.00	0.00	0.00	0.00	0.00
3,100.00	0.00	0.00	3,100.00	0.00	0.00	0.00	0.00	0.00	0.00
3,200.00	0.00	0.00	3,200.00	0.00	0.00	0.00	0.00	0.00	0.00
3,300.00	0.00	0.00	3,300.00	0.00	0.00	0.00	0.00	0.00	0.00
3,400.00	0.00	0.00	3,400.00	0.00	0.00	0.00	0.00	0.00	0.00
3,500.00	0.00	0.00	3,500.00	0.00	0.00	0.00	0.00	0.00	0.00
3,600.00	0.00	0.00	3,600.00	0.00	0.00	0.00	0.00	0.00	0.00
3,700.00	0.00	0.00	3,700.00	0.00	0.00	0.00	0.00	0.00	0.00
3,800.00	0.00	0.00	3,800.00	0.00	0.00	0.00	0.00	0.00	0.00
3,900.00	0.00	0.00	3,900.00	0.00	0.00	0.00	0.00	0.00	0.00
4,000.00	0.00	0.00	4,000.00	0.00	0.00	0.00	0.00	0.00	0.00
4,100.00	0.00	0.00	4,100.00	0.00	0.00	0.00	0.00	0.00	0.00
4,200.00	0.00	0.00	4,200.00	0.00	0.00	0.00	0.00	0.00	0.00
4,300.00	0.00	0.00	4,300.00	0.00	0.00	0.00	0.00	0.00	0.00
4,400.00	0.00	0.00	4,400.00	0.00	0.00	0.00	0.00	0.00	0.00
4,500.00	0.00	0.00	4,500.00	0.00	0.00	0.00	0.00	0.00	0.00
4,600.00	0.00	0.00	4,600.00	0.00	0.00	0.00	0.00	0.00	0.00
4,700.00	0.00	0.00	4,700.00	0.00	0.00	0.00	0.00	0.00	0.00
4,800.00	0.00	0.00	4,800.00	0.00	0.00	0.00	0.00	0.00	0.00
4,900.00	0.00	0.00	4,900.00	0.00	0.00	0.00	0.00	0.00	0.00
5,000.00	0.00	0.00	5,000.00	0.00	0.00	0.00	0.00	0.00	0.00
5,100.00	0.00	0.00	5,100.00	0.00	0.00	0.00	0.00	0.00	0.00
5,200.00	0.00	0.00	5,200.00	0.00	0.00	0.00	0.00	0.00	0.00
5,300.00	0.00	0.00	5,300.00	0.00	0.00	0.00	0.00	0.00	0.00

Database:	Single User DB Primary	Local Co-ordinate Reference:	Well 7-92 2-26H35
Company:	Southwestern Energy	TVD Reference:	RKB = 22' @ 6701.00usft (Original Well Elev)
Project:	Moffat County, Colorado (NAD-83)	MD Reference:	RKB = 22' @ 6701.00usft (Original Well Elev)
Site:	Diamond T Sheep	North Reference:	Grid
Well:	7-92 2-26H35	Survey Calculation Method:	Minimum Curvature
Wellbore:	OH		
Design:	Plan #5		

Planned Survey									
Measured Depth (usft)	Inclination (°)	Azimuth (°)	Vertical Depth (usft)	+N/-S (usft)	+E/-W (usft)	Vertical Section (usft)	Dogleg Rate (°/100usft)	Build Rate (°/100usft)	Turn Rate (°/100usft)
5,400.00	0.00	0.00	5,400.00	0.00	0.00	0.00	0.00	0.00	0.00
5,500.00	0.00	0.00	5,500.00	0.00	0.00	0.00	0.00	0.00	0.00
5,600.00	0.00	0.00	5,600.00	0.00	0.00	0.00	0.00	0.00	0.00
5,700.00	0.00	0.00	5,700.00	0.00	0.00	0.00	0.00	0.00	0.00
5,800.00	0.00	0.00	5,800.00	0.00	0.00	0.00	0.00	0.00	0.00
5,900.00	0.00	0.00	5,900.00	0.00	0.00	0.00	0.00	0.00	0.00
6,000.00	0.00	0.00	6,000.00	0.00	0.00	0.00	0.00	0.00	0.00
6,100.00	0.00	0.00	6,100.00	0.00	0.00	0.00	0.00	0.00	0.00
6,200.00	0.00	0.00	6,200.00	0.00	0.00	0.00	0.00	0.00	0.00
6,300.00	0.00	0.00	6,300.00	0.00	0.00	0.00	0.00	0.00	0.00
6,400.00	0.00	0.00	6,400.00	0.00	0.00	0.00	0.00	0.00	0.00
6,500.00	0.00	0.00	6,500.00	0.00	0.00	0.00	0.00	0.00	0.00
6,600.00	0.00	0.00	6,600.00	0.00	0.00	0.00	0.00	0.00	0.00
6,700.00	0.00	0.00	6,700.00	0.00	0.00	0.00	0.00	0.00	0.00
6,800.00	0.00	0.00	6,800.00	0.00	0.00	0.00	0.00	0.00	0.00
6,900.00	0.00	0.00	6,900.00	0.00	0.00	0.00	0.00	0.00	0.00
7,000.00	0.00	0.00	7,000.00	0.00	0.00	0.00	0.00	0.00	0.00
7,100.00	0.00	0.00	7,100.00	0.00	0.00	0.00	0.00	0.00	0.00
7,200.00	0.00	0.00	7,200.00	0.00	0.00	0.00	0.00	0.00	0.00
7,300.00	0.00	0.00	7,300.00	0.00	0.00	0.00	0.00	0.00	0.00
7,400.00	0.00	0.00	7,400.00	0.00	0.00	0.00	0.00	0.00	0.00
7,500.00	0.00	0.00	7,500.00	0.00	0.00	0.00	0.00	0.00	0.00
7,600.00	0.00	0.00	7,600.00	0.00	0.00	0.00	0.00	0.00	0.00
7,700.00	0.00	0.00	7,700.00	0.00	0.00	0.00	0.00	0.00	0.00
7,800.00	0.00	0.00	7,800.00	0.00	0.00	0.00	0.00	0.00	0.00
7,900.00	0.00	0.00	7,900.00	0.00	0.00	0.00	0.00	0.00	0.00
8,000.00	0.00	0.00	8,000.00	0.00	0.00	0.00	0.00	0.00	0.00
8,100.00	0.00	0.00	8,100.00	0.00	0.00	0.00	0.00	0.00	0.00
8,200.00	0.00	0.00	8,200.00	0.00	0.00	0.00	0.00	0.00	0.00
8,300.00	0.00	0.00	8,300.00	0.00	0.00	0.00	0.00	0.00	0.00
8,400.00	0.00	0.00	8,400.00	0.00	0.00	0.00	0.00	0.00	0.00
8,500.00	0.00	0.00	8,500.00	0.00	0.00	0.00	0.00	0.00	0.00
8,600.00	0.00	0.00	8,600.00	0.00	0.00	0.00	0.00	0.00	0.00
8,700.00	0.00	0.00	8,700.00	0.00	0.00	0.00	0.00	0.00	0.00
8,714.38	0.00	0.00	8,714.38	0.00	0.00	0.00	0.00	0.00	0.00
8,750.00	3.21	179.68	8,749.98	-1.00	0.01	1.00	9.00	9.00	0.00
8,800.00	7.71	179.68	8,799.74	-5.75	0.03	5.75	9.00	9.00	0.00
8,850.00	12.21	179.68	8,848.98	-14.39	0.08	14.39	9.00	9.00	0.00
8,900.00	16.71	179.68	8,897.38	-26.87	0.15	26.87	9.00	9.00	0.00
8,950.00	21.21	179.68	8,944.66	-43.11	0.24	43.11	9.00	9.00	0.00
9,000.00	25.71	179.68	8,990.51	-63.00	0.36	63.00	9.00	9.00	0.00
9,050.00	30.21	179.68	9,034.67	-86.44	0.49	86.44	9.00	9.00	0.00
9,100.00	34.71	179.68	9,076.85	-113.26	0.64	113.26	9.00	9.00	0.00
9,150.00	39.21	179.68	9,116.79	-143.31	0.81	143.32	9.00	9.00	0.00
9,200.00	43.71	179.68	9,154.26	-176.41	1.00	176.41	9.00	9.00	0.00
9,250.00	48.21	179.68	9,189.01	-212.34	1.20	212.34	9.00	9.00	0.00
9,300.00	52.71	179.68	9,220.83	-250.88	1.42	250.89	9.00	9.00	0.00
9,350.00	57.21	179.68	9,249.54	-291.81	1.65	291.81	9.00	9.00	0.00
9,400.00	61.71	179.68	9,274.94	-334.86	1.89	334.86	9.00	9.00	0.00
9,450.00	66.21	179.68	9,296.89	-379.77	2.14	379.77	9.00	9.00	0.00
9,500.00	70.71	179.68	9,315.24	-426.26	2.41	426.27	9.00	9.00	0.00
9,550.00	75.21	179.68	9,329.90	-474.05	2.68	474.06	9.00	9.00	0.00
9,600.00	79.71	179.68	9,340.75	-522.85	2.95	522.85	9.00	9.00	0.00
9,650.00	84.21	179.68	9,347.75	-572.34	3.23	572.35	9.00	9.00	0.00

Database:	Single User DB Primary	Local Co-ordinate Reference:	Well 7-92 2-26H35
Company:	Southwestern Energy	TVD Reference:	RKB = 22' @ 6701.00usft (Original Well Elev)
Project:	Moffat County, Colorado (NAD-83)	MD Reference:	RKB = 22' @ 6701.00usft (Original Well Elev)
Site:	Diamond T Sheep	North Reference:	Grid
Well:	7-92 2-26H35	Survey Calculation Method:	Minimum Curvature
Wellbore:	OH		
Design:	Plan #5		

Planned Survey										
Measured Depth (usft)	Inclination (°)	Azimuth (°)	Vertical Depth (usft)	+N/-S (usft)	+E/-W (usft)	Vertical Section (usft)	Dogleg Rate (°/100usft)	Build Rate (°/100usft)	Turn Rate (°/100usft)	
9,700.00	88.71	179.68	9,350.84	-622.23	3.51	622.24	9.00	9.00	0.00	
9,714.38	90.00	179.68	9,351.00	-636.61	3.59	636.62	9.00	9.00	0.00	
Diamond T Sheep 7-92 2-26H35: LP										
9,800.00	90.00	179.68	9,351.00	-722.23	4.08	722.24	0.00	0.00	0.00	
9,900.00	90.00	179.68	9,351.00	-822.23	4.64	822.24	0.00	0.00	0.00	
10,000.00	90.00	179.68	9,351.00	-922.22	5.21	922.24	0.00	0.00	0.00	
10,100.00	90.00	179.68	9,351.00	-1,022.22	5.77	1,022.24	0.00	0.00	0.00	
10,200.00	90.00	179.68	9,351.00	-1,122.22	6.34	1,122.24	0.00	0.00	0.00	
10,300.00	90.00	179.68	9,351.00	-1,222.22	6.90	1,222.24	0.00	0.00	0.00	
10,400.00	90.00	179.68	9,351.00	-1,322.22	7.47	1,322.24	0.00	0.00	0.00	
10,500.00	90.00	179.68	9,351.00	-1,422.22	8.03	1,422.24	0.00	0.00	0.00	
10,600.00	90.00	179.68	9,351.00	-1,522.22	8.59	1,522.24	0.00	0.00	0.00	
10,700.00	90.00	179.68	9,351.00	-1,622.21	9.16	1,622.24	0.00	0.00	0.00	
10,800.00	90.00	179.68	9,351.00	-1,722.21	9.72	1,722.24	0.00	0.00	0.00	
10,900.00	90.00	179.68	9,351.00	-1,822.21	10.29	1,822.24	0.00	0.00	0.00	
11,000.00	90.00	179.68	9,351.00	-1,922.21	10.85	1,922.24	0.00	0.00	0.00	
11,100.00	90.00	179.68	9,351.00	-2,022.21	11.42	2,022.24	0.00	0.00	0.00	
11,200.00	90.00	179.68	9,351.00	-2,122.21	11.98	2,122.24	0.00	0.00	0.00	
11,300.00	90.00	179.68	9,351.00	-2,222.20	12.55	2,222.24	0.00	0.00	0.00	
11,400.00	90.00	179.68	9,351.00	-2,322.20	13.11	2,322.24	0.00	0.00	0.00	
11,500.00	90.00	179.68	9,351.00	-2,422.20	13.68	2,422.24	0.00	0.00	0.00	
11,600.00	90.00	179.68	9,351.00	-2,522.20	14.24	2,522.24	0.00	0.00	0.00	
11,700.00	90.00	179.68	9,351.00	-2,622.20	14.81	2,622.24	0.00	0.00	0.00	
11,800.00	90.00	179.68	9,351.00	-2,722.20	15.37	2,722.24	0.00	0.00	0.00	
11,900.00	90.00	179.68	9,351.00	-2,822.19	15.93	2,822.24	0.00	0.00	0.00	
12,000.00	90.00	179.68	9,351.00	-2,922.19	16.50	2,922.24	0.00	0.00	0.00	
12,100.00	90.00	179.68	9,351.00	-3,022.19	17.06	3,022.24	0.00	0.00	0.00	
12,200.00	90.00	179.68	9,351.00	-3,122.19	17.63	3,122.24	0.00	0.00	0.00	
12,300.00	90.00	179.68	9,351.00	-3,222.19	18.19	3,222.24	0.00	0.00	0.00	
12,400.00	90.00	179.68	9,351.00	-3,322.19	18.76	3,322.24	0.00	0.00	0.00	
12,500.00	90.00	179.68	9,351.00	-3,422.19	19.32	3,422.24	0.00	0.00	0.00	
12,600.00	90.00	179.68	9,351.00	-3,522.18	19.89	3,522.24	0.00	0.00	0.00	
12,700.00	90.00	179.68	9,351.00	-3,622.18	20.45	3,622.24	0.00	0.00	0.00	
12,800.00	90.00	179.68	9,351.00	-3,722.18	21.02	3,722.24	0.00	0.00	0.00	
12,900.00	90.00	179.68	9,351.00	-3,822.18	21.58	3,822.24	0.00	0.00	0.00	
13,000.00	90.00	179.68	9,351.00	-3,922.18	22.14	3,922.24	0.00	0.00	0.00	
13,100.00	90.00	179.68	9,351.00	-4,022.18	22.71	4,022.24	0.00	0.00	0.00	
13,200.00	90.00	179.68	9,351.00	-4,122.17	23.27	4,122.24	0.00	0.00	0.00	
13,300.00	90.00	179.68	9,351.00	-4,222.17	23.84	4,222.24	0.00	0.00	0.00	
13,400.00	90.00	179.68	9,351.00	-4,322.17	24.40	4,322.24	0.00	0.00	0.00	
13,500.00	90.00	179.68	9,351.00	-4,422.17	24.97	4,422.24	0.00	0.00	0.00	
13,600.00	90.00	179.68	9,351.00	-4,522.17	25.53	4,522.24	0.00	0.00	0.00	
13,700.00	90.00	179.68	9,351.00	-4,622.17	26.10	4,622.24	0.00	0.00	0.00	
13,800.00	90.00	179.68	9,351.00	-4,722.16	26.66	4,722.24	0.00	0.00	0.00	
13,900.00	90.00	179.68	9,351.00	-4,822.16	27.23	4,822.24	0.00	0.00	0.00	
14,000.00	90.00	179.68	9,351.00	-4,922.16	27.79	4,922.24	0.00	0.00	0.00	
14,100.00	90.00	179.68	9,351.00	-5,022.16	28.36	5,022.24	0.00	0.00	0.00	
14,200.00	90.00	179.68	9,351.00	-5,122.16	28.92	5,122.24	0.00	0.00	0.00	
14,300.00	90.00	179.68	9,351.00	-5,222.16	29.48	5,222.24	0.00	0.00	0.00	
14,400.00	90.00	179.68	9,351.00	-5,322.15	30.05	5,322.24	0.00	0.00	0.00	
14,442.14	90.00	179.68	9,351.00	-5,364.29	30.29	5,364.38	0.00	0.00	0.00	
Diamond T Sheep 7-92 2-26H35: PBHL										

Database:	Single User DB Primary	Local Co-ordinate Reference:	Well 7-92 2-26H35
Company:	Southwestern Energy	TVD Reference:	RKB = 22' @ 6701.00usft (Original Well Elev)
Project:	Moffat County, Colorado (NAD-83)	MD Reference:	RKB = 22' @ 6701.00usft (Original Well Elev)
Site:	Diamond T Sheep	North Reference:	Grid
Well:	7-92 2-26H35	Survey Calculation Method:	Minimum Curvature
Wellbore:	OH		
Design:	Plan #5		

Design Targets

Target Name

- hit/miss target	Dip Angle (°)	Dip Dir. (°)	TVD (usft)	+N/-S (usft)	+E/-W (usft)	Northing (usft)	Easting (usft)	Latitude	Longitude
- Shape									
Diamond T Sheep 7-9 - plan hits target center - Point	0.00	360.00	9,351.00	-636.61	3.59	1,444,392.95	2,390,472.60	40.532568	-107.693039
Diamond T Sheep 7-9 - plan hits target center - Point	0.00	360.00	9,351.00	-5,364.29	30.29	1,439,665.27	2,390,499.30	40.519597	-107.692522

Formations

Measured Depth (usft)	Vertical Depth (usft)	Name	Lithology	Dip (°)	Dip Direction (°)
2,331.00	2,331.00	Mesaverde Top			
3,149.00	3,149.00	20Mile SS			
4,008.00	4,008.00	Trout Creek (604 TRCK)			
5,533.00	5,533.00	Rimrock (604 RMRK)			
5,694.00	5,694.00	Mancos Shale (603 MNCS)			
8,836.75	8,836.00	Niobrara			
9,554.38	9,331.00	Target Top			
9,714.38	9,351.00	Target Center			