



Scale: 5" / 100'  
Measured Depth Log

**Well Name** GOODMAN POINT 16

**Location** 638 FNL & 632 FWL, SECTION 33 T37NR17W NMPM

**State** COLORADO

**County** MONTEZUMA

**Country** US

**Rig Number** AZTEC 449

**API Number** 05-083-06649

**AFE #** 67244

**Spud Date** 9/29/2014

**Field** McElmo Dome

**Surface Coordinates** 638 FNL & 632 FWL, SECTION 33 T37W NMPM

**Bottom Hole Coordinates** 352 FSL & 2368 FWL, SEC 28 T37N, R17W 60 deg asi from SHL  
200' max lateral extension

**Ground Elevation** 6734'

**K.B. Elevation** 6745'

**Logged Interval** 7917' **To** 8878'

**Total Depth** 8878'

**Formation** MOLAS/LEADVILLE

**Type of Drilling Fluid** FRESHWATER, UNDERBALANCE, NITROGEN MIST

## Other Symbols

### Oil Show

- DEAD
- EVEN
- QUESTIONABLE
- SPOTTED STAINING

### Porosity

- E EARTHY
- F FENESTRAL
- F FRACTURE
- X INTERCRYSTALLINE
- Q INTEROOLITIC

- MOLDIC
- ORGANIC
- PINPOINT
- VUGGY

### Engineering

- BIT
- CONNECTION (LEFT)
- CONNECTION (RIGHT)
- CONNECTION GAS
- CORE - LOST
- CORE - RECOVERED
- DST INTERVAL

- FAULT
- FORMATION TOP
- GAS SHOW
- MN DEPTH MN DEPTH
- NORMAL FAULT
- OIL SHOW
- OVERTURNED STRATA
- REVERSE FAULT
- SIDEWALL CORE (LEFT)
- SIDEWALL CORE (RIGHT)
- SLIDE
- SURVEY
- TRIP GAS

- WIRELINE TESTED - LEFT
- WIRELINE TESTED - RT

### Rounding

- ANGULAR
- ROUNDED
- SUBANG
- SUBRND

### Textures

- BOUNDSTONE
- CHALKY
- CRYPTOXLN

- E EARTHY
- FINELYXLN
- GRAINSTONE
- L LITHOGRAPHIC
- MICROXLN
- MUDSTONE
- PACKSTONE
- WACKSTONE

### Sorting

- MODERATE
- POOR
- WELL

## Zone Color Coding

- Oil
- Condensate
- Gas
- Note
- Core
- Pressure
- Error
- Water
- Seal

## Accessories

### Fossils

- ALGAE
- AMPHIPORA
- BELEMNITE
- BIOCLASTIC
- BRACHIOPOD

- FOSSIL
- GASTROPOD
- OOLITE
- OSTRACOD
- PELECYPOD
- PELLET
- PISOLITE

- ARGILLACEOUS
- ARGILLITE GRAIN
- BENTONITE
- BITUMENOUS SUBSTANCE
- BRECCIA FRAGMENTS
- CALCAREOUS
- CARBONACEOUS FLAKES

- GLAUCONITE
- GYPSIFEROUS
- HEAVY MINERAL
- KAOLIN
- MARLSTONE
- MINERAL CRYSTALS
- NODULES

### Stringer

- ANHYDRITE STRINGER
- BENTONITE STRINGER
- COAL STRINGER
- DOLOMITE STRINGER
- GYPSUM STRINGER

↑ BRYOZOA  
🐙 CEPHALOPOD  
🪸 CORAL  
🪼 CRINOID  
🐚 ECHINOID  
🐟 FISH  
🪼 FORAMINIFERA

🌿 PLANT REMAINS  
🍄 PLANT SPORES  
🐚 SCAPHOPOD  
🪼 STROMATOPOROID

## Minerals

⚡ ANHYDRITIC

⚡ CHTDK  
⚡ CHTLT  
— COAL - THIN BEDS  
🔪 DOLOMITIC  
+ FELDSPAR  
● FERRUGINOUS PELLET  
🔪 FERRUGINOUS

● PHOSPHATE PELLETS  
P PYRITE  
🧱 SALT CAST  
· SANDY  
^ SILICEOUS  
· SILTY  
✓ TUFFACEOUS

🧱 LIMESTONE STRINGER  
🧱 MARLSTONE (CALC) STRG  
🧱 MARLSTONE (DOL) STRG  
🧱 SANDSTONE STRINGER  
— SHALE STRINGER  
🧱 SILTSTONE STRINGER

## Operator

**Company** KINDER MORGAN

**Address** 17801 Hwy 491  
CORTEZ,COLORADO 81321

## Rock Types

🔍 UNKNOWN  
🧱 ANHYDRITE  
🧱 GYPSUM  
🧱 SALT  
🧱 SIDERITE or LIMONITE  
🧱 LIMESTONE

🧱 DOLOMITE  
🧱 CHERT  
■ COAL  
🧱 MARLSTONE  
🧱 CLAYSTONE  
🧱 SHALE

🧱 SHALE GRAY  
🧱 SHALE COLORED  
🧱 SILTSTONE  
🧱 SANDSTONE  
🧱 CONGLOMERATE  
🧱 BRECCIA

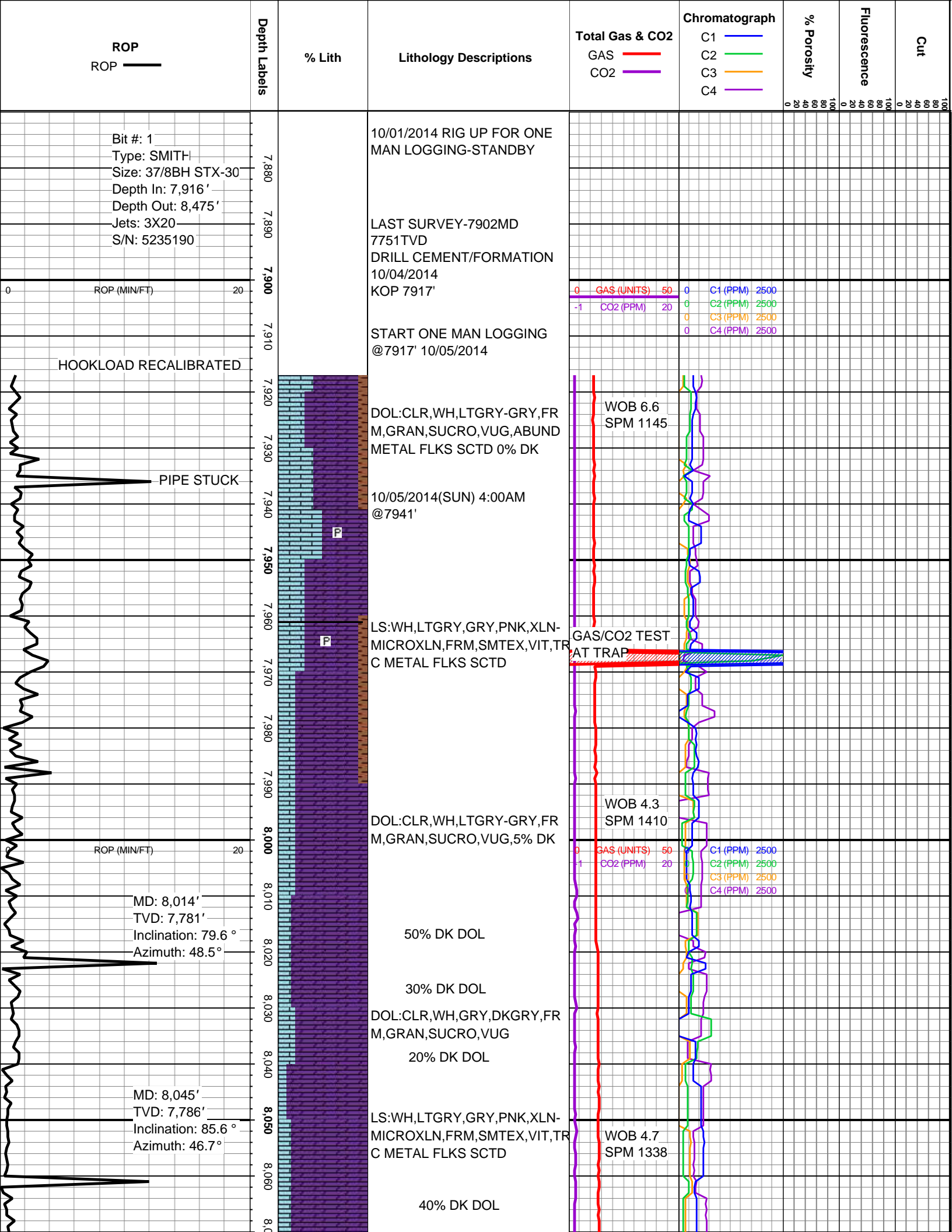
🧱 TILL  
🧱 BENTONITE  
🧱 TUFF  
🧱 IGNEOUS  
🧱 METAMORPHIC

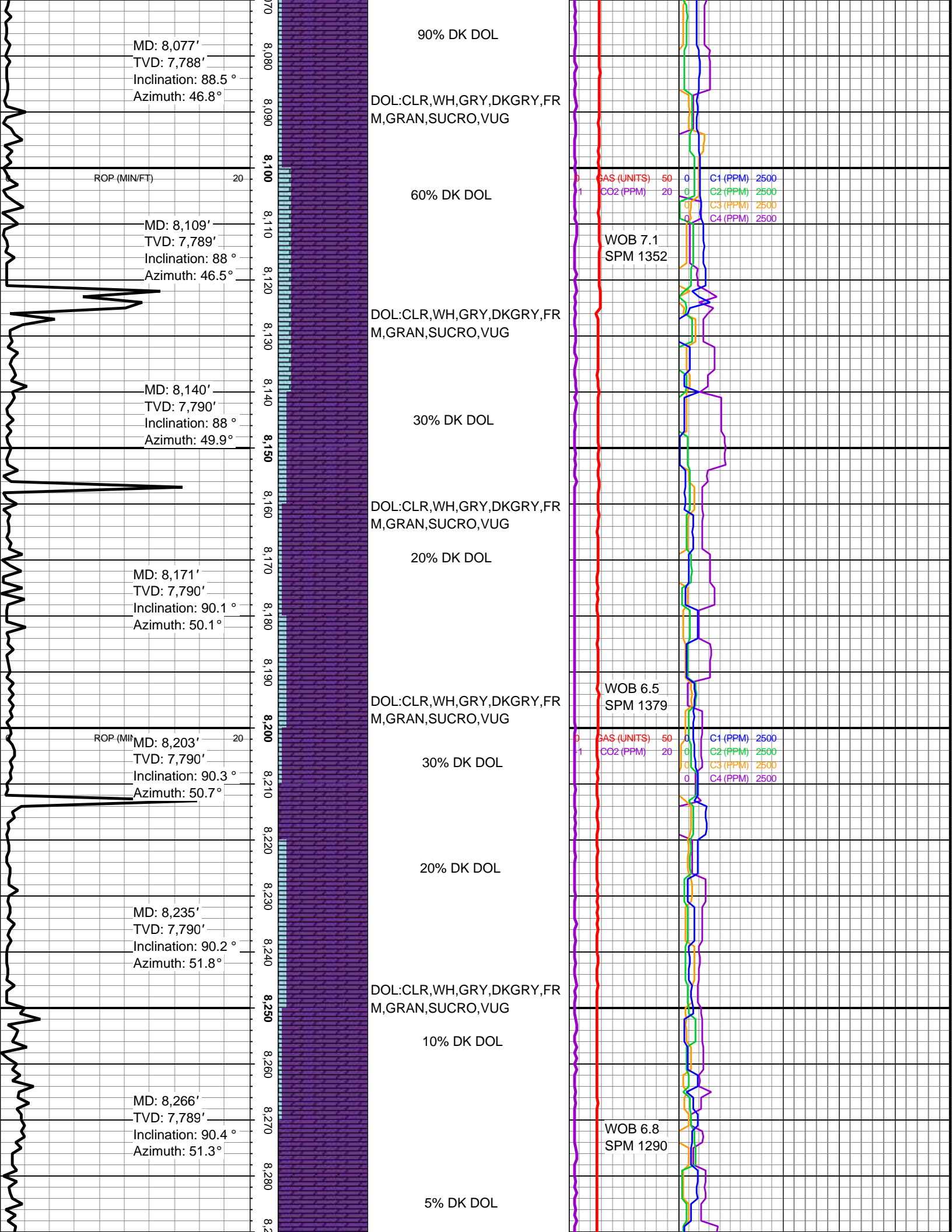
## Geologist

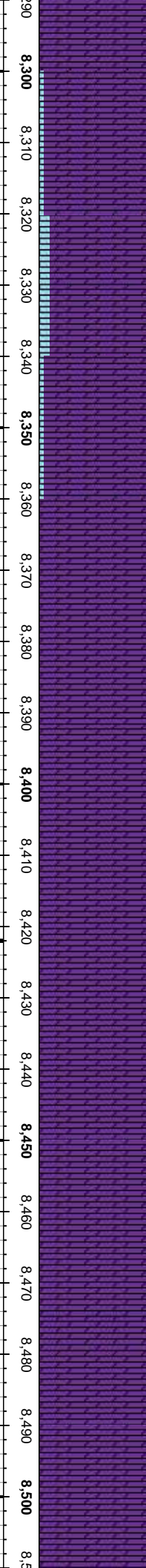
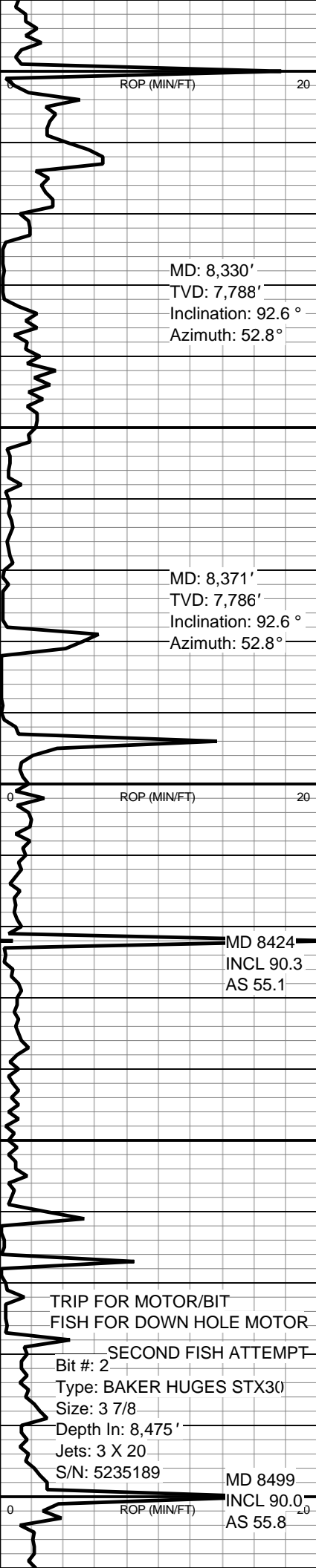
**Name** JAMES ROARK

**Company** ABOVE ENTERPRISE

**Address** 510 Old Lubbock Hwy  
SNYDER,TEXAS 79549







DOL:CLR,WH,GRY,DKGRY,FR  
M,GRAN,SUCRO,VUG

40% DK DOL

5% DK DOL

DOL:CLR,WH,GRY,DKGRY,FR  
M,GRAN,SUCRO,VUG

20% DK DOL

25% DK DOL

20% DK DOL

DOL:CLR,WH,GRY,DKGRY,FR  
M,GRAN,SUCRO,VUG

10/06/2014(MON) 4:00AM  
@8392"

10% DK DOL

5% DK DOL

DOL:CLR,WH,GRY,DKGRY,FR  
M,GRAN,SUCRO,VUG

5% DK DOL

10% DK DOL

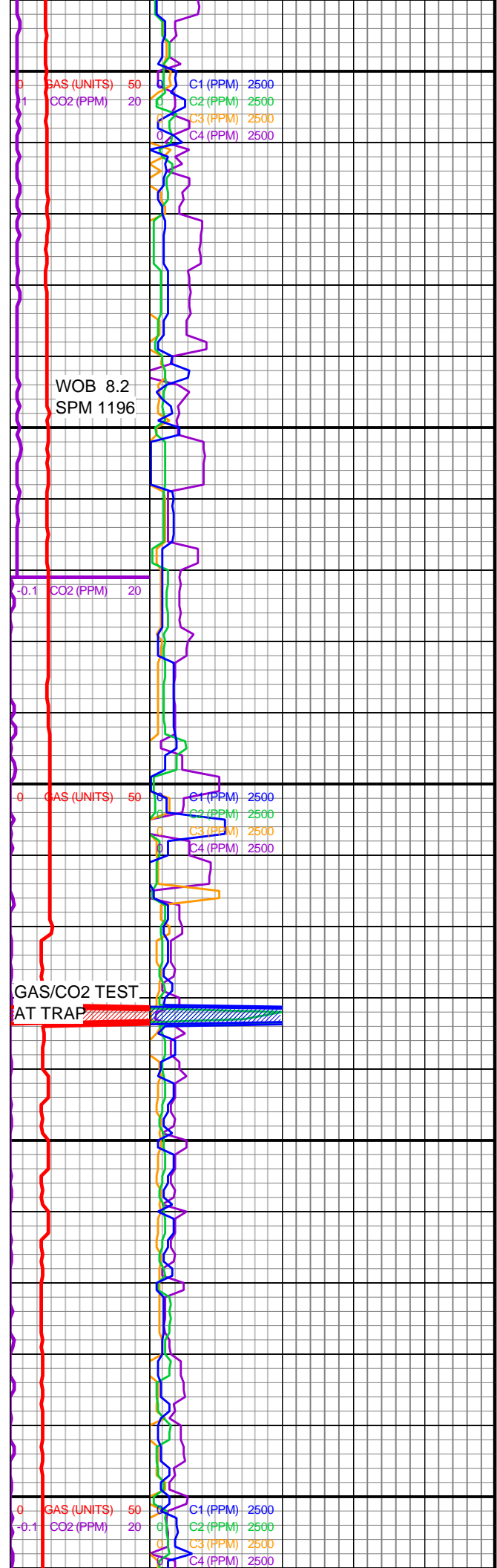
15% DK DOL

10/07/2014(TUES) 4:00AM  
@8475'

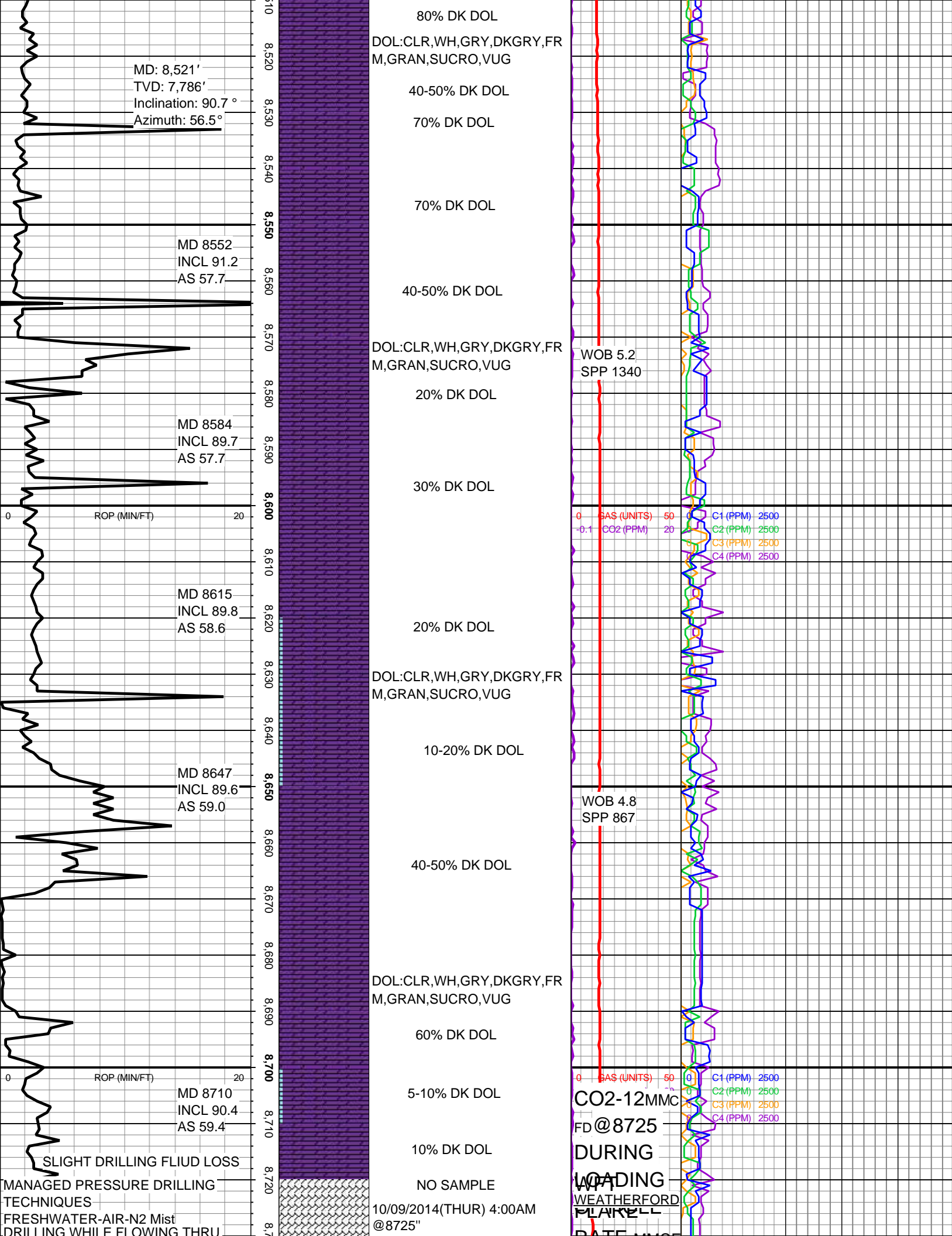
10/08/2014(WEDS) 4:00AM  
@8475'

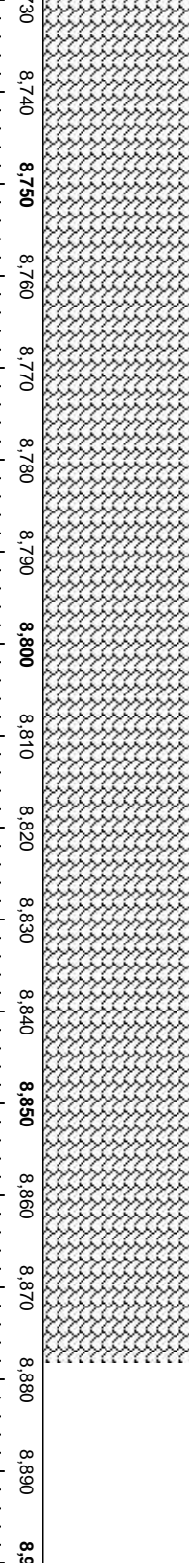
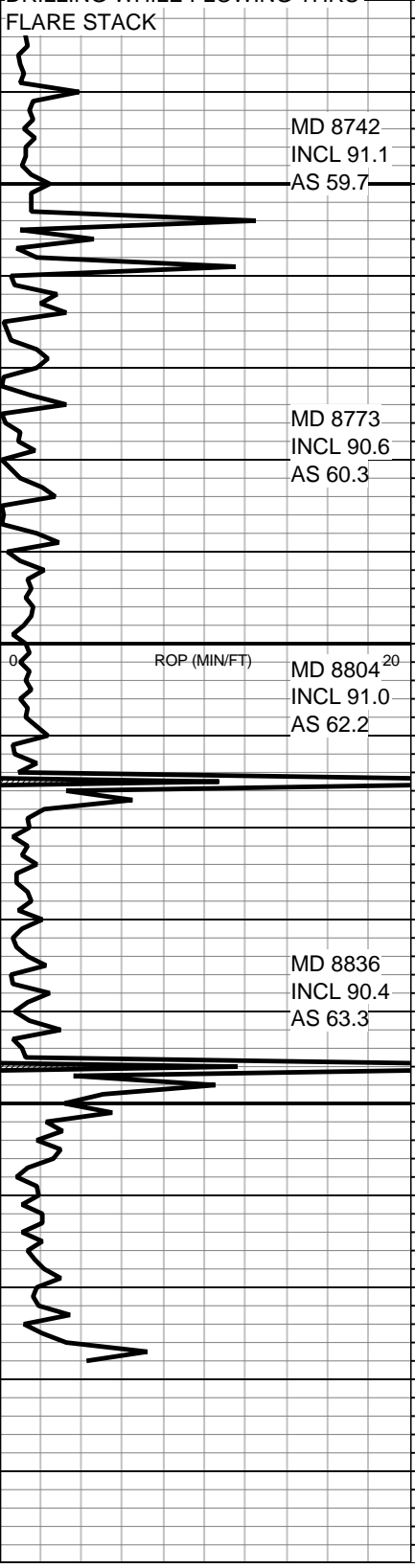
15% DK DOL

40-50% DK DOL









NO SAMPLE DUE TO HIGH PRESSURE RETURNS

NO SAMPLE

NO SAMPLE

NO SAMPLE

10/10/2014(THUR) 4:00AM  
@ 8817'

NO SAMPLE

NO SAMPLE

NO SAMPLE

TD-10/10/2014(FRI)@ 8878'

