



JW WIRELINE COMPANY

GAMMA RAY - C.C.L.
CEMENT BOND - V.D.L.

Company EAST CHEYENNE GAS STORAGE LLC
Well ECGS#6-21 WPD004-2

Field WEST PEETZ
County LOGAN State COLORADO

Location: SHL1440 FSL & 2397 FWL
API #: 05-075-09426-0000

Company EAST CHEYENNE GAS STORAGE LLC
Well ECGS#6-21 WPD004-2

Field WEST PEETZ
County LOGAN State COLORADO

Location: SHL1440 FSL & 2397 FWL
API #: 05-075-09426-0000

Company EAST CHEYENNE GAS STORAGE LLC
Well ECGS#6-21 WPD004-2

Field WEST PEETZ
County LOGAN State COLORADO

Location: SHL1440 FSL & 2397 FWL
API #: 05-075-09426-0000

Company EAST CHEYENNE GAS STORAGE LLC
Well ECGS#6-21 WPD004-2

Field WEST PEETZ
County LOGAN State COLORADO

Location: SHL1440 FSL & 2397 FWL
API #: 05-075-09426-0000

Company EAST CHEYENNE GAS STORAGE LLC
Well ECGS#6-21 WPD004-2

Field WEST PEETZ
County LOGAN State COLORADO

Location: SHL1440 FSL & 2397 FWL
API #: 05-075-09426-0000

Company EAST CHEYENNE GAS STORAGE LLC
Well ECGS#6-21 WPD004-2

Field WEST PEETZ
County LOGAN State COLORADO

Location: SHL1440 FSL & 2397 FWL
API #: 05-075-09426-0000

Company EAST CHEYENNE GAS STORAGE LLC
Well ECGS#6-21 WPD004-2
Field WEST PEETZ
County LOGAN State COLORADO
Location: SHL1440 FSL & 2397 FWL
API #: 05-075-09426-0000

Permanent Datum SEC 6 TWP 1N1 RGE 52N
G.L. Elevation 4557
K.B. 4557
D.F. 4556
G.L. 4559

Run Number N.B.
Date NOV-24-2014
C.M.E.
Cement Loggers 5330
Bottom Logged Material 5331
Total Log Interval 3000

Open Hole Size
Max. Recorded Temp.
Estimated Cement Top

First Well Record
Equipment Number 2337
STERILIZED
Recorded By GARY OLDMAN
Washed By
Run Number From To Size /Weight From To
Casing Record
Surface String
Production String

<<< Fold Here >>>

All interpretations are opinions based on inferences from electrical or other measurements and we cannot and do not guarantee the accuracy or correctness of any interpretation, and we shall not, except in the case of gross or willful negligence on our part, be liable or responsible for any loss, costs, damages, or expenses incurred or sustained by anyone resulting from any interpretation made by any of our officers, agents or employees. These interpretations are also subject to our general terms and conditions set out in our current Price Schedule.

Comments

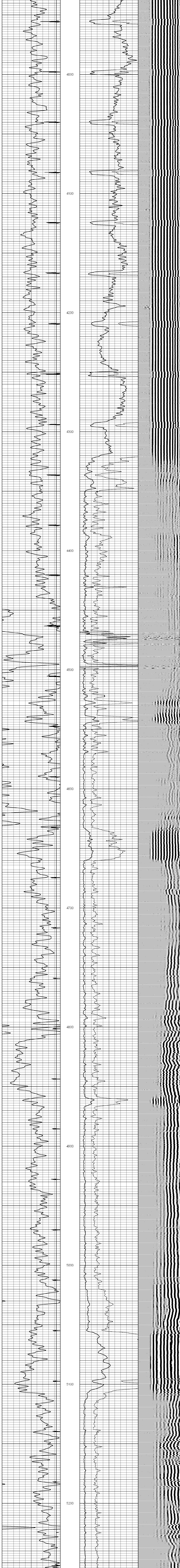
Sensor	Offset (ft)	Schematic	Description	Len (ft)	OD (in)	Wt (lb)
			CENT-probe (probe1)	2.88	2.75	25.00
			RBT-Probe (4.5040904) Probe Radi Bond Tool with Digital Telemetry	8.92	2.75	90.00
			CENT-probe (probe2)	2.88	2.75	25.00
			GR-Probe275dig (pr051112) Probe Digital Gamma CCL	4.75	2.75	57.00

Dataset: ecgs2.db: field/well/run1/merge2
Total Length: 19.42 ft
Total Weight: 197.00 lb
O.D.: 2.75 in

Database File: ecgs2.db
Presentation Pathname: scbl_dr
Dataset Creation: Mon Nov 24 13:07:31 2014
Charted by: Depth in Feet scaled 1:240

14 Collar Locator -1
0 Gamma Ray (GAPI) 180

0 Amplified Amplitude (mV) 30 200 Variable Density 1200
0 3' Amplitude (mV) 100



14 Collar Locator -1
0 Gamma Ray (GAPI) 180

0 Amplified Amplitude (mV) 30 200 Variable Density 1200
0 3' Amplitude (mV) 100