

---

**WILLIAMS PRODUCTION RMT INC EBUSINE**

---

**GM 433-31  
GRAND VALLEY  
Garfield County , Colorado**

**Cement Production Casing**  
**14-Mar-2011**

**Post Job Summary**

## The Road to Excellence Starts with Safety

Sold To #: 300721	Ship To #: 2840445	Quote #:	Sales Order #: 8009947
Customer: WILLIAMS PRODUCTION RMT INC EBUSINE	Customer Rep: Geary, Scott		
Well Name: GM	Well #: 433-31	API/UWI #: 05-045-19442	
Field: GRAND VALLEY	City (SAP): PARACHUTE	County/Parish: Garfield	State: Colorado
Lat: N 39.479 deg. OR N 39 deg. 28 min. 45.469 secs.	Long: W 108.148 deg. OR W -109 deg. 51 min. 8.46 secs.		
Contractor: H&P 278	Rig/Platform Name/Num: H&P 278		
Job Purpose: Cement Production Casing			
Well Type: Development Well	Job Type: Cement Production Casing		
Sales Person: KOHL, KYLE	Srvc Supervisor: ERIC CARTER	MBU ID Emp #: 345598	

## Job Personnel

HES Emp Name	Exp Hrs	Emp #	HES Emp Name	Exp Hrs	Emp #	HES Emp Name	Exp Hrs	Emp #
BATH, KYLE Thomas	7	477632	CARTER, ERIC Earl	7	345598	KEANE, JOHN Donovan	7	486519
SMITH, CHRISTOPHER Scott	7	452619	ZUMWALT, ORVILLE Raymond	7	398157			

## Equipment

HES Unit #	Distance-1 way	HES Unit #	Distance-1 way	HES Unit #	Distance-1 way	HES Unit #	Distance-1 way
10713212	60 mile	10822535	60 mile	10897849	60 mile	10951251	60 mile
11560046	60 mile	11562538	60 mile				

## Job Hours

Date	On Location Hours	Operating Hours	Date	On Location Hours	Operating Hours	Date	On Location Hours	Operating Hours
3/14/11	4	.5	3/15/11	3				

**TOTAL** Total is the sum of each column separately

## Job

Formation Name	Top	Bottom	Called Out	Date	Time	Time Zone
Formation Depth (MD)	2441	6845	On Location	14 - Mar - 2011	20:00	MST
Form Type	BHST	Job Depth TVD	Job Started	14 - Mar - 2011	23:21	MST
Job depth MD	6845. ft	5. ft	Job Completed	14 - Mar - 2011	00:50	MST
Water Depth	Wk Ht Above Floor	5. ft	Departed Loc	14 - Mar - 2011	03:00	MST
Perforation Depth (MD)	From	To				

## Well Data

Description	New / Used	Max pressure psig	Size in	ID in	Weight lbm/ft	Thread	Grade	Top MD ft	Bottom MD ft	Top TVD ft	Bottom TVD ft
OPEN HOLE			4.5	8.75	11.6		I-80	2441.	6845.		
PRODUCTION CASING	Unknown		9.625	8.921	36.		H-40	.	6835.		
SURFACE CASING	Unknown							2441.			

Sales/Rental/3<sup>rd</sup> Party (HES)

Description	Qty	Qty uom	Depth	Supplier
PLUG,CMTG,TOP,4 1/2,HWE,3.65 MIN/4.14 MA	1	EA		

## Tools and Accessories

Type	Size	Qty	Make	Depth	Type	Size	Qty	Make	Depth	Type	Size	Qty	Make
Guide Shoe					Packer					Top Plug	4.5	1	HES
Float Shoe					Bridge Plug					Bottom Plug			
Float Collar					Retainer					SSR plug set			
Insert Float										Plug Container	4.5	1	HES
Stage Tool										Centralizers			

## Miscellaneous Materials

Gelling Agt	Conc	Surfactant	Conc	Acid Type	Qty	Conc	%
Treatment Fld	Conc	Inhibitor	Conc	Sand Type	Size	Qty	

Fluid Data									
Stage/Plug #: 1									
Fluid #	Stage Type	Fluid Name	Qty	Qty uom	Mixing Density lbm/gal	Yield ft <sup>3</sup> /sk	Mix Fluid Gal/sk	Rate bbl/min	Total Mix Fluid Gal/sk
1	Water spacer		10.00	bbl	8.33	.0	.0	5	
2	Super Flush 100	SUPER FLUSH 100 - SBM (12191)	20.00	bbl	11.7	.0	.0	5	
3	Water Spacer		10.00	bbl	8.4	.0	.0	2	
4	Lead Cement	HALCEM (TM) SYSTEM (452986)	285.0	sacks	12.7	1.81	9.63	8	
5	Tail Cement	HALCEM (TM) SYSTEM (452986)	660.0	sacks	13.5	1.41	6.43	8	6.43
6.43 Gal		FRESH WATER							
6	KCL Displacement Fluid		106.00	bbl	8.4	.0	.0	10	
7.7 lbm/bbl		POTASSIUM CHLORIDE 7% (100001585)							
Calculated Values		Pressures		Volumes					
Displacement	105.5	Shut In: Instant		Lost Returns	YES	Cement Slurry	157.6	Pad	
Top Of Cement		5 Min		Cement Returns	0	Actual Displacement	105.5	Treatment	
Frac Gradient		15 Min		Spacers	40	Load and Breakdown		Total Job	405.1
Rates									
Circulating	RIG	Mixing	8	Displacement	10	Avg. Job	9		
Cement Left In Pipe	Amount	29.5 ft	Reason	Shoe Joint					
Frac Ring # 1 @	ID	Frac ring # 2 @	ID	Frac Ring # 3 @	ID	Frac Ring # 4 @	ID		
The Information Stated Herein Is Correct				Customer Representative Signature					

*The Road to Excellence Starts with Safety*

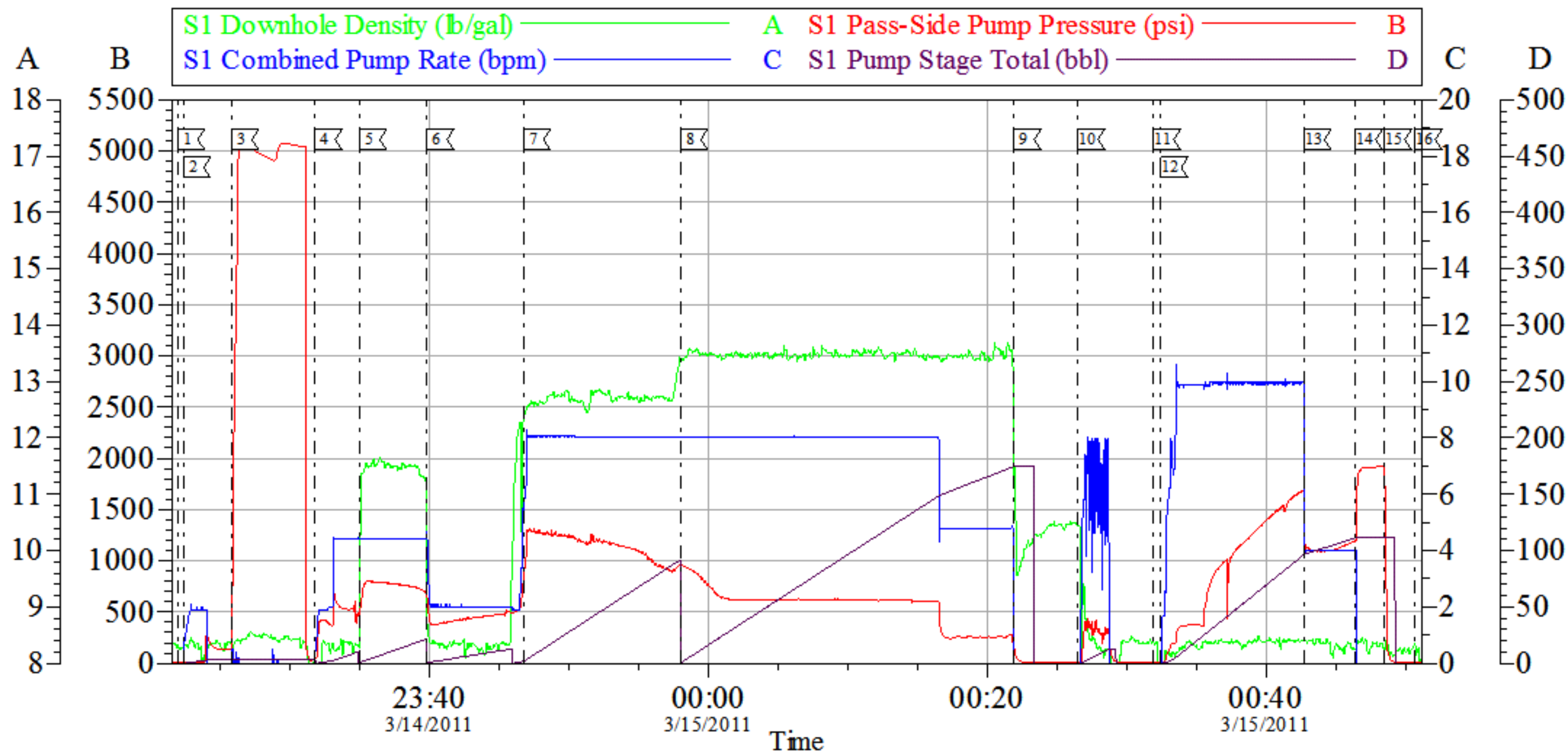
<b>Sold To #:</b> 300721	<b>Ship To #:</b> 2840445	<b>Quote #:</b>	<b>Sales Order #:</b> 8009947
<b>Customer:</b> WILLIAMS PRODUCTION RMT INC EBUSINE		<b>Customer Rep:</b> Geary, Scott	
<b>Well Name:</b> GM	<b>Well #:</b> 433-31	<b>API/UWI #:</b> 05-045-19442	
<b>Field:</b> GRAND VALLEY	<b>City (SAP):</b> PARACHUTE	<b>County/Parish:</b> Garfield	<b>State:</b> Colorado
<b>Legal Description:</b>			
<b>Lat:</b> N 39.479 deg. OR N 39 deg. 28 min. 45.469 secs.		<b>Long:</b> W 108.148 deg. OR W -109 deg. 51 min. 8.46 secs.	
<b>Contractor:</b> H&P 278		<b>Rig/Platform Name/Num:</b> H&P 278	
<b>Job Purpose:</b> Cement Production Casing			<b>Ticket Amount:</b>
<b>Well Type:</b> Development Well		<b>Job Type:</b> Cement Production Casing	
<b>Sales Person:</b> KOHL, KYLE		<b>Srvc Supervisor:</b> ERIC CARTER	<b>MBU ID Emp #:</b> 345598

Activity Description	Date/Time	Cht #	Rate bbl/min	Volume bbl		Pressure psig		Comments
				Stage	Total	Tubing	Casing	
Call Out	03/14/2011 16:00							
Depart Yard Safety Meeting	03/14/2011 17:55							ATTENDED BY ALL HES CREW
Crew Leave Yard	03/14/2011 18:00							
Arrive At Loc	03/14/2011 20:00							RIG RUNNING CASING
Assessment Of Location Safety Meeting	03/14/2011 20:10							ATTENDED BY ALL HES CREW
Other	03/14/2011 21:30							SPOT EQUIPMENT
Pre-Rig Up Safety Meeting	03/14/2011 21:50							ATTENDED BY ALL HES CREW
Rig-Up Equipment	03/14/2011 22:00							
Pre-Job Safety Meeting	03/14/2011 23:00							ATTENDED BY ALL HES CREW, RIG CREW AND COMPANY REP
Start Job	03/14/2011 23:21							TP 6835', TD 6845', SJ 29.5', FC 6805.5', MW 11.1 PPG, CASING 4.5", 11.6#, N-80, HOLE 8.75", SURFACE CASING 9.625", 36# SET AT 2441'
Other	03/14/2011 23:22		2	2	2		250.0	FILL LINES
Test Lines	03/14/2011 23:25							PRESSURED UP TO 5072 PSI, PRESSURE HELD
Pump Spacer 1	03/14/2011 23:31		5	10	12		560.0	FRESH WATER
Pump Spacer 2	03/14/2011 23:34		5	20	32		780.0	SUPER FLUSH

Activity Description	Date/Time	Cht #	Rate bbl/min	Volume bbl		Pressure psig		Comments
				Stage	Total	Tubing	Casing	
Pump Spacer 1	03/14/2011 23:39		2	10	42		500.0	FRESH WATER
Pump Lead Cement	03/14/2011 23:46		8	91.9	133.9		1305.0	285 SKS MIXED AT 12.7 PPG, 1.81 YIELD, 9.63 GL/SK
Pump Tail Cement	03/14/2011 23:57		8	165.7	299.6		909.0	660 SKS MIXED AT 13.5 PPG, 1.41 YIELD, 6.43 GL/SK
Shutdown	03/15/2011 00:21							
Clean Lines	03/15/2011 00:26							CLEANED LINES TO PIT
Drop Top Plug	03/15/2011 00:31							COMPANY REP VERIFIED THAT PLUG LAUNCHED
Pump Displacement	03/15/2011 00:32		10	95.5	395.1		1640.0	KCL DISPLACEMENT W/BE-6, MMCR
Slow Rate	03/15/2011 00:42		4	10	405.1		1200.0	
Bump Plug	03/15/2011 00:46						1930.0	PLUG LANDED
Check Floats	03/15/2011 00:48							FLOATS HELD
End Job	03/15/2011 00:50							GOOD CIRCULATION AT BEGINING OF JOB, RETURNS SLOWED TO A TRICKLE DURING LEAD, RETURNS GAINED AT 80 BBLS OF DISPLACEMENT TO 5 BPM, 0 BBLS CEMENT TO SURFACE, RIG WAS UNABLE TO MOVE PIPE UNTIL 30 PUMPED OF DISPLACEMENT.
Post-Job Safety Meeting (Pre Rig-Down)	03/15/2011 01:00							ATTENDED BY ALL HES CREW
Rig-Down Equipment	03/15/2011 01:10							
Depart Location Safety Meeting	03/15/2011 02:50							ATTENDED BY ALL HES CREW
Crew Leave Location	03/15/2011 03:00							THANK YOU FOR USING HALLIBURTON CEMENT, ERIC CARTER AND CREW.

# WILLIAMS

## 4.5" PRODUCTION/GM 433-31



### Local Event Log

1 STARTJOB	3/14/2011 23:21:54	2 FILL LINES	3/14/2011 23:22:19	3 TESTLINES	3/14/2011 23:25:47
4 PUMP H2O SPACER	3/14/2011 23:31:45	5 PUMP SUPER FLUSH	3/14/2011 23:34:57	6 PUMP H2O SPACER	3/14/2011 23:39:46
7 PUMP LEAD CEMENT	3/14/2011 23:46:43	8 PUMP TAIL CEMENT	3/14/2011 23:57:59	9 SHUTDOWN	3/15/2011 00:21:55
10 CLEAN LINES	3/15/2011 00:26:29	11 DROP TOP PLUG	3/15/2011 00:31:56	12 PUMP DISPLACEMENT	3/15/2011 00:32:27
13 SLOW RATE	3/15/2011 00:42:43	14 BUMP PLUG	3/15/2011 00:46:24	15 CHECK FLOATS	3/15/2011 00:48:31
16 END JOB	3/15/2011 00:50:41				

Customer: WILLIAMS PRODUCTION RMT INC EBUSINE  
 Well Description: GM 433-31  
 Company Rep: RICK OAKS

Job Date: 14-Mar-2011  
 Job Type: 05-045-19442  
 Cement Supervisor: ERIC CARTER

Sales Order #: 8009947  
 ADC Used: YES  
 Elite #/Operator: 5/CHRIS SMITH

OptiCem v6.4.0  
 15-Mar-11 01:10