

Weber L 4-5

Existing Features		
KB	12	

Surface csg shoe at	412
---------------------	-----

Bottom of Foxhills (FHM)	906
--------------------------	-----

Sussex	Top	4237
Sussex	Base	4493
No sussex production w/in 1 mile radius		

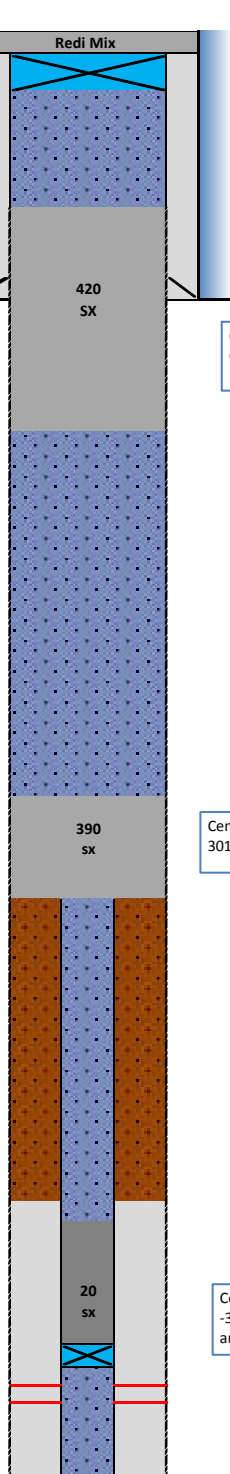
Shannon	Bottom	Absent
No shannon production w/in 1 mile radius		

TOC Annulus existing (CBL)	6475
----------------------------	------

Niobrara Geologic Top	7006
-----------------------	------

Geologic Top		
Cod	Perf Top	7300
	Perf Bottom	7316

PBMD	7423
2-7/8" 6.5# CSG	7426



Proposed Additions for P&A

80	CIBP (8-5/8")
----	---------------

200	TOC
-----	-----

Cement Blend: Type III w/ .25 pps cello flake and CaCl₂, mixed at 14.8 ppg and 1.33 cuft/sk.

1100	Bottom of Cement
------	------------------

4030	Top of cement (tag)
------	---------------------

Cement Blend: "G" w/ 0.4% CD-32, 0.4% ASA - 301, .25 pps cello flake mixed at 15.8 ppg and 1.15

4540	Bottom of cement / Csg Stub
------	-----------------------------

6600	Top of cement
------	---------------

Cement Blend: "G" w/ 20% silica flour, 0.4% CD-32, 0.4% ASA -301 and R-3 to achieve 2:30 pump time mixed at 15.8 ppg and 1.38 cuft/sk

7226	2-7/8" CIBP
------	-------------

API# 05-123-15135					
Weber L 4-5					
Well:	Specs.	Depth	Capacity (bbl/ft)	Capacity ft ³ /ft	
Surface Casing	8 5/8" 24#	604	0.063686554	0.3576	
Production Casing	2-7/8" 6.5#	7501	0.00579	0.0325	
Tubing Size					
Bit Size	7 7/8		0.0602	0.3382	
Hole Size	9.5		0.0877	0.4922	
Hole Size	11.5		0.1285	0.7213	
Hole Size	15		0.2186	1.2272	

Cement Calculations				
Section	Volume cu-ft	Cement Sacks	Excess	Top Plug
S/C hole	75.81	57.00		~9.5" hole Caliper, offset
Open Hole	474.12	356.48	40%	
Total Top Plug	549.93	413.48	420	

558.6 cu-ft

				SX/ SH Plug
OpenHole	441.44	383.86	20%	11.5"
Total	441.44	383.86	390	Caliper

448.5 cu-ft

Cement Yield	1.33	1.15	1.71	1.38
	Top Plug	SX/SH	NB/Cd Squeeze	NB/Cd in pipe

Legend	
	Existing cement with CBL
	assumed cement w/ no CBL
	cast iron cement retainer
	cast iron bridge plug
	mud
	2% KCL Water

	Vol	Sacks		
NB cmt	20.35	14.74		NB/CD Plug
Total			20	