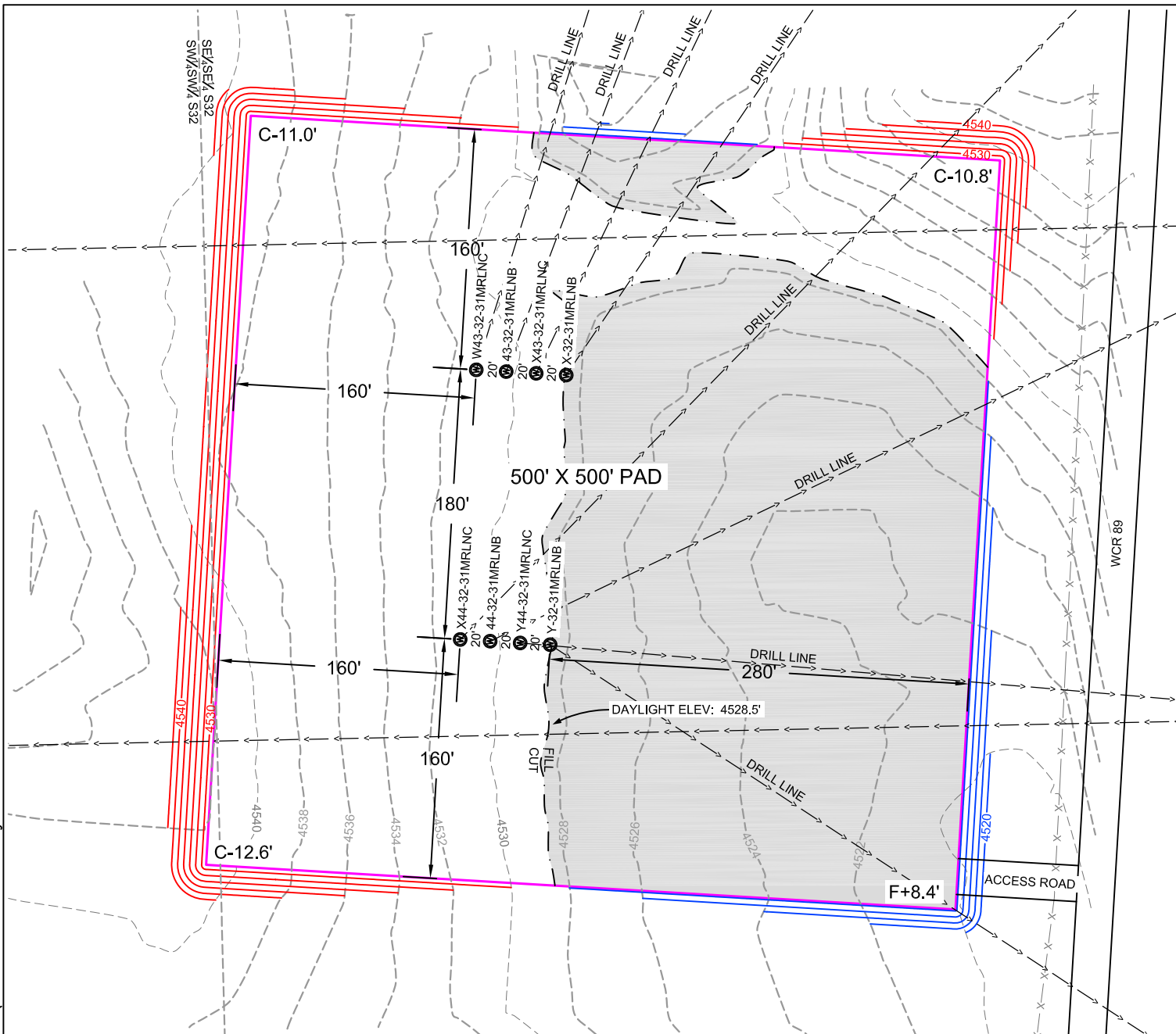


\\TSS200DE40\ShoreFES\Projects\1319-01\_BONANZA\5N-61W\DWG\PRONGHORN 44-33 LAYOUT.dwg SAVED DATE 2014-12-02 17:39



#### DESIGN INFORMATION & EARTH VOLUMES

DESIGN GRADE OF PAD = 4528.5'  
CUT SLOPES = 2.0:1  
FILL SLOPES = 2.0:1  
TOTAL CUT FOR WELL PAD = 28,421 C.Y.  
TOTAL FILL FOR WELL PAD = 17,799 C.Y.  
TOPSOIL @ 6" DEPTH (ESTIMATED) = 4,600 C.Y.  
SHRINKAGE (10%) = 2,382 C.Y.  
EXCESS MATERIAL = 3,640 C.Y.  
TOTAL DISTURBANCE OF PAD = 6.3 AC. +/-

#### WELL TABULATION (NORTH)

PRONGHORN W43-32-31MRLNC  
SURFACE (573'FSL;1127'FEL)  
PRONGHORN 43-32-31MRLNB  
SURFACE (571'FSL;1107'FEL)  
PRONGHORN X43-32-31MRLNC  
SURFACE (570'FSL;1087'FEL)  
PRONGHORN X-32-31MRLNB  
SURFACE (568'FSL;1067'FEL)

#### WELL TABULATION (SOUTH)

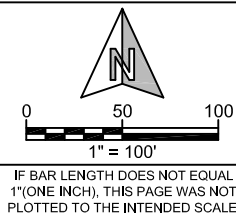
PRONGHORN X44-32-31MRLNC  
SURFACE (393'FSL;1143'FEL)  
PRONGHORN 44-32-31MRLNB  
SURFACE (392'FSL;1123'FEL)  
PRONGHORN Y44-32-31MRLNC  
SURFACE (390'FSL;1103'FEL)  
PRONGHORN Y-32-31MRLNB  
SURFACE (389'FSL;1083'FEL)

#### NOTES:

- PDOP value equals 1.4. 10-22-14
- GPS operator: John Stoddard.
- Vegetation: Range Grass
- Surface Use: Range
- Contour Elevation = 2'
- Contractor shall place topsoil and spoils piles at owners discretion.
- Facilities placement recommended for cut areas.
- Nearest Cultural Distances (Facilities)
  - Buildings: 5280' +/-
  - Building Unit: 5280' +/-
  - High Occupancy Building Unit: 5280' +/-
  - Designated Outside Activity Area: 5280' +/-
  - Public Road: 79' +/-
  - Above Ground Utility: 5280' +/-
  - Railroad: 5280' +/-
  - Property Line: 207' +/-



Drawn By: MAM  
Checked By: DAF  
Date: 11/17/14  
Revision: 1  
Date: 12/02/14  
Explanation:  
WELL LAYOUT



#### PROPOSED LAYOUT

STATE PRONGHORN 44-32 PAD  
SE 1/4, SECTION 32,  
T.5N., R.61W., 6th PM  
WELD COUNTY, COLORADO



410 17th Street  
Denver, CO 80202  
(720) 440-6100

SHEET

1

OF

1